

ALEX. AGASSIZ.

Library of the Museum
OF
COMPARATIVE ZOÖLOGY,

AT HARVARD COLLEGE, CAMBRIDGE, MASS.

Founded by private subscription, in 1861.

Deposited by ALEX. AGASSIZ.

No. 7527

April 17 - December 18, 1884.

1
New Series, No. XCIII.

Price 10s.

JANUARY, 1884.

THE
QUARTERLY JOURNAL
OF
MICROSCOPICAL SCIENCE.

EDITED BY

E. RAY LANKESTER, M.A., F.R.S., F.L.S.,
*Fellow of Exeter College, Oxford, and Jodrell Professor of Zoology in University College,
London;*

WITH THE CO-OPERATION OF

W. T. THISELTON DYER, M.A., C.M.G., F.R.S., F.L.S.,
Assistant Director of the Royal Gardens, Kew,

E. KLEIN, M.D., F.R.S.,
*Joint-Lecturer on General Anatomy and Physiology in the Medical School of St. Bartholomew's Hospital,
London.*

H. N. MOSELEY, M.A., F.R.S., F.L.S.,
Linacre Professor of Human and Comparative Anatomy in the University of Oxford,

AND

ADAM SEDGWICK, M.A.,
Fellow and Assistant-Lecturer of Trinity College, Cambridge.

WITH LITHOGRAPHIC PLATES AND ENGRAVINGS ON WOOD.



LONDON:

J. & A. CHURCHILL, 11, NEW BURLINGTON STREET.

MDCCCLXXXIV.

CONTENTS OF No. XCIII.—New Series.

MEMOIRS:

	PAGE
Notes on Echinoderm Morphology, No. VII. On the Apical System of the Ophiurids. By P. HERBERT CARPENTER, M.A., Assistant Master at Eton College. (With Plate I)	1
On the Homologies of the Primary Larval Plates in the Test of Brachiata Echinoderms. By W. PERCY SLADEN, F.L.S., F.G.S. (With Plate I.)	24
On the Origin of Metameric Segmentation and some other Morphological Questions. By ADAM SEDGWICK, M.A., Fellow and Assistant Lecturer of Trinity College, Cambridge. (With Plates II and III.)	43
On Certain Abnormalities in the Common Frog (<i>Rana temporaria</i>). 1. The Occurrence of an Ovotestis. 2. Abnormalities of the Vertebral Column. By ALFRED GIBBS BOURNE, B.Sc. Lond., University Scholar in Zoology, and Assistant to the Jodrell Professor, University College, London. (With Plate IV.)	83
Researches on the Intracellular Digestion of Invertebrates. By Dr. Elias Metschnikoff	89
The Ancestral History of the Inflammatory Process. By Dr. Elias Metschnikoff	112
The Structures connected with the Ovarian Ovum of Marsupialia and Monotremata. By EDWARD B. POULTON, M.A., of Jesus and Keble Colleges, Oxford. (With Plate V.)	118
On the Skeleto-trophic Tissues and Coxal Glands of <i>Limulus</i> , <i>Scorpio</i> , and <i>Mygale</i> . By E. RAY LANKESTER, M.A., F.R.S., Jodrell Professor of Zoology in University College, London. (With Plates VI, VII, VIII, IX, X, XI)	129
An Improvement in the Method of Using the Freezing Microtome. By J. SOLLAS, M.A., Professor of Geology in Trinity College, Dublin	163

2917
130

May 17. 1884

New Series, No. XCIV.

Price 10s.

APRIL, 1884.

THE
QUARTERLY JOURNAL
OF
MICROSCOPICAL SCIENCE.

EDITED BY

E. RAY LANKESTER, M.A., F.R.S., F.L.S.,

*Fellow of Exeter College, Oxford, and Jodrell Professor of Zoology in University College,
London;*

WITH THE CO-OPERATION OF

W. T. THISELTON DYER, M.A., C.M.G., F.R.S., F.L.S.,

Assistant Director of the Royal Gardens, Kew,

E. KLEIN, M.D., F.R.S.,

*Joint-Lecturer on General Anatomy and Physiology in the Medical School of St. Bartholomew's Hospital,
London.*

H. N. MOSELEY, M.A., F.R.S., F.L.S.,

Linacre Professor of Human and Comparative Anatomy in the University of Oxford,

AND

ADAM SEDGWICK, M.A.,

Fellow and Assistant-Lecturer of Trinity College, Cambridge.

WITH LITHOGRAPHIC PLATES AND ENGRAVINGS ON WOOD.



LONDON:

J. & A. CHURCHILL, 11, NEW BURLINGTON STREET.

MDCCLXXXIV.

CONTENTS OF No. XCIV.—New Series.

MEMOIRS:

	PAGE
On the Chlorophyll Corpuscles of some Infusoria. By JESSIE A SALLITT. (With Plates XIII and XIV)	165
On the Head Kidney of Bdellostoma, with a Suggestion as to the Origin of the Suprarenal Bodies. By W. F. R. WELDON, B.A., Scholar of St. John's College, Cambridge, Demonstrator of Comparative Anatomy in the University. (With Plate XV)	171
On some Points in the Minute Structure of the Pancreas. By HENEAGE GIBBES, M.D., Lecturer on Physiology and on Normal and Morbid Histology in the Medical School of the Westminster Hospital. (With Plate XVI, figs. 1, 2 and 3)	183
On some Structures found in the Connective Tissue between the Renal Artery and Vein in the Human Subject. By HENEAGE GIBBES, M.D., Lecturer on Physiology and on Normal and Morbid Histology in the Medical School of the Westminster Hospital. (With Plate XVI, figs. 4 and 5)	186
Histological Notes. By HENEAGE GIBBES, M.D., Lecturer on Physiology and on Normal and Morbid Histology in the Medical School of the Westminster Hospital	191
On the Laticiferous Tissue of <i>Manihot glaziovii</i> (the Cearà Rubber). By D. H. SCOTT, M.A., Ph.D., Assistant to the Professor of Botany in University College, London. (From the Jodrell Laboratory, Kew.) (With Plate XVII)	194
Note on the Laticiferous Tissue of <i>Hevea spruceana</i> . By D. H. SCOTT, M.A., Ph.D. (From the Jodrell Laboratory, Kew.)	205
The Early Stages in the Development of <i>Balanoglossus</i> (sp. incert.). By WILLIAM BATESON, B.A., Scholar of St. John's College, Cambridge. (With Plates XVIII, XIX, XX and XXI)	208
On Recent Researches into the Origin and Morphology of Chlorophyll Corpuscles and Allied Bodies. By F. O. BOWER, M.A., Lecturer on Botany at the Normal School of Science, South Kensington. (With Plate XXII)	237
On the Pharynx of an Unknown Holothurian of the Family Dendrochirotae, in which the Calcareous Skeleton is remarkably developed. By H. N. MOSELEY, M.A., F.R.S., Linacre Professor of Human and Comparative Anatomy, Oxford. (With Plate XXIII)	255
On the Sexuality of the Fungi. By H. MARSHALL WARD, M.A., Fellow of Christ's College, Cambridge; Assistant-Lecturer in Botany at the Owens College, Victoria University, Manchester	262
On Procalistes, a Young Cephalopod with Pedunculate Eyes, taken by the "Challenger" Expedition. By E. RAY LANKESTER, M.A., F.R.S., Jodrell Professor of Zoology in University College, London	311
Notes on Echinoderm Morphology, No. VIII. On some Points in the Anatomy of Larval Comatulæ. By P. HERBERT CARPENTER, D.Sc., Assistant Master at Eton College	319
Some Account of <i>Polystigma rubrum</i> , Pers., based upon the Recent Investigations of Dr. A. B. Frank, and C. Fisch. By W. B. GROVE, B.A., Honorary Librarian of the Birmingham Natural History and Microscopical Society	323

Aug. 27, 1884

3

New Series, No. XCV.

Price 10s.

JULY, 1884.

THE
QUARTERLY JOURNAL
OF
MICROSCOPICAL SCIENCE.

EDITED BY

E. RAY LANKESTER, M.A., F.R.S., F.L.S.,
*Fellow of Exeter College, Oxford, and Jodrell Professor of Zoology in University College,
London;*

WITH THE CO-OPERATION OF

W. T. THISELTON DYER, M.A., C.M.G., F.R.S., F.L.S.,
Assistant Director of the Royal Gardens, Kew,

E. KLEIN, M.D., F.R.S.,
*Joint-Lecturer on General Anatomy and Physiology in the Medical School of St. Bartholomew's Hospital,
London.*

H. N. MOSELEY, M.A., F.R.S., F.L.S.,
Linacre Professor of Human and Comparative Anatomy in the University of Oxford,

AND

ADAM SEDGWICK, M.A.,
Fellow and Assistant-Lecturer of Trinity College, Cambridge.

WITH LITHOGRAPHIC PLATES AND ENGRAVINGS ON WOOD.



LONDON:

J. & A. CHURCHILL, 11, NEW BURLINGTON STREET.

MDCCCLXXXIV.

CONTENTS OF No. XCV.—New Series.

MEMOIRS:

	PAGE
An Attempt to re-classify the Rotifers. By C. T. HUDSON, LL.D.	335
Further Observations on Flagellated Organisms in the Blood of Animals. By Surgeon-Major TIMOTHY RICHARDS LEWIS, M.B., Assistant Professor of Pathology, Army Medical School, Netley	357
Physiology of Protoplasmic Movement. By Prof. Dr. TH. W. ENGELMANN, in Utrecht	370
Contributions to the Anatomy of the Hirudinea. By ALFRED GIBBS BOURNE, B.Sc. Lond., Assistant Professor of Zoology and Comparative Anatomy, University College, London. (With Plates XXIV—XXXIV)	419
On the Nervous System of <i>Antedon rosaceus</i> . By A. MILNES MARSHALL, M.D., D.Sc., M.A., Fellow of St. John's College, Cambridge; Beyer Professor of Zoology in Owens College. (With Plate XXXV)	507

4
New Series, No. XCVI.

Dec. 18. 1884.

Price 10s.

OCTOBER, 1884.

THE
QUARTERLY JOURNAL
OF
MICROSCOPICAL SCIENCE.

EDITED BY

E. RAY LANKESTER, M.A., F.R.S., F.L.S.,
*Fellow of Exeter College, Oxford, and Jodrell Professor of Zoology in University College,
London;*

WITH THE CO-OPERATION OF

W. T. THISELTON DYER, M.A., C.M.G., F.R.S., F.L.S.,
Assistant Director of the Royal Gardens, Kew,

E. KLEIN, M.D., F.R.S.,
*Joint-Lecturer on General Anatomy and Physiology in the Medical School of St. Bartholomew's Hospital,
London.*

H. N. MOSELEY, M.A., LL.D., F.R.S., F.L.S.,
Linacre Professor of Human and Comparative Anatomy in the University of Oxford,

AND

ADAM SEDGWICK, M.A.,
Fellow and Assistant-Lecturer of Trinity College, Cambridge.

WITH LITHOGRAPHIC PLATES AND ENGRAVINGS ON WOOD.



LONDON:

J. & A. CHURCHILL, 11, NEW BURLINGTON STREET.

MDCCCLXXXIV.

CONTENTS OF No. XCVI.—New Series.

MEMOIRS:

	PAGE
The Development of Phryganids, with a Preliminary Note on the Development of <i>Blatta Germanica</i> . By WILLIAM PATTEN, of Boston, U.S.A. (With Plates XXXVIA, XXXVIB and XXXVIC).	549
On the Development of <i>Halisarca lobularis</i> (O. Schmidt). By W. J. SOLLAS, M.A., D.Sc., Late Fellow of St. John's College, Cambridge, Professor of Geology in the University of Dublin. (With Plate XXXVII)	603
A Contribution to the Knowledge of Rhabdopleura. By E. RAY LANKESTER, M.A., F.R.S., Jodrell Professor of Zoology in University College, London. (With Plates XXXVII bis, XXXVIII, XXXIX, XL, XLI)	622
Caldwell's Automatic Microtome. (With Plate XLII)	648
On the Arrangement of the Embryonic Membranes in Marsupial Animals. By H. CALDWELL, B.A., Fellow of Caius College, and Balfour Student of the University of Cambridge. (With Plate XLIII)	655
On the Fate of the Blastopore and the Presence of a Primitive Streak in the Newt (<i>Triton cristatus</i>). By ALICE JOHNSON, Demonstrator of Biology, Newnham College, Cambridge. (With Plate XLIV.)	659
On the Eyes of Some Invertebrata. By JUSTUS CARRIÈRE, of Strassburg. (With Plate XLV)	673
Protoplasmic Movement and Quinine. By Prof. Dr. E. BINZ, of Bonn	682

TITLE, CONTENTS AND INDEX.

Fig. 1.

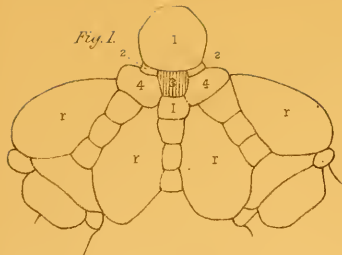


Fig. 2.

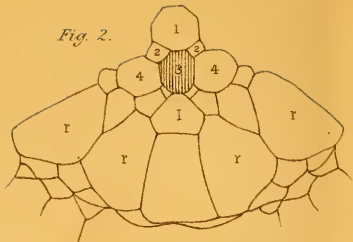


Fig. 3.

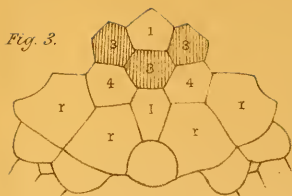


Fig. 4.

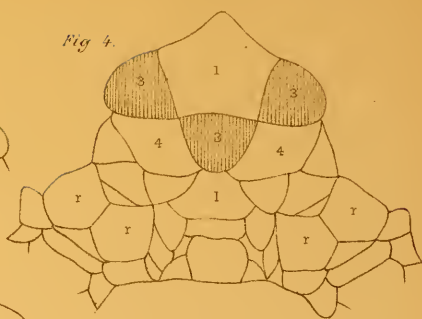


Fig. 5.

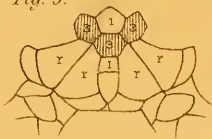


Fig. 6.

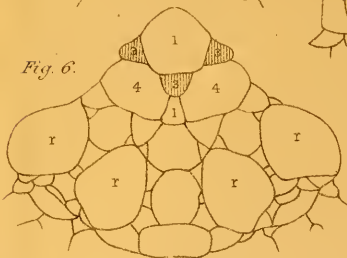


Fig. 8.

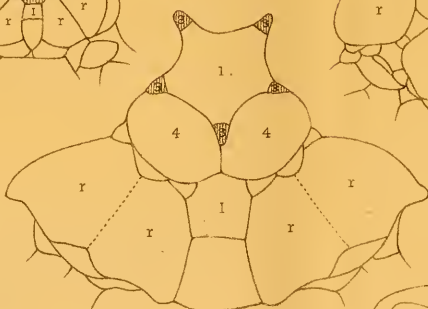


Fig. 7.

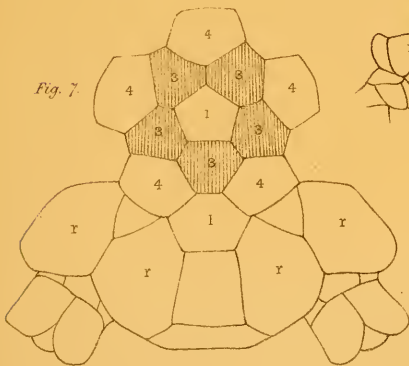


Fig. 9.

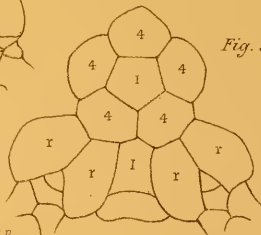


Fig. 13.

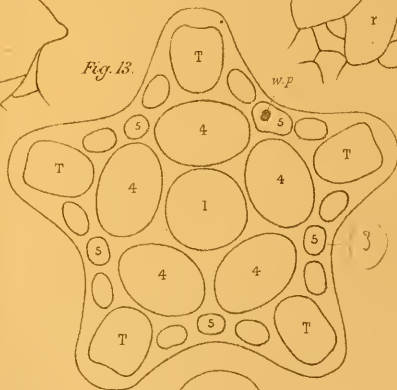


Fig. 16.

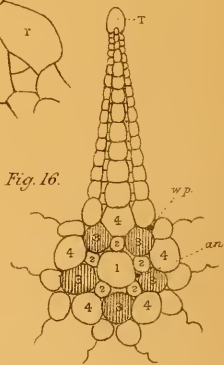


Fig. 11.

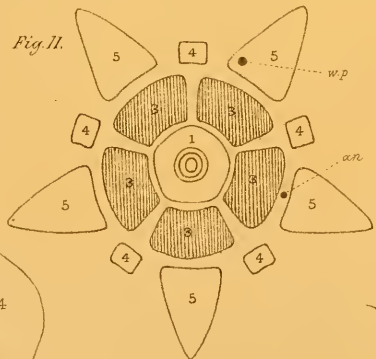


Fig. 12.

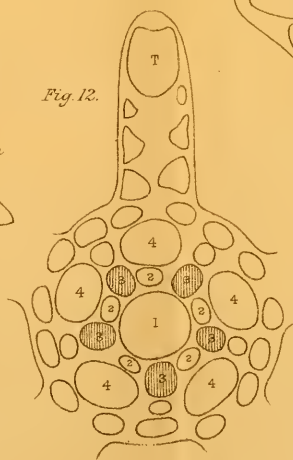


Fig. 10.

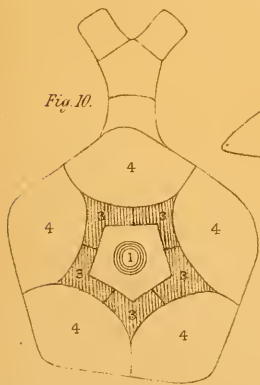


Fig. 14.

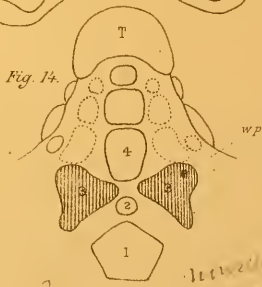


Fig. 15.

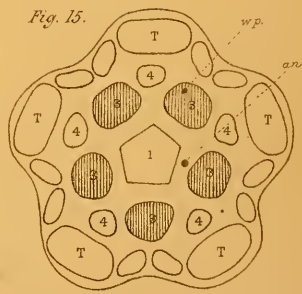






Fig. 1.

a



Fig. 2.

a



Fig. 3.

a

Fig. 4.

a



Fig. 5.

a



Fig. 6.

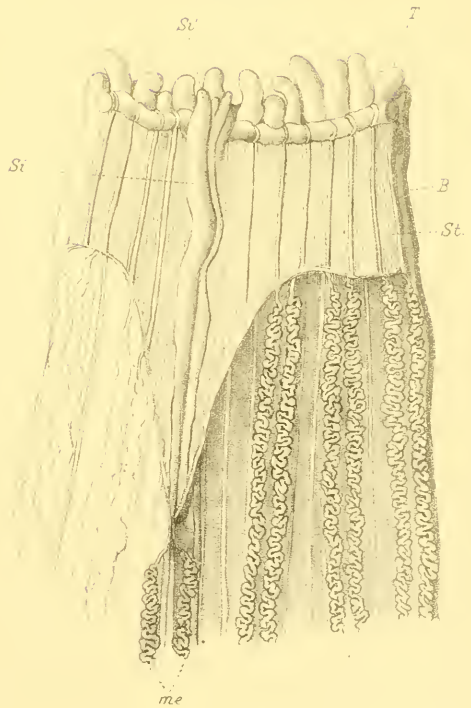


Fig. 1.



Fig. 2.

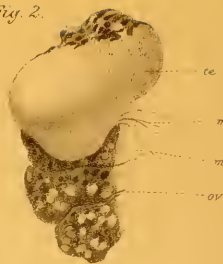


Fig. 3.



Fig. 4.

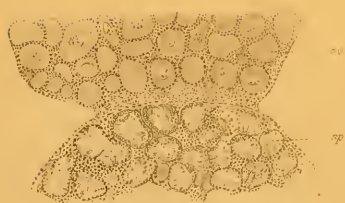


Fig. 6. A.

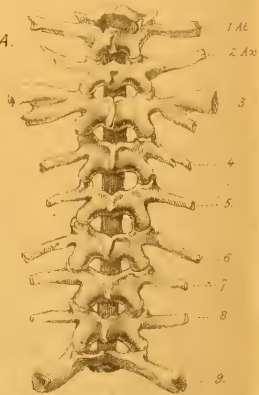


Fig. 5.

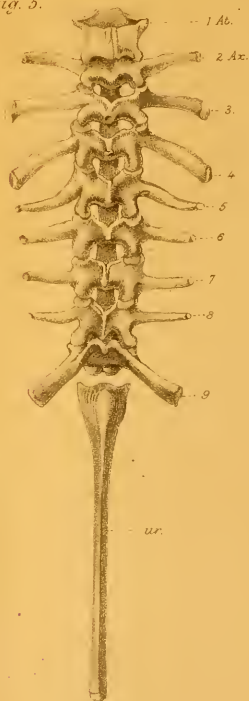


Fig. 9. B.



Fig. 7.
A. Al.



Fig. 10.
B. 10.



Fig. 8.
A. 3.



Fig. 11.
B. 10.



Fig. 12.
B. ur.



Fig 1 x 9



Fig 2 x 50



Fig 4 x 50

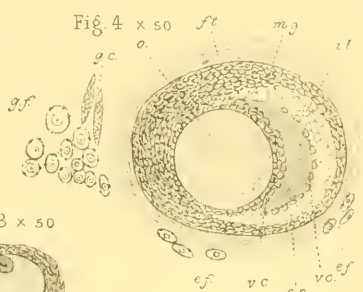


Fig 3 x 50

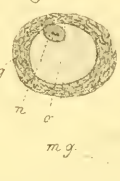


Fig 5 x 50

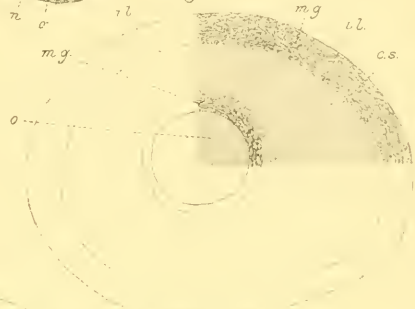


Fig. 6 x 50

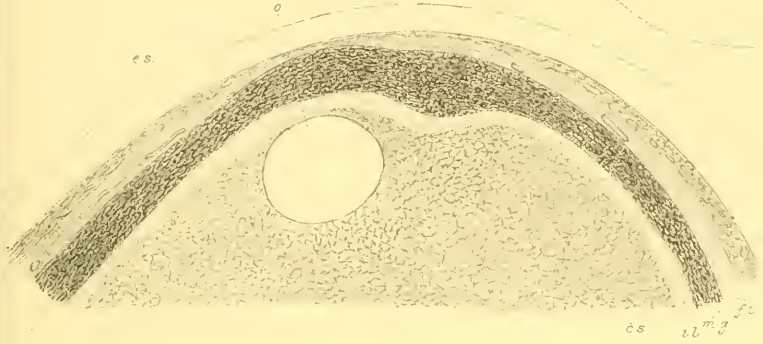


Fig 9 x 188



Fig 10 x 188

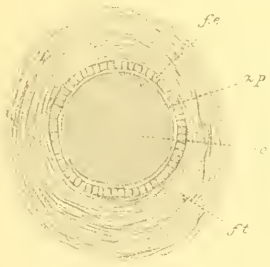


Fig 7 x 188

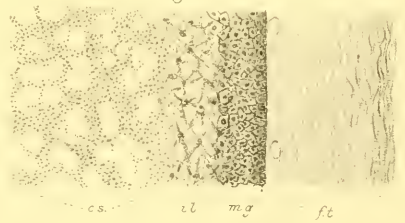


Fig. 8 x 9

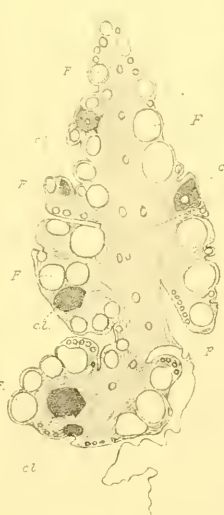


Fig 12 x 405

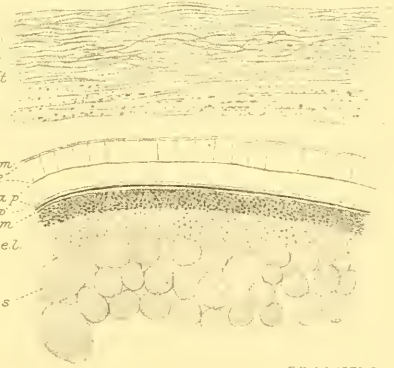
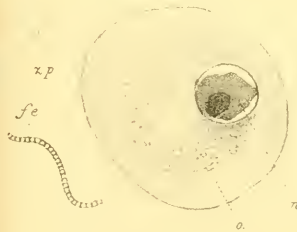


Fig. 11 x 188



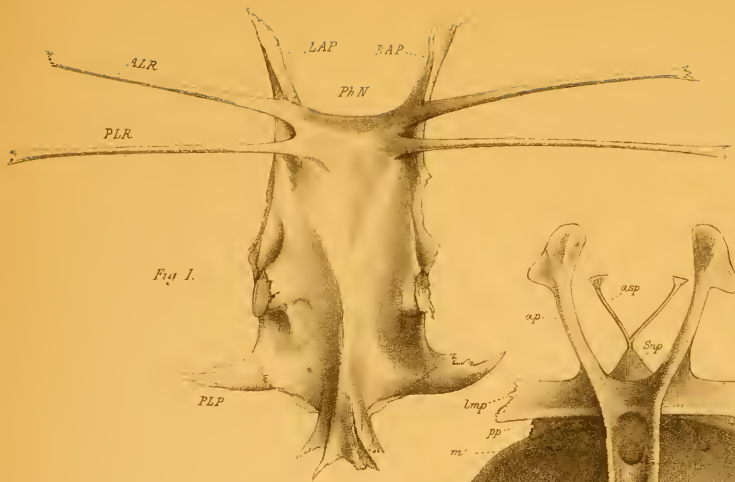


Fig. 1.

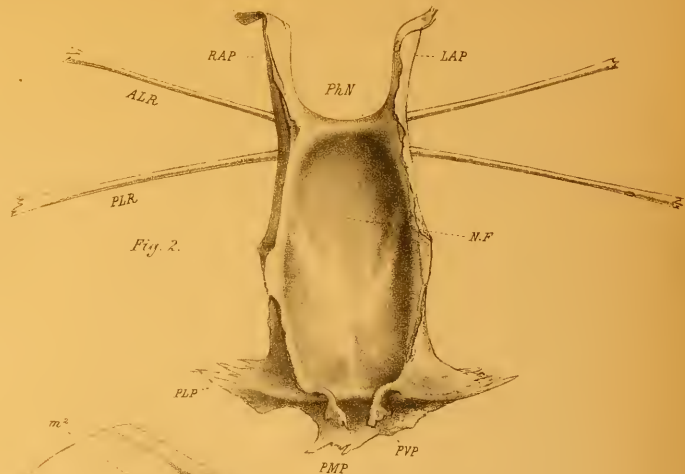


Fig. 2.

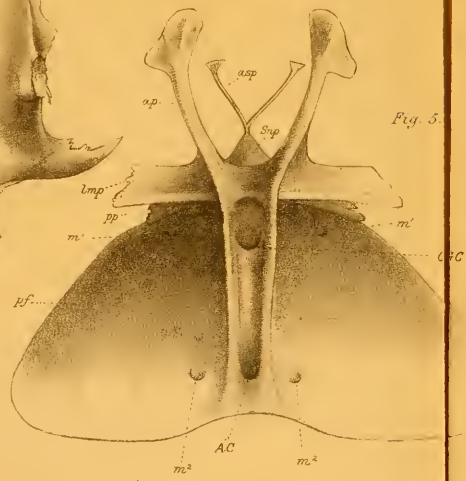


Fig. 5.

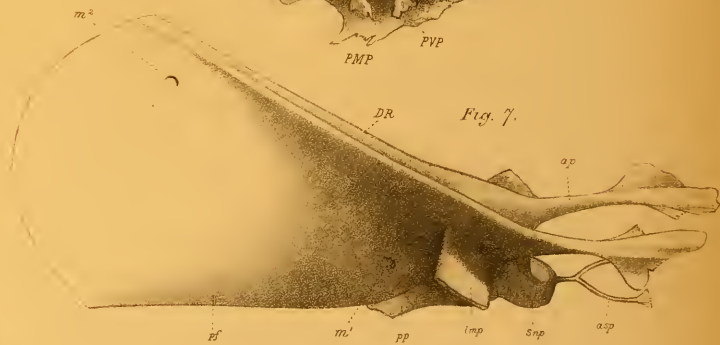


Fig. 7.

Fig. 3.

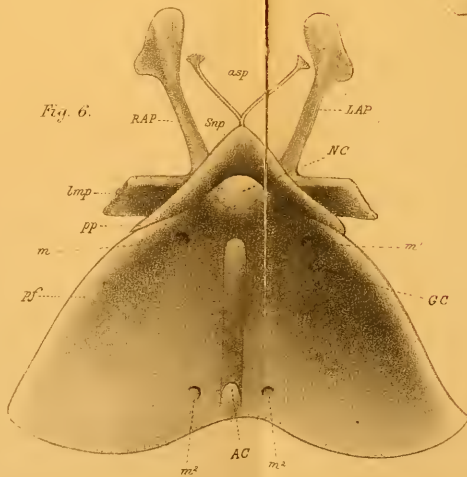


Fig. 6.

Fig. 4.



Fig. 1.



Fig. 2.

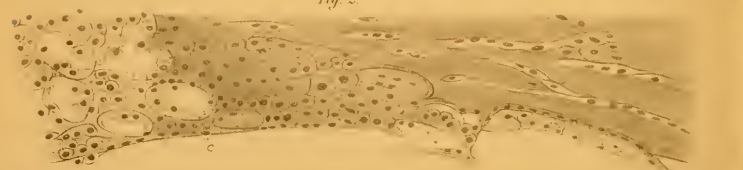


Fig. 3.

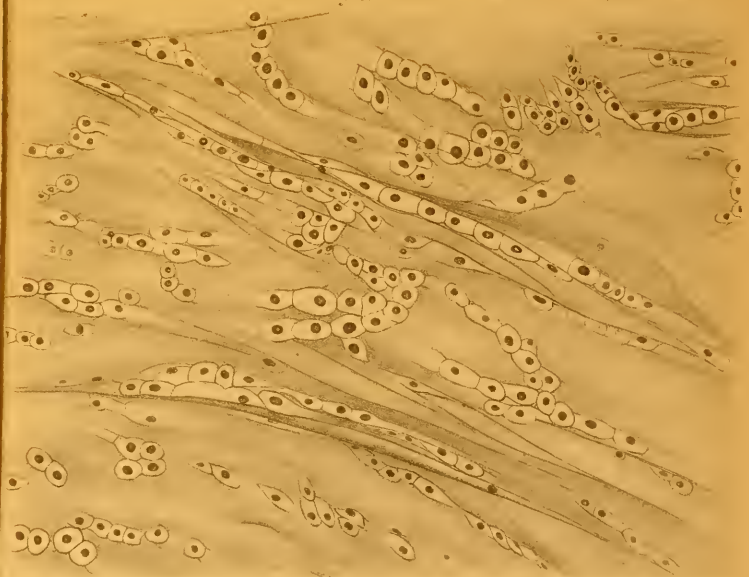
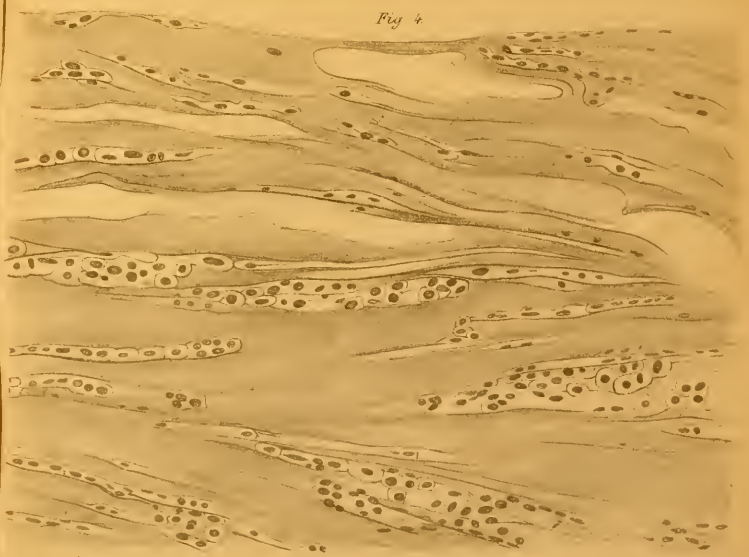
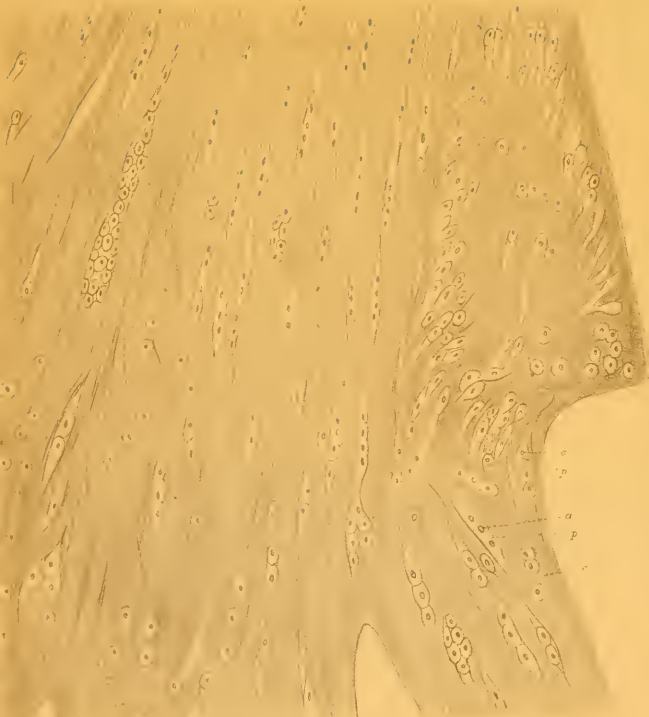


Fig. 4.



500^u inch

Fig. 1.



500th inch
Scale of Fig. 1

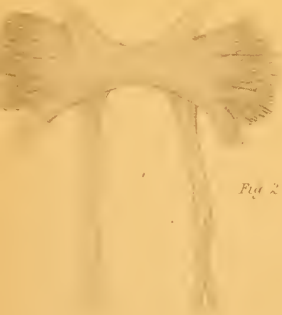


Fig. 2.



Fig. 3.

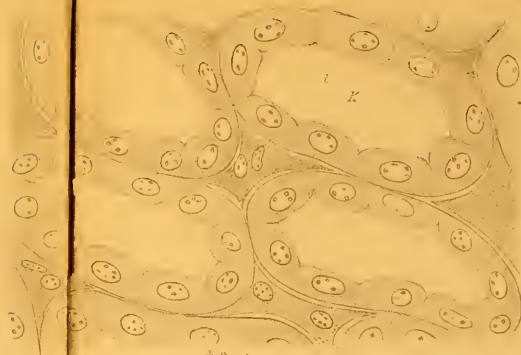


Fig. 8.

500th inch

PLANTAE TERRESTRIUM.

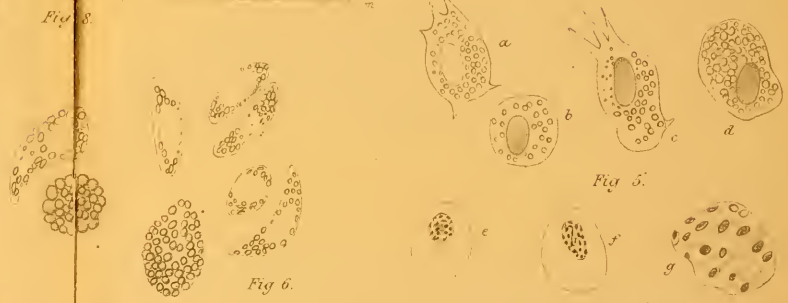


Fig. 4.

Fig. 5.

Fig. 6.

1000th inch
Scale for Fig. 4, 5 and 6



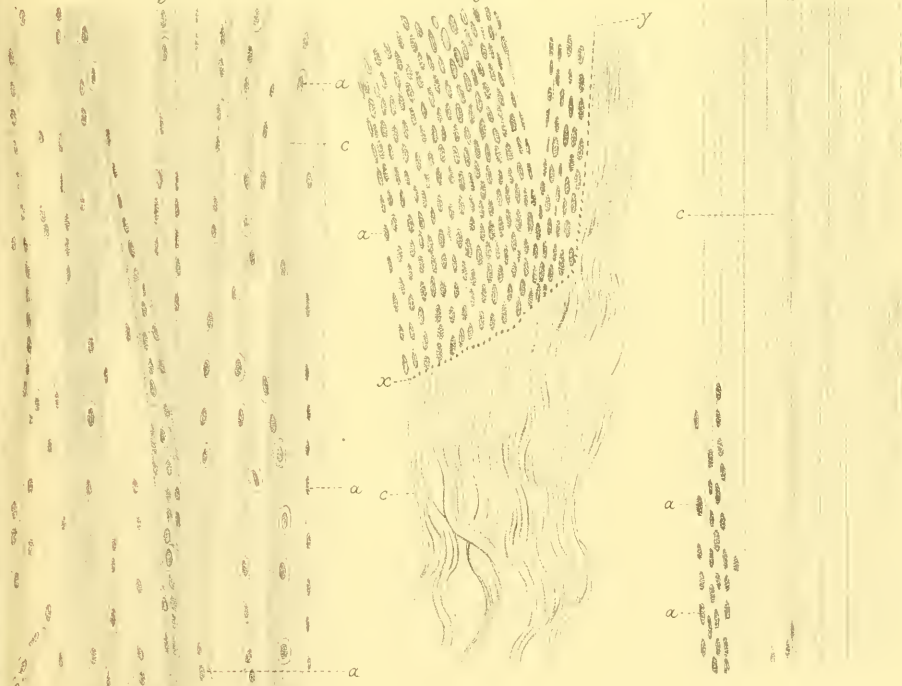
Fig. 7.



Fig. 2.

Fig. 3.

Fig. 4.



$\frac{1}{200}$ th inch
 Scale for all Figures.



Fig. 1.

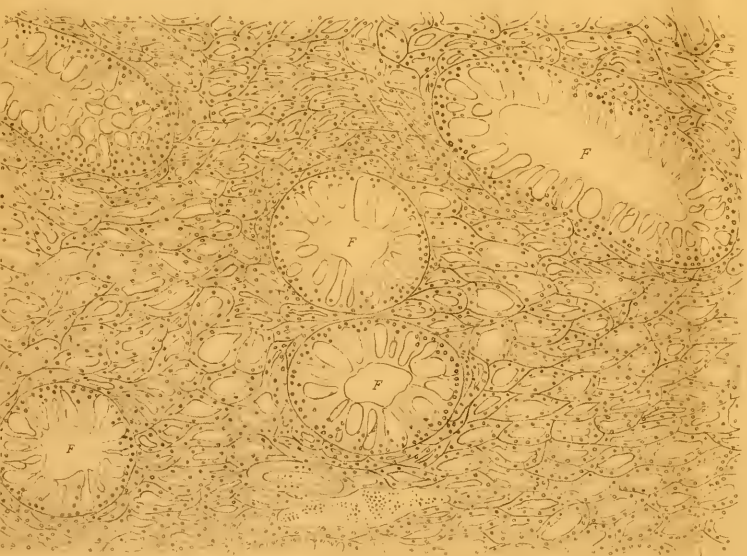


Fig. 2.



Fig. 3.

400 mic
Scale for Figs 2 and 3.
F. Ruhloff Ed.

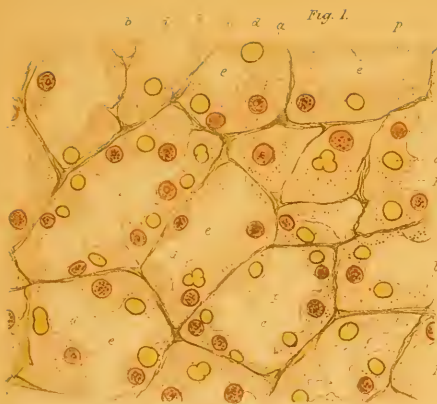


Fig. 1.



Fig. 2.

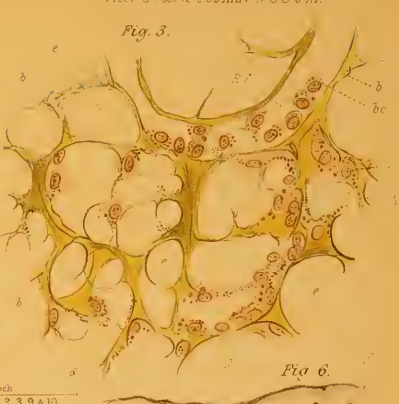


Fig. 3.

400th inch
Scale for Fig^s 1, 2, 3, 9 & 10.

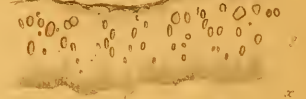


Fig. 6.

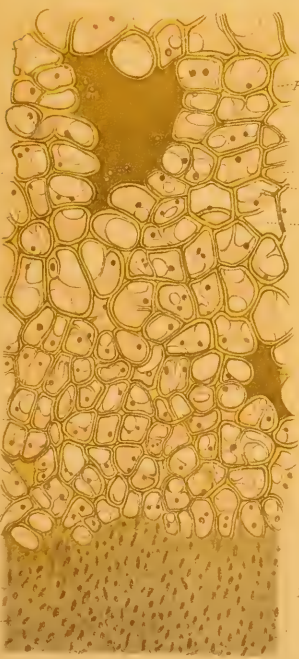


Fig. 4.

400th inch
Scale for Fig^s 4 and 7.

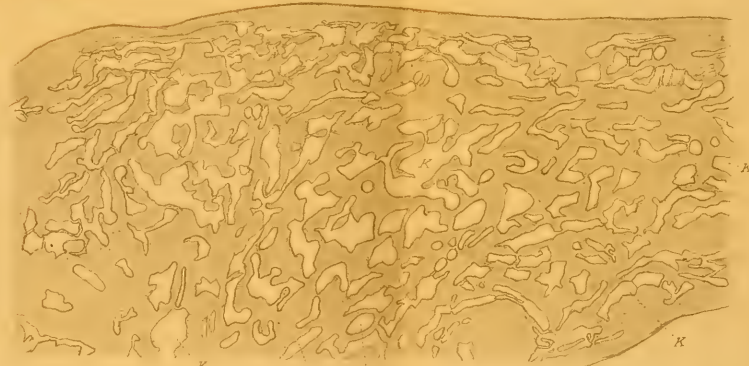


Fig. 5.

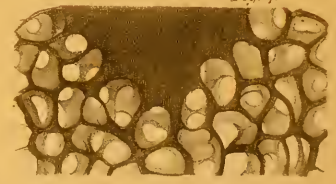


Fig. 7.



Fig. 9.



Fig. 10.



Fig. 8.

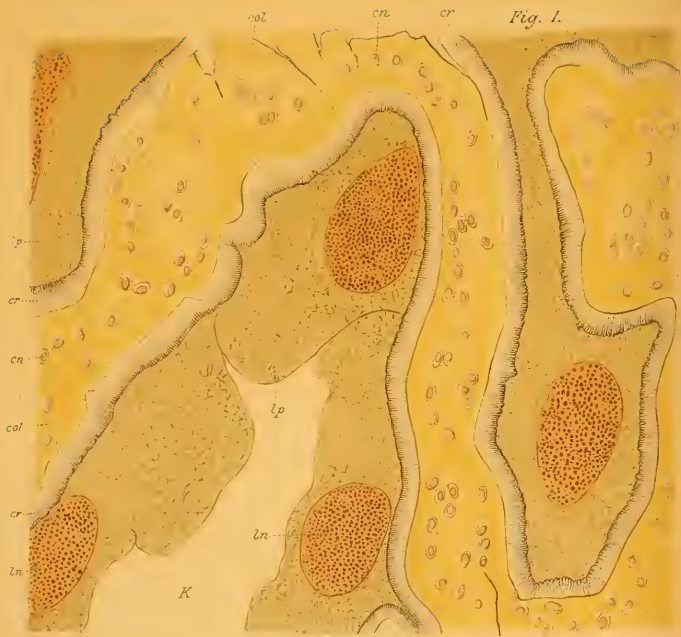


Fig. 1.

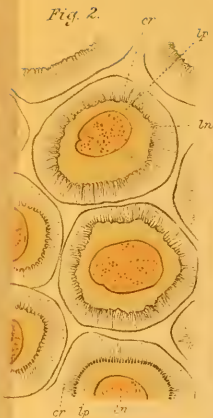


Fig. 2.

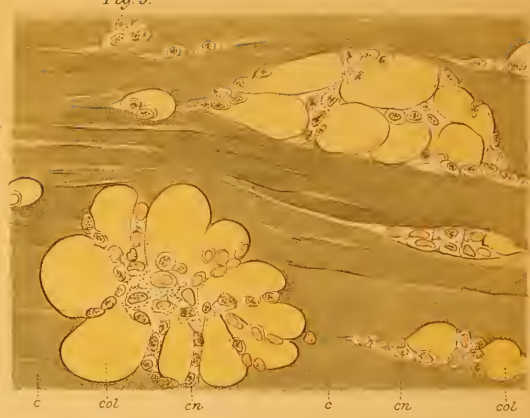


Fig. 3.

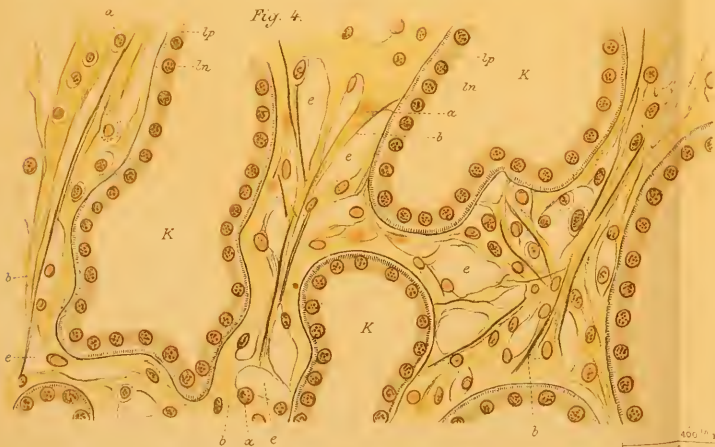


Fig. 4.

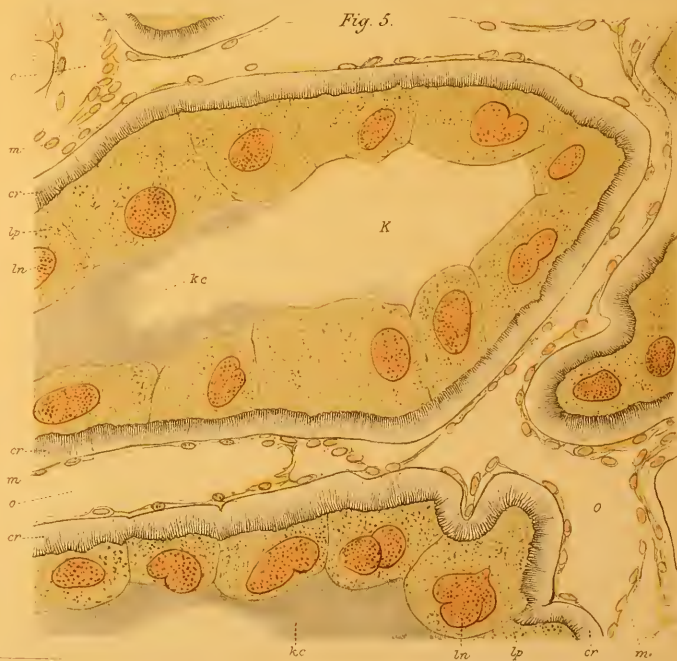


Fig. 5.

400 μ inch
Scale for all the Figures

Fig. 1.

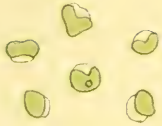


Fig. 3.



Fig. 4.



Fig. 5.



Fig. 2.

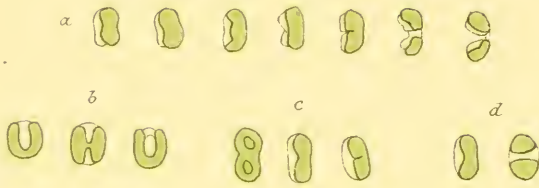


Fig. 6.



Fig. 7.

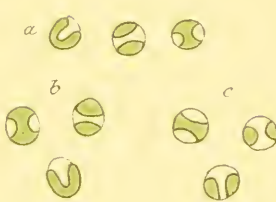


Fig. 8.

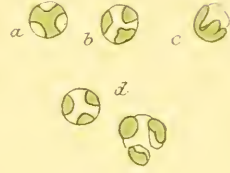


Fig. 9.

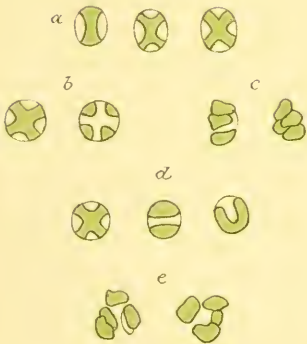


Fig. 10.



Fig. 11.



Fig. 12.



Fig. 13.

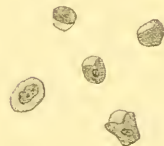


Fig. 14.



Fig. 15.



Fig. 16.

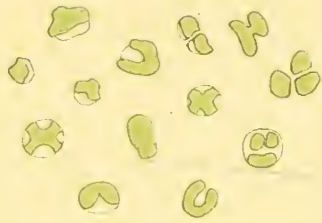


Fig. 17.



Fig. 18.



Fig. 19.

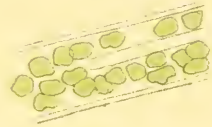


Fig. 20.



Fig. 21.

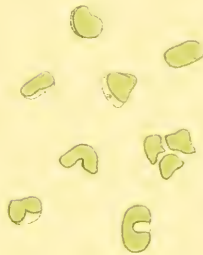


Fig. 22.

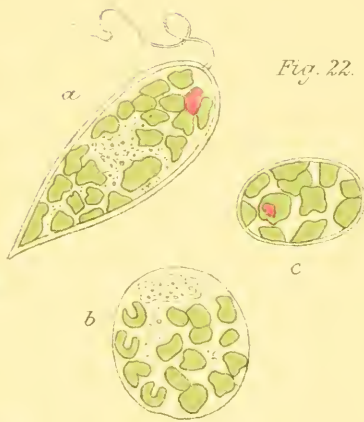


Fig. 23.

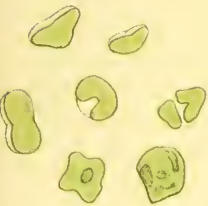


Fig. 24.



Fig. 27.



Fig. 25.



Fig. 26.

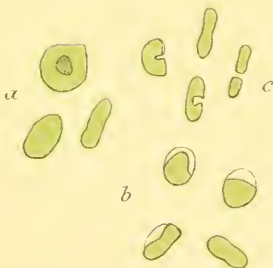


Fig. 28.



Fig. 1.

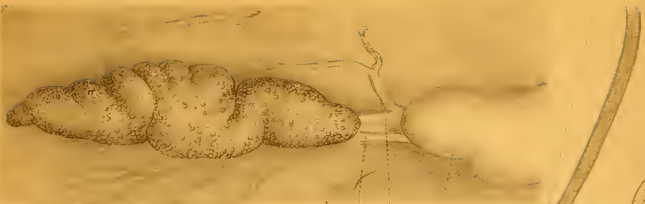


Fig. 3.



Fig. 7.



sd. BV SD. vc

Fig. 5.



Fig. 4.

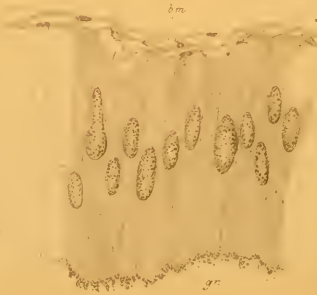


Fig. 6.

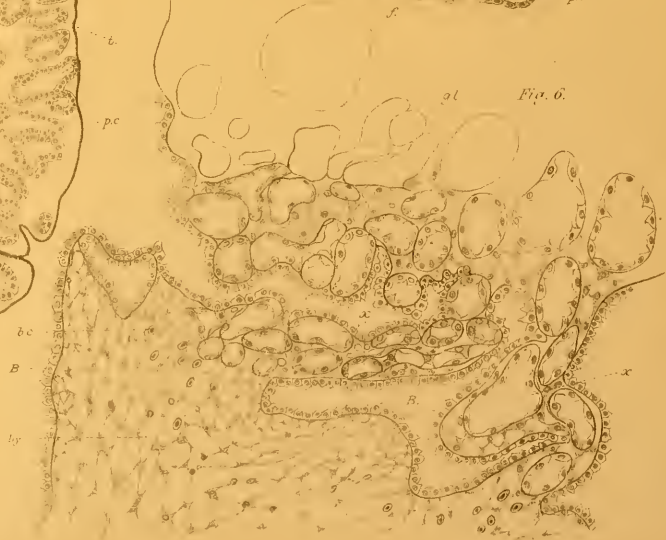
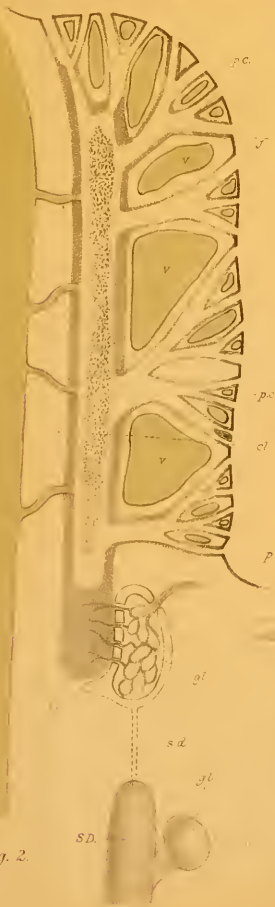


Fig. 2.



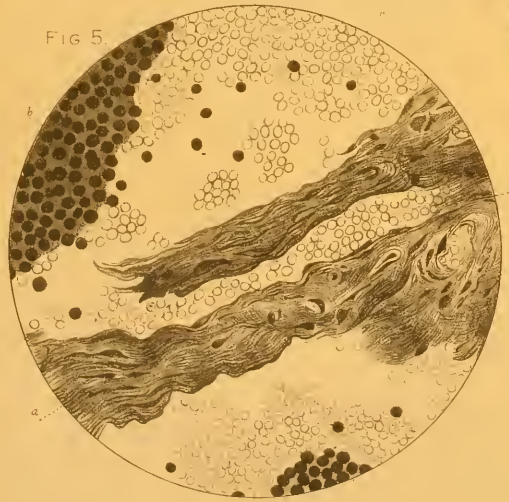
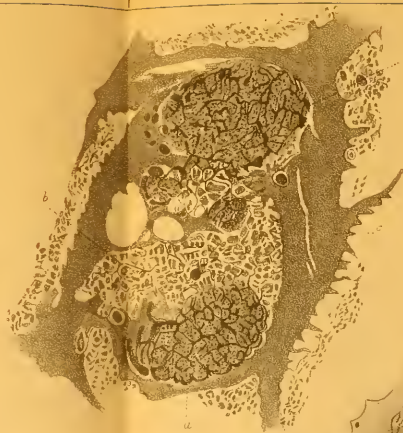


Fig. 1.



Fig. 2.

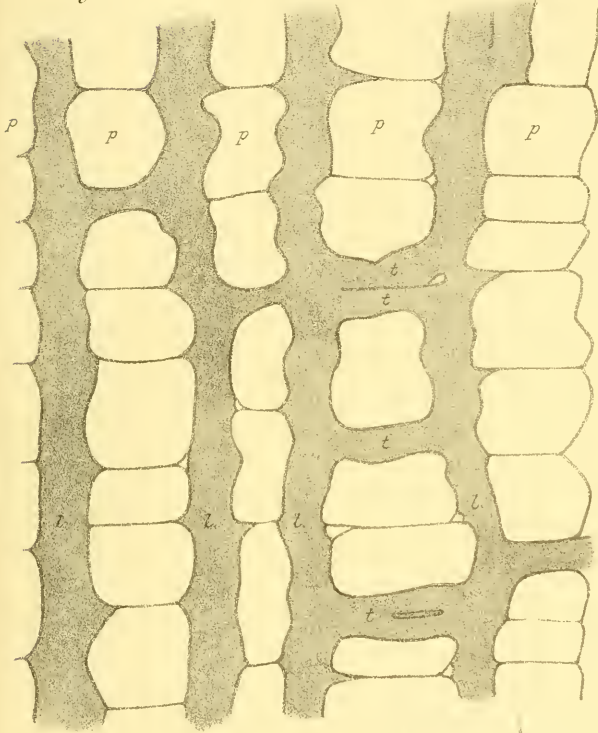


Fig. 3.

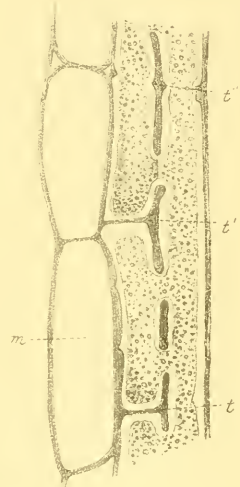


Fig. 4.

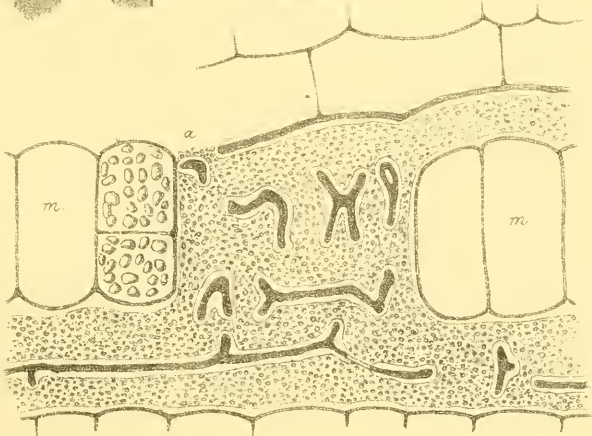


Fig. 1.



Fig. 2.



Fig. 3.



Fig. 4.

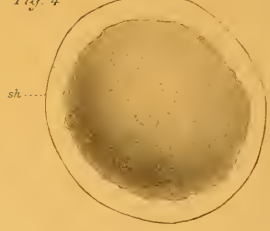


Fig. 5.

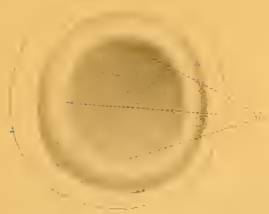


Fig. 6.



Fig. 7.



Fig. 8.



Fig. 9.

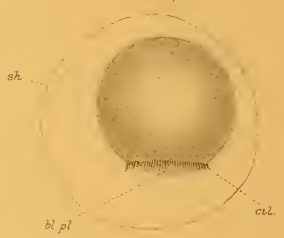


Fig. 10.



Fig. 11.



Fig. 12.



Fig. 16.



Fig. 17.



Fig. 13.



Fig. 14.



Fig. 15.



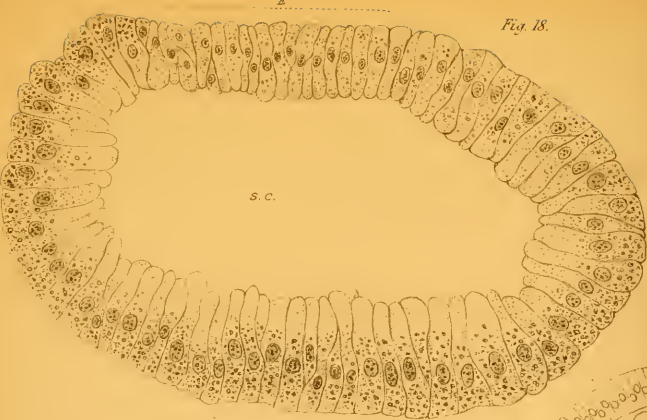


Fig. 18.

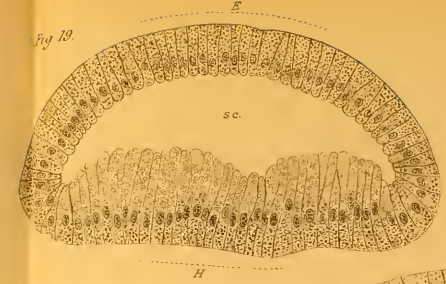


Fig. 19.

Fig. 22

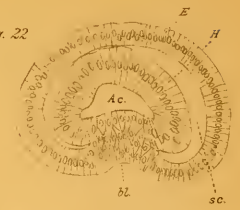


Fig. 20.

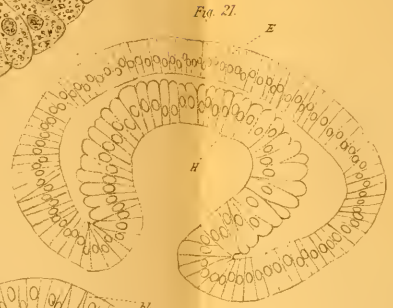


Fig. 21.

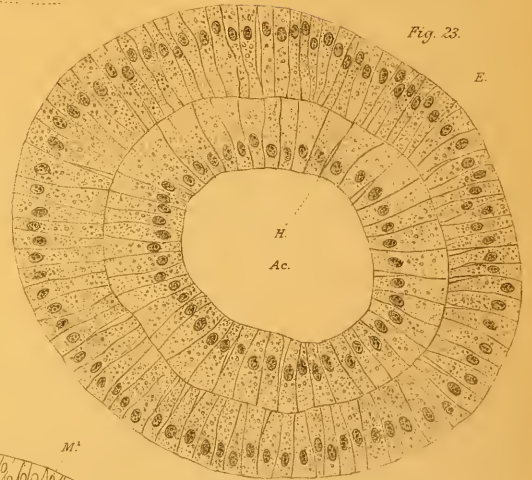


Fig. 23.

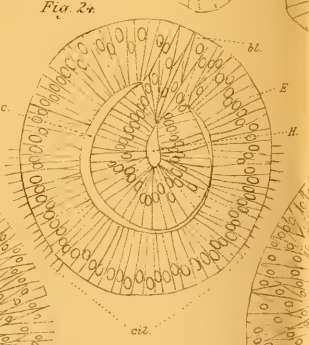


Fig. 24.

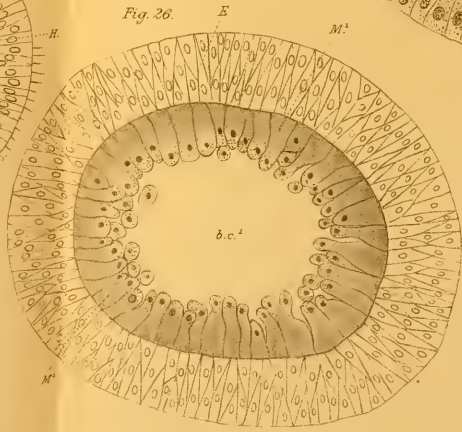


Fig. 26.

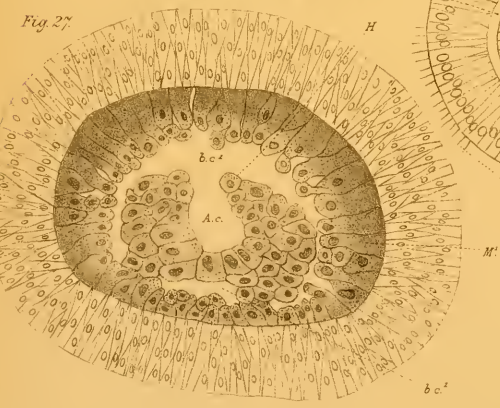


Fig. 27.

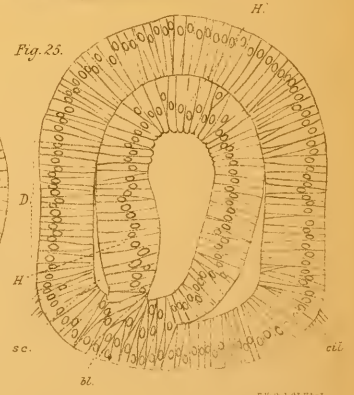


Fig. 25.

Fig. 28.

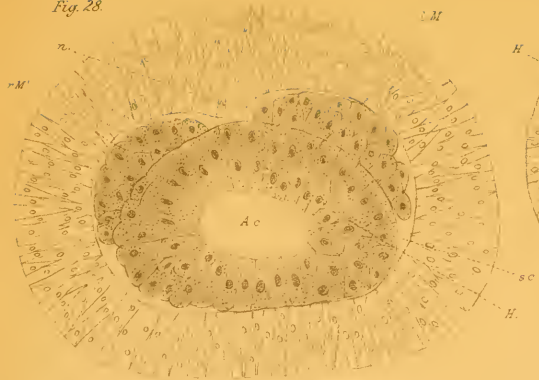


Fig. 29.

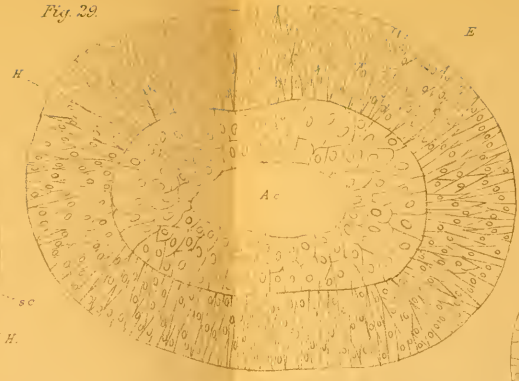


Fig. 31.



Fig. 30.

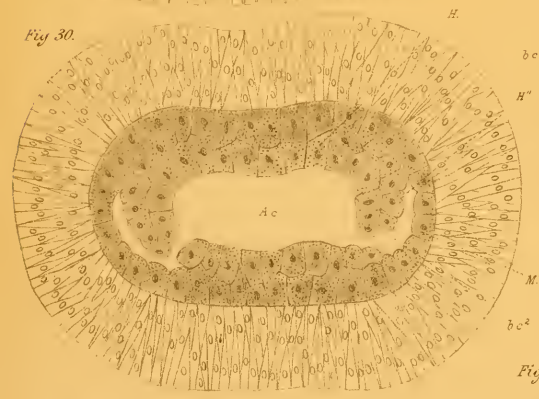


Fig. 34.

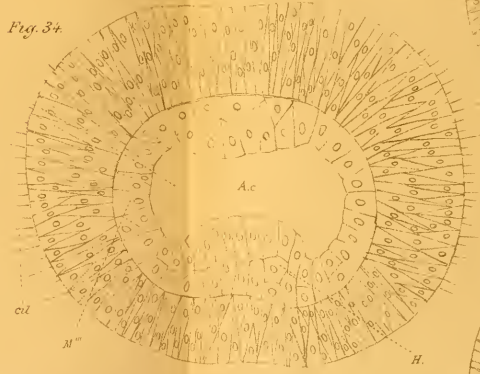


Fig. 32.

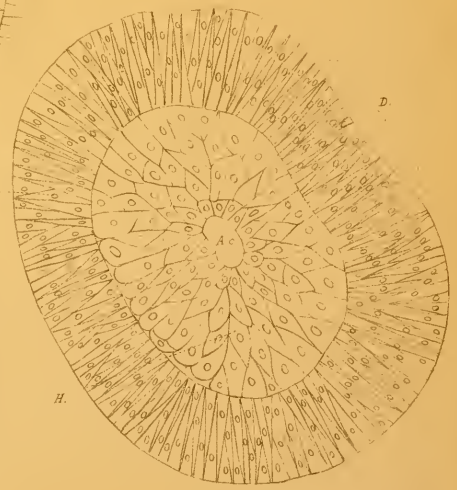


Fig. 33a.

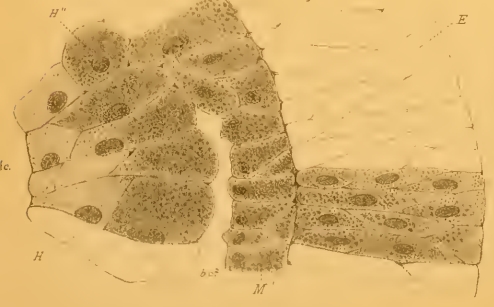


Fig. 33.

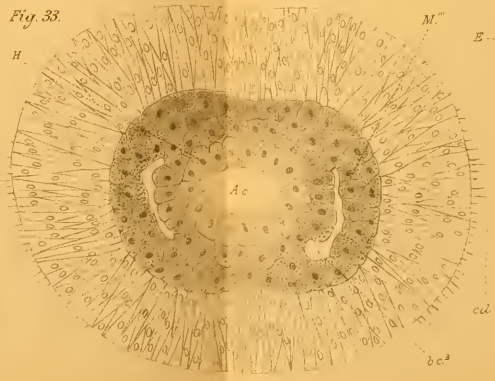


Fig. 35.

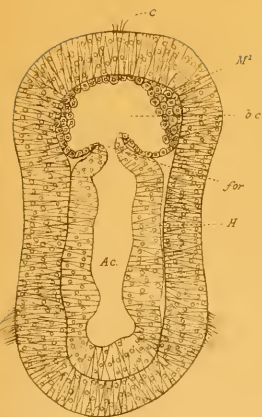


Fig. 36.

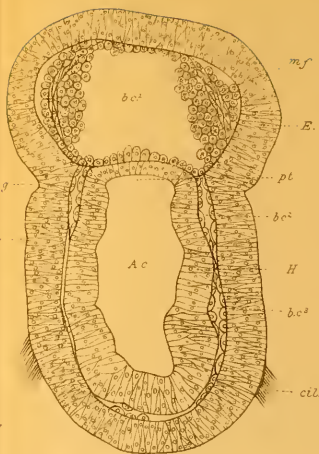


Fig. 37.

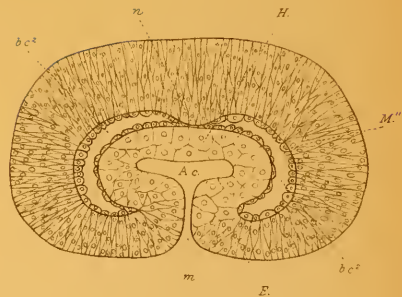


Fig. 38.

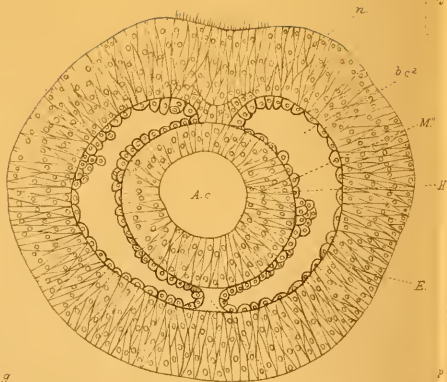


Fig. 39.

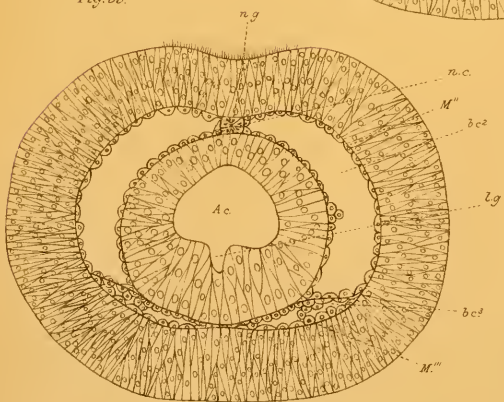


Fig. 40.

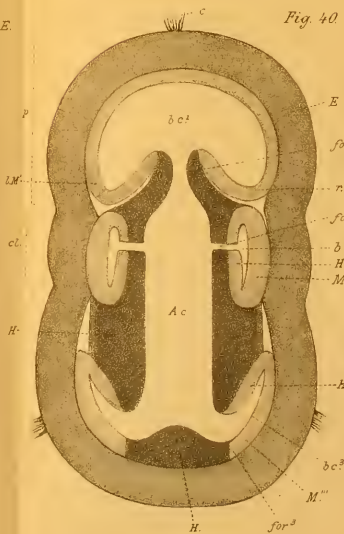


Fig. 41.

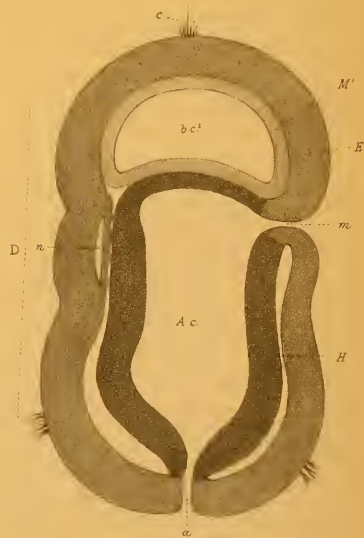


Fig. 1.



Fig. 3.

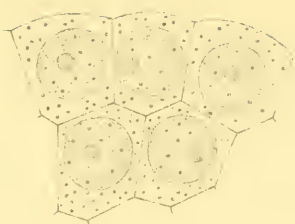


Fig. 6.



Fig. 2.

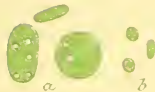


Fig. 5.



Fig. 4.



Fig. 9.



Fig. 7.

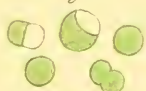


Fig. 13.



Fig. 14.



Fig. 8.



Fig. 11.



Fig. 12.

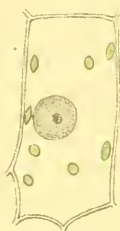


Fig. 10.



Fig. 15.

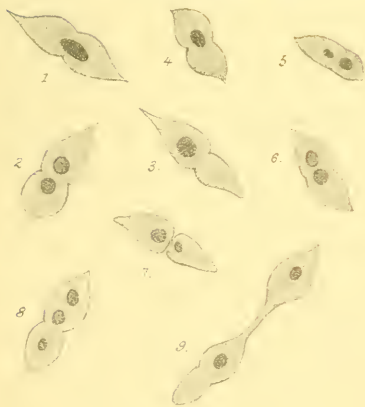


Fig. 17.



Fig. 16.

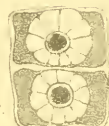
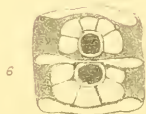


Fig. 1



Fig. 2.



Fig. 3.





FIG. 1.

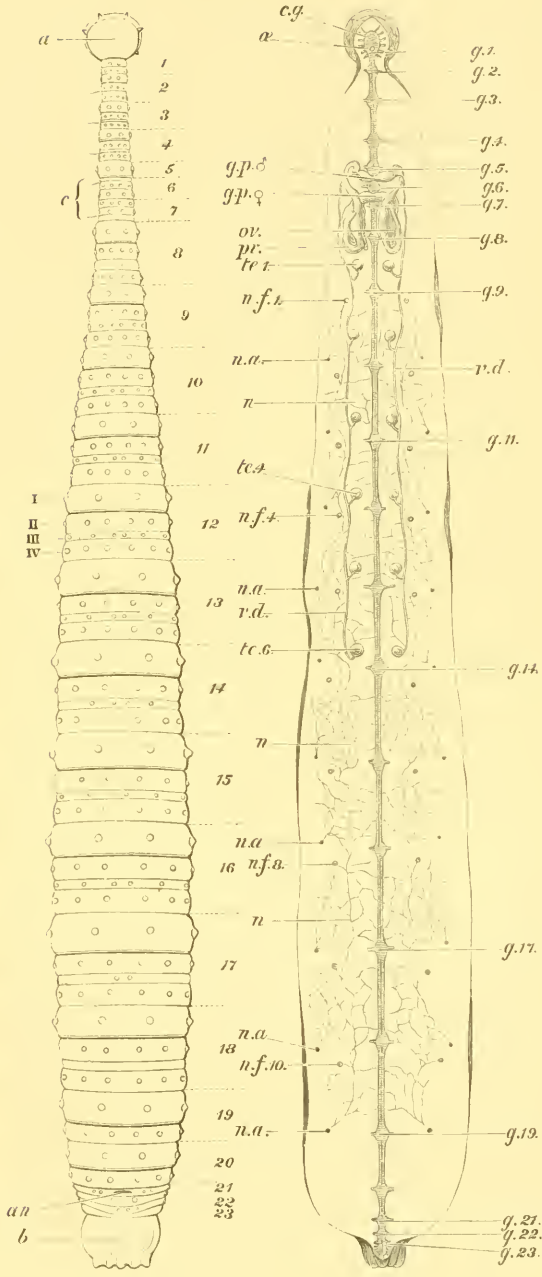


FIG. 2.

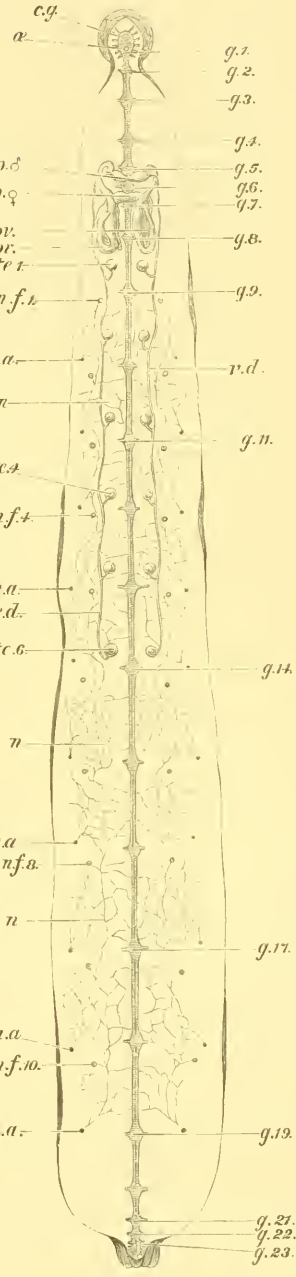


FIG. 3.

PONTOBELLA.

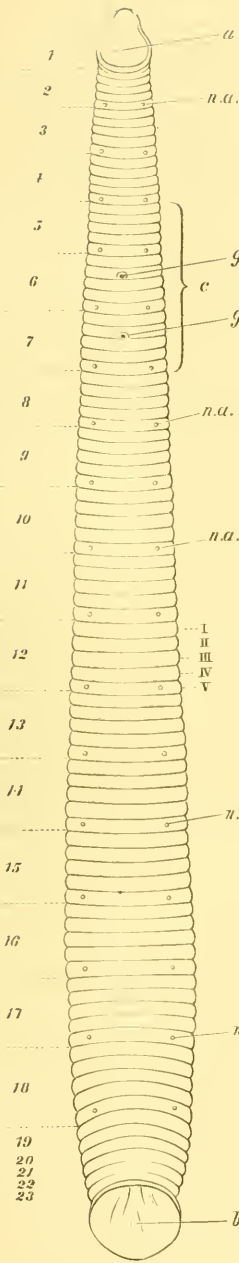


FIG. 4.

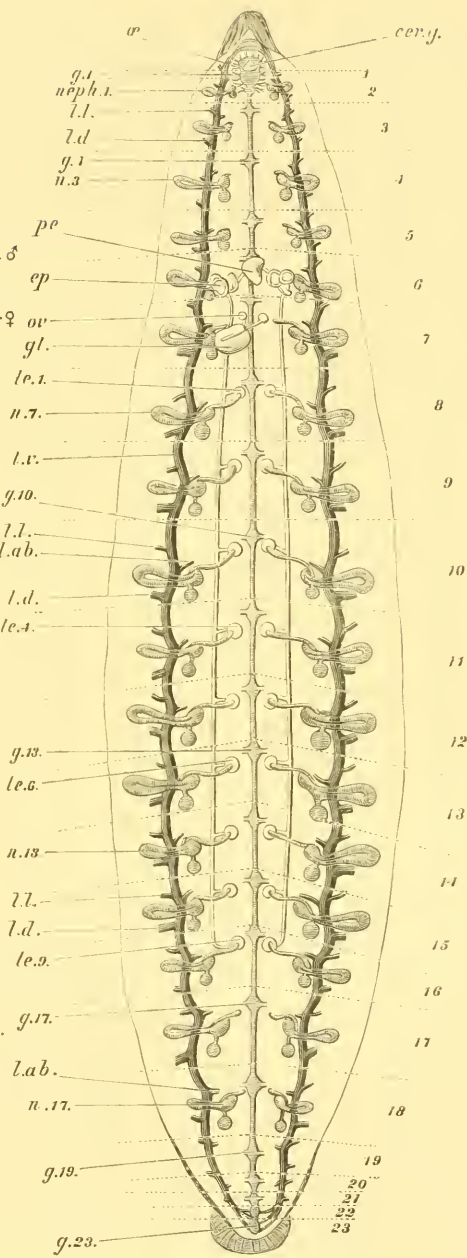


FIG. 5.

HIRUDO.

g.p. ♂

Fig. 6.

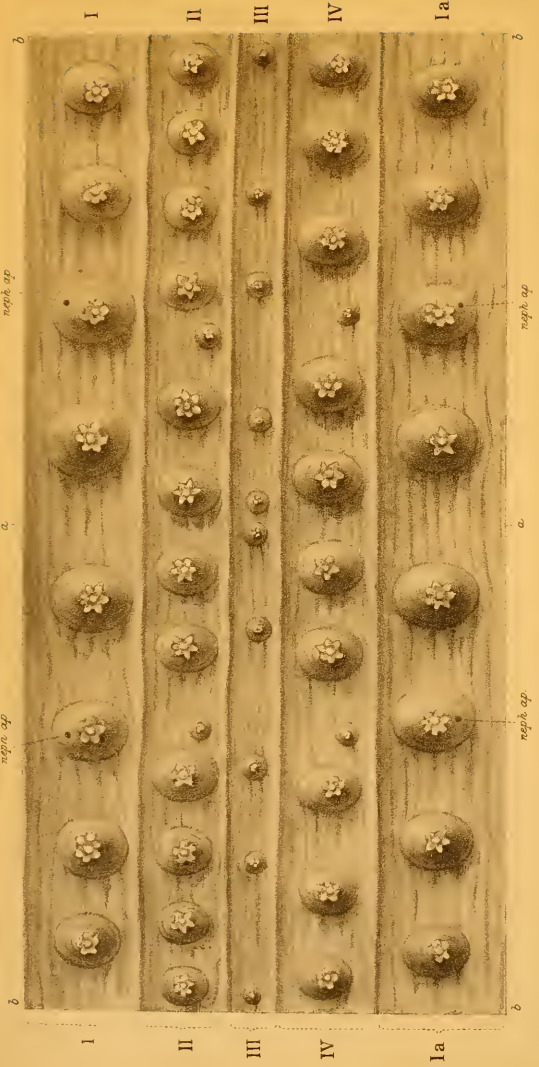


Fig. 7.

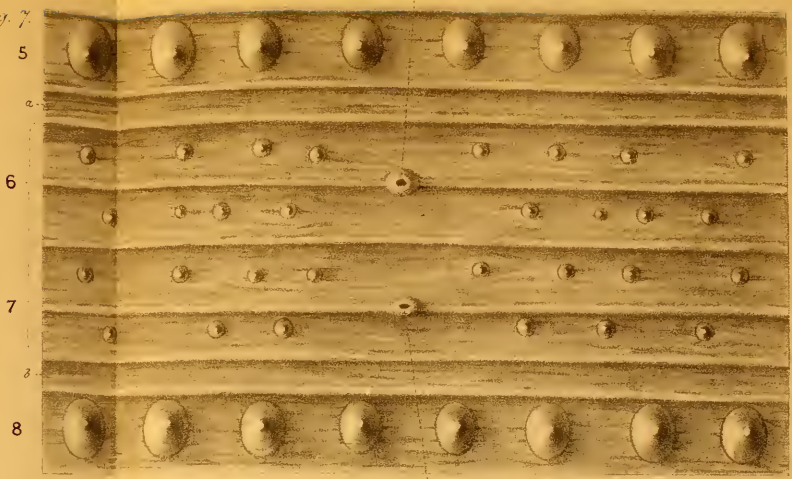


Fig. 8.

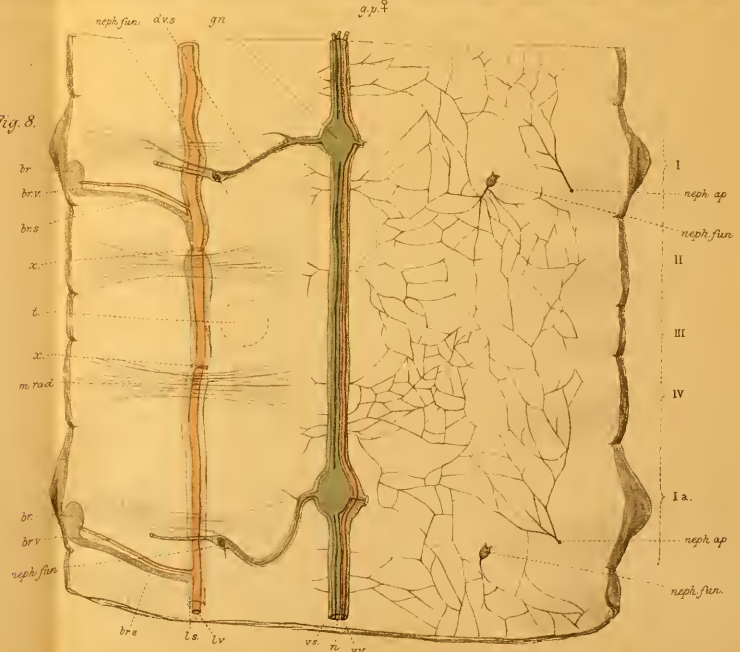


Fig. 9.

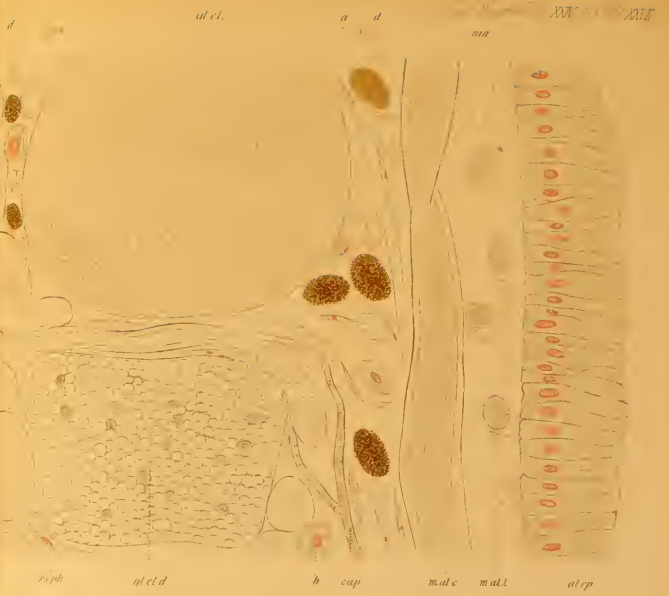


Fig. 10.

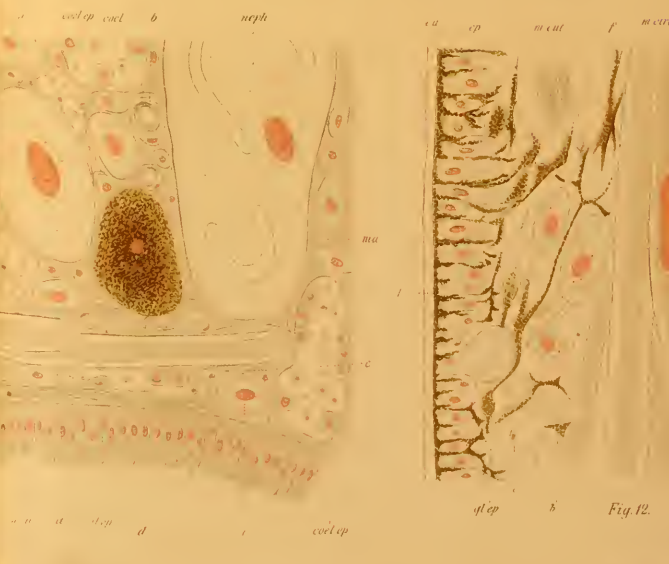
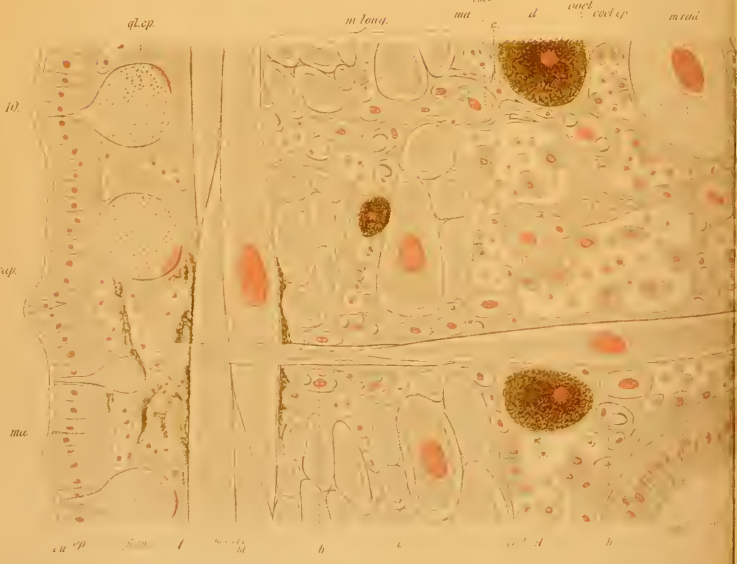


Fig. 12.

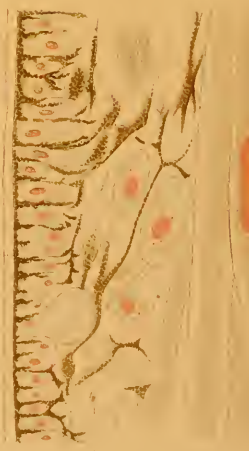


Fig. 7.

ep cap

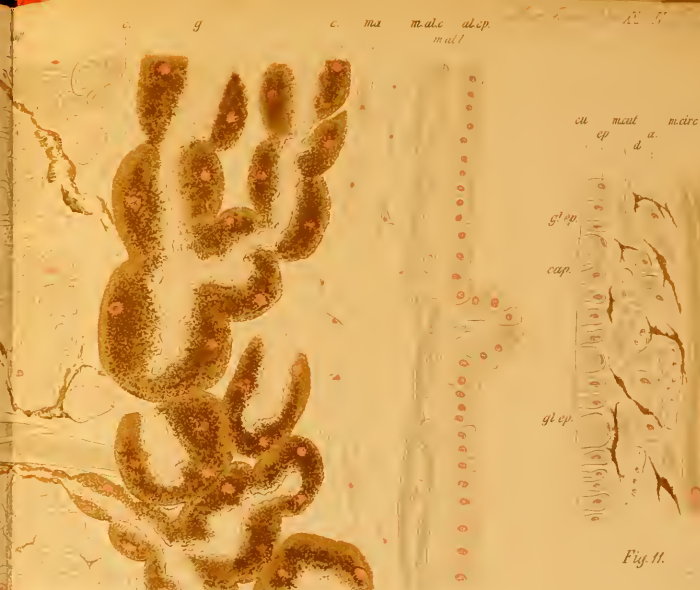
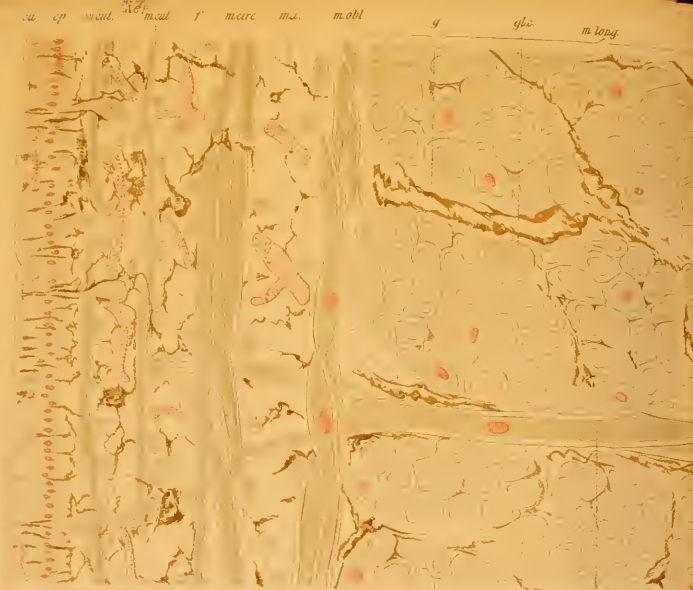


Fig. 11.

Fig. 14.

ep cap

ep cap

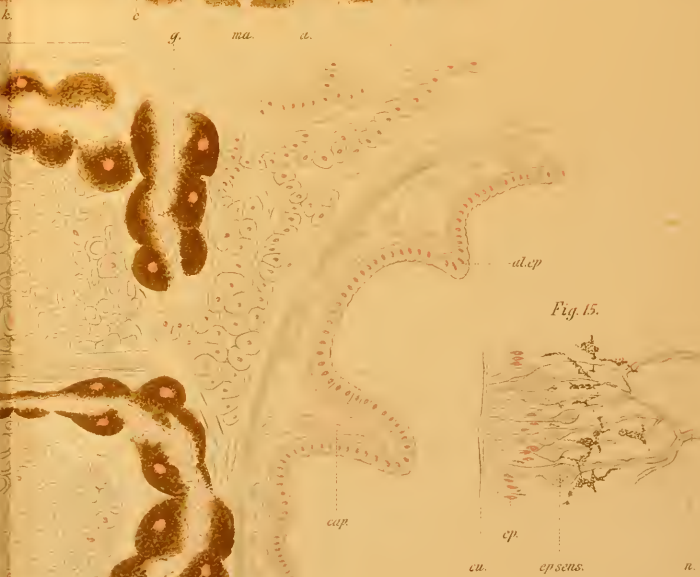
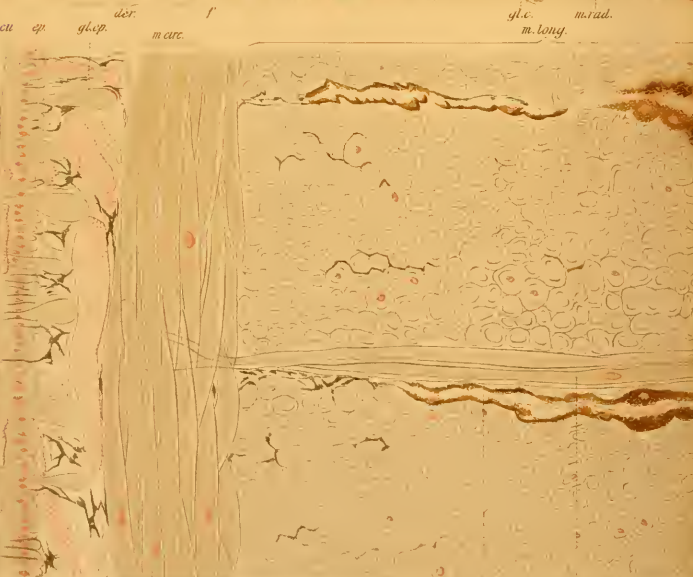


Fig. 15.

cu. ep sens. n.

f. cap. m. circ. m. obl.

k. m. rad.

g. m. a. c. m. a. l. a. l. e. p. m. a. l. l.

Fig. 16.

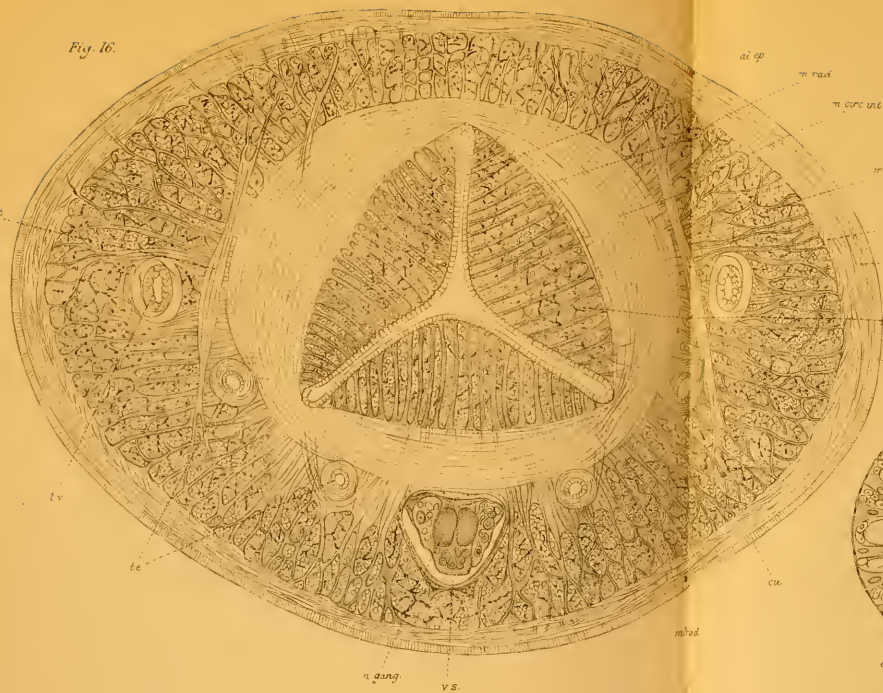


Fig. 17.

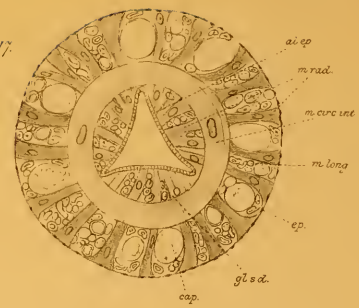


Fig. 19.



Fig. 18.

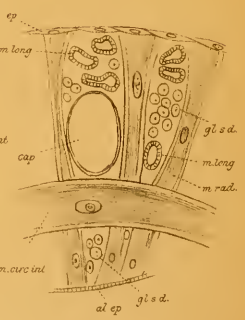


Fig. 20.

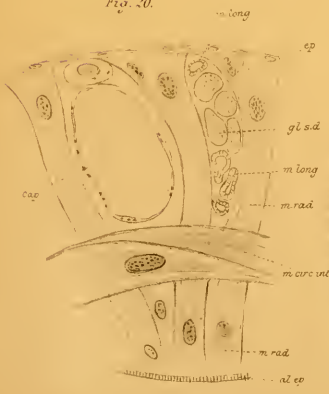


Fig. 21.

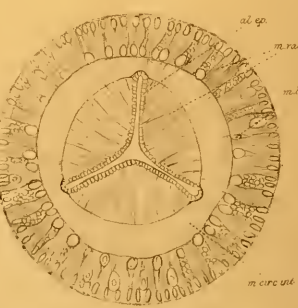


Fig. 23.

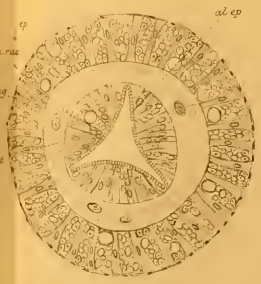


Fig. 22.

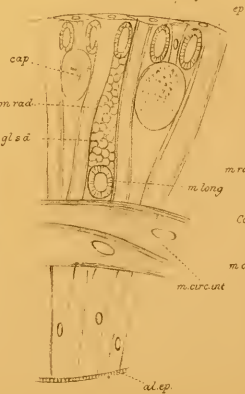
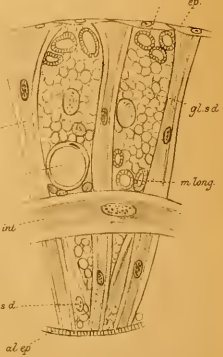


Fig. 24.



25

a

b

a

b

c

25

a

c

a

b

20.

gr

gr

gr

27

n

end.

end.

29

30.

30

d

f

e

31

33.

34.

35.

30

37

35

32

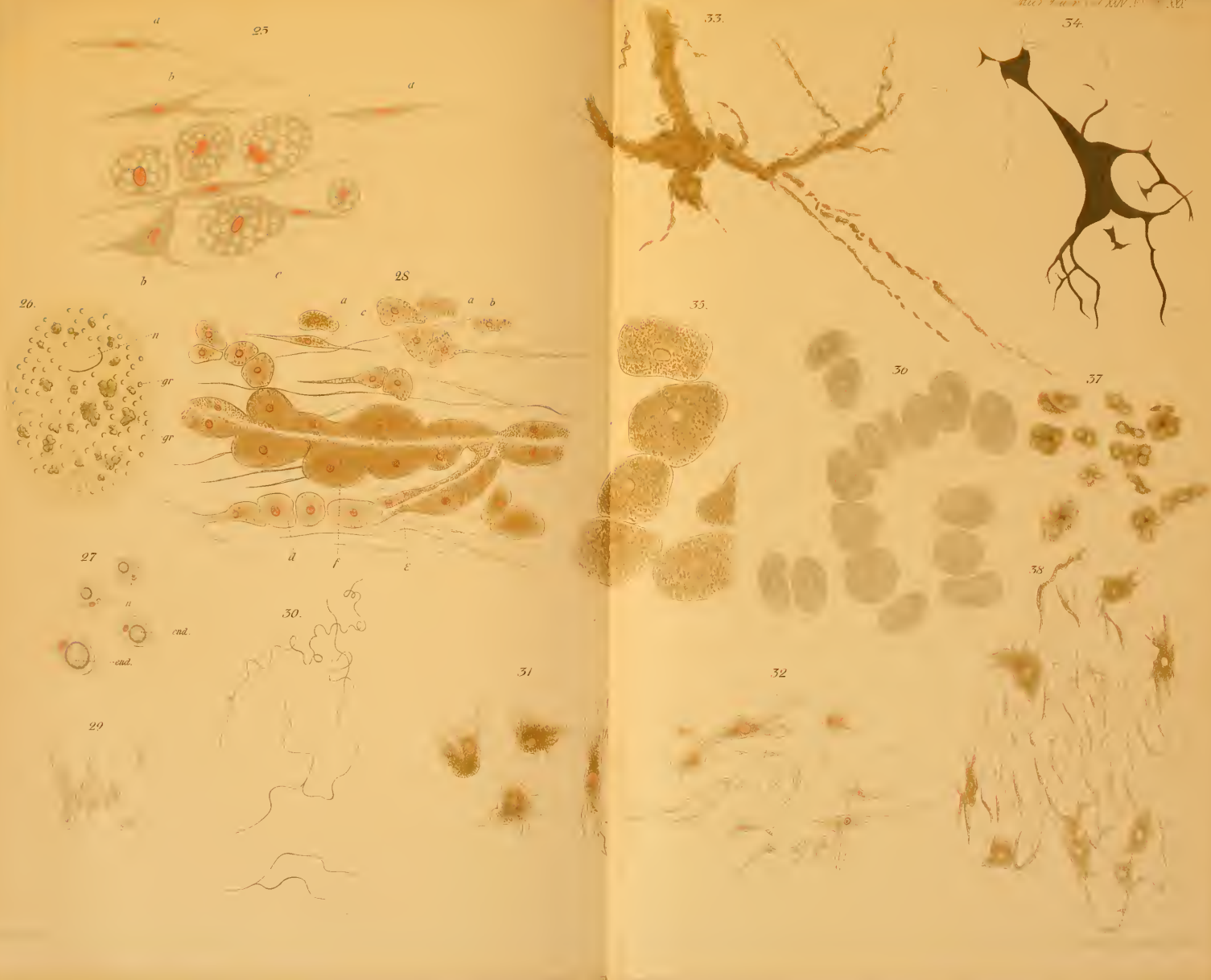


Fig. 48

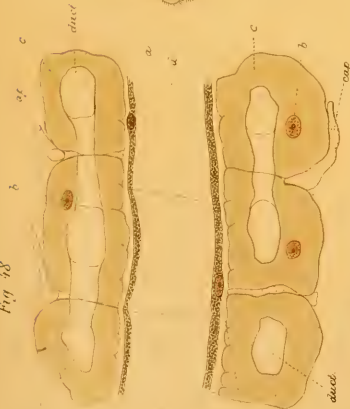


Fig. 49

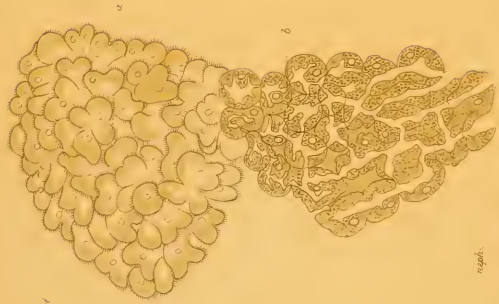


Fig. 50

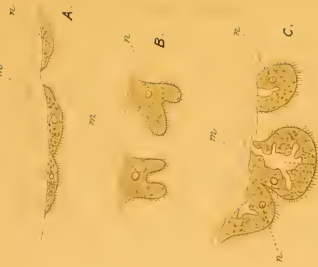


Fig. 51

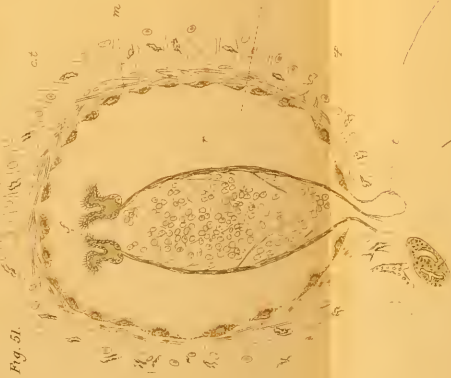


Fig. 52



Fig. 55



Fig. 56



Fig. 58

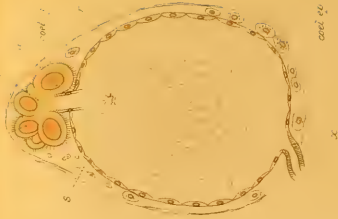


Fig. 54

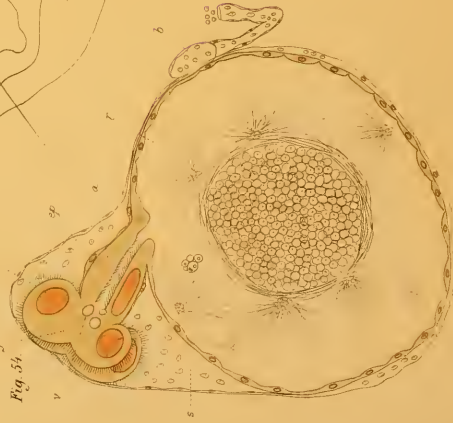


Fig. 53



Fig. 57



Fig. 65.



Labels for Fig. 65: neph, n, m-d, neph, n

Fig. 59.

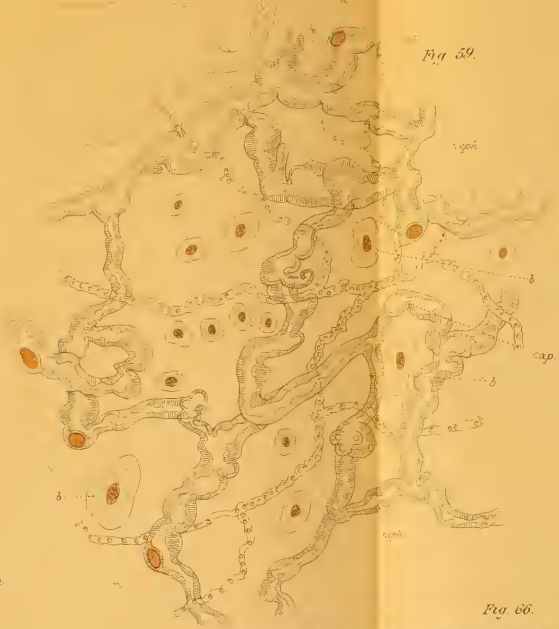
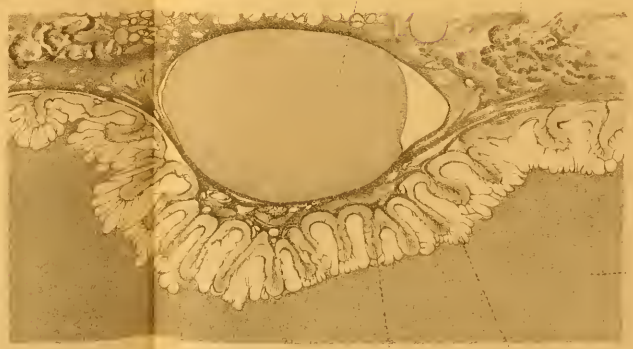


Fig. 59.

Fig. 60.



Fig. 66.



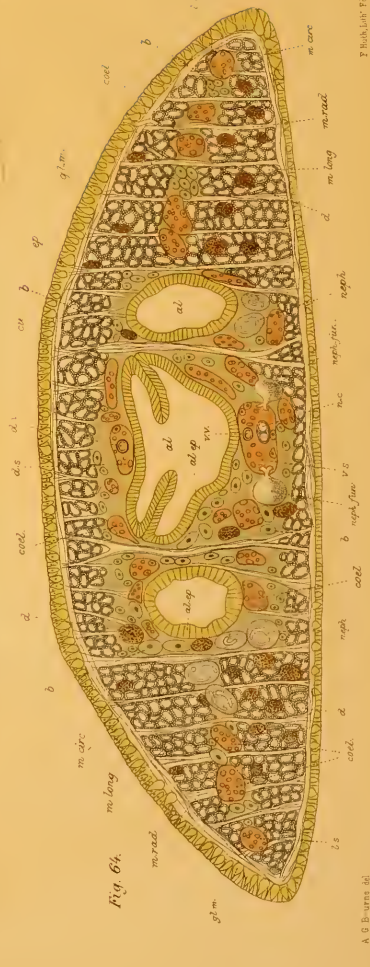


Fig. 63. PONTOBDELLA.

Fig. 64. CLEPSINE.

Fig 1

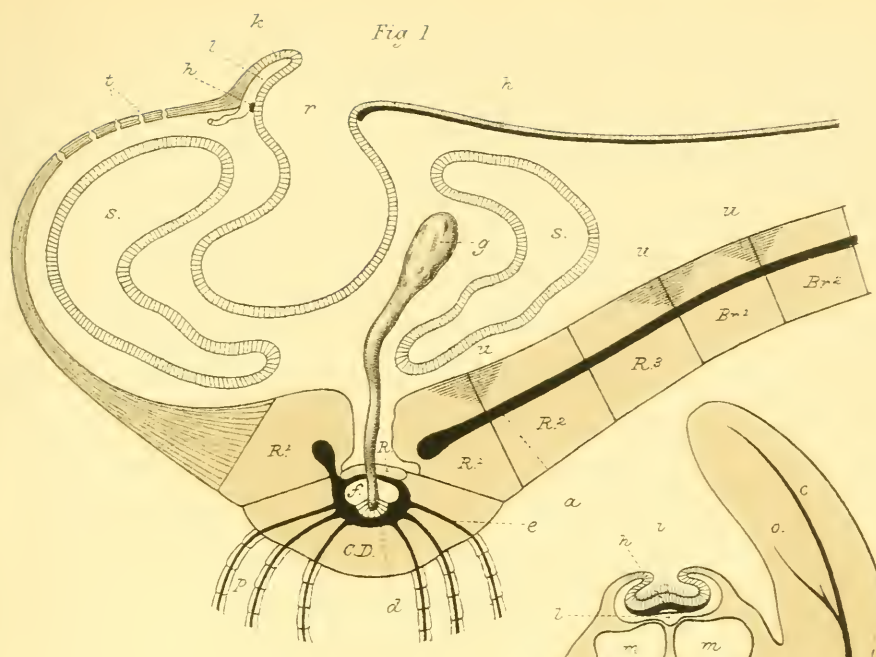
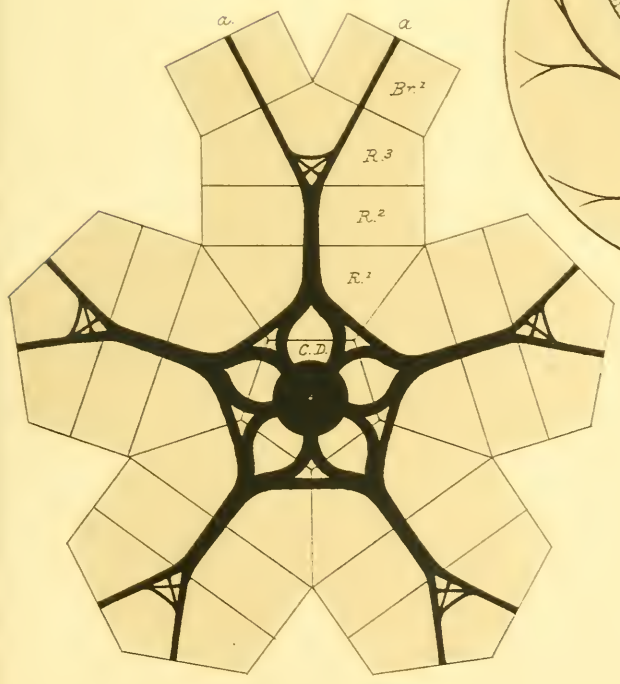
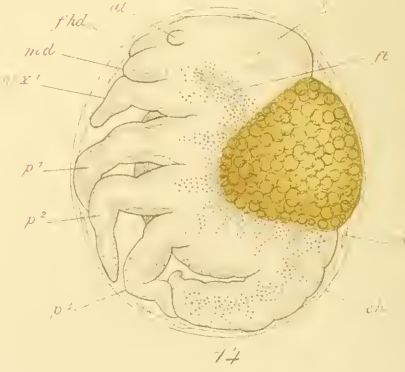
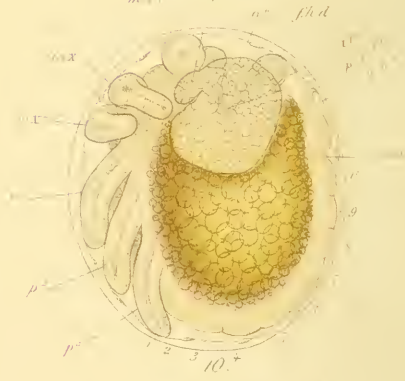
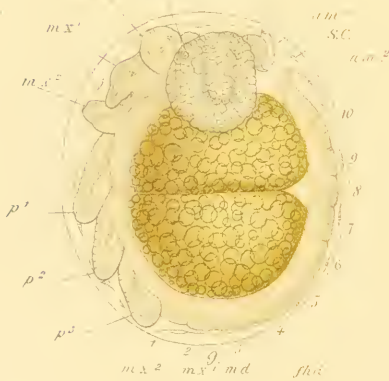
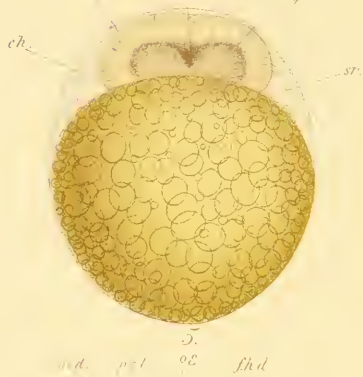
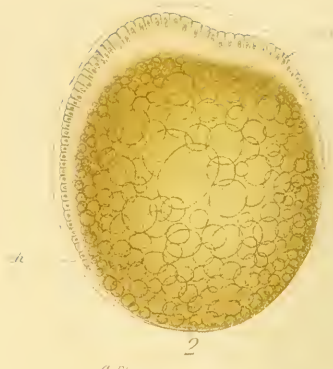


Fig 2.



Fig 3.



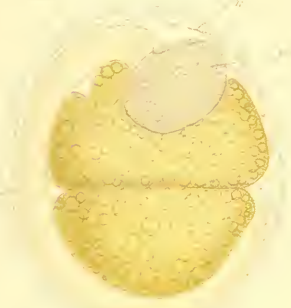




2



4



6



8



10



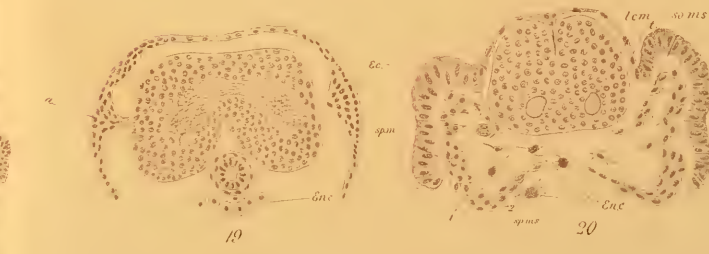
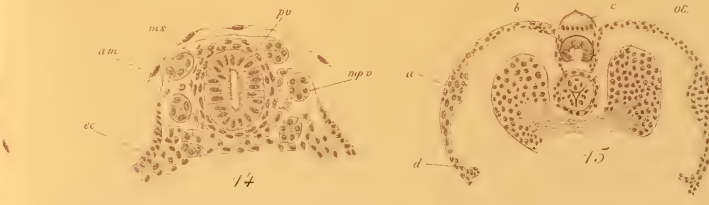
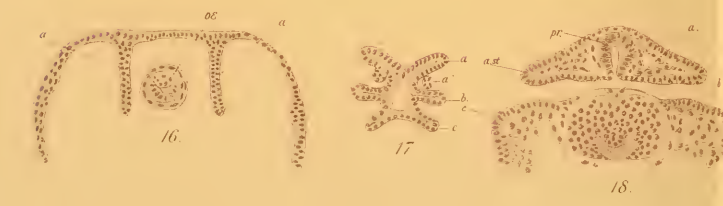
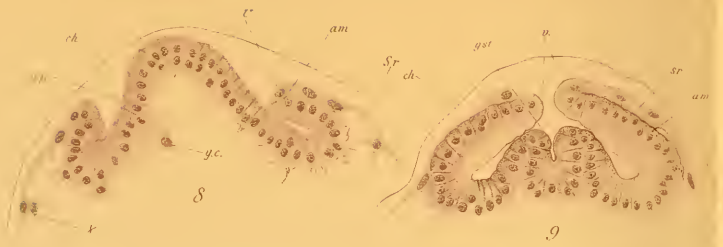
12

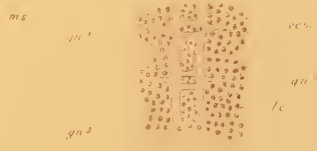
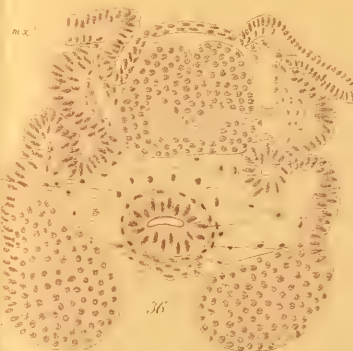
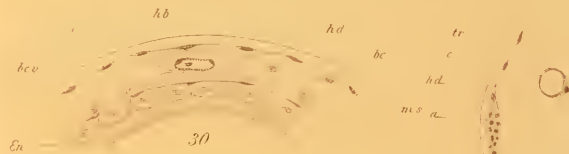
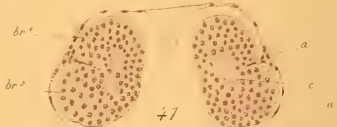
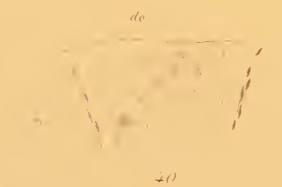
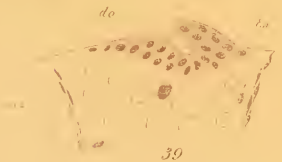
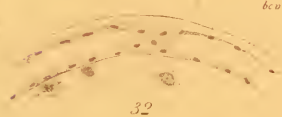
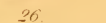
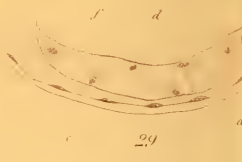
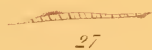
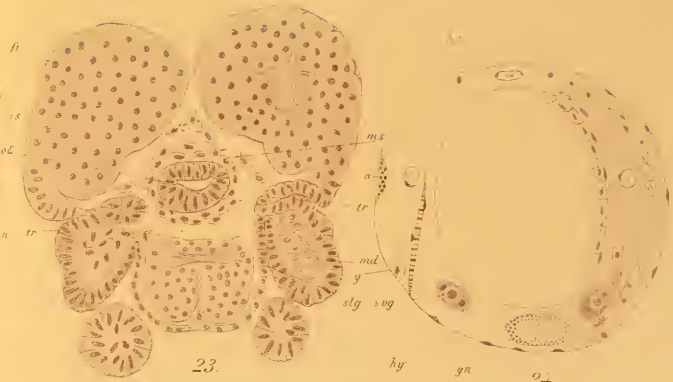


14



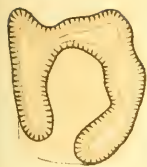
16



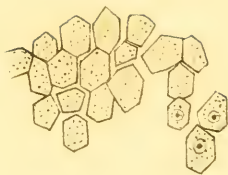




19.



20.



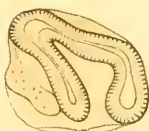
20a.



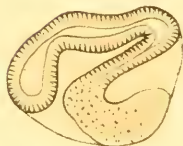
21.



22.



23.



25.



24.



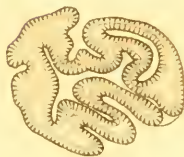
26.



25a.



28.



29.



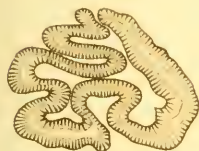
31.



30.



27.



32.



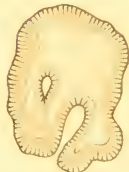
33.



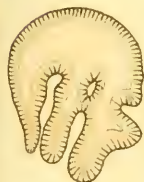
34.



35.



36.



37.



38.



39.

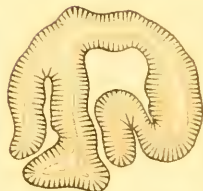


Fig 1.

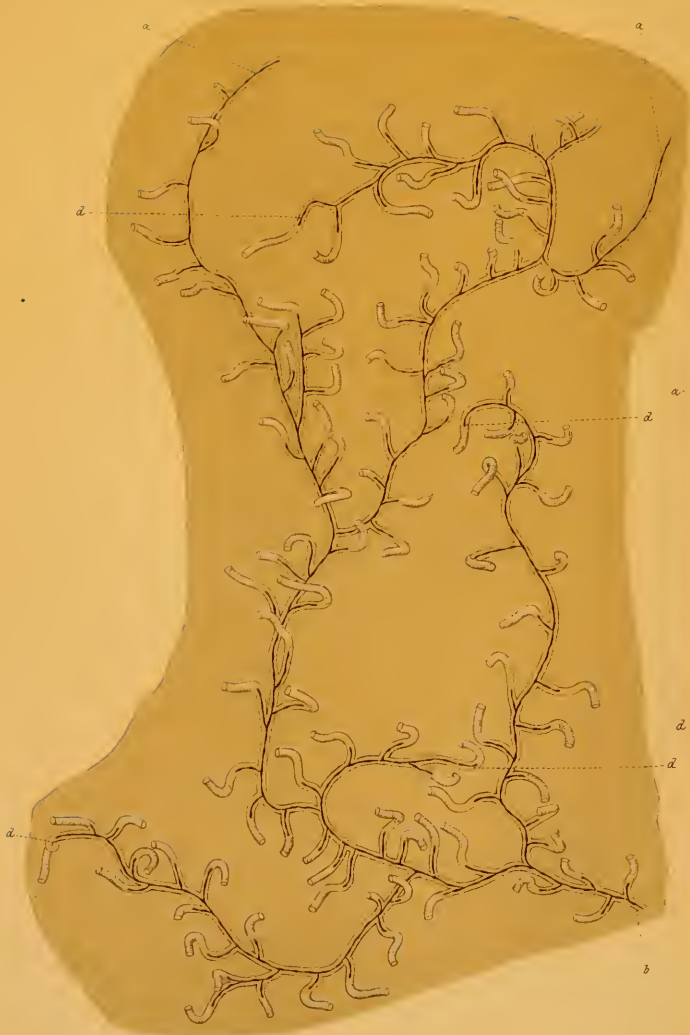
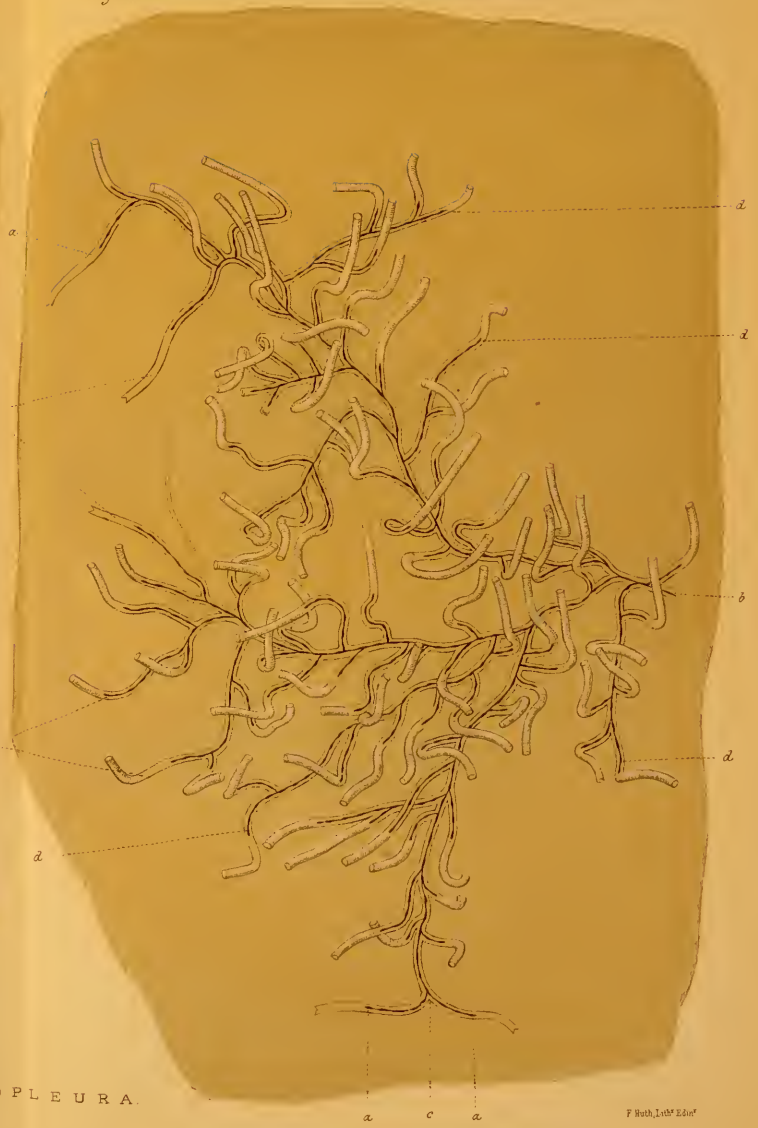


Fig 2.



Mon. Faun. Brit. Mus. XXXVII. pls.



RHABDOPLEURA.

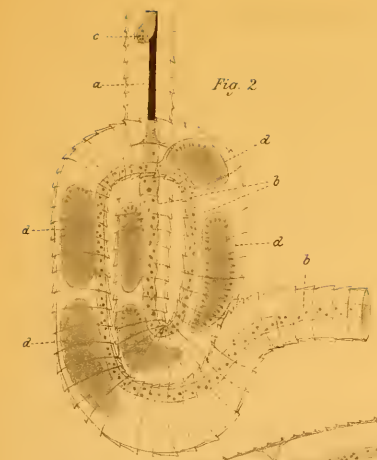


Fig. 2

Fig. 4

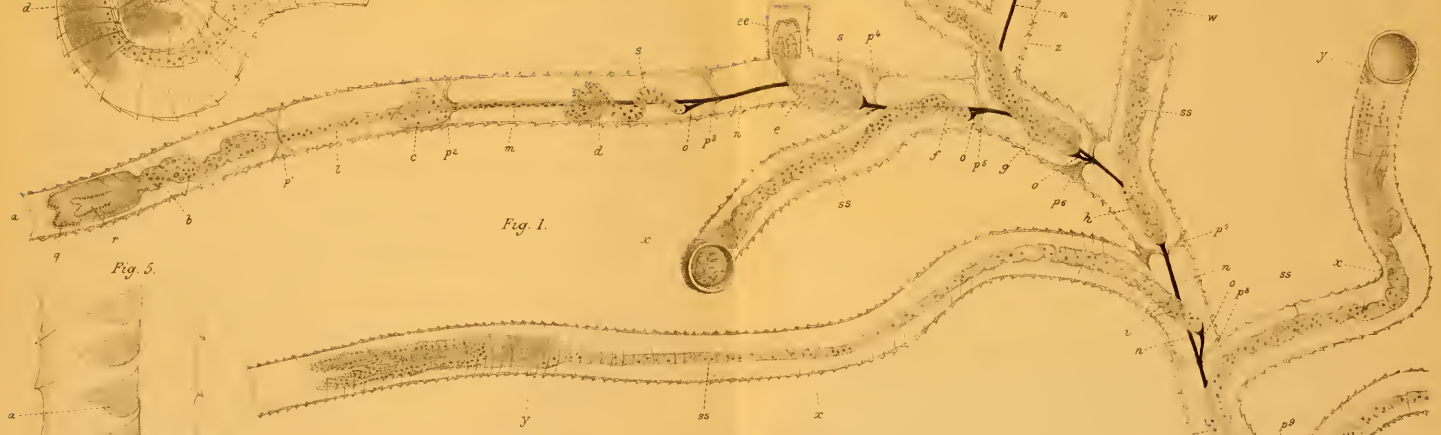


Fig. 1.

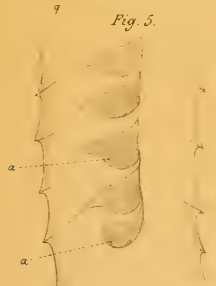


Fig. 5.

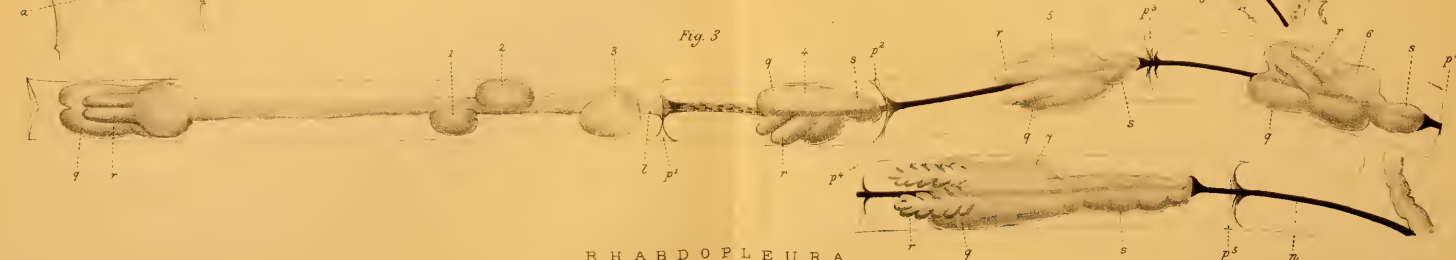


Fig. 3

RHABDOPLEURA.

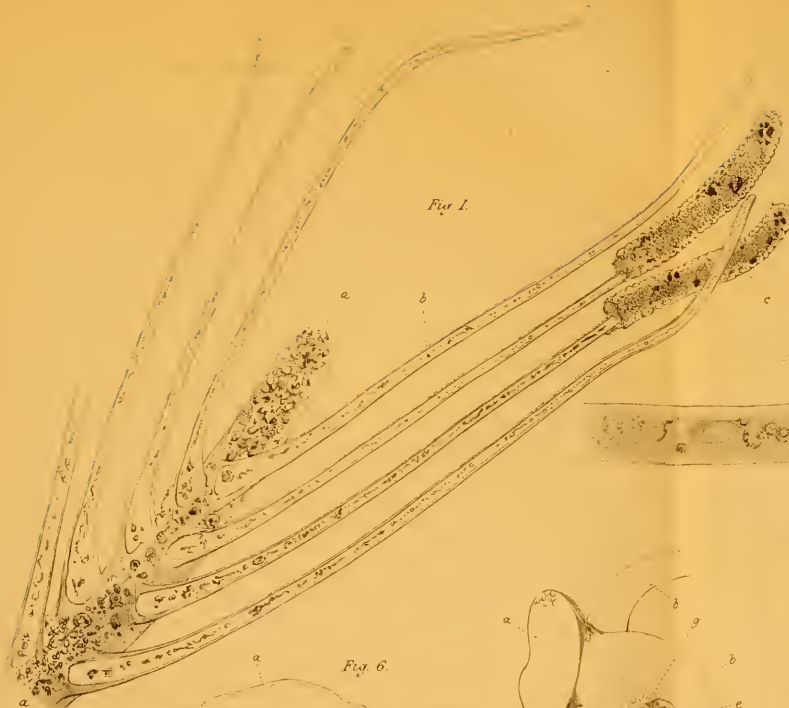


Fig. 1.



Fig. 2.

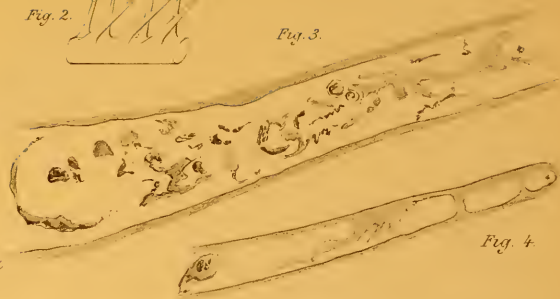


Fig. 3.



Fig. 4.



Fig. 5.



Fig. 6.



Fig. 7.



Fig. 9.



Fig. 11.

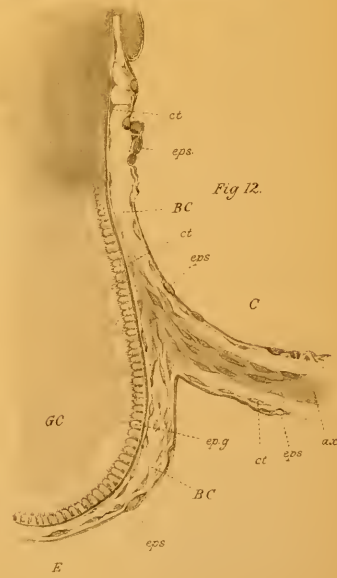


Fig. 12.



Fig. 8.

Fig. 1.

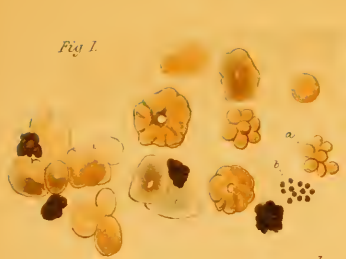


Fig. 2.

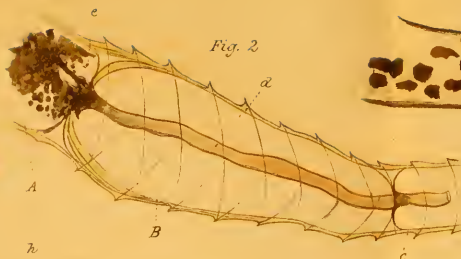


Fig. 3.



Fig. 4.



Fig. 5.



Fig. 6.



Fig. 7.

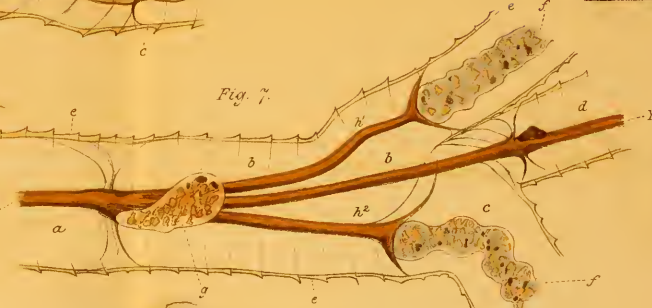


Fig. 8.



Fig. 9.

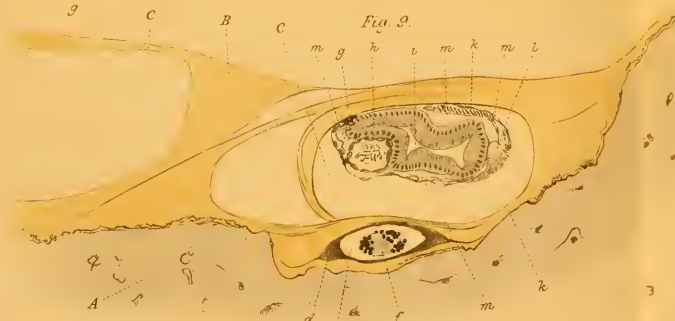


Fig. 10.

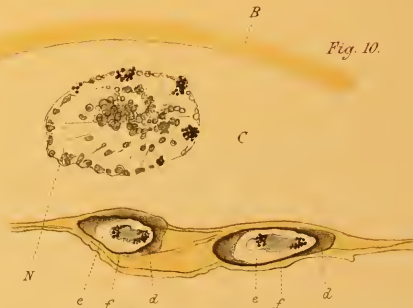


Fig. 11.



Fig. 12.

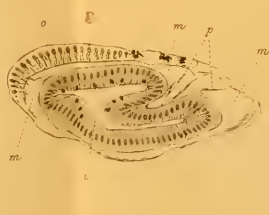
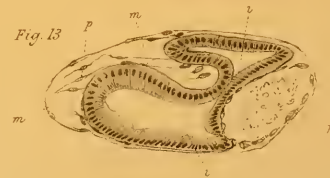
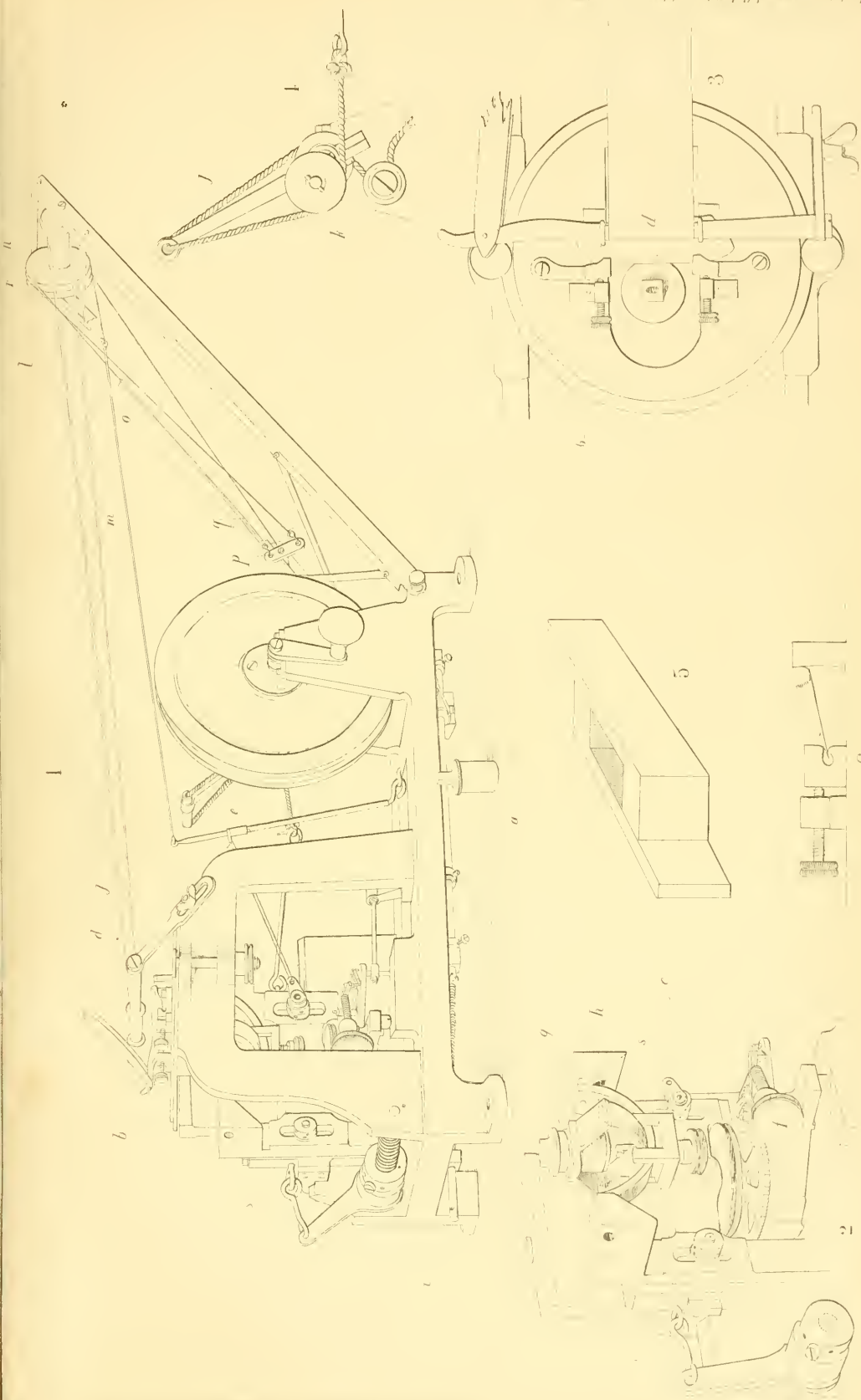
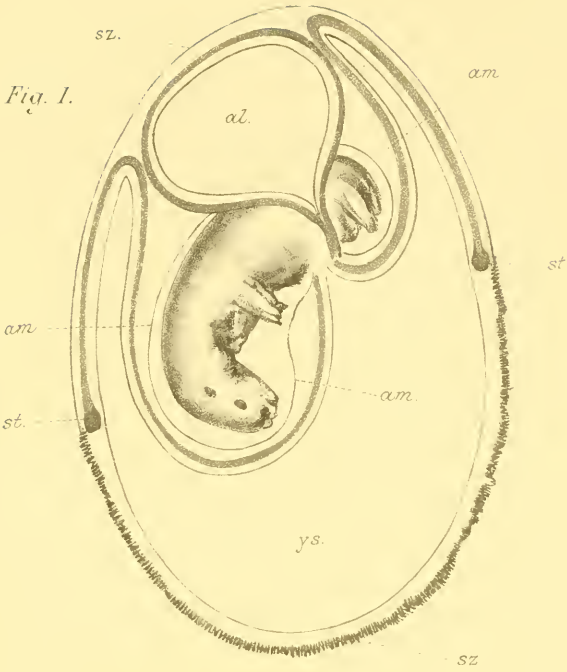


Fig. 13.







A.

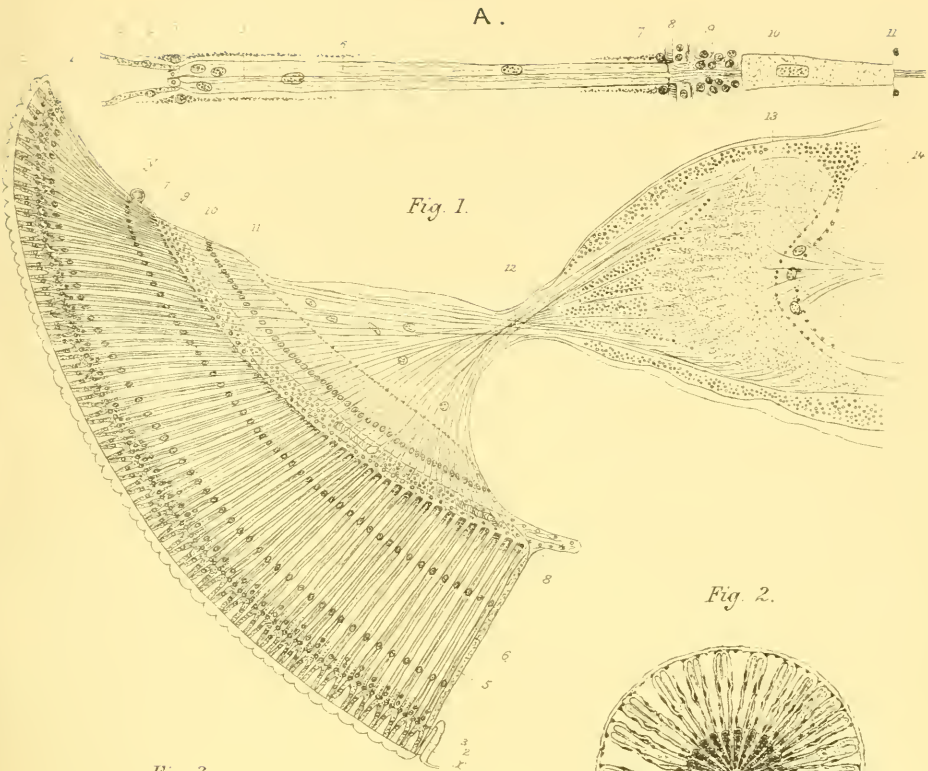


Fig. 1.

Fig. 2.

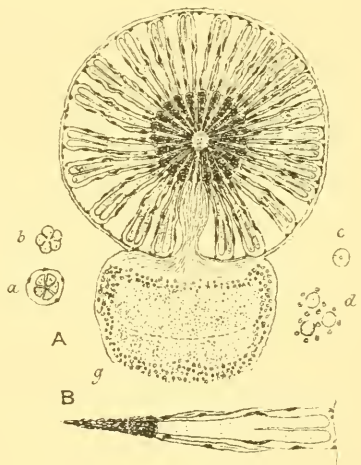


Fig. 3.

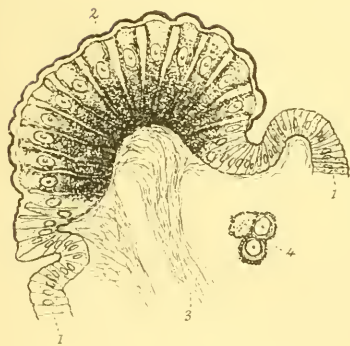
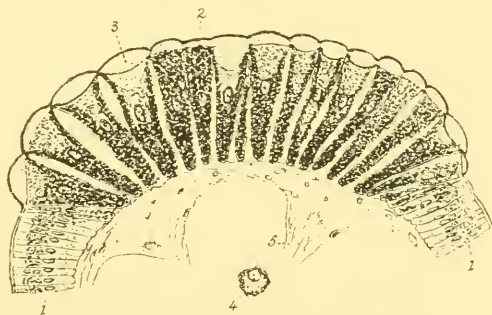


Fig. 4.





3 2044 106 275 498

Date Due

~~DEC 1973~~

