

Historic, Archive Document

Do not assume content reflects current scientific knowledge, policies, or practices.

16209
1911
Handbook and Price List

Department of Agriculture
Washington, D. C.
Rare and Interesting Plants

Giving Habits of Growth, Height, Color of Flower, and Their
Use in the Landscape

Over

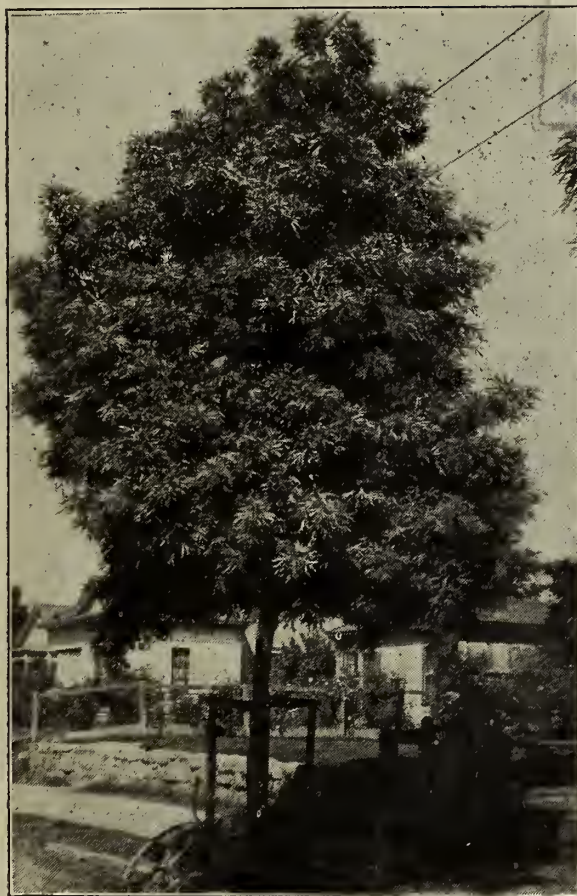
Eight

Hundred

Species

Accurately

Described



Useful and

Reliable

Knowledge

for the

Intending

Planter

Lyonothamnus Floribundus Asplenifolius
The Ironwood of Santa Cruz Island

SENT OUT BY THE

111
Southern California

Acclimatizing Association

ESTABLISHED 1893

Box 1533, SANTA BARBARA, CALIFORNIA, U. S. A.

Lyonothamnus Floribundus Var. *Asplenifolius*.

ISLAND IRONWOOD.

In describing this beautiful tree, we can do no better than to quote from "Studies in Ornamental Trees and Shrubs" by Prof. Hall of Berkeley, who writes in part:

"Another tree of this same generation is growing vigorously on the University campus at Berkeley, and now, at 15 years of age, is in bloom for the first time. It measures 45 feet high, and has a trunk diameter of 10 inches. Because of its BEAUTY AND SYMMETRY, as well as its botanical interest, it is justly considered the PRIDE OF THE GARDEN."

"The ornamental uses which can be made of this tree are numerous. It harmonizes well with almost any combination of surroundings, but is not adapted to small grounds. THE TALL STATELY HABIT ADDS DIGNITY TO ANY ENVIRONMENT, while the dense and gracefully drooping foliage forbids any suggestion of rigidity or coldness, and when covered with the copious white bloom the tree is certainly a pleasing sight. As a specimen tree for large grounds, parks, and the like it is unexcelled, particularly if plenty of room is given it, in order that there may be a symmetrical development and that the general outline may be brought out.

"LYONOTHAMNUS IS ESPECIALLY RECOMMENDED AS AN AVENUE TREE. The erect habit of growth, moderate spread, and narrow crown, would combine with the graceful foliage in making an avenue of these trees one of the most dignified and pleasing drives in the state. It is hoped that the supply will soon be sufficiently adequate to warrant their utilization for this purpose."

"Objection has been made to it as a lawn tree because of the litter produced, but healthy trees cast no appreciable amount of litter. When grown on lawns, the ground directly under the tree should be cultivated. The only further objection that I have heard is that it harbors black scale; this reason being given for its scarcity at Los Angeles. This objection, however, is not a serious one, since black scale is now readily held in check by certain animal parasites. Trees at Santa Barbara and at Berkeley are not infected with scale to any noticeable extent.

"Concerning the conditions under which *Lyonothamnus* may be expected to thrive, we can say that, so far as tried, THERE HAVE BEEN NO FAILURES. These trials have been mostly in the coast districts. The interior may be too dry for its best development, but this point has not yet been tested. Perhaps the best specimen in cultivation is the one on the Reed grounds at Pasadena, where the summers are quite warm and dry. Its hardiness is likewise unknown, but temperature of 25 degrees F. have not affected the foliage whatever."

We have succeeded in raising a splendid lot of these trees which we believe to be (with the exception of such as we have furnished other nurserymen) the only stock now offered. The trees are about two years old. Some are left in 4-inch pots, are about 18 inches tall, and sell for 75 cents; others more vigorous are in 5-inch pots, about 2 feet tall, and sell for \$1.00, while the healthiest and quickest growing have been transferred to 5-gallon cans, are nearly 3 feet tall and sell for \$2.00.

WITH THE KEY

This Handbook Will Be Found

Simple---Compact---Helpful

WITHOUT THE KEY

Its Usefulness CANNOT Be Appreciated

THE KEY

IS ON THE OTHER SIDE OF THIS PAGE

TURN IT OVER

KEY TO LETTERS AND FIGURES AS USED IN PRICE LIST

COLUMN I.

- D—Indicates that plants are deciduous; drop their leaves in the fall.
- *—Indicates that plants were first offered in Southern California by this firm.
- x—Indicates that plants require warmer situation than the orange.
- !—Indicates that plants are rare or scarce; often that we have the only stock on the coast.

COLUMN II.

The botanical names alphabetically arranged. Where possible we use the names as given in Bailey's Encyclopedia, the reference book most generally used in the United States.

COLUMN III.—Height.

Gives the height to which we know the plant to have grown; by judicious culture and pruning they can always be kept lower, often grown taller.

COLUMN IV.—Character.

- | | |
|-----------------------------|--|
| T—Tree | } This column is inserted to facilitate the selection of plants according to their habits of growth. If you are looking for trees run your finger along this column for T's; if for shrubs look for S's, and so on. Sometimes you will find two habits of growth indicated, which will mean that the plant can be made to assume either. Several, when allowed plenty of room will branch into a tall shrub, while if crowded and pruned will develop into a small tree. Some vines when left without support will form a pretty shrub, in which case we give Cl. and S. |
| S—Shrub | |
| Cl—Climber | |
| Cr—Creeper | |
| B—Bamboo or grass | |
| P—Palm | |
| F—Fern | |
| H—Herbaceous, or bulb | } Cl. and S. |
| L—Foliage plant | |

COLUMN V.—Color.

- | | |
|----------------------------|---|
| I—White | } For use in selection of plants according to color. In nearly all cases the color of the flowers is referred to, but sometimes that of the foliage. If no figures are given plant is cultivated for other considerations than color. |
| II—Pink and shades | |
| III—Red and shades | |
| IV—Yellow and shades | |
| V—Blue and shades | |
| VI—Lavender | |
| VII—Orange | |

COLUMN VI.—Useful for:

- | | |
|-------------------------------|--|
| 0—Economic purposes | } We expect this column to be of great help to our customers in making their selections. If you wish tropical fruits, look for the figure 1; if you have a place near the beach, look for 5; for tropical effect find 2; if plants cannot be given much attention after they are started, look for figure 6 in this column. In most cases several figures will be found referring to one plant, indicating its usefulness for either purpose. If 9 and 10 are mentioned, plant is particularly useful for sunny or shady situations. If 12 and 14 are indicated this may mean either shrubbery or flower beds or borders (See habit of growth column). All plants listed are ornamental, either for foliage or flower, but those indicated by the respective figures are particularly useful for the reason given. |
| 1—Edible fruits | |
| 2—Tropical appearance | |
| 3—Hedges | |
| 4—Dry places | |
| 5—Seacoast | |
| 6—Requiring little care | |
| 7—Streets and avenues | |
| 8—House plants | |
| 9—Sunny places | |
| 10—Shady places | |
| 11—Fragrance | |
| 12—Borders | |
| 13—Specimen planting | |
| 14—Bedding | |
| 15—Wild gardens | |

COLUMN VII.

Indicates whether plants are in pots, tubs, boxes, cans, or balled from the ground or sacked.

COLUMNS VIII—XIII.

Give prices for plants in different sizes.

A high price in proportion to the height of the plant is explained either by its scarcity or by its development in breadth as well as in height. For certain species no price is given, because we are temporarily out of stock, or stock on hand is not of salable size.

Introduction

THE SOUTHERN CALIFORNIA ACCLIMATIZING ASSOCIATION was established in 1893 with headquarters in Montecito and began in a small way the work of introducing and acclimatizing beautiful and useful plants from all parts of the world. Later its principal place of business was moved to Santa Barbara, and in 1907 the concern was incorporated and a considerable extension of business inaugurated.

Though at present a great many useful and ornamental plants are growing in many gardens, the descendants of those brought in by the S. C. A. A., still up to 1907 the work was carried on with considerable difficulty, since it was well nigh impossible to finance what was to all intents and purposes a botanical and experimental garden on the meager receipts realized from sales. As a direct result of this condition, of nearly one-half the varieties offered in 1900, hardly a specimen can be found growing today.

Since 1907, however, the annual volume of business has increased tenfold, and with larger receipts the stock of plants and facilities for growing and distributing have improved accordingly.

Our nurseries now contain nearly 100,000 plants of about 1000 varieties; at least 500 of these are not generally offered for sale.

In the botanical garden are growing over 500 specimens of rare plants in a splendid state of cultivation, and no new introduction, if worthy, is allowed to be lost, as one or two specimens from which to grow new stock are always jealously kept and cared for.

Of such plants for which a great demand can reasonably be expected, a large stock is on hand, while of the rarer and lesser known varieties, healthy and robust little specimens can be furnished with no more danger in transporting and transplanting than if ordinary nursery stock. Plants that appear weak or too young are not sent out.

LANDSCAPE GARDENING.

With the object of extending the care that has been given the plants in their earlier stages of growth also to their future development and proper placing in the landscape, a landscape department has been added to the business and, while the efforts in this direction have so far been largely confined to Santa Barbara and vicinity, the results have proven satisfactory to such a degree as to prove the services of this department acceptable also in a larger field. Consultation by mail or in person with prospective clients anywhere in California has been made possible, and literature on the subject is sent upon request.

I.	II. BOTANICAL NAME.	III. Height	IV. Char.	V. Color	VI. Useful for	VII. What in	VIII. Small	IX. 1-2 ft.	X. 2-3 ft.	XI. 3-4 ft.	XII. 4-6 ft.	XIII. 6-8 ft.
	ABELIA GRANDIFLORA China—Almost everblooming	10	S.	II	3.13.14.	pot can ball	.25	.50		1.00		
!TRIFLORA Himalaya—Very scarce	8	S.	I	13.14	pot		.50			.75	
!	ABERIA CAFFRA S. Africa—Kai-apple, fruit like a yellow plum	10	S.		1.3.4.13	pot can ball		.35		1.00	.75	
!	ABROMA AUGUSTA Trop. Asia—A recent introduction	30	T.	III	8.13	pot		1.00				
!	ABUTILON MEGAPOTAMICUM Trop. America—Strik'ng'y handsome	6	S.	III	3.14	pot can	.25		1.00			
SOUVE. DE BONN Leaves beautifully edged white	10	L	II	3.13.14	pot can		.25				
YELLOW Large bell shaped flower	10	S.	IV	3.14	pot can	.25					
PINK A very delicate color.	10	S.	II	3.14	pot can			.35			
BROWN Flowering Maple	10	S.	III	3.14	pot can						
!	ACACIA ACCOLA Very dense flowerspikes. All Acacias from Australia except where noted	20	T.S	IV	4.6.9	pot	.25					
*!ACINACIA The best small acacia	10	S.	IV	3.4.6.13	pot	.25					
*!ANEURA A new shrub	12	S.	IV	3.4.6	pot	.25					
ARMATA Kangaroo Thorn, fine for hedges	10	S.	IV	3.4.5.6	pot	.25					
BAILEYANA The best tall shrub	20	S.T	IV	4.6.9.13	pot can	.25		.35	1.50		
*CAVENIA Chile—Fine for hedges	15	S.	IV	3.4.6	pot						
CORYMBOSA The quickest grower	15	S.T	IV	3.4.6	pot		.25				
*CULTRIFORMIS A blaze of color when in bloom.	10	S.	IV	3.4.6.9	pot		.25	.35			
CYANOPHYLLA The blue leaved Wattle	18	S.T	IV	4.6.14	pot		.25	.35	.50		
DEALBATA Silver Wattle, gray-green	100	T.	IV	0.6.7.11	pot can			.25	.35		
DECURRENS Green Wattle, the best tree	100	T.	IV	0.4.6.7	pot can		.25				
*!DIETRICHIANA Newly introduced					pot	.50					
!ELATA Peppertree Wattle, fine street tree.	20	T.	IV	4.6.7.13	pot	.25					
*!ELONGATA ANGUSTIFOLIA For damp situations	6	S.	IV	3.14	pot	.25					
*!EXTENSA Hair like foliage, drooping, splendid.	15	S.	IV	4.6.13.14	pot	.25			1.00		
FARNESIANA Mex.—Popinac, grown for perfumery.	15	S.	IV	4.3.5.11	pot		.25				
*!FLEXICAULIS A recent acquisition					pot	.25					
FLORIBUNDA Ever blooming, the most generally useful.	25	T.S	IV	3.6.7.11	pot can		.25	.35	.50		.75
LATIFOLIA The best kind for sea shore planting.	30	T.S	IV	3.4.5.7	pot can		.25		.50		.75
!LEPTOCLADA Lately introduced					pot	.25					
MELANOXYLON Australian Blackwood, fine timber	100	T.	IV	0.7	pot can			.25	.35	.50	.75
MOLLISSIMA Black Wattle	100	T.	IV	0.6.7	pot		.25				
!NOTABILE A new one			IV		pot	.25					
*!OBLIQUA Splendid small shrub	8	S.	IV	3.4.6	pot		.50				
!PENDULA Weeping Myall, grey foliage	30	T.	IV	4.6.13	pot	.50					

I.	II. BOTANICAL NAME.	III. Height	IV. Char.	V. Color	VI. Useful for	VII. What in	VIII. Small	IX. 1-2ft.	X. 2-3 ft.	XI. 3-4 ft.	XII. 4-6 ft.	XII. 6-8 ft.
*	PENNINERVIS Gracefully drooping	40	T.	IV	4.6.13	pot						
*!	PODALIRIAEFOLIA Better than Baileyana, very scarce	20	S.T	IV	4.6.13	pot	.50					
!	PRAVISSIMA The best of all	40	T.S	IV	4.6.13	pot	.35		.75			
	PYCNANTHA The Golden Wattle	30	T.S	IV	4.5.6.13	pot	.25					
	RETINODES The Same as A.Floribunda	25	T.S	IV	3.4.6.7	pot can		.25	.35	.50		.75
	SALIGNA Large heads of flowers	20	T.S	IV	4.6	pot						
!	STRICTA Very dwarf	2	S.	IV	4.6	pot	.25					
*!	SUAVEOLENS Very free flowering	12	S.	IX	4.6.13.14	pot	.25					
!	SUBULATA A new one	4	S.	IV	4.6	pot	.25					
	VERTICILLATA Needle like foliage, a profuse bloomer	15	T.S	IV	4.6.9	pot can			.25	.35	.50	
x	ACALYPHA MACAFEANA S. Sea Islands—A mass of color	4	L.	III	2.8.14	pot	.10	.50				1.00
x	MARGINATA Foliage splendidly colored	6	L.	III	2.8.14	pot		.50				
	ACANTHUS MOLLIS The classical acanthus leaf	4	L.	I	2.10.14	pot sack		.25	.25			
!x	MONTANUS W. Africa. A grand plant	6	L.		8.13	pot		1.00				
	SPINOSUS Fine for sub-tropical effect	6	L.	I	2.10.14	pot sack		.35	.25			
	ACHANIA MALVAVICUM Turk's cap. Bright scarlet	12	S.	III	3.6.14	pot can		.25	.35			
	ACHYRANTES ACUMINATUM Red foliage, a mass of color	10	L.	III	2.3.12.14	pot	.10					
!	ACOKANTHERA SPECTABILIS Natal—Strong, delicious fragrance	10	S.	I	4.11.13.14	pot ball	.50		.75			
!d	ACTINIDIA CHINENSIS E. Asia. A very rapid grower	15	Cl.	I	1	pot		.50				
!	ADENANTHERA PAVONINA Trop. Asia. Red Sandalwood tree	40	T.		2.7.13	pot	.50					
	ADENANDRA FRAGRANS Cape. Breath of heaven	10	S.	I	3.11.14	pot can	.25	.50		1.00		
!	ADENOCARPUS HISPANICUS Spain. Effective in shrubby beds	6	S.	IV	3.4.6.14	pot		.50				
!	COMMUTATIS Orient. Beautiful broom-like shrub	6	S.	IV	3.4.6.14	pot		.50				
!x	ADHATODA HYDRANGEOIDES Brazil. A splendid shrub	8	S.Cl.	II	2.8.13	pot		.50				
	ADIANTUM CUNEATUM Maidenhair fern	2	F.		8	pot		.50				
!x	AESCHYNANTHUS GRANDIFLORA Trop. Asia. Showy and interesting	5	ClCr	III	2.8	pot	.50					
	AGAPANTHUS UMBELLATUS African Lily. Fine for cut flowers	4	H.	V	12.14	ball		.50				
	fol. var. Splendid for the border	3	L.	I	8.12	ball	.25					
	AGATHAEA COELESTIS S. Africa. Blue daisy	2	H.	V	12.14.15	pot		.25				
*!	AGATHIS ORIENTALIS Malay Arch. A majestic tree	120	T.		7.13	pot	.75	1.00				
*!	AGAVE ATTENUATA Mexico. Graygreen, makes quite a trunk	12	L.		2.13	pot	.50					
	CANDELABRUM Long bluish leaves	6	L.		2.13	pot	.25					
*	MACRANTHA Mexico. Very large flowers	6	L.		2.13	pot	.25					
*	MITIS Light green, flat leaves	5	L.		2.13	pot	.50					

I.	II. BOTANICAL NAME.	III. Hight	IV. Char.	V. Color	VI. Useful for	VII. What in	VIII. Small	IX. 1-2 ft.	X. 2-3 ft.	XI. 3-4 ft.	XII. 4-6 ft.	XIII. 6-8 ft.
 RIGIDA SISILANA	6	L.		0.2.3.13	pot	.25					
	Yucatan. S.sal hemp					ball						
 VICTORIAE REGINAE	3	L.		2.13	pot	.50					
	Leaves triangular, striped white.....											
!x	ALEURITES CORDATA	20	T.		0.2.7.13	pot	.50					
	S. China. A beautiful tree.....											
!x	ALLAMANDA CATHARTICA	10	Cl.	IV	8.10.14	pot	.35					
	S. America. Of easiest culture.....											
!x HENDERSONI	10	Cl.	IV	2.8	pot		.50				
	Guiana. Flowers very large.....											
!x WILLIAMI	6	S.	IV	2.8.11	pot		.50				
	Flowers in numerous clusters											
	ALLIUM NEAPOLITANICUM	1	H.	I	12.14	bulb		.02				
	Fine for cut flowers.....											
!x	ALPINIA NUTANS	8	L.	I	2.13	pot		.50				
	E. Ind'a. Shell flower, striking plant.....					can			1.00			
x	ALSOPHILA AUSTRALIS	15	F.		2.8.10.13	pot		.75				
	Australian tree fern					can						
x!	ALSTONIA SCHOLARIS	30	T.	I	0.2.7.13	pot		.75				
	India. The Devil tree.....					can						
	ALTERNANTHERA PARONYNCHOIDES	1	H.	IV	12.14	flat	.01					
	Showy border plant					pot	.05					
	ALTHAEA ROSEA	10	H.	I	3.12.14	pot	.10					
	Hollyhock					sack		.25				
	AMARYLLIS BELLADONNA	4	H.	II	6.12.14	bulb	.25					
	Known for its large flowers.....											
x!	AMOMUM CARDAMON	8	L.		8.10.13	pot	.25	.50				
	E. India Cardomon. For sub-tropical effect..											
d	AMPELOPSIS TRICUSPIDATA	50	Cl.			pot		.25				
	China. Boston Ivy					sack	.15					
	ANDROMEDA CATESBAEI	6	S.	III	6.10.14	pot		.50				
	Georgia. Beautiful leucothoe foliage.....											
!	ANEMOPAEGMA PURPUREA	15	Cl.	III		pot	.35		1.00			
	Curious flowers changing from yellow to red.											
*!	ANISACANTHUS WRIGHTII	6	S.	III	6.14.15	pot		.50				
	Texas. A very good shrub.....											
	ANONA CHERIMOLIA	20	S.T		1.2.11	pot	.25	.50				
	Peru. The well known custard apple.....					can				1.25		
	ANTHERICUM VITTATUM VAR.....	1	L.	I	6.8.12	pot	.25			1.00		
	Much used for hanging baskets.....					ball	.50					
*!	ANTHYLLIS BARBA JOVIS	10	S.	I	3.5.6.14	pot		.50				
	S. Europe. Jupiter's beard. Clover tree...					can					1.50	
d	ANTIGONON LEPTOTUS	20	Cl.	II	2	pot	.25					
	Mex.—Rosa de Montana Beautiful.....											
x!	APHANANTHE ASPERA	20	T.	I	7.13	ball		.50				
	Japan. A very rare species.....											
x	ARALIA PAPYRIFERA	15	L.	I	2.6.13	pot	.25					
	Japanese paper plant					can			1.00			
	ARAUCARIA BIDWELLI	80	T.		7.13	pot		.75				
	Australia. The monkey puzzle					box				4.00	6.00	
 EXCELSA	150	T.		2.7.13	pot	.50					
	Norfolk Island Pine					box		2.50	4.00	6.00		
	ARBUTUS MENZIESI	100	T.S	I	6.7.15	pot	.25					
	California Madrone											
 UNEDO	20	T.S	I	4.6.13.15	pot	.25					
	S. Europe. Strawberry tree					can					1.50	
!	ARDISIA CRENULATA	8	S.	II	2.11.13	pot	.25					
	E. India. Splendid when in fruit.....											
x	ARECA SAPIDA	15	P.		2.8.13	pot		.50				
	A striking palm					can			3.00	4.00		
	ARGEMONE MEXICANA	4	H.	I	15	pot			2.50	3.50		
	A small Matilijah poppy											
!	ARISTOLOCHIA ELEGANS	15	Cl.	IV	13	pot	.25					
	Brazil. A graceful free blooming species....											
! TRIANGULARIS	20	Cl.		13	pot			1.00			
	S. America. Very rare											
!	ARTEMISIA ARBORESCENS	6	S.	I	5.15	pot		.50				
	Algeria. A splendid grey-leaved plant.....											

ALSTONIA, ALPINIA and AMOMUM are rare and good.

Southern California Acclimatizing Association's Catalogue for 1911.

I.	II. BOTANICAL NAME.	III. Height	IV. Char.	V. Color	VI Useful for	VII. What in	VIII. Small	IX. 1-2ft.	X. 2-3 ft.	XI. 3-4 ft.	XII. 4-6 ft.	XII. 6-8 ft.
!	ARUNDINARIA FALCATA	15	B.		2.3.13	pot			.75			
	Himalaya. Feathery non-spreading.											
*x!HOOKERIANA	25	B.		2.3.13	pot						
	Himalaya. Non-spreading upright grown....					ball				2.50		
JAPONICA	12	B.		2.3	sack					1.00	
	Bold broad foliage					ball					1.25	
SIMONI	20	B.		2.13	ball				3.50		
	Graceful drooping variegated.....											
	ARUNDO DONAX VAR.	18	L.	I	2.3.6.13	sack			.25			
	Orient. Giant reed											
	ASPARAGUS COMORENSIS	30	Cl.		2.10	ball		.50				
	Very rapid grower.....											
PLUMOSUS	40	Cl.		2.8	pot		.25				
	S. Africa. Asparagus fern.....					ball			.50			
SPRENGERI	20	ClCr	I	4.6.8.10	pot		.25				
	Natal. Splendid for hanging basket.....					bask			1.50	2.50		
	ASPIDISTRA LURIDA	5	L.		2.8.10	pot		1.50				
	China. One of the best house plants.....					tub			5.00			
	ASTER	2	H.	all	14	flat	.02					
	The well known bedding plant.....											
	ASYSTASIA BELLA	10	S.	VI	3.10.14	pot		.50				
	S. Africa. Very pretty					can				1.00		
*	ATRIPLEX BREWERI	12	S.		3.4.5	pot	.25					
	Cal. Salt bush. Grey foliage, quick grower..					flat	.10					
	AUCUBA JAPONICA	8	S.		8.10	pot		.75				
	Japan. The gold dust plant.....											
	AZARA MICROPHYLLA	20	S.Cl.		13.15	pot		.50				
	Chile. Graceful small glossy foilage.....					can						
	BAMBUSA VULGARIS	60	B.		2.13	pot	.50					
	India. The arching giant bamboo.....					sack			3.00			
!	BARBEYA OLEOIDES					pot	.50					\$25
	A new introduction											
!	BASANACANTHA SPINOSA					pot	1.00					
*!x	BAUHINIA VARIEGATA	20	T.S	III	2.13	pot		1.00				
	India. Large orchard like flowers.....											
*!CANDICANS	8	S.	I	2.13	can						
	Argentine. Quick grower											
*!FORFICATA	8	S.	III	2.13	can						
	Brazil. Very rare											
*!dGRANDIFLORA	20	T.	I	2.7.13	pot	.25	.50				
	Peru. Flower 5 inches					can			1.50			
*!xTOMENTOSA	8	S.	IV	2.13	pot		1.00				
	India. St. Thomas flower											
PURPUREA	20	S.T	III	2.13	pot			.50			
	India. Very curious flower					can				1.25		
	BEAUCARNIA RECURVATA	8	L.		2.13	pot	1.00					
	Mex. Gracefully recured leaves											
	BEGONIA ALBO-MARMORATA	4	H.L		8.10	pot	.25					
	Fine for pots and rockeries.....											
DIGSWELLIANA	2	H.	II	8.10	pot	.25					
ERFORDI	1	H.	II	9.12.14	pot	.25					
	Everblooming					flat	.10					
FLORIBUNDA	6	H.	II	8.10.14	pot	.25					
	Very satisfactory											
FUCHSIOIDES	8	H.	III	8.10.14	pot	.25	.35				
	Very graceful species											
ODORATA ALBA	6	H.	II	8.10.11	pot	.25					
	Grows to immense bushes.....											
ROSEA	6	H.	III	8.10.11	pot	.25					
	A very deep pink											
REX	3	L.		8.10	pot	.25	.50				
	Large metallic leaves											
RUBELLI	5	H.L		8.10	pot		.50				
	Robust grower, covered with reddish hairs..											
RUBRA	10	H.	III	8.10	pot		.50				
	Tree Begonia					tub			1.00			
SEMPERFLORENS PINK	2	H.	II	12.14	pot	.25					
	The best bedder					flat	.10					

ATRIPLEX BREWERI—best hedge on seashore.

I.	II. BOTANICAL NAME.	III. Height	IV. Char.	V. Color	VI. Useful for	VII. What in	VIII. Small	IX. 1-2 ft.	X. 2-3 ft.	XI. 3-4 ft.	XII. 4-6 ft.	XIII. 6-8 ft.
SEMPERFLORENS RED	2	H.	III	12.14	pot	.25					
	A deeper color					flat	.10					
VESUVE	2	H.	III	14	pot	.25					
	The only real red											
WELTONIENSIS	4	H.	II	8.10	pot	.25					
	Neat appearing little plant											
	BERBERIS AQUIFOLIUM	6	S.	IV	3.10.13.14	pot		.35				
	Oregon grape, handsome evergreen											
DARWINI	4	S.	IV	3.10.13.14	pot		.35				
	Chili. Exceedingly pretty					can			1.00			
ILICIFOLIA	6	S.	IV	3.10.13.14	pot		.50				
	Terra del Fuego. Holly leaved											
*!	BIGNONIA BUCCINATORIA	60	Cl.	III		pot		.50				
	Mex. Strong grower and good color											
*SPECIOSA	20	Cl.	V		pot		.35				
	Argentine. Handsome mauve flowers					can						
*!PURPUREA	20	Cl.	III		pot	.35		1.00			
	Argentine. Clings to walls like Boston ivy..											
TWEEDIANA	80	Cl.	IV		pot	.25					
	Argentine. Readily clings to walls.....					bal			.75			
VENUSTA	40	Cl.	VII		pot	.25	.35				
	Brazil. A profuse winter bloomer.....					can						
*!	BOCCONIA FRUTESCENS	12	L.		2.9.13	pot	.25					
	West Indies. Very striking					can						
!	BOEHMERIA RUGULOSA	10	S.		2.9	pot			.50			
	A strong grower											
	BOUGAINVILLEA BRAZILIENSIS	20	Cl	III	2	pot	.35					
	Magenta, bright enough to be good.....					can						
!GLABRA W. K. HARRIS.....	15	Cl.L	III	2	pot	.35					
	Foliage prettily variegated											
!xLATERITIA	30	Cl.	II	2	pot			3.00			
	The brick red one, very scarce											
	BRACHYCOME IBERIDIFOLIA	2	Cr.	I	12.14	pot	.10					
	S. Africa. Swan river daisy					flat	.02					
*!	BRACHYCHITON DISCOLOR	20	T.		7.13	pot		.50				
	Austr. Beautiful dark, maple-like foliage..											
ACERIFOLIA	20	T.	III	7.13	pot		.35	.50			
	Austr. The flame tree, a mass of flowers....					can						
*!x	BRUCEA SUMATRANA					pot	1.00				1.00	
	A recent acquisition											
	BUDLEYA GLOBOSA	8	S.	IV	3.4.14	pot	.25					
	Chil. Graceful and distinct					can			.75			
*MADAGASCARIENSIS	30	Cl.S	IV	2.6.15	pot		.25				
	A strong grower with silvery foliage.....					can						
*VARIABILIS	10	S.	VI	6.15	pot		.25				
	China. A graceful shrub					can			1.00			
	BUXUS SEMPERVIRENS	3	S.		3.12	pot	.05					
	A favorite for formal gardens.....					flat	.03					
 var.....	6	S.	I	3.12.13	ball	.10					
						pot			.50			
						ball					5.00	
						box						
*!x	CAESALPINIA ECHINATA	20	T.S	IV	0.6.7	pot		.50				
	Clusters of pods prettily colored					ball					1.00	
						can					1.25	
	CALADIUM ESCULENTUM	6	L.		2.13.14	pot		.25				
	Hawai. Elephants ear					sack	.20					
!	CALCEOLAREA INTEGRIFOLIA	3	S.	IV	12.14	pot		.25				
	Chil. A shrubby, free flowering kind.....											
*!	CALLIANDRA PORTORICENSIS	15	T.S	I	2.6.13	pot			.75			
	W. Indies. Flowers large balls of stamens...											
	CALLISTEMON RIGIDUS	8	S.	III	4.5.6	pot						
	N. S. Wales. Bottle brushes					can			.75			
*!	CALOTHAMNUS QDADRIFIDUS	8	S.	III	4.6.13	pot	.35	.50				
	W. Austr. Like dwarf pine, bright flowers..											
	CAMELLIA JAPONICA	12	S.	I	8.10	pot			1.50			
	The old favorite—red or white.....											
!	CAMPANULA GARGANICA	½	Cr.	V	12.14	pot	.25					
	S. Italy. A little gem.....											
GARDEN VARIETIES	4	H.	V.I	12.14	ball	.25					
	Canterbury bells, etc.											

I.	II. BOTANICAL NAME.	III. Height	IV. Char.	V. Color	VI. Useful for	VII. What in	VIII. Small	IX. 1-2ft.	X. 2-3 ft.	XI. 3-4 ft.	XII. 4-6 ft.	XIII. 6-8 ft.
	CAMPHORA OFFICINALIS	80	T.		7.13	pot		.25				
	China—Camphor tree					can				1.00	1.25	1.50
!	CANTUA BUXIFOLIA	10	S.	III	2.13	ball		.50		.75	1.00	
	Peru—A gorgeous shrub					pot			1.50			
*	CAPPARIS SPINOSA	2	Cr.	I	0.4.9	can		.25				
	Mediterr. The Caperbush, large flowers.....					pot						
*	CARDIOSPERMUM HIRSUTUM	10	Cl.	I		pot		.25				
	Trop.Am. Balloon vine, rapid grower.....											
!x	CARICA PAPAYA	15	S.T		0.1.2.13	pot	.25	.50				
	Trop. Am. Melon Pawpaw											
*!xQUERCIFOLIA	20	T.S		1.2.13	pot	.25		.75			
	Paraguay. Fine for the sub-tropical garden..											
!	CARISSA GRANDIFLORA	6	S.	I	1.13.14	pot		.50				
	Natal plum, very ornamental											
	CARNATION CORONA			III		pot	.10					
ENCHANTRESS			II		pot	.10					
FAIR MAID			II		pot	.10					
HARLOWARDEN			III		pot	.10					
JOOST			II		pot	.10					
MARIAN			I		pot	.10					
MERMAID			I		pot	.10					
PROSPERITY			I		pot	.10					
LORD			II		pot	.10					
	Any of the above from the field.....					cl'p		.25				
*!	CASIMIROA EDULIS	20	T.		1.2	pot		.50				
	Zapote, Mexican Peach					can				1.00		
*	CASSIA ARTEMISIOIDES	8	S.	IV	3.4	pot	.25					
	'Austr. Graceful shrub											
x*!FISTULA	10	S.	IV	0.2	pot	1.00					
	India. Pudding pipe tree											
d*!xGRANDIS	30	T.	IV	0.2.13	pot		1.00				
	A splendid tropical tree											
*!xNODOSA	10	S.	II	0.2.13	pot	1.00					
	India. One of the most gorgeous.....											
!LEPTOCARPA	8	S.	IV	3.6.14	pot	.25					
	Ariz. Very good											
*!PILIFERA	15	S.	IV	3.6.14	pot	.50					
	Paraguay. Floriferous and compact											
*!SPLENDENS	10	S.	IV	3.6.14	pot	.25					
	A blaze of yellow											
TOMENTOSA	8	S.	IV	3.4.6.14	pot		.25				
	Mex. A quick grower											
!	CASTANOSPERMUM AUSTRALE	25	T.	III	2.7.13	pot		1.00				
	Moreton Bay chestnut, a splendid tree.....											
!	CASUARINA GLAUCA	40	T.		0.5.7	pot	.25					
	Austr. Recent introduction											
QUADRIVALVIS	50	T.		0.5.6.13	pot	.25					
	Austr. Beefwood, a drooping tree.....					can						1.00
STRICTA	50	T.		0.5.7	pot		.25				
	Erect habit, graceful tree.....					ball				.75		
can					can						1.00
*!	CEANOTHUS ARBOREUS	20	S.		4.6.15	pot	.25					
	Santa Cruz Isl. Very rare.....											
*CUNEATUS	15	S.	I	3.4.15	pot	.25	.35				
	California mountain lilac											
*SPINOSUS	15	S.	V	3.4.15	pot		.35				
	California pale blue mountain lilac.....											
THYRSIFLORUS	15	S.	V	3.4.15	pot	.15	.25				
	Northern deepblue Mountain Lilac.....					can				1.00		
x*!	CECROPIA PALMATA	40	T.		2.13	pot		.50				
	S. Am.—Striking and ornamental.....											
*!d	CEDRELA FISSILIS	100	T.		0.7.13	pot		.50				
	Brazilian Cedarwood, fast grower.....					can				1.50		
d!CHINENSIS	70	T.		0.7.13	pot						
	Chinese Cedarwood. Regular; dense growth..					can						
*!dTOONA	80	T.		0.7.13	pot						
	Australian Cedarwood					can						
	CEDRUS ATLANTICA	200	T.		7.13	can						
	N. Afr.—Pyramidal form, bluish foliage.....											
DEODARA	200	T.		7.13	can						
	Himalaya—Deodar Cedar					box					5.00	

CARISSA, CASIMIROA, CEDRELA, highly recommended.

I.	II. BOTANICAL NAME.	III. Height	IV. Char.	V. Color	VI. Useful for	VII. What in	VIII. Small	IX. 1-2 ft.	X. 2-3 ft.	XI. 3-4 ft.	XII. 4-6 ft.	XIII. 6-8 ft.
LIBANI	200	T.		7.13	can						
	Cedar of Lebanon					box						
d	CELTIS CHINENSIS	50	T.		7.13	pot						
	Chinese Nettlewood											
dMISSISSIPIENSIS	50	T.		7.13	pot	.25					
	So. States—Beautiful spreading tree.....											
	CENTAUREA CINDERARIA	3	H.L	I	5.12.14	pot	.25					
	S. Italy—Dusty miller.....											
	CERASTIUM TOMENTOSUM	1	Cr.	I	12.14	pot	.25					
	Europe—Grey foliage, fine for rockeries.....					flat						
	CERATONIA SILIQUA	30	T.S		0.1.4.7	pot		.35	.50			
	Mediterr.—Carob, St. John's bread.....					can				1.25		
	CESTRUM AURANTIACUM	12	S.	VII	3.11.14	pot	.25					
	Guatemala—Yellow Lilac					can				.75		
ELEGANS	8	S.	III	3.6.14	pot				.35		
	Mexico—Bright; continuous bloomer					can					.75	
!LAURIFOLIUM	10	S.	I	3.6.13	pot	.25	.50				
	Argentina—Glossy foliage, flowers pure white					can						
NOCTURNUM	10	S.	I	3.11.14	pot	.25					
	Jamaica—Nightblooming Jessamine					can			.35			
!SALICIFOLIUM	10	S.		3.14	pot						
	A new introduction											
	CHAENOSTOMA HISPIDUM	2	H.	I	12.14.15	pot	.10					
	S. Africa—For windowboxes; everblooming..					flat	.05					
	CHAMAEROPS EXCELSA	20	P.		2.5.6.7	can						
	China—Windmill palm					ball		.50				
HUMILIS	10	P.		2.5.13	tub						
	Mediterr.—A good lawn palm.....					ball		1.00				\$10
!	CHLOROCODON WYTHEI	20	Cl.	I		pot			1.00			
	Natal—Vigorous grower, red and white.....					can						
	CHLOROPHYTUM VITTATUM VAR	1	L.	I	6.8.12	pot	.25					
	Anthericum, white striped leaves.....					sack		.50				
	CHOISYA TERNATA	10	S.	I	3.13.14	pot	.35	.50				
	Mexican Orange flower					ball			1.00			
CIBOTIUM BAROMETZ	8	F.		2.10	pot		1.00				
	China—Scythian Lamb; a splendid fern.....											
	CINERARIA HYBRIDA	3	H.	I-V	8.10.12.14	pot	.25					
	S. Africa—Popular winterbloomer											
CRUENTA ALBA	3	H.	I	8.12.14	pot	.25					
	S. Africa—The original species											
	CINNAMOMUM CAMPHORA	100	T.S		0.3.7.13	pot	.25					
	Japan—The Camphor tree.....					can				1.00	1.25	1.50
CISSUS ANTARTICA	30	Cl.		10	box						
	Austr.—Kangaroo vine					pot						
!RHOMBIFOLIUS	10	ClCr			can				1.00		
	Trinidad—Splendid for window boxes.....					pot	.35	.50				
	CISTUS CRISPUS	2	S.	II	3.6.15	pot	.25			2.50		
	S. W. Eur.—Compact, fls. 2 inches.....											
HIRSUTUS	3	S.	I	3.6.15	pot	.25					
	S.W.Eur.—Rockrose											
LADANIFERUS	4	S.	I	13	pot	.35					
	Flowers 3 inches, splendid.....											
LAURIFOLIUS	6	S.	I	3.6.15	pot	.25					
	Flowers 2½ inches; very hardy.....											
MONSPELIENSIS	5	S.	I	3.6.15	pot	.25					
	S. Europe—Flowers 1 inch.....											
VILLOSUS	5	S.	II	3.6.15	pot	.25					
	Mediterranean Rockrose											
POPULIFOLIUS	6	S.	I	3.6.15	pot	.25					
	Poplarleaved Rockrose											
SALVIFOLIUS	2	S.	I	3.6.15	pot	.25					
	Sageleaved Rockrose											
*!	CITHAREXYLON BARBINERVE	15	S.	IV	0.13	pot	.25					
	Argentina—Fiddlewood											
*!ILICIFOLIUM	15	S.	I	0.13	pot	.50					
	Ecuador—Hollyleaved											
d	CLEMATIS MONTANA	30	Cl.	I		pot		.50				
	Fast grower with large flowers in profusion..					can				1.00		

Don't overlook CESTRUM, CHAENOSTOMA, CISSUS and CISTUS.

I.	II. BOTANICAL NAME.	III. Height	IV. Char.	V. Color	VI. Useful for	VII. What in	VIII. Small	IX. 1-2ft.	X. 2-3 ft.	XI. 3-4 ft.	XII. 4-6 ft	XIII. 6-8 ft.
dPANICULATA	20	Cl.	I	11	pot			.35			
	Japan—Fallbloomer; fast grower											
x	CLERODENDRON THOMPSONI	10	Cl.	I	2.8	pot			.50			
	W. Africa—Calyx white corolla red.....											
*!FALLAX	10	S.	III	2.10.13	pot		.50				
	Java—Tallgrowing; tropical appearance.....											
FRAGRANS	5	S.	I	2.10.11	pot		.50				
	Sweetscented; splendid foliage					can			1.00			
*!TOMENTOSUM.....	5	S.	II	2.10.1	pot		.50				
	E. Austr.—Leaves velvety, flo'rs large corymbs											
	CLIANTHUS DAMPIERI	6	Cl.	III	2	pot	.25					
	Austr.—Glorypea, gorgeous											
PUNICEUS	10	S.Cl.	III	2	pot	.25	.50				
	New Zealand—Glorypea, splend'id.....											
*	CLITORIA TERNATEA	15	Cl.	V	3	pot	.50					
	Moluccas—Butterfly pea, sky-blue											
*	COCOS ERIOSPATHA	20	P.		1.2.13	pot	.25					
	S. Brazil—Quite hardy, blue-green					can			3.00			
FLEXUOSA	60	P.		2.7.13	pot		.50				
	Cent. Brazil—Hardier than Plumosa.....					box						
PLUMOSA	60	P.		2.7.13	pot	.25	.50				
	Brazil—The favorite avenue palm.....					ball		1.00	2.00	3.00	5.00	\$15
					can				4.00	6.00	
					pot					6.00	
*!	COCCOLOBA SP.	15	T.		1.13	pot						
	Costa Rica—Fruits like Plums.....											
*!	COLEUS THYRSOIDES	4	S.	V	2.14	pot	.25		.50			
	A novelty; great racemes of blue flowers.....											
!	COLLETIA CRUCIATA	6	S.	I	13.14	pot	.50					
	Chile—Charming shrub											
!SERRATIFOLIA	6	S.	IV	13.14	pot	.50					
	Chile—A recent introduction											
!SPINOSA	6	S.		13.14	pot	.50					
	Chile—Very promis'g											
	COLOCASIA ANTIQUORUM	8	L.		2.12.14	pot		.50				
	var. esculentum					sack						
	India—Elephants ear25					
*!	COMAROSTAPMYLIS DIVERSIFOLIA	20	T.S	III	3.5.15	pot	.50					
	Santa Cruz Isl.—A mass of red berries.....											
	CONVOLVULUS MAURETANICUS	1	Cr.	V	8.10.13	pot	.25					
	Mediterr.—For baskets and rockeries.....											
	COPROSMA BAUERI	10	S.		3.5.14	pot	.25	.50				
	N. Zealand—Shining deep green foliage.....					ball			.75			
					can			1.00			
FOL. VAR.	10	S.	I	2.10.14	pot						
	A variegated form of the above.....											
	CORDYLYNE AUSTRALIS	20	L.		2.7.13	ball		.25	.75			
	Known as Dracaena indivisa.....					can				1.00		
BROAD-LEAVED	20	L.		2.7.13	ball		.50	.75			
	More robust					can				1.00	1.50	2.50
	COREOPSIS LANCEOLATA	3	H.	IV	12.14	pot	.25					
	A favorite perennial for cut flowers.....					ball	.25					
	CORONILLA GLAUCA	8	S.	IV	3.6.15	pot		.35				
	S. Eur.—In flower the year around.....											
*VIMINALIS	5	S.Cr	II	6.14	pot		.35				
	Algeria—Trailing, for cut flowers.....											
	CORTADERIA ARGENTEA	15	B.	I	2.3.6.13	pot	.25					
	S. America—Pampas grass					sack			.50			
JUBATA	15	B.	II	2.3.6.13	pot	.25					
	Pink flowered					sack			.50			
	CORYNOCARPUS LAEVIGATUS.	20	S.T		6.13.14	pot	.50	.75				
	Austr.—Laural, Glossy foliage, compact growth					can			1.50			
	CORYPHA AUSTRALIS	25	P.		2.7.13	pot			1.00			
	Austr.—Fanpalm ((Livistona)					can						
					ball				2.50		
	COTONEASTER HORIZONTALIS	8	S.	III	6.12.15	pot		.25				
	China—Red berries, very effective.....					can						
	CRATAEGUS PYRACANTHA	10	S.	III	3.6.15	pot		.25				
	Hawthorn. Bright scarlet berries					can			1.00			
*!	CROTALARIA CAPENSIS	5	S.	IV	2.13	pot		.50				
	Recent introduction from the Cape.....											
	CRYPTOMERIA ELEGANS	20	S.	III	13.14	pot	.25					
	Japan—Bronzy brown in winter					box				1.25		

Of course you want a COCOS and a COPROSMA.

I.	II. BOTANICAL NAME.	III. Height	IV. Char.	V. Color	VI. Useful for	VII. What in	VIII. Small	IX. 1-2 ft.	X. 2-3 ft.	XI. 3-4 ft.	XII. 4-6 ft.	XIII. 6-8 ft.
JAPONICA Japanese Cedar	100	T.		0.7.13	pot can			.50		1.25	
	CUNNINGHAMIA SINENSIS Like a Norway spruce when young	80	T.		7.13	pot ball	.25					
*!	CUPANIA ANACARDIOIDES Handsome, quick grower, good fruit	30	T	I	1.2.11	pot	.50					
*!SAPIDA W. Africa—Akeetree, rich, red fruit	30	T.	I	1.2.11	pot	1.00					
	CUPHEA GNEA Mex.—Fine for hangingbaskets	5	S.	III	8.12.14	pot	.25					
MICROPETALA	3	S.	IV	8.12.14	pot	.25					
	CYPRESSUS ARIZONICA Arizona Cypress. Bluish green	70	T.		0.4.7	pot ball can	.25					
FASTIGIATA Italian Cypress	100	T.		4.7.13	ball can box				.75	1.00	1.50
FUNEBRIS Weeping Cypress	60	T.		4.6.13	pot ball can	.25				1.00	2.00
GUADELUPENSIS Blue Cypress. Reddish bark	50	T.		0.4.7	pot ball can			.35			
MACROCARPA Monterey Cypress	100	T.		0.3.5.7	flat pot ball	.02	.25				.75
	CYCAS REVOLUTA Japan— Sage palm	15	L.		2.8.10.13	pot tub			1.50	2.50		
	CYPERUS ALTERNIFOLIUS Madagascar—Umbrella plant	6	L.		2.8.10	pot ball	.25		.50			
GRACILLIMUS Smaller and more graceful	2	L.		2.8.10	pot	.25					
PAPYRUS Egyptian Paperplant	12	L.		2.13.14	sack	.25	.50				
!	CYPHOMANDRA BETACEA Brazil—Treetomato	15	T.S	III	1.2.9.13	pot can			.50			
	CYRTOMIUM FALCATUM Japan—Hollyfern. Glossy	3	F.		8.10	pot	.50					
d	CYTISUS CANARIENSIS Canary Isl.—(Genista)	10	S.	IV	3.6.14	pot can			.25			
dLABURNUM Europe—Golden chain. Laburnu .m.	15	T.	IV	7.9.13	pot can	.25		.75			
SCOPARIUS ANDREANUS S. Eur.—Brown and yellow. Very pretty	8	S.	IV	3.14.13	pot	.25	.35				
!	DAEDALACANTHUS NERVOSUS India—Popular in Flor'da for its flowers	6	S.	V	2.10.13	pot	.25	.50				
	DAHLIA ARBOREA Mex.—Tree Dahlia. Robust grower	15	H.	II	2.9.13	pot can sack	.50				.75	
!IMPERIALIS Flowers more graceful and better color	20	H.	II	2.9.13	pot can sack	1.00					
"PERICLES" Seeding from "arborea"	20	H.	II	2.9.13	pot can sack	.75					
	DAPHNIPHYLLUM MACROPODUM Japan—Handsome leathery leaves	15	S.		3.13.14	pot	.25					
*!	DASYLIRION QUADRANGULATUM Mex.—Graceful and highly ornamental	6	L.		2.4.13	pot	.50					
	DATURA CORNIGERA Horn of plenty. Double	10	S.	I	2.6.13	pot can	.25					
SANGUINEA Peru—Tall growing, single	10	S.	III	2.6.13	pot can	.15				1.00	
SUAVEOLENS Tall, single, trumpetshaped flowers	10	S.	I	2.6.13	pot can	.25			1.00		
	DEERINGIA CELOSOIDES Reddish foliage	10	S.	III	3.13.14	pot can	.25					
FOL. VAR. White variegated foliage	10	S.	I	3.13.14	pot can	.25					
	DENDROCALAMUS LATIFLORUS Formosa—Giant Bamboo. Upright grower	80	B.		2.13	pot can cl'p			1.00	2.50		
							\$5	to	\$50			

Notice DENDROCALAMUS—Giant Bamboo.

I.	II. BOTANICAL NAME.	III. Height	IV. Char.	V. Color	VI. Useful for	VII. What in	VIII. Small	IX. 1-2ft.	X. 2-3 ft.	XI. 3-4 ft.	XII. 4-6 ft.	XIII. 6-8 ft.
*!d STRICTUS	100	B.		0. 2. 13	pot		1.00				
	Himalaya—Taller than any, solid canes.....					can						
	DELPHINIUM in variety	4	H.	V-I	12. 14	pot	.25					
	The well known Larkspur					sack	.15					
!	DIERAMMA PENDULA	6	H.	II	14	pot	.25					
	N. Zealand—Tall, graceful spires.....											
*!	DIOCLEA GLYCINOIDES	12	Cl.	III		pot		1.00				
	Rio de la Plata—Wistaria-like flowers.....											
	DIOSMA ERICOIDES	10	S.	I	3. 11. 14	pot	.25					
	S. W. Africa—Breath of Heaven.....					can		.75				
!	DIOSPYROS KAKI	20	S.T	III	1. 2. 13	can		1.00				
	Japanese Persimmon					sack		.75				
	DIPLACUS GLUTINOSUS	5	S.	IV	4. 10. 15	pot	.25					
	Calif. Bush Monkey flower.....											
*!	DODONAEA VISCOSA	10	S.	III	13	pot		.50				
	Austr.—Very ornamental											
	DOLICHOS LIGNOSUS ALBUS	12	Cl.	I		pot	.10					
	Ind'a—White Austr. Pea. Fine for cut fl'rs.											
*!	DOMBEYA NATALENSIS	30	T.S	I	7. 11. 13	pot		.35		1.00		
	Natal—A sheet of white in winter.....					can						
*! SPECTABILIS	15	S.	II	2. 5. 13	pot		.50	.75			
	Central Afr.—Delicate shade of pink.....					can					1.50	
	DRACAENA AUSTRALIS	25	L.		2. 5. 7. 8	pot	.50	.75				
	Austr.—Broadleaved palmlike					ball				1.00		
 INDIVISA	25	L.		2. 5. 7. 8	tub					1.50	2.50
	Austr.—Narrowleaved					pot	.25	.75		1.00		
 DRACO	20	L.		2. 5. 7. 13	can	.50					
	Canary Islands—Dragonblood tree					pot						
	DURANTA PLUMIERI	12	S.	V	3. 6. 15	pot	.25	.50				
	Trop. Am.—Golden Dewdrops					can				.75	1.00	
! ALBA	10	S.	I	3. 6. 14	pot	.25		1.00			3.00
	Pretty bunches of flowers, fine for cutting....					ball			1.00			
 FOL. VAR.	12	S.	I	3. 6. 14	can			1.25			
	Beautifully marked with white.....					pot	.50					
 ELEGNUS PUNGENS VAR	10	S.	I	3. 13. 14	pot	.25					
	Japan—A spreading shrub					can						
	ERICA MEDITERRANEA	12	S.	II	3. 8. 13. 14	pot	.25	.50				
	The best heath for the South.....					can		.75				
	ERIOBOTRYA JAPONICA (seedlings)	20	T.S	I	1. 2. 7	pot	.25					
	Loquat					ball				.75		
 LARGE FRUITED		T.S	I	1. 2. 7	can				1.00		
	Budded Loquat									2.00		
	ERYTHEA ARMATA	20	P.		2. 5. 7. 13	pot	.25	.50				
	Lower Cal.—Blue palm					can		.75				
! BRANDEGEI	100	P.		2. 7. 13	pot						
	Lower Cal.—Splendid					can			1.00			
 EDULIS	40	P.		2. 5. 7. 13	pot						
	Lower Cal.—A fine Fanpalm					ball	.50					
x!	ERTHRINA CAFFRA	70	T.	III	2. 7. 13	can						
	Natal—A splendid tree					pot		1.00				
x! CORALLODENDRON	30	T.S	III	2. 7. 13	pot						
	W. Indies—Coral tree											
x! CRISTA-GALLI	30	T.	III	2. 7. 8. 13	pot						
	Brazil—The hardiest Coraltree					can					2.00	
*! TOMENTOSA	10	S.	III	2. 13. 14	pot		.50				
	Natal—Dwarf, flowerspikes erect					can						
	ESCALONIA ORGANENSIS	10	S.	II	3. 6. 14	pot	.25	.50				
	S. Am.—Excellent shrub					ball		.75				
 RUBRA	6	S.	III	3. 6. 14	can		1.00				
	S. Am.—Everblooming, compact shrub					pot	.25	.50				
 VIRGATA	12	S.	I	3. 6. 13. 14	ball		.75				
	S. Am.—Magnificent when in bloom.....					can	.25	.35	.50			
									.75			
									1.00			

I.	II. BOTANICAL NAME.	III. Height	IV. Char.	V. Color	VI. Useful for	VII. What in	VIII. Small	IX. 1-2 ft.	X. 2-3 ft.	XI. 3-4 ft.	XII. 4-6 ft.	XIII. 6-8 ft.
	EUCALYPTUS ACMENOIDES White Mahogany	80	T.	I	0.5	can			.25			
AMYGDALINA Peppermint Gum	200	T.	I	0.5	can			.25			
BICOLOR A new one		T.	I	0.7.13	can			.35			
BOSISTOANA A late introduction	80	T.	I	0.7.13	can			.25			
*BOTRYOIDES An ornamental tree	150	T.	I	0.7.13	can			.25			
CALOPHYLLA Large white flowers	50	T.	I	0.7.13	can			.35			
CITRIODORA Lemon Gum—Clean, white trunk	200	T.	I	11.13.12	can		.25	.50			
*CORNUTA Yate tree	80	T.	I	0.5.7	can			.25			
LEHMANNI Dwarf, Roundheaded	20	T.	I	5.7.13	can		.25				
*CORYMBOSA Bloodwood, fine when in flower	100	T.	I	0.5.7	can			.25			
CORYNOCALYX Sugargum	106	T.	I	0	flat can	.01			.25		
CREBRA Narrow leaved Ironbark	100	T.	I	0	can			.25			
*DEANI A new one		T.			can			.35			
*DIVERSICOLOR Karri—Very fine tree	400	T.	I	0.7.13	can			.35			
*!ERYTHRONEMA Redflowered; new		T.	III		pot			.50			
FICIFOLIA Crimson flowered	25	T.	III	7.13	pot can		.25	.50			
GLOBULUS Bluegum	300	T.	I	0.5	flat can	.01	.25				
HAEMOSTOMA White Gum	80	T.	I	0	can		.25				
LEUCOXYLON White Ironbark	100	T.	I	0.7.13	can		.25				
ROSEA Pink flowered	100	T.	II	7.13	can			.25			
MACULATA Spotted Gum, Ornamental	60	T.	I	0	can			.25			
*MARGINATA Yarra	100	T.	I	0	can			.25			
NEMIPHLOIA Stringyback					can			.25			
ALBENSOBLIQUA Very ornamental	300	T.	I	0.7.13	can		.25	.35			
PANICULATA Red Ironbark	50	T.	I	0.7	can			.25			
PILULARIS Blackbutt	300	T.	I	0	can			.25			
POLYANTHEMOS Red Box, Grey-green foliage	250	T.	I	0	can			.25			
PULVERULENTARISDONI Drooping Gum, Very ornamental	20	T.S		13.14	pot		.25	.50			
RESINIFERA Kinogum	100	T.		0.5	can			.25			
ROBUSTA Swamp Mahogany	80	T.	I	0.7	can		.25				
ROSTRATA Red Gum	100	T.	I	0	flat can	.01		.25			
RUDIS Best for dry situation	80	T.	I	0	can				.25		
SALIGNA Quite hardy	200	T.	I	0	can			.25			
SIDEROPHLOIA Large leaved Ironbark	100	T.	I	0.5	can			.25			
TERETICORNIS Flooded Gum	100	T.	I	0	can flat	.01		.25			
VIMINALIS Manna Gum	300	T.	I	0	can		.25				

REMEMBER EUC. FICIFOLIA AND RISDONI.

I.	II. BOTANICAL NAME.	III. Height	IV. Char.	V. Color	VI. Useful for	VII. What in	VIII. Small	IX. 1-2ft.	X. 2-3 ft.	XI. 3-4 ft.	XII. 4-6 ft	XIII. 6-8 ft.
	EUGENIA APICULATA Chili—Pretty small shrub	10	S.	I	3.12.14	pot		.35				
JAMBOS	15	S.	I	1.2.14	pot		1.00				
*!	E. Indies—Rose-apple					can						
*!MALACCENSIS Recent introduction			I	1	pot	1.00					
!MICHELI Brazil—Surinam Cherry. Fine fruit	12	S.	I	1.3.14	pot		.35				
						ball			.75			
						can			1.00			
!MICROPHYLLA A late acquisition, fine foliage	6	S.	I	8.10	pot		.75				
MYRTIFOLIA Austr.—A splendid tree	60	T.	I	3.7.13.14	pot		.25	.35			
(SHEARED PYRAMIDS) For use as Bay or Boxtrees				8.13	ball			.75	1.00	1.50	
						can			1.00	1.50	2.00	
(TRAINED STANDARDS) To be used as Bay or Boxtrees				8.13	tub				2.00	2.50	
						ball			1.00	1.50	2.00	
						can			1.50	2.00	2.50	
						tub				2.50	5.00	
UGNI Chili—An excellent small shrub	12	S.	I	3.14	pot	.35	.50				
	EUONYMUS JAPONICUS ARG. VAR. Nicely variegated	10	S.	I	3.6.13	pot	.25	.35				
						ball		.75				
						can		1.00				
AUR. VAR. Yellow variegated	10	S.	IV	3.6.13	pot	.25	.35				
						ball		.75				
						can		1.00				
PULCHELLUS A substitute for Box in borders	2	S.		3.12	pot	.25					
	EUPATORIUM GRANDIFLORUM Fine for cut flowers	6	H.	I	12.14	pot		.25				
*!RIPARIUM S. Am.—Winterbloomer	6	H.	I	14	pot		.25				
!	EUPHORBIA BIGLANDULOSA New					pot		.50				
*!CANARIENSIS Canary Isl.—Curious, cactus like plants	20	L.		2.13	pot						
!PINEA Recently acquired					pot		.50				
PULCHERRIMA Mex.—Poinsettia	15	S.	III	2.8.14	pot	.25					
						can					.50	
SPLENDENS Madagascar—Crown of thorns. Good in walls	4	Cr.	III	2.4.8	pot		.25				
*!TIRUCALLI Makes quite a tree, very odd	15	T.		2.13	ball		.25				
d	EXOCHORDA GRANDIFOLIA China—Pearlbush. Brilliant	10	S.	I	3.14	can					1.00	
						sack						
	FABIANA IMBRICATA Peru—Pretty green, flowers like Heath	10	S.	I	3.14.15	pot		.25				
						can			1.00			
	FARFUGIUM GRANDE VAR Leopard plant. Curiously spotted	4	L.	IV	2.8.10	pot						
	FATSIA JAPONICA Japan—Aralia. Good houseplant	8	L.	I	2.8.13	ball		.25	.35			
						can			1.00			
PAPYRIFERA Japanese Paperplant	15	L.	I	2.13	pot		.25				
*!	FEIJOA SELLOWIANA LaPlata—Strong scented, palatable fruit	14	S.	III	1.13	pot	.25	.50	.75		1.00	
	FESTUCA GLAUCA A greygreen grass, very good for borders	1	L.		12	can	.25					
PULCHERRIMA Mex.—Poinsettia	15	S.	III	2.8.14	sack	.10					
	FICUS RUBIGINOSA Austr.—One of the hardiest	100	T.		7.13	pot					2.50	
*!SP. from Cabul A new fig from N. India with fine fruit	20	T.S		1.2	can		.50				
*!CUNNINGHAMI Queensland—A splendid tree	80	T.		7.13	pot		1.00			1.50	3.00
						can						

EUGENIA MICHELI, a splendid fruit.

I.	II. BOTANICAL NAME.	III. Height	IV. Char.	V. Color	VI. Useful for	VII. What in	VIII. Small	IX. 1-2ft.	X. 2-3ft.	XI. 3-4ft.	XII. 4-6ft.	XIII. 6-8ft.
ELASTICA Assam—True rubber tree	60	T.		0.7.13	pot						
GLOMERATA India—Cluster fig	70	T.		1.2.7.13	pot		.50				
*!HISPIDA India—Curious rough leaves	50	T.		2.13	pot			1.00			
INDICA Small leaved Rubber	100	T.		2.7.13	pot					2.00	
MACROPHYLLA Moreton Bay Fig	100	T.		2.5.7.13	pot					1.50	
*!NEMORALIS India—Very graceful	20	T.S		2.13	pot		.50	.75	1.00		
*!PRINCEPS Brazil—Splendidly veined leaves	60	T.		2.13	pot	.50	1.00			2.50	
*!PSEUDO-CARICA Abyssinia—Bears very sweet figs.....	30	T.S		1.13	pot		.50				1.00
!QUERCIFOLIA India—Oakleaved	10	Cl.			pot						
*!RELIGIOSA India—"Peepul," curious leaves	100	T.		2.13	pot		1.00				
PUMILA (Ficus repens.) Fine for covering walls....	20	Cl.			pot	.15					
*!RETUSA India—Leaves round and small.....	80	T.		2.13	pot		.50				
	FOURCROYA ALTISSIMA	20	L.	I	2.13	sack	.25					
*!	FOURCROYA GIGANTEA VAR..... Trop. Am.—A majestic plant, very rare.....	20	L.	I	2.13	pot		2.50				
BEDDINGHOUSI Mex.—Like a gigantic Dracaena	20	L.	I	2.13	pot						
	FUCHSIA ARBORESCENS Mex.—Winterblooming	15	S.	III	3.6.14	pot	.25					
CORYMBIFLORA Peru—Very handsome, not common.....	10	S.	III	2.14	pot		.25	.35			
RICARTONI Terra del Fuego—Dense growing & floriferous	15	S.	III	3.6.14	pot	.25				.75	
GARDEN VARIETIES	15	S.	III	3.8.14	pot	.25					
	FURCRAEA, (see Fourcroya)											
*!	GALPHIMIA BRAZILIENSIS Brazil—Flowers very bright in winter.....	8	S.	IV	2.3.13	pot	.50					
	GAILLARDIA ARISTATA GRANDIFLORA Fine for cut flowers		H.	IV	12.14	pot	.25					
*!	GARYA FREMONTI Calif.—For the native garden	15	S.	I	3.13.15	pot	.25					
ELLIPTICA Calif.—Beautiful glossy foliage	15	S.	I	3.13.15	pot		.35				
	GAZANIA SPLENDENS S. Afr.—Exceedingly bright	1	H.	IV	9.12.14	pot	.25					
*!	GENISTA AETHNENSIS Sicily—Graceful, a veritable golden shower..	15	T.S	IV	13	pot	.50					
ANDREANA S. Eur.—Brown and yellow, highly desirable..	15	S.	IV	3.13.14	pot		.25	.50			
CANARIENSIS Canary Isl.—A mass of bloom in spring	10	S.	IV	3.6.15	pot		.25				
*!MONOSPERMA N. Afr.—Drooping, feathery, graceful.....	15	S.	I	4.13	pot		.25	.50			
*!	GEODOSIA REGIA For hanging baskets	2	Cr.	I	8.12.14	flat	.05		2.50			
CHAS. TURNER For window boxes	2	Cr.	III	8.12.14	flat	.05					
"BUSH" JOHN FORBES The best scarlet	6	H.	III	8.12.14	flat	.05					
MAD. SALLEROI Dwarf, variegated borderplant	1	H.	I	12.14	flat	.05					
	GERBERA JAMESONI S. Afr.—Barborton Daisy	2	H.	III	14	pot	.25	.35				
	GINGKO BILOBA W. China—Maidenhair tree	20	T.		7.13	pot	.25				1.00	

GALPHIMIA is a charming shrub.

I.	II. BOTANICAL NAME.	III. Height	IV. Char.	V. Color	VI. Useful for	VII. What in	VIII. Small	IX. 1-2ft.	X. 2-3 ft.	XI. 3-4 ft.	XII. 4-6 ft	XIII. 6-8 ft.
	GEUM CHILOENSE Bright and showy flowers	4	H.	III	14	sack	.25					
	GNAPHALIUM LANATUM S. Afr.—For hangingbaskets and borders	4	S.Cr	I	5.6.12.14	flat pot	.05 .25					
x!	GONOLOBIUM EDULE Cent. Am.—Fast growing, fruit like squash		Cl.	I		pot		1.00				
!	GREVILLEA HILLIANA Austr.—Beautiful tree, splendid foliage	30	T.		2.7.13	pot			1.50			
	ROBUSTA Austr.—Silk oak	30	T.	VII	7.13	pot can		.25				.75
	THELEMANNI Austr.—One of the best shrubs; everblooming	10	S.	III	3.13.14	pot can	.25	.50				
	GYNERIUM ARGENTEUM S. Am.—Pampas grass	15	B.	I	2.13	sack	.25	.50		1.00		
	JUBATUM Pink flowered Pampas grass	15	B.	II	2.13	sack	.25	.50				
d	GYPSOPHYLLA PANICULATA Europe—Baby's Breath	4	H.	I		sack	.25					
*!	HAKEA ELLIPTICA Austr.—Symmetrical, roundheaded	15	T.S	I	5.6.13	pot can			1.00			
	LAURINA Austr.—Remarkable flowers	15	T.S	III	5.6.13	pot can				1.00		
	SUAVEOLENS Austr.—Spinelike foliage	15	T.S	I	5.6.13	pot can	.35			1.00		
	HARDENBERGIA ALBA Austr.—Beautiful shrub	8	S.	I	3.9.14	pot	.25	.35				
	BLUE Fine when in flower	8	S.	V	3.9.14	pot	.25					
	PINK Purplish pink	8	S.	II	3.9.14	pot	.25					
*!	HARPEPHYLLUM CAFFRUM S. Afr.—Kaffirplum, splendid	60	T.		1.2.7.13	pot can	.50		1.00			
	HELYCHRYSUM PETIOLATUM S. Afr.—For window boxes and baskets	4	S.Cr.	I	5.6.12.14	pot	.25					
	HEDERA HELIX English Ivy	30	Cl.			pot sack	.10 .05					
!	HEDYCHIUM CARNEUM India—Flesh colored Gingerplant	8	L.	IV	0.2.13	can ball			1.00		5.00	
!	CORONARIUM India—Large heads of flowers	10	L.	I	0.2.11.13	pot can			1.00			
	HELIOPSIS PITCHERIANUS U. S. A.—Fine for cut flowers	4	H.	IV	14.15	pot sack	.10					
	HELIOTROPE DARK LIGHT	10	S.	V	3.11.14	pot	.25	.35				
*!	HETEROCENTRON MEXICANUM A splendid bedder	8	S.	I	3.6.14	pot	.25					
	HETEROMELES ARBUTIFOLIA Cal.—Christmas berry	15	S.	III	3.4.15	pot can	.25					
	HEUCHERA SANGUINEA N. Mex.—Coral Bells	2	H.	III	13.14	pot sack		.25				
!	HIBISCUS DENISONIAE Austr.—White Wings. Everblooming	8	S.	I	3.13.14	pot		.50				
*!	HETEROPHYLLUS Queensland—Everblooming, quite a tree	14	S.	I	13.14	pot		.50				
S. China	MANIHOT Flowers with maroon center, 6 in. across	8	S.	IV	13.14	pot can	.25		1.00			
	MOSCHEUTOS U. S. A.—Crimson Eye	6	S.	II	13.14	pot can						
	MUTABILIS India—Flowers changing from white to red	18	S.T	II	2.3.13	pot can			1.50			
	PEACHBLOW Flowers large and double	10	S.	II	2.3.13	pot can box	.25	.50				5.00
	ROSA-SINENSIS The general favorite	10	S.	III	2.3.13	pot can box	.25	.35	.50		1.50	
d	DOUBLE SYRIACUS Asia—Rose of Sharon	8	S.	III	2.3.13	pot	.25					
		10	S.	VI	3.13.14	pot	.25					

You will be delighted with a HETEROCENTRON.

I.	II. BOTANICAL NAME.	III. Height	IV. Char.	V. Color	VI. Useful for	VII. What in	VIII. Small	IX. 1-2ft.	X. 2-3ft.	XI. 3-4ft.	XII. 4-6ft.	XIII. 6-8 ft.
!	HOLBOELLIA LATIFOLIA Himalaya—Vigorous, fruit like a pear		Cl	V	1.11	pot						
	HOYA CARNOSA Trop. As'a—The Wax plant	20	Cl	I	11	pot				.75		
x	HOWEA (Kentia) BELMORENA Lord Howe's Isl.—Popular housepalm	25	P.		2.8.10.13	pot tub	.35	.75	1.50		5.00 7.00	
 FOSTERIANA Taller and more upright than the proceeding.	40	P.		2.8.10.13	pot tub	.35	.75	1.50		5.00 6.00	
	HYDRANGEA OTASKA China—Dwarf and compact	6	S.	II	3.8.14	pot ball	.25	.50				
*	HYMENOSPORUM FLAVUM Austr.—Jasmine-like fragrance	50	T.	IV	7.11.13	pot can	.25		.50			1.50
	HYPERICUM FLORIBUNDUM Canary Isl.—Quick grower	10	S.	IV	3.14	pot ball can			.25		1.00 1.50	
 MOSERIANUM Hybrid—Goldflower, large flowers	3	S.	IV	12.14	pot	.35					
!d	IDESIA POLYCARPA Japan—Large leaves, orange berries like cherry	50	T.	VII	7.13	pot ball	.50					
!	IOCHROMA FUCHSIODES Ecuador—Beautiful shrub	10	S.	III	13.14	pot can	.50		1.00			
 LANCEOLATA Peru—Great attraction for hummingbirds	10	S.	V	13.14	pot can		.25				
	IREGINE HERBSTI S. Am.—(Achyranthes) Often planted at the base of palms	10	L.	III	12.14	pot flat	.10 .5					
	ISOLEPIS GRACILIS Calif.—A bright grass used in baskets and aquariums.	1	B.		8.10	pot	.25					
!	ISOPOGON ANETHIFOLIUS	5	S.	II		pot	.75					
! PETIOLATUS	5	S.	II		pot	.75					
*	JACARANDA OVALIFOLIA Brazil—Pallisanderwood, for street planting	40	T.	V	7.13	pot can sack		.25	.50		.75	1.00
	JACOBINIA (Justicea) CARNEA Brazil—Dense spikes of flowers	10	S.	II	2.10.14	pot	.35					
 MAGNIFICA Brazil—Everblooming, brilliant red	8	S.	III	2.10.14	pot can	.35		1.00	1.50		
 PAUCIFLORA Brazil—(Libonia) Compact and everblooming	6	S.	VII	3.13.14	pot	.25	.35				
	JASIMINUM AZORICUM Canary Isl.—Everblooming	15	Cl.	I	11	pot can	.25	.35		1.25		
 GRACILLIMUM N. Borneo—Winterbloomer; flower in clusters	15	Cl.	I	11	pot can						
 GRANDIFLORUM India—Catalonian Jasmine	20	Cl.	I	11	pot can	.25	.35				
 LIGUSTRIFOLIUM S. Africa—Summer blooming	15	Cl.	I	11	pot can	.25	.35	.50	1.25		
d NUDIFLORUM China—Trailing, winterblooming	8	S.	IV	3.11.14	pot						
 PRIMULINUM First offered a few years ago	8	S.	IV	11.14	pot		.50				
 HUMILE (Revolutum) Trop. Asia—Yellow Jasmine	10	S.	IV	3.11.14	pot	.25	.35	.50			
	JUBAEA SPECTABILIS Chile—Coquito palm; very hardy	40	P.		2.13	pot can ball		1.00		2.00 1.50		
	JUNIPERUS SABINA PROSTRATA S. Europe—Creeping Juniper; for rockeries	4	S.		12	ball						
 VAR. A variegated form	4	S.	I	12	pot	.25					
*	KENNEDYA NIGRICANS Aust.—Robust grower, flowers almost black	10	Cl.S.	V		pot		.50				
 OVATA ROSEA Australia.		Cl.S.	II		pot	.25					
 RETRORSA Australia—A new introduction		Cl.S.			pot	.25					

One HYMENOSPORUM will perfume the whole garden.

I.	II. BOTANICAL NAME.	III. Height	IV. Char.	V. Color	VI. Useful for	VII. What in	VIII. Small	IX. 1-2ft.	X. 2-3 ft.	XI. 3-4 ft.	XII. 4-6 ft.	XIII. 6-8 ft.
x	KENTIA BELMOREANA	25	P.		2.8.13	pot	.35	.75	1.50			5.00
	Lord Howe's Isl.—Well known house palm..					tub						7.00
xFOSTERIANA	30	P.		2.8.10.13	pot	.35	.75	1.50			5.00
	Lord Howe's Isl.—Grows well in shade here					tub						6.00
	KERRIA JAPONICA	10	S.Cl.	IV	6.12.14.15	pot	.25					
	Japanese Rose											
	KNIPHOFIA ALOIDES	4	H.	III	2.6.13.14	pot	.25					
	S. Africa—Red hot poker plant					ball		.50				
	LABURNUM VULGARE	15	S.T	IV	7.13	pot	.25					
	S. Europe—Golden chain					can					.50	
	LAGERSTROEMIA INDICA	15	S.T	II	7.9.13	can						
	S. Asia—Crepe Myrtle					ball					.75	
						sack					.50	
	LAGUNARIA PATTERSONI	30	T.S	II	7.13	pot		.25	.50			
	Austr.—Tree Hibiscus. Fine street tree.					can						.75
	LANTANA ORANGE		S.	VII	3.6.14	pot		.25				
	A very good color					can						.75
WHITE	10	S.	I	3.6.14	pot		.25				
	Will get along anywhere					can		.35				
DWARF—ORANGE	4	S.	VII	3.12.14	pot	.25					
 WHITE			I			.25					
 LEMON			IV			.25					
 YELLOW			IV			.25					
	Unsurpassed for everblooming borders											
!LILACINA	8	S.	V	14	pot						
	A new one.											
SELLOWIANA	15	Cl.Cr	II	12.14.15	pot		.25				
	S. Am.—Trailing Lantana; profuse bloomer					can					.75	
d	LATHYRUS LATIFOLIUS	15	Cl.	II	6.15	pot	.10					
	Europe—Perennial Pea											
	LATANIA BORBONICA	12	P.		2.8.10.13	pot	.25				1.50	
	China—(Livistona) Good house palm					tub						
	LAURUS CERASUS	15	S.		10.13	pot	.25					
	English laurel					ball		.35				
NOBILIS	15	T.S		7.8.13	pot					1.00	
	Med'terrear—Sweet Bay					can						.75
 TINUS	10	S	I	3.8.14	pot						
	S. Europe—Splendid hedge plant, everblooming					ball						.75
 ROTUNDIFOLIUS	10	S.	I	3.8.14	pot	.25					
	A round leaved form					ball						
 can					can						
	LAVENDULA VERA	2	H.	VI	11.12.14	pot	.25					
	True English Lavender					ball						
	LEMON "EUREKA"	20	T.	IV	1.3.7	can						1.75
	The best all around variety											
	LEONOTUS LEONURUS	10	S.	VII	3.6.14	pot		.25				
	S. Africa—Lion's tail					can						
	LEPTOSPERMUM LAEVIGATUM	15	S.	I	3.6.15	pot	.25					.75
	Australian Tea—Leaves used as tea					can						
!	LEUCADENDRON ARGENTEUM	40	T.	I	13	pot						
	S. Africa—Silvertree											
	LEUCOJUM VERNUM	2	H.	I	12.14	bulb	.5					
	Europe—Snokflake, splendid for cut flowers											
	LEUCOTHOE CATESBAEI	6	S.	III	10.15	pot		.75				
	Southern States—Handsome autumn colors..											
	LIBOCEDRUS DECURRENS	100	T.S		6.13.15	pot-						
	Calif.—White Cedar, bark cinnamon red....					can						
	LIBONIA FLORIBUNDA	6	S.	VII	3.12.14	uot	.25	.35				
	One of the brightest everblooming shrubs											
	LIGUSTRUM AUREA VARIEGATA	12	S.	IV	3.14	pot	.25					.75
	Yellow variegated Privet					can						
 JAPONICUM	20	S.T	I	3.7	pot		.25				
	California Privet					flat	.2					
 LUCIDUM	30	T.S	I	3.7.13	pot		.25				.75
	Japan—Tree Privet					ball		.25				
						can						1.00

LAGUNARIA is compact, neat, free blooming.

I.	II. BOTANICAL NAME.	III. Height	IV. Char.	V Color	VI. Useful for	VII. What in	VIII. Small	IX. 1-2 ft.	X. 2-3 ft.	XI. 3-4 ft.	XII. 4-6 ft.	XIII. 6-8 ft.
	LIME "MEXICAN"	20	S.T	IV	1.3.4	can				1.50		
	Fine for hedges											
	LINUM FLAVUM	6	S.	IV	12.14	pot		.35				
	Europe—Very floriferous, a good yellow....											
! MONOGYNUM					pot		.35				
	A late introduction											
d	LIPPIA CITRIODORA	15	S.	VI	3.11.14	pot		.25				
	Peru—Lemon verbena											
* REPENS	1	Cr	VI		per square foot		.25				
	For lawns											
 URTICOIDES					pot		.25				
	Tall, broadleaved plant											
	LIVISTONA AUSTRALIS	25	P.		2.7.13	pot			1.00			
	(Corypha Australis) Fan leaf					can						
 SINENSIS	12	P.		2.8.10.13	pot	.25			2.50		
	(Latania Borbonica) Graceful, fanleaf					ball						
					box			1.50			
!	LOESELIA COCCINEA	5	S.	III	3.14.15	pot		.25				
	Mex.—Handsome winterbloomer					can			1.00			
!	LONCHOCARPUS					pot		1.00				
	Late introduction											
	LONICERA JAPONICA HALLIANA	15	S.Cl	IV	11.14.15	pot		.25				
	Japan—Very vigorous					ball				.50		
					can				.75		
 AUREA RETICULATA	10	Cl.	IV		pot		.25				
	Leaf handsomely netted yellow					can						
	LOTUS BERTHOLETTI	8	ClCr	III	9	pot	.25					
	Canary Isl.—Coral gem, Pico paloma											
 HORRIDUM	10	S.	III	3.4.5.13	pot	.25					
	S. Africa—Splendid when in berry.											
*!	LYONOTHAMNUS FLORIBUNDUS	50	T.	I	5.7.13.15	pot		.75	1.00			
	Var. ASPLENIFOLIUS					can					2.00	
	Santa Cruz Island—Ironwood, Palo fierro...											
!	MACADAMIA TERNIFOLIA	20	T.		1.2.13	pot	.50					
	Queensland nut—Splendid tree											
!	MACKAYA BELLA	10	S.	VI	3.10.14	pot	.25					
	Natal—Pretty flowers, fine for shady places					can				1.00		
	MAGNOLIA GRANDIFLORA	50	T.	I	7.13	pot		.35				
	Southern States—Well known tree					can				1.50	2.50	
					box						5.00
 SOULANGEANA	20	T.S	V	11.13	pot		.50		.75		2.50
	Japan—Flowers large, early and numerous					can						
d STELLATA	15	T.S	I	11.13	pot						
	Japan—Flowers large, early and numerous...					can						
	MAHERNIA VERTICILLATA	4	Cr.	IV	11.12.14	pot	.25					
	Cape Good Hope—Honey bells					flat	.10					
	MAHONIA AQUIFOLIA	8	S.	IV	3.10.15	pot	.25					
	Pacific Coast—Oregon grape					can			.75			
	MALUS BACCATA	14	S.T	II	13.15	pot		.25				
	Flowering Apple, pretty fruit											
!	MALVASTRUM CUSPIDATUM		S.			pot	.25					
 BORBONICUM		S.			pot	.25					
	South Africa—Easy culture, summer blooming											
	MALVA VISCUS ARBOREUS	15	S.	III	3.8.14	pot		.25	.35			
	South America—Turks cap; very showy					can						
	MANDARIN "WILLOWLEAF"	10	S.T	IV	1.3.13	can			1.50			
d	MANDEVILLEA SUAVEOLENS	20	Cl.	I	11	pot		.25				
	Chili Jasmine					can						
*x!	MARGYRICARPUS SETOSUS	2	Cr.	I	12.14	pot	.25					
	Peru—For rockeries											
	MARGUERITE, WHITE	5	H.	I	3.9.14	flat	.5					
	Paris daisy					pot	.10					
 YELLOW	5	H.	IV	3.9.14	flat	.5					
					pot	.10					
 CORONATION	5	H.	I	3.9.14	flat	.5					
	An improved variety					pot	.10					
 QUEEN ALEXANDRA	5	H.	I	3.9.14	flat	.5					
	White, with brown center					pot	.10					

You will want a MAGNOLIA if nothing else.

I.	II. BOTANICAL NAME.	III. Height	IV. Char.	V. Color	VI. Useful for	VII. What in	VIII. Small	IX. 1-2ft.	X. 2-3 ft.	XI. 3-4 ft.	XII. 4-6 ft.	XIII. 6-8 ft.
	MATHIOLA INCANA Stock; Gilliflower	2	H.	all	11.14	flat	.5					
	MAYTENU BOARIA Chili—Beautiful evergreen tree	25	T.S	I	5.7.13	pot can						
*!	MEDICAGO ARBOREA S. Europe—Tree alfalfa	10	S.	IV	0.5.6	pot		.25	.35			
	MELALEUCA ALBA Pinelike foliage, branches gracefully drooping	20	T.S	I	5.6.14	pot can		.25	.35	.50		
 ARMILLARIS Pendant clusters of white flowers	15	S.	I	5.6.14	pot can			.50		1.00	
 DECUSSATA One of the most showy	15	S.	VI	5.6.14	pot can		.25				
! GENISTICIFOLIA Leaves used for tea	15	S.	I	5.13.14	pot can					1.50	
 HYPERICIFOLIA Very effective	15	S.	III	5.13.14	pot can		.50	.35	1.00		
! LEUCADENDRON Cajeput tree, handsome	40	T.	I	5.7.13	pot can			.50	.75		
! WILSONI Turns a beautiful color in fall All the above Bottlebrushes from Australia	15	S.	I	5.13.14	pot can		.50		1.50		
d	MELIA AZEDERACH India—Umbrella tree	20	T.	VI	7.13	can pot		.25				
	MELIANTHUS MAJOR S. Africa—Honey flower	8	L.	V	2.9.15	pot can			.50			
x!	MELIACCA BIJUGA Guiana—Spanish Lime or Gienp	40	T.	I	1	pot		2.50				
	MENTHA PIPERITA The common Mint	3	H.		0.10.11	sack	.25					
*	METROSIDEROS ROBUSTA New Zealand—Gorgeous	30	T.S	III	2.3.8.13	pot ball can can		.35	.75	1.00		
	MICHELIA FUSCATA China—Banana shrub	15	S.	IV	2.11	can						
	MIMOSA SPEGAZINI Argentina—Sens'tive plant	10	S.	6	3.4.13.14	pot		.25				
	MIMULUS GLUTINOSUS California—Bush Monkeyflower	6	S.	IV	4.10.15	pot	.25					
	MIRASOLIA DIVERSIFOLIA Mexico—Giant perennial sunflower	15	H.	IV	5.9.13.15	pot can			.35			
	MONSTERA DELICIOSA Trop. Am.—Ceriman. Large leathery leaves	10	CLL		1.2.13	pot can		1.00				
	MUEHLENBECKIA COMPLEXA New Zealand—Wirevine; foliage like Maiden-hair	40	CL.			pot can		.25				
 PLATYCLADOS Solomon Isl.—Flat leaves, showy fruit	20	S.CL.		2.5.6	pot can		.25				.75
	MUSA ENSETE Abyssinian Banana	20	L.		2.8.13	pot can	.25					1.00
*!	MYOPORUM ACUMINATUM Australia—Clean-looking tree; glossy leaves	20	T.S		5.7.13	pot can		.35	.50			
 LAETUM New Zealand—Unsurpassed for coast planting	30	T.S		5.7.13	pot can			.50		1.00	
	MYRTUS COMMUNIS South Europe—The classic Myrtle	10	S.	I	3.11.14	pot can		.25				
 MICROPHYLLA NANA Makes the best low hedge obtainable	2	S.	1	3.13	pot ball can	.25		.50	.75		
 UGNI Chilean Guava	10	S.	I	1.3.14	pot	.35	.50				
	NANDINA DOMESTICA Japan—Heavenly Bamboo	10	S.	I	2.8.10.13	pot		1.00				
	NARCISSUS PAPER WHITE Early and pure white		H.	I	12.15	100 doz.	2.50 .35					
 EMPEROR Large yellow with good stems		H.	IV	12.15	100 doz.	2.50 .35					
 EMPRESS White perianth, yellow trumpet		H.	IV	12.15	100 doz.	2.50 .35					
 DOUBLE VON SION Double yellow, early		H.	IV	12.15	100 doz.	2.50 .35					

METROSIDEROS—The best thing on the page.

I.	II. BOTANICAL NAME.	III. Height	IV. Char.	V. Color	VI. Useful for	VII. What in	VIII. Small	IX. 1-2ft.	X. 2-3ft.	XI. 3-4ft.	XII. 4-6ft.	XIII. 6-8ft.
SIR WATKIN		H.	IV	12.15	100	2.50					
	Cup fringed, deep yellow, perianth pale					doz.	.35					
	NEPHROLEPIS BOSTONIENSIS	6	Fn.		8.10	pot		.75	1.00			
	Boston fern, Sword fern					tub					5.00	
	NERIUM OLEANDER, WHITE	15	S.	I	2.3.14	pot		.35	.75			
	S. Europe—Oleander					can					1.00	
PINK	15	S.	II	2.3.14	pot		.35	.75			
NIEMBERGIA GRACILIS	6	S.	I	12.14.15	can					1.00	
	Trop. Am.—Cupflower, everblooming, bright					pot	.25	.35				
!	OLEA CHRYSOPHYLLA	8	S.		13	pot	.35					
	S. Africa—Pretty foliage											
EUROPEA	20	T.		1.4.7	ball			.75			
	Common Olive					can					1.00	
	ONYCHIUM JAPONICUM	4	F.		8.10	pot		.50				
	Japanese Hollyfern, glossy foliage											
!	OPHIPOGON JAPONICUM	1	H.	V	12.14	sack	.10					
	Japan—Emerald flowers, used as border ...											
!JABURAN, Var.		H.	I	8	pot	.50					
	Beautifully variegated, fine for rockeries ...											
	ORANGE, WASHINGTON NAVEL	15	T.S	IV	2.7	can			1.50			
VALENCIA, LATE	15	T.S	IV	2.7	can			1.50			
	ORNITHOGALUM ARABICUM		H.	I	14	100	2.50					
	Mediterr.—Star of Bethlehem					doz.	.35					
SAUNDERSONI		H.	I		pot	.25					
	A late introduction											
	OSMANTHUS AUQUIFOLIUM		S.T	I	3.10.15	can			1.50			
	Japan—Autumn flowering; leaves glossy ...					pot	.25					
FRAGRANS	10	S.	I	8.10.11	can			2.00			
	India—Sweet Olive; very fragrant					pot	.25					
ILICIFOLIUS	10	S.	I	8.10.11	can			1.50			
	Japan—Compact, dense, holly-leaved					pot	.25					
!	OSTEOMELES ANTHYLLIDAEFOLIA	6	S.	I	5.15	pot	.50					
	Pacific Isl.—Red-fruited, light green foliage											
	OXALIS	½	H.		12.14	100	1.50					
	S. Africa—In several varieties and colors....					doz.	.25					
*!	PACHISTIMA MYRSINITES	20	S.	III	13	pot			.50			
	Pacific Coast—Hardy, graceful, reddish fruit					can					1.00	
x	PANDANUS VEITCHII	20	L.	I	2.8.10.13	pot		1.00				
	Polynesia—Striped Screw pine											
xUTILIS	20	L.		2.8.10.13	pot		1.00				
	Madagascar—Grows well in partial shade ...											
	PANICUM EXCURRENS	8	B.		2.10.15	pot		.25				
	Tropical Africa—Palmgrass, sub-tropical effect					sack	.10					
	PAPYRUS ANTIQUORUM	12	L.		2	ball			.50			
	Egyptian Paperplant; quick and graceful ...					sack	.25					
!	PARATROPIA STELTZNERIANA	20	S.T		2.5.8.13	pot		.50				
	Guatemala—Quick, hardy, glossy and rare....					can					2.50	
	PARIETARIA ARBOREA	15	S.T		0.2.13	pot			.50			
	Quick grower, foliage red-veined					can						
	PARKINSONIA ACULEATA	15	S.	IV	4.9.13	pot	.25	.50				
	S. W. States—Jerusalem Thorn; very graceful											
TORREYANA	15	S.	IV	4.9.13	pot						
	S. W. States—Palo Verde; Ironwood											
!	PASSIFLORA EDULIS	20	Cl.	VI	1	pot	.25		.50			
	Brazil—Fruit fragrant and edible					can						
*!LAURIFOLIA	20	Cl.	VI	1.2	pot			1.00			
	Jamaica Honeysuckle, Water Lemon											
	PASSIFLORA MANICATA	40	Cl.	III	2	pot	.25	.35				
	Brazil—The scarlet Passionvine (Tacsonia)					can						
	PAVONIA SPINIFEX	15	S.	IV	3.6.15	pot	.25					
	S. America—Spreading shrub, for ground cover					can		1.00				
*!	PELARGONIUM ECHINATUM	6	S.	II	4.8	pot	.25					
	S. Afr.—Flowers changing from white to pink											
DOMESTICUM	6	H.	All	3.14	pot	.25					
	Lady Washington Geranium											
GRAVEOLENS	6	H.	II	3.5.14	pot	.25					
	Rose Geranium											
LIMONIUM	6	H.	II	3.11.14	pot	.25					
	Lemon Geranium											

Don't overlook the edible and the scarlet PASSIFLORA.

I.	II. BOTANICAL NAME.	III. Height	IV. Char.	V. Color	VI. Useful for	VII. What in	VIII. Small	IX. 1-2ft.	X. 2-3 ft.	XI. 3-4 ft.	XII. 4-6 ft	XIII. 6-3 ft.
PELTATUM	6	Cr.	All	12.14	flat	.5					
	Ivyleaved Geranium; white, pink and scarlet					pot	.15					
ZONALE	6	H.	All	3.14	flat	.5					
	Common Geranium (John Forbes, scarlet) ...					pot	.15					
	PENTSTEMON CORDIFOLIA	15	Cl.	III	4.10.15	pot	.25					
	California Pentstemon; bright and showy											
GARDEN VARIETIES	6	H.	All	14	pot	.15					
	Well known bedding and border plant					flat	.5					
	PERSEA GRATISSIMA	30	T.		1.7.13	pot		.50				
	Tropical America—Alligator pear, Ahuacate					can				1.50	2.00	
INDICA	30	T.S		7.13	pot		.50				
	Azores—Handsome tree.					can					1.00	
d	PHILADELPHUS CORONARIUS	8	S.	I	11.14	pot	.25					
	Caucasus—Mock orange; Syringa.					sack	.25					
SEMPERVIRENS	20	Cl.	I	11.15	pot		.50				
	A nearly evergreen and climbing form					can						
	PHOENIX RECLINATA	40	P.		2.7.13	can			1.00			
	South Africa—Slender trunk, graceful.					ball			.75	1.00		
CANARIENSIS	60	P.		2.7.13	can			1.50		3.00	
	Canary Islands—The ornamental Datepalm...					ball			1.00	1.50	2.00	
ROEBELINI	10	P.		8.13	tub			2.00			6.00
	Siam—Dwarf, pretty and graceful					pot	1.00					
ZEYLANICA	10	P.		2.8.10	can			2.50			
	Ceylon—Leaves Isender, gracefully drooping											
	PHORMIUM TENAX	12	L.		2.13.14	pot		.25				
	New Zealand Flax—Good for subtropical effect					ball						
VAR.	12	L.	I	2.13.14	can		.75				
	A white striped variety					ball		.75				
	PHOTINIA SERRULATA	20	S.	I	3.13.15	can		1.00				
	China—Hardy, leaves and fruit red in fall					pot						
ARBUTIFOLIA	20	S.	I	3.13	pot	.25					
	California Christmas berry											
	PHYLLOSTACHYS AUREA	15	B.		2.3.8.13	ball				.75		
	China—Golden Bamboo, compact clumps					can				1.00	1.50	
NIGRA	10	B.		2	tub				1.50	2.50	
	N. China—Black Bamboo					ball			1.00			
QUILIOI(?)	20	B.		2.3.13	ball					1.50	
	Name uncertain, but a vigorous, tall variety					sack			.75			
VIRIDI-GLAUCESCENS	40	B.		2.3.13	ball					1.50	
	N. China—Fish-pole Bamboo.					sack			.75			
	PILEA MICROPHYLLA	2	L.		8.10	pot	.25					
	S. America—Artillery plant.											
	PINUS CANARIENSIS	60	T.		5.7.13	ball			.75	1.00	1.50	
	Canary Island Pine—Branches in whorls					can				1.25		
GERARDIANA	60	T.		1.7.13	ball	.35					
	Himalaya—Bluish green											
*HALEPENSIS	100	T.		5.7	ball						1.50
	Mediterranean—Aleppo Pine											
INSIGNIS	150	T.		5.7.13	pot		.25				
	Monterey Pine					ball			.75	1.00	2.00	3.00
PINEA	100	T.		5.7.13	can				1.25		
	S. Europe—Stone Pine, Umbrella Pine.					pot			.75	1.00		
TORREYANA	50	T.		5.13	ball	.25			1.25		
	S. California—Soledad Pine											
*x!	PIPER NIGRUM	10	Cl.		0.10	pot		.50				
	Tropical Asia—Pepper of commerce											
d	PIRCUNIA DIOICA	30	T.		6.7.13	pot			.25		.75	
	River Plate—Ombu; fast grower					can						
d*!	PISTACIA SINENSIS	20	T.	III	7.13	pot	.25	.50				1.00
	Newly introduced; splendid autumn colors ...					sack						1.50
*!	PITHECOLOBIUM GUADELUPENSE				0.13	can	.50					
	For foliage and fodder					pot						
*!dSAMAN	30	T.	III	0.7.13	pot	.50					
	Trop. Am.—Rain-tree; rapid growth, dense											
	shade; good fodder; exceedingly desirable											

I.	II. BOTANICAL NAME.	III. Height	IV. Char.	V. Color	VI. Useful for	VII. What in	VIII. Small	IX. 1-2ft.	X. 2-3ft.	XI. 3-4ft.	XII. 4-6ft.	XIII. 6-8ft.	
*!	PITECOCTINEUM BUCCINATORIUM Mexico—Strong grower, good color and free bloomer	60	Cl.	III	2.9	pot can		.50					
*!	CLEMATIDINUM Uruguay—Quick, everblooming; light foliage	40	Cl.	I		pot tub pot		.50					
*!	CYNANCHOIDES A new introduction		Cl.			pot		.50					
*	MURICATUM Mexico—Flowers light yellow, mostly in summer	40	Cl.	IV	4	pot can		.35	.50				
	PITTIOSPORUM CRASSIFOLIUM N. Zealand, Karo—Hardy, grey foliage, upright habit	18	S.		3.5.6.14	pot ball can					.75 1.00	1.25	
	EUGENOIDES N. Zealand—Tarata. Light foliage, fine for hedges	30	T.S		3.13.14	pot ball can		.50	1.00	1.50			
!	HETROPHYLLUM S. Africa—Half-trailing, leaves small	8	S.Cr.		14	pot	.35	.50					
!	PHYLLYRAEOIDES Australia deserts—Like a weeping willow	20	T.	IV	4.13	pot ball can		.50	1.00		1.00 1.50	1.50 2.00	
*!	RHOMBIFOLIUM Queensland Pittosporum—A mass of yellow berries or white bloom	20	S.T	I	2.7.13	pot ball can		.35	.50 .75	1.00			
	TENUIFOLIUM New Zealand—Tawhiwhi. Symmetrical growth	18	S.	I	3.13.14	pot ball can			.25 .75	1.00	1.25	1.25	
	TOBIRA China—Dark green; winterflowering; compact	15	S.	I	3.5.11.14	pot ball can	.25			1.50			
	TOBIRA VARIEGATA A variegated form; very effective	15	S.	I	3.13.14	pot ball can		.35	.75	1.00	1.50		
	UNDULATUM Victorian Box; highly desirable	30	S.T	I	3.7.11.13	pot ball can box		.25			1.00 .75	2.00 1.50	2.50
!	VIRIDIFLORUM S. Africa—Dense, round-headed; clean	20	S.T		3.11.13	pot can			1.00		2.00		
!	PLEROMA SPLENDENS Brazil—Hardy, everblooming, deep blue flowers	5	S.	V	2.8	pot		.75					
	PLUMBAGO CAPENSIS S. Africa—Very satisfactory	10	S.	V	3.14	pot can	.25	.35					
	ALBA With pure white flowers	10	S.	I	3.14	pot can	.25			1.00			
d	LARPENTAE China—Low, spreading, flowers indigo blue	2	H.	V	12.14	pot sack	.25						
	PODOCARPUS MACROPHYLLA Japan—Neat pink-like shrub	10	S.		8.13	can	.10		1.00				
x*!	POGOSTEMON HEYNEANUS India—Patchouli plant	3	H.	I	0.11	pot		.50					
xd!	POINCIANA REGIA Madagascar—Royal Poinciana; Flamboyant	30	T.S	III	2.13	pot		1.00					
*!	POLYGALA APOPETALA Lower Cal.—Tall, bushy, willowy; fls. purplish	3	S.	II	11.13.14	pot		.50					
	MYRTIFOLIA S. Africa—Floriferous and bright	5	S.	II	3.13.14	pot can	.25	.35	.75				
	POMELO (MARSH SEEDLESS) Polynesia—Grapefruit	20	T.	IV	1	can				1.75			
!*!	PONGAMIA GLABRA India—Handsome tree; flowers pink and white	20	T.	II	2.13	pot	1.00						
d	PRUNUS CAROLINIANA Carolina—Beautiful pyramidal tree	20	T.	II	7.13	pot can		.25			.75		
	ILICIFOLIUM California—Mountain Cherry	15	T.S	I	3.13.15	pot can	.25		.35				
	LAUROCERASUS English Laurel; handsome, tall shrub	12	S.	I	13.15	pot							
*	OCCIDENTALIS Santa Cruz Island—Tall and broadleaved	25	T.S	I	3.13.15	pot can		.35					
d	PISSARDI Dark red foliage; very effective	20	T.S	III	7.13.14	sack can							

Nothing can surpass our PITTIOSPORUM PHYLLOIDES.

I.	II. BOTANICAL NAME.	III. Height	IV. Char.	V. Color	VI. Useful for	VII. What in	VIII. Small	IX. 1-2ft.	X. 2-3 ft.	XI. 3-4 ft.	XII. 4-6 ft.	XIII. 6-8 ft.
 PUDDUM	25	T.	II	13.15	pot		.25				
	Himalaya—Hardy; fls. in Nov., fruits in April											
	PRIMULA CHINENSIS	1	H.	I	6.10	pot		.25				
	Chinese Primrose; winterbloomer											
	PROSOPIS JULIFLORA	25	S.	IV	3.4.6	pot	.25					
	California—Mesquit											
*!	PSIDIUM ARACA	12	S.		1.3	pot		.50				
	Brazil—Yellow Strawberry Guava; large fruit					can			1.25			
 CATTLEYANUM	12	S.		1.3	flat	.5					
	Brazil—Ordinary Strawberry Guava					ball			.75			
						pot		.25				
						can			1.00			
*! LUCIDUM	12	S.		1.3	pot		.25	.50			
	Brazil—Another yellow Guava of fine flavor					pot						
						can				1.00		
	PTERIS ADIANTODES	3	F.		8.10.14	pot		.25				
	Foliage like Maidenhair fern					ball		.15				
 ALBOLINEATA	2	F.		8.10.14	pot		.25				
	Striped with white					ball		.15				
 ARGYREA	2	F.		8.10.14	pot		.25				
	Narrow white stripe					ball		.15				
 FLABELLATA	2	F.		8.10.14	pot		.25				
	Very graceful; hardy.					ball		.15				
 SERRULATA	3	F.		8.10.14	pot		.25				
	China—One of the most satisfactory					ball		.15	.35			
 CRISTATA	3	F.		8.10.14	pot		.25				
	Curious cockscomblike formation at end of fronds					ball		.15				
 TREMULA	5	F.		8.10.14	pot		.35	.50			
	Australia—Quite tall, hardy and a general favorite					ball		.25	.50			
	PTYCHOSPERMA ALEXANDRAE	50	P.		2.13	ball				1.00		
	Queensland—Alexandra palm; like Seaforthea, but taller and more upright					box						
	PUERARIA THUMBERGIANA					pot		.25				
	Japan—Kudzu vine; tremendous grower											
d	PUNICA GRANATUM	15	S.	III	1.3.14	pot						
	S. Asia—Pomegranate					sack			.50			
						can			.75			
d ALBA	15	S.	I	1.3.14	pot		.25				
	A white flowered variety											
	QUERCUS AGRIFOLIA	60	T.		7.13	pot						
	California Live Oak					ball			.75			
						can						
 CHRYSOLEPIS	60	T.		7.13	pot			.35			
	California Goldenleaf Oak					can						
*d SUBER	60	T.		0.7.13	pot		.25				
	Mediterranean—Cork Oak											
	RANUNCULUS ASIATICUS	2	H.	All	8.14	100	1.00					
	Beautiful, many-colored, bulbous plants					doz.	.15					
*!	RAPHIOLEPIS INDICA	8	S.	II	3.13.14	pot	.25					
	S. China Indian Hawthorn; flws. loose panicles											
 JAPONICA	8	S.	I	3.13.14	pot	.25	.35				
	Japan—Leathery foliage, dwarf and compact					ball			.75			
						can			1.00			
	REINWARTIA TRIGYNA	3	S.	IV	12.14	pot	.25					
	India—Large flowers in great abundance											
	RHAMNUS PURSHIANA	10	S.		14.15	pot	.25	.35				
	California—Very effective when in berry											
 CROCEA	8	S.		3.10.15	pot	.25					
	Cal.—Dwarf, compact, small leaved, pretty											
	RHAPIS FLABELLIFORMIS	15	P.		8.10.13	pot						
	Japan—Bamboo palm, very graceful					tub						
d	RHODOTYPOS KERRIOIDES	12	S.	I	13.14	pot						
	Japan—Large white flowers					can						
*	RHODORHIZA FLORIDA	5	S.	I	13.14.15	pot	.25					
	Teneriffe—Flowers like Morningglory											
	RHUS INTEGRIFOLIUS	15	S.		3.5.15	pot	.25	.35				
	California—Makes dense low masses near sea											

Our GUAVAS (Psidium), in cans are large fruiting plants.

I.	II. BOTANICAL NAME.	III. Height	IV. Char.	V Color	VI. Useful for	VII. What in	VIII. Small	IX. 1-2 ft.	X. 2-3 ft.	XI. 3-4 ft.	XII. 4-6 ft.	XIII. 6-8 ft.
	RICHARDIA AFRICANA	4	H.	I	8.12.14	pot		.25				
	S. Afr'ca—Calla Lily					bulb	.10					
ELLIOTIANA	4	H.	IV	8.12.14	pot		.50				
	S. Africa—Golden Calla					bulb	.25					
!	RIVINA HUMILIS	4	H.	III	8.10	pot	.25	.35				
	S. Florida—Rouge plant; numerous red berries											
	ROCHEA FALCATA	4	L.	VII	4.9.13	pot	.35					
	Fleshy leaved plant with showy flowers											
	ROMNEYA COULTERI	10	S.	I	13.14.15	pot	.35					
	Matilijah Poppy					can						
!	RONDELETIA CORDATA	6	S.	II	13.14	pot	.50					
	Guatemala—Showy and desirable											
*!	ROSA GIGANTEA	60	Cl.	I	11.15	pot		1.00				
	Burmah—Fast grower; flowers like Cherokee					can			1.50			
LAEVIGATA	20	Cl.	I	3.15	ball			.50			
	China—Cherokee rose					sack			.25			
MOSCHATA	40	Cl.	I	11.15	pot		.50				
	Himalaya—Large, single flowers, large panicles					sack				1.00		
RUGOSA	10	S.	I	3.11.15	ball				2.00		
	Ch'na—Fine for rough hedges and masses					sack	.25					
SETIGERA	15	Cr.Cl	II	11.15	sack	.25					
	Michigan—Prairie rose; delicate shade of pink											
WICHURAIANA	15	Cr.	I	15	sack		.25				
	Japan—Handsome for covering walls, etc.											
	(All other Roses follow this price list.)											
	ROSMARINUS OFFICINALIS	8	S.	VI	0.3.14	pot	.35					
	Med'terranean—Rosemary											
d	RUBUS ROSAEFLORUS	6	S.	I	4.6.14.15	sack	.25					
	Very ornamental and hardy											
	RUSSELIA JUNCEA	4	H.	III	10.15.14	pot	.25	.35				
	Mexico—For rockeries											
	RYNCHOSIA MINIMA	15	Cl.	IV		pot	.25					
	W. Ind'es—Rampant grower; numerous flowers											
	SABAL ADANSONI	15	P.		2.13	ball		1.50	2.50			
	S. States—Dwarf Palm tree											
BLACKBURNIANA	40	P.		2.7.13	pot						
	W. Indies—Graceful, arching Fanpalm					can						
PALMETTO	40	P.		2.5.7.13	pot		1.00				
	S. States—Cabbage Palmetto					can						
!SCHWARTZII	20	P.		2.5.7.13	pot	1.00					
	S. Florida—Recently discovered; smooth trunk											
!	SALVIA ARBOREA	20	T.S	III	2.13	pot	.50					
	Like scarlet Sage; growing into quite a tree					can						
COCCINEA	5	H.	III	2.14	pot	.25		.75			
	Tall growing, long spikes; flowers near crimson					can						
GLOIRE DE STUTTGART	4	H.	III	2.14	pot	.25					
	An improved variety											
SPLENDENS	4	H.	III	2.14	pot	.25					
	Ordinary Scarlet Sage; a great bedder											
	SANTOLINA CHAMAECYPARISSIS	3	S.	IV	3.12	flat	1.00					
	Mediterr.—Lavender Cotton, Grey foliage					pot		.25				
	SAPONARIA OCYMIODES SPLENDENS	1	Cr.	II	8.14	pot	.25					
	Europe—Showy, low growing perennial											
	SAXIFRAGA SARMENTOSA	1	Cr.	I	8.10	pot	.25					
	China—Strawberry Geranium, for rockeries											
	SCHINUS MOLLE	40	T.	III	4.7.13	pot		.25	.35			
	Peru—Pepper tree					can				.75		
THEREBINTHIFOLIUS	40	T.		4.7.13	sack					.75	
	Brazilian Pepper Tree; flat, spreading head					pot						
*!	SCHIZOLOBIUM EXCELSUM	60	T.	IV	2.7.13	pot		1.50				
	Large Brazilian tree with fern like leaves											
*!	SCHOTIA BRACHYPETALA	25	T.S	III	2.13.14	pot		1.00				
	Natal—Large clusters of deep crimson flwrs.											
*!LATIFOLIA	20	S.	II	2.13.14	pot	.50	1.00				
	Natal—A dense mass of handsome foliage											
*!SPECIOSA	20	S.	III	2.13.14	pot		1.00				
	S. Africa—Handsome finely divided foliage											

We never had better CHEROKEE ROSES (R. Laevigata) than now.

I.	II. BOTANICAL NAME.	III. Height	IV. Char.	V. Color	VI. Useful for	VII. What in	VIII. Small	IX. 1-2 ft.	X. 2-3 ft.	XI. 3-4 ft.	XII. 4-6 ft.	XIII. 6-8 ft.
!	SCHUBERTIA GRANDIFLORA	40	Cl.	I	2.11	pot		.75				
	S. Brazil—Waxy, frag't, Stephanotislike flowers											
	SCIRPUS CERNUUS	1	B.		8.12	pot	.25					
	Calif.—Drooping, green grass; for rockeries											
	SEAFORTHA ELEGANS	60	P.		2.7.8.13	pot	.25					
	Australia—A splendid street palm					ball tub bulb				2.50		\$15
	SECHIUM EDULE	20	Cl.		1		.25					
	Mexico—Rampant grower with squashlike fruit											
	SENECIO KAEMPFERI AUREA MAC.	4	H.	IV	10.14	pot	.25					
	Leopard plant											
	MACROGLOSSIS	8	Cr.		8	pot	.25					
	A neat little climber											
	PETASITIS	15	S.	IV	2.13.14	pot		.50				
	China—Broad, downy foliage; impressive plant					can			1.00			
	SEQUOIA GIGANTEA	200	T.		7.13	pot		.50				
	California Big Tree					can					1.00	
	SEMPERVIRENS	100	T.		7.13	pot						
	Redwood					can				1.25		2.50
*!	SERJANIA FUSCIFOLIA	40	Cl.	I	11.13	pot		.50				
	Paraguay—Elegant foliage; young tips bronze											
	SITOLBIUM CICUTARIUM	10	F.		8.10.13	pot		.75				
	A handsome giant fern											
!	SOLANDRA GRANDIFLORA	20	Cl.	IV	2.13	pot		.50				
	Tropical Am.—Climbing Datura; 6-in. flowers											
	SOLANUM AVICULARE	10	S.	V	14	pot		.35				
	Australia—Numerous flowers; showy					can						
	CAPSICASTRUM	4	S.	III	8.13.14	pot	.25					
	Jerusalem Cherry											
	ROBUSTUM	10	S.		2.13	pot		.50				
	A splendid subtropical foliage plant					can			.75			
*!	GUATEMALENSE	10	S.	V	1.13.14	pot		.50				
	Melon shrub; fruit really delicious					can						
!	SPEC. FROM LIBERIA	15	S.		2.13	pot		.35				
	Very showy clusters of many colored berries					ball					1.00	
	MARGINATUM	10	S.	I	2.14	pot						
	Foliage nearly white underneath					can						
	RANTONETTI	15	S.Cr.		14.15	pot		.35				
	Paraguay—Rambling, floriferous; showy					can						
	SEAFORTHEANUM	10	Cl.	V		pot		.50				
	Brazil—Loose, pendant bunches skyblue flws.											
	WARCIWICZI	15	S.		2.13	pot	.25					
	An enormous grower of tropical effect					can			.75			
	SOLYA HETEROPHYLLA	20	S.Cl.	V	10	pot	.35	.50				
	Tasmania—Small, bellshaped flwrs., profus'on					can						
!	SOPHORA TETRAPTERA	40	T.S	IV	4.13	pot		.50				
	N. Zealand—Beautiful tree, with small foliage											
	SPARMANNIA AFRICANA	15	S.	I	13.14	pot		.35				
	S. Africa—Dense mass of broad leaves					can						
	SPARTIUM JUNCEUM	15	S.	IV	3.9.14	pot		.25				
	The well known Spanish Broom					can						
*!	SPHAERALCEA VITIFOLIA	15	S.	III	3.13.14	pot		.50				
	Mexico—Hibiscuslike foliage; flows. winecolor					can			1.50			
d	SPIRAEA REEVESI	10	S.	I	3.13.14	sack					.50	
	Bridal wreath					can					1.00	
	STATICE ARBOREA	5	S.	V	5.12.14	pot		.25				
	With large leaves and tall growing											
	MACROPHYLLA	2	H.	V	5.12.14	pot		.25				
	Immense panicles of deep lavender flowers											
!	STAUNTONIA HEXAPHYLLA	20	Cl.	I		pot		1.00				
	Japan—Aralia like foliage; scarlet berries											
	STEPHANOTIS FLORIBUNDA	20	Cl.	I	11	pot	.25	.75				
	Madagascar—Handsome, fragrant climber											
	STERCULEA ACERIFOLIA	20	T.	III	2.7.13	pot		.35	.50			
	Australia—Flame tree; a blaze of scarlet					can					1.00	
*!	BIDWELLI	30	T.	III	2.7.13	pot						
	Australia—Remarkably handsome foliage					can				1.50		
*!	DISCOLOR					pot						
	Australia—Late introduction very promising					can						
	DIVERSIFOLIA	40	T.	I	7.13	pot		.25				
	Austr.—Bottle tree—Much used for street tree					ball can				.75	1.00	

SOLANUM GUATEMALENSE, the best plant on this page.

I.	II. BOTANICAL NAME.	III. Height	IV. Char.	V Color	VI. Useful for	VII. What in	VIII. Small	IX. 1-2 ft.	X. 2-3 ft.	XI. 3-4 ft.	XII. 4-6 ft.	XIII. 6-8 ft.
*!	GREGORI A splend'd tree with handsome flowers	100	T.	II	7.13	pot ball can pot						
!	STIGMAPHYLLON CILIATUM Brazil—Curious, Orchid-like flowers	15	Cl.	IV	2	pot			.75			
*!	LITORALE River Plata—With larger leaves.	30	Cl.	IV	2	pot			1.00			
	STOKESIA CYANEA Cornflower—Aster; pretty perennial for border	2	H.	V	12.14	pot sack	.25 .10					
!	STRELITZIA AUGUSTA S. Africa—Not unlike the Travelers tree	18	L.	I	2.13	pot can			2.50			
	NICOLAI S. Africa—Flowers larger; partially blue	18	L.	I	2.13	pot can			2.50			
	REGINAE S. Africa—Bird of Paradise flower	6	L.	V.I	2.12.14	can				2.50		
	STREPTOSOLEN JAMESONI Colombia—Bright, showy, everblooming shrub	12	S.Cl.	VII	14	pot can	.25	.35				
*	STROBILANTHUS DYERIANUS Burma—Variegated iridescent tints, blue, lilac	5	L.	III	2.8.10.14	pot tub		.25				
	SUTHERLANDIA GRANDIFLORA S. Africa—Bladder Senna; flowers scarlet	10	S.	III	9.14	pot can	.25					
	SWAINSONIA GALEGAEFOLIA Austral'a—Nearly continuous bloomer	10	S.	II	3.14	pot can	.25					
	ALBIFLORA Austr.—Flowers pure white in great profusion	10	S.	I	3.14	pot can	.25		.35			.75
!	TACSONIA VON VOLEXMI Colombia—Large, wine-red flowers	20	Cl.	III	2	pot can		.25	.50			
	MOLLISSIMA Andes—Flowers 3 inches across; rose-color	20	Cl.	II	2	pot can		.25	.35			
d	TAMARIX PLUMOSA Japan—Feathery foliage; a mass of pink	15	T.S		4.5.6	pot sack	.25				.35	
	TAXUS BACCATA S. Europe and Asia—Well known Yew tree	40	T.S		7.13.14	ball		1.25				
	FASTIGIATA Irish Yew; like a miniature Italian Cypress	15	T.S		7.13	ball		.75	3.00			
d	TAXODIUM DISTICHUM So. States—Bald Cypress; for damp places	200	T.		0.7.13	pot can	.25					
*!	MUCRONATUM Mexico—Montezuma Cypress; feathery foliage	200	T.		0.7.13	pot ball can	.25	.50			1.00 1.50	
	TECOMA AUSTRALIS Austr.—Wonga-Wonga vine; vigorous, glossy	20	Cl.	I		pot can	.25				1.25	
	CAPENSIS Cape Honeysuckle. Climbing shrub, everbloom.	20	S.Cl.	III	3.14	pot can	.25	.35		.75		
*!	CHRYSANTHA Caracas—Fine evergreen tree; 2-inch flowers	20	T.	IV	2.7.13	pot	.50					
	JASMINOIDES ALBA Bowerplant of Austr.—Campanula-like, white	15	Cl.	I		pot can		.50		1.50		
	JASMINOIDES The same flowers with rosy-pink throat	15	Cl.	II	11	pot can		.50		1.50		
*!	PENTHANTHA A newly introduced and very promising variety					pot	.50					
*!	REGINAE SABAE Rhodesia—New, vigorous, winterblooming	30	Cl.	II		pot		1.00				
	RICASOLIANA S. Africa—Great grower; flowers 2 inches	30	C.	II		pot can			.25 .75			
*!	SMITHII Hybrid—Immense bunches of yellow flowers	20	S.T	IV	3.14	pot ball can		.35		.75 1.00		
	STANS Gulf Coast—Yellow Elder; charming shrub	10	S.	IV	3.6.14	pot can		.25				
	TECOMARIA CAPENSE A new introduction					pot	.25					
	TELANTHERA BETTZICHIANA Better known as Alternanthera; bright border	1	L.	III	12.14	pot flat	.10 .5					
	AUREA Yellow variegated foliage	1	L.	IV	12.14	pot flat	.10 .5					
	TEUCRIUM FRUTICANS Europe—Grey foliage, with paleblue flowers	10	S.Cr.	VI	13.14.15	pot can		.25				

TAXODIUM MUCRONATUM, the best large tree.

I.	II. BOTANICAL NAME.	III. Height	IV. Char.	V. Color	VI. Useful for	VII. What in	VIII. Small	IX. 1-2ft.	X. 2-3 ft.	XI. 3-4 ft.	XII. 4-6 ft	XIII. 6-8 ft.
!	THEVETIA NERIIFOLIA	15	S.	IV	13	pot		.75				
	Trop. America—Yellow Oleander; beautiful..											
	THUYA OCCIDENTALIS AUREA	10	S.	IV	12.13	ball		1.00				
	U. S. A.—Yellow Arbor Vitae					can		1.25				
OCCIDENTALIS	15	S.		12.13	ball		1.00				
	Arbor Vitae					can		1.25				
	TIBOUCHINA SEMIDECANDRA	6	S.	V	2.8.13	pot	.50	.75				
	Brazil—Flowers often 5 inches across											
	TORENIA FOURNIERI	3	H.	V	8.14	pot						
	Trop. Asia—Used in Florida as sub. for Pansy											
	TRACHELOSPERMUM JASMINOIDES	10	S.Cl.	I	14.11	pot	.25	.50				
	China—(Rynchospermum) Deep green foliage											
	TRACHYCARPUS EXCELSUS	20	P.		2.7.13	ball		.50				
	China—Windmill palm; one of the hardest					tub						
	TRADESCENTIA BICOLOR	3	L.	III	2.8.10	pot		.50				10.
	Handsome, winecolored foliage plant											
FLUMINENSIS	6	Cr.	III	2.10.14	pot	.25					
	Brazil—Wandering Jew											
	TRISTANIA CONFERTA	80	T.	I	7.13	pot	.25	.35	.50			
	Queensland—Handsome shade tree, for avenues					can						
	TRITOMA UVARIA	4	H.	III	2.12.14	sack	.25					1.00
	S. Africa—Red hot poker plant											
	UMBELLULARIA CALIFORNICA	80	T.S		7.13.15	pot	.25	.35	.50			
	California Laurel					can						
	VERBENA, SCARLET	1	H.Cr	III	12.14	flat	.5					
PINK	1	H.Cr	II	12.14	pot	.10					
WHITE	1	H.Cr	I	12.14	flat	.5					
	VERONICA DWARF BLUE	4	S.	V	5.12.14	pot	.25	.35				
	Splendid low growing floriferous shrub					can						
IMPERIALIS	6	S.	III	5.12.14	pot	.25	.35	.50			
	Taller growing; very satisfactory					can						
LAVENDER WHITE	6	S.	VI	5.12.14	pot	.25	.35				
	Fine for shrubby border					can						
SPECIOSA	6	S.	VI	3.5.14	pot	.25	.35				
	A great favorite; will get along anywhere ..					can			.75			
VARIEGATA	6	S.	I	3.5.14	pot	.25	.35				
	Makes a bright hedge					can			.75			
TRAVERSI	4	S.	I	3.5.12	pot	.25	.35				
	Dwarf, compact, pure white flowers					can						
d	VIBURNUM OPULUS	10	S.	I	14	sack			.40	.50		
	The well-known Snowball					can						
TINUS	10	S.	I	3.14	pot	.25					
	Better known as Laurustinus; fine for hedges					ball			.75			
ROTUNDIFOLIUS					can				1.00		
	A round leaved form					pot	.25					
d	VITIS AESTIVALIS	20	Cl.			pot			.35			
	E. States—Pigeon Grape; strong, tall-climbing											
*!ANTARTICA	20	Cl.			pot	.25					
	Austr.—Vigorous; suitable for rocks and walls					can				1.00		
*CAPENSIS	40	Cl.			pot	.25	.35	.50			
	S. Afr.—Evergreen Grape; unsurpassed beauty					can						
*!PTEROPHORA	80	Cl.			pot			.50			
	Brazil—Very curious, quickgrowing tall vine					can						
*!RUTILANS	40	Cl.			pot		.35	.50			
	Argentina—Red adventitious roots					can						
	WASHINGTONIA SONORAE	100	P.		2.7.13	ball		.75	1.00	2.00	3.00	
	Common California Fanpalm					can			1.50			
	WATSONIA ARDERNEI	6	H.	I	14	100	3.00					
	S. Africa—Tall-growing; Gladiolus-like flwrs.					doz.	.50					
	WIGANDIA CARACASANA	14	S.	V	2.13	pot		.25				
	Venezuela—Large leaved, quick-growing ..					can			.35			
dWISTARIA MULTIJUGA ALBA	20	Cl.	I		can				1.00		
	Japanese white-flowered Wistaria											
PURPLE	20	Cl.	V		can				1.00		

VITIS CAPENSIS positively the best vine in the catalog.

I.	II. BOTANICAL NAME.	III. Height	IV. Char.	V Color	VI. Useful for	VII. What in	VIII. Small	IX. 1-2 ft.	X. 2-3 ft.	XI. 3-4 ft.	XII. 4-6 ft.	XIII. 6-8 ft.
	YUCCA ALOEFOLIA	20	L.	I	2.7.13	pot	.25					
	YUCCA ALOEFOLIA, VAR.	20	L.	I	2.7.13	pot		.75	1.00			
	Stiff, upright growing; very effective					can						
GUATEMALENSE	20	L.	I	2.7.13	pot		1.00				
	An enormous plant; makes a splendid specimen					can						
	ZAUSCHNERIA CALIFORNICA	4	H.	III	14.15	pot	.25					
	California Fuchsia											

DESIGN AND PLANTING. Special attention is called to our well-equipped Landscape Department. We are prepared to draw plans or give suggestions for planting new places or improving old ones. Our literature on the subject will be mailed when asked for. We have several expert landscape gardeners in our employ and their services are at the disposal of our customers. Our employes being naturally interested in your success with our plants, can be depended upon to do their utmost to secure this.

List of Roses.

- AGRIPPINA**—Bright red, free bloomer, always in good foliage; one of the best for hedges or beds. Ball, 50c; bare root, 25c.
- ANNA MULLER**—The New Pink Baby Rambler. The shining brilliant pink flowers are produced in great profusion, in large clusters, from June until late in the fall. Each individual floret measures two inches in diameter. The petals are twisted, making a charming effect. Can, 50c; ball, 50c; bare root, 25c.
- BARDOU JOB**—Climber; the foliage is large and leathery, the flower very large and resembles a saucer in shape and are semi-double; color deepest, richest, velvety crimson. Can, 50c.
- BEAUTY OF GLAZENWOOD; SAN RAFAEL ROSE; GOLD OF OPHIR**—Coppery yellow. Can, 50c.
- BESSIE BROWN**—A beautiful flesh-pink Rose, shading to French white. The buds are beautiful in the extreme and the fully expanded flowers are of noble proportions, combining great depth and fullness. It is a vigorous, healthy grower, very free bloomer, splendid foliage, and long, straight stems holding the flowers erect. The fragrance is deliciously sweet. It is hardy and everblooming. Can, 50c; bare root, 25c.
- BRIDE**—White tinged with yellow; beautiful bud. Can, 50c; bare root, 25c.
- BRIDESMAID**—Bright pink, fine and full. Can, 50c; bare root, 25c.
- BURBANK (Bourbon)**—Color cherry-rose; a great bloomer. Can, 50c.
- CLARA WATSON (Tea)**—Salmon-pink; very fine. Can, 50c; bare root, 25c.
- ing a charming effect. Can, 50c; ball, 50c; bare root, 25c.
- CHEROKEE**—Double. Ball, 50c; bare root, 25c.
- CHEROKEE**—Single. Can, 50c; ball, 50c; bare root 25c.
- CHEROKEE**—Pink; like the ordinary well known Cherokee, but a clear pink; very fine. Can, 50c.
- CLIMBING CECILE BRUNNER**—Rosy pink, with cream white. A most vigorous grower. Can, 50c; ball, 50c; bare root, 25c.
- CLIMBING PAPA GONTIER**—This new climbing rose is a sport of the well known Tea Rose. Papa Gontier is a strong climber and is covered the whole season with the most elegant and fine fiery red crimson flower of a long pointed form, borne on long stiff stem. The foliage is large and leathery and of great substance. Bare root, 25c; ball, 50c.
- CLIMBING KAISERIN (Mrs. Robert Perry)**—A strong, rapid climber without a weak spot, and throwing up shoots 10 to 15 feet high in a single season; the flowers are grand, of pure white color and of great substance, and are produced on long stiff stems. Can, 50c; bare root, 25c.
- CLIMBING MME. C. TESTOUT**—An exact counterpart of Mme. C. Testout, except that it is a very vigorous climber. Can, 50c.
- CLIMBING PERLE DES JARDINS**—Golden yellow, buds large and very fragrant. A favorite. Can, 50c.
- CLIMBING WOOTON**—This is a sport of that famous rose "Souv de Wooton," and is identical with it, except that it is a strong climber; the flowers are large, full and regular, with thick leathery petals, and are bright magenta-red, passing to violet crimson. Can, 50c.
- CLOTH OF GOLD (Chromatella)**—Yellow, large and very double; one of the best. BaBl1, 50c; bare root, 25c.
- DOROTHY PERKINS**—A hardy climbing Rose of American origin which has become a standard sort. The color is a beautiful, clear shell-pink; it blooms in trusses of from ten to thirty, each flower considerably over one inch in diameter, the stem to the truss being quite long, thus making them available for cutting and interior decoration. The flowers are fragrant and last a long time in good condition. Healthy, hardy and handsome. Ball, 50c; bare root, 25c.
- DR. GRILL**—Light rose, with coppery yellow center; beautiful in bud. Can, 50c.
- DUTCHESS DE BRABANT**—Rosy flesh, globular form; one of the best. Bare root, 25c; ball, 50c.
- FRANCISCA KRUGER**—Coppery yellow, shaded with peach; fine. Can, 50c; bare root, 25c.
- FRANZ DEEGEN**—Rich yellow, shading to arrange in the center of the flower, which is of medium size; very sweet-scented and effective. Ball, 50c; bare root, 25c.
- FRAU KARL DRUSCHKI**—This magnificent variety has taken first prizes at all the great flower shows of Europe, and is undoubtedly one of the grandest hardest, pure white Roses ever introduced. Makes splendid buds and immense flowers, four to five inches across, perfectly double and delightfully fragrant, large thick petals, very durable and handsome. Bright, shining green leaves, elegantly veined; a healthy vigorous grower, entirely hardy and a constant and abundant bloomer. Recommended by the leading Rose growers of Europe as the most beautiful and satisfactory snow-white perpetual Rose ever seen. Ball, 50c; bare root, 25c.
- FISHER HOLMES**—Brilliant crimson; the improved "Jacqueminot." Can, 50c.

- GLORIE DE ROSEMAINES—Can, 50c.
- GENERAL McARTHUR—A new Rose that is already a fixture in many gardens. Color brilliant scarlet, a very bright-colored Rose of good size and double; very free blooming and fragrant. Many claim for this that it will rank with Helen Gould as a red Rose. It has certainly shown up well with us the past two seasons. We advise trying this Rose. Can, 50c; ball, 50c; bare root, 25c.
- GRUSS AN TEPLITZ—Is a perfect sheet of rich crimson all summer; it is the richest, velvety crimson, shaded with brightest scarlet. Bare root, 25c; ball, 50c; can, 50c.
- KAISERIN AUGUSTA VICTORIA—Strong grower; producing grand pure-white flowers. Bare root, 25c; ball, 50c.
- KILLARNEY—In color it is especially beautiful, being an exquisite shade of deep shell-pink, while the flowers are enormous in size, the petals being frequently two and one-half inches deep. Can, 50c; ball, 50c; bare root, 25c.
- LA FRANCE—Deep silvery rose, large and full; very fragrant. Bare root, 25c; ball, 50c.
- LAMARQUE—Pure white, in large clusters. Bare root, 25c; can, 50c; ball, 50c.
- LADY BATTERSEA (The Red Kaiserin)—In the English gardens this Rose is very popular; its novelty and charm lying in its unusual coloring and its long and graceful buds. Called by many the Red Kaiserin. The buds are full and pointed and of a beautiful cherry-crimson, permeated with an orange shade. We recommend this as one of the easiest and best. Can, 50c.
- MME. CHATENAY—Grand pink forcing variety, with long stiff stems and pointed buds of very bright color. Can, 50c; ball, 50c; bare root, 25c.
- MME. CAROLINE TESTOUT—A magnificent H. T. of the very loveliest shades of pink. Bare root, 25c; ball, 50c.
- MAD ALFRED CARRIER—Pink blush; vigorous grower. Ball, 50c; bare root, 25c.
- MAD. C. BRUNNER—Ball, 50c; can, 50c; bare root, 25c.
- MAMAN COCHET—A magnificent pink rose of Mermet type, and the grandest of outdoor bedders in pink, making an enormous growth in one season. Of the largest size, and one of the most vigorous and beautiful growers in the Tea family. Color, very bright rose, with shadings of yellow at the center. Ball, 50c; bare root, 25c; can, 50c.
- MAMAN COCHET, WHITE—This American sport of the grand French variety has proved the very best of white bedders. Wherever outdoor roses are grown, White Maman Cochet is a favorite. It is extremely large, rounded and full. Ball, 50c; bare root, 25c; can, 50c.
- MARIE VAN HOUTTE—Color light lemon-yellow with a distinct line of pink, changing to deep red; beautiful. Can, 50c; ball, 50c; bare root, 25c.
- MAGNA CHARTA—Bright deep pink, very large and fragrant. A grand and very popular garden Rose. Ball, 50c; bare root, 25c.
- McCARTNEY—Long in bloom, retains its close, shiny foliage. Ball, 50c; bare root, 25c.
- MARQUIS DE QUERHONTE (Tea)—A fine yellow Rose; very popular in California. Can, 50c; bare root, 25c.
- MARECHAL NEIL—The world-renowned yellow. Bare root, 25c; can, 50c.
- PAPA GONTIER—Rosy crimson; buds of extra large size; one of the best roses for the garden. Can, 50c; ball, 50c; bare root, 25c.
- PAUL NEYRON—Probably the largest of all Roses; color, clear dark pink, shaded carmine. Form of flowers, bold and handsome; very fragrant. Ball, 50c; bare root, 25c.
- PERLE DES JARDINS—Flower deep canary yellow, of great substance, and one of the best. Can, 50c; ball, 50c; bare root, 25c.
- PERLE VON GODESBERG—This is identical with Kaiserin Augusta Victoria, the peer of any Rose, except in color, being a pure white with a yellow center. Exquisitely beautiful. Can, 50c.
- RAINBOW (Tea)—Carmine, striped with crimson. Can, 50c; ball, 50c; bare root, 25c.
- RAMBLER, YELLOW—Ball, 50c; bare root, 25c.
- RAMBLER, PINK—Ball, 50c; bare root, 25c.
- The Yellow and Pink Ramblers do splendidly here. The Crimson and White, though beautiful when in bloom, are troubled with mildew in some localities.
- RAMBLER, CRIMSON—Too well known to require description. Everyone is familiar with its large clusters of crimson flowers. Ball, 50c; bare root, 25c.
- REINE MARIE HENRIETTE—The grandest of all red climbers; large full flowers. Can, 50c; ball, 50c; bare root, 25c.
- REVE D'OR CLIMBING SAFRANO—Buff apricot yellow; very free blooming. Bare root, 25c.
- RICHMOND—This grand Rose took the gold prize at the World's Fair at St. Louis for the best new Rose exhibited. In color it is a deep, rich, velvety crimson, both buds and flowers are large and handsome. Ball, 50c; bare root, 25c.
- ROSA RUGOSA ALBA—Large fragrant single flowers, followed by brilliant red seed berries in autumn. Ball, 50c; bare root, 25c.
- SOUV. D'UN AMI—Splendid pink; free-blooming. Can, 50c.
- ROSA MOSCHATA—An introduction from India, of astonishing growth; in spring covered with immense bunches of single white fragrant flowers; a more vigorous grower than any climber yet introduced, with the exception of the following: Large plants, \$1.00 each; smaller, 50c.
- ROSA GIGANTEA—From the Himalayas; a Rose like the Cherokee, but better, larger, earlier. It grows like the Cherokee, but more vigorous, holds its foliage better and while possessing every charm of the Cherokee, it is superior in every respect. Unfortunately, we have not as yet found a way to grow this Rose from cuttings, so we offer only seedlings at \$1.00 each.
- TAUSENDSCHON, OR "THOUSAND BEAUTIES"—A beautiful, new climbing Rose which has leaped into popularity by its inherent merit and beauty. The name "Thousand Beauties" is very appropriate and refers particularly to the wonderful variety of coloring found on any one plant. The flowers are soft pink at first, but as they age the most beautiful shades of carmine rose, cerise, blush, soft white, with a gleam of light yellow showing, soft crimson and intermediate tints are found, a combination of charming coloring which is bewildering. It is a rampant grower, very healthy with magnificent foliage. Can, 50c; bare root, 25c.
- ULRICH BRUNNER—Bright cerise red; flowers large and full, of a globular form. Ball, 50c; bare root, 25c.
- VISCOUNTESS OF FOLKSTONE—Delicately tinted flesh, almost white, lustrous as satin. Can, 50c; ball, 50c; bare root, 25c.
- WM. ALLEN RICHARDSON—Deep orange yellow. Can, 50c; bare root, 25c.
- WICHURAIANA—Beautiful fragrant, single, pure-white flowers, with yellow stamens, followed in fall with bright red berries. Ball, 50c; bare root, 25c.
- WHITE AND YELLOW BANKSIA—Can, 50c; ball, 50c; bare root, 25c.

List of Common Names.

- Abyssinian Banana—*Musa ensete*.
 African Lily—*Agapanthus*.
 Ahuacate—*Persea*.
 Akee-tree—*Cupania*.
 Aleppo-pine—*Pinus Halesensis*.
 Alexandra-palm—*Archontophoenix*.
 Algaroba—*Ceratonía* or *Caesalpinia*.
 Alligator-pear—*Persea*.
 Amole—*Chlorogalum*.
 Anagua—*Erethia elliptica*.
 Angels trumpet—*Datura*.
 Applescented-gum—*Euc. Stuartiana*.
 Apricot-palm—*Cocos eriospatha*.
 Artichoke—*Cynara*.
 Artillery plant—*Pilea*.
 Asphodel—*Asphodelum*.
 Austr. Blackwood—*Ac. melanoxylon*.
 Austr. Box—*Euc. hemiphloia*.
 Austr. Fanpalm—*Livistona australis*.
 Austr. laurel—*Corynocarpus*.
 Austr. nut—*Macadamia*.
 Austr. pea—*Dolichos*.
 Austr. Tea—*Leptospermum*.
 Avocado—*Persea*.
 Baby's breath—*Gypsophila*.
 Balloonvine—*Cardiospermum*.
 Bamboo-palm—*Chamaedora*.
 Banana—*Musa*.
 Banana-shrub—*Michelia fuscata*.
 Banyantree—*Ficus Benghalensis*.
 Barbados cherry—*Malpighia*.
 Barbados gooseberry—*Pereskia*.
 Barbados Pride—*Caesalpinia pulcherrima*.
 Barberry—*Berberis*.
 Barberton daisy—*Gerbera*.
 Barometz—*Cibotium*.
 Bastard Box—*Euc. goniocalyx*.
 Baytree—*Laurus*.
 Bears breech—*Acanthus*.
 Beaucarnia—*Nolina*.
 Beefwood—*Casuarina*.
 Belladonna lily—*Amaryllis*.
 Bellflower—*Campanula*.
 Bilimbi—*Averrhoa*.
 Bird of Paradise—*Caesalpinia Gilliesi*.
 Black bamboo—*Phyllostachys nigra*.
 Blackbutt—*Euc. pilularis*.
 Black Wattle—*Acacia mollissima*.
 Blackwood acacia—*Ac. melanoxylon*.
 Bleeding heart—*Dicentra*.
 Bloodlily—*Haemanthus*.
 Bloodwood—*Euc. corymbosa*.
 Blue daisy—*Agatheia*.
 Bluegum—*Euc. globulus*.
 Blue-leaved Wattle—*Ac. Cyanophylla*.
 Bluepalm—*Erythea armata*.
 Boston fern—*Nephrolepis*.
 Boston Ivy—*Amelopsis*.
 Bottlebrush—*Callistemon* and *Metrosideros*.
 Boxthorn—*Lycium*.
 Boxtree—*Buxus*.
 Brazilnut—*Bertholletia*.
 Breadfruit—*Artocarpus*.
 Breadnut—*Brosimum*.
 Breath of Heaven—*Adenandra*.
 Bridal wreath—*Spiraea*.
 Broom—*Cytisus* and *Spartium*.
 Buckthorn—*Rhamnus*.
 Bull Bay—*Magnolia grandiflora*.
 Bullocks heart—*Anona reticulata*.
 Bunya-bunya—*Araucaria Bidwelli*.
 Burning bush—*Craetagus* and *Euonymus*.
 Butterfly lily—*Hedychium*.
 Butterfly pea—*Clitoria ternatea*.
 Cajaput tree—*Melaleuca leucadendron*.
 Calabash tree—*Crescentia*.
 California holly—*Heteromeles*.
 California laurel—*Umbellularia*.
 Calla—*Richardia*.
 Camphortree—*Cinnamomum*.
 Campsidium—*Tecoma australis*.
 Candelnut—*Aleurites*.
 Cane—*Arundinaria macrosperma*.
 Canterbury bells—*Campanula medium*.
 Cape jasmine—*Gardenia*.
 Cape Pittosporum—*Pitt. viridiflorum*.
 Capulin—*Prunus capuli*.
 Caperbush—*Capparis*.
 Caracol—*Pbaseolus*.
 Carambola—*Averhoa*.
 Caraunda—*Carissa carandas*.
 Cardamon—*Amomum*.
 Cariso—*Elymus*.
 Carob—*Ceratonía*.
 Cashewnut—*Anacardium*.
 Cassava—*Manihot*.
 Cassie—*Acacia Farnesiana*.
 Castanea—*Bertholletia*.
 Catalina cherry—*Prunus occidentalis*.
 Cavan—*Acacia cavenia*.
 Ceara rubber—*Manihot*.
 Cedar—*Cedrus*.
 Cedarwood—*Cedrela*.
 Centuryplant—*Agave*.
 Ceriman—*Monstera*.
 Chelem—*Agave rigida*.
 Cherimoyer—*Anona*.
 Christmas berry—*Heteromeles*.
 Christmas cactus—*Epiphyllum*.
 Christ's thorn—*Carissa carandas*.
 Chilean guava—*Myrtus ugni*.
 Chili Jasmine—*Mandevilla*.
 Chilean nut—*Guevina avellana*.
 Chinese Fanpalm—*Livistona sinensis*.
 Chinese potato—*Dioscorea*.
 Cider gum—*Euc. Gunni*.
 Cinnamonvine—*Dioscorea*.
 Circassian bean—*Adenanthera*.
 Climbing lily—*Gloriosa*.
 Cluster fig—*Ficus glomerata*.
 Columbine—*Aquilegia*.
 Coneflower—*Rudebeckia*.
 Coffeeberry—*Rhamnus*.
 Coquitopalm—*Jubaea*.
 Coral bells—*Heuchera*.
 Coral gem—*Lotus Bertholleti*.
 Coraltree—*Erythrina*.
 Corkoak—*Quercus suber*.
 Corresol—*Anona muricata*.
 Cotton—*Gossypium*.
 Counciltree—*Ficus altissima*.
 Cowslip—*Primula*.
 Crabcactus—*Epiphyllum*.
 Crab's eye vine—*Abrus*.
 Creeping fig—*Ficus repens*.
 Crimson bells—*Heuchera*.
 Crimson eye—*Hibiscus*.
 Crimson flowered gum—*Euc. ficifolia*.
 Crape myrtle—*Lagerstroemia*.
 Crown of thorns—*Euphorbia splendens*.
 Crownvetch—*Coronilla*.
 Cucumbertree—*Averrhoa*.
 Cup and saucer—*Campanula*.
 Curly palm—*Kentia Belmoreana*.
 Custard apple—*Anona*.
 Cypress—*Cupressus*.

- Daffodil—*Narcissus*.
 Datepalm—*Phoenix*.
 Daylily—*Hemerocallis*.
 Deodar—*Cedrus deodara*.
 Desert willow—*Chilopsis*.
 Deviltree—*Alstonia*.
 Dhak—*Butea frondosa*.
 Dita bark—*Alstonia*.
 Dogwood—*Cornus*.
 Dragontree—*Dracaena draco*.
 Dusty miller—*Centaurea*.
 Dutchman's pipe—*Aristolochia*.
 Dwarf Poinciana—*Caesalpinia pulcherrima*.
 Egyptian paper plant—*Cyperus papyrus*.
 Elephants ear—*Colocasia*.
 English daisy—*Bellis*.
 English laurel—*Prunus laurocerasus*.
 Espino—*Acacia Cavendishii*.
 Evening primrose—*Oenothera*.
 False Clematis—*Agdestis*.
 Fernpalm—*Cycas revoluta*.
 Fiddlewood—*Citharexylum*.
 Fig—*Ficus carica*.
 Firethorn—*Crataegus pyracantha*.
 Firetree—*Stenocarpus*.
 Fishpole bamboo—*Phyll. viridiglaucescens*.
 Flag—*Iris*.
 Flamboyant—*Poinciana*.
 Flametree—*Brachychiton acerifolium*.
 Flax—*Linum*.
 Flooded gum—*Euc. tereticornis*.
 Flor de Pascua—*Euphorbia pulcherrima*.
 Floripondia—*Datura*.
 Flowering maple—*Abutilon*.
 Foxglove—*Digitalis*.
 Frangipani—*Plumeria*.
 Funeral Cypress—*Cupressus funebris*.
 Galan de noche—*Cestrum nocturnum*.
 Gardener's garter—*Arundo*.
 Garland flower—*Hedychium*.
 Garlic pear—*Crataeva*.
 German Ivy—*Senecio*.
 Giant reed—*Arundo*.
 Ginep—*Melicocca*.
 Gingerlily—*Hedychium*.
 Gingerplant—*Alpinia*.
 Glorypea—*Clanthus*.
 Golden bamboo—*Phyllostachys aurea*.
 Golden chain—*Laburnum*.
 Golden dewdrops—*Duranta*.
 Golden glow—*Rudbeckia*.
 Golden Wattle—*Acacia pycnantha*.
 Golddustplant—*Aucuba*.
 Goldflower—*Hypericum moserianum*.
 Gorse—*Ulex*.
 Governors plum—*Flacourtia*.
 Granadilla—*Passiflora quadrangularis*.
 Green Wattle—*Acacia decurrens*.
 Grenadilla—*Passiflora edulis*.
 Groo-Groo—*Acrocomia*.
 Guacima—*Guazuma*.
 Guadalupe palm—*Erythea edulis*.
 Guanabana—*Anona muricata*.
 Guango—*Pithecolobium*.
 Guava—*Psidium*.
 Gynerium—*Cortaderia*.
 Hackberry—*Celtis*.
 Hawthorn—*Crataegus*.
 Heath—*Erica*.
 Henequen—*Agave rigida*.
 Hennabush—*Lawsonia*.
 Henoki—*Celtis sinensis*.
 Hollyfern—*Cyrtodium falcatum*.
 Hollyhock—*Althaea*.
 Honeybell—*Mahernia*.
 Honeyflower—*Melianthus*.
 Honeyscented gum—*Euc. melliodora*.
 Honeysuckle—*Lonicera*.
 Horn of Plenty—*Datura*.
 Huisache—*Acacia Farnesiana*.
 Iceplant—*Mesembryanthemum*.
 Incense Cedar—*Libocedrus*.
 Indian fig—*Opuntia*.
 Indian Hawthorn—*Raphiolepis*.
 India rubber—*Ficus elastica*.
 Ironwood—*Lyonothamnus*.
 Isolepis—*Scirpus*.
 Ivyleaved geranium—*Pelargonium peltatum*.
 Jaborandi—*Pilocarpus*.
 Jackfruit—*Artocarpus integrifolia*.
 Jacob's staff—*Fouquieria*.
 Jamaica apple—*Anona cherimolia*.
 Jamaica honeysuckle—*Passiflora laurifolia*.
 Jambolan plum—*Eugenia jambolana*.
 Japanese Cedar—*Crytomeria*.
 Japanese Ivy—*Ampelopsis*.
 Japanese memorial rose—*R. Wichuriana*.
 Japanese Paperplant—*Fatsia papyrifera*.
 Japanese Rose—*Kerria japonica*.
 Jarrah—*Euc. marginata*.
 Javaplum—*Eugenia jambolana*.
 Jerusalem Pine—*Pinus Halepensis*.
 Jerusalem sage—*Phlomis*.
 Jerusalem thorn—*Parkinsonia aculeata*.
 Jojoba—*Simmondsia*.
 Jonquil—*Narcissus*.
 Juajillo—*Pithecolobium brevifolium*.
 Jujube—*Zizyphus*.
 Jupiters beard—*Anthyllis*.
 Kaffirplum—*Harpephyllum*.
 Kaiapple—*Aberia*.
 Kaki—*Diospyros kaki*.
 Kangaroothorn—*Acacia armata*.
 Kangarooovine—*Cissus antarctica*.
 Karaka—*Corynocarpus*.
 Karo—*Pittosporum crassifolium*.
 Karri—*Euc. diversicolor*.
 Kauri pine—*Agathis*.
 Keiapple—*Aberia*.
 Kenilworth Ivy—*Linaria*.
 Kino gum—*Euc. resinifera*.
 Kolea—*Myrsine Lessertiana*.
 Kolkas—*Colocasia*.
 Kooya maki—*Sciadopytis*.
 Kudzu vine—*Pueraria*.
 Laburnum—*Cytisus*.
 Lady Washington geranium—*Pelargonium domesticum*.
 Large leaved Ironbark—*Euc. siderophloia*.
 Larkspur—*Delphinium*.
 Lavender—*Lavendula*.
 Lawson Cypress—*Chamaecyparis* or *Cupressus*.
 Lemon Geranium—*Pelargonium limonium*.
 Lemon gum—*Euc. citriodora*.
 Lightwood—*Acacia melanoxylon*.
 Lily of the Nile—*Agapanthus*.
 Lion's' ear or tail—*Leonotis*.
 Litchi—*Nephelium*.
 Live Oak—*Quercus agrifolia*.
 Longan—*Nephelium*.
 Loquat—*Eriobotrya*.
 Madeira vine—*Boussingaultia*.
 Madrona—*Arbutus Menziesii*.
 Male Bamboo—*Dendrocalamus strictus*.
 Mahwa—*Bassia latifolia*.
 Maidenhair—*Adiantum*.
 Maidenhairtree—*Ginkgo*.
 Malay Apple—*Eugenia maliaccensis*.
 Mammee sapota—*Lucuma*.
 Mamon—*Anona glabra*.
 Mauloak—*Quercus chrysolepis*.
 Manioc—*Cassava*.
 Manna gum—*Euc. viminalis*.

- Manzanita—*Arestostaphylos*.
 Marmelade plum—*Lucuma*.
 Marshmallow—*Althaea*.
 Mate—*Ilex Paraguayensis*.
 Matiljah poppy—*Romneya*.
 Matr' monyvine—*Lycium*.
 Mayten—*Maytenus*.
 Melon pawpaw—*Carica papaya*.
 Melonshrub—*Solanum guatemalense*.
 Memorial rose—*Rose wichuraiana*.
 Mesquit—*Prosopis*.
 Messmate—*Euc. obliqua*.
 Metake—*Arundinaria japonica*.
 Mexican orange—*Choisya*.
 Mexican peach—*Casimiroa*.
 Midshipman's' butter—*Persea*.
 Mimbres—*Chilopsis*.
 Mimosa—*Acacia*.
 Mock clematis—*Agdestis*.
 Mock orange—*Philadelphus*, also *Pittospor'm undulat'r*.
 Momoncillo—*Melicocca bijuga*.
 Monkey cocoanut—*Jubaea*.
 Monkeypuzzle—*Araucaria*.
 Monterey pine—*Pinus insignis* or *radiata*.
 Moonvine—*Ipomea*.
 Moreton bay chestnut—*Castanospermum*.
 Moreton bay fig—*Ficus macrophylla*.
 Morningglory—*Convolvulus* and *Ipomea*.
 Mountain cherry—*Prunus orientalis*.
 Mountain ebony—*Bauhinia*.
 Mountain laurel—*Umbellularia*.
 Mountain lilac—*Ceanothus*.
 Mountain rose—*Antigonon*.
 Mundl—*Chlorocodon*.
 Mango—*Mangifera*.
 Myall—*Acacia*.
 Myrtle—*Myrtus* and *Vinca*.
 Naio—*Myoporum*.
 Nanche—*Byrsonima*.
 Narrowleaf Ironbark—*Euc. crebra*.
 Natal laburnum—*Calpurnia lasiogyne*.
 Natal plum—*Carissa grandiflora*.
 Navelwort—*Omphalodes*.
 Nettletree—*Celtis*.
 New Zealand flax—*Tetragonia*.
 Niggertoe—*Bertholletia*.
 Nightblooming jasmine—*Cestrum nocturnum*.
 Ningala—*Arundinaria falcata*.
 Norfolk island pine—*Araucaria*.
 Ocotillo—*Fouquieria*.
 Oleaster—*Eleagnus*.
 Olive—*Olea*.
 Ombu—*Pircunia*.
 Opopanax—*Acacia Farnesiana*.
 Oregon grape—*Berber's*.
 Orrisroot—*Iris florentina*.
 Oso berry—*Nuttallia*.
 Otaheite gooseberry—*Phyllanthus distichus*.
 Pacay—*Inga*.
 Pakoo—*Gingko*.
 Pali-mara—*Alstonia*.
 Palisanderwood—*Jacaranda*.
 Palma Christi—*Ricinus*.
 Palma de miel—*Jubaea*.
 Palmetto—*Sabal*.
 Palmgrass—*Panicum excurrentis*.
 Palm'lly—*Dracaena indivisa*.
 Palo catre—*Pithecolobium*.
 Palo de arco—*Tecoma stans*.
 Palo fierro—*Lyonothamnus*.
 Palo verde—*Parkinsonia aculeata*.
 Pampasgrass—*Gynerium* or *Cortaderia*.
 Paperflower—*Bougainvillea*.
 Paperplant—*Aralia* and *Cyperus*.
 Paranut—*Bertholletia*.
 Paris daisy—*Marguerite*.
 Parrots bill—*Clanthus*.
 Pathchouliplant—*Pogostemon*.
 Pawpaw—*Asimina* and *Carica*.
 Peacock flower—*Poinciana*.
 Pearlbush—*Exochorda*.
 Pearlfuit—*Margyricarpus*.
 Peepul—*Ficus religiosa*.
 Pepper—*Piper*.
 Peppermint gum—*Euc. amygdalina*.
 Perennial pea—*Lathyrus*.
 Periwinkle—*Vinca*.
 Persimmon—*Diospyros*.
 P'co paloma—*Lotus Bertholeti*.
 Pilu—*Sophora tetraptera*.
 Pineapple—*Ananassa*.
 Pinonpine—*Pinus edulis*.
 Plumepoppy—*Bocconia*.
 Poinsettia—*Euphorbia pulcherrima*.
 Pondapple—*Anona glabra*.
 Pomegranate—*Punica*.
 Popinac—*Acacia Farnesiana*.
 Porcup'ne plant—*Scirpus*.
 Prairierose—*Rosa setigera*.
 Praong bamboo—*Arundinaria Hookeriana*.
 Prickly pear—*Opuntia*.
 Prickly poppy—*Argemone*.
 Pride of China—*Melia*.
 Privet—*Ligustrum*.
 Puddingpipetree—*Cassia fistula*.
 Pulas—*Butea frondosa*.
 Punktree—*Melaleuca leucadendron*.
 Quebracho—*Aspidosperma*.
 Queensland nut—*Macadamia*.
 Raintree—*Caesalpinia sappan* or *Pithecolobium*.
 Rambustan—*Flacourtia Ramontchi*.
 Ramie—*Boehmeria*.
 Rangoon creeper—*Quisqualis*.
 Rattle box—*Crotalaria*.
 Red box—*Euc. polyanthemus*.
 Redflowering gum—*Euc. ficifolia*.
 Red gum—*Euc. rostrata*.
 Redhot poker—*Kniphofia* or *Tritoma*.
 Red Ironbark—*Euc. paniculata* or *sideroxydon*.
 Red sandalwood—*Adenantha*.
 Redwood—*Sequoia sempervirens*.
 Reseda—*Lawsonia*.
 Ribongrass—*Arundo*.
 Ricepaperplant—*Aralia* or *Fatsia*.
 Ringal bamboo—*Arundinaria falcata*.
 Rockrose—*Cistus*.
 Rosa de Montana—*Antigonon*.
 Roseapple—*Eugenia jambos* or *malaccensis*.
 Rosebay—*Oleander*.
 Rosegeranium—*Pelargon quercifolium*.
 Rosemary—*Rosmarinus*.
 Rose of Sharon—*Hibiscus syriacus*.
 Rosewood—*Dalbergia latifolia*.
 Rouge plant—*Rivina*.
 Royal palm—*Oreodoxa*.
 Rubbertree—*Ficus* and *Hevea*.
 Sacci—*Agave rigida*.
 Sacred bamboo—*Nandina*.
 Sagopalm—*Cycas revoluta*.
 Saltbush—*Atriplex*.
 Sal tree—*Shorea*.
 Sampige—*Michelia champaca*.
 Sandstay—*Leptospermum*.
 San Miguelito—*Antigonon*.
 Sapodilla—*Achras sapota*.
 Sapota—*Casimiroa*.
 Sappanwood—*Pithecolobium*.
 Scarlet Freesia—*Lapeyrousia*.
 Scarlet gum—*Euc. ficifolia*.

- Screwbean—*Prosopis*.
 Screwpine—*Pandanus*.
 Scythian Lamb—*Cibotium Barometz*.
 Seagrape—*Coccoloba*.
 Senna—*Cassia*.
 Sensative plant—*Mimosa*.
 Shake wood tree—*Cecropia*.
 Shellflower—*Alpinia*.
 She-oak—*Casuarina*.
 Shoregrape—*Coccoloba*.
 Silk cotton tree—*Eriodendron*.
 Silkoak—*Grevillea robusta*.
 Silkvine—*Periploca graeca*.
 Sisal—*Agave rigida*.
 Sissoo—*Dalbergia*.
 Silvertree—*Leucadendron*.
 Silver Wattle—*Acacia dealbata*.
 Snapdragon—*Antirrhinum*.
 Snowbush—*Phyllanthus*.
 Snowflake—*Leucojum*.
 Soapberry—*Sapindus*.
 Soursop—*Anona muricata*.
 Spanish lime—*Melicocca*.
 Spotted gum—*Euc. maculata*.
 Staghorn fern—*Platycerium*.
 Star apple—*Chrysophyllum*.
 Star of Bethlehem—*Ornithogalum*.
 St. John's bread—*Ceratonia*.
 Stone pipe—*Pinus pinea*.
 Strawberry raspberry—*Rubus rosaeflorus*.
 Strawberry tree—*Arbutus and Benthamia*.
 Stringybark—*Euc. obliqua*.
 Striped bamboo—*Phyll. castillonis*.
 St. Thomas tree—*Bauhinia tomentosa*.
 Sugar apple—*Anona squamosa*.
 Sugargum—*Euc. corynocalyx*.
 Sugi—*Cryptomeria*.
 Suirsaak—*Anona muricata*.
 Sunnifiber—*Crotalaria*.
 Sunset Hibiscus—*Hibiscus manihot*.
 Susakka—*Anona muricata*.
 Swamp mahogany—*Euc. robusta*.
 Swan river daisy—*Brachycome*.
 Sweet Bay—*Laurus nobilis*.
 Sweet olive—*Osmanthus fragrans*.
 Sweetsop—*Anona squamosa*.
 Sword fern—*Nephrolepis*.
 Syringa—*Philadelphus*.
 Tapeworm plant—*Muhlenbeckia platyclada*.
 Tarata—*Pittosporum eugenoides*.
 Taro—*Colocasia*.
 Tawhiwhi—*Pittosp. tenuifolium*.
 Tea—*Camellia Thea*.
 Tecojote—*Crataegus mexicana*.
 Thorny bamboo—*Bambusa arundinacea*.
 Torch lily—*Kniphofia*.
 Tornillo—*Prosopis*.
 Toyon—*Heteromeles*.
 Transvaal daisy—*Gerbera*.
 Travelers tree—*Ravenala*.
 Tree alfalfa—*Medicago arborea*.
 Tree fern—*Alsophila and Dicksonia*.
 Tree Hibiscus—*Lagunaria*.
 Treetomato—*Cyphomandra*.
 Trincho malee—*Berrya*.
 Tritoma—*Kniphofia*.
 Trumpet vine—*Eignon'a and Tecoma*.
 Tuna—*Opuntia*.
 Turks cap—*Achania*.
 Turpentine tree—*Syncarpia*.
 Ugni—*Myrtus ugni*.
 Umbrella plant—*Cyperus*.
 Umbrella pine—*Pinus pinea*.
 Umbrella tree—*Melia*.
 Valley oak—*Quercus lobata*.
 Varnishtree—*Koelreuteria*.
 Watermelon—*Passiflora laurifolia*.
 Water lily—*Nymphaea*.
 Wattle—*Acacia*.
 Wax palm—*Ceroxylon*.
 Wax plant—*Hoya*.
 Weather plant—*Abrus*.
 Weeping Myall—*Acacia pendula*.
 White box—*Euc. hemiphloia albens*.
 White cup—*Nierembergia*.
 White flowered gum—*Euc. calophylla*.
 White gum—*Euc. haemastoma and coriacea*.
 White Ironbark—*Euc. leucoxyton*.
 Wild cherry—*Prunus orientalis*.
 Wild lilac—*Ceanothus*.
 Wildflower—*Anemone*.
 Windmill palm—*Chamaerops*.
 Wintersweet—*Acokanthera*.
 Wirevine—*Muhlenbeckia complexa*.
 Yam—*Dioscorea*.
 Yatetree—*Eu. cornuta*.
 Yellow box—*Euc. melliodora*.
 Yellow elder—*Tecoma stans*.
 Yellow Lilac—*Cestrum aurantiacum*.
 Ylang-Ylang—*Canangium*.
 Yoksun—*Arundinaria Hookeriana*.
 Zapote blanco—*Casimiroa*.
 Zapote borracho—*Lucuma salicifolia*.
 Zapote chico—*Achras sapota*.
 Zapote negro—*Diospyros ebenaster*.

Santa Barbara

Is the Mecca for all plant lovers and intending planters in search of information. In its gardens more rare plants can be seen and studied in the course of half a day's drive than elsewhere in a week's search, and Santa Barbara has harbored plant enthusiasts for so many years that of a great many rare varieties old and fully developed specimens can be found only in this neighborhood.

Montecito, a few miles distant, is one series of beautifully situated and tastefully arranged country places, most of them open to visitors and containing a wealth of vegetation from all parts of the world.

The small, but very interesting, city parks are marvelous examples of what the landscape artist can accomplish, and are instructive to such a degree as to more than repay the intending planter for a special journey.

We are always ready to direct visitors to the most interesting places; on a drive around branches and flowers of interesting plants may be gathered and by means of these they can be identified at our nurseries. One day spent at Santa Barbara may mean untold beauties for your own garden.

Our place is two blocks up the main street from the station, and someone is always in attendance.

HAVE YOU SECURED
A PLANT OF..... *Eugenia Myrtifolia*?



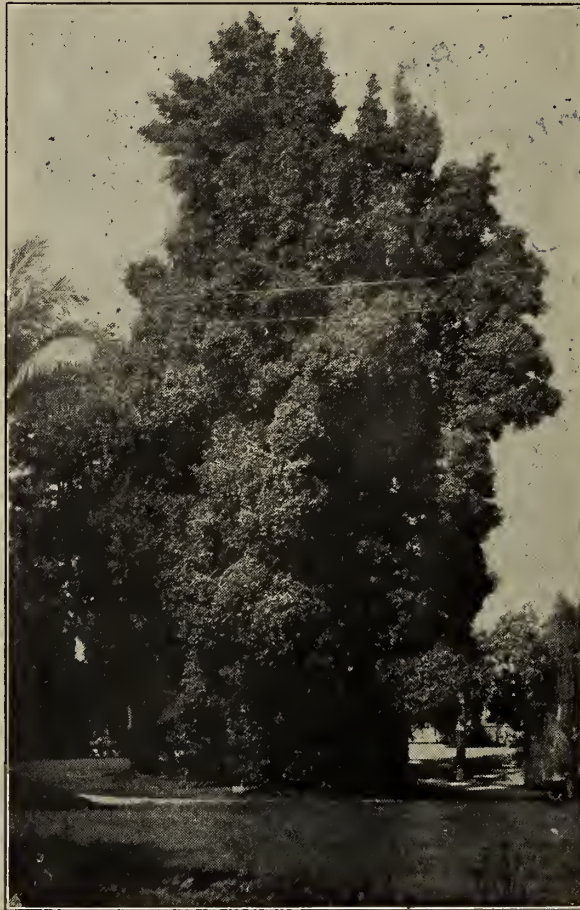
Evergreen.

A splendid street
tree.

A beautiful tree for
lawns.

Great for Avenues.

Hardy and easily
grown.



Fine for Hedges.

Can be trained to
columns like Ital-
ian Cypress.

As good as a Bay
Tree in a tub.

As desirable as Box-
wood for porches.



Clean, glossy foliage, creamy white flowers, bright red berries.
The most desirable tree obtainable.

Prof. Hall in his "Studies in Ornamental Trees and Shrubs" writes in part:

"This tree may be used as a hedge plant, as a shrub for the lawn or garden, as a specimen tree for large grounds, or as a street tree, and is perhaps the best of the whole list for general planting. The habit is dignified, yet graceful and pleasing. Its leaves are plentiful, clean, glossy and green. It prunes well, and so may be molded to harmonize with its surroundings. Eugenia is hardy for all of the coast districts of California, grows well as far north as Sacramento (and there is no reason why it should not be used much beyond this latitude), and in the interior at least as far as Redlands.

"Growth is not rapid; although one specimen at Coronado attained a height of 40 feet in 20 years. At Santa Barbara a tree 80 feet high was observed, but the age is not known. On the San Francisco Peninsula it is commonly grown in masses and therefore remains low. A good example, 20 feet high, may be seen on the Capitol grounds at Sacramento.

"As a street tree, Eugenia Myrtifolia would almost certainly be a splendid success. The difficulty of procuring a large supply of trees has prevented its use for this purpose, but they are now sufficiently plentiful to warrant its adoption for some of our more progressive cities."

We can furnish small plants in pots at 35 cents each; balled from the field, bushy specimens, 1/2 ft., 75 cents; 2-3 ft., \$1.00; 3-4 ft., \$3.00 to \$4.00, according to the plants. We have them pruned in pyramid shape, 2 ft. tall in 5 gal. cans at \$1.25; 3 ft., \$2.00; 4 ft., \$4.00; in Japanese tubs at 25 cents added to these prices. We have standards in tubs and cans at from \$2.50 to \$5.00 each.