

Historic, Archive Document

Do not assume content reflects current scientific knowledge, policies, or practices.

W 1 +
62.19
JANUARY, 1904.

SEED CATALOGUE

*** OF ***

N. L. WILLET DRUG CO.

ALSO SEED JOBBERS

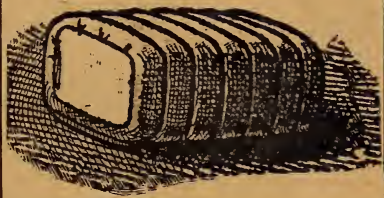
AUGUSTA, GEORGIA.

This Seed Catalogue is issued by our SEED DEPARTMENT, (jobbing). Our Seed Contracts are given to the best individual growers in U. S. On many SOUTHERN SEEDS we are the largest growers and contractors in U. S.



ELI WHITNEY

Invented Cotton Gin 1792, at Augusta, Ga.



ALMANAC (Eastern Standard Time). Edited by AUGUSTA DRUG CO. (Strictly Wholesale), Augusta, Ga., with Weather Forecast for the year

SPECIALTIES

—FOR—

General Merchant Stores.

GARDEN SEED IN PAPERS. Beans, Peas, Cabbage, Collards, Field Corns, Turnips, Watermelons, Cantaloupes, Onion Sets, Irish Potatoes, Sorghum, Cat Tail Millet, German Millet, Native Georgia Rye, Purple Straw Wheat, Barley, Chufas, Cow Peas, Spanish Peanuts, Mammoth Peanuts, Native Rust Proof Oats, Appler Oats, Burt Oats, Cotton, Upland Rice, Clovers, Vetches, Bermuda Grass Seed, Velvet Beans, Beggar Weed, Rape, Artichokes.

SPECIALTIES

For U. S. Wholesale Seed Trade

GEORGIA GROWN SEED. Collards, Cottons, Cow or Field Peas, Southern Giant Curled Mustard, Ostrich Plume Mustard, Okra, Watermelons, Nixon Cantaloupe, Mexican June Corn, Cattail or Pearl Millet, Spanish Peanuts, Big Peanuts, Upland Rice, White Multiplier Onion Sets, Yellow Multiplying Shallots, Burt Oats, Appler Oats, Chufas, Velvet Beans, Giant Beggar Weed, Japan Clover, Georgia Rye, Johnson Grass, Bermuda Grass, Cassava, Teosinte, Amber and Orange Cane, Kaffir Corn, Sweet Potatoes, Asparagus Roots, and Seeds, Beardless Barley, Frost King Turnips, Breadstone Turnips, Seven Top Turnips, Cowhorn Turnips.

TO THE WHOLESALE SEEDMEN OF THE UNITED STATES

Seed catalogued by us "grown in Georgia" attain their best development in Georgia, and should be bought afresh here each year. We are prepared to stock the wholesale United States Seedsmen with same at lowest prices and the best types. State quantity when you write.

TO THE RETAIL SEED MERCHANTS

of Georgia and South Carolina and elsewhere. If you sell seeds in papers that are sent out on commission, we urge you for your reputation's sake and your customers' good, that you discard same. The seed are not burnt that you return, but are sent back and forth for years till sold. The various State experimental stations have many times warned the people against seed as being untrue to type and faulty in germination. The different habitats of the various seeds do not allow any seedman in the United States to grow but a small portion of this seed stock. Our seed are grown for us by careful growers throughout the United States (not Europe) wherever the best development of the individual seed is attained. We are prepared to compete with any United States markets on seeds in paper or in bulk.

WRITE US THE KIND YOU WANT and QUANTITY

OUR WARRANTY

We select our stocks with greatest care, and pay liberal prices. We feel justified in saying that all our seeds are the freshest and best to be found, but, at the same time, it must be distinctly understood that we sell no seeds with warranty expressed or implied in any respect, and will not be in any way responsible for the crop. If our seed are not accepted on these terms, return them at once and we will refund money.

DIRECTIONS FOR ORDERING SEEDS

Retail Mail Orders.—Send Cash with orders.—Seeds sent only to amount of remittance. We open no accounts. Remit in cash, by express money order, registered letter (at your risk) or in postage stamps. No C. O. D. orders sent unless money accompanies order for an amount sufficient to cover express charges both ways. Always state whether to ship your goods by postage or express, and do not forget to enclose the postage or express charges.

POSTAGE AND EXPRESS

Postage (always to be prepaid by us) to any point in the United States or Cuba or Porto Rico is on a 1-lb. package, 10c.; 2-lb. package, 18c.; 3-lb. package, 25c.; 4-lb. package, 35c. By Southern Express Company at following rates (we must prepay) to any office of the Southern Express Company in United States, on 1 1-2 lb. or less package, 10c.; 2-lb. package, 14c.; 3-lb. package, 18c.; 4-lb. package, 26c.

DISTANCE

makes no difference by above cheap, easy transportation. We can do your Seed Business for you if you are 10 miles or 1,000 miles away—it's all the same. And we will do your business as carefully for you whether you want 10 cents or 10 dollars' worth of seed. We will be glad to mail free this catalogue to your lady friends if addresses are sent to us.

MAILED FREE OF POSTAGE TO YOU

All Packet Seeds assorted as wanted, including Beans, Peas and Corn at 5c. each, 1 doz. at 60c., 2 or more doz. at 55c., and all Bulk Seeds as priced, up to and including 4 oz.

SEEDS IN PACKETS

sold over our counter, (buyer paying transportation), 1 pkt. 5c., 1 or more doz. at 50c. doz.

This Catalogue is divided into six parts: Garden Vegetables, Forage and Hog Crops, Field Crops and Grass Seeds.

N. L. WILLET DRUG CO.

SEED DEPARTMENT.

AUGUSTA, GA.

SEED INDEX.

GARDEN.	Page.		Page.	Page.		
Asparagus	1	Spinach	9	Cotton	16	
Beans	2	Squash	9	Oats	19	
Beets	3	Tomato	9	Potatoes, Irish	20	
Cabbages	3	Turnip	10	Cow Peas	20	
Cabbage Plants	4	Watermelon	11	Rice	21	
Cantaloupes	6	FORAGE AND HOG CROPS			Potatoes, Sweet	20
Carrots	4	Amber and Oronge Sor-		Wheat	21	
Celery	4	ghum	12	Pecans	21	
Collards	5	Rye	13	Pumpkins	21	
Sweet Corn	5	Barley	13	Raffia	21	
Cucumbers	5	Cat Tail Millet	12	GRASSES,		
Egg Plant	6	Chufas	13	Johnson	21	
Kale	6	Peanuts	13	Vetches	22	
Lettuce	6	Teosinte	13	Lucerne	22	
Mustard	6	German Millet	14	Bur Clover	22	
Okra	7	Velvet Beans	14	Bermuda	22	
Onion Seed	7	Kaffir Corn	14	Japan	22	
Onion Sets	8	Pop Corn	14	Herts	22	
Parsley	8	Beggar Weed	14	Red Clover	22	
Parsnip	8	Rape	14	Crimson Clover	23	
Peas	8	Artichokes	15	White Clover	23	
Pepper	9	Sun Flower	15	Kentucky Blue	23	
Pop Corn	5	Cassava	15	Texas Blue	23	
Rape	9	MISCELLANEOUS FIELD.			Lawn	23
Radish	9	Corns	15	Orchard	23	
Salsify	9			Mel. Alba	23	

OUR PREMIUM

To those who send cash with order, \$2.50 worth of Garden Seeds, at listed prices, or \$5.00 worth seeds other than "Garden Seeds," and who will send their P. O. address and make special request for the Premium, we will send for **one year free**,

SOUTHERN FARM GAZETTE, of Starkville, Miss.

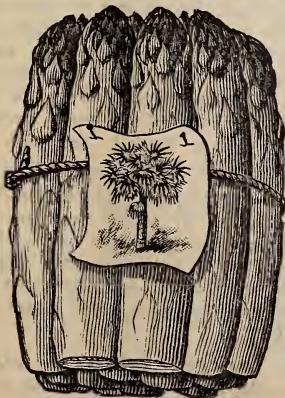
We can supply all the varied books needed for all Rural Life Associations at Publishers prices, Tell us the line you are interested in.

GARDEN SEEDS

Best Adapted to our Southern States.

GEORGIA ASPARAGUS SEED.

One ounce sows 35 feet, producing about 800 plants. Fifteen lbs. sows one



acre. One lb. produces plants to set one acre. Sow seed in March or April.

To raise asparagus roots from seed, sow the seed thinly one inch deep in rows fifteen inches apart. Keep clean of weeds, and thin out the plants to four inches apart. When one or two years old set out in permanent beds.

GIANT ARGENTEUIL; PALMETTO; FRENCH; BARR'S MAMMOTH; CONNOVER'S COLOSSAL SEED. One pound, 35c; 5 pounds, 25c pound.

ROOTS.—All of the above kinds of Asparagus Roots bear transportation to any part of the United States. Shipments made February and March, and November, in which months roots should be set.

Culture.—Prepare in spring or fall, bed five feet wide, two feet deep; fill in manure and soil. Make three rows and set out roots six inches below surface and

twelve inches in row. Every autumn dress with manure and salt, after tops are cut. Bed should last twelve years. 100 roots set bed ten feet by forty feet. About 6000 set an acre 6 feet apart, and 4000 8 feet apart.)

A most profitable market crop about Augusta. Get prices on roots.

BEANS.—BUSH, SNAP OR DWARF.

For all beans when sent by mail, add for postage; Half-pint, 5c; pint, 10c; quart, 15c.

(Culture.—Beans can be sown for succession from end of February, or sooner, until September. Bear till frost. Drop several beans every two or three inches in rows thirty inches apart. Cover two inches deep. Don't work while dew is on beans for fear of rust. One quart sows 100 feet row, 1 1-4 bushels, one acre.)

IMPROVED ROUND POD, EXTRA EARLY RED VALENTINE.—This is one of the best; earlier than the old Early Red Valentine. The vine is dwarf, the pods are smooth, round, stringless and very thickly set, remaining green and tender a long time after they are fit to pull. Vines very uniform, making little or no top growth and producing enormously. Packet, 5c; pint, 15c; quart, 25c; peck, \$1.40.

GIANT STRINGLESS GREEN POD.—Of all green podded bush beans, this variety is decidedly the Earliest and Best. It is the only stringless green pod bush bean in cultivation, and surpasses all others in crisp and tender flavor. The straight, long, green, thick pods are all absolutely stringless and of a beautiful fleshy appearance. Packet, 5c.; pint, 20c.; quart, 35c.; peck, \$1.75.

IMPROVED GOLDEN WAX.—This variety is pronounced to be the very best dwarf bean known. The pods are large, long, brittle and entirely stringless, and of a beautiful, rich golden wax color. As a snap bean, it excels every other variety in tenderness and rich buttery flavor, while as a shell bean, for winter use, it has few or no superiors. It is very prolific, of dwarf, compact growth. Packet, 5c; pint, 20c; quart, 35c; 1-4 bushel, \$1.75.

EARLY YELLOW SIX WEEKS.—Hardy and very early; green pod; resembles Mohawk, save in color; a leading sort. Packet, 5c; pint, 15c; quart, 25c; peck, \$1.40.

EARLY MOHAWK SIX WEEKS.—Our hardest bean; will stand some frost. Preferred for early planting. Long, green, flat pods. Packet, 5c; pint, 15c; quart, 25c; peck, \$1.40.

DWARF GERMAN BLACK WAX.—An old variety, and a great favorite with market gardeners and others. Tender, yellow wax pods. Packet, 5c; pint, 20c; quart, 35c; peck, \$1.70.

EXTRA EARLY REFUGEE, OR 1,000 TO 1.—A 7-weeks' bean, medium to late, large vines, favorite for canning and pickling, productive, round pod, good main crop. Packet, 5c; pint, 15c; quart, 25c; peck, \$1.45.

WILLET'S BUSH LIMA.—A bush form of the large pole lima, the beans being large and flat, like those of that variety. It is very productive, and its dwarf character is well established. Packet, 5c; pint, 20c; quart, 35c; peck, \$1.75.

BEANS.—POLE.

(Culture.—Plant in hills four feet apart each way, four or five beans to a hill; plant the eye down. One quart plants 150 hills; half bushel, one acre.) Sow pole beans later than dwarf, and leave three plants to hill. Dwarf beans ready for table 1 1-2 to 2 months. Lima three months; pole 3 2-3 months.

OLD HOMESTEAD, OR IMPROVED KENTUCKY WONDER.—This is the earliest of all green podded pole beans. Enormously productive, bearing its pods in clusters. The pods are long, crisp, tender and bright green in color. A very prolific variety, and one of the best in our list. Packet, 5c; pint, 20c; quart, 35c; peck, \$1.75.

SOUTHERN PROLIFIC.—Strictly a Southern bean. Stands the Southern heat. Continues to bear until frost. Pods seven inches long and flat; seeds dark yellow. Standard in this latitude. Favorite way to plant in the South is in damp low lands among corn, and let the vines grow up the corn stalks. Packet, 5c; pint, 20c; quart, 30c; peck, \$1.50.

SMALL LIMA OR CAROLINA SEWEE.—Similar in every way to large lima, except that it is only half as large, seeds and pods being smaller. Largely grown in the South, and immensely popular. Packet, 5c; pint, 20c; quart, 30c; peck, \$1.60.

TALL BLACK GERMAN WAX.—Yellow pods. Bears richly flavored, string-

less pods of the same good quality as Dwarf German Wax. Packet, 5c; pint, 20c; quart, 30c; peck, \$1.60.

LARGE WHITE LIMA.—Either green or dry, this is the standard table vegetable, and the best shell bean known. Give it rich ground and plenty of room. Half-pint, 15c; pint, 20c; quart, 35c; peck, \$1.75.

BEETS.

(Culture—One ounce plants 100 feet; 4 pounds, 1 acre. Soak seed 12 hours before planting. Can be sown pretty much all spring and summer. Sow 1 inch deep, in drills 18 inches apart; thin out to 8 inches in drill.)

EARLY ECLIPSE—The handsomest of the very early beets. Globe shaped, fine, dark red color, rapid grower, small tops, purplish green foliage and red veins. Packet, 5c; ounce, 10c; 4 ounces, 20c; pound, 50c.

EARLY DARK BLOOD TURNIP—Trifle later than Eclipse; flesh deep blood red; tender and fine flavored. The most generally used family beet. Packet, 5c; ounce, 10c; 4 ounces, 20c; pound, 50c.

EXTRA EARLY, or BASSANO—As early as Eclipse; flesh pink, with white streaks; very juicy. Packet, 5c; ounce, 10c; 4 ounces, 20c; pound, 50c.

IMPROVED LONG, SMOOTH, BLOOD RED—Medium late; often used for late summer planting and winter use. Packet, 5c; ounce, 10c; 4 ounces, 20c; pound, 50c.

HALF LONG BLOOD RED—Similar to Long Blood, but differs in size, being half long. Packet, 5c; ounce, 10c; 4 ounces, 20c; pound, 50c.

SILESIAN SUGAR WHITE—A sweet, white beet, preferred by some. Packet, 5c; ounce, 10c; 4 ounces, 20c; pound, 50c.

BEETS FOR STOCK, OR MANGEL WURZEL.

(Culture—In Europe this is one of the necessary crops for cattle—500 to 600 bushels being grown to an acre. Sow 5 pounds to acre. Sow in rows 2 feet apart and thin out to 12 inches in row.)

NORBITAN GIANT—We have tried to get in this, the largest stock beet that grows. A long, red variety of great size; flesh solid; a good keeper. Ounce, 10c; 4 ounces, 15c; pound, 35c; 5 pounds, \$1.25.

CABBAGES.

The whole line of our Cabbages are grown for us on Long Island by the best known and most reliable Cabbage Seed growers in the United States. There are no better Cabbage Seed in the world than those we offer.

(Culture—One ounce makes 2,000 plants or 150 feet row; 5 ounces will plant an acre. Sow in beds almost any month in the year, usually from February to November. For winter crop sow in August and September, early varieties. For late cabbage sow late sorts March, April and May, for June, July and August setting. Transplant deep, up to first leaf, in deep, rich soil, and water plants well. Set out 2 to 3 feet in row; row 30 inches apart; ready for use in 100 to 160 days.



EARLY CHARLESTON WAKEFIELD—Early and a well known favorite; heads are conical shaped; possibly the principal variety that is grown by truckers for early shipment, and by gardeners in general. Quantities of this cabbage grow off Charleston of 22 pounds weight, all solid heads. Packet, 5c; ounce, 15c; 4 ounces, 50c; pound, \$1.75.

EARLY JERSEY WAKEFIELD—Same price as Charleston Wakefield.

GEORGIA EARLY TRUCKER—For market gardener or planter; one of the best; large size; handsome color; fine fla-

vor; does not run to seed; largely used by South Carolina sea coast shippers. Packet, 5c; 1 ounce, 15c; 4 ounces, 50c; 1 pound, \$1.75.

IMPROVED EARLY DRUMHEAD—An intermediate kind between the cone-shaped early and late varieties; can be planted closely; takes its name from its shape. Packet, 5c; ounce, 15c; 4 ounces, 50c; pound, \$1.75.

WILLET'S ALL-SEASONS SURE HEADER—One of the finest for second early or for late growing. Grows quickly to a large size and heads surely. It is a true, sure, hard-header. Its name is an index of its character. Packet, 5c; ounce, 15c.; 4 ounces, 50c.; pound, \$1.75.

IMPROVED EARLY FLAT DUTCH—Not so early as the very earlier, and not so heavy as some, but very salable because of its flat shape; very extensively planted. Weighs from ten to twelve pounds. Packet, 5c.; ounce, 15c.; 4 ounces, 50c.; pound, \$1.75.

BUNCOMBE, OR N. C. WINTER—A firm, solid header and keeps well. A favorite in North Carolina. Either a spring or winter cabbage. Packet, 5c.; ounce, 15c.; 4 ounces, 50 cents; pound, \$1.75.

EARLY WINNINGSTADT—A Prussian cabbage; a standard cone-shaped solid head; second early variety. Packet, 5c; ounce, 15c; 4 ounces, 50c; pound, \$1.75.

GREEN GLAZED—For late sowing; glossy green leaves; not so liable to insect attacks, and specially adapted for hot climates. Packet, 5c; ounce, 15c; 4 ounces, 50c; pound, \$1.75.

EARLY LARGE YORK—For very early sowing; an old English variety; heads small and slightly heart-shaped; rather dwarf; can be planted closely—8 inches in row. Packet, 5c; ounce, 15c; 4 ounces, 50c; pound, \$1.75.

PREMIUM LATE DRUMHEAD—Sow in September; very hardy and withstands cold; large round heads, though sometimes flattened on top; well known. Packet, 5c; ounce, 15c; 4 ounces, 50c; pound, \$1.75.

PREMIUM LATE FLAT DUTCH—The old favorite for fall and winter sowing; grows low to ground; heads large, bluish-green in color; broad and flat on top. Packet, 5c; ounce, 15c; 4 ounces, 50c; pound, \$1.75.

EARLY CABBAGE PLANTS.

We offer only in large amounts and direct from our grower on Sea Islands, near Charleston (who grows 150 acres in cabbages). Cabbage plants of Charleston Wakefield (large type), Extra Early Wakefield, Winningstadt, Early Spring, Early Trucker, Succession. Delivery, December, January, February and March, \$1.50 per 1,000 in 1,000 to 5,000 lots; \$1.25 in 5,000 to 10,000 lots. All to be shipped direct from grower by express. We furnish also other plants in 1,000 lots besides cabbage plants.

CARROTS.

(Culture—One ounce will plant a 100 feet row; 3 pounds an acre. Soil must be fertile, deeply dug, and light or sandy. Soak seed well. Sow in drills. Press soil down. Thin to 4 inches, so plants can be worked. Can be used in 70 to 120 days.)

IMPROVED LONG ORANGE—A standard late variety, handsome and uniform in shape; deep orange color; good flavor; yields heavily; requires deep soil; plants should stand 8 inches apart in 18-inch drills for roots to attain full size. Packet, 5c; 1 ounce, 10c; 4 ounces, 20c; 1 pound, 60c.

CHANTENAY—Deep scarlet of uniform shape; a heavy yielder and of fine table qualities; grows 5 to 7 inches long. Packet, 5c.; 1 ounce, 10c.; 4 ounces, 20c.; 1 pound, 60c.

CARROTS FOR STOCK.

(Culture—Sow 3 pounds to the acre. These roots are often 15 inches in circumference. Greatly enjoyed by stock and gives fine color to butter.)

VICTORIA YELLOW—The largest, heaviest cropping and most nutritious yellow variety in cultivation. Easily gathered, as the roots grow largely above the ground. Four ounces, 15c; 1 pound, 40c; 5 pounds, \$1.50.

CELERY.

(Culture—One ounce makes 4,000 plants, 100 feet drill. Four ounces to an acre. Grown here with profit extensively for market. Sow in April, May and June, also in August and September. Transplant when six inches high in three feet rows, six inches in row. When tall

enough they should be covered with earth to bleach. Ready for use in 140 to 175 days.)

BOSTON MARKET—The dwarf, branching variety grown so extensively about Boston. It is unequalled by any other sort; being solid, crisp, and of excellent flavor; its compact, dwarf habit allows closer planting, and requires less earthing-up than taller sorts. Packet, 5c; ounce, 20c; pound, \$1.25.

WHITE PLUME—The stalk, and portions of inner leaves and heart, are naturally white; needs very little earthing-up; crisp, solid, and of a pleasing nutty flavor, while its white, feather-like foliage is very ornamental. Packet, 5c; ounce, 20c; pound, \$1.25.

GEORGIA COLLARDS.

(Georgia grown seed. United States seedmen supplied.)

Georgia grows the Collard Seed for the United States; and the United States comes each year to Georgia for her Collard Seed. We are the largest Collard Seed contractors in the South. Write us, stating quantity. Collards grow three to four feet high; branch out widely and thickly; leaves are cut and boiled as greens, new leaves taking place of old ones cut. Plants stand cold—leaves are more tender and sweet after frost. Every farmer's garden in Georgia grows Col-

lards. Thousands of the negro garden patches grow nothing but Collards.

Culture—An ounce will produce about 2,000 plants, 150 feet row. Sow in spring or summer as directed for cabbage, either in beds, to transplant when large enough, or in rows where intended to stand. Several feet each way ought to be given the plants. Sixteen ounces to the acre.

GEORGIA BLUE STEM COLLARD—The old-fashioned kind, known for a hundred years or more. The type of these have become run down and mixed. We have had our stock grown for us from an improved type. Packet, 5c; ounce, 10c; 4 ounces, 25c; pound, 75c.

GEORGIA WHITE CABBAGE COLLARDS—Whiter and more tender than the Blue Stem. Introduced nine years or more ago. Three-fourths of them bunch or head up in winter. Packet, 5c; ounce, 10c; 4 ounces, 25c; pound, 75c.

MARKET GARDEN CORN.

Plant March and April, or later, for succession, through July. One quart, 20c; hills; 3-4 to 1 peck per acre. Add postage on corns 10c pint; 20c quart.

ADAMS' EARLY—Not sugar corn; small ears for early use. Packet, 5c; pint, 10c; quart, 15c; peck, 90c; bushel, \$3.25.

COUNTRY GENTLEMEN—One of the sweetest of all sweet corns; 3 to 5 ears; kernels deep. Packet, 5c; pint 20c; quart, 35c.

STOWELL'S EVERGREEN—The best late sweet corn in every way. Packet, 5c; pint, 20c; quart, 35c.

MAMMOTH SUGAR—A late variety, with ears of the largest size. Packet, 5c; pint, 20c; quart 35c.

SNOW-FLAKE CORN—The universal Augusta market table corn; white, juicy, productive, and ears as big as field corns. Packet, 10c; quart, 15c; peck, 80c; bus. \$2.50; 5 bus. at \$2.25.

POP CORN—White Rice; Golden Beauty. Packet, 5c; pint, 15c; quart, 20c; peck, 90c; bushel, \$2.75.

CUCUMBERS.

London Long Green.

Early Frame.

White Spine.

All cucumbers Packet, 5c; 1 ounce, 20c; 4 ounces, 75c.



WHITE GEORGIA COLLARD.

EGG PLANT.

The Egg Plant is peculiarly well adapted to our Southern climate and should be in every garden. It makes a delicious dish.

(Culture—One ounce 100 yard row; four ounces to one acre of 3,00 to 4,000 plants. Start seed in hotbeds or boxes in February or March. Set out plants early in warm weather, in rows two by three feet apart.)

NEW YORK IMPROVED PURPLE—Deep, lustrous purple; standard. Packet, 5c; ounce (about 1,000 plants), 25c.

PEARL WHITE—(Seed originated in Georgia.) A large, new, creamy white, delicately flavored Egg Plant. Packet, 5c; ounce, 25c.

KALE.

(Culture—One ounce for 1,000 plants; three pounds to one acre. For winter greens sow from August to October, in drills two feet apart. Thin out to eight inches in row, and cultivate as cabbage.)

DWARF GREEN CURLED—Most tender and delicate of all the cabbage family. Improved by frost. The leaves look like an immense feather. Packet, 5c; ounce, 10c; 4 ounces, 25c; pound, 65c.

LETTUCE.

(Culture—One ounce for 200 feet drill; 1,500 plants; three pounds to acre. Sow in beds almost any month in year. Reset plants ten inches apart in rows. Force to rapid growth if wanted tender. Two crops from one season under glass or frame.)

DEACON CABBAGE—Has large, solid head; Cabbage Lettuce for summer use. Packet, 5c; ounce, 15c; 4 ounces, 40c; pound, \$1.00.

BIG BOSTON—Among the Southern truckers this is more largely grown than any other for shipping. Preferred on account of its great size and solidity. Packet, 5c; ounce, 15c; 1-4 pound, 40c; pound, \$1.00.

SILVER BALL—(Seed white)—The thick, light green leaves have so much sheen that they actually look silvery

white in some lights. The heads are of good size and of excellent quality. Packet, 5c; 4 ounces, 40c; pound, \$1.00.

IMPROVED HANSON—Forms very large, firm heads, resembling cabbage, which are deliciously sweet, crisp and tender; heads green outside and white within; for outdoor culture unexcelled. It is one of the best heat-resisting sorts. Packet, 5c; ounce, 10c; 4 ounces, 40c; pound, \$1.00.

MELON—CANTALOUPE.

(Culture—Make hills four to six feet; plant one dozen seed to each hill after frost. thin to four plants. Pinch back vines. One ounce seed for fifty hills; two pounds for one acre. Ripe in 100 days. Sandy loam best.)

THE NIXON—Georgia grown seed. United States seedmen supplied. Originated in this county, and drove out every other cantaloupe for home and market use. Weighs eight to twelve pounds. Flesh crisp and sweet. Rough skin, good shipper. Deep ribbed. Rind and flesh yellow. Ounce, 10c.; 4 ounces, 25c.; pound, 75c.

ROCKYFORD CANTALOUPE—The most famous melon today in the United States. We get our seed grown for us at Rockyford, Colorado, where we have largest contracts. Melon is small, sweet, and can be eaten to the rind. Distinctive flavor; prolific. 1 ounce, 10c.; 4 ounces, 25c.; 1 pound, 75c. Special prices to heavy growers.

NETTED NUTMEG—Shaped like a nutmeg. Highly scented. Long and well known. Packet, 5c; ounce, 10c; 4 ounces, 20c; pound, 65c.

MUSTARDS.

(All Georgia grown seed. United States seedmen supplied.)

(Culture—One ounce to 100 feet. Sow in fall, winter or spring, in rows or shallow drills. Press earth well down. Ready for use in five or six weeks. One ounce 100 feet; three to five pounds an acre.)

OSTRICH PLUME MUSTARD—(Seed grown in Georgia. United States seedmen supplied.)—Most beautiful mustard

extant. Originated in Augusta, Ga. It is being introduced by us to seed trade of United States. Many of them are putting in novelty lists. Plumes are tender, very long and finely crimped. Pretty as an ornamental plant. Looks like ostrich plumes. Plant large, often 5 or 6 pounds. The most perfect mustard. Packet, 5c; ounce, 10c; 4 ounces, 25c; pound, 75c.



SOUTHERN GIANT CURLED—Highly esteemed in the South, where it is sown in the fall, and produces enormous bunches. Excellent for salad, and very generally used for greens, for which it is largely cultivated. Packet, 5c; ounce, 10c.; 4 ounces, 25c.; pound, 65c.

GEORGIA OKRA.

These seed are grown in Georgia. We can supply the United States seed trade. Large amounts dealt in—spot or contract.

(Culture—One ounce to 50 feet drill; 8 pounds to 1 acre. Sow late in spring in drills 2 feet apart, and leave one plant to every 15 inches. Cover 1 inch deep; use in 90 days.)



NEW DWARF GREEN.

LONG GREEN—Pods are dark green and stalks tall. Packet, 5c; 2 ounces, 10c; 4 ounces, 15c; pound, 40c.

NEW DWARF GREEN PROLIFIC—Early and will bear till frost. Packet, 5c; 2 ounces, 10c; 4 ounces, 15c; pound, 40c.

NEW WHITE VELVET, or LADY FINGER—Tender, white pods; pods round and smooth; a distinct variety. Packet, 5c; 2 ounces, 10c; 4 ounces, 15c; pound, 40c.

PERKINS' LONG PODDED—New; very prolific. The pods are an intense green in color, of unusual length, 9 to 10 inches, very slim and do not get hard, as is the case with other okras. Packet, 5c; 2 ounces, 10c; 1-4 pound, 15c; pound, 40c.

ONION SEED.

Farmers' Bulletin No. 39, Agricultural Department, Washington, D. C., will give culture in detail.

(Culture—One ounce to 100 feet row; four pounds to the acre. For onions sow in February, March, September or October in rich, sandy soil, in drills one to three feet apart. Thin when up to five or six inches. Cover seed half-inch in planting, or sow in hotbeds in winter, and transplant in spring. They grow off quickly. Ready in 100 to 110 days.)

MAMMOTH SILVER KING—Italian; one of the largest; often twenty inches in circumference and four pounds in weight. Flattened in shape and is silver white. Packet, 10c; ounce, 15c; 4 ounces, 50c; pound, \$1.75.

AUSTRALIAN BROWN—Deep, rich brown; egg-shaped. These dug in spring and kept in sheds will keep in summer and not rot. A most valuable onion for the South, where onions once dug rot so early. Packet, 10c; ounce, 15c; 4 ounces, 50c; 1 pound, \$1.50.

BERMUDA VARIETIES—They are of a mild and delicate flavor and keep longer than any foreign variety. Like the Italian varieties, it produces full-grown onions from seed the same season. In the South seed sown in August or September will produce fine, large onions for market in early spring.

RED BERMUDA—Packet, 10c; ounce, 20c; 1-4 pound, 65c; pound, \$2.00.

WHITE BERMUDA—Packet, 10c; 1 ounce, 20c; 1-4 pound, 65c; pound, \$2.00.

ONION SETS.

(32 LBS. 1 BUSHEL.)

We are the largest dealers in Onion Sets. Merchants in Augusta territory can get the lowest wholesale quotations by writing. On retail mail orders, add 10c quart for postage.

(Culture—One quart to 40 feet drill; 8 to 10 bushels to acre. Sow early in spring or September or October, 4 inches in row. 1-2 inch deep—rows 12 to 15 inches apart.

WHITE SILVER SKIN—Quart, 15c; peck, 80c.

DANVERS YELLOW—Quart, 15c; peck, 70c.

WHITE MULTIPLIER—(Grown in Georgia. We are heavy contract dealers. The United States seed trade supplied.)—Grown like potatoes in a hill; yield enormously; productive; mild. Quart, 15c; peck, 75c.

YELLOW MULTIPLYING SHALLOT—(Grown in Georgia. The United States seed trade supplied.)—Plant in September or October. By March or April each shallot has grown into a bunch of forty to sixty shallots. The tops and bottoms together are eaten. When tops die down in May or June, dig and store in dry place. Use as seasoning during the summer. Plant remainder in fall. Quart, 10c.; peck, 50c.

PEARL ONION—Delicate; come off earliest of all; ready for market in January; not good keepers. Quart, 20c; peck, \$1.00.

PARSLEY.

(Culture—One ounce to 100 feet. Soak seed. Sow in spring to fall. Thin out in drills to four inches apart.)

CHAMPION MOSS CURLED—Bright green; beautiful variety. Packet, 5c; ounce, 10c; 4 ounces, 25c; 1 pound, 60c.

PARSNIP.

(Culture—One ounce to 150 feet drill; four pounds to the acre. Drill in spring in rows eighteen inches apart. Thin out to six or eight inches in row.)

HOLLOW CROWN, or SUGAR—Roots long and smooth. The best either for table or stock feeding use. Packet, 5c; 2 ounces, 10c; 4 ounces, 20c; pound, 50c.

GARDEN PEAS.

Our peas are grown for us on the Canada—free from weevils and holes. We deal in them in large quantities at wholesale. If you order sent by mail, add for postage, 5c per half-pint; pint, 10c; quart, 15c. Buy peas for home use always in bulk—not papers.

(Culture—One quart to 150 feet row; 1 1-2 bushels per acre. Peas can be planted here from January to August. Sow in single or double rows, four feet apart and two inches in row. Ready for use in 50 to 90 days.)

FIRST AND BEST, or PHILADELPHIA EXTRA EARLY—Perhaps the earliest pea cultivated. Productive and well flavored. Packet, 5c; 1-2 pint, 10c; pint, 15c; quart, 25c; 1-2 peck, 75c; peck, \$1.25.

ALASKA—A standard variety, and the earliest of all blue peas, proving to be not only several days earlier than most early sorts, but of a larger size, and 10 per cent more productive. Vines grow about 20 inches high, maturing the crop for one picking; of excellent quality. Packet, 5c; pint, 15c; quart, 25c; 1-2 peck, 70c.; peck, \$1.15.

CHAMPION OF ENGLAND—Second early; wrinkled. One of the finest varieties for family use. Standard. Sow thick. Packet, 5c; pint, 15c; quart, 25c; 1-2 peck, 70c; peck, \$1.15.

BIG SANDERS—Resembles Champion of England. Larger and perhaps better. Packet, 5c; same bulk price as Champion of England.

LARGE WHITE MARROWFAT—Main or late crop. A large, heavy pea. A good cropper; grown everywhere. Packet, 5c; 1-2 pint, 10c; pint, 15c; quart, 20c; 1-2 peck, 60c; peck, \$1.00.

BLACK-EYED MARROWFAT—Tall, hard and prolific; abundant fruit; large pea. Packet, 5c; bulk price same as White Marrowfat.

McLEAN'S PREMIUM GEM—Early dwarf, 1 foot high; wrinkled pea; prime favorite. Packet, 5c; pint, 20c; quart, 30c; 1-2 peck, 85c; peck, \$1.60.

PEPPER.

(Culture—One ounce to 1,500 plants; four ounces to the acre. Plant in early spring in hotbeds or boxes. Set out in rows two feet apart and eighteen inches in row.)

✓ **SWEET GOLDEN DAWN, or GOLDEN BELL**—Bell-shaped; mild flavor; golden yellow. Packet, 5c; ounce, 15c; 4 ounces, 60c.

✓ **BULL NOSE, or SPANISH MONSTROUS**—A favorite for pickling or for mangoes. Rind thick and fleshy. Packet, 5c; ounce, 15c; 4 ounces, 60c.

✓ **LONG RED CAYENNE**—A bright red, hot variety of conical shape. Packet, 5c; ounce, 15c; 1-4 pound, 60c.

RADISHES.

(Culture—One ounce to 100 feet; three pounds to acre. Sow in drills in early spring, and to June for succession. Thin out as needed. Row 12 inches apart. Sow also in early fall or winter.)

✓ **LONG SCARLET SHORT TOP**—Packet, 5c; ounce, 10c; 4 ounces, 20c; pound, 50c.

✓ **EARLY SCARLET TURNIP**—Packet, 5c; ounce, 10c; 4 ounces, 20c; pound, 50c.

✓ **FRENCH BREAKFAST**—Small scarlet, olive-shaped. Packet, 5c; ounce, 10c; 4 ounces, 20c; pound, 50c.

✓ **ROSE CHINA**—Best fall and winter variety. 1-4 pound, 20c.; pound, 50c.

RAPE, OR GEORGIA SALAD.

(Culture—One ounce to 50 feet; drill thick in spring, rows two feet apart; or sow in August and September and October; 10 pounds acre.)

The best of fall or spring greens when boiled. Thin out when 6 to 8 inches high to 6 inch plants and cook. Afterward cut off remaining tops when 12 inches high, 6 inches above ground and use. Tops grow out again for other cuttings. When sown in fall greens may be cut in about six weeks. Price, 2 ounces, 10c; 8 ounces, 20c; 1 pound, 35c.

SALSIFY, OR VEGETABLE OYSTER.

Sow in early spring on light, rich soil, in drills fourteen inches apart, and thin the plants to six inches in the row. The roots will be ready for use in October, and will sustain no injury by being left in the ground during the winter. Sow also in September and October; 1 ounce for 75 feet row. Ready for use in 140 days.

✓ **SANDWICH ISLAND MAMMOTH**—This new Salsify grows nearly twice the size of the old sort, and is superior in quality. Packet, 5c; ounce, 10c; 1-4 pound, 30c; pound, \$1.00.

SPINACH.

(Culture—One ounce to 100 feet drill; 20 pounds to acre. For winter, sow in drills one inch deep, rows nine inches apart. In September and October thin out by using for table. For summer use sow in spring. A good crop all the year. Ready for use in 35 days.)

✓ **BLOOMSDALE SAVOY CURLED LEAF**—Large, bright green curled leaf; stands worst winter. Packet, 5c; 2 ounces, 10c; 4 ounces, 15c; pound, 30c; 5 pounds at 25c.

SQUASH.

(Culture—One ounce to twenty-five hills; four pounds to one acre. Sow in hills same time as cucumbers and melons. Bush varieties three to four feet apart; running kind six to nine feet apart.)

✓ **EARLY WHITE BUSH SCALLOP**—Early, well known by all. Ships well. A summer dwarf. Packet, 5c; ounce, 10c; 4 ounces, 25c; pound, 75c.

✓ **SUMMER CROCKNECK**—Early; fruit yellow. Hard shell, warty excrescences. Packet, 5c; ounce, 10c; 4 ounces, 25c; pound, 75c.

TOMATOES.

(Culture—One ounce to 1,000 plants; 8 ounces, one acre. Sow in hotbeds or boxes January to February. Transplant 3 to 3 1-2 feet apart after frost, when two inches high in open ground. Succeeds 50 per cent better when trained to

sticks or frames. When thus trained all limbs (they appear in axil between leaf branch and stalk) must be pinched off. This method leaves the little fruit stems and the larger leaf branches. The vine will thus grow ten feet high and fruits to the top as season advances—till frost.)

THE NEW STONE TOMATO—Its solidity and carrying qualities are in advance of any other sort now known; color rich red; shape perfectly smooth and thicker from stem to blossom end than most varieties. Large in size and heavy cropper. Packet, 5c; 1 ounce, 20c; 1-4 pound, 65c; pound, \$2.00.

LIVINGSTON'S FAVORITE—Large, smooth, productive; good shipper. Does not crack open. Packet, 5c; ounce, 20c; 4 ounces, 65c; pound, \$2.00.

NEW EARLY ACME—Pinkish purple; heavy bearer; round, solid, medium size. Bears till frost. Thin skin. Packet, 5c; ounce, 20c; 4 ounces, 65c; pound, \$2.00.

IMPROVED TROPHY—We offer our Improved Trophy as a sort whose large, strong growing, vigorous and productive vine, very large, very solid, smooth, fine flavored and beautiful deep, rich red fruit will satisfy the most exacting. Packet, 5c; ounce, 20c; 4 ounces, 65c; pound, \$2.00.

SELECTED PARAGON—A second early; bright crimson; resembles the Acme in size and shape; bears transportation; fine canning tomato. Packet, 5c; ounce, 20c; 4 ounces, 65c; pound, \$2.00.

GOLDEN QUEEN—Yellow flesh; superior, distinct flavor; beautiful fruit. Packet, 5c; ounce, 20c; 4 ounces, 65c; pound, \$2.00.

TURNIPS—SPRING SOWING.

We make large annual growing contracts in Turnip Seed. Can supply the trade at lowest wholesale prices.

(Culture—One ounce for 200 foot drill; 1 1-2 pounds, one acre. Sow in drills which are twenty-four inches apart. For fall and winter turnips, from July 20 to September 15. Thin to six inches.)

EARLY WHITE FLAT DUTCH—Strap-leaf; spring sowing. Packet, 5c; 2 ounces, 10c; 4 ounces, 15c; pound, 40c.

EARLY PURPLE TOP—Strap-leaf; spring sowing. Packet, 5c; 4 ounces, 15c; pound, 40c.

TURNIPS—FALL AND WINTER USE.



SEVEN TOPS—(Seed grown in Georgia. United States seed trade supplied.) Named because of the habit of stooling or branching into seven tops. Makes a great amount of greens or salad. Do not make big roots. We are Southern headquarters for Seven Tops. Price, 2 ounces, 10c; 1-4 pound, 15c; 1 pound, 40c.

GEORGIA FROST KING, or SOUTHERN PRIZE—The coming turnip for the South. Not winter killed. Large, white turnip, that is excellent, lasting through winter and till late in spring, when other turnips are pithy. This turnip is both large and tender, and finely flavored. Superior foliage to other white turnips. It also provides foliage or greens as luxuriant and branching as Seven Top. Price, 2 ounces, 10c; 1-4 pound, 15c; 1 pound, 40c.

THE FOLLOWING WINTER TURNIPS—We price all, 2 ounces, 10c; 4 ounces, 15c; 1 pound, 40c:

YELLOW IMPROVED PURPLE TOP RUTA BAGA—Of fine strain.

LARGE EARLY WHITE RED TOP GLOBE.

LARGE WHITE NORFOLK, or GLOBE.

POMMERANEAN WHITE GLOBE.

WHITE EGG.

YELLOW ABERDEEN.

YELLOW, or AMBER GLOBE.

LARGE COW HORN.



COW HORN.

WATERMELONS.

All these seed grown in Georgia. United States seed trade supplied. We are in the largest and the very best melon shipping district in the United States. Augusta inaugurated in 1867 melon shipping business Northward. Our seed are taken from twenty pound melons and above—eight to ten melons to one pound of seed. We sell to the largest growers and largest seedmen in United States. Northern and Western seed not good here. Northern seed makes 6 or 8 small melons to vine, while Georgia seed makes 2 or 3 big ones. If you want good amounts of any melon grown for 1905, write us.

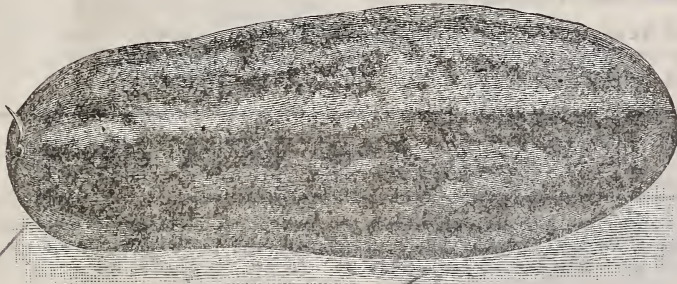
(Culture—Dig holes ten to twelve feet each way, two feet deep and fill with fresh mould and manure. Plant in spring ten seeds to hill and thin out to two; 2 pounds to an acre; 1 ounce for thirty hills.

Ounce, 10 cts; 4 ounces, 30 cts.; pound, 90 cts.

KLECKLEY'S SWEET—This is one of the finest melons in cultivation. The vines are strong growing, producing uniformly large sized melons. The fruits are oblong. The skin is dark green. Flesh is bright scarlet and ripens to within one-half inch of the rind. The quality is very rich and sweet, hence its name.

For the home market or family garden it is decidedly one of the best. We have choice seed. Ounce, 10c.; 1-4 pound, 30c.; pound, \$1.00.

THE JONES MELON—Rind dark; flesh bright red; almost round in shape; rind trifle thicker than above melons; 65 to 70 pounds frequent size for this melon. Originated near us only a few years ago, yet it has sprung into widest popularity, and is listed in all United States catalogues as one of the very best. Ounce 10c; 4 ounces, 30c; pound, 90c.



GEORGIA RATTLESNAKE WATERMELON.

GENUINE AUGUSTA RATTLESNAKE

—This melon seems to deteriorate the second year when grown elsewhere than in this county. It originated here at Augusta and is the most advertised of all melons. The genuine seed should be had each year from this county. This was the original melon shipped North in 1867, which so whetted the Northern appetite for watermelon. Is an elongated gray with green stripes. Good size. Seed white with black ears. Fresh, crisp and excellent. A choice home melon. Ships with careful packing. Ounce 10 cts.; 4 ounces, 30 cts; pound 90 cts. Ours are the highest type of seed.

AUGUSTA SUGAR LOAF—A greenish white, elongated melon with crisp red flesh, with as thin a rind as Rattlesnake. Grows to an immense size—a whole market wagon load running often to sixty pounds each. Originated around Augusta. It's a beauty to look at and a delight to eat. Never has gourd ends.

PRIDE OF GEORGIA—An exceedingly large, round, green melon; flesh crisp and red. You will find occasionally on it small rough, slightly scaly spots. This melon is close kin to the Jones melon. Ounce, 10c.; 4 ounces, 30c.; pound, 90c.

EDEN MELON—This melon by shippers is thought to be better than Kolb Gem. This melon has such a tremendous sale that we have had a large amount grown for us of high grade seed and can supply all demands. Has white seed. Bluish cast melon and elongated. Larger than Kolb. Ounce, 10c.; 4 ounces, 30c.; pound, 90c.

BLUE GEM, OR GLOUSSIER, OR BLACK BOULDER—As good a shipping melon as Kolb Gem. Quality far better flavor and sweeter. A far better keeper. Somewhat longer and heavier than Kolb Gem. Very dark bluish green rind, small grayish stripes. Bright red flesh. Seed black. The largest melon shipper.

possibly in the South, says: "I ship yearly two hundred and fifty cars—three hundred thousand melons. I regard Blue Gem as good a shipper as Kolb Gem, while quality of meat is far better. Will keep longer than any known melons." Ounce, 10c.; 4 ounces, 25c.; pound, 85c.

TRIUMPH—Has given almost universal satisfaction for shipping and market purposes. The rind is dark green color, with indistinct stripe, flesh deep crimson, ripening up evenly and of very fine quality. The largest of all melons—sometimes have weighed 120 pounds. Ounce, 10c.; 1-4 pound, 30c.; pound 90c.

CAROLINA BRADFORD—This melon is a favorite in the section of South Carolina where it has been grown. The melons grow to a large size, rind dark green with darker stripes; flesh red and remarkably tender and sweet. It is an excellent melon for home use. Ounce, 10c.; 1-4 pound, 25c.; 1 pound, 85c.

KOLB GEM—Color a dark green, bright stripes; very nearly round; rind thick. Insuring perfect shipping qualities; flesh

of a medium red and firm. Thirty pounds is a fair size. This is the standard universal shipping melon in the United States. One ounce, 10c.; 4 ounces, 25c.; pound, 75c.

FLORIDA FAVORITE—This has long been a prime favorite for home consumption. It ripens early, has dark skin with light green stripes and crimson flesh; exceedingly sweet. Ounce, 10c.; 4 ounces, 25c.; pound 85c.

WARNING TO SEEDMEN, AS TO MELON SEED.

We warn Northern and Western seedmen from selling to their Southern trade watermelon seed grown in the States of Oklahoma and Kansas, and other Western States. Such seeds produce melons in the South with hard, white spots in the hearts. The melons do not mature. Thousands of dollars were lost to Southern growers from these seed. Augusta seed better than Florida—no salt air in them.

FORAGE AND HOG CROP.

The South has a world of wealth in her varied Forage Crops. Their usual culture is simply to sow in April thinly in drills—rows three feet apart—cutting the plants and feeding it when two or two and a half feet high and recutting it as it grows out; three to six cuttings a season.



EARLY AMBER SORGHUM—(Fifty lbs. to bushel)

—We wholesale this in large amounts in Augusta territory. We handle Sorghum in car lots. We wholesale few things in our house in larger quantities than the Sorghum. Almost distinct cultures. First: most distinct culture. First: Green forage. Second: Cutting it when ripe and saccharine and feeding it to stock, or for storing it for them. Third: Grinding it for syrup. This is the earliest Sorghum. Sorghum is not appreciated in Georgia as it is in the West, and in Texas and Tennessee. We have had trouble in getting pure amber seed. This year we have a splendid reliable grower. Do well sown with cow peas broadcast, or can be broadcast alone. Sow twenty

pounds to one acre, if in drills, for forage, and one bushel broadcast per acre; ten pounds in drill for syrup. The growing of Sorghum all through the South and West is increasing largely each year. One pound, 10c.; 10 pounds for 50c.; 1 bushel, \$1.50; 5 bushels at \$1.35.

EARLY ORANGE SORGHUM—Georgia Experiment Station makes total three cuttings green forage per acre, 42,018 pounds. This type of Sorghum is a good bit larger than Amber and where prime earliness is not considered it may be the better cane. Same price as Amber.

PEARL OR CAT-TAIL MILLET—(Pennisetum Specatum)—Known also as Pencilaria; Horse Millet; Japan Millet, and Maud's Wonder Forage Plant. These seed grown in Georgia. The United States seedmen supplied in largest amounts. We are largest dealers. No other plant makes so much forage as this. Seven cuttings can be had from one planting about Augusta in one season. Total of three cuttings green forage per acre at Georgia Experiment Station, 52,416 pounds, equals 10 tons cured fodder. Drill 10 pounds to acre in 3 ft. or closer rows; 25 pounds if for hay. Plant in

spring. Stools at ground. Thick foliage. Heads not eaten. This is by far the most popular of all the green eaten millets. Cat-tail Millet is not saccharine. Not sold by bushel. One pound, 15c.; 5 pounds at 14c.; 10 pounds at 12c.; 50 pounds at 10c.

GEORGIA NATIVE (Augusta, Ga.)

RYE—(Secale Cereale)—Seed trade supplied. 56 pounds to bushel. We have had for years a heavy merchant trade, even into other States, for this rye. We shall grow this year a very large crop of the highest type. This rye stools heavily. Can be grazed several times, and then allowed to go to seed. If cut and fed green, it has made ten tons green food in five months per acre. Rye grown in Tennessee, Virginia, Middle or Western States is cheaper, but it is spring sown and runs on the ground, and is slow growing, and is no good here. It is a different type of rye. Plant in September or October and to December one bushel per acre. Bushel, \$1.60; sack, \$1.50 bushel.

GEORGIA BEARDED BARLEY—(Hordeum Sativum)—48 pounds bushel. Sow 1 1-2 bushels to acre. Best in fall, though can be sown in spring. Excellent fall, winter and spring pasturage. Continuously grazed. Dense foliage and strong and nutritious food. Yields largely of grain. Can be cut for grain two weeks earlier than wheat. One peck, 40c.; 1 bushel, \$1.35; sack, \$1.25 bushel. Sow only Georgia grown seed.

GEORGIA BEARDLESS BARLEY—(48 pounds bushel.)—United States seed trade supplied. Sow in August and cut in October, or sow for spring use in February. Ripens in June or before. A new magnificent type. Makes fine grazing and a big yield of seed, 45 bushels or more per acre. Ripens earlier than bearded, and is taller, larger and stiffer. Being beardless is easily handled and can be fed to stock same as oats. Is six rowed; hull remains tight; long head. Ripens 60 to 90 days. February planting makes quickest and best of all spring forage. 1 bushel, \$1.60; sack, \$1.50 bushel.

CHUFAS—Georgia grown seed. United States seed trade supplied. Forty-four pounds bushel. Plant one peck to acre. Soak seed a week. Plant twelve inches apart in rows two and a half feet apart. Do not bed or hill up. Give two plowings and hoeings. If you get a bad stand pull out shoots from growing plants and plant and use these. Grow just under the surface like all grass nuts. Invaluable for fattening hogs. Turn hogs in patch. Mature in September and lie in ground till eaten. Quart, 25c.; peck, \$1.50:

SPANISH PEANUTS—(28 pounds to bushel)—Georgia grown seed. United States seed trade supplied. Much written about as a hog crop. Two hundred bushels per acre. Plant about two bushels per acre. March or July. Follow after oats, or plant two crops, March and July in same ground; no pops. Plant close in sandy lime lands. The tops are good forage. Peas easily harvested, as all peas hang to roots as plant is pulled up. Hogs can be turned in, or the whole vine can be fed all winter from the storage barn. A high Georgia farming authority says that we could revolutionize our agriculture if in the corn row between the stalks we would plant a hill of cow peas, and in the middle furrow row of Spanish peanuts. Bushel, \$1.60; five bushels at \$1.35. Used also for parching.

MAMMOTH PEANUTS—(22 pounds to bushel)—We are large contractors. This is the usual big peanut and is much bigger than Spanish. Most often used for parching. Same price as Spanish.



TEOSINTE.

TEOSINTE—(Euchlaena Mexican)—United States wholesale seed trade supplied.) Many growths per season. Mississippi Experiment Station reports twenty-two tons per acre green forage product. One seed makes thirty to fifty stalks or stools. On rich land grows fifteen feet high, and produces a larger amount of forage than any known plant.

Have seen 225 pounds forage from one seed. 10 per cent saccharine. Seeds only in extreme South. Plant in April, 5x6 feet; cultivate as corn. It takes 85 degrees heat to germinate Teosinte. We are large dealers. One ounce, 10c.; 1-4 pound, 25c.; 1 pound, 80c. Two pounds, one acre.

GERMAN MILLET—Choice Tennessee grown. Variety of *Chaetochloa Italica*. Western or Northern grown seed no good here. The true German Millet, when properly grown and handled, makes an enormous yield of most nutritious feed, and that without impoverishing the soil to any great extent. To get these results, however, German Millet must be sown thickly, about one bushel per acre, and the crop cut while it is in bloom, before the seed hardens in the head. Sow when the weather gets warm in May or any time during summer until end of July. Two crops can be seeded and grown during the summer on the same land. Good hay combination with cow peas, one peck Millet, 1 1-2 bushels peas. Get prices.

VELVET BEAN—(*Mucuna Utilis*).—(Seeds only in extreme South. United States seed trade supplied.) Great mulch crop in orange and peach orchards. A powerful soil enricher on poor soil. Frost killed vines or dry hay relished by all cattle. Yield good mulch even when cut for hay as bottom leaves fall when ripe. For replenishing worn out land large growers say it largely excels cow peas. Vines form a mass three to four feet high and run twenty feet or more. Plant in spring or early summer, three feet by five feet, several beans to hill; one peck to acre; cultivate like cow peas in every way. We are the largest contractors of Velvet Beans in the South; sold good amounts last year to Louisiana for green soiling for sugar cane fields. One quart, 15c., postage extra, 15c.; 1 peck, \$1.00; 1 bushel, f. o. b. Augusta, \$2.50. Get prices in big amounts.

KAFFIR CORN—It makes a large growth of foliage, and is also particularly valuable on account of its yield of grain, which makes most nutritious feed, both for feeding to all kinds of stock and to poultry. Very generally sown with cow peas, broadcast, at the rate of a peck of Kaffir corn to a bushel of cow peas per acre. Sown in this way the Kaffir helps to hold up the cow peas off the ground, and thus causes a large growth of cow peas, and both can be cut together, mak-

ing an enormous yielding crop of most nutritious feed. For a forage crop, when sown by itself Kaffir corn should be sown broadcast at the rate of from three-quarters to one bushel per acre, or drill peck per acre; good for 3 or 4 cuttings. Pound, 10c; peck, 75c; bushel (50 lbs.), \$1.75.

MILLO MAIZE—A variety of Sorghum, non-saccharine, growing stalks eight to ten feet high. It bears dry weather and makes its crop where corn would wholly fail. Plant in 3-foot rows, leaving one or two plants every 12 inches in the row, and cultivate as corn; 5 lbs. per acre; stools heavily, 5 to 6 stools from each seed. Can cut green many times. One of the heaviest producers known for the silo. Pound, 15c.; 5 pounds, 50c. (50 lbs. a bushel.)

HORSE TOOTH SILO AND FODDER CORN—The kind universally used. Largely used about Augusta by dairies. Drill lightly. 1 peck, 50c.; 1 bushel, \$1.75. (1-2 bushel per acre.)

WHITE RICE POP CORN.—GOLDEN QUEEN POP CORN—Valuable forage plant drilled. (Peck to 1-2 bushel per acre.

Pint, 15c; quart, 20c; peck, 90c; bushel, \$2.75.

BEGGAR WEED—(*Desmodium Tortuosum*).—Legume. Grows four to eight feet high. Abundant leafage. Sow 10 pounds per acre. Barely cover. Drill or broadcast seed or sow in June rains on top ground in corn rows at last cultivation. Can cut several times or pasture late summer and fall. Cut for hay at blooming time with mower. Yields four to six tons fine hay. Reseeds itself. Easily eradicated. Is in way of no crop. In worn pine land it has no superior. One pound, 30c.; 6 pounds for \$1.50; 10 pounds for \$2.25.

DWARF ESSEX RAPE—(*Brassica Napus*)—In England and Germany this is the universally grown forage crop. Sown for pasturing lambs and sheep, and also for cows—no crop equals it. No crop is so fattening—a lamb growing seven or eight pounds a month. Drill ten pounds per acre in spring or fall through October—or 25 pounds broadcast in damp lands—or drill in rich uplands. Sown in August it makes in two months an enormous amount of green food, two to three feet high and branching. This is deserving of largest growing for green cattle food in winter when Rye is almost only thing to

be had. Does not make milk "taste." Acre will fatten 20 sheep in 2 months, 1-3 acre will feed 10 hogs 2 months. Can be grazed or cut 3 or 4 times. Never cold killed. One pound, 15c.; 5 pounds, 65c.; 10 pounds, \$1.00.

JERUSALEM ARTICHOKE—Georgia grown. Widely advertised as a hog crop. Even in five feet rows roots run from row to row and make tubers—the underground being a net work of artichokes. Tubers will stay in ground all winter and not freeze. Turn in hogs at any time. If not eaten too close crop will come up in spring without second planting. Used also for pickles. Cut tubers like Irish potatoes and plant after frost—one piece every three feet. In four or five feet rows. Three bushels, one acre. Sold only in 3 bushel lots (1 bbl.) in February for \$3.50 bbl.

RUSSIAN SUNFLOWER SEED—Sow in spring five pounds to one acre. Great improvement over the small sunflower. Some are eighteen inches in diameter. Ornamental. Large seeds. In Russia used for oil. Known here as the best of all poultry foods—forty to fifty bushels per acre. In cities it is the parrot's food. We keep this seed in large quantities.

Two ounces, 5c.; 1-2 pound, 10c.; pound, 15c.; 5 pounds, 50c.

CASSAVA—(Manihot Aipi)—A luxuriant annual, resembling in looks the Castor Oil plant, many branching, growing 4 to 6 feet high, and whose roots in fall and winter are dug and chopped and are greedily eaten by cattle, or are made, as in Florida, into starch. Plant in 4-ft. checks, one sound seed cane in each check—covering 2 inches deep—in February or March, and in sandy soils. Cultivate shallow until plant shades ground. Roots grow near surface and grow to 4 feet in length, filling the underground between checks. Just before frost cut down tops 1 foot from ground and cover same in trenches (discarding the leaves) for next year's seed. Cut stem and big branches with axe 4 to 6 inches long at planting time. Dig the roots for feed during fall and winter as wanted. They do not keep but 3 or 4 days. These grew well in 1903 at Richmond County Reformatory, Augusta, Ga., making roots by frost as big as one's wrist, and in many cases, 4 feet long. Prices, 1,000 running feet, for one acre, \$5.50. For one-half acre, \$3.00. 100 feet, for one-tenth of an acre 75c., all by express.

Miscellaneous Field and Farm Seeds.

FIELD CORNS—We make a specialty of Field corns—wholesaling them in large quantities to merchants in Augusta territory at lowest prices. Six quarts to acre; bushel, 56 pounds; unshelled, 70 pounds. Write for wholesale prices. Postage, extra, pint 10c. quart, 15c.

PENNSYLVANIA YELLOW DENT CORN—We do an immense business in Dent corns with Augusta territory merchants. Well known. Our earliest field corn. Meal can be had from it latter part July, being thus valuable to farmers. The sowing of Dent corn increases each year. Its earliness makes it invaluable. It loses earliness if native seed are sown. Buy fresh seed each year. We have all of our corn seeds grown for us in extreme northern part of Virginia—just the proper latitude. We believe in size of grains, etc., we sell the best Dent corn in the South. On quart, 15c.; 2 quarts for 25c.; peck, 60c.; bushel, \$1.65; sack, 2 1-2 bushels, \$1.50 bushel; 5 bushels, \$1.40 bushel.

PENNSYLVANIA WHITE DENT CORN—Same as above, only grain is white—which some prefer. Same price as Yellow Dent. Many plant this for early garden use. Grown for us in largest amounts in Northern Virginia. We lay great store by the superiority of this North Virginia corn as sent out by us. For early farm corn nothing takes the place of Dent corns. They come on for the farmer in the nick of time. Same price as Yellow Dent.

COCKE'S PROLIFIC CORN—Originated by late General Cocke. The best corn known in Virginia. Flinty, white, heavy. Two to seven ears. In swamps it has grown 140 bushels shelled corn per acre. We get our seed from North Virginia. This corn stood highest test at Georgia Experiment Station for several years, and also other Southern State Experimental Stations. This corn has given great satisfaction here for several years. Medium early. One quart, 15c.; 2 quarts, 25c.; peck, 60c.; bushel, \$1.75.

✓ **GOURD SEED CORN**—Same price as Cocke's.

✓ **MARLBORO PROLIFIC CORN**—A beautiful white Prolific Corn. Medium early, well adapted to both field and table purposes, just flinty enough for milling most beautiful hominy and meal. From practical experience and field test, Marlboro Prolific is one of the best of all prolific varieties; yields often from 2 to 4 large ears to each stalk. Same price as Cocke's.

✓ **MEXICAN JUNE CORN**—(Georgia grown)—(United States seed trade sup-

plied)—Do not plant before June 1st to 15th. Grows ten to fifteen feet high. Full eared; large blades; fine ears. No other corn can be planted so late as this. No other corn grows so tall and makes such an amount of late forage. Does not make any ears till September. Give it time. Its great value is that you can have roasting ears in September and October and till frost, which no other corn gives. Don't pull till December. Corn till then does not harden on stalks—keeps green and soft. Several ears to stalk. Remaining stalks give fine green forage for cattle. We are largest contractors in Georgia. Quart. 25c.; peck, 90c.; bushel, \$2.75.

GEORGIA COTTON SEEDS.

We list more cotton seed than any house in the world. We are in position to stock up United States seedmen with almost any variety and in any quantity. Highest grade. Augusta is the second largest inland cotton market in the world, and the largest cotton manufacturing city in the South. Cotton 30 lbs. to bushel. We have supplied the United States Agricultural Department for many seasons for their free cotton seed distribution. We export to all portions of the world cotton seed.

KING'S COTTON SEED—(Short Staple)—The earliest cotton in United States. Its habitat is highlands of North Carolina—the highest cotton latitude and highest railroad attitude in



EXCELSIOR PROLIFIC COTTON.

the South. We get our seed in car lots from above North Carolina habitat—re-shipping from Augusta. We shipped December, 1903, about 12,000 bushels into Texas. Type, latitude and altitude all conduce to making King's as sold by us the earliest known cotton. The great Texas demand for this seed for 1904 crop—about 500 cars—and the fact that futures indicate that August lint will fetch 13c. to 15c., give King's a prominence and a value never held heretofore by any cotton. The whole South will largely plant it to get this early assured high price. King's opens in Texas July 15, and in Georgia about two weeks later, and rushes its whole crop quickly to maturity pretty well all out in August. It is prolific—the writer made 1 1-4 bales per acre in 1903. Boll is medium; seed very small and green-white. Stalk not tall—pyramid shaped. Is apt to make a second and top crop and new growth. Can be planted after grains and Irish potatoes are off the ground, and will make good crop. King's is largely immune to Anthracnose fungus and also to boll worm. It is destined to be the salvation of Texas in the Mexican boll weevil districts. Much inferior miscellaneous seed are being sent out by North Carolina oil mills and ginneries. Our seed can be relied on. Plant King thicker than other cotton. On account of altitude and latitude, of North Carolina. Texas should come every year henceforward for these seed in preference to Texas seed.

Houston, Texas, March 3, 1902.

Dear Sir:—It affords me great pleasure to testify to the excellency of King's Improved Cotton Seed, I have planted these seed for the last two years on my various plantations, and unhesitatingly state that it is the best adapted cotton to our bottom and prairie lands I have ever used. Two important characteristics of this cotton are its earliness and productiveness, which enables the planter to overcome, in a measure, the ravages of drouth and worms. On average soil this cotton will produce double what other improved cotton that I have tried does, and it is easily plucked and good staple. I recommend the use of this seed to our planters generally.

Very truly,

T. W. HOUSE.

We offer this North Carolina stock f. o. b. Augusta: 1 bushel \$1.10; 5 bushels at 75c.; 10 at 70c.; 25 at 65c.; 50 at 63c.; 100 bushels at 60c. Will price car lots as wanted, either f. o. b. North Carolina or Augusta. Freight North Carolina to Texas 1,000 bushel, car lots, to March,

14 4-10c. per bushel. Less than car lots is 33c. bushel, Augusta to Texas. Will contract now for shipments year hence for 1905 crop f. o. b. North Carolina car lots or less. You can save big money by contracting now for your winter shipments—car or less amount. Tell us your wants. Get quotations. We quote all cottons sacked.

TOOLE COTTON—(Short Staple)—Originated some half dozen years ago at Augusta. Today half of our best planters in this county grow it. A cross between King and Peterkin—has good qualities of both. Earlier than Peterkin; taller and larger than King and bigger balled. Three large limbs near roots parallel with the ground. Seed green-white, medium size. Magnificently productive. Comes early and holds on fruiting till late. Fine results on poor land. Stands drought and negro usage. Gins 40 per cent. An up-to-date cotton. Discard your older types for this fine new type. Prices, 1 to 100 bushels same as King's.

PETERKIN IMPROVED COTTON—(Short Staple)—This cotton is grown about Augusta more, perhaps, than any other kind. Excellent staple. Small seeds. Branching, open growing and prolific. Ten per cent. of the seed slip their lint—that is, are free wholly of lint, and are smooth and bare. To uninitiated the seed look mixed. Yield of lint is about 40 per cent. This cotton fruits the whole season. A partial dry season does not largely affect the crop. Distributed by United States government in free seeds many years. We know no better standby in the list and recommend it highly. A tough, hardy cotton good for hard negro usage, poor and drouthy lands. 1 to 100 bushel lots same as King's.

RUSSELL'S BIG BOLL PROLIFIC COTTON—(Short Staple.)—Grows a strong, vigorous stalk. Has an abundant foliage and when planted in good soil produces a stalk from 4 to 6 feet high, from which, spring near its base 2 long limbs upon which the bolls grow in clusters. Just above these limbs on four sides of the stalk other shorter limbs grow and continue to form to near the top, and upon these shorter limbs the bolls also grow in clusters, while scattered in between these limbs there appears a short stem with from 2 to 8 bolls upon each stem. Bolls are large, with from 4 to 5 locks, well set in the burr,—50 average bolls weigh one pound, and as many as 100 bolls per stalk being no un-

common yield. Lint is smooth and strong, yielding 33 1-3 per cent. lint, 66 2-3 seed. Seed are dark green. We are agents for the originator—car lots if wanted. 1 bushel, \$1.25; 5 bushels \$5.00.

WILLET'S RED LEAF COTTON—(Extra Staple—1 inch.)—Origin unknown but introduced several years ago from an Illinois garden; used there as an ornamental plant; and such truly it is, for a field of it is a sight not to be forgotten. It possesses the remarkable and beautiful characteristic that every leaf and limb and stalk, and three-fourths of every boll is a brilliant deep shade of maroon, of the color of Colea leaves. Another characteristic is that for two years, as compared with surrounding fields, it has not been subject to rust nor August deterioration and seems almost wholly resistant to drought—a peculiarly sturdy plant. The stalk is taller than most cottons, many limbs curving upwards; well fruited, making one and one-quarter bales this past year to the acre. Many bolls have five locks. Seed quite small and greenish. The lint is noticeably a particularly heavy and strong, 1 inch long (1-16c. to 1-8c. premium), resembling wool in strength. The pretty and odd flower is deep pink (not white), later turns deep red. Supply limited. One pint, postpaid, 25c.; quart, postpaid, 40c.; one peck \$1.00; half bushel, \$2.00; bushel \$3.50.

EXCELSIOR PROLIFIC COTTON—(Short staple)—A distinct new variety, and surpassed by none; will please the most fastidious and skeptical. Early maturing, easily picked; cotton as early as Kings. Fruits closer and faster than any cotton on earth; large bolls, small seed; clusters well around stalk with a few large limbs near bottom; grows tall, with long tap root; will withstand drought better than other varieties; won gold medal for cotton at Charleston Exposition; stands second to none in practical field tests at Clemson College, S. C., Experimental Station. Stalks uniform and similar one with another. Seeds direct from originator. Price, 1 bushel, \$1.50; 5 bushels, \$6.25; 10 bushels, \$10.00.

HAWKINS COTTON—(Short Staple)—Distributed many years by United States government in free seeds. Three large limbs at bottom. Being a tall grower it has a long tap root, which resists drought well. Small seed—some light gray, some green. Yields 33 to 40 per cent. Big bolls, gathered easily. Prolific lint. Big bolls, gathered easily. Prolific.

A cut before us from Hawkins' Cotton from life shows over 400 bolls, well developed, on one stalk. Our seeds are absolutely pure. Bushel, \$1.25; 5 bushels, \$5.00.

TRUITT'S BIG BOLL COTTON—(Short Staple)—This is a distinctive cotton with its big seed and its big bolls, making gathering easy. Some of the most scientific and best posted farmers in Georgia grow nothing else. Bushel, \$1.25; 5 bushels, \$5.00.

CULPEPPER'S IMPROVED BIG-BOLLED PROLIFIC COTTON—(Short Staple)—One of the best cottons known. It ranks first at the Georgia Experimental Station. It stands drought longer than any variety in existence, and is well suited to all sections from the northern to the southern cotton belt. It does well any season, and on any soil. Has made as high as three bales to acre. The bolls being unusually large, costs about 25 cents per hundred pounds for picking—hands gathering one-third more than from many other varieties. While the growth is rapid, it holds on through the season, yet maturing early. It turns out more lint than any big-bolled variety known. The fiber is long and silky—bringing the highest price in the market. The bolls are large and round, containing five locks to the boll. It stands the storm unusually well, the limbs being short and the bolls clinging close to the branches. Agents for originator. One bushel, \$1.50; 5 bushels, \$6.25.

JONES' IMPROVED COTTON—(Short Staple)—A great favorite with the Agricultural Department at Washington; has been distributed by them for a long term of years. Large plant, large boll, and lint that is exceedingly strong. Prized by thread mills. One bushel, \$1.25; 5 bushels, \$5.00.

TEXAS OAK—(Short Staple)—A new cotton with good record, known also as Brown Seed Peterkin. One bushel, \$1.25; 5 bushels, \$5.00.

SCHLEY'S IMPROVED—(Short Staple)—A new cotton. Fine record at Experiment Station. One bushel, \$1.25; 5 bushels for \$5.00.

CHRISTOPHER IMPROVED—(Short Staple)—Well advertised and popular. A new cotton. One bushel, \$1.25; 5 bushels, \$5.00.

HERLONG—(Short Staple)—An old time green-seed cotton; still liked. One bushel, \$1.25; 5 bushels, \$5.00.

JACKSON'S LIMBLESS COTTON—(Short Staple)—Widely advertised and controlled several years by syndicates. Almost limbless; very tall. Bushel, \$1.25; 5 bushels, \$5.00.

LONG STAPLE SEA ISLAND COTTON.

SIMS' LONG STAPLE COTTON—Our latest and best long staple. Genuinely superior to old types. Very early—as early as King's. First picking August 10. All picked out in October. Space it 18 by 36. An all around limber; full foliage; continuous fruiter, and does not finish up in August as do some early cluster cottons. It is as prolific as any big-boll variety—demonstrated by 3 years' experience. The premium for staple in 1903 and 1902 was 3 cents a pound over mid-ling. Branches upward, foliage not drooping; seed not subject to rot in boll. Long, strong staple. Has created a sensation as a new long staple cotton. One bushel, \$1.25; 5 bushels, \$5.50; 10 bushels, \$10.00.

DOUGHTY'S EXTRA LONG STAPLE—The stalk is long-limbed and branching; yields 400 pounds lint per acre; the staple is one and five-eighths inches long. Our leading cotton factors agree that this is one of our best long staple that comes to Augusta. United States Agricultural Department has distributed it. Eleven bales of cotton were made this year on twelve acres. Bushel, \$1.25; 5 bushels, \$5.50; 10 bushels, \$10.00.

ALLEN'S SILK LONG STAPLE—A long used high grade long staple. The most silky cotton known, perhaps. Same price as Doughty's.

COOK'S SILK LONG STAPLE—We sell a large amount of this long staple also. Same price as Doughty's and Allen's.

SEA ISLAND COTTON—Forty-two pounds bushel. The famous Sea Island Cottons off the South Carolina, Georgia and Florida coasts are known all over the world. While planted seventy-five miles interior, yet seed must come annually from coast or lint is not so long. Roller gin is used, lint slipping the seed. Product of this cotton of ours is usually twenty 350-pound bales on 25 acres. Tall bush; yield about 30 pounds lint for 100 pounds of seed. Lint from our seed fetched in 1903 28 cents per pound. One bushel, \$1.60 (42 pounds); 5 bushels at \$1.50 per bushel. Get special price on big amounts.

FLORODORA COTTON—A hybrid or cross between Sea Island and a prolific variety of upland cotton, in which great productiveness and a characteristic 1 1-4 to 2 inch staple are fixed, no deterioration having occurred, though ten years have elapsed since its introduction. Yields of one to three bales per acre are reported from almost every cotton producing State—North Carolina to Texas—showing its perfect adaptability to all soils producing cotton. It is of rapid, vigorous growth, branching freely and fruiting heavily; a hardy cotton of early maturity; bolls large and five locked. Staple commands a premium of 3 to 6 cents over common cotton. Very easily gathered, though it will not fall out. Our common saw gins answer for delinting. One bushel, \$2.00; 5 bushels at \$1.75; 10 bushels, at \$1.50.

OATS.

(32 POUNDS 1 BUSHEL.)

APPLER OATS—Fall sown. We are largest Georgia contractors. The finest Oat, according to Experimental Station, Georgia, in the South. Rust proof; harder than Texas. Heavy, often 37 pounds to bushel. Matures about ten days earlier than native rust proof and week or ten days later than Burt. Exceedingly prolific; can be harvested about last week in May. Georgia Experimental Station says these are by far Georgia's best Oats. About 10 to 15 per cent better in straw and oats than Nat. R. P. Oats. Get prices car lots if wanted. State amount wanted.

IMPROVED RUST PROOF OATS—These are Augusta's best native rust proof oats. These oats have been selected and improved three or four years. They stand far more cold than the imported Texas oats which are all spring grown, and are far heavier. These oats weigh a good per cent more than Texas Rust Proof. Our friends must remember that it takes as much chaff for a little as a big grain, and in Texas oats they are buying mostly chaff and beard. We are heavy wholesale dealers in these oats. Get price. State quantity.

BURT OATS—These are practically the only spring oats—far better and safer than other oats sown in spring—and when oats are winter killed these oats are invaluable. The Burt Oat is also a good oat sown in fall; two or more weeks earlier than Native Rust Proof. We are large dealers in these oats in car lots. Get prices.

TURF OR GRAZING OATS—(Thirty-two pounds)—Do not resemble oats till they head; look like rye, and look, too, like orchard grass. No cold whatever seems to kill them. They can be grazed, and afterward will grow off and head out like rye. These oats are popular and widely used further north. We've sold them for three or four years, and our growers have been greatly pleased with them. Get prices.

TEXAS SEED OATS—The usual Texas Oats sold by growers are seed oftentimes full of cheat, Johnson grass, rye, Texas Sunflower, and what not. We try to get in these the best seed to be had. We do not advise Texas Oats. You may get Texas weevil. They are spring sown, not cold-resistant, and are often winter killed. Get prices.

POTATOES.

IRISH POTATOES—Ten bushels per acre. We do not sell less than one sack (10 pecks).

We do an immense business to the merchant trade of this territory.

MAINE POTATOES—New York sells to the wholesale grocery trade of the South a large amount of so-called Eastern Potatoes that come from the West and through the lakes. These make big tops but not two potatoes to the hill. These are sold cheap. We handle only the genuine Aroostook, Maine (direct in car lots), potatoes. Parties wanting the cheaper potatoes will kindly get them from the grocers, and we beg that they will not quote them as against our genuine Maine potato—tried and sold by us for ten years. We keep **Early Rose**, and **Red Bliss Triumph**. Ten-peck sack, \$3.25.

SECOND CROP IRISH POTATOES—All Southern Experimental Stations have declared these in every way equal for early spring planting to Maine potatoes. Our grower is the largest and most scientific grower we know. Our merchant trade in these yearly is very heavy. Ten-peck sack, \$3.25, of **Rose** and **Triumph**.

SWEET POTATOES—Georgia grown. Seed trade supplied. No part of America, we believe, grows the sweet potato to the same perfection that Richmond county does.

VINELESS BUNCH YAMS—Vines do not run; grow erect; can be plowed and

cultivated like corn; grows well between corn hills; potatoes easily gathered, bunching like Irish potatoes; sweet, taste like old-time Spanish potatoes. Barrel (3 bushels), \$4.00.

PUMPKIN YAM—Rather late; universally grown about here. Georgia Experiment Station says: "Oblong; weight, 2.41 pounds; color skin, cream pink; flesh, pumpkin red; quality, rich, sugary; productive; improves with keeping. Barrel (3 bushels), \$4.00.

WILLET'S RED SKIN POTATO—(Not the old Negro killer variety)—A juicy, yellow-meat, smooth yam. More prolific than even Pumpkin Yam, and 25 per cent to one-third larger. Very early—make good "eaters" in June. Elliptical; very few small ones. Our most prolific and largest potato. Same price as Pumpkin Yam.

SUGAR YAMS—Not productive (about 100 bushels per acre.) Not large, but the finest, sweetest sweet potato known. Barrel (3 bushels), \$4.00.

FIELD PEAS.

COW PEAS—These seed grown in Georgia. United States seed trade supplied. Sixty pounds to bushel. Their best habitat is about us. The South's best friend. The clover of the South. Contains more nutriment as hay than clover or alfalfa. Grows in poorest soil. Invaluable, whether grown for hay, peas, or soil renovator. Georgia Experiment Station made, per acre, 25,256 pounds of green hay, or 5,000 dry. Declares them to be the soil's best renovator. Recommends them for Illinois, Ohio, Indiana, and all Middle States. Seed must come from South. Plant about May 10—or after grain—one bushel to one-half acre, broadcast; and between hills, one-half to one bushel. Get prices. Northern seedmen must not expect a rough seed like these, sold at close figures and low, to be as clean and free from chaff as are garden peas.

UNKNOWN, or WONDERFUL, or BOSS, or QUADROON—The best combination pea for heavy vines and stock pea. Stands at the head. Erect vines; late maturing; pale buff color peas. Get prices. State amount wanted.

WHIPPOORWILL, or SPECKLED—Georgia Experiment Station acre yield, 1,682 pounds vines and 25 3-10 bushels peas; old variety; tall, upright; yellow

pod; brown speckled pea. The earliest of all peas; not much vine to it; grown principally for the peas, of which it bears heavily. We ship many of these peas North.

BLACK-EYE WHITES; YELLOW-EYE WHITES—Quotations given and trade supplied with **IRON, CLAY, MILLER, TORY, BLACK, LITTLE LADY, CROWDER.**

MIXED COW PEAS—Not one Georgia farmer in one hundred grows straight, unmixed peas of one type. He grows mixed peas because it is better, and for this reason: if the soil or season is not favorable to one type, then it will be favorable to some of the other types. It is almost impossible for this reason to buy straight unmixed peas. We say this to United States seedmen, viz: If you want the best out-turn in peas-hay and peas, then order high grade mixed peas. They are cheaper, too.

RICE.

UPLAND PEARL, or CAROLINA RICE—(Georgia grown seed. Trade supplied)—Forty-four pounds to bushel; drill in April or March; one peck to acre, covering one and a half inches, or drop twelve seed in hill twelve inches apart; rows three feet apart; plant in stiff land; damp is best; profitable crop; largely grown around Augusta. Best prices from us in large amounts. Yield twenty to thirty bushels in upland and thirty to sixty bushels in lowland. Bushel, \$2.10; sack, \$2.00 bushel.

WHEAT.

PURPLE STRAW AMBER WHEAT—(Beardless; sixty pounds)—After exper-

imenting with twenty varieties of wheats we find, for Georgia, this is the best.

We sell tremendous amounts of wheat and our stock can be relied on for this section. Get prices on

FULTZ (beardless); **FULCASTER** (bearded); **RED MAY** (beardless).

TO PREVENT SMUT IN WHEAT.

Before sowing the seed soak it for 12 hours in a solution of copper sulphate (bluestone) at the rate of 1 ounce of the sulphate to 1 1-2 gallons of water. Remove and drain the seed for 10 minutes, and then plunge it into a clear, saturated solution of lime water. Use a burlap sack to hold the grain while being soaked. Treatment as above indicated considered a sure preventative of smut.

FIELD PUMPKINS.

WILLET'S FIELD PUMPKINS—Three pounds to acre. We are large contractors. It is strange that so few farmers plant pumpkins. So easily kept all winter for the table or for cattle, and so easily grown, it seems an absolute pity that pumpkin growing should so fall into disfavor. One pound, 40c; 3 pounds, \$1.00.

PECANS.

PAPER SHELL PECANS—Largest. For seed purposes. Pound, 75c.

RAFFIA.

RAFFIA—Used by truckers for wrapping. One pound, 20c; 10 to 25 pounds, at 15c; 100 pounds at 13c; bale at 12c pound.

GRASSES FOR THE SOUTH.

Grass seeds fluctuate a great deal in price. Write for prices in large amounts. State quantity if you want a number of acres to plant. We are not bound by catalogue prices.

JOHNSON GRASS—(Sorghum Halepense; 28 pounds to bushel)—Known also as Guinea and Mean's Grass. Vetch and Johnson Grass are the standard Augusta Hay Farm mixtures. Plant John-

son Grass as soon as the frost is out of the ground, or August and September and October, 40 pounds to the acre. Cut before the head is in flower. Three to five cuttings per season; withstands any drought; yields heavy crops year after year, without resetting. Hogs devour the roots as if they were sweet potatoes. Is almost ineradicable. Do not let it go to seed; it spreads if you do. Coarse, but fairly tender when cut young; makes

immense crops; very hardy. Augusta is a large grower of this grass. We supply wholesale trade. Get price.

AUGUSTA VETCH—(*Vicia Sativa*)—60 pounds to bushel. This is the standard hay grass used in the widely known hay farms around Augusta. Some allow first crop to get about half ripe. Enough seed fall to the ground for reseeding purposes to come up next February. The second and other crops cut in a greener state. Grows well with Bermuda and Johnson Grass. Vetch is unexcelled for winter pasturage. Sow in August and September with oats, or sow in spring. One pound, 15 cents. Prices subject to change.

HAIRY VETCH—(*Vicia Villosa*)—Sixty pounds to bushel. Sow one to one and a half bushels per acre, alone, in middle August to middle of December, or in March and April. Better if sown with three-fourths bushels oats, rye or wheat, to hold vines up. Rich land. Two cuttings can be had in spring; withstands winter's cold. Fall sowing makes good hay for January and April or May; stock taken off, plants mature and reseeds for next year, or can be cut. Excellent for a hay. Yields two to four tons hay. Grows waist high, branches in all directions and when in flower is a magnificent sight. Five or six pounds per acre in oats yield well. One pound, 15c. Get prices.

LUCERNE CLOVER, or ALFALFA—(*Medicago Sativa*)—Sixty pounds to bushel. Stools or multiples its stems heavily, thirty or forty stalks from one root. These throw out numberless intertwined branches, average growth three feet. Drill or broadcast fifteen pounds per acre. Spring or fall (February or March best.) Cut before blooming four to six times a season. Stand once set lasts a life time. Don't graze it. Rich, sandy soil best. One pound, 25c. Get price.

GEORGIA BUR CLOVER—(*Medicago Denticulata*)—Ten pounds bushel. Georgia grown. We supply United States trade. Plant two or more bushels per acre. Sow July to Oct. 1. Smoothly harrow land and cover only one-quarter inch in depth. Sprouts with fall rains and matures about May 20. If cut or grazed maturity is June 10. When seed ripen plant land in corn or cotton, etc. Furnishes immense grazing for cattle, sheep and hogs in winter. Makes fine hay. Poor clay land planted in Bur

Clover will increase fertility yearly. One planting lasts a life time. Have known sixty-five sheep to be kept solely on four acres thirty days and clover gained on them. Only sold in bur. The clean seed sold from California are not true Bur Clover. One pound, 25c; 1 bushel, \$1.85; 2 bushels at \$1.75; 10 bushels at \$1.50.

BERMUDA GRASS SEED—(*Cynodon Dactylon*)—United States seed trade supplied. We offer reliable and very cheap Bermuda seed. Five pounds mixed well with fine sand should set an acre. Cut three or four times—three or four tons acre. Sun-loving grass. Fine sand and soil binder. Best of all grasses for summer pastures. Once planted lasts forever. Finest hay. Grows well even on sandy soil. Plant in spring or summer when ground continues moist. March is best. One pound, 90c; 5 pounds at 75c.

BERMUDA GRASS ROOTS—About 6 pounds to bushel. Plant 25 to 50 bushels per acre, and at any time in year but winter. Set out sets 1 foot each way in prepared and smooth soil. Cover lightly. Twelve-bushel sack for \$1.75.

JAPAN CLOVER—(*Lespedeza Striata*)—Southern seeds. (United States seed trade supplied)—Twenty-five lbs. to bushel. Sow twenty-five pounds per acre. Grows anywhere and is tenacious in any soil, and lasts always. It is well known now in the South. Scatter a few pounds seed in fall or spring in permanent pastures. Soon covers the ground, and is eaten greedily by stock until frost. In some soils it grows twenty inches high; is mowed; two tons to acre; growth starts in early spring; ready for grazing from June to frost. Rich soil grows thirty inches. Summer forage. Appears in May. Can plant in spring or fall with rye and oats. One pound, 30c; 1 bushel, \$4.50.

HERDS, or RED TOP—(*Agrostis Vulgaris*)—Ten pounds to bushel. A good perennial, generally sown on permanent pastures, generally on moist land. It is best when fed close down as a forage plant. Not killed by overflows. Improves with age each year. Chief value is when made part of grass mixtures for fall pastures. Sow in fall or spring, three bushels to acre. Fancy recleaned. One pound, 15c; 10 pounds, half acre, \$1.00.

RED CLOVER—(*Trifolium Pratense*)—Sixty pounds to bushel. Sow broadcast in spring, September or October.

fifteen pounds to the acre, or sow with any spring grain as early as ground is suitable for plowing. Needs a stiff soil. The most widely cultivated of all pasturage plants for pasturage, hay, and enricher of soil. Price, 1 pound, 20c; 5 pounds for 85c; 15 pounds for one acre, \$2.25.

SCARLET, or CRIMSON CLOVER—(*Trifolium Incanatum*)—Sixty pounds to bushel. An annual. Withstands both our heat and cold. A month earlier than red clover, and can be sown on thinner land, not wet. Can be cut for green food in April or May, or for hay, or for plowing under. Stems in bloom vary from two to five feet in height, and stools heavily, one seed making oftentimes one hundred blooms. It grows during winter and spring months. Sow August, September or October, fifteen pounds to acre. Broadcast. Can be pastured in December and January, and still yield. Is sown about here usually with oats. One pound, 10c; 15 pounds, \$1.50, for 1 acre.

WHITE CLOVER—(*Trifolium Repens*)—Not a heavy hay producer, but invaluable in permanent pastures. Sow twelve pounds to acre in fall or spring. Fall is better. Price, 30c a pound; 5 pounds for 28c pound.

KENTUCKY BLUE GRASS—(*Poa pratensis*)—Fourteen pounds to bushel. Pasture grass well known. Sow in fall; usually sown with other grasses—Orchard grass, clover, etc.; also used in lawns and woodlawns. Sow two bushels per acre. A perennial for dark soiled lowlands or lime lands. Good grazing in fall and winter. Gets better each year. One pound, 20c; 1 bushel, for one-half acre, \$2.00. Fancy quality.

GEORGIA "TEXAS BLUE GRASS"—(*Poa Arachnifera*)—Perennial. Transplant sets or roots from November to April, by running off rows twenty-four

inches apart, and drop sets twelve inches in rows. Can be pushed into soil with an inch-wide stick. Live easily. Cultivate first year with wide sweep; after this it takes care of itself. Makes fine pastures for November and May. Do not too closely graze crop in summer. Grows two to three feet high, and thick; makes good cutting in spring. Makes good lawn and for terraces nothing superior. We get \$1.00 for 1,000 sets; \$3.50 for 10,000; 5 to 10,000 sets an acre.

LAWN AND PARK EVERGREEN GRASS—We have the best mixture we know of. So compounded with seven or eight grasses that it ensures green grass all the year. Our mixture has succeeded here when others failed. Fourteen pounds to bushel. One pound of seed, 35c; plants plat 20x30 feet; 10 pounds for \$2.50; 60 pounds 1 acre.

ORCHARD GRASS—(*Dactylis Glomerata*)—Fourteen pounds to bushel. Sow two bushels to acre, fall or spring. An excellent perennial. Commence spring growth in February; ready for hay cutting in April. Graze then till hot summer. Early autumn starts new set of leaves, making rich pasturage, remaining green all fall and winter. Mixes well with Red Top. A good woodlawn pasture. No better winter growth on wet or heavy clay lands. One pound, 20c; bushel, for half acre, \$2.25.

GEORGIA MELLILLOTUS ALBA, or BOKHARA CLOVER—(33 pounds)—Sow one bushel one acre. Slightly harrow. Lime or black soil. Good renovator of soil. Once planted, always planted. Finest hay crop—several cuttings. Plant in March. Begin cutting June—waist high, and before seeding. Does not seed first year, but reproduces from roots; second year cut for hay and then allow to go to seed. Will reseed as long as land is unbroken. One pound, 15c; 1 bushel, \$3.00.

N. L. WILLET DRUG CO.

AUGUSTA, GA.

OFFER INSECTICIDES, ANIMAL REMEDIES, FARM NECESSITIES, ETC.

The Agricultural Department, Washington, D. C., will mail you on application pamphlet on the use of Insecticides. We offer materials as follows:

- Bordeaux Mixture.**—Dry Materials, 8 lbs. (for 50 gallons of water) for 75c.
- Paris Green.**—1 lb. 25c, 10 lbs. at 20c a lb. and 100 lbs. at 17c. Usually add equal parts lime. Formula, 4 oz. Paris Green, 4 oz. Lime and 50 gallons water; or teaspoonful each to one bucket of water; or 1 oz. Paris Green to 6 to 15 gallons water. Dry method for garden: Mix 1 oz. Paris Green to 6 lbs. Flour, or 10 lbs. Lime, and dust so as to show evenly on surface.
- Carbon, Bi-Sulphide.**—(Liquid) 1 lb. 35c. Saves 1 ton seed.
- Train or Fish Oil.**—Drives away flies, gnats, etc. Smear on animal at point of attack. Some mix 1-2 kerosene. Per gallon, 50c. 1 gallon can 10c extra.
- Resin Wash.**—Dry. Batch weighs 14 lbs. for 50 gallons of water, 75c.
- Flour Sulphur.**—Dry. 1 lb. for 10c, 5 lbs. for 35c, 100 lbs for \$4.00.
- Whale Oil Soap.**—1 lb. 15c, 25 lbs. at 10c lb., 50 lbs at 9c. Lice and delicate larva 1 lb. to 6 gallons of water; San Jose Scale 1 lb. to 1 gallon of water.
- Chloride Lime.**—1 lb. tin 15c., 10 lbs., at 12c a lb.
- Sun Sanitary Fluid.**—Ideal Germicide, Disinfectant, Deodorizer, Antiseptic, Purifier. Non-Poisonous. Agreeable, Refreshing Odor. Dilute 1 part to 50 or 100 of water as per directions. 1 Pint bottles 20c, 1 Quart bottles 35c, 1 Gallon can \$1.00, Barrels 75c Gallon.
- Formalin.**—Prevents Smut in Wheat and Oats. Soak Oats, etc., 2 hours and dry and plant, or plant wet, in water containing 1 pint of Formalin to 50 gallons of water. 1 pint Formalin 75c.
- Georgia Chicken Cholera Cure.**—Cures Cholera. Postpaid 30c, 1 dozen \$2.00 delivered.
- National Hog Cholera Cure.**—Formula United States Government. Postpaid 30c., 1 dozen \$2.00 delivered.
- Holleyman's Compound Elixir.**—For Horse Colic. Never Fails. 1 bottle 50c., 1 dozen \$4.50 delivered.
- Howard Horse and Cattle Powder.**—Full 16 oz. Package. 1 package 25c. Postpaid 35c., 1 dozen express prepaid \$2.00.
- Blue Stone.**—1 lb. 15c; 5 lbs. for 60c; for wheat 1 oz. to 1 1-2 gallons of water. Soak 12 hours. Prevents Smut.
- Chatham Fan Mill.**—Separator and Cleaner, \$44.00, 3 years time.
- Christen Seed Sower.**—\$1.00.
- Stempel Fire Extinguisher.**—\$15.00.
- Auto Spray Pump.**—\$5.00.
- Animal Parasite Killer.**—Mix 30 to 50 parts of water to one part Animal Parasite Killer. Pint 30c; quart 50c; gallon \$1.25; barrel \$1.00 a gallon. Kills fleas on dogs, cats, etc., kills lice on human or lower animals. kills mites and ants, ticks, screw worms, and the parasites of scab, itch and mange.
- Rex Brand Cotton Marking and Branding Ink.**—Indelible, Black, Green, Blue, Violet, Crimson. Package for 50 gallons of Ink \$2.50, package for 26 gallons \$1.50, 10 gallons 75c. All colors same price.


A Personal Matter.

The greatest mistake made by people in general, the mistake which causes much misery and suffering everywhere, is the failure to think of the future. Every day one may hear somebody express a desire to live the past over again, so as to avoid its mistakes, but the right way is to profit by the experience of others. You may enjoy the best of health today, not knowing what an ache or a pain may be, and never think of sickness, which might come on in a few hours. Some day you may have a slight headache; or a weary, tired or bilious feeling; or perhaps a little attack of indigestion or dyspepsia—these are the symptoms of more serious trouble—the signals that danger is ahead. Avoid the mistakes of others and be prepared for emergencies. Keep Simmons Liver Regulator constantly on hand, and when you feel the least bit out of sorts, take a few doses and see how much good it will do you. Simmons Liver Regulator is the best household remedy known, and no home is complete without it. It acts directly on the liver, aids digestion, strengthens the nerves, cleanses the blood and builds up the entire system so that every atom of vitality counts.

We cannot too highly recommend Simmons Liver Regulator to our thousands of readers. "I send you a package of counterfeit Simmons Liver Regulator, called a trial package and they said it would cost me nothing—it nearly cost me my life."—John Griffin, Cassville, Ark.

"I have used Simmons Liver Regulator and always found it to do what is claimed for it. The last bottle and two packages did me no good and were worse than nothing. I see that they are not put up by J. H. Zeilin & Co., and are not genuine. Send me some from honest hands (with Red Z and Zeilin & Co.'s signature on the wrapper.) The fictitious stuff sold will injure some one badly."—Benj. T. Rich, Fernandina, Fla.

Simmons Liver Regulator

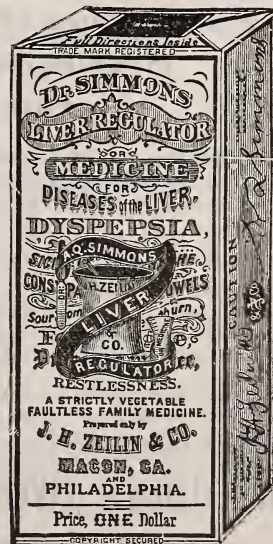
Every package is like
this fac-simile 



On the front of each package
is the red Z, on the side
the seal and signature
of J. H. Zeilin & Co.,
in Red.



Do not accept any Substi-
tutes or Imitations.



ARE YOUR KIDNEYS SOUND?

LISTEN TO THE TESTIMONY OF ONE WITH EXPERIENCE.

I suffered for several years with a stomach trouble. For a long time I could not ascertain what the true nature of my malady was. One doctor would pronounce it "catarrh of the bladder," another "Bright's Disease," and still another "indigestion." I was persuaded to buy a bottle Stuart's Gin and Buchu. The effect was seen in a few days. My appetite returned; I began to take on flesh, and after the third bottle the pains disappeared and I have not felt them since. It beats the doctors.—Jno. E. Sims, Knoxville, Tenn.

WRITE FOR LITERATURE **STUART GIN AND BUCHU COMPANY,** ATLANTA, GEORGIA.

Dr. Gilder's Liver Pills.

Are so constructed that they do **FOUR** things.

- They Act on the Liver,**
- They Act on the Upper Bowels.**
- They Act on the Lower Bowels.**
- They Act Upon the Kidneys.**

NOTE—Other pills do only a part of above. Gilder's do not gripe.

No Southern made pill is so popular as Gilder's.

It was born in the South thirty years ago.

It was raised in the South.

It has always been made in the South.

It has cured more Southern Liver troubles than other pill.

Southerners should use them.

Let Northern pills cure Northern people.

For the Cure of Liver Complaint, Biliousness, Heartburn, Dyspepsia, Indigestion, Pain in Back, Side, Etc.

DIRECTIONS FOR USING—If your Liver is not acting properly, and you feel dull and drowsy and headachy, three pills at night will clear the system of vitiated bile, and make you feel like a new person.

If you have a pain in the side or back, it probably will arise from a torpid Liver. Stir it to action by taking a dose of these Liver Pills.

If your bowels are constipated, two pills at bed time will set you all right. If your food does not digest, take two or three pills twice a week at bed time, until three or four doses have been taken, and you will feel yourself entirely relieved of these disagreeable symptoms.

If your complexion is sallow and your eyes discolored, a full dose of these pills will impart a roseate hue to your cheeks, and give your eyes the brilliancy of perfect health.

Dr. GILDER'S LIVER PILLS, 25c. PER BOX, POSTPAID.

AUGUSTA DRUG CO., Augusta, Ga., Make Gilder's.

COUGHS—COLDS—CROUP

Yield Quickly before the Curative Properties of



CHENEY'S EXPECTORANT.

No preparation of a similar nature acts so pleasantly or naturally, or with such universal results. It allays inflammation and conquers whooping cough in the prattling infant with the same dispatch as it eradicates a deep-seated cold in the grandparent.

THE KING OF COUGH SYRUPS.

FOR SALE BY ALL DRUGGISTS.

HUMAN ACHE SPECIFIC

- PRICKLY HEAT—Boracine (postpaid, 30c.)25c.
- CONSTIPATION—Gilder's Liver Pills25c.
- TORPID LIVER—"H. H. P." Liquid50c.
- LUNG TROUBLES—Willet's Wine Cod Liver Oil ..\$1.00
- GENERAL DEBILITY—Land's Syr. Hyp. Comp. ..\$1.00
- CHILLS—Anti-Shake50c.
- HEAD—Peerless Headache Tablets, dozen postpaid ..12c.
- DIARRHOEA—Our Diarrhoea Cordial25c.
- ITCH—Infallible Itch Ointment25c.
- TETTER—Infallible Tetter Ointment25c.
- ITCHING PILES—Certain Itching Piles Remedy . . .25c.
- WORMS—Fisher's Worm Candy, postpaid.. . . .13c.
- BAD BLOOD—Ereuthaima \$1.00
- ASTHMA—North's Asthma Cure25c.
- RHEUMATISM—Paxton Rheumatic Remedy . . . \$1.00
- COUGH—Wild Cherry Cough Cure25c.
- CHAPPED LIPS—Rose Cream25c.

N. L. WILLET DRUG CO.

AUGUSTA DRUG CO.

Retail Orders.

Wholesale Orders.

WEATHER FORECAST FOR 1904

WEATHER FORECASTS FOR JANUARY.—1st to 2d, stormy, disagreeable; 3d to 4th, falling temperature; 5th to 6th, rain and sleet; 7th to 8th, mild, soft; 9th to 10th, stormy, floods; 11th to 12th, changeable, variable; 13th to 14th, soft, damp weather; 15th to 16th, wet, slushy; 17th to 18th, cloudy, foggy and threatening conditions; 19th to 20th, rain, sleet and snow; 21st to 22d, variable, changeable; 23d to 24th, dangerous gales on the coast; 25th to 26th, unsettled period; 27th to 28th, freezing weather at extreme southern points; 29th to 31st, low temperature at all points.

WEATHER FORECASTS FOR FEBRUARY.—1st to 2d, bright and clear; 3d to 4th, changeable, threatening; 5th to 6th, cloudy, rainy; 7th to 9th, mild, genial weather; 10th to 11th, soft, balmy; 12th to 13th, cloudy; 14th to 15th, rainy, foggy; 16th to 18th, cloudy, disagreeable conditions over the South; 19th to 20th, local electrical disturbances; 21st to 22d, heavy precipitation; 23d to 25th, excessive rainfall; 26th to 27th, colder; 28th to 29th, freezing weather at extreme southern points.

WEATHER FORECASTS FOR MARCH.—1st to 2d, changeable, threatening; 3d to 4th, heavy rainfall; 5th to 6th, unusually high winds; 7th to 8th falling temperature; 9th to 10th, warmer and threatening; 11th to 12th, local thunder storms; 13th to 14th, colder; 15th to 16th, threatening, rain; 17th to 18th, floods; 19th to 20th, warm wave; 21st to 22d, very mild; 23d to 24th, rough, squally; 25th to 26th, heavy dashes of rain throughout the South; 27th to 28th, blustery; 29th to 31st, showery and disagreeable.

WEATHER FORECASTS FOR APRIL.—1st to 3d, brilliant, spring-like weather; 4th to 5th, changing; 6th to 7th, marked electrical activity; 8th to 9th, excessive rainfall; 10th to 12th, pleasant, genial sunshine at all points; 13th to 14th, threatening; 15th to 16th, destructive thunder storms; 17th to 18th, cold; 19th to 20th, low temperature for April at all points; 21st to 22d, warmer; 23d to 24th, showery with stormy conditions; 25th to 26th, fine, genial weather; 27th to 28th, pleasant, mild; 29th to 30th, unsettled, damp, foggy.

WEATHER FORECASTS FOR MAY.—1st to 3d, cool, backward weather; 4th to 5th, universal wet period, floods; 6th to 7th, continued rains; 8th to 9th, electrical disturbances; 10th to 12th, stormy; 13th to 15th, cool period; 16th to 17th, warming up; 18th to 19th, hot and sultry; 20th to 21st, seasonable; 22d to 23d, destructive storms; 24th to 25th, heavy precipitation; 26th to 27th, damp, foggy; 28th to 29th, windy; 30th to 31st, normal temperature.

WEATHER FORECASTS FOR JUNE.—1st to 2d, foggy and wet; 3d to 4th, damp, backward weather for June; 5th to 6th, stormy; 7th to 8th, severe thunder and lightning; 9th to 10th, cool and pleasant; 11th to 12th, threatening conditions; 13th to 14th, tornado period; 15th to 16th, severe local disturbances; 17th to 18th, unsettled conditions; 19th to 20th, damp, foggy; 21st to 22d, warm; 23d to 24th, sultry; 25th to 26th, hot and dry; 27th to 28th, seasonable; 29th to 30th, fine, growing weather.

WEATHER FORECASTS FOR JULY.—1st to 2d, very warm; 3d to 4th, sultry; 5th to 6th, excessive rainfall over the South; 7th to 8th, thunder storms; 9th to 10th, cool; 11th to 12th, damp and foggy; 13th to 14th, threatening; 15th to 17th, great electrical activity, 18th to 19th, wet and gloomy; 20th to 21st, heavy fogs; 22d to 23d, seasonable; 24th to 25th, fine, growing weather; 26th to 27th, generally seasonable; 28th to 30th, clear, warm weather; 31st, sultry.

WEATHER FORECASTS FOR AUGUST.—1st to 3d, general hot spell south of 40th parallel; 4th to 5th, thunder showers; 6th to 7th, unsettled weather on Gulf and Atlantic coast plain; 8th to 9th, warm period; 10th to 13th, great heat; 14th to 15th, showery; 16th to 17th, general rains; 18th to 19th, cool; 20th to 21st, cool nights and bright nights; 22d to 23d, dry weather; 24th to 25th, drought very pronounced; 26th to 27th, dull, cloudy conditions; 28th to 29th, local rains; 30th to 31st, sultry period, clear and dry.

WEATHER FORECASTS FOR SEPTEMBER.—1st to 4th, generally backward, cloudy conditions at all points South and East; 5th to 6th, clear and dry; 7th to 8th, drought, becoming serious; 9th to 10th, storm period; 11th to 12th, severe local storms; 13th to 14th, warm wave; 15th to 16th, high temperature; 17th to 18th, cooler; 19th to 20th, cool nights at all points; 21st to 22d, changeable, variable; 23d to 24th, cloudy; 25th to 26th, heavy rains; 27th to 28th, cloudy, foggy period; 29th to 30th, dull, smoky weather.

WEATHER FORECASTS FOR OCTOBER.—1st to 3d, abnormal heat at all points; 4th to 5th, dry and warm; 6th to 7th, cool nights and warm days; 8th to 9th, changing; 10th to 11th, local clouds; 12th to 13th, general rains; 14th to 15th, clear and pleasant; 16th to 17th, fine, genial autumn weather; 18th to 20th, clouds; 21st to 22d, general rains; 23d to 24th, warm period; 25th to 26th, variable to unsettled weather in South and East; 27th to 28th, warm and pleasant; 29th to 31st, cool wave.

WEATHER FORECASTS FOR NOVEMBER.—1st to 2d, unsettled period; 3d to 4th, damp, cloudy, foggy conditions; 5th to 6th, cloudy, rainy; 7th to 9th, unusual rainfall; 10th to 11th, cool; 12th to 14th, cold, squally weather; 15th to 16th, clear and frosty; 17th to 18th, mild period; 19th to 20th, variable, threatening; 21st to 22d, cloudy, unsettled conditions South; 23d to 24th, rain; 25th to 26th, damp and foggy; 27th to 28th, variable; 29th to 30th, cold wave, freezing.

WEATHER FORECASTS FOR DECEMBER.—1st to 2d, blustery; 3d to 4th, squally weather prevailing generally; 5th to 6th, heavy rainfall; 7th to 8th, snow and slush; 9th to 10th, mild wave; 11th to 13th, pleasant, genial weather over the South; 14th to 15th, changeable; 16th to 17th, rough and squally; 18th to 19th, colder; 20th to 22d, low temperature; 23d to 24th, storm wave; 25th to 26th, rough, wintry weather at all points South and East; 27th to 28th, very cold; 29th to 31st, uniform cold weather in all sections, freezing as far south as the Gulf coast.

SLOAN'S LINIMENT

CURES RHEUMATISM

FAMILY SIZE 25c.

HORSE SIZE 50c AND \$1.00.

KILLS SPAVIN, CURB
OR SPLINT,

CURES SPRAINS
AND REDUCES ALL SWELLINGS.



SLOAN'S SURE COLIC CURE

Two Bottles and glass Syringe in Each Package—Price \$1 00.

DR. PARKER'S SURE KIDNEY PILLS FOR MAN—Price 25c.

PREPARED
ONLY BY

Dr. EARL S. SLOAN,

BOSTON, MASS., U. S. A.

FORMERLY OF ST. LOUIS, MO.

BORACINE

EXQUISITELY
PERFUMED

THE BABY'S POWDER FOR PRICKLY HEAT.

WARNING—Never use TALCUM POWDER of any kind. It is simply a ground stone; injures by filling up the skin's pores. It is never absorbed by the system—not medical.

The Baby! Every baby that comes into the world must be washed and powdered several times a day. Boracine was made for babies. It cures redness and irritation. It cures the baby's Prickly Heat. It keeps down bumps and pimples, makes baby's skin white and smooth like velvet. It makes baby as sweet as carnation or white roses.

YOUR BABY NEEDS BORACINE.

Not a Perfect Baby or Happy Home Without It.

**PRICKLY
HEAT**

Big grown-ups, youths, little tots—all have prickly heat. Search the world and you would not find so perfect a remedy as is Boracine. Exquisitely soothing and helpful. Use it freely. Harmless.

AUGUSTA DRUG CO., Manufacturers,

Package 25c.; postpaid 30c. AUGUSTA, GA.

FOSTER'S WHITE CAMPHOR LINIMENT

For Rheumatism, Neuralgia, Sprains, Swellings, Burns, Soreness, Stiff Joints, Bruises, Mumps, Piles, Pimples, Pains in Side, Chest or Back.

FOR ANIMALS IT HAS NO EQUAL.

Curing all curable Lameness, Inflammation, Wounds, Galls, Sore Neck or Shoulder, Sprains, Stiff Joints, Sweeny, etc., and is an unfailing remedy for Scratches.

Sold by all first-class dealers in medicine at 25 cents per full 12 oz. Bottle. Made by

**KEYSTONE DRUG COMPANY,
SOUTH BOSTON, VA.**

DR. LUKE'S SARSAPARILLA AND ALTERATIVE EXTRACT

In Tablet Form—41 Days Treatment to the Box.

The Great Fountain of Life. A Purely Temperance Medicine
Free from all Alcoholic Stimulants.

EQUAL IN MEDICINAL STRENGTH TO TWO AND ONE-FOURTH QUARTS OF
THE ORDINARY ALCOHOLIC SARSAPARILLA.

..Dr. LUKE'S SARSAPARILLA and ALTERATIVE EXTRACT cures every form of blood taint, such as Scrofula, Erysipelas, Kidney and Liver Diseases, Catarrh, Rheumatism, Malaria, Female Diseases, Nervousness, etc., and as a Spring Medicine there is nothing that so invigorates the nervous system, or so imparts new life and energy to the functions of the body.

Ask for Dr. LUKE'S SARSAPARILLA and ALTERATIVE EXTRACT, and be sure that you get it. If your dealer does not have it, we will send it to you by mail on receipt of price. \$1.00 per box, 6 boxes for \$5.00.

**Address, THE KEYSTONE DRUG CO.
SOUTH BOSTON, VA.**

People who suffer from Sick or Nervous Headache, will be pleased to learn of a never failing cure, known as

"TA-KA" HEADACHE TABLETS.

They are Guaranteed Perfectly Harmless, and a positive cure. Put up in handsome hinge boxes in 10 and 25c. size. Ask your dealer for them. If he cannot supply you, remit price to us and we will send by mail, post-paid.

**Keystone Drug Company,
SOUTH BOSTON, VA.**

BORACINE 25 CENTS

Postpaid.

The Baby's Powder and for Prickly Heat.

Wild Cherry Cough Cure
 25c We've had a life-time experience with it and know just what it will do

ANATOMY OF MAN'S BODY,
 AS SAID TO BE GOVERNED BY THE TWELVE SIGNS.

Aries—Head and Face.

Gemini,
Arms.

Leo,
Heart.

Libra.
Reins.

agittarius.
Thighs.

Aquarius,
Legs.

Taurus,
Neck.

Cancer.
Breast.

Virgo,
Bowels.

Scorpio,
Secrets.

Capricorn
Knees.

Pisces—Feet.

TO KNOW WHERE THE SIGN IS:—Find the day of the month, and against it, in the column that shows the Moon's place, you will find the Sign that shows the part of the body supposed to be governed.

CHRONOLOGICAL CYCLES FOR 1904.

Domincinal Letters.	C. B.	Solar Cycle,	9
Lunar Cycle, or Golden No	5	Roman Indiction,	2
Epact,	13	Julian Period,	6617

CHURCH DAYS FOR 1904.

Epiphany,	Jan. 6	Easter Sunday,	Apr. 3
Septuagesima Sunday,	Jan. 31	Low Sunday,	Apr. 10
Saxagesima Sunday,	Feb. 7	Rogation Sunday,	May 8
Quinquagesima Sunday,	Feb. 14	Ascension Day,	May 12
Shrove Tuesday,	Feb. 16	Whit Sunday,	May 22
Ash Wednesday,	Feb. 17	Trinity Sunday,	May 29
Quadragesima Sunday,	Feb. 21	Corpus Christi,	June 2
Palm Sunday,	Mch. 27	Advent Sunday,	Nov. 27
Good Friday,	April 1	Christmas Day,	Dec. 25

ROSE CREAM
 Cures once Chapped Hands and Face and Lips. Makes Rough Skin Smooth. 25c Bottle

Y. K. W. IT CURES Gonorrhœa, Gleet, Stricture, in 2 to 5 Days 50c

THESE PREPARATIONS ARE ALL WRIGHT.

ON THE MARKET FOR OVER 50 YEARS, AND "SO TRIED AND TRUE."

CROSSMAN'S SPECIFIC MIXTURE

FOR BLOOD DISORDERS

THE EYE IS PRICELESS—CONSERVE AND GUARD IT.

ROMAN EYE BALSAM

WAS MADE FOR THE EYE.

Ophthalmia, Inflammation, Styes, Glutinous Matter, Weak Eyes.

ROMAN EYE BALSAM CURES ALL THESE
THE EYE IS WORTH SAVING

PILLS FOR ILLS

The body must have its sewer—Liver, Kidney, Bladder—all. The force to flush and clean them out is

WRIGHT'S INDIAN VEGETABLE PILL

No other pill affects so many organs of the body as Wright's. WRIGHT'S INDIAN VEGETABLE PILLS are as clearing within as a Turkish bath outside.

Dr. McMUNN'S ELIXIR of OPIUM

The Pure and Essential Extract from the Native Drug. Possesses high superiority over LAUDANUM, PAREGORIC and BLACK DROP.

DR. McMUNN'S ELIXIR OF OPIUM is also greatly superior to MOPHINE. Has been in use since 1837.

Peery's Vermifuge, or "Dead Shot"

Clears the Child's system of Worms in a few hours. No disease so common and so fatal among children as WORMS!

"Dead Shot's" speedy operation in all sudden attacks brought on by worms, such as Convulsions, Co. ic, Fits, Spasms, gives it unrivalled superiority over other Vermifuges.

Wright's Indian Vegetable Pill Co.

372 Pearl St., New York.

FOR SALE BY

N. L. WILLET DRUG CO.,
Augusta, Ga., Retail.

AUGUSTA DRUG CO.,
Augusta, Ga., Wholesale.

As a
**Blood Pur-
ifier and Tonic**

there is nothing in existence to
compare with

**DR. THACHER'S
LIVER and BLOOD SYRUP**

"THE ROAD TO GOOD HEALTH."

It is old, reliable and sure. The most effective combination known for purifying the blood and toning up the entire system.

Thousands take it regularly every year to keep from getting sick. Dr. Thacher's Liver and Blood Syrup never fails to relieve and cure.

All druggists sell it at 50 cents and \$1.00 per bottle. Dr. Thacher's Liver Medicine (Dry) 25 cents. Send us two-cent stamp for sample bottle and write our Consultation Department explaining symptoms and receive free advice.

**THACHER MEDICINE
COMPANY,**

CHATTANOOGA,
TENN.

Price, 50 Cent

PREPARED BY
THACHER MEDICINE CO.
Chattanooga Tenn.

CASTORIA

for Infants and Children.

Castoria is a harmless substitute for Castor Oil, Purgative, Drops and Soothing Syrups. It is Pleasant. It contains neither Opium, Morphine nor other Narcotic substance. It destroys Worms and allays Feverishness. It cures Diarrhoea and Wind Colic. It relieves Teething Troubles and cures Constipation. It regulates the Stomach and Bowels, giving healthy and natural sleep. The Children's Panacea—The Mother's Friend.

The Kind You Have Always Bought
Bears the Signature of

Chas. H. Fletcher.

In Use For Over 30 Years.

THE CENTAUR COMPANY, 77 MURRAY STREET, NEW YORK CITY.

Dr. Gilder's Liver Pills, 25 CENTS POST PAID

Cure, by actual count, 36 out of 37 Headaches
25c postpaid, per box of 1 dozen Capsules.

Land's Headache Capsules

ALMANAC CALCULATIONS FOR 1904.

The year 1904 comprises the latter part of the 128th and the beginning of the 129th year of American Independence, and corresponds to the year 6617 of the Julian Period; the year 5664-5665 of the Jewish Era (the year 5665 begins at sunset on September 9th); the year 2657 since the foundation of Rome, according to Varro; the year 2564 of the Japanese Era, and to the 37th year of the period entitled "Meiji"; the year 1322 of the Mohammedan Era, or the Era of the Hegira, begins on the 18th day of March, 1904. The 1st day of January, 1904, is the 2,416,481st since the commencement of the Julian Period.

EQUINOXES AND SOLSTICES.

Vernal Equinox (Spring begins), March 20th.
Summer Solstice (Summer begins), June 21st.
Autumnal Equinox (Autumn begins), September 23d.
Winter Solstice (Winter begins), December 22d.

MORNING AND EVENING STARS FOR 1904.

The Planet Venus (ζ) begins as Morning Star and continues as such until July 8th, after which date she will be Evening Star to end of the year.

The Planet Mars (δ) will be Evening Star until May 30th, and then Morning Star the rest of the year.

The Planet Jupiter (μ) is Evening Star until March 27th, then Morning Star until October 18th, and then Evening Star the balance of the year.

The Planet Saturn (ν) will be Evening Star till February 1st, then Morning Star until August 10th, and then Evening Star the balance of the year.

ECLIPSES FOR 1904.

In the year 1904 there will be two eclipses, both of the Sun.

I. An Annular Eclipse of the Sun, March 16th, not visible here; visible to Southern Asia, Eastern Africa, and a number of Islands in the East Indies.

II. A Total Eclipse of the Sun, September 9th, not visible here; visible to an immense portion of the Pacific Ocean on both sides of the Equator.

EMBER DAYS FOR 1904.

February—24th, 26th and 27th.
September—21st, 23rd and 24th.
May—25th, 27th and 28th.
December—14th, 16th and 17th.

BORACINE The Baby's Powder and In Sprinkle Top Tins Post-
for Prickley Heat paid 25c (Carnation Odor)

H. H. P. Hill's Hepatic Panacea, Liquid
50c| Bottle. For the Liver. . .

H. H. P.

A Liver Medicine known for
Forty Years as

HILL'S Hepatic Panacea

The best known and most comprehensive Liver Medicine made in the South. The old style "H. H. P." liquid per bottle 50c.

Liquid, in 8 oz. bottles. Acts on bowels gently and without gripes, pains or sickness, in several hours.

N. L. Willet Drug Co.

Retail Orders.

Augusta Drug Co.

Wholesale Orders

"Y. K. W."

IT CURES

**Gonorrhoea, Gleet,
Stricture.**

IN TWO TO FIVE DAYS

50 CENTS

Nothing else cures so quickly and easily as Y. K. W. Syringe free with each bottle.

N. L. Willet Drug Co.

Augusta, Georgia.

Howard's Horse and Cattle Powders

It keeps your Horses slick and fat.
A Tonic and an Appetizer
When Stock are run down in flesh.
Purifies Stagnant Blood in Springtime.
Full 16 oz. Packages. Other makes only
12 oz to package.

Price, 25c.; postpaid, 35c.

Manufactured by

Augusta Drug Co.

Augusta, Ga., or

N. L. Willet Drug Co.

AUGUSTA, GA.

Georgia Chicken Cholera Cure

Cures Chicken Cholera, 25 cents; postpaid, 30 cents.

National Hog Cholera Cure

The formula of the U. S. Government,
25 cents; postpaid, 30 cents.

All manufactured by

Augusta Drug Co.

Augusta, Ga., or

N. L. Willet Drug Co.

Augusta, Ga.

1st Month, JANUARY. 1904.

PHASES OF THE MOON.

Eastern Stand. Time, D. H. M.

Full Moon.....	3 0 47 mo.
Last Quarter.....	9 4 10 eve.
New Moon.....	17 10 47 mo.
First Quarter.....	25 3 41 eve.

Sun Slow

EQUATION OF TIME.

5	6	7	8	9	10	11	12	13	14	15	16
D.	M.	1	2	3	4	5	6	7	8	9	10
1	2	3	4	5	6	7	8	9	10	11	12
13	14	15	16	17	18	19	20	21	22	23	24

VARIOUS PHENOMENA.

Day	Week	Sun Rises	Sun Sets	Moon			Moon South.	H. M.
				Rises	Sets	Place		
1	Fr	7	6	4 54	5 5	☾	10 59	
2	Sa	6	4 54	5	5	☾	morn	
3	Su	7	5 4 54	5 58		☾	0 1	
4	M.	7	5 4 55	7 14		☾	1 1	
5	Tu	7	5 4 55	8 14		☾	2 1	
6	W	7	4 4 56	9 23		☾	2 58	
7	Th	7	4 4 56	10 29		☾	3 53	
8	Fr	7	4 4 56	11 30		☾	4 45	
9	Sa	7	3 4 57	morn		☾	5 36	
10	Su	7	3 4 57	0 33		☾	6 26	
11	M.	7	3 4 58	1 35		☾	7 15	
12	Tu	7	2 4 58	2 34		☾	8 4	
13	W	7	2 4 59	3 31		☾	8 54	
14	Th	7	1 4 59	4 26		☾	9 44	
15	Fr	7	0 5 0	5 17		☾	10 33	
16	Sa	6	59 5 1	6 3		☾	11 21	
17	Su	6	59 5 2	sets.		☾	eve.	
18	M.	6	58 5 2	6 26		☾	0 55	
19	Tu	6	57 5 3	7 20		☾	1 40	
20	W	6	56 5 4	8 14		☾	2 23	
21	Th	6	55 5 5	9 8		☾	3 6	
22	Fr	6	54 5 6	10 1		☾	3 49	
23	Sa	6	53 5 6	10 54		☾	4 32	
24	Su	6	53 5 7	11 50		☾	5 16	
25	M.	6	52 5 8	morn		☾	6 2	
26	Tu	6	52 5 8	0 47		☾	6 51	
27	W	6	51 5 9	1 45		☾	7 44	
28	Th	6	50 5 10	2 46		☾	8 40	
29	Fr	6	49 5 11	3 46		☾	9 39	
30	Sa	6	48 5 11	4 47		☾	10 39	
31	Su	6	48 5 12	5 42		☾	11 41	

TAKE GILDER'S LIVER PILLS. 25 CENTS, POSTPAID.

2d Month FEBRUARY. 1904.

PHASES OF THE MOON.

Eastern Stand. Time, D. H. M.

Full Moon.....	1 11 33 mo.
Last Quarter.....	8 4 56 mo.
New Moon.....	16 6 5 mo.
First Quarter.....	24 6 9 mo.

Sun Slow

EQUATION OF TIME.

25	26	27	28	29	30	31	1	2	3	4	5	6	7	8	9	10	11	12	13	14	15	16	17	18	19	20	21	22	23	24	
D.	M.	1	2	3	4	5	6	7	8	9	10	11	12	13	14	15	16	17	18	19	20	21	22	23	24	25	26	27	28	29	30
1	2	3	4	5	6	7	8	9	10	11	12	13	14	15	16	17	18	19	20	21	22	23	24	25	26	27	28	29	30	31	
13	14	15	16	17	18	19	20	21	22	23	24	25	26	27	28	29	30	31	1	2	3	4	5	6	7	8	9	10	11	12	

VARIOUS PHENOMENA.

Day	Week	Sun Rises	Sun Sets	Moon			Moon South.	H. M.
				Rises	Sets	Place		
1	M	6	47 5 13	5 13		☾	morn	
2	Tu	6	46 5 14	7 10		☾	0 41	
3	W	6	45 5 15	8 11		☾	1 38	
4	Th	6	44 5 16	9 10		☾	2 34	
5	Fr	6	43 5 17	10 21		☾	3 28	
6	Sa	6	42 5 18	11 25		☾	4 20	
7	Su	6	41 5 19	morn		☾	5 11	
8	M	6	40 5 19	0 27		☾	6 1	
9	Tu	6	39 5 20	1 25		☾	6 51	
10	W	6	39 5 21	2 21		☾	7 41	
11	Th	6	38 5 22	3 13		☾	8 30	
12	Fr	6	37 5 23	4 2		☾	9 19	
13	Sa	6	36 5 24	4 46		☾	10 6	
14	Su	6	35 5 25	5 27		☾	10 52	
15	M	6	34 5 26	6 4		☾	11 37	
16	Tu	6	33 5 27	sets		☾	eve.	
17	W	6	32 5 28	7 3		☾	1 5	
18	Th	6	31 5 29	7 56		☾	1 47	
19	Fr	6	30 5 30	8 47		☾	2 30	
20	Sa	6	29 5 31	9 43		☾	3 14	
21	Su	6	28 5 32	10 40		☾	3 59	
22	M	6	27 5 33	11 37		☾	4 46	
23	Tu	6	26 5 34	morn		☾	5 36	
24	W	6	25 5 35	0 35		☾	6 28	
25	Th	6	24 5 36	1 33		☾	7 23	
26	Fr	6	23 5 37	2 30		☾	8 21	
27	Sa	6	22 5 38	3 27		☾	9 20	
28	Su	6	21 5 39	4 20		☾	10 20	
29	M	6	21 5 39	5 10		☾	11 18	



GLENN SPRINGS MINERAL WATER

Natures Greatest Remedy

FOR DISEASES OF THE

Liver, Kidneys, Stomach
and Skin

Physians Prescribe it,

Patients Depend on it, and

Everybody Praises it.

1833
1903
Merchant's Gargling Oil
70

years the unexcelled Lini-
ment of international fame.
"Good for Man and Beast."

WILL CURE

Rheumatism,	Galls of a-l Kinds,
Boils, Corns,	Mange in Dogs,
Frost Bites,	Garget in Cows,
Etc.	Etc.

MANUFACTURED AT
LOCKPORT, N. Y.

STANDARD PREPARATIONS

MRS. WINSLOW'S SOOTHING SYRUP.
For Children Teething. 25 Cents a Bot-
tle. The Anglo-American Drug Co.,
Prop's., New York, N. Y.

BROWN'S BRONCHIAL TROCHES. For
Coughs and Colds. 25c., 50c. & \$1.00 a
Box. John I. Brown & Son, Proprietors,
Boston, Mass.

BROWN'S HOUSEHOLD PANACEA.
For Relieving Pain. 25 Cents a Bottle.
Curtis & Brown, Mfg. Co., Ltd. Prop's.,
New York, N. Y.

BROWN'S VERMIFUGE COMFITS or
Worm Lozenges. 25 Cents a Box. Cur-
tis & Brown, Mfg., Ltd., Prop's., New
York, N. Y.

BROWN'S CAMPH. SAPON. DENTI-
frice. For the Teeth. 25 Cents a Bot-
tle. Curtis & Brown Mfg. Co., Ltd.,
Prop's., New York, N. Y.

No Stock Is Complete Without These Articles

HENRY S JONES,

ATTORNEY AT LAW,

830 Broad Street, Augusta, Georgia.

Refers to N. L. Willet Drug Co. and Planters
Loan & Savings Bank.

Spring—Summer—Autumn—Winter

ANY SEASON OF THE
. . . YEAR TAKE . . .

WAMPOLE'S

TASTELESS PREPARATION

—OF—

COD LIVER OIL

**FOR COUGHS, COLDS,
CONSUMPTION
AND ALL WASTING DISEASES
THE BEST KNOWN TONIC.**

ALL DRUGGISTS SELL IT.

3d Month.

MARCH.

1904.

PHASES OF THE MOON.

<i>Eastern Standard Time.</i> D. H. M.	6	12	18	24	30
Full Moon.....	1 9 48 eve.	8 1 eve.	8 1 eve.	8 1 eve.	8 1 eve.
Last Quarter.....	8 1 eve.	17 0 37 mo.	24 4 37 eve.	31 7 44 mo.	
First Quarter.....	17 0 37 mo.	24 4 37 eve.	31 7 44 mo.		
Full Moon.....	31 7 44 mo.				

EQUATION OF TIME.

Day	1	2	3	4	5	6	7	8	9	10	11	12	13	14	15	16	17	18	19	20	21	22	23	24	25	26	27	28	29	30	31
Sun Slow	D.	M.	M.	M.	M.	M.	M.	M.	M.	M.	M.	M.	M.	M.	M.	M.	M.	M.	M.	M.	M.	M.	M.	M.	M.	M.	M.	M.	M.	M.	M.

VARIOUS PHENOMENA.

Day	Time	Event	Sun Rises	Sun Sets	Moon Rises	Moon Sets	Place	South
1 Tu	6 20	St. David.	5 40	5 41	risers.	6 54	Q	morning
2 W	6 19	Goldstrever, Prem Eng.	5 41	5 40	6 54	6 54	Q	0 16
3 Th	6 18	Chas. B. V. Rousd., '02	5 42	5 42	7 59	7 59	Q	1 11
4 Fr	6 17	Des. wave, of C. Amer., '02	5 42	5 42	9 17	9 17	Q	2 6
5 Sa	6 16	Senate con. Cab t. Off., '01	5 44	5 44	10 13	10 13	Q	2 59
6 Su	6 15	3d Sun. in Lent. [Sen., '01	5 45	5 45	11 15	11 15	Q	3 52
7 M	6 14	Sen. Pyre-el. Pres. pr. tm	5 46	5 46	morning	morning	Q	4 44
8 Tu	6 13	1st U. S. Congress 1789.	5 47	5 47	0 13	0 13	Q	5 35
9 W	6 12	Battle Hampton Rds, 1862	5 48	5 48	1 8	1 8	Q	6 26
10 Th	6 11	Boersdef. Bloemir'an, '00	5 49	5 49	1 58	1 58	Q	7 15
11 Fr	6 10	Pr. Henry sails ret. voy. '02	5 50	5 50	2 44	2 44	Q	8 3
12 Sa	6 9	Ex-Gv. Altsfeld, Ill., d., '02	5 51	5 51	3 27	3 27	Q	8 50
13 Su	6 8	4th Sunday in Lent.	5 52	5 52	4 40	4 40	Q	9 35
14 M	6 7	δ ♀ C.	5 53	5 53	4 40	4 40	Q	10 19
15 Tu	6 6	Maine admitted, 1820.	5 54	5 54	5 13	5 13	Q	11 3
16 W	6 5	δ ♀ C.	5 55	5 55	5 46	5 46	Q	11 46
17 Th	6 4	St. Patrick's Day.	5 56	5 56	sets.	sets.	Q	eve-29
18 Fr	6 3	δ ♀ C. [a fusion, 1902.	5 57	5 57	7 38	7 38	Q	1 13
19 Sa	6 2	Nebraska Dem. & Pop. est.	5 58	5 58	8 35	8 35	Q	1 57
20 Su	6 1	Centers ♀♀. Spring begins	5 59	5 59	9 32	9 32	Q	2 44
21 M	6 0	Luncheon captured, 1858.	6 0	6 0	10 30	10 30	Q	3 33
22 Tu	5 59	Just. R. S. Taft Ver. d. '02	6 1	6 1	11 26	11 26	Q	4 23
23 W	5 58	Battle Winchester, 1862.	6 2	6 2	morning	morning	Q	5 17
24 Th	5 57	Longfellow died, 1882.	6 3	6 3	0 23	0 23	Q	6 12
25 Fr	5 56	Hudson river disco., 1809	6 4	6 4	1 19	1 19	Q	7 8
26 Sa	5 55	δ ♀ C. Superior.	6 5	6 5	2 11	2 11	Q	8 5
27 Su	5 54	Ralm Sunday.	6 6	6 6	3 47	3 47	Q	9 2
28 M	5 53	Gen. Joubert died, 1900.	6 7	6 7	4 29	4 29	Q	9 58
29 Tu	5 52	Vera Cruz taken, 1847.	6 8	6 8	5 11	5 11	Q	10 54
30 W	5 51	Alaska purchased, 1867.	6 9	6 9	risers.	risers.	Q	11 49
31 Th	5 50	Calthoun died, 1850.	6 10	6 10	risers.	risers.	Q	morning

TAKE LIVER'S LIVER PILLS. 25 CENTS, POSTPAID.

4th Month.

APRIL.

1904.

PHASES OF THE MOON.

<i>Eastern Standard Time.</i> D. H. M.	6	12	18	24	30
Last Quarter.....	7 0 53 eve.	15 4 53 eve.	22 11 55 eve.	29 5 36 eve.	
New Moon.....	15 4 53 eve.	22 11 55 eve.	29 5 36 eve.		
First Quarter.....	22 11 55 eve.	29 5 36 eve.			
Full Moon.....	29 5 36 eve.				

EQUATION OF TIME.

Day	1	2	3	4	5	6	7	8	9	10	11	12	13	14	15	16	17	18	19	20	21	22	23	24	25	26	27	28	29	30
Sun Slow	D.	M.	M.	M.	M.	M.	M.	M.	M.	M.	M.	M.	M.	M.	M.	M.	M.	M.	M.	M.	M.	M.	M.	M.	M.	M.	M.	M.	M.	M.

VARIOUS PHENOMENA.

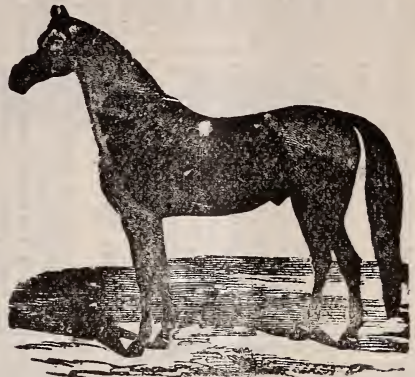
Day	Time	Event	Sun Rises	Sun Sets	Moon Rises	Moon Sets	Place	South
1 Fr	5 48	Good Friday, [died, 1902.	6 12	6 12	7 51	7 51	Q	0 43
2 Sa	5 47	Jun. H. Browne, Author,	6 13	6 13	8 57	8 57	Q	1 37
3 Su	5 46	Easter Sunday.	6 14	6 14	9 59	9 59	Q	2 31
4 M	5 45	Pres. Harrison died, 1841.	6 15	6 15	10 57	10 57	Q	3 24
5 Tu	5 44	Robt. Raikes died, 1811.	6 16	6 16	11 51	11 51	Q	4 16
6 W	5 43	Battle of Shiloh, 1862.	6 17	6 17	morning	morning	Q	5 8
7 Th	5 42	Earthquake in Mex., 1845	6 18	6 18	0 39	0 39	Q	5 57
8 Fr	5 41	Louisiana admitted, 1812.	6 19	6 19	1 24	1 24	Q	6 45
9 Sa	5 40	Surrender of Lee, 1865.	6 20	6 20	2 04	2 04	Q	7 31
10 Su	5 39	Low Sunday.	6 21	6 21	2 41	2 41	Q	8 16
11 M	5 38	Rowland Hill died, 1838.	6 22	6 22	3 17	3 17	Q	8 59
12 Tu	5 37	T. Dewitt Talmage, D. D.,	6 23	6 23	3 44	3 44	Q	9 43
13 W	5 36	δ ♀ C. [died, 1902.	6 24	6 24	4 19	4 19	Q	10 26
14 Th	5 35	δ ♀ C.	6 25	6 25	4 52	4 52	Q	11 9
15 Fr	5 34	Gen. Alex. C. McClurg	6 26	6 26	5 27	5 27	Q	11 54
16 Sa	5 33	δ ♀ C. [died, 1901.	6 27	6 27	sets.	sets.	Q	1 29
17 Su	5 32	2d Sunday after Easter.	6 28	6 28	8 23	8 23	Q	2 20
18 M	5 31	Battle of Cerro Gordo, 1847	6 29	6 29	9 22	9 22	Q	3 13
19 Tu	5 30	Col. Chas. Marshall, Balt.	6 30	6 30	10 19	10 19	Q	4 8
20 W	5 29	Va. admitted, '63 [d. '02	6 31	6 31	11 16	11 16	Q	5 3
21 Th	5 28	Battle San Jacinto, 1836.	6 32	6 32	morning	morning	Q	6 3
22 Fr	5 27	Frieding born, 1707.	6 33	6 33	0 58	0 58	Q	6 59
23 Sa	5 26	Burchan born, 1791.	6 34	6 34	1 43	1 43	Q	7 49
24 Su	5 25	3d Sunday after Easter.	6 35	6 35	2 27	2 27	Q	8 43
25 M	5 24	Land Office estab., 1812.	6 36	6 36	3 6	3 6	Q	9 36
26 Tu	5 23	W. Booth shot, 1865.	6 37	6 37	3 48	3 48	Q	10 29
27 W	5 22	Gen. Grant born, 1822.	6 38	6 38	4 29	4 29	Q	11 22
28 Th	5 21	Sol. Smith Russell d., 1902	6 39	6 39	risers.	risers.	Q	morning
29 Fr	5 20	Parson Brownlow d., 1877	6 40	6 40	risers.	risers.	Q	0 16
30 Sa	5 19	Ohio admitted, 1802.	6 41	6 41	risers.	risers.	Q	

A DEAD LOSS

That's a Horse or Mule who dies of Colic. Dead loss \$125. Can you afford it? If not, we say honestly you will never lose an animal in your life by Horse Colic if you but use

**Holleyman's
Compound Elixir**
50 Cents

Here or laid down
at your nearest So.
Ex. Co's. Office, free
of express to you.



For Horse Colic.

It will cure any case of Horse Colic under the Sun.

Don't wait until your Horse dies before you buy a bottle.

Capt. Jas. M. Smith, of Smithsonia, the largest farmer in Georgia, writes us: "I consider Holleyman's Elixir a splendid medicine for Horses and Mules—the best I have tried. Every owner of a horse or mule might save money by constantly keeping on hand this Elixir."

Dr. R. B. Kitchen, Mitchell, Ga., says: "I have used Holleyman's Tlixir in Horse Colic. I recommend it as a Specific."

S. S. Sanders & Co, Egypt, Ga., say: "Have sold it and used it; it is all it's claimed to be. Its effect is magical."

W. H. Jones, Stellaville, Ga., says: "I have been using Holleyman's Elixir one year and saved several horses' lives. It never fails in Horse Colic."

Capt. R. H. Walker, Appleton, S. C., says: "Worth its weight in gold to every farmer. I saved three horses' lives on my plantation in sixty days."

O. B. Brown, Stellaville, Ga., says: "Cured a nice mare that was dying with Colic. The best thing of the kind I ever saw."

S. A. Gray & Co., Waynesboro, Ga., say: "Have used Holleyman's Elixir for eight or nine years. As a preparation for Colic in Horses and Mules we believe it to be unequaled"

R. H. Wood, Veterinary Surgeon, Johnston, S. C., says: "I used it in several severe cases. One animal had been given up to die; a part of a bottle saved the animal's life. No horse owner should be without it."

J. F. A. Tufts, Drummer, says: "In one of my drumming trips of thirty days I cured three dangerous cases of Colic in Horses from my sample vial holding only one ounce."

W. H. McNorriil, M. D., Waynesboro, Ga., says: "Holleyman's Elixir is extensively used in this county. For many years I have found it to be an infallible remedy."

W. H. F. Rast & Bro., Swansea, S. C., say: "Holleyman's Compound Elixir is the best medicine of its kind and has given better satisfaction than anything we have ever sold"

We have crowds of testimony from
Doctors, Veterinary Surgeons, Merchants
and Farmers.

AUGUSTA DRUG COMPANY,
Manufacturers,
AUGUSTA, GA.

If you are building or refinishing, drop us a line and we will mail you finished specimens of wood and useful literature on wood finishing free for the asking.

BERRY BROTHERS,
LIMITED.

VARNISH MANUFACTURERS.

Baltimore Branch, No. 22 E. Lombard St

DETROIT, MICH.

TAKE YOUR CHOICE

Just take your choice. An attack of Fever, with Quinine as the treatment means a week or ten days lost from Business.

It means ten days of unhappiness for you and ten days of hard work and anxiety for those who love you. If you are a poor man, your time is worth much to your family. The rich man might better afford to suffer a loss of \$100.00 a day, as a result from enforced absence from business, than the poor man can lose the value of his labor. Johnson's Tonic has two cardinal points that should immediately commend it to every thinking man in this country.

First of all, it is harmless. Absolutely harmless. Harmless under all circumstances.

Second it is quick; it acts at once. In 30 minutes after its administration, it enters the blood and begins to undo the mischief caused by Malaria. It is the one great medicine that never disappoints. Now take your choice. Lie in bed for days, or maybe weeks, and poison your digestion with Quinine, and arise finally with all the life and vim taken out of you, or use Johnson's Tonic and be restored at once to perfect health. No loss of vital force. No loss of flesh. No waste of precious time. Take your choice.

A. B. GIRARDEAU, Savannah, Ga.

BLOOD AND SKIN DISEASES

Cured by B. B. B. Cures when all else fails.

Ulcers, Eating Sores, Cancer, Scrofula, Itching Skin, Scabs and Scales of Eczema, Ache and Pains in bones, back or joints, Syphilitic Blood Poison, Rotten Gums and Chronic Rheumatism, and all obstinate, deep-seated Blood troubles, are quickly cured by taking a few large bottles of Botanic Blood Balm (B. B. B.) We challenge the world for a case of Blood Disease that Botanic Blood Balm will not cure. The cures are permanent and not a patching up. Is your blood Thin? Skin Pale? All Run Down? As tired in the morning as when you went to bed? Pimples? Boils? Swollen Glands of Joints? Catarrh? Putrid Breath? Eruptions? Sores in Mouth or Throat? If so, your Blood is bad. Blood Balm will make the Blood Pure and Rich, Heal every Sore, Stop the Aches and Pains, Build up the broken-down body, and invigorate the old and weak. Botanic Blood Balm, the only perfect Blood Purifier made. Sold at Drug Stores, \$1.00 per large bottle, including complete directions. Trial treatment free by addressing Blood Balm Co., Atlanta, Ga. Don't hesitate, but write at once, describing trouble, and free personal medical advice given. Blood Balm (B. B. B.) Cures when all else fails. Thoroughly tested for over 30 years. Over 3,000 voluntary testimonials of cures by using B. B. B.

BLOOD BALM CO., Prop'rs.,
Atlanta, Ga.

MRS. BUSH'S SPECIFIC FOR BURNS AND SCALDS

Internal or external; from fire, acids, or lye.

Leaves no scar in healing and gives instant relief from pain.

Endorsed by Ex. Govs. Jos. E. Brown, H. D. McDaniel; Treas. of Ga. R. U. Hardeman; and Sec. of State Ga. Phil Cook, etc., etc.

MRS. W. H. BUSH, Winder, Ga.:—I have had occasion to use your valued SPECIFIC twice in my family—both the times for severe burns. Its effect was immediate, remarkable. I recommend it unhesitatingly as a most excellent remedy, at least for burns. Every family ought to keep it on hand.

C. P. WILCOX, Prof. of Modern Languages, University of Georgia.

MRS. BUSH.—In my experience as a Druggist there is nothing half so good for burns as Bush's Specific.

N. L. WILLET, Augusta, Ga.

Address, MRS. W. H. BUSH & CO., Winder, Ga.

or AUGUSTA DRUG CO., Augusta, Ga.

25c. & 50c. Bottles.

5th Month: MAY. 1904.

PHASES OF THE MOON.

Eastern Stand. Time. D. H. M.
 Last Quarter 7 6 50 mo.
 New Moon 15 5 58 mo.
 First Quarter 22 5 19 mo.
 Full Moon 29 3 55 mo.

EQUATION OF TIME.

D.	M.	S.	13	14	15	16	17	18	19
1	1	2	3	4	5	6	7	8	9
2	1	2	3	4	5	6	7	8	9
3	1	2	3	4	5	6	7	8	9
4	1	2	3	4	5	6	7	8	9
5	1	2	3	4	5	6	7	8	9
6	1	2	3	4	5	6	7	8	9
7	1	2	3	4	5	6	7	8	9
8	1	2	3	4	5	6	7	8	9
9	1	2	3	4	5	6	7	8	9
10	1	2	3	4	5	6	7	8	9
11	1	2	3	4	5	6	7	8	9
12	1	2	3	4	5	6	7	8	9
13	1	2	3	4	5	6	7	8	9
14	1	2	3	4	5	6	7	8	9
15	1	2	3	4	5	6	7	8	9
16	1	2	3	4	5	6	7	8	9
17	1	2	3	4	5	6	7	8	9
18	1	2	3	4	5	6	7	8	9
19	1	2	3	4	5	6	7	8	9
20	1	2	3	4	5	6	7	8	9
21	1	2	3	4	5	6	7	8	9
22	1	2	3	4	5	6	7	8	9
23	1	2	3	4	5	6	7	8	9
24	1	2	3	4	5	6	7	8	9
25	1	2	3	4	5	6	7	8	9
26	1	2	3	4	5	6	7	8	9
27	1	2	3	4	5	6	7	8	9
28	1	2	3	4	5	6	7	8	9
29	1	2	3	4	5	6	7	8	9
30	1	2	3	4	5	6	7	8	9
31	1	2	3	4	5	6	7	8	9

VARIOUS PHENOMENA.

D.	M.	S.	Sun Rises	Sun Sets	Moons Rises	Moons Sets	's Place	South.	H. M.
1	Su	1	5 19	6 41	8 41	8 41	m	1	10
2	M	1	5 18	6 42	9 39	9 39	m	2	03
3	Tu	1	5 17	6 43	10 32	10 32	f	2	56
4	W	1	5 16	6 44	11 18	11 18	f	3	48
5	Th	1	5 15	6 45	morn	morn	f	4	37
6	Fr	1	5 14	6 46	0 1	0 1	v	5	25
7	Sa	1	5 13	6 47	0 40	0 40	v	6	11
8	Su	1	5 12	6 48	1 15	1 15	w	6	55
9	M	1	5 11	6 49	1 47	1 47	w	7	38
10	Tu	1	5 10	6 50	2 18	2 18	w	8	21
11	W	1	5 9	6 51	2 52	2 52	κ	9	4
12	Th	1	5 9	6 51	3 27	3 27	κ	9	49
13	Fr	1	5 8	6 52	3 59	3 59	κ	10	34
14	Sa	1	5 8	6 53	4 38	4 38	κ	11	23
15	Su	1	5 7	6 53	sets.	sets.	κ	eye	13
16	M	1	5 6	6 54	8 12	8 12	κ	1	7
17	Tu	1	5 6	6 55	9 10	9 10	κ	2	2
18	W	1	5 5	6 56	10 4	10 4	κ	2	58
19	Th	1	5 4	6 56	10 56	10 56	κ	3	55
20	Fr	1	5 4	6 57	11 44	11 44	κ	4	51
21	Sa	1	5 3	6 57	morn	morn	κ	5	45
22	Su	1	5 3	6 57	0 27	0 27	κ	6	38
23	M	1	5 2	6 58	1 6	1 6	κ	7	30
24	Tu	1	5 2	6 58	1 45	1 45	κ	8	22
25	W	1	5 1	6 59	2 26	2 26	κ	9	14
26	Th	1	5 0	7 0	3 45	3 45	κ	10	6
27	Fr	1	5 0	7 0	4 27	4 27	κ	11	52
28	Sa	1	5 0	7 1	rises.	rises.	κ	11	52
29	Su	1	4 59	7 1	8 21	8 21	κ	morn	0 45
30	M	1	4 58	7 2	9 11	9 11	κ	1	37
31	Tu	1	4 58	7 2	9 11	9 11	κ	1	37

TAKE GILDERS' LIVER PILLS. 25 CENTS, POSTPAID.

6th Month: JUNE. 1904.

PHASES OF THE MOON.

Eastern Stand. Time. D. H. M.
 Last Quarter 6 0 53 mo.
 New Moon 13 4 10 eve.
 First Quarter 20 10 11 mo.
 Full Moon 27 3 23 eve.

EQUATION OF TIME.

D.	M.	S.	1	2	3	4	5	6	7
1	1	2	3	4	5	6	7	8	9
2	1	2	3	4	5	6	7	8	9
3	1	2	3	4	5	6	7	8	9
4	1	2	3	4	5	6	7	8	9
5	1	2	3	4	5	6	7	8	9
6	1	2	3	4	5	6	7	8	9
7	1	2	3	4	5	6	7	8	9
8	1	2	3	4	5	6	7	8	9
9	1	2	3	4	5	6	7	8	9
10	1	2	3	4	5	6	7	8	9
11	1	2	3	4	5	6	7	8	9
12	1	2	3	4	5	6	7	8	9
13	1	2	3	4	5	6	7	8	9
14	1	2	3	4	5	6	7	8	9
15	1	2	3	4	5	6	7	8	9
16	1	2	3	4	5	6	7	8	9
17	1	2	3	4	5	6	7	8	9
18	1	2	3	4	5	6	7	8	9
19	1	2	3	4	5	6	7	8	9
20	1	2	3	4	5	6	7	8	9
21	1	2	3	4	5	6	7	8	9
22	1	2	3	4	5	6	7	8	9
23	1	2	3	4	5	6	7	8	9
24	1	2	3	4	5	6	7	8	9
25	1	2	3	4	5	6	7	8	9
26	1	2	3	4	5	6	7	8	9
27	1	2	3	4	5	6	7	8	9
28	1	2	3	4	5	6	7	8	9
29	1	2	3	4	5	6	7	8	9
30	1	2	3	4	5	6	7	8	9
31	1	2	3	4	5	6	7	8	9

VARIOUS PHENOMENA.

D.	M.	S.	Sun Rises	Sun Sets	Moons Rises	Moons Sets	's Place	South.	H. M.
1	W	1	4 57	7 3	9 56	9 56	f	2	28
2	Th	1	4 57	7 3	10 37	10 37	v	3	17
3	Fr	1	4 57	7 3	11 13	11 13	v	4	4
4	Sa	1	4 56	7 4	11 47	11 47	w	4	49
5	Su	1	4 56	7 4	morn	morn	w	5	33
6	M	1	4 56	7 4	0 19	0 19	w	6	16
7	Tu	1	4 55	7 5	0 50	0 50	κ	6	59
8	W	1	4 55	7 5	1 23	1 23	κ	7	42
9	Th	1	4 55	7 5	1 59	1 59	κ	8	27
10	Fr	1	4 54	7 6	2 34	2 34	κ	9	14
11	Sa	1	4 54	7 6	3 12	3 12	κ	10	3
12	Su	1	4 54	7 6	3 57	3 57	κ	10	56
13	M	1	4 54	7 6	4 46	4 46	κ	11	51
14	Tu	1	4 54	7 6	sets.	sets.	κ	eye	48
15	W	1	4 54	7 6	8 51	8 51	κ	1	47
16	Th	1	4 53	7 7	9 40	9 40	κ	2	44
17	Fr	1	4 53	7 7	10 27	10 27	κ	3	41
18	Sa	1	4 53	7 7	11 9	11 9	κ	4	35
19	Su	1	4 53	7 7	11 48	11 48	κ	5	28
20	M	1	4 53	7 7	morn	morn	κ	6	20
21	Tu	1	4 53	7 7	0 23	0 23	κ	7	10
22	W	1	4 53	7 7	1 6	1 6	κ	7	1
23	Th	1	4 53	7 7	1 44	1 44	κ	8	53
24	Fr	1	4 53	7 7	2 26	2 26	κ	9	44
25	Sa	1	4 53	7 7	3 8	3 8	κ	10	37
26	Su	1	4 53	7 7	3 56	3 56	κ	11	29
27	M	1	4 54	7 6	rises.	rises.	κ	morn	
28	Tu	1	4 54	7 6	7 51	7 51	κ	1	10
29	W	1	4 54	7 6	8 34	8 34	κ	1	10
30	Th	1	4 54	7 6	9 12	9 12	κ	1	58

Sun Fast.

Sun Rises H. M. Moon Sets H. M. 's Place C. South. H. M.

1 Elec. Municipal officers in Cuba, '01
 2 Corp. Christi. Ministry resigns
 3 French Ministry resigns
 4 Sa 1st Sunday after Trinity.
 5 Va. Con. ad.'s new Cons. '02
 6 Coalstrike Va. & W. Va., '02
 7 Pres. Jackson died, 1845.
 8 House begins con. of Pac
 9 [cable bill, 1902
 10 2d Sunday after Trinity.
 11 S. U.S. flag adp'ted, 1777
 12 Arkansas admitted, 1836.
 13 4th conv. Zionist, Phila. '01
 14 Battle Bunker Hill, 1776.
 15 McArthur ord. send trps to
 16 3d Sun. aft Trin. [China, '00
 17 Accession Qr. Victoria, '37
 18 enters 56. Summer beg.
 19 St. Paul rep. torp. boat, '98
 20 Battle of Solferino, 1859.
 21 St. John Baptist.
 22 Guster defeated, 1876.
 23 4th Sunday after Trinity.
 24 Corn. Vanderbilt b. 1794.
 25 Oregon ashore, China, 1900
 26 Huxley died, 1895.
 27 Tax on Tea, 1767.

WHITTEMORE'S POLISHES

THE WORLD'S STANDARD

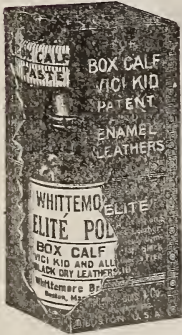
The Oldest and Largest Manufacturers of Shoe Polishes in the World.

ONCE USED ALWAYS USED



"GILT EDGE"
The only black dressing for Ladies' and children's shoes that positively contains oil. Softens and preserves. Imparts a beautiful lustre. Always put up in 6 oz. bottles (not in 4 oz. or less, as is often the case). Its use saves time, labor and brushes, as it **Shines Without Brushing.** Always Ready to Use. Per Gross, - \$24.00

"ELITE" COMBINATION.



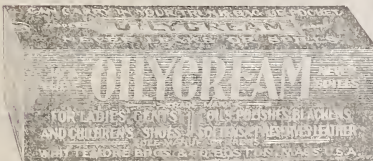
The only first-class article for Ladies and Gents' "Box Calf," "Vici Kid" and all Black Shoes. The only polish endorsed by the manufacturers of Box Calf Leather. Contains oil and positively nourishes and preserves leather and makes it wear longer. Blacks and polishes.

LARGE SIZE,
Per Gross, \$24.00.

"BABY ELITE" COMBINATION.

10c. size, per gross, \$10.00.

OILYCREAM POLISH



For all kinds of black shoes. A polishing cloth and a cloth for applying the cream in every carton. Each tube contains enough for about 100 shines and the polish is so durable that one or two applications a week is sufficient. This cream is a perfect leather food and makes shoes wear longer.

Can carry it in your trunk, bag or pocket. Never leaks or spills. A complete shoe polishing outfit for 25 cents.

Large size, per gross...\$24.00



"BOSTON" WATERPROOF POLISH.

A black liquid for Men's and Boys' Shoes. Produces a patent leather shine without brushing. Per Gross, \$24.00.

"BOSTON JUNIOR."

10c. size, per gross, \$10.00.

"CHAMPION."

Black Liquid Friction Polish in 6-ounce bottles, for Ladies' and Gents' box calf, vici kid, patent and enameled leather shoes, works without paste, and polishes with a brush or cloth. A polishing cloth in every carton.

Per Gross...\$24.00

"Champion, Jr." Ten-Cent Size

Per Gross\$9.00



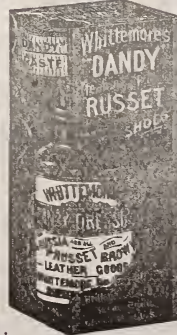
FRENCH GLOSS.

For Ladies' and Children's Shoes.

Warranted superior to the best 10c. black dressing in the market, (and put up handsomer) with handsome three color lithographed cartons and wood caps over corks.

Shines without Brushing.

Per gross, \$9.00.



"DANDY" RUSSET COMBINATION

For cleansing and polishing all kinds of russet, tan or yellow colored boots and shoes.

Large Size Per Gross, \$24.00.

Star Russet Combination 10-Cent Size Per Gross, \$9.00

Russet Pastes. Dandy, large, per gross, \$9.00 Red Box, medium per gross, \$5.00

DODGE'S

C. C. C. C.

Certain Chicken Cholera Cure

The only specific for Chicken Cholera, and in all domestic fowles, yet discovered. It will arrest the disease in 15 minutes. One package sufficient for 50 adult fowls as a preventive, or for 25 sick ones.

R. P. DODGE, ATLANTA, GA.

References given on application. Sold by all Wholesale and Retail Druggists. Price 25c. per package; sent by mail, 30c.

Baltimore, Oct. 24.

Before you purchase another package of Horse and Cattle Powder or any Stock Food send to the undersigned for

Stock Medicines,

vs.

Stock Foods,

being an exposition of the fraudulent Stock Foods, by the United States Government.

If you use any of these Foods, you had better get this copy before using any more. You will also find out why FOUTZ'S HORSE AND CATTLE POWDER IS "THE BEST"

When children have worms the safest and surest agent for their removal is

Shriner's Indian Vermituge,

25c per bottle from dealers.

All literature free on application.

The David E. Foutz Co.

Baltimore, Md.

There is scarcely a lady in the land but could use to advantage at certain periods of her life.

RISLEY'S "PHILOTOKEN"

OR FEMALES' FRIEND.

As it is a very reliable nervous antidote in all cases of sleeplessness arising from an irritable stomach, or nervous exhaustion in MALE or FEMALE, and never leaves any bad effects, also for painful monthly periods it modifies and relieves pain and distress. For women enciente, it is a pacifier, and relieves, and enables mothers to pass the dangerous period with ease. We have received thousands of letters from customers who have been using the same in their families for upwards of 50 years, and could not get along without. A pamphlet of certificates will be mailed by writing to

RISLEY DRUG COMPANY,

SUCCESSORS TO CHARLES F. RISLEY & CO.

64 Cortlandt Street, New York.

Sold by all Druggists, at \$1.00 a bottle.

RISLEY EXTRACT OF BUCHU is one of Georgia's oldest and reliable medicines, and is a RELIEF and CURE for kidney and bladder troubles. Price \$1.00.

MRS. WANNER'S "SEPIA" is a clean, certain, quick hair color. Price \$1.00.

RISLEY EXTRACT OF WITCH-HAZEL, in 8 ounce bottles, is the purest, strongest and best medicinal Witch-Hazel made. Ask for Risley Witch-Hazel, as it is the best cure for sprains, bruises, swellings, aches, &c. Price 25 cents a bottle.

DR. SALTER'S

EYE LOTION....

FOR SORE AND INFLAMED EYES HAS NO EQUAL

It will cure any case of Sore Eyes in a very short time, 24 to 48 hours. It does not pain the eyes when applied, therefore it is the best **EYE LOTION** made for children. For granulated lids, weakness of the eyes, redness of the eyes it has no equal.

Ask For SALTER'S EYE LOTION

And accept no other, for there are none "just as good." All Dealers sell it.

25 CENTS PER BOTTLE.

Manufactured at the REFORM DISPENSARY, 68 S. Broad Street,
ATLANTA, GEORGIA.

THERE IS ONLY ONE GENUINE

SYRUP OF FIGS

The Genuine is Manufactured by the California Fig Syrup Co.

The full name of the Company, California Fig Syrup Co., is printed on the front of every package of the genuine.

The Genuine—Syrup of Figs—is for Sale, in Original Packages Only, by Reliable Druggists Everywhere.

Knowing the above will enable one to avoid the fraudulent imitations made by piratical concerns and sometimes offered by unreliable dealers, the imitations are known to act injuriously and should therefore be declined.

Buy the genuine always if you wish to get its beneficial effects.

It cleanses the system gently yet effectually, dispels colds and headaches when bilious or constipated, prevents fevers and acts best on the kidneys, liver, stomach and bowels, when a laxative remedy is needed by men, women or children. Many millions know of its beneficial effects from actual use and of their own personal knowledge. It is the laxative remedy of the well-informed.

Always buy the genuine Syrup of Figs, Manufactured by the

CALIFORNIA FIG SYRUP CO.

New York, N. Y.

San Francisco, Cal.

Louisville, Ky.

Price Fifty Cents Per Bottle.

Dr. Daniels' Warranted Veterinary Medicines

are better than insurance, they will cure your stock of sickness, also



DR. A. C. DANIELS.

keep them from being sick. Send three cents for Veterinary book on diseases and treatment. A full line

of medicines are kept where you get this catalogue.

G. F. GOODNOW, Gen'l. Agent.

145 N. Sixth Street,

PHILADELPHIA, PA.

The Quakers are Honest People.

The Quaker Herb Tonic is not only a blood purifier, but a Blood maker for Pale, Weak and Debilitated people who have not strength nor blood. It acts as a tonic, it regulates digestion, cures dyspepsia and lends strength and tone to the nervous system. It is a medicine for weak women. It is a purely vegetable medicine, and can be taken by the most delicate. Kidney disease, Rheumatism and all diseases of the Blood, Stomach and Nerves soon succumb to its wonderful effect on the human system. Thousands of people in Georgia recommend it. Price \$1.00.

QUAKER PAIN BALM is the medicine that the Quaker Doctor made all of his quick cures with. It's a new and wonderful medicine for Neuralgia, Toothache, Backache, Rheumatism, Sprains, Pain in Bowels; in fact, all pains can be relieved by it. Price 25c. and 50c.

QUAKER WHITE WONDER SOAP, a medicated soap for the skin, scalp and complexion. Price 10c. a cake.

QUAKER HEALING SALVE, a vegetable ointment for the cure of tetter, eczema and eruptions of the skin. Price 10c. a box.

FOR SALE BY ALL DRUGGISTS.

F. A. DILLINGHAM, Proprietor,
Cincinnati.



A VALUABLE REMEDY FOR

Indigestion, Heartburn and Sick Headache

PACKED IN HANDSOME GLASS DISPLAY JARS
OR ATTRACTIVE BOXES.

Write for Free Sample and Advertising Matter.

—Manufactured Solely By The—

SODA MINT GUM COMPANY

Order from Augusta Drug Co.

Pittsburg, Pa.

The Southern Farm Gazette,

Starkville, Mississippi.

Issued semi monthly; column width 13 ems; column length 12 inches; four columns to page; 16 pages in Journal; price 50 cents.

This Journal is published where the Agricultural College and Experiment Stations are located and is edited by men who write from their store of experience in a practical, common sense way. The articles in the Farm, Dairy, Poultry and Orchard Departments are all timely, practical, and especially adapted to Southern Agriculture.

Send for sample copy.

Address

SOUTHERN FARM GAZETTE,

STARKVILLE, MISS.



TETLOW'S

—SUPERB—

GOSSAMER

For the Complexion.

FLESH WHITE
BRUNETTE.

The perfection of powders, absolutely pure and harmless, dainty and refined.

Write us for the new window display, the most unique advertisement ever shown.

WHAT IS HOME WITHOUT A BOTTLE

—OF—

DR. TICHENORS ANTISEPTIC

TO USE IN CASE OF ACCIDENT OR SUDDEN SICKNESS

Nothing like it for Cuts, Bruises,
Wire-Cuts, Burns, Scalds or any
Wound or Inflammation.

BUY A BOTTLE OR WRITE TO

SHERROUSE MEDICINE CO.

New Orleans, La., for Free Sample.

PEERLESS HEADACHE TABLETS

SICK, PERIODIC, NEURALGIA,
SPINAL, NERVOUS ♦ ♦ ♦ ♦

PEERLESS HEADACHE TABLETS CONTAIN NO MORPHINE

Peerless Headache Tablets Cure, by actual count, 36 out of 37 Headaches. 12c. postpaid, per box of one dozen Tablets.

AUGUSTA DRUG CO., OR N. L. WILLET DRUG CO
AUGUSTA, GEORGIA.

10th Month. OCTOBER. 1904.

PHASES OF THE MOON.

Eastern Stand. Time. D. H. M.

Last Quarter.....	2 8 52 mo.
New Moon.....	9 0 25 mo.
First Quarter.....	16 0 54 mo.
Full Moon.....	24 5 56 mo.
Last Quarter.....	31 6 13 eve.

EQUATION OF TIME.

D.	1	10	19	28	37	46	55	64
M.	1	10	19	28	37	46	55	64
Sun Past.								

VARIOUS PHENOMENA.

Day	Mo.	Wee.	Sun Rises	Sun Sets	Moon Rises & Sets	Moon's Place	Moon South.	VARIOUS PHENOMENA.	
								H. M.	H. M.
1	Sa		6 9	5 51	10 39	♋	4 54	Sir Ed. Landseer died, 1873	
2	Su		6 10	5 50	11 36	♌	5 47	18th Sunday after Trinity.	
3	M		6 11	5 49	morn	♍	6 42	Neg. con. Rep. org. S. C. '00	
4	Tu		6 12	5 48	0 38	♎	7 38	Battle of Corinth, 1862.	
5	W		6 13	5 47	1 42	♏	8 34	Body of Zola buried at	
6	Th		6 14	5 46	2 50	♐	9 30	♋ ♄ ♃	
7	Fr		6 15	5 45	4 1	♑	10 26	♋ ♄ ♃	
8	Sa		6 16	5 44	5 10	♒	11 22	John Hancock died, 1793.	
9	Su		6 17	5 43	sets.	♓	12 17	19th Sunday after Trinity.	
10	M		6 18	5 42	6 53	♈	1 13	♄ ♃ ♃	
11	Tu		6 19	5 41	7 38	♉	2 9	Afghan war ended, 1844.	
12	W		6 20	5 40	8 25	♊	3 4	Gen. R. E. Lee died, 1870.	
13	Th		6 21	5 39	9 15	♋	3 58	Sir Herb's cred'ls Wash.,	
14	Fr		6 22	5 38	10 7	♌	4 51	Wm. Penn'b, 1644, [1902.]	
15	Sa		6 23	5 37	11 1	♍	5 42	Kosciusko died, 1817.	
16	Su		6 24	5 36	11 55	♎	6 31	20th Sunday after Trinity.	
17	M		6 25	5 35	morn	♏	7 18	♄ ♃ ♃	
18	Tu		6 26	5 34	0 50	♐	8 2	♄ ♃ ♃	
19	W		6 27	5 33	1 43	♑	8 46	Battle Chicomanga, 1863.	
20	Th		6 28	5 32	2 39	♒	9 29	Chas Dud. Warren d., '00	
21	Fr		6 29	5 31	3 33	♓	10 11	Battle Trafalgar, 1805.	
22	Sa		6 30	5 30	4 23	♈	10 54	E. B. Washburn d., 1887.	
23	Su		6 31	5 29	5 18	♉	11 38	21st Sunday after Trinity.	
24	M		6 32	5 28	rises.	♊	morn	Dan'l Webster died, 1852.	
25	Tu		6 33	5 27	6 19	♋	0 23	Battle Balaclava, 1854.	
26	W		6 34	5 26	7 0	♌	1 10	Von Molke born, 1800.	
27	Th		6 35	5 25	7 45	♍	1 59	U. S. Consul Osborn d. '01	
28	Fr		6 36	5 24	8 36	♎	2 50	Battle White Plains, 1776.	
29	Sa		6 37	5 23	9 30	♏	3 43	Mergenthaler died, 1899.	
30	Su		6 38	5 22	10 28	♐	4 37	23d Sunday after Trinity.	
31	M		6 39	5 21	11 30	♑	5 31	♄ ♃ ♃ Superior.	

9th Month. SEPTEMBER. 1904.

PHASES OF THE MOON.

Eastern Stand. Time. D. H. M.

Last Quarter.....	2 9 58 eve.
New Moon.....	9 3 43 eve.
First Quarter.....	16 10 13 mo.
Full Moon.....	24 0 50 eve.

EQUATION OF TIME.

D.	1	10	19	28	37	46	55	64
M.	1	10	19	28	37	46	55	64
Sun Past.								

VARIOUS PHENOMENA.

Day	Mo.	Wee.	Sun Rises	Sun Sets	Moon Rises & Sets	Moon's Place	Moon South.	VARIOUS PHENOMENA.	
								H. M.	H. M.
1	Th		5 38	6 22	10 20	♋	4 28	Battle Chantilly, Va., 1862.	
2	Fr		5 39	6 21	11 5	♌	5 16	Wm. Howe, lawyer, N. Y.	
3	Sa		5 40	6 20	11 55	♍	6 7	Thiers died, 1877. Id., 1902	
4	Su		5 41	6 19	morn	♎	7 1	14th Sunday after Trinity.	
5	M		5 42	6 18	0 49	♏	8 57	Malta taken by Brit, 1800.	
6	Tu		5 43	6 17	1 50	♐	9 54	Mayflower sailed, 1620.	
7	W		5 44	6 16	2 56	♑	10 51	♋ ♄ ♃	
8	Th		5 45	6 15	4 5	♒	11 48	Earthq'k shock Pyrenees	
9	Fr		5 46	6 14	5 15	♓	12 44	Geneva award paid, 1873.	
10	Sa		5 47	6 13	sets.	♈	1 41	♄ ♃ ♃	
11	Su		5 48	6 12	7 40	♉	2 34	15th Sunday after Trinity.	
12	M		5 49	6 11	8 20	♊	3 27	Battle of Chapultepec, 1847.	
13	Tu		5 50	6 10	9 3	♋	4 23	Gen. Jno. Towney d., 1902.	
14	W		5 51	6 9	9 48	♌	5 16	Battle Boonesboro, 1862	
15	Th		5 52	6 8	10 35	♍	6 8	♄ ♃ ♃ Inferior. Inom. '02	
16	Fr		5 53	6 7	11 24	♎	7 18	Sp'kr Hend'son declines.	
17	Sa		5 54	6 6	morn	♏	8 13	Wash'ngtn's farewell, 1796.	
18	Su		5 55	6 5	0 15	♐	9 8	16th Sunday after Trinity.	
19	M		5 56	6 4	1 9	♑	9 35	Chas. Latrobe, Civ. Eng.	
20	Tu		5 57	6 3	2 2	♒	10 21	♄ ♃ ♃ Idied, 1902.	
21	W		5 58	6 2	2 56	♓	10 48	Ember Day.	
22	Th		5 59	6 1	3 40	♈	11 31	Mormonism founded, 1827	
23	Fr		6 0	6 0	4 45	♉	morn	♄ enters ♌. Autumn beg	
24	Sa		6 1	5 59	5 58	♊	0 13	Ember Day. Ember Day.	
25	Su		6 2	5 58	6 34	♋	1 40	17th Sunday after Trinity.	
26	M		6 3	5 57	7 6	♌	2 25	♄ ♃ ♃ Il'sevelt, 1904, '02	
27	Tu		6 4	5 56	8 20	♍	3 13	Montana Rep's declare for	
28	W		6 5	5 55	9 1	♎	4 2	Slaves freed in Brazil, 1872	
29	Th		6 6	5 54	9 1	♏	5 4	Michaelmas Day.	
30	Fr		6 7	5 53	9 48	♐	6 2	Whitefield died, 1770.	

TAKE GILDER'S LIVER PILLS. 25 CENTS, POSTPAID.

SUN SANITARY FLUID

The Ideal Disinfectant

True Germicide
and Deodorizer



A Powerful An-
tiseptic and
Prophylactic

FOR THE SANITARY PURIFICATION

of Dwellings, Water Closets, Schools, Slaughter Houses, Stables, Sinks, Hospitals, etc.

NON-POISONOUS for domestic use and animals.

ODOR is agreeable, wholesome and refreshing.

DILUTE as per directions—1 gallon to 50 gallons water.

Prices—1 pint 20c.; 1 quart bottle 35c.; 1 gallon can \$1.00;
25 to 50 gallons 75c. per gallon; container bbl extra.



Are different from all other medicines. Each performs a specific duty, thus doing away with drastic purgatives and curing by the

Mild Power Theory.

One Pink Pill touches the liver, removes the bile, the bile moves the bowels. The Tonic Pellet does the rest.



Have one? Sample free at any store. Complete Treatment, 25 doses 25c.

BROWN MANUFACTURING CO.,
Saint Louis, Mo., and Greeneville, Tenn.

We Emphatically Assert

and our assertion is backed up by the thousands who have tested it, that

HILTON'S LIFE FOR THE LIVER AND KIDNEYS

is the "ne plus ultra" of Liver and Kidney remedies. All disorders of the Liver, Kidneys, Stomach and Bowels quickly disappear with its use.

Price 25c., 50c. and \$1.00 Bottles.

Prepared by LIFE MEDICINE CO.,
SPARTANBURG, S. C. Sold by AU-
GUSTA DRUG CO., AUGUSTA, GA.

Pratt & Lambert's Hard Oil Finish. Pratt & Lambert's Varnishes. . . .

These world-wide known goods are of the highest quality. In them you get the highest value and excellence without a fancy price. Specify them in your paint orders.

FLOUR VARNISH, WOOD FILLERS, CRYSTAL WHITE ENAMEL COACH VARNISH,
LIGHT HARD OIL, &c. FULL LINE KEPT BY

N. L. WILLET DRUG CO., Agents,
AUGUSTA, GEORGIA.

HUBERT'S COLIC DROPS

THE BABY'S FRIEND

A certain and quick cure for COLIC and all PAINFULNESS of the stomach, and for FRETFULNESS and RESTLESSNESS in Infants and Children. Better than anything else on the market for such cases. Letters received every day. It does all claimed for it. See the high praise. See certificates of Dr. Trapper.

Sold by Augusta Drug Co. and other Druggists.

Made by

R. W. HUBERT, M. D.,
Warrenton, Georgia.

L. C. Hayne, Pres. Ohas. C. Howard, Cashier.

PLANTERS LOAN AND SAVINGS BANK

707 Broad Street, Augusta, Ga.

SAVINGS ACCOUNTS SOLICITED. LEGAL DEPOSITORY FOR TRUST FUNDS.

The accounts of Guardians, Agents, Trustees, Administrators and Funds in Litigation are authorized to be kept in this bank by act of the legislature. Interest at 4 per cent. compounded January and July of each year.

4 Per Cent Interest Paid on Deposits.

MOORE BROS. GENERAL COW DRINK

Prevents and Cures all Fevers in Cows, Milk Fever, Bloating, Garget, Maw Bound, Colic, etc., 50c. per can.

Moore Bros. Gall Powder 50c. and \$1 per can. Cures Galled Shoulders and all Skin Abrasions. Write for Pamphlet Free. "Diseases of Live Stock."

MOORE BROS., Veterinary Surgeons.

Albany, New York.

Our Remedies for sale by Druggists and Dealers.

THE G. F. P. TREATMENT OF FEMALE DISEASES

Is composed of G. F. P. (Gerstle's Female Panacea) and St. Joseph's Liver Regulator, and by its use the blood becomes purer richer and of stronger revitalizing power; the heart is steadied and strengthened; the lung expansion increases; the appetite and digestion become natural; the monthly periods regular; there are no pains, no suppression, no flooding, no headache, no backache, no restless nights or languid days.

All this and more the G. F. P. Treatment will do for women.

G. F. P. for the sex organs, supplemented by St. Joseph's Liver Regulator for the liver, stomach and bowels is a treatment which female diseases have never yet been able to resist, and every woman should have this knowledge that she may cure herself with a remedy that is absolutely sure and which she can use in the privacy of her home.

"CUTILINE," Plain.

A Soluble Family Remedy for Burns, Skin Diseases, Hemorrhoids, Sun Burn, Chillsblains; and taken internally cures Croup, Coughs, Sore Throats etc.

Large 3 oz. Glass Jars, Price 10c.

Be sure and ask for Cutiline, and see that it bears the name of

KEYSTONE DRUG COMPANY.

SO. BOSTON, VA.

WILD CHERRY COUGH CURE

with it and know just what it will. We've had a lifetime experience do. Our promise to you

IS A SAFE, EASY and QUICK CURE

Wild Cherry Cough Cure
is 25 cents a bottle.

N. L. Willet Drug Co.,

Augusta, Ga.

NONE BETTER FEW AS GOOD

OUR
"PEERLESS"

GRADE OF

Hard Oil Finish,
Interior Varnish,
Spar Varnish,
Floor Varnish.

Unique Liquid Wood Filler and Surfacer,
Japans and Driers.

Always Reliable, Uniform and Economical. They make Customers and they hold them. You would do well to give them a trial. Write for Samples and Prices.

ATLANTIC DRIER & VARNISH COMPANY,

McKEAN AND SWANSON STREETS, PHILADELPHIA.

STRAIGHTEN YOUR HAIR



Take the curls out of it, make it soft and glossy by using

Carpenter's Ox Marrow Pomade

(Beware of Imitations.)

Use a little once a week—that is all that is necessary. Soft, silky hair and a healthy scalp are the results. Makes the hair grow, too.

PRICE, 25 CENTS.

Buy it of your druggist, or send us the price in stamps. Address, **CARPENTER & CO.,** Louisville, Ky.

AUGUSTA DRUG COMPANY,
Wholesale Distributors,
Augusta, Ga.

KILL

The germs which cause and produce disease, sickness and death with the greatest and only germ killer on the market.

GUARDIAN ANGEL REMEDY,

the original Swamp Angel Medicine. \$5 Treatment for Consumption; \$3 Treatment for Rheumatism; \$1 Treatment for Catarrh and the Blood.

50c. & \$1 Bottles. All Druggists.

Guardian Angel Remedy Co.

BALTIMORE, MD.

WHOLESALE.

11th Month. NOVEMBER. 1904.

PHASES OF THE MOON.				EQUATION OF TIME.			
<i>Eastern Stand. Time. D. H. M.</i>							
New Moon.....	7	10	37	morn	16	19	19
First Quarter.....	14	7	35	1	16	16	1
Full Moon.....	22	10	12	13	14	14	1
Last Quarter.....	30	2	38	17	14	14	1
				18	16	16	4
				19	16	16	9
				20	16	16	16
				21	14	14	21
				22	13	13	28
				23	13	13	5
				24	13	13	13
				25	14	14	21
				26	14	14	5
				27	14	14	13
				28	14	14	21
				29	14	14	5
				30	13	13	13
				31	13	13	21

PHASES OF THE MOON.				EQUATION OF TIME.			
<i>Eastern Stand. Time. D. H. M.</i>							
New Moon.....	7	10	37	morn	16	19	19
First Quarter.....	14	7	35	1	16	16	1
Full Moon.....	22	10	12	13	14	14	1
Last Quarter.....	30	2	38	17	14	14	1
				18	16	16	4
				19	16	16	9
				20	16	16	16
				21	14	14	21
				22	13	13	28
				23	13	13	5
				24	13	13	13
				25	14	14	21
				26	14	14	5
				27	14	14	13
				28	14	14	21
				29	14	14	5
				30	13	13	13
				31	13	13	21

TAKE GILDER'S LIVER PILLS. 25 CENTS, POSTPAID.

12th Month. DECEMBER. 1904.

PHASES OF THE MOON.				EQUATION OF TIME.			
<i>Eastern Stand. Time. D. H. M.</i>							
New Moon.....	6	10	46	ve	46	44	11
First Quarter.....	14	5	7	1	46	44	11
Full Moon.....	22	1	1	2	46	44	11
Last Quarter.....	29	10	46	3	46	44	11
				4	46	44	11
				5	46	44	11
				6	46	44	11
				7	46	44	11
				8	46	44	11
				9	46	44	11
				10	46	44	11
				11	46	44	11
				12	46	44	11
				13	46	44	11
				14	46	44	11
				15	46	44	11
				16	46	44	11
				17	46	44	11
				18	46	44	11
				19	46	44	11
				20	46	44	11
				21	46	44	11
				22	46	44	11
				23	46	44	11
				24	46	44	11
				25	46	44	11
				26	46	44	11
				27	46	44	11
				28	46	44	11
				29	46	44	11
				30	46	44	11
				31	46	44	11

VARIOUS PHENOMENA.				Moon Rises & Sets.				Moon's Place South.						
Day	Time	Event	Day	Time	Event	Day	Time	Place	Day	Time	Event	Day	Time	Event
1	Th	J. Brutus Booth died, 1862	7	2	4	58	0	38	7	1	♈	7	1	♈
2	Fr	♂ ♀ ☾ [rec. Kruger, 1900.	7	2	4	58	1	41	7	53	♈	7	53	♈
3	Sa	Emp. Germany decline to	7	3	4	57	2	45	7	46	♈	7	46	♈
4	Su	2d Sunday in Advent.	7	4	4	56	3	53	7	39	♈	7	39	♈
5	M	Hen. Cutler, comp., d., '02	7	4	4	56	5	0	7	33	♈	7	33	♈
6	Tu	Jefferson Davis died, 1889.	7	5	4	55	6	4	7	28	♈	7	28	♈
7	W	Ney shot, 1815.	7	5	4	55	sets.		7	24	♈	7	24	♈
8	Th	♂ ♀ ☾	7	5	4	55	6	34	7	19	♈	7	19	♈
9	Fr	Barge Chas. Foster, sank,	7	5	4	55	7	30	7	12	♈	7	12	♈
10	Sa	♂ ♀ ☾ [Lake Erie, 1900.	7	6	4	54	8	26	7	3	♈	7	3	♈
11	Su	♂ ♀ ☾ Sun. in Advent. ♀ ♀ ☾	7	6	4	54	9	22	7	30	♈	7	30	♈
12	M	Edwin Forrest died, 1872.	7	6	4	54	10	18	7	4	♈	7	4	♈
13	Tu	Mrs. U. S. Grant died at	7	6	4	54	11	14	7	36	♈	7	36	♈
14	W	Ember Day. [Wash., 1902.	7	6	4	54	morn		7	30	♈	7	30	♈
15	Th	Hartford convention, 1814.	7	6	4	54	0	8	7	45	♈	7	45	♈
16	Fr	Ember Day. ♀ ♀ ☾	7	7	4	53	1	0	7	27	♈	7	27	♈
17	Sa	Ember Day.	7	7	4	53	1	52	7	11	♈	7	11	♈
18	Su	4th Sunday in Advent.	7	7	4	53	2	48	7	57	♈	7	57	♈
19	M	Cudahy kidnapped, 1900.	7	7	4	53	3	45	7	45	♈	7	45	♈
20	Tu	So. Carolina seceded, 1860.	7	7	4	53	4	42	7	35	♈	7	35	♈
21	W	St. Thomas.	7	7	4	53	5	39	7	29	♈	7	29	♈
22	Th	♂ enters ♀. Winter begins	7	7	4	53	rises.		7	23	♈	7	23	♈
23	Fr	Hen. W. Grady died, 1889.	7	7	4	53	6	13	7	16	♈	7	16	♈
24	Sa	Clarence King, geologist.	7	7	4	53	7	15	7	10	♈	7	10	♈
25	Su	Christmas Day. [died, 1902	7	7	4	53	8	18	7	2	♈	7	2	♈
26	M	Battle of Trenton, 1776.	7	7	4	53	9	23	7	17	♈	7	17	♈
27	Tu	St John, Evangelist.	7	7	4	53	10	31	7	12	♈	7	12	♈
28	W	Mexauey died, 1869.	7	7	4	53	11	36	7	4	♈	7	4	♈
29	Th	Texas a State, 1845.	7	7	4	53	morn		7	50	♈	7	50	♈
30	Fr	♂ ♀ ☾	7	6	4	54	0	37	7	41	♈	7	41	♈
31	Sa	♂ ♀ ☾ Inferior.	7	6	4	54	1	42	7	33	♈	7	33	♈

Lombard Iron Works and Supply Co.

AUGUSTA, GEORGIA.

Foundry, Machine and Boiler Works and Machinery Supply Store.

Builders and Dealers in

Engines, Boilers, Steel Bridges, Roofs, Tanks, Towers and Building Construction.

Cotton, Saw, Grist, Oil, Fertilizer, Gin, Press, Cane and Shingle Mill Outfits and Repairs.

Building, Bridge, Factory, Furnace, and Railroad Castings.

Railroad, Mill, Machinists' and Factory Supplies.

Belting, Packing, Injectors, Fittings, Saws, Files, Ollers, Etc.

Shafting, Pulleys, Hangers, and Boxes, Mill Supplies and Tools.

CAST EVERY DAY. CAPACITY FOR 300 HANDS.

Atlas and Erie Engines.

Ashworth Cards, Korting and Leader Injectors.

Turbine Water Wheels, Etc.

PHYSICIANS' SPECIALTIES OR FOR HOME USE

EREUTHAIMA

A Peerless Tonic—Alterative, Non-Irritant. Can be given where Iodide Potash and Cod Liver Oil can not be tolerated. In use by leading Augusta physicians.

Component Parts—1 pint Elixir contains 32 grs. Calc. Iod., Calc. Brom. 1 pint Elixir contains 300 grs. Soda Hypophos., Pot. Hypophos., Mang. Ti Hypophos., Strych. Hypophos., Iron Hypophos.

Alterative Parts—Soda Iod., F. E. Hydras., E. E. Sarsa., F. E. Stillin. For all low anaemic conditions of the blood nothing is equal to this preparation. Absolutely nothing equals it after Grippe. \$1.00 BOTTLE.

**AUGUSTA DRUG CO., or
N. L. WILLET DRUG CO., AUGUSTA, GEORGIA.**

LAND'S SYRUP HYPOPHOSPHITES COMPOUND

Used for years by Augusta Hospitals; used and commended by such Augusta physicians as W. H. Doughty, Jr., M. D.; J. M. Hull, M. D.; Geo. A. Wilcox, M. D.; J. B. Morgan, M. D.; E. C. Goodrich, M. D., and many others. This preparation has in one dram the same amount of Hypophosphites as one full ounce of any other Syrup Hypophosphites on the market.

Formula—1 fluid dram contains 2 grains Hypo. Calcium, 1 gr. Hypo. Sodium, 1 gr. Hypo. Potassium, 1-4 gr. Hypo. Iron, 1-4 gr. Hypo. Manganese, 1-4 gr. Hypo. Quinine, 1-2 minim Fl. Ex. Nux. Vom. \$1.00 BOTTLE.

**AUGUSTA DRUG CO., or
N. L. WILLET DRUG CO., AUGUSTA, GEORGIA.**

"A. P. K."
Animal Parasite Killer

—
**Destroyer of all Parasite,
Insect, Vermin Pests. . .**
—

**KILLS Fleas, Lice, Mites, on Dogs, Cats,
Humans and Hens.**
—

KILLS Ticks and Screw Worms.
—

KILLS Cockroaches, Bedbugs and Ants.
—

**KILLS Plant Lice and Plant Bugs and Plant
Fungi.**
—

KILLS the Microbes of Itch, Mange and Scab.
—

Not Poisonous. Does not Hurt Eyes.
—

**NOTE—"A. P. K." leaves the skin of the animal soft and
odorless; and leaves his hair pliable and silky. The most
useful remedy on the farm.**

**Get full circulars and directions. Mix 1 part A. P. K.
to 50 to 100 parts water.**
—

PRICE—Pint 30c, quart 50c, gallon \$1.25, barrel \$1.00 gal.

N. L. WILLET DRUG CO.

AUGUSTA, GA. Sole Agents.

Neal's Carriage Paint

"THE OLD ORIGINAL"

ONE COAT WILL MAKE AN
OLD CARRIAGE LOOK LIKE
NEW.

May be used for painting bug-
gies, Carts, Sleighs, Boats, Iron
Fences, Settees, Lawn and
and Poreh Chairs, or anything
indoors or outdoors that needs
a durable varnish gloss finish.
Anyone can apply it.



BARKER'S NERVE AND BONE LINIMENT

For man or beast. Cures Rheuma-
tism, Sprains, Cuts, Bruises, etc.
The wonderful curative properties of
this Liniment cannot be excelled. The
proprietors have thousands of testimo-
nials as they have also for their pow-
der.

BARKER'S
Horse, Cattle and Poultry
POWDER

Cannot be excelled as a cure for all ani-
mal diseases. TRY THEM.

Buttermilk Toilet Soap



Has Stood the
Test for 13
years.

Always the best
for

**COMPLEXION,
TOILET and BATH**

IMPURE MILK

Has caused many deaths among babies. A large proportion of the supply of milk has, after analysis, been condemned as dirty, un-healthy and unfit for use. Injurious to grown people of strong constitution who can take measures to save themselves from its ill effects, it is often fatal to infants, unable as they are to express themselves, helpless and suffering on account of their physical weakness and the inability of their delicate organisms either to rid themselves of these impurities, or to withstand their bad effects.

The greater percentage of children's deaths occur under the age of five years; among these the larger number are under three years of age, an age at which milk is a necessity for a child's sustenance, and when its good or bad health depends upon the quality of milk it is required to digest. To aid babies in successfully ridding themselves of these impurities and to come successfully through the attacks of colic, cholera infantum and other diseases incident to infancy, a remedy is required which shall be mild enough not to injure it, yet which will bring quick and effective relief. A medicine of this kind should not only do away with the impurities themselves, but with the sickness they have produced and should restore the child to its normal state of health and happiness. Only by constant test can one know a sure cure for a baby's troubles, but a remedy which is an experienced physician's own compound, and which has been used and endorsed by several generations of mothers can surely be known to have stood the test of time, and such an one is found in Pitt's Carminative.

FOR SALE BY ALL DRUGGISTS

LAMAR & RANKIN DRUG COMPANY,

26 Central Avenue, Atlanta, Georgia.

PROPRIETARY PREPARATIONS

MANUFACTURED BY

AUGUSTA DRUG CO., INC. AND N. L. WILLET DRUG CO.,
AUGUSTA, GEORGIA.

Boracine Babies' Powder for Prickly Heat, postpaid	\$ 25	Sun Sanitary Fluid, pt. 20c.; qt. 35c.; 1 gal. \$1.00; bulk 75c. gal.	
Dr. Gilder's Liver Pills, postpaid	25	Certain Itching Pile Remedy	25
Land's Blood Syrup, (the strongest blood medicine known.) Bottle	1 00	Fisher's Worm Candy, postpaid . .	13
Land's Syrup Hypophosphite (best formula known)	1 00	Rose Cream (cures chapped hands, makes skin soft)	25
Holleyman's Elixir for Horse Colic (a positive specific in all cases)	50	Drake's Magic Liniment	50
Howard's Horse and Cattle Powders (full pound packages, 25c.) postpaid	35	Howard's Hair Dye, postpaid	25
Wild Cherry Cough Cure (best on earth)	25	Infallible Itch Ointment (it cures Itch) 25c.; postpaid	30
Anti-Shake Chill and Fever Cure (guaranteed to cure chills. If it fails we refund you)	50	Infallible Tetter Ointment (it cures Tetter and Eczema), 25 cents; postpaid	30
Land's Headache Capsules (12 capsules in each box) per box, postpaid	25	Hunter's Specific (a sure old English remedy for Gonorrhoea, take internal)	50
Howard & Willet's Diarrhoea Cordial	25	Infallible Pile Ointment, postpaid	50
Y. K. W., with Syringe (external for Gonorrhoea)	50	Land's Kidney Cure (none better)	1 00
Lee's Chill Cure	25	Howard & Willet's Carbolic Salve, for old sores; postpaid	25
North's Asthma Cure (an effective remedy)	25	H. & W's. Essence Jamaica Ginger	25
Ereuthaima, (meaning "good blood.") Alterative and tonic; largely used by Augusta doctors, does not disturb even delicate digestion	1 00	Georgia Chicken Cholera Cure, 25c.; postpaid	30
Paxton Rheumatic Remedy	75	National Hog Cholera Cure, 25c.; postpaid	30
H. H. P., a Liver Medicine (dry) postpaid	25	Howard & Willet's Toothache Drops 10c.; postpaid	12
H. H. P., best liquid Liver Medicine known	50	Rats Death (sure poison) 10c.; postpaid	12
Willet's Wine Cod Liver Oil; tasteless	1 00	Eagle Baking Powder, high grade, pound	25
		Animal Parasite Killer, pt. 30c.; qt. 50c.; gallon \$1.25; bbl. \$1.00 a gallon.	
		Rex Brand Cotton Marking & Branding Ink—Indelible. Black, Green, Blue, Violet, Crimson, pkg. for 50 gals. ink \$2.50; pkg. for 25 gals. \$1.50; 10 gals. 75c.; all colors same price.	

When the Eyes are Sick

Something must be done and done quickly. Little neglects bring big diseases. When the eyes are sore or inflamed use

John R. Dickey's Old Reliable Eye Water.

It stops the inflammation, cures granulated lids, and brings ease at once. IT CAUSES ABSOLUTELY NO PAIN. The genuine is always enclosed in a RED folding box. Sold by all Drug and General Stores—25c.

—MANUFACTURED BY—

DICKEY DRUG COMPANY,
BRISTOL, TENN.