

## **Historic, Archive Document**

Do not assume content reflects current scientific knowledge, policies, or practices.



# PARK'S FLORAL GUIDE

1917

Issued Annually by GEO. W. PARK, LaPark, Pa.

## Park's Flower Seeds.

AT UNIFORM PRICES.

FOR MANY years Park's Flower Seeds have been known as the best to be obtained, either in quality or vitality. There are none better. And yet, the prices are uniform, and within the reach of all who cultivate flowers, notwithstanding the increased business expenses.

### PLEASE NOTE THESE TERMS:

1 Packet	.05	17 Packets	.75	48 Packets	\$2.00
5 Packets	.25	23 Packets	\$1.00	61 Packets	\$2.50
11 Packets	.50	35 Packets	\$1.50	75 Packets	\$3.00



PARK'S FLORAL MAGAZINE, a charming floral monthly devoted entirely to flowers, is included for a year with every order of five or more packets of seeds. If already a subscriber two extra packets, my selection, choice kinds, will be sent instead of the Magazine. A very few packets are quoted at 10 cents, and if any of these are wanted count each as two packets. Thus, for 25 cents you will get three 5-cent packets and one 10-cent packet instead of five 5-cent packets. All seeds are in 5-cent packets, unless noted.

My Friends, you can depend upon the seeds I sell. To insure vitality a few seeds of every lot offered are tested, and if not satisfactory are condemned. The quality is insured by obtaining from special growers. My best wishes for success go with every packet, and I accompany it with cultural directions; and in my Magazine I give special hints upon any floral topic. Floriculture has been my life-work, and the information imparted is practical and reliable. You are thus assured of success if you buy of me. I pack carefully and deliver promptly by parcel post or express. I insure safe arrival; I correct all errors; I give you prompt service. My seed-house is thus brought to your door, and you will receive the same attention as though at my place in person. I aim to give every patron a square deal, and will do even more than justice and fair dealing demand in order to please my friends.

And now I await your order, large or small, and thank you in advance for it. Will you not kindly get a club for seeds and Magazine? I shall much appreciate a club order. Send for agent's outfit. Florally,

**GEO. W. PARK, Seedsman, Florist and Publisher,**  
LaPark, Lancaster Co., Penna.

**HOW TO REMIT.**—Sums of \$1.00 or more remit by draft, money order or registered letter. Smaller sums in silver coin in a coin card or sewed in split pasteboard; or in 1-cent or 2-cent postage stamps. Always send enough money to pay for the seeds ordered. I guarantee the safe arrival of both money and seeds.

# Park's Flower Seeds Always Reliable.

You can always depend upon the seeds I sell. All are of the best quality, and their vitality is assured by a careful test of all varieties. This year a lot of old and worthless seeds will be sold because of the scarcity. Be sure you get tested seeds of known quality. A word to the wise is sufficient.

**Asparagus.**—Mr. Park: Some time ago I got a packet of your Asparagus Sprengeri and planted it in a box, and every seed grew and made a plant. So I have had plants to exchange and give away, and sell, and have some left. They are elegant window plants.—Mrs. B. Jewell, Randall, Wis., Nov. 26, 1916. See page 29.

**Antirrhinum.**—Mr. Park: Your Orchid-flowering Snapdragon (Antirrhinum) were the finest flowers I ever saw. Everybody who went by had to stop to admire them. Some of the plants were over three feet across, and just full of flowers. The bed showed all the colors of the rainbow.—Inez Purtteman, Chelrn, Wash., Oct. 22, 1916. See page 4.

Mr. Park: Your Orchid-flowering Antirrhinum or Snapdragon did exceedingly well. They are easily grown, begin to bloom early, and remain in bloom until the snow falls. There is such a variety of colors and shades, and many are handsomely variegated. The plants will live over winter and bloom another season, or they may be cut back, potted, and placed in the window to bloom over winter. I was much pleased with them.—Mrs. Emma Perry, Newport, Ky., Nov. 13, 1916.

**Aquilegia.**—Mr. Park: The first flowers to greet us last spring were of Aquilegia or Columbine, and what lovely, graceful flowers they were! The colors were yellow, white, sky blue, purple, lavender and red. Some plants were two feet or more tall, and were handsome clumps. I want a large bed of these flowers another summer.—Mrs. H. F. Bohn, Exira, Iowa, Nov. 27, 1916. See page 27.

**Calendula.**—Mr. Park: Calendula is a very deserving hardy annual, easily grown. Those I got from you bloomed through the summer, and were a rival of the Chrysanthemum after frost destroyed most of the garden flowers.—Stella G. Weber, East Earl, Pa., Nov. 10, 1916. p.9.

**Canna.**—Mr. Park: I raised some fine Cannas from your mixed seeds. They were the admiration of all who saw them. A single blossom of a bright red color measured four inches across, while a yellow spotted one measured six inches. They were beautiful.—M. Crum, Moorewood, Okla., Nov. 14, 1916. See page 9.

**Canterbury Bells.**—Mr. Park: I have never seen the equal of your Canterbury Bells in size, fullness and color. The flowers are both single and double, and I also had some of the cup and saucer class. I shall grow them again.—Ella M. Bufun, Lackawana, N.Y., Dec. 6, 1916. p.27.

**Dianthus.**—Mr. Park: I wish your patrons could have seen the bed of Dianthus I raised from a packet of your mixed seeds. I started the seeds in a window box and set the plants out. They grew and blossomed with but little care. How beautiful were the flowers, in such a variety of colors and variegations. I cover my bed with leaves during the winter, and the plants bloom well the second year.—Naomi Ingalls, Belmont, Va., Nov. 10, 1916. See page 12.

Note.—The Japan Pinks are bright and beautiful, easily grown, bloom freely the first year, and last until winter. The flowers are single and double, of many rich colors and markings, showy in the garden and fine for cutting. Try them.

**Dahlias.**—Mr. Park: Some of the prettiest Dahlias I ever saw were raised from seeds. They are easily grown and bloom the first season.—Mrs. O. J. Johnson, Clark Co., Ky., Nov. 13, 1916. See page 12.

**Digitalis.**—Mr. Park: Digitalis is a very satisfactory perennial. Its tall spikes of beautiful tinted bells make a garden very attractive. It is showy, reseeds, and is no trouble.—A. G. Clark, Clarkton, Va., Dec. 10, 1916. Page 27.

**Eschscholtzia.**—Mr. Park: Eschscholtzia or California Poppy was indeed a joyful surprise to me. All of my friends admired the blooming plants and asked me what they were. They were a complete mass of foliage and golden bloom, the leaves being almost as handsome as the flowers. They make a beautiful bed or border, and are so easy to raise.—Mrs. Emma Perry, Newport, Ky., Nov. 13, 1916. See page 13.

**Hibiscus.**—Mr. Park: The Marsh Mallow Hibiscus is one of the easiest to grow of herbaceous perennials, and one of the most showy and beautiful. It likes a wet place, but will grow and bloom in the garden. The flowers are large, and produced throughout summer, colors from white to deep crimson. My seedlings were ready to transplant in 28 days after the seeds were sown.—Erlitz Gardner, West Haven, Conn., Nov. 8, 1916. See page 14.

**Impatiens.**—Mr. Park:—Those who do not know Impatiens Sultana have missed a treat. It is a persistent bloomer—blooming all winter in sunshine or shade, and in summer in pots upon the porch, or bedded out. The plants are as easily grown as those of the Touch-me-not or Balsam that mother used to grow in her flower garden.—C. M. Moser, Wayne Co., Miss., Nov. 20, 1916. Page 30.

**Kenilworth Ivy.**—Mr. Park: Your seeds of Kenilworth Ivy came up in a trimble, and grew so vigorously that a single plant completely filled a 7-inch brass basket, and bloomed continuously, the envy of all.—Mrs. L. T. Gage, Topeka, Kan., Nov. 21, 1916. See page 14.

**Ornamental Grasses.**—Mr. Park:—For groups on the lawns or in borders and large beds, nothing gives a finer effect than Ornamental Grasses, and they are easily grown from seeds.—Mrs. Treadwell, Sheb. Co., Wis., Nov. 28, 1916. See page 24.

**Pansy.**—Mr. Park: Two years ago I purchased a packet of your Large-flowered Pansy seeds. The plants bloomed the same season, and were simply grand. They all wintered nicely without any protection, and this summer they were the finest in the city. I counted one hundred and fifty blooms at one time on the snow-white plant. Many of them were one and a half inches across. Even now I have Pansy blooms, although it has been freezing every night for two weeks. Try them.—D. H. Snowberger Fayette Idaho Nov. 11, 1916. See page 18.

**Petunias and Phlox.**—Mr. Park: My Phloxes and Petunias came up this spring from self-sown seeds, and the ground was soon covered with little plants. I weeded them and stirred the soil as well as I could between the plants, and my! how they grew! The Petunias were a solid mass of flowers all summer. The Phloxes went to seed, as I did not keep the flowers picked off, so I broke the tops off, and in a short time they were all grown out, and covered with flowers until freezing weather. They both make a grand showing, with little or no care.—Anna W. Pratt, Watonwan Co., Minn., Nov. 17, 1916. See page 19.

**Poppy.**—Mr. Park: I bought a packet of Perennial Poppy seeds from you last year. They grew rapidly and attracted the attention of every one who saw them. They bloomed this year, and the flowers were 18 inches in circumference, each one lasting a week. They are beautiful while in bud, and increase in beauty as they develop, until the bed is magnificent, the rich crimson contrasting well with the green foliage.—Mrs. L. C. Robinette, Uhrichville, O., Nov. 27, 1916. See page 28.

**Primula Chinensis.**—Mr. Park:—Those who want a few blooming plants in the window during winter should get a packet of your Primula Chinensis. They are easily grown from seeds, and will give a wealth of bloom in a rather cool but frostless room.—Mrs. Wm. Orchard, Pacific Grove, Calif., Nov. 21, 1916. See page 30.

**Sweet Williams.**—Mr. Park: I would not be without Sweet Williams. I start plants every year, and thus I always have a bed of them. They are showy, of rich varied colors, very fragrant, and can be relied upon for a brilliant display.—S. T. Hinrickson Springfield, Ill., Nov. 10, 1916. See page 29.

**Verbena.**—Mr. Park: My Verbenas were a mass of blossoms all summer long. While the drought ruined many other flowers, it never affected my Verbenas. They endure light frosts and keep on blooming. They are very fragrant.—A. G. Tombleson, Wis., Nov. 11, 1916. Page 23.



**Park's Floral Guide for 1916.**—This Guide contains a pronouncing and germinating table, and descriptions and illustrations of almost every flower. I have a few copies left and will mail a copy to any person who applies. When you order seeds, however, use the Guide for 1917. GEO. W. PARK, LaPark, Pa.

# Some Good Things Specially Recommended.

## Hibiscus Meehan's Hybrids.

These Hybrids are beautiful. The plants grow very feet high, stool out, forming massive clumps; every stalk bears freely immense, Hollyhock-like flowers, ranging from white to deep crimson, the display lasting throughout the season. The plants are perfectly hardy, and can be depended upon to bloom freely for several months every year. I take pleasure in urging my friends to get this splendid herbaceous perennial, for I know those who get it will be delighted, and feel thankful that their attention was called to its superior merits. Started early the plants bloom the first summer. Finest mixed colors, 5 cents. Give them a trial.



## Nelumbium Spelosum.

This is the Egyptian Lotus, the most beautiful and desirable of hardy water plants, and the most easily grown. The enormous bluish-green leaves held well above the water, and the magnificent flowers from eight inches to a foot across, pink shading to canary at the base, held aloft on strong stems, calls forth the praise of all who pass. The flowers,

too, are excellent for cutting. I can supply fresh seeds at 5 cents per packet, and dormant tubers (during May at \$1.00 each. Order promptly. Cultural directions sent with both seeds and tubers.



## The Late Branching Aster.

This race of Double Asters is a general favorite, and if you cultivate but one kind of Aster you should select the Late Branching in mixed colors. The plants grow upwards of 2 feet high, branch, somewhat in tree form, and each branch has several large double flowers, exquisitely formed, and of the richest colors, some charmingly variegated. The plants should be set eight inches apart in the bed, which should be deep, rich, and in a sunny situation. I offer the finest colors, either separately or in mixture, at 5 cents per pkt, 1/4 oz 40 cents. This is the popular market sort, and I have seeds of the best quality and vitality for that purpose. See p. 5.



## Antigonon leptopus.

This is the Mountain Rose vine, easily grown from seeds, and exceedingly beautiful. It will grow 30 feet high, the leaves graceful, bronze-green and very attractive. The flowers are in big, curious panicles in great profusion, and are of a brilliant, pleasing carmine-rose, appearing as gems in a setting of bronzy-green. The roots are hard tubers, readily kept over winter in a frost-proof cellar, and started again early in spring, per pkt 5 cents. I wish everyone of my friends would try this splendid vine. It deserves highest praise.



## Choice Seeds Omitted from Body of List.

**Adocia**, splendid Pot Shrubs, pretty foliage and golden flowers. Armata, Dealbata, Lophantha, sep or mixed.

**Agrostemma** Cœli-rosa, new Dwarf, blotched and striped, beautiful in masses. Pretty garden annual, mx'd.

**Antennaria** Margaritacea, a hardy perennial everlasting, 2 feet high, flowers white in large clusters, dye well.

**Asalia** Sieboldii and Moseri, both elegant pot plants. Large tropical foliage, beautiful, easily grown, mixed.

**Arundo** phragmites, hardy Marsh Reed, six feet high, with large, handsome purplish panicles of bloom.

**Basil**, Dwarf, Purple, a compact, bushy herb with fine purple foliage, very desirable for pots.

**Bean**, Florida Horse. Vigorous, big showy flowers, huge, heavy pods a foot long, great scarlet seeds.

**Bean**, Florida Velvet. Robust vine, flowers and pods showy. Fine for shade, and to hide unsightly objects.

**Blumenbachia** insignis, a pretty, hardy annual trailer from Chili, white, red, yellow, an inch across.

**Borecole**, Coleus Excelsior, a beautiful variegated-leaved sort, showy in beds, lovely green and white.

**Bosea** Yervamora, a fine pot plant, with dense trusses of small red berries, rare and handsome.

**Byronia** dioica a pretty perennial gourd-vine with scarlet fruits, fine for basket or trellis.

**Euphatorium** cordifolium, hardy perennial, 8 feet high, with handsome golden flowers in autumn, showy.

**Cajanus** Indicus, Pigeon Pea. 8 ft high, Pea-like, red-spotted flowers in racemes. Pretty pinnate foliage.

**Catananche** cœrulea, a fine hardy garden perennial, two feet high, with pretty, showy blue flowers.

**Caterpillars** and Snails, seed-pods like striped or hairy caterpillars and snails, garden annuals, odd, mixed.

**Celosia**, Feathered Dwarf, a new race of C. pyramidalis, dwarf, with large feathery panicles of bloom, mixed.

**Chelone** glabra compacta, mixed. A new French Chelone, allied to Pentstemon. Dwarf, free-blooming, mixed.

**Dioclea** Glycinoides, a pretty pot-trellis vine for the window large racemes of showy red flowers.

**Escallonia** floribunda, a pot shrub, bearing large, loose white clusters of beautiful bloom. Hardy south.

**Gypsophylla** Rokejeka, a tall strong-growing perennial, bearing delicate rosy pink flowers, fine for bouquets.

**Helentium** autumnale superbum, 6 ft, golden bloom. H. Bigelowi, hardy perennial, beautiful golden flowers with black center, fine for cutting, new. H. Riverton Beauty, flowers rich lemon with large black zone, very striking, fine for cutting. Give them a trial.

**Helopsis** Picheviana, the small perennial "Orange Sunflower", 4 ft high, golden bloom, very desirable.

**Hibiscus** palustris, a splendid perennial, 2 feet high, with large, showy flowers, white with purple eye.

**Itisanthus** Russelianus, a very beautiful new Texas flower, 2 ft high, flowers large, cup-like, very attractive.

**Lunaria**, Large-flowered purple, new, French Improved Honesty, blooming early, showy, hardy, very fine.

**Melia** Azedarach, fine pot plant with panicles of pretty, fragrant lilac flowers.

**Senecio** Clivorum, new Chinese perennial with shining green leaves and golden brown-centered flowers.

**Starchytarpheta** mutabilis, magnificent pot plant. Bears long spikes of crimson flowers changing to rose.

**Sunflower** Maximilianus, hardy, late-flowering, ten feet high, bearing an abundance of showy golden flowers.

**Symphyantra** Hoffmanni, large, tree-like plant two feet high, white bells in profusion, Bellflower.

**Teuerium** Chamædrys, 8 inches high, shining leaves, purple flowers. Thrives on walls, rocks, and as an edging.

**Tithonia** speciosa, six feet, annual, large orange-red flowers, free-blooming, new, showy.

**Valeriana** congesta, a pretty little annual of easy culture, with charming rose flowers in clusters.

## Park's Floral Magazine

A Charming Floral Monthly.

This is the oldest and most popular periodical of its class in the world. It is neatly printed, freely illustrated, original, and devoted entirely to the interests of amateur florists. It keeps you posted upon new flowers and plants, improved methods of culture, how to get rid of insects and diseases, and answers your enquiries. It is a treasury of floral information, and the index makes each volume a valuable work of reference. Advertisements are not sandwiched between reading, and can be removed in binding. Are you a subscriber? If not, send 10 cts. for a years subscription at once, or 15 cts. for the Magazine a year and 8 splendid mixed Gladiolus. I want a club in every community. Send for my liberal terms, free. You can earn all of your seeds and bulbs by a little effort in getting up a club. Write today. Address GEO. W. PARK, B. Sc., Ed. and Pub., LaPark, Lanc. Co., Pa.

## Some Floral Notes.

Before ordering please read over these notes. I recommend only what I feel will please and satisfy my friends.

**Ageratum.** The new Mauve Beauty has large mauve flowers in large clusters, and the plants are compact and very free-blooming. See page 3.

**Amaranthus Tampa** grows 4 ft. high, with bronzy leaves and immense plumey drooping panicles at the top. Makes a gorgeous group, and blooms all summer.

**Antirrhinum.** Semi-dwarf. I have secured these new Snapdragon in England. I believe they will be more than satisfactory to all who try them: Electra, Golden Beauty, Captivation, Pink Gem, Pink and Terra-cotta shades. See page 4. Intermediate varieties. These are all of compact habit, the flowers very large, on long spikes, and of new, novel colors. They are ideal for beds or pots. Try them.

**Aster.** Branching, Improved. I ask special attention to this fine strain of Asters. The plants are vigorous, branching freely, and bear their flowers upon long, strong stems, very showy in a bed, fine for cutting, see page 5. Vick's Branching White, imported from England, is said to be a greatly improved strain.

**Balsam.** Double, new French sorts. Among omitted seeds are two new French varieties of Double Balsam—Fiery Red and Satin Chamois. These are rare and beautiful colors and the flowers are particularly large and as double as a Camellia. I supply them separately or mixed.

**Calendula.** Large-flowered, Double. This is a grand annual, either for summer and autumn beds, or for pots in a cool window in winter. The flowers are large, rich in color, and of the easiest culture. It does not mind heat or frost, always in bloom. Lemon, Red, Striped, mixed.

**Canterbury Bells.** Dean's Improved Hybrids, are from England, and considered far superior to the German Canterbury Bells. I believe they will be found all that is claimed for them. See page 21.

**Chrysanthemum.** New Dwarf Golden Gem. I wish my friends would try this new Annual Chrysanthemum of the coronarium class. It grows dwarf and bushy, and becomes a globe of rich golden double flowers, splendid for either pots or beds, 25 seeds 5 cts. It was omitted in making up the body of the Guide. I also recommend Double Fringed, which comes in mixed colors. See page 11.

**Cosmos.** New Giant-flowered. This is a race of early-flowering, giant-flowering sorts, with colors from white to crimson, borne in great masses on plants 4 ft. high. New Blush Queen, is a fine variety, the color deepening toward the center, mixed colors, see page 11. I also have the new Double Cosmos in mixed colors, 5 cts.

**Daisy.** Monstrous Double. These Double English Daisies are of monstrous size, very double and showy. The plants grow in tufts, and become a mass of big attractive bloom. I have white, rose and red, in colors or mixed. For early and late bloom they rival the Pansy, and are equally as showy. Be sure to get a packet. See Bellis p. 8.

**Erysimum Dwarf Compact.** Golden Gem, sown in September it makes a glorious bed of gold in the spring, sown in spring blooms in fall. Much like Wallflower, p. 12.

**Eschscholtzia.** New Compact, mixed. This was omitted in the Guide. The plants grow erect, bloom very profusely, make a fine edging or border. Finest mixed colors 5c

**Frankenia** ericifolia, a fine basket plant, also fine for bracket pots. Flowers pink, abundantly produced.

**Godetia.** New Compact, mixed. This also was omitted. The plants are low, bushy and covered with large, showy flowers. Mixed colors. See page 13.

**Gossypium.** Cotton, Upland and common sorts, fine ornamental plants, a curiosity north. Blooms first season.

**Heliopsis** Pitcheriana, a showy, hardy perennial 3 ft. high, bearing large, handsome, golden flowers all autumn.

**Larkspur.** Giant Hyacinth-flowered. Sown early this makes a wonderfully attractive bed, may also be sown in autumn to bloom the following spring. Flowers are double of a great variety of rich colors, very bushy. Mixed colors.

**Lupinus** Douglass, new, not listed. This is a cross between Annual and Perennial Lupinus, and bears showy blue and purple flowers in spikes fully a foot long. Sow early. A novelty of great value.

**Marigold.** French Dwarf, from selected plants, finest mixed. Very double, beautiful flowers of many colors and variegations. Imported from England.

**Melothrina** punctata, gourd-climber for a pot trellis.

**Pansy.** Ne-plus-ultra, see page 18. This is decidedly the finest strain of Pansies to date. It far surpasses Rømer's in vigor and free-blooming, and in the huge size and rich colors and variegations of the flowers. A bed of these Pansies makes a gorgeous early spring display when the plants are started in August, and a fine autumn display if started in spring. Do not omit seeds of this grand strain of Pansies when you order. Try them.

**Pansy.** Tufted. These are varieties of Viola Cornuti, not as large as Pansies, of more graceful shape, and more freely produced. They bear sun well, and are good for beds. There are many colors and variegations, see p. 23.

**Poppy.** If you want a glorious bed of rich-colored bloom sow seeds of Double Umbrosium Poppy. The plants grow a foot high, stool out, and make a waving mass of the most attractive red color imaginable. I can also supply the elegant single variety. These Poppies are grand to mingle in a grass patch or in nooks about the lawn. They take care of themselves when once started, but do not become troublesome. See page 20.

**Stokesia** Hybrida, elegant new varieties of this fine hardy perennial. Once started the plants will live and bloom for years. Add this to your order.

**Sunflower.** New Red. I offer seeds of a selected strain of the New Red Sunflower. The plants grow eight feet high, branch, and bear very large, handsome flowers, variously marked from light red to deep red. They are as easily grown as the common Sunflower, and make a fine show. Give them a trial. See page 14.

**Wallflower** Kewensis, a fine Wallflower for blooming in pots in winter. Flowers large, freely produced, fragrant.

**Wool Flower.** The so-called Wool Flower is a sort of Celosia. It is an attractive annual for either beds or pots. I offer first-class fresh seeds, 5 cents per packet.



## Choice Seeds of Tropical Fruits.

The following Tropical Fruits are readily grown from seeds. Plant out at the south, but grow in pots at the north. They grow, bloom and bear well in pots.

**Anona squamosa,** Sweet Sap Sugar Apple, fragrant, edible, rough-skinned.

**Arbutus** Unedo, 6 feet, Strawberry Tree, big, scarlet, edible, nearly hardy.

**Carica** Papaya, the tropical Paw-paw. Large handsome fruit of easy culture, blooms and bears 2nd year.

**Citrus Japonica,** Kumquat, small, golden fruit in abundance, edible, evergreen, very ornamental.

**Citrus Nobilis,** Mandarin, small Orange, scarlet, sweet, very productive.

**Diospyrus Kaki,** Japan Persimmon, large, delicious, almost hardy.

**Eriobotrya Japonica,** Japanese Medlar, prized as fruit by some people. Fruit fine for pies or stewing, has a sub-acid taste much like our cherry.

**Ficus** Carica, Fig, choice, mixed.

**Opuntia** or Prickly Pear, prolific-bearing Cactus, fruits edible, purple, plants curious, flowers very handsome

**Passiflora** Edulis, a Passion vine, beautiful bluish flower, purple fruits.

**Physalis** Edulis, easily grown, from South America, 3 ft. high, bears yellow, cherry-like fruits enclosed in a pale, inflated capsule, prolific, flavor

prized by many. Used as dessert and preserves. Known as Cape Gooseberry.

**Psidium** Guava, large-fruited, is prized for jelly, and for eating.

**Psidium** Cattleianum, a smaller fruit in clusters, fine dwarf shrub.

**Punica** granatum, the Pomegranate, very pretty in flower, fine fruit.

**Sunberry** or Wonderberry, a variety of Solanum Nigrum, bearing large black berries in abundant clusters. Used for pies, preserves, etc.

**Surinam Cherry,** from Japan, evergreen pot plant, scarlet fruit.

## Popular Mixtures of Flower Seeds.

**Mixture of Annuals.**—Contains chiefly seeds of flowers blooming the first season, embraces over 100 genera, represents 50 kinds, Price 10c.

**Mixture of Biennials and Perennials.**—Contains seeds of 125 species and varieties. Price 10 cents.

**Mixture for Window Garden.**—Contains seeds of about 125 varieties of window plants. Price 10 cents.

**Mixture of Climbers.**—Contains

seeds of a dozen different genera, about 50 varieties. Price 10 cents.

**Mixture of Everlastings and Grasses.**—Leading sorts for drying for winter bouquets. Price 10 cents.

**Mixture of Fragrant Flowers.**—Contains 50 kinds of our most fragrant flowers. Price 10 cents.

**Mixture of Edging Plants.**—Contains seeds of about 50 or more species and varieties. Price 10 cents.

**Mixture of White Flowers.**—Excellent for a moonlight display. Also suitable for graves. Price 10c.

**Mixture of Shrubs and Trees.**—Embraces a hundred of the best varieties. All hardy and useful for ornament and shade. Price 10 cents.

**Park's Surprise Mixture.**—Contains seeds of 1000 varieties, old and new. Very interesting. Price 10 cts.

Three packets, any mixture, 25 cents.

# Park's Choice Flower Seeds for 1917

## GENERAL LIST OF THE FINEST VARIETIES

**M**Y FRIENDS, on account of the European War it is impossible for me to obtain seeds from my German growers, and so I have to somewhat abbreviate this list, as I have in past years been importing seeds from Germany that can be obtained in no other country. You who have been dealing with me, however, know that what I offer is first class, and my terms this year are even better than last, although there has been an increase in business expenses. Terms:

1 Packet (unless priced 10 cts.)	5 cts.	23 Packets (unless priced 10 cts.)	\$1.00
5 " " " " "	25 cts.	48 " " " " "	2.00
11 " " " " "	50 cts.	75 " " " " "	3.00

Packets priced at 10 cents count as two packets. A year's subscription to Park's Floral Magazine, a charming floral monthly, is included in all orders of 5 packets or more. Or, anyone ordering a 10-cent packet and adding 5 cents (15 cents in all) will get the Magazine for a year.

I want a big club from every community. Will you act for me? If so, I shall gladly send you a subscription outfit and liberal terms. Address

GEO. W. PARK, LaPark, Lancaster Co., Pa.

## Seedlings Blooming First Season.

### *Ageratum, Fine Large-flowered.*

A Showy and beautiful bedding and pot plant. Everblooming, Continuous-blooming, Free-blooming. The Dwarfs make a fine dense edging.



Here is one of the most showy and desirable of plants for general cultivation. Seedlings are easily started and begin to bloom in a few weeks, the plants increasing in size, becoming a globular mass of elegant blue, azure, white or pink clusters, as indicated in the engraving. They revel in hot sun, bear drouth well, and are splendid for beds or edgings in summer or pots in winter. The tall sorts grow three feet high, the dwarf ones from six inches to a foot.

#### Dwarf Varieties.

These grow from six inches to a foot high, and are more dense and profuse than the taller sorts. They are especially valuable for beds, borders, edgings and pots. My seeds of these are of the finest stains, and can be depended upon.

- Imperial Dwarf Blue**, a foot high, rich blue.
  - Imperial Dwarf White**, similar, but white.
  - Swanley Blue**, light blue, beautiful, large bloom.
  - Blue Perfection**, dwarf, lovely big blue flowers.
  - Little Dorrit**, dwarf, fine light yellow.
  - Princess Victoria Louise**, blue, white center.
  - Mauve Beauty**, new; compact, large mauve flowers; very free-flowering; fine for beds or edgings.
  - Little Blue Star**, miniature plant, compact, with small blue flowers; fine for edgings or rock-work.
  - Tom Thumb Red Pearl**, red flowers, very dwarf.
- Dwarf varieties carefully mixed.

**Tall Varieties.** These grow from two to three feet, and are fine among low shrubs or in mixture; the plants are loose and graceful, the clusters being borne on long stems. *Mexicana cœrulea*, blue; *Mexicana alba*, white; and *Mexicana lutea*, yellow. Tall varieties in mixture.

Complete special mixture of all the above, Dwarf and Tall, carefully prepared.

**Wendlandii**, French Dwarf, blue, white; separate or mixed per packet..... 10c.  
 (All varieties and mixtures named in this Guide are supplied in packets at 5 cts per packet, except the kinds quoted at 10 cents. These will count as two 5 cent packets. See terms above.)

Mr. Park:—Why is *Ageratum* not generally grown? It is one of the loveliest of blooming plants, and easily grown from seeds, easily transplanted, and becomes a mass of delicate blue feathery flowers, continuing until killed by frost. No flower gives greater returns for the trouble and expense.—Mrs. M. L. Duke, Prattville, Ala., Nov. 10, 1916.

**Abronia umbellata**, sand Verbena, showy, fragrant flowers in Verbena-like clusters. Likes sandy soil and hot sun.

**Adonis Æstivalis**, summer-blooming; Autumnalis, fall-blooming. Both bear fine-cut foliage and red cupped flowers. Separate or mixed.

**Ethionema Buxbaumii**, annual; pale lilac.

**Agrostemma cœli-rosa**, pretty annual a foot high; bloom in masses. White, purple, striped, mixed.

**Alonsoa grandiflora**, scarlet; *Miniata* compacta; *Mutisi* compacta, rosy chamois; *Myrtifolia*, scarlet; *Warszewiczii* compacta, fine for pots.

**Amaranthus**, foliage and flowering plants of easy culture, like a dry sunny bed. *Abyssinia*, *Amabilis* tricolor, *Bicolor Rubra*, Brilliant, *Oruentus*, *Hypocondriacus*, *Margarita*, *Monstrosum*, *Oriflamme*, *Quadricolor*, *Superbus*, *Tricolor Giganteum*, *Tricolor Monstrosum*, *Tricolor splendens* or *Joseph's Coat*. Separate or mixed.

# Antirrhinum, Improved, Fragrant.

Greatly Improved Snapdragons. Immense Spikes, Huge Flowers, Splendid New Colors. Excellent for Summer Beds and Winter Pots.



## INTERMEDIATE VARIETIES.

- Album**, long spikes, white flowers.
- Aurantiacum**, deep golden yellow.
- Aurora**, cinnabar scarlet, white throat.
- Brilliant** Rose, very bright rose.
- Black Prince**, nearly black, small foliage.
- Bonfire**, lovely orange and flame color; new.
- Buff Queen**, rose, canary center shaded orange.
- Captivation**, chamois, shaded pink; new, very pretty.
- Carminae**, bright carmine color; lovely.
- Chamois Prince**, golden chamois, fine.
- Crescia**, crimson-scarlet, showy.
- Crimson King**, dark crimson, large flower, beautiful.
- Cupreatum**, copper color; attractive.
- Dainty Queen**, salmon chamois, bright yellow lip; new.
- Defiance**, firey scarlet; new, fine.
- Electra**, salmon, maize and orange; long spikes, new.
- Firefly**, scarlet with white throat; splendid.
- Gloriosum**, carmine and white; fine.
- Golden Beauty**, rich golden yellow; new.
- Queen, large, golden flowers, very showy.
- Kermesina splendens**, crimson.
- Pink Gem**, clear rose pink, white throat.
- Picturatum**, blotched varieties.
- Rose Queen**, rosy pink, citron lip.
- Striata**, striped; very fine.
- Vermillion**, fine orange-scarlet.

Intermediate varieties in complete mixture.

The new sorts of Antirrhinum or Snapdragon are surpassingly beautiful and useful. They are classed in three races—Tall, Intermediate and Tom Thumb. The tall varieties grow three feet high and bear long spikes of bloom the entire summer. They are especially valuable for a screen or summer hedge, and for a background. The Intermediate are preferred for beds and borders, growing 18 inches high, and making a glorious display all summer. The Tom Thumb sorts grow six to ten inches high, and become globular masses of bloom. I have the finest large-flowered and new sorts, and those who sow my seeds will be highly pleased. The flowers are of the richest colors and variegations, and all are deliciously scented. Fine for cutting.

## TALL VARIETIES.

- Album rubro-striatum**, white striped red.
  - Brilliant**, scarlet, white and yellow variegated.
  - Rose, new, very bright and showy.
  - Chamois**, new, very handsome salmon.
  - Carmine King**, new bright carmine, white throat.
  - Crescia**, crimson scarlet, rich and showy.
  - Coral Red**, new and attractive color.
  - Delila**, Carmine, yellow and white.
  - Firefly**, scarlet and yellow, handsome.
  - Fire King**, scarlet with orange.
  - Galathe**, crimson with white throat.
  - Kermesina splendens**, brilliant crimson.
  - Luteum**, yellow, distinct variety.
  - rubro-striatum, yellow striped red.
  - Papilionaceus**, blood red, white throat, splendid.
  - Purple** and yellow, very pretty.
  - Queen Victoria**, very large, satiny white, fine.
  - Romeo**, deep rose, handsome.
  - Roseum**, pale rose, white throat.
  - Striatum**, finest striped varieties.
  - Venus**, new, pink on white ground.
  - Vienna**, new.
- Double-flowered White, also Double-flowered Yellow.

## Tom Thumb Varieties.

- Album**, white.
- Kermesinum**, crimson.
- Roseum striatum**.
- Sanguineum**, blood red.
- Sulphureum**, yellow.
- Tom Thumb sorts in mixt're

## New Fragrant Orchid-flowering.

This is a race of compact, semi-dwarf varieties embracing the lighter art shades, some handsomely blotched and marked, some lovely pink and blush, shading into orange and terra-cotta. This is the ne-plus-ultra of Snapdragons, and cannot be surpassed. It is sure to delight all who cultivate it. Price, 10 cents per packet.

Complete mixture of all the above fine Snapdragons, Tall, Intermediate and Dwarf.

Mr. Park:—The Orchid-flowering Snapdragons are such an improvement over the old varieties in coloring, strong growth and longer spikes, that they are among the most valuable flowers that can be readily grown from seeds. Seeds sown the first of April will bloom early in July, until late fall.—Mrs. Treadwell, Sheb. Co., Wis., Nov. 28, 1916.

**Alyssum, Sweet**, a lovely little ever-blooming, profuse-blooming annual. Plants low and spreading, becoming a carpet of white fragrant bloom. Common Sweet, Procumbens or Carpet of Snow. Little White Gem, and Little Dorrit erecta. Lilac Queen. Separate or mixed.

Mr. Park:—We had large beds and borders of Alyssum this year, and they are beautiful. Also fine for bouquets.—Norman W. Dosch, E. Prospect, Pa., Nov. 18, 1916.

Mr. Park:—I planted Sweet Alyssum late in summer, and here late in November the beds are white with sweet-scented bloom. The plants stand light frosts, and bloom so abundantly that it is a favorite with everyone who has tried it.—Mrs. O. A. Budd, Prescott, Ariz., Nov. 20, 1916.

**Amberboa muricata rosea**, new, beautiful, Centaurea-like annual; free-blooming, fine for cutting.

**Anagallis**, Pimpernel. Plants a foot high, covered with bright, pretty flowers. Sanguinea red, Cerulea blue, Lilacea lilac, separate or mixed.

**Anchusa**, beautiful blue-flowered biennial growing three feet high; makes a fine display, almost equal to Delphinium, early in the season. Stake the plants, as they branch, and are loaded with foliage and flower-clusters. Capensis, C. Angustifolia, Italica, and I. Dropmore, separate or mixed. The Dropmore Anchusa is very showy.

**Anemone coronaria**, the Poppy Anemone, large, showy white, red and blue flowers. St. Bigid mixed.

**Anthemis Kelwayi**, two feet tall, forming a dense clump of rich, golden, Daisy-like bloom throughout autumn. A very desirable hardy perennial blooming the first season.

**Arctotis**, an annual that delights in a dry sunny bed; grows a foot high, and bears large, bright showy flowers. Breviscapa orange. Grandis lavender, separate or mixed.

**Argemone**, hardy annuals from Mexico, 2 feet high, crisp, veined foliage and large, showy Poppy-like bloom. Does well in very sandy, rather dry soil and hot sunshine. Grandiflora, white; Mexicana, yellow; Hybrid, of various colors; all sorts mixed.

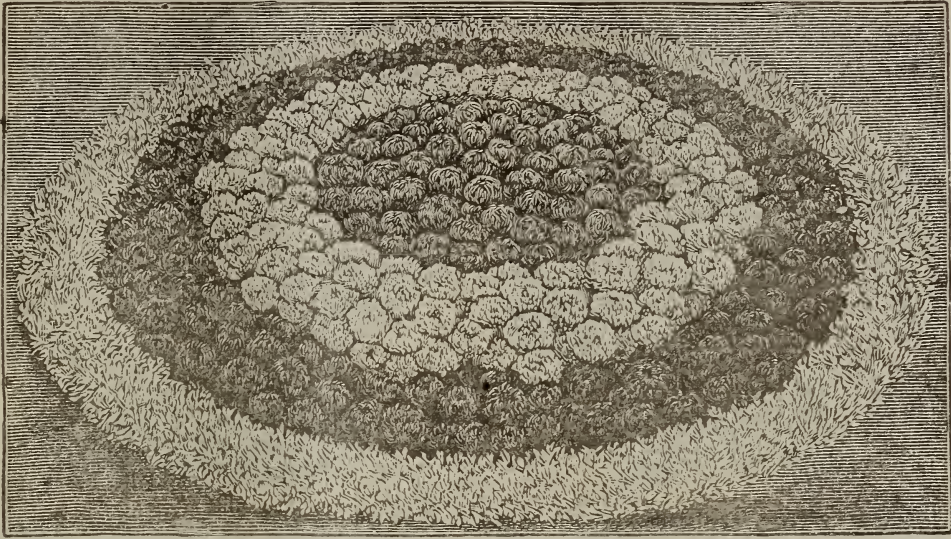
**Arnebia cornuta**, a lovely annual, 1 foot, with flowers gold, spotted brown. Very pretty.

**Artemisia annua**, often known as Sweet Fern, because of its fragrant, Fern-like foliage; three feet high, dense and pretty, and useful in bouquets.

**Asperula Azurea setosa**, an annual a foot high; dense, branching, globular growth, every branch tipped with clusters of small, blue, fragrant flowers.

## Aster, Park's Fine Bedding.

**Dwarf and Compact. Makes a Glorious Bed of fine Double Flowers. The display lasts for weeks. Rich, Beautiful Colors.**



This splendid Aster grows from ten to twelve inches high, and set eight inches apart the plants afford a grand display of large showy double flowers throughout autumn. Colors are very rich and distinct, and as each plant branches and bears many flowers the effect is hardly surpassed. I supply four packets of seeds for the bed illustrated, as follows: Center, Blue; next White; outer ring Red, and the bed margined with Sweet Alyssum. The packets are proportioned to afford an abundance of plants for the bed, and the price for the four packets is only 25 cents. The packets separately will cost 10 cents each. Make the circles eight inches apart, and set the plants eight inches apart in the circles. Mulch the bed with stable litter when the plants begin to throw up flower stems.

### Aster, Late Branching.

**A Glorious Aster for Beds. Unsurpassed for Cutting. Mammoth Flowers on Long Stems. Profuse Blooming.**



This is perhaps the most popular of Double Asters. Plants grow two feet high, and become a waving mass of big double flowers produced upon strong stems. In beds they last for weeks and are wonderfully attractive, and when cut there are no autumn flowers more lasting, showy or beautiful. I offer choice seeds of the

most charming colors, as follows: White, Peach Bloom, Rose, Crimson, Violet, Gray Violet, Deep Pink, Dark Blue, Shell Pink, Lavender, Enchantress, separate or mixed.

Mr. Park:—My packet of mixed Aster seeds was a great success. I sowed them in a window box in February, transplanted to a sunny bed when 2 inches high: every one grew. I had the largest Asters I have seen, all shades of white, pink and lavender.—Mrs. E. H. Dixon, Hockessin, Del., Nov. 5, 1916.

### Aster, Pompon Crown.

**Very Showy Imbricated Aster. Many Rich Colors contrasted with White Center. Fine for Bedding.**



This Aster is always greatly admired because of its full double flowers in rich colors, strikingly contrasted with pure white centers. The plants branch and form handsome clumps, covered with bloom during autumn. They make a fine appearance in a bed, and the flowers are charming in a vase. I offer very choice seeds of this fine Aster. Lilac, Magenta, Red, Rose, Red, Violet, separate or mixed.

**Betteridges Quilled.** the finest of quilled Asters; two feet high; large, showy flowers, mixed.

**Boltz Dwarf Bouquet.** a very dwarf sort, the plants appearing as a bouquet of fine double flowers of various colors set upon the ground; mixed.

**Cardinal.** fine brilliant scarlet, branching habit; an English sort.

**Christmas Tree.** plants grow in the form of a Christmas Tree, small double flowers, rich colors, mix.

**Crego,** large, very double, one of the finest. White, Shell Pink, Dark Pink, Blue, Red, separate or mixed.

## Aster, Victoria.

Large, Open, Full-double flowers. Surprisingly Beautiful. Plants a Mass of Rich Bloom. All the Finest Colors.



The Victoria Aster is a very old variety, but still holds its own among Asters, as it has been much improved by careful cultivation and selection. The petals are broad, charmingly imbricated, very large, and showy in beds, and valuable for cutting. They appear in a wonderful variety of shades and colors. One of the very best of Asters. White, Peach Bloom, Gray Violet, Indigo Blue, Salmon Yellow, Light Lilac, Magenta, Mauve, Rose, Hortense Red, Dark Red, Light Yellow, separate or mixed.

Mr. Park:—On account of the dry weather my Victoria Asters did not grow tall but they were full of buds and blossoms of many colors, very double and beautiful. I used the flowers for bouquets, and they lasted three weeks. Some plants I lifted and potted for the house lasted longer.—Mrs. F. H. Brown, Scipio Landing, Ohio.

**Chrysanthemum-flowered, Dwarf Perfection mixed.** New English Chrysanthemum-flowered, said to be a grand improvement upon the older class.

**Crown or Cockade,** a very elegant Aster, the flowers large, of various colors with a pure white center. I offer very choice seeds of this superb Aster, mixed colors.

**Crown, and Crown Pompon,** in the various colors. A new French mixture.

**Early Hohenzollern,** large, fluffy double flowers; finest mixed.

**Early June,** the earliest of all Asters; 15 inches high, fine for beds, flowers large, double, white.

**Earliest Parisian White,** a very early white double Aster; very fine for an early bed.

**Giant Comet,** 2 feet high, branching, one of the finest; flowers very large, frilled, and beautiful, finest colors mixed. This splendid Aster makes a fine bed.

**Gitana,** large-flowered; a new French sort with showy flowers of various colors; mixed.

**Globe Pyramidal,** an elegant Globe-flowered Aster; showy in beds; finest mixed.

**Goliath,** the largest and finest Exhibition Aster, flowers of various colors, and very attractive.

**Half Dwarf Multiflor,** double flowers in richest colors; a fine Aster; mixed.

**Japanese,** fifteen inches high; flowers very large, double and fluffy, like a Japanese Chrysanthemum; finest colors mixed.

**Lilliput,** dwarf plants with lilliputian double flowers of great beauty; mixed.

**Perfection mixed,** a choice mixture of the improved Pæony-flowered; plants two feet high; flowers very double, and of the richest colors.

**Pyramidal Sorts mixed,** a superb mixture of the finest, such as Pyramidal Quilled, Victoria, Chrysanthemum-flowered.

**Queen of the Earliest,** a splendid very early sort; White, and Garnet Red with White Edge.

## Aster, Truffauts.

A Splendid Incurved Aster. Grows Two Feet high. Branches Freely. Enormous, Rich-colored Flowers.



This is the finest Aster of the Incurved class. The plants grow tall, each branch holding an immense double flower which lasts for weeks. In a bed the plants make a striking display throughout autumn, the massive flowers in richest colors waving in the breeze giving a charming effect. The flowers are 'also fine for cutting for vases, or for corsage flowers. Set plants ten inches apart. Colors: Snow-White, Rosy-White, Amethyst, Chamois, Flesh Color, Lilac with White Edge, Magenta-red, Negress, Rose, Coppery Rose, Cherry Red, Cinnabar-Red with White Edge, Blood Red, Light Violet, and Dark Violet, separate or mixed.

## Aster, Improved Ostrich Feather

An Aster equal in size and beauty to any in the Comet section. The petals are long, narrow, loosely twisted, forming immense fluffy flowers, and are borne on long, strong stems. The plants grow two feet high, branch freely, bloom abundantly, and are very graceful and beautiful. One of the finest Asters. White, Flesh-colored, Lilac, Gray Violet, Copper-red, Rose, Coppery-rose, Salmon-rose, Violet, Red, Terra-cotta, separate or mixed.



## Aster, Chrysanthemum Dwarf.

One of the handsomest of Dwarf Asters, desirable for beds and pots. The plants grow a foot tall, and bear large, showy, full double flowers on long stems. Autumn-flowering. Red, White, Lilac, Flesh, Copper-scarlet, Magenta Red, Rose, Hortense Rose, Scarlet-red, Violet, Light Violet. I also supply all these in splendid mixture.

**Ray Aster,** outer petals broad, inner narrow; mixed colors.

**Sada Yakka Grandiflora,** an improved Sada Yakka; flowers soft Pink, large and double.

**Silver Cloud,** a lovely dwarf Aster showing a mass of white flowers—a silvery cloud of bloom.

## Aster, New Autumn Queen.

The Queen of Autumn Asters. Plants Robust, Branching, Free-blooming. Flowers Very Large, Full-double. Richest, Most Varied Colors.



Flower and Plant of New Queen Aster.

This is a very handsome new Aster, later than Queen of the Market. The plants are of vigorous growth, bearing large very double flowers upon long, strong stems. A splendid sort for beds or pots. Colors are Snowdrift, Azure Blue, Fiery Scarlet, Delicate Rose, Carmine Rose, Dark Blue, Deep Salmon, Rose, separate or mixed.

### Queen of the Market.

Early Flowering. Flowers of Medium Size, Double to the Center. Lovely Colors.

A very beautiful double Aster blooming early in the season, and a favorite for beds as well as for pot-plants to sell at the flower market. The plants bloom three weeks earlier than other varieties. Grow from 12 to 15 inches high; very free-blooming. My seeds are saved from carefully selected stock, much improved. White, Blush, Bright Rose, Bright Blue, Deep Scarlet, Seal Red. I can supply these varieties separate or mixed.



**California Branching.** This is similar to other Branching Asters, but a strain grown in California, and said to be very handsome. The plants grow two feet high, bear large, full-double flowers, and the colors are rich and varied. Splendid for beds and unsurpassed for cutting. My seeds are direct from the growers of this Superior Branching Aster. Colors: White, Pink, Crimson and Blue, also mixed. Per packet 10 cts for either separate colors or mixed.

### Aster, Large-flowered Single.

This class of Asters grows two feet high, bearing large, Daisy-like flowers upon long stems, very graceful and beautiful. The flowers last well, and are fine for cutting as well as for a display in beds. Colors are White, Rose, Red, Light Violet, separate or mixed.

**Soliel d'Or**, large yellow, quilled; the best.

**Triumph**, a Dwarf Pæony-flowered Aster with rich, blood-red flowers; showy in beds or pots.

**Vick's Branching White**, special selection, much improved; very double; best for late cutting.

**Victoria Needle**, needle-like petals, double; mixed colors.

**Violet King**, strong grower; long, stiff stems; Color soft violet-lilac; fine for cutting.

Complete special mixture of all varieties.

### Aster, Perennial.

Very Profuse Blooming. Seedlings Bloom First Season. Rival the Chrysanthemums.



I take pleasure in offering very choice large-flowered varieties of Perennial Aster, plants of which are perfectly hardy, grow three feet high, and become a graceful, waving mass of lovely single flowers throughout late autumn. They are showy in the garden and elegant in a vase, as the illustration indicates. Easily grown from seeds, healthy, hardy, never troubled by insects, and never fail to bloom profusely every autumn. Should be in every garden. Varieties:

**Bigelowii**, light blue, large, fine flowers.

**Cassiarabicus**, in many colors, mixed.

**Novæ-Angliæ**, large, handsome, mixed.

**Snowflake**, white; very pretty bloom.

All sorts, large-flowered, in complete mixture.

## Park's Fine Double Balsams.

Beautiful Everblooming Annuals. Flowers double as a Camellia, and almost as large. Waxy in texture, and of Many Colors.



**Prince Bismark**, tall, branching, plants bearing full-double salmon-rose flowers; very fine.

**Primrose**, a very striking Balsam, similar to Bismark, but producing full-double Yellow flowers.

Mr. Park:—The Giant Balsams were certainly fine. They grew fast and formed such double flowers. They bloomed till late in summer.—Stella G. Weber, E. Earle, Pa.

**Bartonia aurea**, branching plants a foot high bearing bright, shining yellow flowers. Mulch the plants on the approach of summer.

**Beet, Ornamental**, showy, variegated foliage, fine for beds and borders when judiciously used. Victoria, red; Silver, curled; Brazilian, variegated; Chilian crimson, Chilian yellow, separate or mixed.

**Bellis, Double Daisy**, a lovely hardy perennial useful for beds and edgings; begins to bloom early, and blooms nearly all summer. Flowers large, very double, on long stems issuing from a rosette of foliage. The new *Monstrosa* varieties are greatly improved in size and very double. *Monstrosa* red, *Monstrosa* white, *Longfellow*, *Snowball*, *The Bride*, *Ranunculiflora*, separate or mixed.



**Bidens**, half hardy perennials, bearing single flowers, showy in beds and useful for cutting. *Atrorhanguinea*, black-crimson; *Dahliaoides*, fine new hybrids, the flowers of various colors; mixed.

**Browallia**, annual a foot high, branching and forming bushy plants covered with flowers throughout the season. Grown in pots they are fine for winter blooming. The *Dwarf Compact* and *Speciosa Major* are especially valuable for pots to bloom in winter. Blue, Violet, White, Compact Blue, *Rozzi* lavender, *Speciosa major* large purple flowers, separate or mixed.

The Double Balsam is one of the easiest grown and most satisfactory of annuals, as well as the most beautiful. The plants (except of Dwarf sorts) grow from two to three feet high, and every branch becomes a lovely wreath of exquisite bloom. Easily transplanted, and should be set a foot apart. The seeds I offer are of very superior quality, and will not only grow, but yield the finest flowers.

### Park's Camellia-flowered.

This is the finest of all Balsams. The plants grow vigorously and make a fine display in a bed, blooming freely and continuously for many weeks. If started in summer and grown in pots the plants are fine for winter-blooming. I offer the following splendid colors: Pure White, Pure Scarlet, Rich Crimson, White reflecting rose, Light Yellow, Lilac, Violet, Bright Salmon-rose, Rose spotted, Violet spotted, separate or mixed.

**Double Rose-flowered**, large, very double flowers in a great variety of colors, mixed.

**Double Dwarf**, ten inches high, free-blooming, the flowers semi-double, of many colors, mixed.

**Double Spotted**, semi-double, of many colors, mixed.

**Carnation-striped**, semi-double, finely striped, mixed.

**Royal Balsam**, King, Red; Queen, Satin Rose, mixed.

**Solferina**, double White, handsomely spotted and striped.

**Goliath**, tall, fine double, Chamis Rose.

Complete Special Mixture of all the above varieties.

Mr. Park:—Last Spring I planted some Camellia-flowered Balsam seeds, that grew about two feet high. The branches were covered with blossoms much like a double Rose. I never saw any flower to equal thier beauty.—Mrs. J. E. Turner, Mentor, Minn., Nov. 18, 1916.

**Basil**, Sweet, an herb with deliciously-scented foliage; fine pot plant.

**Brachycome**, Swan River Daisy, pretty, graceful annuals a foot high; appear best in masses. Blue Star, Red Star, White, Rose, White Star, separate or mixed.

**Calalia**, *Flora's Paint Brush*, small brush-like flowers in clusters on long stems; hardy annual; 15 inches high; reproduces from self-sown seeds; fine for cutting. Yellow, Scarlet, or both mixed.

**Calandrinia**, low spreading succulent annuals, showy throughout the summer; useful for beds or edgings; like a sandy, sunny bed. Rose, White, Purple, also mixed.

**Calceolaria scabiosifolia**, a pretty little annual ten inches high; flowers small, compressed, of a lovely yellow, and freely produced; a handsome pot plant.

**Callirhoe**, easily grown, handsome Malwos blooming freely and continuously. *C. pedata* grows erect to the height of two feet, and will bloom late, defying the autumn frosts; *C. involucrata* is a trailing perennial excellent as a bedding plant. The flowers of both are a rosy carmine, about the size and form of a single Portulaca. Separate or mixed.

**Cannabis**, Giant of Piedmont, an annual growing eight feet high, branching and making a fine large foliage plant. Useful for a screen or group. Seeds useful for birds.

## Clarkia—Finest Varieties.

**A Splendid Garden Annual. Easily Grown. Elegant Double Flowers. Superb Colors. Plants Make a Glorious Bed.**

When visiting the big Seed Farms, of Germany, some years ago, the beds of Clarkia were in full bloom, and I realized as never before the beauty and utility of this fine annual. The plants grow a foot high, branch in tree form, and are a mass of lovely flowers in many colors. Anybody can raise them from seeds, and a good-sized bed in full bloom will be sure to delight those who see it. By all means give this annual a trial. I offer seeds of the finest improved varieties, and heartily recommend them to all my patrons. Sow in rows eight inches apart and thin to six inches apart in the rows; or, sow in the nursery bed and transplant. Elegans

Double Rose, White, Salmon, Striped, Scarlet, Carmine, Pulchella Brilliant Red, Margined, Pulcherrima Double, Violet, mixd.

Mr. Park:—Your Clarkias are especially beautiful, like dainty Roses; bloom freely all summer, fine for cutting.—Mrs. Corson, Auburn, Md., Oct. 15, 1916.

Mr. Park:—I sowed your Clarkias where sheltered from noon sun, and had lovely big double flowers of all colors; they were fine.—Ella Buffum, Lackawanna, N. Y. Dec. 6, 1916.



## Calendula Grandiflora.

**Early. Continuous-blooming till Winter. Fine for Beds and Pots.**



An excellent hardy annual of easy culture; will grow a foot high; branching, and is covered with bloom throughout the season; flowers large, double, various shades of yellow; some are striped; it blooms well after frost, rivalling fall Chrysanthemums. Colors: Orange, Sulphur, Orange-striped, Sulphur-striped; also Pongeei fl. pl. white, Ranunculoides fl. pl., and Single White Pluvialis. I supply all of these separately or in splendid mixture.

Mr. Park:—Your Calendulas are beautiful, large, lasting annuals. They seem prettier late, after the other flowers have gone.—J. H. Werdein, Rochester, N. Y., Nov. 19, 1916.

**Campanula, annual.** Charming hardy annuals, seedlings beginning to bloom early, and bearing a profusion of bloom. C. procumbens is fine for baskets or edgings, blue and white; Lorei, blue and white; Pentagonia, blue; Longistyla, large, lovely violet blue; Macrostyla, superb violet flowers; Speculum, Venus Looking Glass, fine blue. Separate or mixed.

## Canna, Gladiolus-flow'd

**A Fine Bedding Plant. Grows Three Feet High. Huge Trusses of Rich Bloom.**

I heartily recommend the Gladiolus-flowered Cannas, as they will grow in any rich, moist sunny soil, and make a grand display of both foliage and flowers throughout the season. No flower makes a more attractive display, and no bedding plant blooms more freely or continuously. The flowers range in color from nearly white to



deep crimson, including rich golden shades and variegations. The mixture I offer was saved the past season from the finest named bedding varieties, and will surely please all who sow it. I offer only mixed. I do not offer separate colors this season.

Mr. Park:—My Cannas from your seeds were splendid. They were of many colors, and bloomed as early as those grown from tubers.—Mrs. Tanner, Carron Mill, Ills., Nov. 14, 1916.

## Carnation, Improved Early.

**Bloom First Season. Plants Stocky, Hardy, Free-blooming. Flowers Large, Very Double, Rich-colored, Deliciously Scented.**



The Improved Carnations I offer begin to bloom in four months after the seedlings appear, and bloom freely till frost. They are hardy, and will come into bloom early the following season and make a fine display during the summer, if not allowed to become exhausted. The plants like hot sunshine and deep, moist soil. They are improved by mulching with stable litter during summer. I offer carefully named seeds that can be depended upon to produce the finest flowers. White, Yellow, Red, Striped; separate or mixed.

I can also supply French Early-flowering Giant in mixed colors.

For other Carnations see under head of Perennials.

Mr. Park:—The Large-flowered Early Carnation seeds I bought of you gave me the finest lot of Carnations I ever had. There were seventeen different colors and shades. An immense double fringed salmon-red, a plain one, a beautiful yellow, and a soft crimson were especially admired by many passers-by. I thank you for two years of daily pleasure, and all that for 5 cents.—Mrs. Bailey, Selinas, Calif., Nov. 23, 1916.

Mr. Park:—Last summer I got a packet of your Early-flowering Carnation seeds and planted them in August. I had a few flowers yet that fall, and in the spring they came out in all their glory. I never saw as fragrant flowers as they were. People passing along the street would smell their fragrance and stop and get some of the flowers. The only fault I found with them was I never had any flowers for myself, as the passers-by always got them.—D. H. Snowberger, Fayette, Idaho, Nov. 11, 1916.

**Calliopsis**, very pretty, attractive flowers freely produced on slender stems; desirable for growing in beds in masses, and for cutting. The Tall sorts grow two feet high, and can be used among low shrubby or in beds; the Dwarfs grow a foot high, and are fine for borders or edgings. Once started the plants continue from volunteer seeds. Sow in fall or early spring. Dwarf Compact in Yellow, Crimson, Marbled and Bicolor, also mixed; Tall Mixed; Bicolor Hybrids, double; Tom Thumb Crimson King and Tom Thumb Beauty; Tinctoria Dwarf Purple, Crimson, Marbled, and Yellow and Black. I also offer a Complete Special Mixture of these sorts, double and single. Mr. Park:—Your varieties of annual Calliopsis are very satisfactory. I sow where the plants are to bloom, and the plants become a waving mass of beautiful golden flowers with dark center; fine for cutting; will re-seed.—Bessie E. Snipe, Woolwich, Me., July 23, 1916.

**Candytuft**, annual, old-fashioned garden flowers of easy culture; make a very showy and beautiful bed; grow a foot high, and become a sheet of bloom. Tall varieties: White, Carmine, Purple, Rose Cardinal, Dunnett's Crimson. Sweet-scented white, separate or mixed. I also supply the Hybrid Dwarf Sorts in White, Rose, Crimson and Lilac, also mixed.



**Capsicum**, Ornamental Pepper. These are very decorative plants either in the garden or in pots for the porch or window. The fruits are of many shapes, colors and sizes. All are edible. I have a grand collection, as follows: Black Nubian, Cardinal, Cayenne Yellow, Celestial, Chinese Giant, Cherry-fruited Red, Chilli Red, Columbus Red, Dwarf Chilli, Early Dwarf Red Squash, Extra Early Bell, Golden Dawn, Hurcules, Japanese Scarlet Cluster, Keleidoscope, Large Bell, Large Sweet Spanish, Little Gem, Large Red, Long Yellow, Miniature, Ruby King, Square Sweet Chinese, Tomato-fruited Yellow, Tom Thumb, Yellow Nocera. Separate or mixed.

**Carduus Marianus**, a handsome plant with white-veined foliage and brush-like pink flowers; Benedictus, the Holy Thistle; Kerner, tall, with big purple-red flower heads. Separate or mixed.

**Carthamus tinctorius**, Garden Saffron; a showy golden-flowered annual growing six feet high.

**Catchfly**, *Silene armeria*, a pretty, hardy annual a foot high; flowers small. Red and White, in clusters. Propagates from self-sown seeds. Separate or mixed.

**Celosia, Cristata, Coxcomb**. Elegant as bedding plants, and desirable for pots. They begin blooming when small and become larger and handsomer until frost. Easily grown, and very showy. They like sun and good soil; should stand eight or ten inches apart in a bed. The Dwarf sorts grow eight inches high, with large broad combs, the massive foliage covering the bed, and making a fine setting for the bright combs. Colors: Golden, Sulphur, Crimson, Cardinal Red, Firey Red, Glasgow Prize, Empress, also all in mixture. Empress is the best for bedding purposes.



Mr. Park:—I always thought the description of Coxcomb Celosia was an exaggeration until this year we raised one that measured 18 inches across. They are no more trouble to raise than a bean.—Mrs. Haymes, Paducah, Tex., Nov. 6, 1916.

**Celosia Magnifica** is the improved plume-flowered, two feet high, gorgeous in a bed, also fine for pots. Colors: Crimson and Gold, separate or mixed. I also supply Dwarf Plume mixed, Pink Plume, Huttoni, Japonica and Spicata. Also, all sorts in complete mixture.

**Centaurea, Cyanus, Bachelor's Button**. A fine hardy annual, showy in the garden and splendid for cutting. As a button-hole flower it will often last for two days, and it appears well in small bouquets. Easily grown, and will re-sow. The Tall sorts grow two feet high, branch, and are covered with bloom. Single, Colors: White, Azure or Emperor Wm., Rose, Variegated, Brick Red, Mixed, Double, Colors: White, Rich Blue, Purple, Azure, Mixed, Dwarf Compact sorts, a foot high, good for beds; in colors Victoria Blue, White, Rose, Variegated, Mixed.

Mr. Park:—My Centaureas from your mixed packet were fine. I raised so many plants, and they bore flowers of so many different shades! I cut a lovely bouquet of the flowers late in October.—Mrs. J. E. Hinton, Cody, Neb., Dec. 6, 1916.

**Centaurea**, various species, as *Depressa* Blue; *Moschata*, Blue, White, Purple, mixed; *Imperialis*, White, Red, Lilac, Gigantea, Splendens, Favorita, Iphigenia, mixed. Odorata, Red Sweet Saltan, Yellow Sweet Sultan, Chameleon, mixed. Also Complete Special Mixture of all Centaureas.

**Centaureidium**, an annual two feet high, bearing bright yellow flowers. Set six inches apart. It will bloom all summer.

**Cerithe**, odd but not showy annual; yellow and brown flowers; a good honey plant. Mixed.

# Chrysanthemum, Annual.

Easily Grown. Begin Blooming Early. Never Troubled by Insects. Bloom Freely Throughout Summer and Autumn.



CHRYSANTHEMUM BRIDAL ROBE.



CHRYSANTHEMUM CORONARIUM DOUBLE.

The Annual Chrysanthemums are among our best flowers for either garden or window. Started in boxes early and transplanted to eight inches apart they make a showy bed or border, the plants growing fifteen inches high, forming a dense mass of bright, attractive flowers from early summer until after frost. C. Carinatum is the most valuable, the flowers coming in single and double forms, and in various colors; the single-flowered in some showing a fine distinct zone of brown. The dwarf varieties of C. coronarium are charming in a bed, and last in bloom till winter. C. Inodorum Bridal Robe is a biennial with full-double white flowers, fine for cutting. Started in early autumn the varieties of C. carinatum are tum has large, single, showy flowers, and is fine

**Carinatum, Single.** White Yellow, Scarlet, White with Crimson zone, Rose, Yellow with Scarlet zone, or mixed.

**Double Purple, Dunnett White, Fringed** in various colors mixed, Golden yellow with yellow foliage, mixed.

**Dwarf Double,** splendid, in Purple, Yellow or Scarlet, separate or mixed.

**Coronarium, Double, White, Sulphur, Yellow;** separate or mixed. Pumilum Dwarf Double, Golden Yellow.

Other Chrysanthemums: Segetum Northern Star White, Helios golden, Gloria yellow, Frutescens white, Bridal Robe white double, see engraving.

All Varieties of Chrysanthemums mixed.

## COSMOS.



A splendid annual. The new Hybrids grow four feet high and bloom profusely from mid-summer till frost; the Mammoth sorts grow eight feet, becoming masses of bloom in late autumn. I offer choice seeds of the best strains. Large-flowered Hybrids, early-flowering, elegant in a bed, or for a screen. White, Crimson, Rose, Purple, Klondyke, separate or mixed. Mammoth Purple, Rose White, Lady Lenox, mixed. Also Complete Special Mixture Mr. Park—Your Cosmos is the best of free-blooming annuals. Its dainty lace-like foliage and brilliant flowers make it fine for cutting.—Katie M. Roads, Hillsboro, Ohio.

**Centrauthus Macrosiphon, succulent** plants a foot high, covered with pretty little flowers in dense clusters; bloom freely till frosts, White, Red, mixed.

**Cerastium Biebersteini, a hardy dwarf** perennial with hoary foliage, forming a carpet, from which the white Daisy-like flowers appear upon long stems.

**Chenostoma fastigiata, a pretty annual** eight inches high; flowers soft Rose in dense clusters.

**Chenopodium ambrosioides, a handsome,** free-blooming, ambrosia-like plant.

**Cheiranthus Maritimus, Virginia Stock,** pretty little annuals blooming quickly and freely from seeds; grow in masses; started in autumn they bloom well in pots. Crimson, White, Carmine, Yellow, Mixed.

**Cleome, Spider Flower.** An annual growing three feet high, branching and producing showy spikes of graceful flowers throughout summer and autumn. Gigantea White and Crimson, Pungens and Speciosissima all mixed.

## COLEUS.

Easily grown from seeds, very beautiful in foliage, elegant for beds and fine for pots. I offer seeds of finest quality, imported from England, France and Holland. Seedlings quickly become showy plants. Fine mixture



Mr. Park:—For novelty and beauty I like the Coleus. Hardly two seedlings are alike. Planted together they make a showy bed.—Mrs. Orchard, Pacific Grove, Cal., Nov. 21, 1916.

**Clintonia pulchella, blue, white, variegated,** elegans, separate or mixed. A pretty annual not unlike Lobelia; free-blooming and fine for baskets and pots.

**Collinsia Bicolor, a showy and very desirable** annual two feet high, bearing whorls of lovely flowers of white, blue, carmine, variegated. Separate or mixed.

**Collomia coccinea, an annual a foot high,** the flowers scarlet, in clusters, showy for several weeks.

**Convolvulus Minor, Dwarf Morning Glory;** a Petunia-like annual blooming all summer; flowers not unlike Morning Glory, somewhat smaller, but very bright and beautiful, and of many rich colors. White, blue, Acaulis, Crimson-violet, Striped, Sub-cœruleus, Tricolor, Purple, Separate or Mixed. A very beautiful, easily grown garden flower.

**Cosmidium Burridgeanum, Orange Crown,** a new and beautiful sort; plants a foot high, bearing freely pretty Calliopsis-like flowers on long stems, golden yellow with a broad circle of rich orange around the disk.

**Crepis, Hawkweed, an easily grown annual;** flowers pink, white and golden yellow; showy in a bed and good for cutting. Separate or mixed.

**Cuphea, pretty little plants** quickly coming into bloom from seeds; make a lovely bed, and are charming in pots. Miniata Red, White, Purple, Mixed.

**Cynoglossum, annuals three feet high,** branching and forming dense little trees bearing a profusion of pretty bloom much liked by bees; stake the plants. Celestium blue, and Linifolium white, separate or mixed.

## Dahlias, Single and Double.

As Easily Grown as Zinnias. Seedlings Bloom about as Early as Tuberous Plants. Rich, Varied Colors. Single Flowers as Beautiful as Double.



Dahlias can be raised successfully from seeds by anyone, and the plants will begin blooming in mid-summer and bloom freely till frost. Sow the seeds in a window box early, and transplant to a sunny bed, or sow out-doors later. I have seeds of the finest strains, both double and single. The single flowers are very graceful and beautiful, and by some are preferred to the double.

Single-flowered. Hornsveld's Giant Hybrids mixed, new strain from Holland; Striped and Spotted; French Giant mixed, Coronata or Crowned; Neck-ruffle mixed; Odorata Grandiflora. All mixed. Single-flowered Tom Thumb, Dwarf, finest mixed.

Double-flowered, extra fine mixed; Cactus-flowered mixed; Lilliput mixed; Dwarf mixed; Double sorts mixed. All pkts of Double Dahlias are 10 cts. Single and Double in mixture.

Mr. Park:—I raised some of the finest Dahlias I ever saw from your seeds—as fine as any named kinds. I had all colors from darkest reds to white, also striped. I advise my friends to get Dahlia seeds, as they will be pleased with the result.—Kate Unverferth, Perryville, Mo., Nov. 17, 1916.

Mr. Park:—You ought to see my Dahlias from Spring-sown seed. I started them in boxes early and retransplanted. They are a mass of purple, red, yellow, white and spotted flowers, some with cactus petals. They are beautiful.—Mrs. Nash, San Antonio, Tex.

Mr. Park:—I had many colors from a packet of your mixed Dahlias, single and double. The plants bloomed almost as early as those from tubers.—Mrs. N. A. Farber, Haswell, Col., Dec. 1, 1915.

**Daisy**, Double, fine for edging, and early spring-blooming; Colors white, rose, red. [see *Bellis* p. 8.]

**Datura**, showy tuberous half-hardy perennials blooming freely the first season from seeds. Plants grow two feet high, of spreading habit, and bear immense trumpet-shaped flowers, some single, and some duplex or double, mostly deliciously fragrant; are of easy culture. *Wrightii*, single, fragrant, lavender; *Gigantea*; *Fastuosa violacea* fl. pl., double violet; *Fastuosa* fl. pl., white, also purple; *Chlorantha* fl. pl. Golden Queen, large golden flowers; *Huberiana* mixed; All sorts mixed.

**Delphinium**, Larkspur. Beautiful hardy annuals; do well sown in spring or fall; flowers in long spikes, rich-colored, showy in beds, also desirable for cutting. Tall Branching, White, Flesh, Lilac, Striped, Brilliant Rose, Coppery Rose, Red, Violet, separate or mixed. Tall Rocket, one tall spike of bloom; White, Flesh, Gray, Lilac, Rose, Violet, separate or mixed. Dwarf Rocket, a foot high, very fine; White, Brown, Flesh, Gray, Mauve, Lilac, Rose, Violet, Separate or mixed. Emperor, Double, mixed. Candelabrum, Double, mixed. Cardiopetalum, Dwarf, Violet. I also supply Complete mixture.

**Delphinium**, Grandiflora, Perennial Dwarf Compact, Blue, also Porcelain Blue; Grandiflora Double mixed; Grandiflora Porcelain Blue and Reddish Lilac; Separate or all mixed. These bloom the first season and are very beautiful sorts.

**Diasecia Barbaræ**, an exquisite little flower blooming profusely the first season; flowers soft rose, delicate and pretty; charming in masses, and for cutting.

**Didiscus Cœruleus**, plants a foot high, blooming from August till October; flowers blue, in flat umbels. Likes a dry, warm place.

**Dimorphotheca aurantiaca**, the new South African Daisy; flowers golden yellow; plants grow a foot high, and bloom profusely from mid-summer till after frost. I also supply the Hybrids in mixed colors.

**Dracocephalum**, Dragon's Head, Bee Balm; an annual, 2 feet high; flowers gaping, attractive; Blue, white, mixed.

**Echium**, Viper's Bugloss; attractive plants allied to Forget-me-not, but of coarser growth; two feet high, the flowers borne in long wreaths. *Plantagineum*, Creticum, both bearing blue flowers; separate or mixed.

**Erodium Gruinum**, Stork's Bill, a plant allied to Geranium; clusters of pinkish bloom. I can also supply the rare *Erodium Snowbatum*.

**Erysimum**, lovely cruciferous flowers; plants grow a foot high, blooming profusely, the golden fragrant flowers produced in clusters. The new *Erysimum Allioni* is a glorious golden bedding flower, and started in spring will make a fine display during autumn, until after severe frosts. *Erysimum Dwarf Compact*, is also good for beds. E. *Peroffskianum*, an annual, and E. *Pulchellum*, a perennial are also fine. Separate or mixed.

**Erythraea linarifolium**, a neat little plant of the Gentian family; handsome.

## Dianthus Chinensis. Blooms First Season. Single and Double. Showy in Beds. Fine for Cutting.

Among the most beautiful and easily grown and lasting of Garden Flowers. Seedlings begin to bloom quickly, and are showy till after frosts. The flowers are rich-colored, often strikingly variegated, make an attractive bed, and are excellent for cutting. My seeds are of superior quality.



**Heddewigii** single, Rose.

White, Crimson, White with eye, Blood Red, mixed.

**Heddewigii** Double, White or Snowball, White striped red, Purple, Margined White, Copper Scarlet, Fireball scarlet, separate or mixed.

**Imperialis**, Double White. Spotted, Striped, Crimson, Carmine, Rose, Mixed.

**Diaden Pinks**, Double, Dark colors, Light colors. Count Kerchove, Dwarf, separate or mixed.

**Laciniatus**, Double Fringed; Salmon Queen, Snowdrift, Lucifer Orange scarlet, Striped, Malmaison.

**Laciniatus**, Single, Zonalis Salmon red, Punctatus or Princess Pinks, Ornatus, Mirabilis, separate or mixed.

**Nephisto**, Salmon, Scarlet, Striped Blackish brown.

**Striped**, Double, beautiful striped Pinks, var. shades.

**Nobilis**, Royal Pinks, robust plants with single and double showy flowers in various shades.

**Superbus** Grandiflorus, large, deeply-fringed flowers.

**Dentatus** Hybridus, lovely Pink of various colors with a distinct eye.

**Stellaris** fl. pl., the lovely Star Pink with narrow fluffy petals. Also Complete Mixture of all varieties.

Mr. Park:—The Dianthus raised from your seeds were wonderful. I had a bed of Fireball, another of Snowdrift, and another of Striped. Some flowers were 3 inches across and there was such a profusion. They equal Carnations in beauty, but lack the fragrance. How much pleasure a person can realize from the small investment of 5 cents for a packet of your seeds!—Mrs. J. E. Turner, Mentor, Minn.

Mr. Park:—If I could raise but one kind of flowers I would choose your Chinese Dianthus. Seedlings bloom the first season, and the second year they are a perfect mass of pink, white and red blossoms. Plants last for several years and reseed.—Mrs. Toulion, Ellsworth, Wis., Dec. 11, 1916.

Mr. Park:—I sowed a packet of Dianthus seeds last year, and the bed was fine the first summer; the next summer, however, they were grand—every color, and just like velvet.—Mrs. Greenawald, Hicksville, O., Nov. 15, 1916.

## Eschscholtzia.

Showy. Free-blooming, Ever-blooming Annual for Beds and Edgings.



This is one of the bright, beautiful, ever-blooming annuals; it grows a foot high. Sow where the plants are to bloom, and thin to eight inches apart. The plants form a dense array of silvery, fine-cut foliage, above which the showy, cup-like flowers appear in wonderful abundance. Also fine double-flowered sorts.

Single; White, Striped, Sulphur, Orange, Rose, Cardinal, Carmine King, Douglasi, Golden West, Rose Queen, Canaliculata Rose, Mikado orange-scarlet, Mandarin Rose, separate or mixed.

Double: White, Sulphur, Orange, Striped, Rose, Orange-shaded, Crimson. Separate or mixed.

Single and Double in Complete Special mixture.

**Eucharidium**, hardy annuals allied to Evening Primrose; flowers rose, white, and purple, Mixed.

**Euphorbia**, annuals with showy variegated bracts; 18 inches high, showy throughout autumn. E. Variegata and Heterophylla mixed.

**Eutoca Viscida**, very free-blooming, beautiful little annuals eight inches high; bloom early from seeds; flowers blue, lilac and white, separate or mixed.

**Fedia**, a Valerian-like annual six inches high; flowers red, pretty, in corymbs. Floribunda, mixed.

**Fenzlia Dianthiflora**, a lovely little annual bearing masses of white and pink flowers; charming for borders and edgings. Colors separate or mixed.

**Gamolepis Tagetes**, a dwarf annual having the general appearance of a Marigold; flowers small, golden, like a small single Marigold; protuse blooming.

**Gilias in Variety**. These are very beautiful annuals of easy culture. G. Achillæfolia grows a foot high,

and has clusters of bloom at the summit of the branches. G. Capitata is similar, light blue. G. Compacta Nivalis is a dwarf sort with white flowers. Perhaps the most charming is G. tricolor, very prettily variegated violet, yellow and white; and there are several varieties as white, rose and violet. All are very attractive annuals, and call forth enthusiastic expressions of admiration. I enumerate the sorts; Achillæfolia, blue, white, rose, also mixed. Capitata cœrulea, lavender, blue, white. Minima cœrulea, blue, fine. Nana Compacta Nivalis, light blue. Tricolor, three-colored; Snow-White; Splendens, rose; Violet; separate or mixed. Special mixture, all sorts.



**Gaura Lindheimeri**, a handsome perennial three feet high, blooming the first season; flowers white.

**Gerardia Hybrida**, beautiful hardy perennials that bloom the first season; foliage fine-cut, and flowers tubular, of various colors, borne in long spikes.

**Glaucium Tricolor**, the finest of the Glauciums; plants two feet high, branching, and covered with large, Poppy-like flowers, yellow, orange and brown.

## Gaillardia.

Splendid for Beds. Bloom Freely from June till Winter. Fine for Cutting.



The annual Gaillardias are very desirable annuals easily grown from seeds. The plants stool out and bear waving masses of showy flowers on long stems. In a bed they make a fine display, and for cutting they are a favorite. The varieties of G. picta show flowers of various colors, single and semi-double. G. Lorenziana, double-flowered, are very handsome and free-blooming. G. Grandiflora is a hardy perennial, blooming the first season, and is perhaps, the finest of the lot.

Annual sorts: Red and Yellow, Aurora borealis, Salmoena, Lorenziana fl. pl. mixed; Amblyodon. Also mixed.

Perennial sorts; Yellow and Brown, Blood Red, mixed. Annual and Perennial varieties in complete mixture.

## GODETIA.

Glorious Annual. Large, Showy Flowers. Free-blooming. Richest Colors.



Here is an annual of rare beauty, easily grown, a foot high. A bed of them in full bloom is wonderfully attractive. Colors range from white with spots to deep glowing crimson; all are splendid, and make a magnificent display. They will surely please you. Sow the seeds in the bed, and thin the plants to six inches apart.

**Duchess of Albany**, silvery white with spots.

**Fairy Queen**, white shading to bluish, carmine spots.

**Gloriosa**, dark red. **Rubicunda** splendens fl. pl. red.

**Grandiflora Carmine**, double, new, very showy.

" **Maculata**, white with crimson spots, fine.

" **Rosea**, fl. pl. large-flowered, bright rose.

**Marchioness of Salisbury**, white with rosy pink center.

**Princess Henry**, satiny rose with broad crimson spots.

**Rosamond**, large, glossy light pink flowers, attractive.

**Schamini grandiflora fl. pl.**, bright rose, beds or cutting.

**Whitneyi** pyramidalis, fine carmine, **Pearl**, white.

" **Compacta**, brilliant, dazzling carmine.

Complete mixture of all varieties.

## Helianthus, Sunflower.

Big Showy Plants. Single and Double.  
Hardy Annuals. Easily Grown.



I offer a fine collection of the Annual Sunflowers. Some grow nine or ten feet high, the stem thickly clothed with leaves; others branch and assume the form of a tree. Some bear single flowers of large size; others bear densely double flowers. Some are dwarf, only three feet high. Colors range from sulphur to golden yellow and brownish red. Another class bears small flowers, showy in beds, useful for cutting. Bloom early and continue for months.

**Large-flowered, Single:** Lenticularis, very tall; Macrophyllus giganteus large leaves and large flowers; Uniflorus giganteus; Tall Russian; Primrose-colored; Peruviana, compact; Bismarckianus very large flowers; mixed.

**Large-flowered Red, new;** shades of brownish red, mostly appearing as a broad zone; some almost all red. Reselected, 10 cts. common sorts 5 cts. Golden Nigger black-eye; Sulphur Giant, black center.

**Large-flowered, Double:** Globosus festulosa, very double, golden flowers; Giganteus plenissimus, double; Oculatus viridus, very double, center green; Nanus fl. pl. dwarf double; Nanus folis variegatus, foliage blotched white; Multiflorus fl. pl. many flowered; Dwarf Double Quilled.

**Miniature Sunflower, Star-shaped Double, twisted petals;** Single, golden yellow, black eye; Cucumerifolius, yellow; Angryophyllus; Compact Perkee; Helios, golden-Purpureus, brownish red; all mixed. Complete mixture of Large and Small, Single and Double.

## Hibiscus--Mallow.

Showy annuals and perennials. Flowers large, of various colors, and when once started the plants take care of themselves, as the annuals re-seed, and the perennials are hardy.

**Africanus grandiflorus,** hardy annual; flowers large, yellow with dark center; re-seeds; likes a sunny place.

**Manihot Sunset,** plants 5 feet high, of pyramidal form, bearing golden flowers, dark eye; often six inches across. Start early and transplant. Makes a fine pot plant.

**Manihot laciniatus,** a variety with deeply-cut foliage and large flowers. The above sorts mixed.

**Hebenstreitia comosa,** African Mignonette, a foot high, branch; spikes of white fragrant flowers. Once started it will retain its place by self-sown seeds.

**Hunnemannia,** the Mexican Poppy, two feet high; flowers cup-like, orange, very handsome. Sow early in a warm sunny bed.

**Ice Plant,** see Mesembryanthemum crystallinum.

**Impatiens glandulifera,** Red, White, Mixed. Six feet high, a showy annual.

**Jonopsidium acaule,** Diamond Flower; a neat little carpet plant; flowers bright violet, in profusion; pretty for carpeting beneath pot plants.

## Lavatera Trimestris.

Beautiful Annuals. Dense, Profuse-blooming Plants. Large, Fine Flowers.



Lavatera trimestris deserves to be popular. Plants start readily from seeds, soon begin to bloom, and are a mass of flowers till after frost; grow three feet high; flowers are like small Hollyhocks, White, Red and Rose. Elegant for beds. Colors separate or mixed.

**Kaulfussia amelloides,** hardy annual composites with Blue, Crimson and Rose flowers; very pretty. Separate or mixed.

**Kenilworth Ivy, Linaria cymbalaria,** a handsome basket and carpet plant for dense shade.

**Kochia tricophylla, Summer Cypress;** dense fine foliage annual two feet high; green in summer, red in autumn; fine for a low hedge.

**Lasthenia Californica,** a composite annual a foot high, with bright yellow flowers an inch across.

**Layia, annuals a foot high; flowers Daisy-like,** yellow with white margin, also white, and mixed; showy in beds and useful for cutting.

**Leptosiphon, little annuals covered with a profusion of charming White, Rose, Carmine, Scarlet and Lilac flowers.** Hybrids are especially beautiful. Mixed.

**Leptosyne, composite annuals blooming quickly;** handsome in beds and fine for cutting.

**Leucanthemum, Ox-eye Daisy.** The Improved kinds have large, handsome flowers, showy in the garden and excellent for cutting. They are hardy perennials, lasting for years, and bloom most of the season.

**Litmanthes Douglasii,** a prostrate hardy annual, producing a great abundance of yellow, white-tipped flowers; likes moist, rich soil.

**Linaria, elegant plants mostly growing a foot high, the flowers Snapdragon-like, on long spikes;** colors white, purple, yellow, orange, carmine and violet. Aparinoides Golden Gem, in fine spikes; Bivartita splendens, dark violet; also white, yellow, striped and mixed; Marocana hybrida-excelsior, mixed; Reticulata aurea carmine, aurea-purpurea and mixed; Cymbalaria globosa, dwarf, globular, for beds and pots; Cymbalaria white, and Cymbalaria lilac, both for baskets and carpeting beds.

**Linum Grandiflorum,** graceful annuals a foot high, exceedingly showy in beds or groups; Rubrum red and Roseum rose, Coerulea blue, also both mixed.

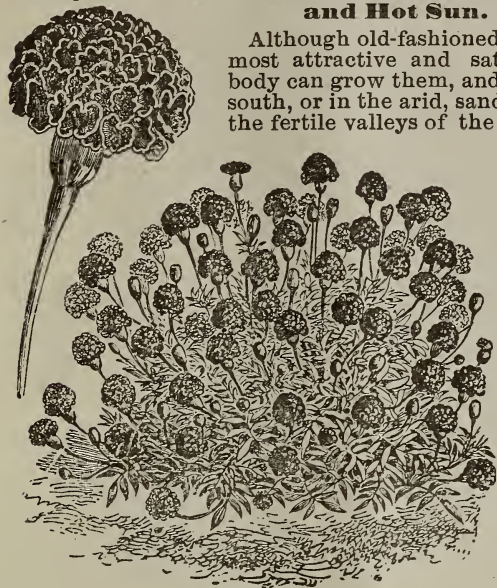
**Lotus Jacobaeus,** two feet high; flowers Pea-shaped, black-purple, in clusters.

**Lupinus, Showy annuals from a foot to three feet high; flowers Pea-shape in up-right spikes;** Colors blue, white, pink, purple, variegated. Affinis deep blue; Cruickshanki hybrida blue shaded white, yellow and purple; Hartwegii rose, blue, mixed; Hirsutus blue, rose, white, mixed; Hybridus Atrococcineus, dark scarlet; Luteus Romulus, yellow, large; Luteus albus, white; Nanus, dwarf, blue, scarlet, rose, white, mixed; Subcarnosus, azure blue, fine. All sorts mixed.

## Marigolds in Variety.

**Easily Grown. Continuous-Blooming. Endure Drought and Hot Sun. Showy in Beds.**

Although old-fashioned, Marigolds are among the most attractive and satisfactory of annuals, anybody can grow them, and they grow as well at the south, or in the arid, sandy plains of the west as in the fertile valleys of the east.



DOUBLE FRENCH MARIGOLD.



DOUBLE AFRICAN MARIGOLD.

No garden is complete without a bed of the beautiful improved Marigolds here offered. Be sure to include a few packets in your order. *Tagetes S. Pumila* is a glorious edging plant.

**Double African**, Tall, Orange, Sulphur, Lemon, Eldorado Quilled, *Fistulosa sulphurea*, separate or mixed.

**Double African**, Dwarf, Orange, Sulphur, Quilled Orange Quilled Sulphur separate or all mixed.

**Double French**, Tall, Orange, Gold-striped, Dark Brown, Quilled Brown, Quilled Yellow, separate or mixed.

**Double French**, Dwarf, Brown, Orange, Quilled Orange, Gold-striped, Spotted, Yellow, Golden Ball, Aurora, sulphur, separate or all mixed.

**French Lilliput**, Small Marigolds, rare and pretty, Brown with gold margin, Spotted, Single Yellow, Margined, separate or mixed.

**French**, Single, Dwarf, fine for beds or edgings. Legion of honor, Gold-margined, Silver King, Striped, mxd.

**Tagetes Signata Pumila**, a dwarf, dense plant a foot high, covered with a mass of golden bloom in autumn. Fine for beds or edgings. *Tagetes Lucida*, small golden flowers in tufts, deliciously scented; everblooming, fine.

## Lobelia.

**Elegant Vase and Edging Plants. Dense, Profuse-blooming, Everblooming.**

The annual Lobelias are superb free-blooming plants, seedlings beginning to bloom early, continuing in bloom throughout the season. They are beautiful as edgings, for forming a blue carpet, for pots, baskets and vases. If started in mid-summer they bloom well in winter. I offer a fine collection, and my mixture is unsurpassed. All of my seeds bear a high test.



**Erinus**. Barnards Perpetual, blue, white eye, fine for baskets and pots; White Lady, white; Paxtoniana, blue and white; Speciosa, dark blue, dark foliage; Kermesina, crimson; Prima Donna, velvety maroon; Pearl, white with blue edge; Crystal Palace, dark blue; separate or mixed.

**Compacta**. Duplex Rosea, rose; Duplex dwarf, mixed; Golden Queen, yellow foliage; Bedding Queen, dark blue with clear white eye; Royal Purple, blue, white eye; Snowball, white, fine; Kermesina oculata, crimson with white eye; White Gem, pure white; Belle de Moray, new fine; Compact sorts separate or mixed.

**Ramosa**. Large-flowered, showy, handsome species showing several fine colors. Rose, White, Celestial Blue. Separate or mixed.

**New Hybrids**. Pendula Amanda, rosy lilac passing to amaranth red, white eye; Miranda, bright rosy purple, clear white eye; Hamburgia, sky blue with white eye, very fine; Sapphire, large, deep blue, with pure white eye. Hybrids separate or mixed. Complete Mixture of all varieties.

**Lychnis**. Beautiful perennials, blooming well the first season; flowers bright and showy, in clusters; easily raised from seeds; make a charming bed. *Alpina*, very dwarf, small rose flowers, pretty; *Chalcedonica*, one foot, shows clusters of bloom, white, dazzling scarlet, mixed; *Haageana hybrida*, crimson, mixed; *Fulgens*, rich scarlet. The sorts separate or in Complete mixture.

Mr. Park:—Your *Lychnis* were all beautiful, but I was especially pleased with *Chalcedonica* and *Haageana*, in colors white, pink and scarlet.—Rev. Fuller, Greenwich Village, Mass., Sept. 24, 1916.

**Malcolmia littorea**, a hardy annual a foot high bearing large, delicate rosy lilac flowers.

**Malope grandiflora**, the large-flowered Mallow; plants a foot high, branching; flowers like a small Hollyhock, Red, White, Rose, Mixed.

**Malva**, showy and easily grown garden flowers. *Malva Crispa* grows from six to 8 feet high, a single stalk, thickly set with crisped foliage; lasts till winter. *Malva Mauritiana* grows six feet tall, bearing dark rose or purple flowers. *Malva Moschata* is a perennial blooming the first season; plants 18 inches high, covered with clusters of showy, fragrant white and pink flowers. Sep. or mxd.

**Manulea violacea**, a plant from the Cape of Good Hope; a foot high; bears racemes of violet flowers.

**Martynia**, vigorous, viscid plants two feet high, branching and sprawling; flowers Gloxinia-shaped, in racemes, showy and handsome, succeeded by curious curved seed-pods; grow and bloom all summer. Fragrans, purplish, with yellow throat, fragrant; Lutea, yellow; Proboseida, lavender, spotted; separate or mixed.

**Matricaria**, Feverfew, very profuse, constant-blooming perennials; flowers double, pure white and golden yellow, very showy and beautiful. *Parthenium Capensis*, tall double, also dwarf double, both white; *Eximia* double white; *Eximia Pyramidalis*; *Eximia Dwarf* Golden Ball, and Snowball. All sorts separate or mixed.

**Matthiola Bicornis**, Evening Stock, a foot high; purplish red, sweet-scented flowers in the evening.

**Meconopsis Cambrica fl. pl.**, the Double Welsh Poppy; a foot high; large yellow flowers; hardy biennial, blooming first season.

## Mimulus, Finest Varieties.

Beautiful as Orchids. Easily Grown. Profuse-blooming, Ever-blooming. Fine for Pots or Beds.



MIMULUS TIGRINUS, QUEEN'S PRIZE.

**Mesembrianthemum**, succulent, prostrate plants bearing delicate, showy flowers; like a sunny place, and are suitable for walls, rockeries or terraces. *Cordifolium variegatum* lovely green and white foliage; *Pomeridianum*, yellow flowers; *Tricolor*, dwarf, White, Pink, or mixed; *Crystallinum*, the Ice Plant, stems and foliage covered with icy protuberances. Separate or mixd.

**Mignonette**, *Reseda odorata*, the well-known plants of easy culture; They start readily from seeds and begin to bloom early, continuing throughout the summer; flowers of various colors, in terminal racemes, deliciously scented, and fine for cutting. I have the best improved sorts: *Aurea gigantea*, Golden Queen, *Grandiflora ameliorata*, Bismarck, Crimson Queen, *Gigantea pyramidalis*, Golden Machet, Gabriele, Goliath, Machet Bright Red, Miles Spiral, *Pumila erecta*, for pots; Dwarf Compact, for pots; Parson's White, Rubin, White Pearl, Victoria Red. Separate or mixed. Common Sweet for beds or bee pasture, 15 cents per ounce.

Mr. Park:—For three years I have had a bed of your Mignonette. The plants bloom continuously, and a spray of the flowers will perfume the house. A mixed packet of the choice kinds will yield flowers of several colors. They will repay the time spent in raising them.—Mrs. E. S. Lusk, Independence, Ia., Nov. 10, 1916.



**Mirabilis**, Four-o'clock. Very easily grown flowers of great beauty. Some are tall, three feet, others dwarf, or a foot high. All are fine for beds. The flowers are showy, of many colors, fragrant, and profusely borne. **Tall**; White Yellow-striped, Red-striped, Yellow, Yellow striped red, Quadricolor, Rose, Red separate or mixed. **Dwarf**, variegated foliage, mixed. Tall and Dwarf mixed.

**Moluccella Spinosa**, grows two feet high, curious flowers.

These are lovely, free-blooming plants, the flowers of some being as fine as Orchids. They are especially adapted for pots, baskets, and beds in shady, protected places. They are easily grown from seeds.

**Large-flowered Hybrids**; Tigered and Spotted; Queen's Prize; Fire King; Nanus Roseus, dwarf; Imperialis; Grandiflorus Duplex; Albus Duplex. Separate or in complete mixture.

**Various Species**: *Cardinalis grandiflorus*, Orange and Rose, also mixed; Cupreus, copper; Bismarck, carmine; Moschatus, Musk plant; Moschatus Compactus, Dwarf; *Quinquevulnus Maximus*, and Q. Duplex. Species mixed. Species and Hybrids mixed.

Mr. Park:—Each year brings to the flower lover some surprise. How many have raised Mimulus Tigrinus, the Queen's Prize? From a Park's packet last year I had many plants. They bloomed very finely, and what was my surprise but to find them alive when spring opened. They were covered loosely with buckwheat straw, once it was 20° below zero. The plant looks so fragile and tender, that it seems a mystery that it could withstand the cold. I shall try more varieties of it another season.—Mrs. G. W. Bain, Nassau, N. Y., May 22, 1916.

## Myosotis, Forget-me-not.

The Forget-me-not is one of the chaste, pretty little flowers that everybody admires and loves. The plants are dense, low, very free-blooming; and the exquisite, delicate flowers, bright and pleasing, are produced upon scorpioid racemes, opening for many weeks. A bed in bloom is beautiful, and when grown in pots the blooming plants are charming. Sow in early autumn for spring flowers, and in spring for autumn flowers. Everyone who has a garden should grow the Forget-me-not. It deserves to be generally cultivated.



**Alpestris grandiflora**, White, Rose, Indigo Blue, mixed. **Elegantissima**, White, Rose, Blue, mixed.

**Grandiflora**, Royal Blue Splendid.

**Victoria compacta alba**, fine white.

**Victoria**, White, Rose, Blue and mixed.

**Stricta grandiflora**, mixed. **Oblongata** perfection, Blue

**Dissitiflora**, Blue White, and mixed.

**Palustris Semperflorens**, Blue, White and mixed.

Complete mixture of all varieties.

Mr. Park:—Few spring flowers are more admired than your lovely Forget-me-nots, which are especially effective when grown in masses in borders and beds with bulbs or Pansies. They are perennials, and hardy with slight protection. Mrs. Tredwell, Plymouth, Wis., Nov. 28, 1916.

**Myosotidum Nobile**, the New Zealand Giant Forget-me-not; 18 inches high, flowers deep blue, edged white.

## Nemophila,

very pretty hardy annuals. Sown in autumn the little plants bloom early in spring, making a fine display as an edging or carpet plant. Brown with white margin, Insignis white, Sky Blue, Maculata spotted, Marginata margined, Holborn Blue Bell. Separate or mixed.

**Nicandra physaloides**, the Shoo-fly Plant; 5 feet high; large blue and white bell-shaped flowers.



## Nicotiana in Splendid Variety.

Charming Plants for Beds and Pots. Masses of Bloom Continually, Exquisitely Fragrant. Easily Grown.



I wish to call special attention to the splendid varieties of Nicotiana I offer. The plants come into bloom quickly from seeds, stool out, and become a mass of showy flowers, pleasing all by their exquisite beauty and their delicious fragrance. They like sun and rich soil, and have no enemies. They are hardly surpassed as bedding plants, and bloom well in pots in winter.

*Affinis*, night-blooming, very fragrant; Hybridus grandiflorus large-flowered, fragrant, all colors, mixed.

*Acutifolia*, day-blooming Star-flowers; not fragrant.

*Macrophylla* gigantea, large-leaved; red bloom.

*Atropurpurea*, large-flowered, purple.

*Colossea*, giant leaves; fine for a group.

*Sylvestris*, pure white; sweet-scented.

*Sanderw*, day-blooming, two feet high, splendid for beds; very free-blooming, the flowers in many fine colors, some exquisitely variegated. Varieties: Rose, Blood Red, White, Flesh, Purple Violet, Redish Violet, separate or in complete mixture. This sort is everblooming, and highly recommended for summer beds and winter pots in a sunny exposure.

### Nasturtium, Tom Thumb.

This is a splendid annual for beds, borders and window boxes. The foliage is dense, clean and handsome, and the flowers large, delicate, rich-colored and fragrant, showy for cutting. Plants are easily grown, a foot high, bloom freely and continuously, and the large, showy flowers are on long stems, held well above the foliage. I have the following splendid sorts to offer separately or in special mixture: Pearl White, Scarlet, Scarlet with golden foliage, Salmon Red, Scarlet striped, Yellow and scarlet, Chameleon variegated, Deep Crimson, Terra-cotta, Rose.



Spotted, Lady Bird, Dark Scarlet, Cattel's Brown-red, Golden King. Mixed, or to color, in quantity, 12 cts. per ounce, ¼ pound 40 cents, 1 pound \$1.50.

*Nierembergia*, dense, slender-stemmed plants that become a cloud of lovely cupped flowers of pale blue veined purple. Sow early for summer-blooming. If lifted and potted in autumn the plants are a mass of flowers in the window in spring. Gracilis and Frutescens, separate or mixed.

*Nigella*, Love in a Mist, or Devil in a Bush.

One name is as appropriate as another, but the plants are really charming annuals, beautiful in flower and foliage, re-seeding and taking care of themselves after once sown. Damascena fl. pl. double, blue and white, also Miss Jeky'll, deep blue, separate or mixed; Diversifolia, blue; Damascena nana, dwarf, double, white, blue, mixed; Hispanica, Blue, White, Purple, mixed. Mixture of all varieties.

*Nycterinia selaginoides*, a low, graceful annual bearing clusters of pretty, lilac, fragrant flowers.

### Nemesia, Superb Sorts.

Among the beautiful little annuals that deserve to be better known are the newer Nemesias. They are charming, rival Phloxes in appearance and usefulness, and are a real acquisition to our summer flowers. Plants grow a foot high, start readily from seeds, and bloom freely and constantly all season. Be sure to give them a trial. Compacta White Gem, also Blue Gem, Lustra, and New Triumph; Tricolor, white, rose and Lilac; Versicolor, variegated; Strumosa Scarlet, Orange, Carmine, Spotted and mixed; Strumosa Dwarf Compact pure white, and Grandiflora, mixed; Strumosa Tigred mixed. Special mixture of all varieties.



*Nolana*, charming prostrate annuals, suitable for baskets, bracket pots and edgings; flowers like a small Morning Glory. Grandiflora Blue, Lanceolata lance-leaved, violet also blue, white, violet mixed.

*Obeliscaria pulcherrima*, a lovely, showy annual with column-like centre, and drooping rays, brown with gold margin; much like Rudbeckia.

*Enothera*, Evening Primrose, Attractive Garden flowers of great beauty. Acaulis, very dwarf, white; Lamarckiana, 3 feet high flowers yellow, 4 inches across; Rosea Mexicana, dwarf, rose. The following are perennials: Speciosa, fragrant, fine; Fraseri, golden, floriferous; Youngii, golden yellow, large. Special mixture.

*Oxalis*, low plants with clover-like leaves and pretty flowers in clusters. Rosea, Rosea alba; Tropaeoloides, brown foliage, very dwarf; Valdiviana, yellow, fragrant, fine. Special mixture of all sorts.

*Perilla*, Pretty foliage plants not unlike dark-leaved Coleus; hardy annuals a foot high, fine for beds or borders. Macrophylla Nigricans, large-leaved, very dark brown; Macrophylla crispa, dwarf, large-leaved, curled; Atropurpurea laciniatus, dark, cut-leaved; Microphylla compacta, dwarf, small-leaved. All sorts mixed.

## **Pansy, Improved Large-flowered.**

**Splendid for Beds. Bloom at all seasons. Plants Hardy, very Free-blooming. Rich-colored, Fragrant, Fine for Cutting.**



The Pansy is one of the most popular of flowers. Started from seeds in the spring the plants bloom during summer and autumn; started late in summer they make a varied and glorious bed in early spring, rivalling the early bulbous flowers. The seeds I offer are of the finest Trimardeau or large-flowered strain, and will give the best results. I supply them separately or in complete special mixture. There are no better Pansies than those I offer, no matter what may be the price. You cannot err in buying of me. These Pansies are grown by a first-class French Specialist.



IMPROVED LANCASTER PANSY, NE PLUS ULTRA.

- Adonis, light blue, beautiful.
- Atropurpurea, royal purple.
- Black Blue, very dark blue.
- Blotched and striped, splendid.
- Brilliant, fiery red, showy.
- Bronze, odd and beautiful.
- Candidissima, pure white.
- Canary Bird, yellow, blotched.
- Cliveden, fine for beds, mixed.
- Coal Black, the darkest sort.
- Cœrulea, lovely blue.
- Coquette de Poissy, mauve.
- Crown Prince, velvety black.
- Frilled and veined, mixed.
- Golden Queen, pure yellow.
- Golden Yellow, brown eye.
- Indigo King, true indigo blue.
- King of Blacks, coal black.
- Lavender, pale blue, blotched.
- Lord Beaconsfield, purple violet, top petals white.
- Madam Perret, red, shaded white.
- Marmorata, red, marbled, splendid.
- Masterpiece, frilled petals.
- Mercury, rich purple, very fine.
- Meteor, bright brown.
- Odier, large, white ground.
- Odier Red, brown ground.
- Orchid-flowered, frilled petals. var.
- Parisian Stained, large blotched.
- Peacock rich blue rose and white.
- Prince Henry, darkest blue.
- Purple King, crimson-violet.
- Quadricolor, rich colors contrasted.
- Sky Blue, fine blue.
- Snowflake, pure white.
- Striped Giant elegantly striped.
- Trimardeau White, very fine.
- Victoria, bright blood red.
- Violet Blue, fine color.
- White, purple eye.
- Yellow, dark eye, very pretty.

Complete Special Mixture of the above fine varieties.

The above are from France as German seed can't now be obtained.

**Ne Plus Ultra.** I offer this season a very superior strain of Lancaster-grown Pansies, and size and exquisite coloring of the flowers. The strain has been wonderfully improved and advanced by careful selection, and the seeds I offer were saved from the choicest plants and flowers, removed to separate beds and given special care. Seeds of these "Lancaster" Pansies I can only offer in 10 cent packets, but they are worth every cent.

Mr. Park:—Your Ne Plus Ultra Pansies far surpass anything in Pansies I have ever tried in color, richness, variegation, texture and size of flowers, and in the substance or thickness of the petals. Each plant is loaded with the same large-sized flowers, so much so that the rows of these Pansies are very noticeable from the others.—Mrs. G. W. Bain, Nassau, N. Y.

# Park's Unrivalled Petunias.

The Best of Bedding Plants. Grown in Pots are Unexcelled for Winter-blooming. Finest Single and Double Varieties.

There is hardly a better bedding plant than the Improved Single Petunia. The plants begin blooming early in summer and bloom freely until after frost, enduring spells of wet weather, cold

and drought. Set 15 inches apart they soon become a mass of rich, showy bloom, delightful to the eye, and emitting a pleasing odor. The Giant-flowered sorts do not bloom so freely, but are fine for single specimens grown upon a trellis, or for choice pot plants. The same is true of the double-flowered sorts. The Dwarf Compact Varieties are the best for beds, and for winter-blooming in pots. As an all-around flower the Petunia is unrivalled. Everybody should grow it.

**Giant Ruffled Sorts:** Brilliant Rose, Intus Aurea, Marmorata Rosea, Gigantea, Titania, White, Veined, Violet, Veined and mixed, Superbissima Soliel d'or, Superbissima mixed. Complete mixture of all Giant sorts.

**Giant Double-flowered:** Gigantea, Marginata, Fimbriata alba, Fimbriata Maculata. Blue, Rose and White. separate or mixed. Very Large-flowering, Single, striped and mixed.

**Spreading Varieties,** fine for beds. Adonis, Belle Floite, Gen. Dodds, Howard's Star, Intus Aurea, Countess of Ellesmere, Reticulata, Illustris, Alba, Editna and Double-flowered; separate or mixed.

**Compact Varieties,** the best for beds and pots: Multiflora dwarf, striped and blotched, splendid; Snowball, pure white, very fine; Rosea; Brilliant, fiery rose. Erfordia, rose, white center, new and fine; Adonis, red, white throat; Purpurea, very double-flowered; separate or mixed.

**Compact Varieties,** the best for beds and pots: Multiflora dwarf, striped and blotched, splendid; Snowball, pure white, very fine; Rosea; Brilliant, fiery rose. Erfordia, rose, white center, new and fine; Adonis, red, white throat; Purpurea, very double-flowered; separate or mixed.



GIANT-FLOWERED.

fine purple; Stellaris, bright rose, with white star; Intense Rose; Venosa, splendid veined; Carmen Sylva, purple, white throat; Red Star, new, superb; Striata, very fine striped. Separate or mixed.

My mixture of these compact, profuse-blooming Petunias is carefully prepared, and combines all the sorts. It will surely please you. My seeds are all carefully tested and sure to grow.

**Double Small-flowered,** Azaleaflora alba, Caryophylloides, Multiflora Blotched, and all mixed.

Mr. Park: For the busy housewife no flower will so richly repay her for her time, as a bed of mixed Single Petunias. Start early in a window box and she will have flowers from early summer till it freezes hard in fall. Mrs. Dickson, Fowler, Colo.

Mr. Park: Your Petunias have proven a wonderful success here in our southland. One plant 4 1/2 ft. high, covering a circle of 13 feet around, bloomed continuously for over a year. Mrs. S. Jordan, Brazoria Co., Tex., Dec. 3, 1916.

Mr. Park: Your Petunia seeds gave great results. They were little beauties, spotted and blotched, and of lovely shades with white throats, and velvety dark. The Petunia is fine, it is always in bloom. Sarah M. Wheeler, Athol Center, Mass.



COMPACT PETUNIA.

# Phlox Drummondii.

Early and Continuous-blooming. Splendid for Beds, Porch-boxes, and Pots. Very Free-blooming, Showy and Beautiful.

Phlox Drummondii is one of the most desirable of annuals. Plants grow a foot high, branch freely, and bloom continuously from early summer. The fragrant flowers are of many shapes, colors and variations, and if the plants are set eight inches apart in a bed they make a glorious display all the season. If you have but a half dozen annuals one of them should be Phlox Drummondii.

**Large-flowered:** White, White with purple eye, Scarlet, Bright Rose, Chamois, Light Yellow, Pink with white eye, Rose with white eye, Stellata splendens, Violet, Scarlet Meteor, Cream, Brilliant scarlet, Rose with yellow center, Cinnabar scarlet, Purple, Crimson with white center, Blood red with white center, Three-colored, Vermilion Red, separate or mixed. These varieties are all unsurpassed for beds.

Fimbriata fringed and Cuspidata cusped, mixed. Semi-double in fine mixture.

**Hortensiflora,** very fine, free-blooming varieties in complete mixture.

**Nana Compacta,** new dwarf, compact-growing sorts, excellent for beds and pots; Apricot, White with eye, White, Blue with star, Dark Scarlet, Marbled, Rose with purple center, Rosy Chamois, Fiery Red, Crimson striped, Violet with white center, Crimson with white center, Purple, Salmon Pink with white center, separate or mixed.

Complete mixture of all varieties, tall and dwarf, single and double, carefully prepared.



IMPROVED PHLOX DRUMMONDII.

Mr. Park:--The Annual Phloxes from your seeds are lovely, and stand a drought so well! I had all colors, some yellow, a new color to me. Mrs. W.L. Taylor, Denmark, Nebr.

Mr. Park:--I am delighted with Phlox Drummondii. The plants start readily from seeds, and show a great variety of colors. Anna W. Pratt, Watonwan Co., Minn., Nov. 17, 1916.

## Portulaca, Single and Double.

Excellent for Beds. Plants always in Bloom. Flowers Showy and Freely Produced.



Portulaca is a hardy annual of rare beauty. The plants are succulent, low, branching, spreading, with green or rosy stems and foliage, and bearing in great abundance throughout the season large, bright flowers, single and double in form, and of the richest colors, shades of red, white and gold, some eyed, some distinctly variegated. My seeds of both single and double are of the best quality, and my mixtures are unsurpassed. Portulaca Parana is the new large-flowered variety. All Portulacas like a sandy soil and a sunny situation. They are among our best annuals.

**Single-flowered:** White, White striped red, White with red center, Golden Yellow, Bronze, Carmine striped, Flesh color, Crimson, Purplish red, Light yellow, Yellow Scarlet Orange, Rose Large-flowering Parana, also mxd  
**Double-flowered:** White, Rose striped, Golden yellow, Scarlet, Yellow striped, Crimson, Lemon Rose mxd. Complete mixture, Single and Double.

Mr. Park: Portulaca never fails in the hottest, driest seasons. I sowed seeds last spring and was more than surprised when the plants bloomed to find not only red, the common color, but pink, orange, yellow and bluish, many mottled and variegated, and different shades on the same plant. I was greatly pleased, and will gladly recommend them. Mrs. Geo. Fisher, Wilmore, Kans., Nov. 9, 1916.

## Poppies in Splendid Varieties.

The Most Showy and Beautiful of Annuals. Flowers Large, Single and Double, Richest Colors. Of Easiest Culture.

The annual Poppies are very showy and beautiful garden flowers, and also excellent for cutting for room decoration. The seeds should be sown in September or very early in spring, and the plants thinned till they stand eight inches apart. If crowded they will not do well. I offer a fine lot of the choicest Poppies in cultivation, and heartily recommend them to my friends.



**Carnation-flowered fl. pl., Tall,** a splendid large Poppy, 2 feet tall, bearing huge double fluffly flowers in these colors: White, Light purple, Light Yellow, Red and White striped, Pomegranate red, Purple, Rose, Scarlet, Ash, Dark Lilac, Dark Violet, Purple and brown, Rose and white. Separate or mixed.

**Carnation-flowered, fl. pl., Dwarf:** Carmine-rose, White, White-edged Scarlet, Lilac, Bright Rose and white, Rose, Rose and crimson, White striped red, White and purple, Black, Steel Blue, Incarnate, Cinnabar. Mxd.

**Peony-flowered fl. pl., Tall, Double;** Superb, large flowered varieties; White, Cream, Lilac blotched, Light lilac, Lilac rose, Brilliant rose, Salmon Pink, Bright rose, Coccineal white-blotched, Coccineal purple-blotched, Cherry, Vermilion, Cardinal, Striped, Carmine, Currant, Deep Purple, Pansy Violet, Lilac and scarlet, Brick-red, Light mordore, Maw Gray, separate or mixed.

**Peony-flowered, Fringed, Double:** White with lilac shine, Cream yellow, Mauve rose, Cherry red, Vermilion red, Currant red, Heliotrope, Plum Violet, Mixed.

**Peony-flowered Dwarf, Double:** Black, Lilac, Rose, Salmon rose, Scarlet and white, White and light purple, separate or mixed.

**Chinese Double Dwarf:** White, Slate, Bright rose Brick red, separate or mixed.

**Cardinal Hybrid Double** Bright scarlet: Umbrosum Single, Umbrosum Double, bright crimson; Admiral Single white with scarlet margin; Danebrog, scarlet with white blotch; Mephisto, scarlet with black blotch; Mephisto rose; Glaucum, the Tulip-flowered Poppy; Murselli fl. pl., mixed; Miss Sherwood; King Edward, Dainty Lady, Hooker.

**Ranunculus-flowered,** Double, White, Slate, Scarlet, Scarlet with white edge, Rose Dark red, Red with white edge, separate or mixed. These Poppies grow a foot high, are profuse blooming, and very beautiful.

**Rheas** or Improved Shirley, Dwarf, single with light-colored stamens, very attractive. Colors: White, Carmine, Rose, Salmon shades, separate or mixed. Also Tall Shirley Poppy in splendid mixture.

Complete Mixture of all the above splendid Poppies, single and double, all the fine shades and colors.

Mr. Park: This year we had two large beds of your Poppies, single and double, and I thought they were beautiful. The improved varieties surpass the older ones, and should be popular. Norman W. Dosch, York Co., Pa.

**Pentstemon Grandiflorus.** These are large-flowered, improved varieties of the species Gentianoides. The plants bloom the first season, and for several years, being hardy perennials. The hybrids I offer are from France, and are exceedingly handsome. Albus, new, beautiful; Erectus, very fine, rare; Grandiflorus mixed, the finest strain, very dark flowers of many choice colors. Grandiflorus Gloxinoides, Gloxinia-like, spotted flowers of great beauty, mixed. Complete mixture of all sorts.

**Phacelia,** pretty hardy annuals with clusters of blue flowers throughout summer. Congesta, blue; Campanularia, large, dark blue bell flowers; Bipinnatifida, purplish blue; Parryi, large, blue; Tanacetifolia, tansyleaved, azure flowers. All sorts mixed.

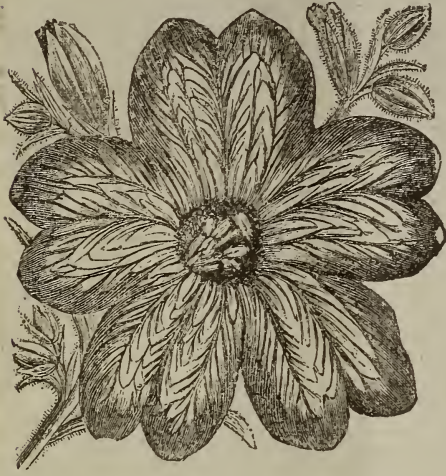
**Physalis, Ground Cherry.** Very attractive inflated capsules with edible fruit; Franchetti, Chinese Lantern Plant, red capsules; Edulis, golden capsules, sweet fruits. Both sorts mixed.

**Polygonum,** hardy annuals of tree-like form, branching and bearing graceful drooping flower spikes all summer. Tall Red, Tall White, Tall variegated, separate or mixed.

**Ranunculus Asiaticus superbissimus,** a double-flowered perennial blooming well the first season; flowers large and showy and of many rich colors; like moist, sandy soil and partial shade. Easily grown from seeds. Start them early and transplant.

# Salpiglossis, New Gloxinoides.

Richest-flowered of Annuals. Easily grown, and Blooms Freely and Continuously all the Season. A "Must Have".



The new strain of Salpiglossis I offer produces Gloxinia-like flowers of surpassing beauty. The plants are strong and compact in growth, and bear very large, lovely rich-colored showy flowers in great abundance. The plants grow from two to three feet high, and become a waving mass of charming bloom, the exquisite penciling of the velvety flowers beautiful beyond description. The plants are easily grown from seeds, and bloom continuously throughout summer and autumn. I offer these splendid varieties separately or mixed, as follows:

Brilliant Crimson, Light Blue, Chamois, Rosea, Brown and gold, Blue and gold, Black, Yellow with white border, Magenta with yellow throat, Rose-chamois with carmine center, Carmine red striped yellow, Purple red striped yellow Violet. The varieties separate or carefully mixed. Also **Dwarf** varieties, large-flowered, in fine mixture.

Salpiglossis.—One of the finest of half hardy annuals. It bears funnel-shaped blossoms with dark veins on a ground varying from white to crimson, yellow, orange or purple and intermediate shades. A mixed packet of seeds will yield a fine display lasting from summer till late autumn.—English Flower Garden, London, England.

## Salvia.

Salvia splendens is the

large-flowered Scarlet Sage, so popular as a bedding plant. The Improved varieties are much superior to the older kinds, and are among the brightest and most beautiful of flowers for beds or borders. I offer the following:

**Splendens:** Grandiflora, Bouffre, Fireball, Violet, separate or mixed.

**Other Sorts:** Carduacea lavender blue, Farinacea blue, Patens rich blue, Horminum Red-top, also Purple-top and mixed; Coccinea



splendens, Scarlet, also White, Rose and Mixed; Coccinea nana compacta; separate or mixed.

Complete special mixture of all Salvias.

**Ricinus, Castor-oil Bean,** elegant semi-tropical plants, the leaves of large size and graceful form; grow from 3 to 15 feet high in one season. In the south the plants are perennial, and assume the proportions of a tree. Arboreus, 15 feet; Gibsoni, 3 feet, dark foliage; Cambodgensis, dark; Sanguineus, 8 feet, red stalk; Zanzibariensis, Gray, Purple, Red, Green. Separate or all sorts mixd.

**Ricotia Lunaria,** a very pretty little Alpine annual, fine for edgings and rockeries; flowers, lilac rose, freely produced.

**Rudbeckia,** showy, autumn-blooming plants with a profusion of golden flowers. Bicolor Superba Semi-plena; Amplexicaulis, Newmanii, Sullivanti. Bicolor or Superba has gold and brown flowers, sometimes semi-double; the others are golden.

## Scabiosa.

The Improved annual varieties of Double Scabiosa are among the most desirable of garden flowers. The plants become bushy and dense, reach the height of three feet, and bear large, very double, exquisitely colored flowers on long, strong stems. Seeds may be sown in spring or early autumn, and in either case the results are very satisfactory. The Dwarf varieties are fine for pots as well as bed, growing a foot high, and blooming freely. They are excellent as window plants, for summer or winter blooming.



**Improved Tall:** White, Rose, White and blue, Sulphur, Pompadour, Flesh, Rose, Carmine, Brown red, Purple, Purple and white, Blue, Cherry and white, Lilac, Black-purple, Violet-red, Violet. Separate or mixed.

**Improved Dwarf:** White, Sky blue, Carmine, Flesh, Cherry, Fiery crimson, Lilac, Purple, Rose, Blue. Mixed.

**Sanvitalia procumbens, fl. pl.,** low, spreading annual with double golden flowers an inch across; likes sun, will do well in sandy soil, blooms continuously.

**Schizopetalon Walkeri,** a pretty annual from Chili, a foot high; flowers fringed, and fragrant.

**Senecio, Double, Dwarf,** very showy, beautiful annuals growing 8 inches high, and blooming freely; excellent for beds or borders. My seeds are saved only from the elegant double sorts, and will give the best results. White, Lilac, Copper-color, Violet. Separate or mixd.

## Stock, Ten Weeks.

**A Perfect Annual. Easily Grown, Blooms Constantly. Flowers very Double, Fragrant, Rich-colored and Beautiful.**

Here is an annual flower allied to the well-known Wall Flower that has all the elements of a first-class plant, and can be grown in garden beds or window pots. It has no enemies, will grow in any rich soil, bears its flowers in long spikes, and blooms freely until after frost. The flowers are like little Roses, exquisite in texture, deliciously scented, and very showy and beautiful. Start the plants in a hot-bed or window box early, and transplant to a sunny bed as soon as danger from frost is past; shade and water for a few days, so that the plants will not become stunted. If possible, transplant during damp, cloudy weather. My seeds are of the best quality, having been saved from selected plants grown in pots. My mixtures are unsurpassed.

**Mammoth Hollyhock-Flowered:** One of the finest Ten Weeks Stocks for the garden. The plants grow three feet high and bloom in long Hollyhock-like wreaths. The seeds I supply test 100 per cent. White, Light Blue, Crimson, Brilliant Blood Red, Purple Brown, Black Brown, Rose, Dark Blue. Separate or mixed.

**Early-flowering Dwarf:** of dwarf habit, each plant becoming a little tree of bright fragrant "roses". White, Chamois, Brick Red, Dark Violet, Chestnut Brown, Apple Blossom, Carmine, Blood Red, Brown Violet, Black Brown, Rose, Dark Crimson, Dark Carmine, Ash Gray, Red Brown, Sulphur Yellow. Sep. or mixd.

**Perpetual Perfection:** a splendid race, the plants growing two feet tall branched, making a fine display in a bed. Apple Blossom, Blood Red, Flesh-color, Golden Chamois, Brilliant Rose, Brilliant Lilac, Light Blue. Separate or mixed.

**Large-flowering French,** a fine strain produced in France; flowers large, very double and beautiful. Sulphur Yellow Flesh, Carmine, Light Violet, Bright Red, Salmon Rose, Reddish Brown, Violet, Summer Excelsior White, Princess Alice White. Separate or mixed.

**Giant of Nice,** new and very fine, early-flowering. White shaded Carmine, Flesh Pink, Rosy Lilac, Carmine Rose, Canary Yellow, Mont Blanc White. Mixed.

**Other Sorts:** Wall-flower Leaved, mixed; Dwarf Bouquet, mixed; Victoria Bouquet, mixed; Triumph, brilliant crimson; Pyramidal, light blue; Dresden Perpetual, crimson and carmine; Princess May, primrose yellow; Princess Alice, white. Complete Mixture of all varieties, finest quality, carefully prepared.



## Schizanthus.

A lovely annual often called Butterfly flower because of its prettily marked fly-like flowers borne on little stems. The plants grow a foot or more high, blooming profusely all the season, whether grown in beds or pots. Three or four plants set in a five-inch pot in fall will bloom during winter. The Hybrids of Grandiflorus with big flowers of various colors, are recommended for out-door.



The new S. Wisetonensis is considered the finest for pots; but all are beautiful and of easy culture; Grahami, large-flowered, White, Carmine, Rose; Papilionaceus, mixed; Pinnatus hybridus nanus, dwarf, mixed; Grandiflorus, mixed; Pinnatus Rose, Blue, Spotted, also mixed; Retusus Carmine and Yellow, White, Rose, mixed; Trimaculatus, Carmine with yellow spots, also albus; Hybridus Grandiflorus mixed; Wisetonensis. Separate or mixd. Complete Splendid Mixture of all varieties.

**Saponaria Calabrica,** trailing plants that branch and become a sheet of lovely flowers; White, Rose, Scarlet, also mixed. Also Vaccaria or Paniculata rosea.

**Shortia Californica,** a dense little annual six inches high; flowers daisy-like, yellow with rich orange center, very pretty.

**Silene,** very showy, easily grown hardy plants useful for beds and edgings; flowers bright, in clusters, very handsome. Asterias grandiflora, perennial, crimson, very attractive; Armeria, a fine annual a foot high, known as Catchfly, Red and White mixed; Dichotoma, honey plant; Fortanel, large, finely fringed flowers, shades of Rose mixed; Maritima, a green carpet spangled with pink flowers; Pendula, dwarf, compact, splendid, profuse-blooming annuals for beds, borders or edgings, sow in fall or spring, flowers very double, Yellow, Flesh, Carmine, Light Violet. Separate or mixed.

**Sphegogyne speciosa,** a pretty annual a foot high, with Daisy-like flowers shaded yellow and white. Aurea, Sulphurea, Anthemoidee, separate or mixed.

**Solanum.** The Solanums I offer are mostly annuals, and bloom and perfect their fruit the first season; some are valuable for foliage, some for flowers, and others for their pretty colored fruits. Ciliatum, red fruits, 2 feet; Giganteum, sub-tropical foliage, blue flowers, red fruits, 6 feet; Marginatum, white-edged foliage, purple flowers, 4 feet; Racemigerum, red fruit in currant-like clusters; Robustum, large-leaved, 4 feet; Melongena, striped fruits; Negasaki, dwarf, black fruits, edible, used as Egg-plant; Warszewiczii, a grand plant, 6 feet high, the stalks covered with strong spines, and the leaf-stem and mid-ribs with red spines, good for a group. All varieties mixed.

**Trachelium,** a much-branched plant 2 feet high, in summer covered with a profusion of small white or blue flowers in profusion. Mixed colors.

**Trachymene,** *Didiscus cœruleus*, hardy annual, foot high, lovely small blue flowers in flat umbels.

**Trifolium repens atropurpureus, the little clover mostly grown as Irish Shamrock; a hardy perennial; flowers white in heads.**

**Valerian.** The Garden Valerian is sometimes called Garden Heliotrope, on account of the heliotrope fragrance of its flowers. The plants and flowers are not unlike *Centranthus Macrocephalus*, are two feet high, with pretty, small flowers in large clusters, produced almost continuously; Red, White, Scarlet, separate or mixd.

**Venidium fugas** is a prostrate annual bearing golden flowers much like those of African Daisy; it blooms freely, and makes a fine bed or border.

**Vinca Rosea,** a beautiful evergreen plant

used in the south as a bedding plant, and at the north for pots as well as beds. The plants grow ten or twelve inches high, have handsome glossy foliage, and the flowers are abundantly produced, appearing like gems in a setting of rich green. The plants bloom continuously, and in Florida make a fine display continuous throughout the winter. White, White with eye, Rose, and Light Rose, separate or mixed. They are easily raised; set eight inches apart in the bed. In pots they are fine winter-blooming plants.



**Viscaria,** annuals of the Pink family that make a fine display massed in a bed; a foot high; flowers large, bright and showy. White, White with eye, Scarlet and rose, Blue, Rose, Cardinal, separate or mixed.



## VERBENA SUPERFINE

### Fragrant, Free-blooming, Fine for Beds and Window Boxes.

Among the garden flowers in summer and window plants in winter the choice Verbenas I offer are hardly surpassed. Seedlings begin to bloom early, and are a carpet of rich clusters until after severe frosts. They like rich soil and a sunny situation, and are very showy and beautiful the entire season. The compact varieties are preferable for pots, and they should have a sunny window to bloom freely in winter.

**Large-Flowered**, fragrant, excellent for beds: White, Scarlet, Blue, Striped, Eyed, Brilliant Scarlet, Dark Blue with white center, Magenta Red with white center, mixed.

**Mammoth-Flowered**, White, Dark Scarlet, Rose and carmine, Purple, Flery red, Dark Purple, Rose, mixed.

**Compact Varieties**, fine for either pots or beds: Pure White, Scarlet with white center, Light Yellow, Violet with white center, Blood Red with white center, Dark Blue, Striped, Coppery Scarlet, separate or mixed.

Complete Special Mixture of all the above varieties.



Mr. Park:—Verbenas are among my choice flowers, as they make such lovely beds, showing all colors, and blooming from early spring till hard freezes. They are easy to cultivate, and a bed of them is beautiful. Mrs. M.J. Richardson, Arvin, Cal., Nov. 17, 1916.

**Verbena Venosa**, a hardy perennial with pretty clusters of red and white flowers in profusion the greater part of season; showy in the garden, fine for pots. The flowers are fragrant and fine for cutting; would be popular if better known.

**Viola, Tufted Pansy**. These are beautiful Pansy-like plants much used for beds in Ireland and Scotland. They endure the sun better than Pansies. They bloom freely and continuously, and are lovely garden flowers, fragrant, rich-colored and attractive. Deep Blue, Light Blue, Perfection White, Rose Queen, Papilio spotted, New Bicolor, separate or mixed.

My Tufted Pansies are of surpassing quality.

**Vittadenia triloba**, a hardy perennial blooming abundantly in a sunny bed; the plants are slender, stool out, and become a mass of Daisy-like flowers.

**Virginia Stock**, pretty, profuse-blooming annuals a foot high, bearing a profusion of small, bright flowers during summer and autumn; started in autumn the plants are fine for window pots in winter; should be grown in masses. Red, White, Crimson King, Rose, Compact alba, and Compacta rosea. Separate or mixed. The Compact sorts are the best for pots.

**Wallflower, Extra Early Parisian**. Easily grown and blooms freely and continuously the first season; flowers in spikes, deliciously fragrant; elegant in beds, and in pots bloom well in the window in winter. Golden yellow, Yellow with green buds, Brown, Purple, separate or in splendid mixture.

**Whitlavia**, very beautiful little annuals; plants branch and bloom freely, becoming little globes a foot high, covered with lovely blue and white bells; bloom for a long time, and in a bed make a fine display.

## Zinnias, Improved Double.

Fine as Dahlias. Full-double. Rich Colors. Continuously in Bloom. Splendid for Beds.



One of the most beautiful and satisfactory of annuals. Even a child can grow it. The bushy plants bloom when small, increasing in beauty till frost. The plants revel in hot sun and do not mind drought; make a glorious bed. My seeds are unsurpassed in quality.

**Bedding Zinnias**, very double, 18 in. high, bushy: White, Sulphur, Golden Yellow, Salmon, Scarlet, Purple, Carmine, Violet, Striped; separate or mixed.

**Robust Sorts**, huge double flowers; 3 ft high: White, Striped, Flesh, Carmine, Crimson, Golden Yellow, Rose, Purple; separate or mixed.

**Lilliput**, small-flowered, double: Yellow, Lilac, mixed.

**Pigmaea or Tom Thumb**, very small, double flowers: plants a ft high: White, Scarlet, Crimson: sep. or mixd.

**Other Sorts**, Crispa, Crimson, mixed; Queen Victoria, White; Iris, Striped, Spotted, Sulphur; Giant Striped. Complete Splendid Mixture of all varieties.

Mr. Park:—From a mixed packet of Zinnias I raised 24 plants, scarcely two alike. They were of so many lovely shades! Quite a few who saw them, remarked, that "they must be Dahlias". They had such delicate coloring.—Mrs. J. E. Hinton, Cody, Nebr., Dec. 6, 1916.



## Park's Grandiflora and Spencer Sweet Peas.

Embraces the finest large-flowered varieties in cultivation. Special mixture, carefully proportioned, all colors and variegations—none better. Price, 1 lb 95 cts.,  $\frac{1}{4}$  lb 25 cts., 1 oz. 10 cts., pkt. 5 cts. See page 26.

## Everlastings and Grasses.

### EVERLASTINGS.

*Acroclinium*, lovely annuals; nodding flowers on slender stems a foot high; good for beds; cut when in the bud. Double Rose and Double White, separate or mixed.

*Ammobitum alatum*, new large-flowered, double, white; branching, two feet high, robust; cut when in bud.

*Gomphrena Globosa*, German Clover, one of the best annuals for a showy bed or winter bouquets; flowers globe-like, rich colored. Cut when fully developed. White, Flesh, Rose, Variegated, Purple, sep. or mixed.

*Nana Compacta violacea*, dwarf, fine.

*Gypsophila elegans*, a very beautiful, delicate everlasting, useful in bouquets, either green or dry; pretty in a bed; easily grown. White, Carmine, Rose, *Rosea grandiflora*.

*Muralis*, pinkish rose, fine for edgings and hanging baskets.

See Perennial for *Gypsophila panicula*, so useful in green bouquets; and *G. repens*, dwarf.

*Helichrysum Monstrosum*, a fine annual in beds, 2 ft high, one of the best for winter bouquets; flowers large, double, bright and handsome, cut when in bud. White, Yellow, Brown, Purple, Rose, Copper-red, Salmon-red, separate or mixed. Double Dwarf, fine in beds, also for drying; Fiery Red, White, Yellow, Rose, Blood-red, separate or mixed. *Bracteatum*, single, white, also mixed.

*Helipterum Sanfordii*, a lovely golden everlasting, flowers small, bright, in heads; pretty in beds; fine to mingle with dried grass.

*Rhodanthe*, a pretty annual 1 ft. high, graceful, bearing lovely drooping bells; excellent for bouquets either green or dry. Mangles: White and Rose, single and double. *Maculata*, Rose, separate or mixed.

*Statice*, everlastings of great beauty either in beds or when cut; one to three feet high. *Sinuata*, annual, Blue, White, Rose, mixed. *Incana* hybrids, perennial, mixed. *Limonium*, Lilac. *Tartarica*, White, perennial. Special mixture of all sorts.

*Xeranthemum*, hardy annuals a foot high, bearing showy double flowers on long, strong stems; showy in the garden and fine for cutting; cut when fully developed. *Superbissimum*, very large and double; White, Rose, Red Velvet, separate or mixed. *Multiflora*: White, Purple, mixed. All sorts in mixture.

### GRASSES.

These are fine for bouquets, green or dry. Some are useful in groups, beds, edgings, etc.

*Agrostis nebulosa*, elegant, airy, nebulous panicles, fairy-like, fine.

*Pulchella*, more dwarf and rigid.

*Avena*, animated Oat, pretty, curious.

*Anthoxanthum*, sweet vernal grass.

*Odonatum*, true, perennial, sweet.

*Briza Maxima*, large, nodding, Quaking Grass, fine for bouquets.

*Minima*, very pretty, for bouquets.

*Gracilis*, a very fine Quaking Grass.

Complete mixture of Quaking Grass.

*Bromus pendulinus*, an elegant grass; weeping panicles; fine.

*Macrostachyus*, a good sort.

*Chrysurus Cynosuroides*, very pretty.

*Eragrostis elegans*, an elegant grass.

*Euchlenia luxurians*, 8 ft; for groups.

*Gymnothrix latifolia*.

*Hordeum jubatum*, heads with long, hoary awns; for beds and to dry.

*Job's Tears*, *Coix Lachryma*, seeds used as beads; a pretty grass.

*Zebrina*, variegated-leaved.

*Lagurus ovatus*, Hare's Tail; soft, silvery heads; very handsome.

*Panicum capillare violaceum*, violet, hair-stalked, beautiful.

*Fruentaceum*, tall, fine.

*Virgatum*, 5 feet; purplish panicles.

*Plicatum*, good basket plant

*Cueatum*, very ornamental.

All sorts mixed.

*Pennisetum Rupeellianum*, elegant crimson-purple plumes; beautiful.

*Villosum*, very handsome.

*Stipa pennata*, Feather Grass, 2 feet; long, twisted feathery spikes.

*Zea Gigantea Quadricolor perfecta*, an improved Rainbow grass, or corn; colors, pink, yellow, green, white.

*Gracillima*, graceful, variegated.

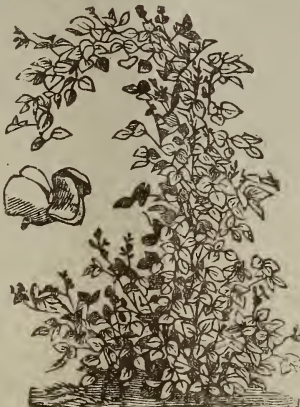
*Zizania aquatica*, wild Rice, tall; fine water grass.

## Fine Ornamental Climbers.

**I**N BEAUTIFYING the home no class of flowers is more useful than the climbers. They ornament the porch pillars, make beautiful unsightly fences or buildings, and give a coziness to the place that nothing else can impart. By all means add a few climbers to your seed list.

**Bean, Scarlet Runner, a handsome blooming vine**

growing to the height of fifteen feet, and blooming all summer; flowers rich scarlet, in clusters, very showy. Do not let seeds form, if you wish a continuous display of flowers. The seeds are edible, and by some are prized as a vegetable. I can also supply the White-flowered Runner, and the Painted Lady, which has pink and white flowers. Blooms more freely in a rather dry, sunny place. Furnish support as soon as the plants show a disposition to climb.



**Cajophora lateritia (Loasa), a vine** with stinging hairs, growing six feet high; flowers large, brick-red, on twin stems, in abundance in autumn. Also Wallisi, white and red; or both mixed.

**Calampelis Scabra, a lovely, tuberous vine** bearing an abundance of carmine or golden flowers. The tubers keep over like Dahlias. Separate or mixed.

**Canary Creeper, Tropaeolum peregrinum, a very pretty, clean vine, growing ten feet high;** foliage delicate and graceful; flowers canary yellow, bird-like in form, very freely produced, and, easily grown.

**Cardinal Climber, said to be a hybrid Cypress Vine.** It is of rapid growth, has cardinal colored flowers like Cypress Vine, but the leaves are curiously cut. It is handsome, and deserves a place among climbers.

**Cardiospermum, Balloon Vine, a very graceful climber, reaching six or eight feet, with elegant foliage and curious, pretty, inflated seed-vessels;** easily grown; a handsome trellis vine. Halicacabum, common Balloon vine. Hirsutum, a rare sort; and both mixed.

**Centrosema, a pretty leguminous vine, climbing or trailing;** flowers pea-like, large, freely borne. Attractive native vine of the south, well worth cultivation.

**Cobea Scandens, an easily grown, vigorous vine, growing thirty feet high, bearing continuously beautiful, large, bell-shaped flowers;** the foliage is slightly tinted bronze, graceful in form, and bears the tendrils at the tip. A charming vine for the pillars of a porch, for a screen, or for a trellis. Purple, or Violet Blue, the finest; also white.



Mr. Park. My Cobea Scandens from your seeds were new in this place and greatly admired. Many wanted me to save seeds for them. Mrs. H. Damon, Cath. Co., N. Y.

Mr. Park. Our Cobea from your seeds climbed all about the porch and above the door in the second story, covered with large bells. Mrs. Ethridge, Ia.

**Cypress Vine, a very pretty vine for a trellis or for screening a porch or wall.** The foliage is deep green, fine cut, and very beautiful; the flowers are Rich Scarlet, White, and Rose, and remain open all day; they are like bright gems against a setting of green. The colors separate or mixed. I also supply Hederacea, the Ivy-leaved, and Kerberi, the later flowering sort, also the Cardinal Climber, previously described.

Mr. Park. Could anything be more beautiful than the Cypress Vine, with its dainty foliage and star-like flowers in abundance? Everybody should have it. Mrs. Ferguson, Tenn.

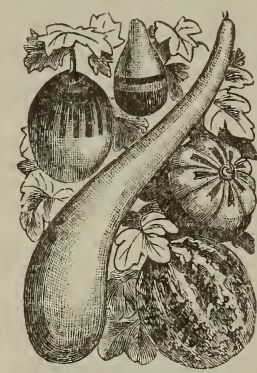
**Convolvulus Major, Morning Glory, the old sort, improved large-flowered;** still one of the loveliest of vines, very rapid grower, blooms profusely, and the large, richly textured flowers are of many bright, beautiful colors. For covering a wall, old fences, unsightly buildings, stumps, or the like there is no annual vine more desirable. The flowers are in clusters, on long stems; showy and beautiful. I have all the choice colors as follows: White, Tricolor, Lilac, Carmine, Dark Red, Rose, Dark Blue, Pale Blue, Incarnate, White striped violet, White striped rose, Crimson, Spotted, separate or mixed. I can also supply Double varieties in special mixture. Be sure to give them a trial, they will please you.



**Cucumber (Ornamental). These are grown for ornamental purposes** upon a trellis or to screen a wall; grow six to eight feet, and are curious and handsome. Cucumis Flexuosus, the Snake Cucumber; Cucumis Dudain, orange, fragrant fruits; Cucumis, Japan Climbing, edible; Echinocystis, the so-called Wild Cucumber, panicles of white, fragrant flowers followed by inflated seed-vessels; Momordica elaterium, the so-called Squirting Cucumber. Separate or mixed.

**Dolichos Lablab, Hyacinth Bean. This is a Bean-like vine** blooming very profusely, the flowers of various colors, followed by large broad seed-pods of a rich violet color, from which the common name is derived. I have Purpureus, purple; Giganteus, lilac; Soudanensis, rosy violet; Princess Helene, pure white; Atroranguens, dark red, varieties separate or mixed.

**Gourds. These are very useful, not only as ornamental vines, but many of the fruits are useful for various purposes.** They are easily grown, and afford as much pleasure and interest as any other vines. I advise everyone of my friends to secure at least a mixed packet, which is specially put up, and includes many sorts. The small, fancy gourds are fine for children's toys.



Bryonopsis, small, variegated Cucurbita, Melanosperma, Argyrosperma, Cucurbita pepo, Apple-shaped; Pear-shaped in bicolor, white and striped; Mock Orange; Flat striped. Japanese Nest Egg, small egg-shaped gourds used as nest eggs. Lagenaria, Hercules Club, Large Bottle Gourd, Flat Corsican, Miniature, Powderhorn, Malabar Melon, Japanese Nest Egg, Dipper Gourd, Dish Gourd.

Luffa, Dish-cloth Gourd, Acutangula, Cylindrica. Momordica, Balsam Apple, Balsam Pear. Pumpkin, Hundred-weight, yellow, Globe, Mammoth, Bright Red, Gray Boulogne, Large Tours, separate or mixed. These are edible and fine for pies. Small Fancy Gourds mixed, very fine. Tricosanthes colubrina, the Snake Gourd, and T. Coccinia, separate or mixed. Gourds and Cucumbers carefully mixed.

**Humulus variegatus, the Japanese Hop;** a beautiful vigorous ornamental vine; flowers whitish, in big panicles in autumn. Sow in autumn or early spring. Do not let the plants go to seed. This vine will climb 30 feet high, and make a dense mass of pretty green and white foliage, and feathery panicles of bloom; excellent for covering a summer house or hiding unsightly views.

**Ipomoea Mexicana Grandiflora alba, the Moon Vine;** large, beautiful, fragrant, white flowers; a vigorous climber, much prized for its foliage and flowers; white and black seeds mixed. Start the seeds early.

**Ipomoea**, beautiful vines of the Morning Glory type; foliage handsome and showy, and the flowers bright in color, abundantly borne throughout the season. Coccinea, small foliage, small scarlet flowers; a rapid grower and very desirable, showy all day. Hederacea, Ivy-leaved vine, large, fine flowers, mostly variegated foliage; Blue, Rose, Azure, mixed. Huberi, beautiful colors mxd. Hesperus, white, scented. Limbata, sky blue, white edge. Leari, intense bright blue. Nil Grandiflora, sky blue, fine. Roxburghi, white. Setosa, cut foliage, small, rosy. Sanguinea, deep scarlet. Rubro-cerulea grandiflora, large, blue, also white.



**Japanese Morning Glories**, very beautiful varieties of Ipomoea, the vines of rapid growth, some with variegated leaves, and all bearing large, exquisitely colored and richly marked flowers in abundance all the season, until frost. Easily grown, splendid vines. Mikado Class: Blue, Brown, Carmine, White, Slate Blue, Purple, Carmine edged white, separate or mixed. Imperialis Class: Pure white; Copper, white throat; Thalia, green-leaved, white; Crimson, white throat; Blue, rose throat; Satin-rose; Pure White, rose throat; White, speckled crimson; Carmine, white throat and border; Dark and Light Blue; separate or mixed. Collata Class: White, Carmine, Dark Blue with white border, Dark Blue, Copper-red, Slate Blue, Copper-red with white border, Rose, Lilac, Light Blue, Carmine with white border, Lilac with white border; separate or mxd. Micans, splendid sorts, mixed.

Japanese Morning Glories, including all of the above splendid sorts in special mixture carefully prepared.

Mr. Park. I never succeeded with Japan Morning Glory till I got your seeds. I started them in pots and transplanted. I will never be without them again. Mrs. French, Wash.

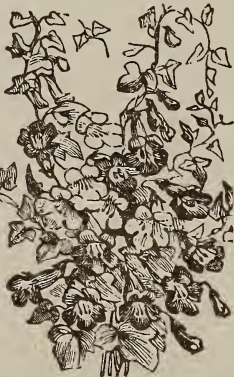
Mr. Park. Let me praise the old-fashioned Morning Glory. The vines became a mass of bloom of many rich colors, and so beautiful. They come voluntarily. Mrs. McLand, Ind.

It is impossible to get seeds of these superb named Morning Glories now. What seeds I have were secured last year, in Italy, before the big war affected trade so seriously. All were carefully tested, as well as all other seeds I offer, and you can depend upon them. My stock is now limited, and if the war continues, this is the last year I can offer them. Get them now, while they may be had.

**Loasa Aurantiaca and Vulcanica mixed.** Very pretty stinging vines, with brick-red, and white and red flowers; six feet high; mixed.

**Lophospermum Scandens**, a handsome, vigorous, silvery vine with purple, bell-like flowers.

**Maurandya**, very dense, beautiful vine with tubular, drooping flowers in autumn; makes a dense mass of graceful foliage, against which the flowers appear with good effect; fine for a trellis or for the pillars of a porch; is especially handsome late, after frost has destroyed many annuals. Violet, Rose, White, Dark Purple, Dark Blue, Light Red. Antirrhiniflora with small lavender flowers. Semperflorens with violet-red bloom, sep. or mxd. Maurandya is a Mexican vine of great beauty, and should be better known. Plants are easily raised from seeds, and never fail to elicit the admiration and praise of all who see them in autumn.



**Mina lobata**, a quick growing vine with clusters of scarlet bloom in autumn; start early; 20 ft high.

**Nasturtium (Tropaeolum)**, fleshy vines with clean, succulent foliage, and elegant, big, showy, delightfully fragrant flowers of a great variety of rich colors and variegations, splendid for cutting. They are annuals, useful for a trellis, for covering a rock, stump or bare place about the grounds, as they will climb, trail or droop, as you wish; always in bloom. I have all the fine colors, and can supply them separate or mixed.

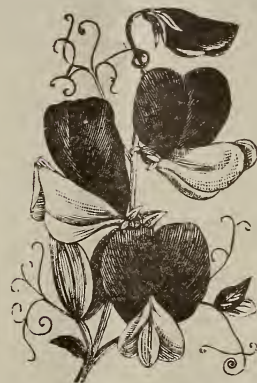


**Giant Climbing**, a very strong-growing class with large leaves, and large, long-stemmed flowers: Scarlet, Orange, Silky Bronze, Bluish Rose, Flaked and Spotted, Yellow with brown spots, Dark Crimson, Yellow, Blackish-red, Pale Yellow, Terra-cotta, Cream white, Rosy Fawn, yellow mottled scarlet, Ruby violet, Brownish Lilac, Separate or mixed. Per lb 95 cts., 1/4 lb 25 cts., oz. 8 cts.

**Lobbianum**, not so vigorous in growth, but very free-blooming and beautiful, the flowers on long stems, richly scented, and fine for cutting: Crimson, Bright Scarlet, Cream yellow spotted red, Pale Lemon flaked red, Blood Red, Yellowish White, Rose-scarlet, Golden yellow spotted blood-brown, Orange-scarlet, Scarlet, Golden Yellow, Dark Scarlet, Yellow spotted red, Dark Yellow with brown spots, Flaming Cinnabar, Pure Violet, Cardinal, Multiflorum scarlet, Flaming scarlet, Fiery scarlet, Cream stained purple, Chestnut Brown, Yellow stained Purple, Black-red, Firefly. Separate or mixed. Per lb 95 cents, 1/4 lb 25 cents, oz. 8 cents.

**Other Choice Nasturtiums:** Dark-leaved Sorts mxd, Ivy-leaved Sorts mixed, Madam Gunther Hybrids mxd, Variegated-leaved mixed, Fringed-flowered mixed. These only by the ounce or packet.

**Sweet Pea, Improved Large-flowered.** The Sweet Pea is an indispensable. It is a hardy annual, and can be sown fall or spring.



The vines are pretty and are covered with a profusion of beautiful, richly scented flowers on long stems, showy in the garden, and unsurpassed for cutting for personal adornment or bouquets. Sow in trenches in a sunny place, covering half an inch deep, and filling in as the plants grow. Furnish support early. To avoid plant lice mulch with chopped tobacco stems, which will also enrich the soil. My mixture of Sweet Peas is unsurpassed, as it includes the most beautiful varieties carefully proportioned. Price per lb 95 cents, 1/4 lb 25 cts., oz. 10 cts., and Park's Floral Magazine a year, for only 15 cents. My seeds are

all tested, and will be found reliable. I can supply the following fine sorts separately.

White: Blanche Burpee, Nora Unwin, Shazada, Modesty. Red: Black Knight, Stanley, Salopian, Mars, Prince Wales. Pink: Apple Blossom, Janet Scott, Lovely Queen of Spain. Dark Blue: Brilliant Blue, Unique, Lord Nelson, Midnight. Light Blue: Eckford, Mid-blue, Higginson, Bieberstadt. Margined: Dainty, Maid of Honor, Mrs. Wilmot. Yellow: Mrs. Collier, Evelyn Byatt, Hon. Mrs. Kenyon. Red Blotched: America, Aurora Blanche Ferry, Senator. Blue Blotched: Gladys French, Helen Pierce, Prince Olaf. Spencer Sorts: Queen Victoria, White, Aurora, Routzham. Cupid: White, Pink, Firefly, Apple Blossom, Royalty. Other Sorts: I have many other large and Spencer Sorts.

Mr. Park. I will not soon forget my delightful experience with a 5c pkt of your Mixed Large-flowered Sweet Peas. I had the grandest display of colors I ever saw. Mrs. Coen, Ill.

**Thunbergia Alata**, a lovely free-blooming, everblooming vine growing 10 ft. high; alike valuable for winter or summer flowers; easily grown from seeds, showy and beautiful. Buff with dark eye, White with dark eye, Pure Yellow, Orange, Pure White, separate or mixed.

**Vicia Gerardi**, a pretty annual climber with dark violet flowers in racemes. V. Atropurpurea, a species with handsome foliage and deep purple flowers. V. Unijuga, very handsome, with violet-purple flowers in dense racemes. Separate or mixed.

## Biennials and Perennials.

**YOU CANNOT** spend a dollar more judiciously than in buying of these. They are "the poor man's flower" as well as the rich, as they take care of themselves, and last for years.

**Acanthus**, showy, handsome perennials four feet high, shining foliage; purple, white, mixed.

**Achillea Ptarmica** fl. pl., attractive hardy perennial, foliage fine-cut, double, white, like Daisies.

**Aconitum**, Monkshood, 2 ft., spikes of fine rich-colored, hooded flowers, Blue, White, Wilsonii, mixd.

**Adlumia cirrhosa**, Vine, 20 ft.; fine foliage; flowers soft pink, in clusters; thrives in shade.

**Anemone Japonica**, beautiful Japan sort; White, Rose, mixed. Sylvestris white. Penna. white. All mix.

**Anthemis Kelwayii**, a splendid free-blooming hardy perennial, 2 ft; yellow, easily grown, showy.

**Aquilegia**, (Columbine), one of our best hardy perennials. Once started a bed will last for years, making a charming display every season. Plants are easily started, thrive in sun or shade, and bloom for many weeks. Do not omit this grand flower from your list. I keep these choice varieties: Baicalensis Blue, Californica yellow, Canadensis scarlet, Chrysantha yellow, Corulea blue, white, yellow, and double, mixed; Durandi, double, striped; Glandulosa vera, long spur; Helene, blue with white corolla; Nivea, white; Olympica, blue, also double; Truncata; Long-spurred Hybrids mixed; Vulgaris, mixed; Siberica, blue, double; Compacta, double, mixed. Special Complete mixture of all sorts.



flowers were Columbine, and how lovely! White, Yellow, Azure, Purple, Lavender, Red; some were over 2 ft high. I want a large bed next year. Mrs. Bohn, Exira, A.

**Aethionema grandiflora**, Lebanon Candy-tuft, hardy perennial; flowers rose, in abundance, pretty.

**Agrostemma coronaria**, 18 in. high, free-blooming, bright crimson and white flowers, splendid; also A. Flos Jovis, Pink, White with rose center, mixed.

**Alysum Saxatile**, gold-flowered; also Argenteum, Prostratum, Gemonense, mixed. Soak seeds for a day before sowing.

**Anchusa Italica**, Dropmore, 3 ft, flowers rich blue in profusion; blooms in fall if sown early.

**Androsace coronopifolia**, Rock Jessamine; White, six inches high, makes a fine spring bed.

**Arabis alpina**, a choice, low, hardy early spring-blooming plant; sheet of pure white clusters.

**Arenaria Montana**, a low, spreading perennial; bears big, white flowers in terminal racemes.

**Armeria**, handsome tuft plant with large rose flowers on stems a foot high.

**Artemisia gracilis**, silvery, fragrant foliage. Saccorum viridis, elegant green foliage, 4 ft high.

**Asclepias tuberosa**, beautiful native plant a foot high; orange-scarlet, in big heads, very showy.

**Asphodelus luteus**, 3 ft, shining yellow flowers; looks well among shrubbery; easy to grow.

**Aster**, Perennial. Michaelmas Daisy; very free-blooming, showy late fall flowers rivaling Chrysanthemum; bloom well first season when started early. Alpini, dwarf, mixed. Bessarabicus, dwarf, purple. Nova Anglie, large, early-flowering, mixed. Snowflake, white, fine. Bigelovi, half dwarf, lilac. Large-flowered, mixed.

**Astilba Davidii**, a splendid tall perennial from China, rose flowers, very pretty.

**Aubrietia**, low hardy plants that become a sheet of charming flowers in early spring; easily grown. Purpurea purple, Leichtlinii carmine-rose, Deltoides, lilac.

**Barbarea vulgaris folis variegatis**, early, variegated cress-like plant; handsome; 1 foot high.

**Baptisia australis**, 3 feet; strong, hardy plant; bears long spikes of rich blue pea-like bloom.

**Boltonia glastifolia**, 4 ft, large, spreading top, a mass of lovely bluish Aster-like bloom in autumn. B. Latisquama, perennial, 4 ft, handsome, Aster-like, showy

**Bupthalmum grandiflorum**, 8 feet tall, robust; golden daisies freely borne on top; hardy, grand.

**Campanula**, Canterbury Bell, biennials of great beauty; flowers large, bell-like, freely borne on tree-like plants 18 inches high; Single: White, Dark Rose, Light Rose, Dark Blue, Light Blue, Rose, Lilac, Dark Lilac, separate or mixed. Double: Lilac, Rose, White, Blue, Purple, C. Calycanthus (Cup and Saucer), White, Rose, Lilac, Blue, sep. or mixed. Complete mixture of all classes and colors.

Deans Improved Hybrids, mixd.

**Campanula**, Perennial, lasting, showy plants of easy culture, some tall, others dwarf. Pyramidalis: White, Blue, mixed. Primulifolia, lilac-blue, new. Rotundifolia, Scotch Hairbell. Persicifolia, White, Blue, Double White, Double Blue, mixed. Carpatica, Blue, White, mixed. Siberica mixed. Vidali, free-blooming. Grandis lilac. Glomerata mixed. Complete mixture of all sorts.



**Canarina**, basket plant, bell flowers, buff.

**Carnation**, Hardy Garden, double, fragrant, very free-blooming and beautiful. White, Red, Yellow, mixed. Grenadin mixed. Dwarf Vienna mix. All mixd.

**Cassia Marilandica**, 4 ft, yellow and black.

**Catanache** bicolor, 1 ft, dbl., blue, white.

**Centaurea Montana**, 1 ft, blue, white, mx. Babylonica, 6 ft, yellow. Salmanica, Ruthenica, mixed.

**Cerastium grandiflorum**, one foot, white daisies in spring. Biebersteini; Tomentosum, white, mxd.

**Cheiranthus semperflorens**, very free, long-blooming, golden.

**Chelone barbata coccinea**, 2 ft, beautiful, scarlet. Hybrids, mixed colors. Glabra compacta, All mixd.

**Chrysanthemum**, hardy sorts mixed.

**Cineraria**, white foliage, fine for edgings. Candidissima, snow-white, Diamond, pure white.

**Cirsium pulchellum**, Ornamental Thistle.

**Clematis**, various kinds in fine mixture.

**Convolvulus althaeoides**, hardy vine.

**Coreopsis grandiflora**, a splendid perennial; 2 ft. big golden bloom; fine for cutting.

**Colchicum autumnale**, autumn Crocus.

**Delphinium**, Perennial Larkspur, mostly tall plants with long spikes of showy flowers all the season. Elatum: Blue, White, Indigo, Sky Blue, mixed; Double mixed. Formosum, blue, mixed. Complete mixture.

**Dianthus Gardnerianus**, the red Sweet-William Pink, Deltoides, free-blooming Baby Pink, mixed.

**Dictamnus fraxinella**, Flame Flower; a beautiful hardy perennial, big trusses, White, Red, mixed.

**Digitalis**, Foxglove, stately plants, 3 feet, showy hanging bells, beautiful. Maculata Iveryana, spotted. Gloxinoides lilac, rose, mixed. Purpurea, white, rose, red, mixed. Lutea yellow. Complete mixture of all sorts.

**Doronicum Caucasianum**, golden bloom.

**Dracocephalum Ruyschianum**, Dragon Head, blue, white, mixed. Japan Gem, blue. All mixed.

**Echium Creticum**, biennial; 1 foot, scarlet. Plantagineum, long wreaths of rich violet bloom, mixed.

**Echinops**, Sphaerocephalus, 6 feet, azure. Ritro, violet. Ruthenicus, blue, very fine, mixed.

**Epilobium hirsutum**; also Spicatum; French Willow; long spikes of handsome flowers, mixed.

**Erigeron**, pretty hardy perennials; Coulteri, white. Aurantiaca, orange. Glaucus, fine. Elatior, lilac. Meranthus, purple. Speciosus. Pulchellum. All sorts mixed

**Erinus alpinus**, fine border plant; flowers freely borne, purple, very handsome.

**Erodium manescavi**, 1 ft. geranium bloom

**Eryngium alpinum**, fine border plant, 2 ft. stems and globes of bloom blue.

**Eupatorium ageratoideis**, beautiful fall plant; 2 feet, branching, a mass of white bloom.

**Fragaria Indica**, Strawberry-like, golden flowers, fine for baskets, and carpeting in shade.

**Francoa glabrata**, long wreaths of lovely white bloom; Known as Maiden's Wreath.

**Gaillardia Grandiflora**, 1 foot; big, showy flowers all season; fine for beds and cutting. Maxima Red, Crimson, Oculata, Gold-bordered. Separate or mixed.

**Galega Officinalis**, azure; **Nana Rosea fl. pl.** new, double, rosy lilac, dwarf, beautiful.

**Gentiana acaulis**, intense blue; **Cruciata**, light blue; **Lutea**, yellow; all fine Gentians. Mixed.

**Gerardia**, new hybrids, mixed; lovely tubular flowers in long, dense spikes; splendid.

**Geranium sanguineum**, purple; **Grandiflorum**, lilac; very fine flowering plants.

**Geum atrosanguineum**, 2 ft. double, scarlet, showy; Mrs. Bradshaw, large-flowered, double, scarlet, mx.

**Glaucium**, 2 ft. large, showy orange and brown flowers; Tricolor, Burbank's Hybrids. Mixed.

**Globularia trichosantha**, dark blue, fine.

**Gunnera Scabra**; **Manicata**; mixed. Huge, radical leaves; make a fine display by the water's edge.

**Gypsophila paniculata**; 2 ft.; for bouquets; white, fairy like bloom. Compacta, dwarf, double. Mixed.

**Helenium Bigelowi**, golden flowers, very fine. Riverton beauty, brown and gold; mixed.

**Helianthus Maximiliani**, tall, late, yellow.

**Hemerocallis**, Day Lily, red, yellow, mx.

**Heracleum**, Giant Parsnip; 8 feet; huge umbels of white flowers; immense leaves, very showy.

**Heuchera sanguinea hybrids**, fine, mixed.

**Hibiscus Crimson Eye**, 8 ft.; White, Rose, with distinct red eye; Meehan's Hybrids, White, Crimson, Rose, Red, large flowers, mixed; Moschatus, mixed; Palustris. These are all showy and beautiful.

**Hollyhock**, Chaters, Pure White, Peach-

blossom, Apple-blossom, Rose, Cream with dark eye, Sulphur, mixed. Extra fine double English. Pure White, White with violet center, Sulphur, Flesh, White with lilac edge, Creamy white, Cream with dark eye, Salmon-pink, Peach, Mauve, Rose fringed, Purple rose, Rose, Pink, Neyron red, Carmine, Crimson, Reddish purple, Garnet red, Mauve with violet, Magenta; separate or mixed. Fig-leaved, single, mixed; Alleghany, fringed, semi-double. Complete Splendid mixture of all varieties. Do not fail to try them.

**Hyacinthus candicans**, summer Hyacinth

**Iberis**, Candytuft, perennial; **Gibraltarica hybrida**; **Sempervirens**; **Sempervirens**, white, Mixed.

**Incarvillea**, Delavayi, large, rose-spotted, Variabilis, rose; **Grandiflora**, carmine. All mixed.

**Inula glandulosa**, 2 ft.; big golden flowers.

**Ipomopsis Elegans**, Standing Cypress, 2 ft. fine-cut foliage, spikes of bright Cypress-like bloom, mx

**Iris Germanica** mixed; **Kamperi**, Japan, mixed, Pumila, dwarf, mixed. All sorts mixed.

**Isatis glauca**, silvery plant, 2 feet, branching, becoming a mass of yellow bloom.

**Lathyrus**, Perennial Pea, 8 ft., big clusters of bloom all season, give support. White, Rose, mixed.

**Lavandula vera**, the true Lavender; fragrant foliage, pretty flowers, a desirable Perennial.

**Leucanthemum**, Shasta Daisy; 2 to 4 ft; large white flowers; splendid. Alaska, white, Westralia, white, California, yellow, Vomera, new giant French, mx.

**Linaria Macedonica speciosa**, 3 feet, long spikes of yellow bloom; superb garden plant.

**Linum perenne**, Perennial Flax, Rose, Blue, White, mixed, Flaxum, yellow; all mixed.

**Lupinus**, showy and beautiful; **Arboreus**, White, Yellow, mixed; **Polyphyllus**, White, Rose, mixed.

**Lychnis Viscaria**, splendens, very attractive. 1 foot; panicles of bright red bloom, also rose, mixed

**Lythrum Salicarium** two feet; branching, showy. Roseum superbum, purple-rose, fine.

**Malva Moschata**, 1 ft, free-blooming; large, showy flowers, White, Rose, mixed.

**Matricaria Capensis**, 1 foot, double, pure white, showy. Golden Ball, double, yellow, mixed.

**Monarda Hybrida**, 3 feet high; showy and beautiful mints, various colors, mixed.

**Morina longifolia**, long, spiny, Thistle-like leaves, flowers white turning to red, whorled, 2 feet, fine.

**Myosotis Dissitiflora**, large, blue Forget-me-not. Palustris semperflorens, perennial. Both mixed.

**Oenothera Lamarckiana**, 3 ft; lovely yellow flowers 4 in. across. Youngii, golden. Speciosa, rose, mx.

**Ononis rotundiflora splendens**, a handsome perennial, 1 foot, brilliant rose, clustered.

**Onopordon Acanthium**, a bold, vigorous, branching, silvery plant 5 feet high, large heads, purple.

**Orobus Vernus**, charming border plant, flowers abundant in early spring. Fischeri, fine, mixed.

**Paeonia Tenuifolia**, earliest Paeony, scarlet; **Officinalis**, later, red. **Chinensis**, mixed, double, all colors, from my splendid collection. Takes 2 years to germinate.

**Pardanthus Chinensis**, the beautiful, hardy Blackberry Lily, flowers rose, spotted. Easily grown.

**Pea**, Perennial; see **Lathyrus**, white, red, mx.

**Pentstemon**, beautiful hardy plants; lovely tubular flowers in panicles. Lobbi, golden yellow. Gordoni splendens, large, brilliant dark blue. Hybridus pulchellus, mixed. Ovatus, blue. Speciosus, fine. All mixed.

**Pilox**, splendid perennials; flowers bright, in large panicles. New Dwarf, mixed. Tall sorts, mixed. Both mixed. Sow in autumn or early spring.

**Physalis Franchetti**, Chinese Lantern, red, inflated seed-vessels, showy, cut and dry for winter bouquets. Edulus, golden, ground cherry.

**Physalocia**, Poke, 5 ft, crimson stalks and stems; white racemes, dark red berries; leaves turn to rich, variegated carmine after frost; fine bold plant.

**Pinks**, Picotees, lovely, hardy plants; flowers very numerous, mostly double, of many colors, richly clove-scented. Pinks: Pheasant's eye, mixed. Cyclops, mixed. Semperflorens, semi-double, blooms all summer. Double Scotch, Double white, Double mixed. Picotees, mixed. Pinks, Picotees and Carnations, mixed.

**Platycodon**, splendid, 1 foot; balloon-like buds; large, open flowers, one of our best perennials. Sometimes called Campanula grandiflora. Single: White, Blue, mixed. Double: White, Blue, mixed. Maries Dwarf: Blue, White, Major, mixed. All varieties mixed.

**Polemonium**, Jacob's Ladder, 2 ft., blue and white flowers. Richardsoni, blue. All mixed.

**Polygonum**, **Cuspidatum**, 10 ft. white, in upright racemes. Baldschuanicum, Multiflorum, Vines.

**Poppy**, Perennial, the most gorgeous and beautiful of all Poppies; a bed of them makes a glorious display, eclipsing all flowers of the garden when in bloom; both foliage and flowers beautiful; 3 feet high, flowers often 9 inches across, on long, strong stems; colors, white or flesh to deep crimson, mostly flaming scarlet. I have these fine sorts to offer separately, and my mixture contains the m all. All seeds tested. Rembrandt, Livermore, Victoria, Brilliant, Colosseum, Grand Mogul, Lilliput, Parkmanii, Semi-plena, Tom Thumb, Mrs. Perry, Queen Alexandra, Dark Crimson. Complete mixture of all.

**Poppy**, Alpine, low-growing, beautiful Poppies in lovely colors. White, Scarlet, Rose, mixed.

**Poppy**, **Nudicaule**, the Iceland Poppy. Single: white, yellow, red, mixed. Double: white, yellow, red, mixed. Both mixed, all colors. Pilosum, new.

**Potentilla Formosa**, 1 ft; pretty brick-red flowers with black center, beautiful.

**Primrose**, Hardy. I offer many sorts of hardy garden Primroses, as follows: **Acaulis**, the early-flowering tufted Primrose, each flower with a long, radical stem, white, blue, mixed. **Denticulata**, mixed. **Farinosa**, rose. **Gold-laced**, **Japonica**, mixed. **Officinalis**, yellow. **Veris Elatior**, splendid, mixed. **Veris Hybrids**, French, extra, mixed. **Elatior Duplex**, mixed. **Auricula**, extra Belgian sorts, mixed. ~~See~~ Seeds of hardy Primroses will often lie dormant for two or three years before starting. My seeds are fresh and reliable. All sorts mixed.

**Ptarmica**, Double, 1 ft high; double white flowers freely produced, showy and handsome.

**Pueraria Thunbergiana**, Kudzu Vine; will grow 50 ft in a season, bears big racemes of purple flowers in autumn. A grand vine to cover an old tree or building, or a summer house. Fresh seeds direct from Japan.

**Pyrethrum**, Perennial Cosmos; 2 ft; lovely fine-cut foliage. **Cosmos**-like flowers; White, Rose, Crimson, mixed, Double-flowered, very beautiful double flowers of various colors, extra, mixed. Single and double, mixed. P. Tchihatchewii, forms a carpet over a dry bank or path in sun or dense shade where nothing else will grow, white with yellow disk.

**Ranunculus Aconitifolius**, 2 feet, branching and covered with white bloom. R. Asiaticus, mx.



SEEDS FOR THE

# Window Garden.

There is much pleasure in watching the tiny seedling develop into a big blooming plant, and I offer the best seeds of the best kinds for that purpose. Always include a few in your order.

**Rehmannia angulata**, an easily grown, hardy perennial, Pentstemon-like flowers. Purple, Rose, Red, with yellow throat, very free-blooming, beautiful.

**Rheum**. Fine Rhubarb-like plants; plume spikes of bloom, showy and handsome in both foliage and flowers. Emodii, white plumes. Palmatum fl. rubro, red.

**Rocket**, Sweet, 2 ft; hardy, with big Phlox-like panicles of richly-scented bloom in early summer, and later; white, purple lilac, mixed, Dwarf, white, violet, mixd.

**Romneya Coulteri**, California Tree Poppy; 4 ft. huge white bloom. Likes dry hot soil, splendid.

**Rudbeckia Sullivanti**, 2 feet, mass of rich, golden bloom in autumn. Newnani, 1 foot, a gold mass. Purpurca, 3 ft. large purple-red bloom all fall. Mixed.

**Salvia Pratensis**, a beautiful, ever-blooming, hardy perennial, 1 foot, Blue, Rose, mixed.

**Santolina Chamæcyparissus**, Lavender Cotton, silvery foliage, fine pot plant, trailing.

**Saponaria Ocmoides**, trailing; forms a carpet of rich, pink bloom in May. S. Officialis, fl. pl., double-flowered Bouncing Bet, lovely pink bloom.

**Saxifraga Cordifolia**, rose. Huetiana, yell'w.

**Scabiosa Caucasicca**, 2 ft., blue, white, mixd.

**Scilla Campanulata**, erect racemes of blue.

**Sedum spurium coccineum**, succulent, red.

**Senecio tanguticus**, new, China; 6 ft., bold leaves, lobed; small yellow bloom, splendid.

**Silene Orientalis compacta**, 1 ft; branching, forms a little tree, a mass of rich pink bloom.

**Silphium Perfoliatum**, 8 ft.; showy plants with big Daisy-like golden flowers; fine in a group.

**Solidago**, Golden Rod, plumes of elegant golden flowers in autumn; mixed varieties.

**Spiraea aruncus**, Goats Beard, 2 ft. White.

**Statice latifolia**, Sea Lavender; 2 feet; blue.

**Stenactis speciosa**, 2½ ft; large, purple, Aster-like flowers in abundance in June.

**Stock**, Biennial, Giants of Nice, dbl. bloom.

**Stokesia Cyanea**, 2 ft; lovely blue, Aster-like bloom. Also S. Hybrida, various colors from white to purple, mixed. Splendid perennials that will please you.

**Sweet William**. 1 ft., grand flowers of the Pink family, for beds and borders; flowers in dense tufts or heads, of many rich colors, and deliciously scented. If kept from seeding will bloom all summer. Single: Black, White, Eyed, Margined, Holborn Glory, Dark Crimson, Harlequin with flowers of different colors in one head, Giant Auricula, Salmon, Mutibilis, Single mixed. Double: Black, White, Rose, Margined, Dark Crimson, Double mixed. Also, Single and Double mixed.



Mr. Park: I know of no flower I like better than Sweet William. The flowers are single and double, of all colors from white to maroon, and so fragrant. I do not let them seed.—Mrs. Richardson, Naples, Me., Nov. 22, 1916.

**Telekia**, see Bupthalmum, 8 feet; golden.

**Thalictrum aquilegiafolium**, 3 ft., a cloud of bloom. Dipterocarpum, 4 feet, lilac.

**Thermopsis fabacea**, 3 ft; yellow, early.

**Trachelium**, Throatwort, 1½ feet, much branched, flowers small, in clusters; likes hot, dry place; good for vases. Blue, White, mixed.

**Tradescantia Virginica**, 1 ft; Blue, Pink.

**Trifolium repens fol. purpureum**, Shamrock, hardy, with white bloom.

**Tritoma hybrida**, 2 feet, big spikes, showy.

**Trollius Europeus**, Globe Flower, 1 foot, lovely globe-shaped golden bloom, fine.

**Tulipa**, Rembrandt, variegated, pretty mx.

**Tunica Saxifraga**, a beautiful, ever-blooming hardy edging plant, dense little plants covered with a profusion of bloom all summer.

**Valerian**, Greek, 1 ft. Blue, White, Large-flowered, mixed. Pretty hardy garden plants.

**Verbascum Olympicum**, Olympian Mullein; 4 ft, golden rods of bloom, silvery foliage. Phonicum, hybrids, mixed. Phlomoidea, 7 feet, golden bloom nearly all season, one of the best. Phonicum, mixed. Blatteria, mixed. Complete mixture of all sorts.

**Veronica spicata**, 2 ft; long spikes of blue and rose flowers. Gentianoides lilac.

**Viola odorata**, Blue, White, The Czar, Red, mixed. These are fine sweet-scented Violets.

**Vitadenia triloba**, a superb edging plant, rose flowers in profusion, hardy.

**Wahlenbergia**, see Platycodon.

**Wall Flower**, Double Dwarf, Yellow, Brown, Violet, mixed. Tall, mixed. Winter-blooming, mixd.

**Abrus Præcatorius**, Prayer Bean; Vine 30 ft. Pea-like bloom; seeds scarlet, used for beads and fancy work. Plant out doors in Florida, pot-plant at the north.

**Abutilon**, pretty, ever-blooming shrub; lovely drooping bell-shaped flowers. New Hybrids in white, rose, red, yellow, variegated-leaved, fine mixture.

**Acacia**, Tampa, lovely shrub, green stems, exquisite, fairy-like foliage, blooms well planted out in Florida. Pot-plant at north. Mixed sorts.

**Achimenes**, pretty, Gesneraceous, mixd.

**Agapanthus**, African Lily, 2 ft., bearing umbels of rich tubular bloom. Dark Blue, Light Blue, Mooreanus, 1 foot, deciduous hardy, mixed.

**Agathæa**, the lovely blue Paris Daisy; fine in winter as in summer. Superb everblooming pot plant.

**Agave**, Century Plant, plain, variegated.

**Alstroemeria Chilensis**, 2 ft; Lily-like, fine.

**Angelonia Grandiflora**, pretty pot plant; fragrant, showy bloom, Purple, White, mixed.

**Antigonon leptopus**, a beautiful vine with hard, tuberous roots, 30 ft, hardy south, lovely big clusters of carmine-rose bloom, fine. Known as "Mountain Rose".

**Aristolochia elegans**, splendid free-blooming vine with curious "elephant-ear" bloom. A. Siphon, Dutchman's Pipe Vine, hardy, mixed.

**Asclepias curassavica atrosanguinea**, 1 ft; beautiful, everblooming, crimson bloom in clusters. In pots or at the south it blooms continuously.

**Asparagus**, delicate foliage plant; prized for pots or baskets. Plumosus nanus, Robustus, Blampiedii, Sprengerii, Tenuissimus, separate or mixed.

**Azalea Indica**, free-blooming shrub, mixed.

**Begonia**, Fibrous-rooted, splendid varieties, all colors, single, double, mixed. Ever-blooming Erfordii, Fireball, atropurpurea, Lubeca red, Prima Donna.

**Biancæa scandens**, 10 ft., vine, handsome.

**Bocconia**, Plume Poppy; 8 feet, hardy, big tawny plumes, showy, in groups. Japonica, Macrocarpa.

**Boston Smilax**, charming pot vine north; garden plant south. Lovely foliage, fragrant, white bloom, scarlet berries. Old sort; also Myrtifolia, new sort, mixed.

**Browallia speciosa**, new, large-flowered, splendid winter-blooming pot plant. B. Elate, blue, white, mixed. All mixed. Easily grown, beautiful.

**Cactuses**, succulent plants for dry, sandy soil. Many fine varieties in mixture.

**Calceolaria**, large-flowered; 1 foot, fine window pot plants lovely inflated bloom. Vesuve, very bright. Olympia, splendid. White with red spots. Plain, mixed. Tigred, mixed. Graslöse, mixed. Compacta grandiflora, dwarf, mixed. Complete mixture. Rugosa, shrubby, for beds, mixed. Start early. My Calceolarias are from France, and of the best quality.

**Carnation**, Winter-blooming, finest, mixd.

**Chrysanthemum**, Japonica, double mixed. Indica double, mixed. All sorts mixed.

**Cineraria Hybrida Grandiflora**, elegant winter-blooming window plants: White, Red, Striped, Blue, Snowball, Star, Pompadour, Separate or mixed. Dwarf, mixed. Polyanthus stellata, small-flowered, mixed. Polyantha Radiata, mixed. Double white, mixed. All mixd.

**Clianthus Puniceus**, scarlet-flowered vine.

**Coleus**, grand, easily-raised foliage plants, Spotted, Yellow grounded, Cut-leaved, Bizarre, Colosse des Pyrenes, Carmine edged green, Regalis. Large-leaved mixed. Cut-leaved mixed. Complete mixture of all sorts.

**Commelina Sellowiana**, very pretty basket plant, rich, cobalt-blue flowers.

**Convolvulus Mauritonicus**, lovely basket plant, blue. Aureus, splendid vine, golden bloom. Cupanlaus, spotted. All sorts mixed.

**Cryptostemma**, tender annual, golden.

**Cuphea**, splendid pot plant, free-blooming, beautiful. Platycentra, red. Miniata, mixed. All mixed.

**Cyclamen Gigantum**, among the finest of winter-blooming pot plants. White, Red, James Prize, Carmine, Rose, Papilio, Salmon Odcratum. Extra mixed.

**Cyperus**, Umbrella Plant, a fine, easily-grown aquatic. Palm-like foliage. Alternifolius, green. Variegatis, striped. Both mixed.

**Dolichos Lignosus**, evergreen vine; 12 feet; purple bean-like flowers, excellent.  
**Dracaena Draco**, Dragon Tree; fine foliage.  
**Eremurus robustus** and **E. Himalaicus**, fine hardy plants of Lily family. Mixed.  
**Eucalyptus citriodora**, fragrant-leaved shrub Globulus, Blue Gum. Resinifera, hardy. Mixed.  
**Eucharidium Brewerii**, lovely pot plant; rosy purple bloom freely borne  
**Eupatorium Riparium**, white flowers in clusters, sure to bloom in winter Weinmannianum, white.  
**Exacum affine**, beautiful free-blooming dwarf pot plant, sweet lilac bloom.  
**Ferns**, Greenhouse, mixed; Hardy, mixed.  
**Francoa Ramosa**, Hybrids, white in spikes.  
**Freesia Refracta**, white, very sweet, bloom first season. F. Leichtlini, yellow. Mixed.  
**Fuchsia**, Single and Double mixed. Fulgens, scarlet, Triphylla, three-leaved. Corymbiflora mxd.  
**Gazania**, showy yellow bloom. Sorts mxd.  
**Genista tinctoria**, golden, Pea-bloom; hardy  
**Geranium**, Zonale, finest mixed. Extra choice mixed. Tom Thumb sorts mixed. The following are 10 cts per pkt: Double, Gold, tricolor. Variegated-leaved. Ivy-leaved. Odier or Fancy. Apple-scented or Odoratium.  
**Gerbera**, French Hybrids, Race Adnet.  
**Gesneria Zebrina**, rich foliage, handsome bloom. Nagelia, finest mixed.  
**Gloxinia**, summer-blooming tuberous plants. I offer Choice French seeds. White, Scarlet, Red edged white. Blue edged white, Spotted, Stained, Blue, mx.  
**Grevillea**, Silk Oak; a fine pot plant.  
**Hardenbergia Comptoniana**, lovely vine.  
**Hedysarum coronarium**, French Honey-suckle, 2 feet, branching, deep red, in racemes.  
**Helichrysum Brachyrhynchium**, golden.  
**Heliotrope** Large-flowered, very fragrant; grows well in sun, beautiful. White, Purple, Blue, Lilac-red, Blue and white, Regale mixed. Complete mixture.  
**Hibiscus**, easily grown; large, bright flowers. Californicus, yellow. Rosicus rose. Manihot, yellow.  
**Humea elegans**, 5 ft; red weeping panicles.  
**Ice Plant**, covered with icy drops; fine.  
**Impatiens**, everblooming pot plant of great beauty, very free-blooming, showy. Sultani, mixed. Holsti, mixed. Balfouri, new rose, white. All sorts mixed.  
**Iponcea**, very handsome vines, colors mxd.  
**Jacaranda Mimosæfolia**, Fern-like, fine.  
**Kenilworth Ivy**, charming basket plant.  
**Kennedy**, pretty leguminous vines, mxd.  
**Lantana**, fine for winter and summer pot plants, always in bloom; prized also for beds, as they do not mind sun or drought. Finest sorts mixed.  
**Lavatera arborea**, fine variegated foliage.  
**Lophospermum scandens**, pretty vine.  
**LOBELIA**, for pots or baskets. Hambergia, blue. White Lady, white. Barnard's Perpetual, blue with white eye. Compacta Crystal Palace, best for small pots. Sapphire, new, blue, white mixed. Complete mixture.  
**Mandevillea**, fine vine, fragrant, white.  
**Melianthus major**, 6 ft; brownish, pretty.  
**Mimosa**, Sensitive Plant, 1 ft; fine pinnate foliage, drooping when touched, lovely pink bloom.  
**Musa**, Banana, fine foliage plants, mixed.  
**Myrtus communis**, an elegant pot shrub.  
**Nerium**, Oleander, pretty, white, pink.  
**Nicotiana Affinis** mixed. Sandera, mixed.  
**Nymphaea alba**, white. Lotus, Egyptian Water Lily, with umbrella leaves, Tulip flowers.  
**Palms**, many choice varieties mixed.  
**Passiflora**, Passion Vine, finest mixture.  
**Pelargonium**, Fancy Geranium, finest.  
**Phormium Tenax**, New Zealand Flax.  
**Physianthus albens**, climbing, white, fine.  
**Poinciana**, Gillesi, Pulcherrima, mixed.  
**Psidium**, Guava, Common, Cattleyana, mx.  
**Reseda**, Sweet Mignonette, Machel, for pots: Bright Red, White Pearl, Golden Yellow, mixed.  
**Rivinia humilis**, fine pot plant, red berries.  
**Salvia coccinea**, a very showy, free-blooming Salvia, always in bloom. Flowers rich velvety scarlet.  
**Santolina**, Lavender cotton, silvery foliage.  
**Scabiosa**, Dwarf Double, 1 ft, fine, mixed.  
**Schinus molle**, California Pepper Tree, fine.  
**Schizanthus Wisetonensis**, fine pot plant.

**Primula**, Chinese Primrose, French Giant. This is the finest of Chinese Primroses, and my seeds are direct from France, and of the best quality. I supply the following to color: Pure white, Rosy white, Blue, Delicate Rose, White with brown stems, Bright Crimson Glittering red, mixed. Fern-leaved Giant; Blush, Pure White, Blue, Copper-rose, Pure Rose, mixed. Double: Pure White, Copper-rose, Striped, Light Rose, Glittering Red, mixed.  
**Choice Named Fringed Primroses**, large-flowered, very beautiful. The Dutchess, white with red center. Defiance, salmon-scarlet with white center. Alba Magnifica, white. Mont Blanc, white. Marmorata, marbled. Stelata, Striata, striped. Star Primrose: White Queen, Light Blue, Dark Blue, Carnation-flowered, Pink, Carmine, mxd.  
**Primula Obovica**, Large-flowered: White, Bright Rose, Blue, Carmine, Rosy Chamois, Crimson, sep, or mxd Fringed mixed. Double mixed. Giant mixed. All mixed.  
**Primula, Other Sorts:** Forbesi, rose. Forbesi Compact, red. Malacoides, lilac. Floribunda, yellow. Kewensis yellow. Pulverulenta, carmine.  
**Sempervivum**, succulent, free bloom, fine.  
**Smilax**, a lovely trellis vine for window.  
**Solanum**, Jerusalem Cherry, red, yellow.  
**Stevia paniculata**, white flowers in panicles.  
**Streptocarpus**, pretty, free-blooming, mx.  
**Sutherlandia**, scarlet, Pea-like flowers.  
**Tacsonia**, vines. VanVolxemi, Exoniensis.  
**Tecoma Smithii**, a good pot vine; yellow.  
**Thunbergia alata**, fine trellis vine, mixed.  
**Torenia**, Exquisite pot plant, covered with bloom. Velvet Blue, White and pink, Yellow, mixed.  
**Tropeolum Minus**, Yellow striped brown, Yellow striped scarlet. Pure scarlet, mixed. also Tricolor.  
**Tydaea**, fine Gesneraceous plants, mixed.  
**Veronica**, Finest window garden sorts, mx.  
**Vinca rosea**, excellent winter-blooming plants. Foliage evergreen, flowers very bright, freely produced. White Rose White with eye, Light Red, mixed.  
**Wigandia**, fine tropical plant, big leaves.  
**Zauschneria**, half hardy shrub, red spikes.

## SEEDS OF HARDY Shrubs and Trees.

These start tardily, and I do not urge my friends to buy them, as they may not wish to wait several months or several years for the plants. Sow where the bed will not be disturbed. These seeds are not tested.

Acacia Julibrissin. Hibiscus Syriacus, mixed.  
 Alanthus, Tree of Heaven. Hypericum canariensis.  
 Alnus quadrifolia. Ilex aquifolium.  
 Amorpha Canescens, dwarf. Kelreuteria paniculata.  
 " Fruticosa, purple. Laurus Camphora, Camphor  
 Ampelopsis Veitchi. Ligustrum Ibotum.  
 Amygdalus communis. Liquidambar Styraciflua.  
 Aralia spinosa (Japonica). Liriodendron tulipifera  
 Arbutus unedo. Loniceria Caprifolium, Mor-  
 Azalia pontica, also Mollis. rowii, Tartarica.  
 Berberis aquifolium, Thun- Lycium mixed.  
 bergi, Bealii, Vulgaris. Maclura—Osage Orange.  
 Bignonia radicans. Magnolia grandiflora, Con-  
 Broussonetia papyrifera spicua, Macrophylla.  
 Buddleya variabilis Mahonia aquifolia.  
 Buxus sempervirens, Box. Morus Nigra, Alba.  
 Callicarpa Americana. Negundo Aceroides.  
 Cal'canthus floridus, Præcox Pæonia Moutan (arborea)  
 Caragana arborescens. Paulownia Imperialis.  
 Carpinus Americana. Philomis fruticosa.  
 Ceanothus azureus. Photinia glabra.  
 Celastrus scandens. Pyrus Baccata.  
 Cephalanthus occidentalis. Quercus Coccinea, Illicifolia.  
 Cercis siliquastrum. Cana- Pubescens, Rubra, Sber.  
 densis, Red-bud. Rhamnus Alaternus.  
 Chionanthus virginica. Rhus coriaria, also Cut-leaf.  
 Cissus Heterophylla. Cotinus, Smoke tree.  
 Cladrastis tinctoria. Rosa Hiawatha, Rubiginosa.  
 Clematis flammula, Panicu- Pink Rambler, Rugosa.  
 lata, Viticella, Virginalapa. Ruscus Aculeatus, Racemosa  
 Colutea arborescens. Salix cuprea, Willow.  
 Cornus Florida. Panicula- Sorbus aucuparia.  
 ta, Alternifolia, Mas. Spartium Junceum.  
 Cratægus Oxyacantha. Sterculia Platanifolium.  
 Cryptomeria Japonica. Symphoricarpos vulgaris.  
 Cydonia Japonica. Racemosa.  
 Cytisus laburnum, albus. Syringa, White Lilac.  
 Desdemonium penduliflora. Purple Lilac.  
 Eleagnus angustifolia. Tilia Argentea, Platyphyllum  
 Euonymus Americana grandiflorus.  
 Japonica. Viburnum prunifolium, Op-  
 Fraxinus quadrangulatus. ulus, Acerifolium, Denta-  
 Genista Andreaana. tum, Lantana.  
 Gleditschia triacanthus. Vitis Vinifera, Cordifolia.  
 Gymnocladus Canadensis. Yucca Filamentosa.  
 Hamamelis Virginica. Wistaria sincensis.



## CHOICE VEGETABLE SEEDS.

I can supply Choice Vegetable Seeds of the kinds here listed at the prices attached. All of these seeds are fresh and tested, and can be relied upon. I offer them with entire confidence as to their vitality and quality. They are delivered free at the prices quoted.

- Artichoke**, Jerusalem, tubers, 20c per lb., prepaid; by express, at purchasers expense, \$1.00 per peck, \$3.50 per bu. The tubers are prolific and excellent for pickles; also for feeding stock.
- Artichoke**, Large Green Globe. A delicious French vegetable, the bracts of the immense flower heads being boiled and used as Asparagus. Bears second year. 1 pkt. 5c, oz. 35c. ¼ lb. \$1.25.
- Asparagus**, Palmetto: considered the best variety; large, early and of superior quality; also, Columbian Mammoth, Barr's Mammoth, Conover's Colossal. Per pkt. 5c, oz. 10c, ¼ lb. 30c. Two-year-old roots \$1.75 per hundred, by mail.
- Beans**, (Bush or Snap), Refugee, Early Stringless Green Pod, Black Wax, Early Mohawk; also, Improved Golden Wax, Red Valentine, Hodson's Kidney Wax, Weber Wax, Davison's White Kidney Wax, Extra Early Refugee. Per pkt. 5c, pint 40c, quart 75c.
- Beans**, (Pole), Old Homestead, Lazy Wife, Creaseback, Golden Cluster, Scarlet Runner; also, Speckled Cranberry. Per pkt. 5c, pint 50c.
- Beans**, (Lima), Seibert's Early, Early Jersey, King of the Garden, Large White, Carolina, Steva; also, Burpee's Bush, Henderson's, Dreer's. 1 pkt. 5c, pt. 40c, qt. 50c.
- At the prices named these Beans will be delivered by mail. For larger quantities write for prices.
- Beans**, (Bush), White Marrow-Shell Bean. Per pkt. 5c, pint 40c, quart 60c.
- Beet**, Improved Blood Turnip, Early Bassano, Crossby's Egyptian, Crimson Globe, Extra Early Eclipse, Edmand's Early, Long Blood-Red, Swiss Chard. Per pkt. 5c, oz. 10c, ¼ lb. 30c, 1 lb. \$1.00.
- Beet**, (for stock), Golden Tankard, Mammoth Red, Vilmorin's Improved Sugar; also, Norbiton Giant. Oz. 5c, ¼ lb. 15c, 1 lb. 40c mailed.
- Beet**, Stock, Oz. 10c, ¼ lb. 15c, 1 lb. 40c.
- Borecole**, Purple Cape, Large White French, Curled Green Dwarf, Per pkt. 5c, oz. 30c.
- Brussels Sprouts**, Dwarf Improved, Half Dwarf Paris Market. Per pkt. 5c, oz. 15c.
- Cabbage**, Early Jersey Wakefield, Early Spring, Dwarf Early Flat Dutch, Henderson's Early Summer, Early Winningstadt, Charleston Early Wakefield, All Head, Drumhead Savoy, Late Surehead, Late Flat Dutch, Late Danish Baldhead, Autumn King, Late Red Drumhead. Per pkt. 5c, oz. 12c, ¼ lb. 40c, 1 lb. \$1.50.
- Carrot**, Scarlet Horn, Chantenay, Long Orange, Oxheart; also, Danvers. Per pkt. 5c, oz. 8c, ¼ lb. 20c, 1 lb. 75c.
- Cauliflower**, Early Snowball. Per pkt. 10c, ½ oz. \$1.00. Veitch's Autumn. Per pkt. 5c, oz. 50c.
- Celeriac**, Large Smooth Pargue. Per pkt. 5c, oz. 12c, ¼ lb. 40c, 1 lb. \$1.50.
- Celery**, White Plume, Pink Plume, Giant White Solid, Rose-ribbed Paris, Golden Heart, Giant Pascal; also, Boston Market, Golden Self-Blanching. Per pkt. 5c, oz. 20c, ¼ lb. 60c, 1 lb. \$2.00.
- Chicory**, Large-rooted; leaves used as a salad; roots roasted and ground, largely used as a substitute for coffee. Per pkt. 5c, oz. 10c 1 lb. \$1.00.
- Collards**, True Georgia; leaves cooked as a substitute for Cabbage in the South. Per pkt. 5c, oz. 10c, 1 lb. \$1.00.
- Chervil**, curled. Per pkt. 5c, oz. 10c, 1 lb. \$1.00.
- Corn**, Early Giant, Country Gentleman, Improved Evergreen Sugar, New Golden Bantam, an early sort, thought by many to be the best early sweet Corn. Per 2-oz. pkt. 5c, ½ pt. 15c, 1 pt. 25c, 1 qt. 45.
- Corn**, (for popping), White Rice, Mammoth White Rice, Golden Queen, Pearl. Per 2-oz. pkt. 5c, ½ pint 20c.
- Corn-Salad**, Large-leaved; grown in fall for winter and spring use as substitute for Lettuce. Per pkt. 5c, oz. 10c, 1 lb. \$1.00.
- Cress**, curled, used as salad. Per pkt. 5c, oz. 10c, lb. \$1.00.
- Cress**, Water, Should be grown in shallow fresh water; used for garnishing and as "greens", per pkt. 5c, oz. 25c.
- Cucumber**, Early White Spine, Jersey Pickle, Long Green, Early Cluster, West India Gherkin. Per pkt. 5c, oz. 15c ¼ lb. 35c, 1 lb. \$1.00.
- Dandelion**, Large-leaved French; used as early greens. Per pkt. 5c, oz. 25c.
- Egg Plant**, New York Purple, Black Pekin, Early Delicata. Per pkt. 5c, oz. 35c, ¼ lb. \$1.25.
- Endive**, Golden Curled; also, White Moss, Green Curled, Broad-Leaved Batavia. Per pkt. 5c, ¼ lb. 50c. The leaves are used for garnishing, also as greens.
- Kale**, Dwarf Curled Scotch. Per pkt. 5c, oz. 10c.
- Kohl Rabi**, Early Purple Vienna; a choice sort, flesh, white and delicate. Per pkt. 5c, oz. 20c, 1 lb. \$2.00. A vegetable with Cabbage-like flavor.
- Leek**, American Flag, a sort of mild-flavored "Onion", smooth, solid, uniform thickness; boil, use in soups, or when young as "scallions". Per pkt. 5c, oz. 25c, ¼ 75c.
- Lettuce**, Early Curled Simpson, Big Boston, Golden Queen, Perfected Salamander, New York, Improved Hanson, Paris White Cos; also, Iceberg, Mammoth Black-seeded Butter, Speckled Dutch Butter, Grand Rapids. Per pkt. 5c, oz. 8c, ¼ lb. 30c, 1 lb. \$1.00.
- Mushroom spawn** (fresh), 1 lb. 20c, by mail; 8 lbs. \$1.00 expressed, not prepaid.
- Muskmelon**, Acme, Emerald Gem, Early Hackensack, Jenny Lind, Livingston's Tip Top, Rockyford; also, Paul Rose, Long Island, Beauty, Montreal Market. Per pkt. 5c, oz. 12c, ¼ lb. 35c, lb. \$1.00.
- Mustard**, White London, Chinese Curled, Southern Giant Curled. For salads and garnishing when young. Pkt. 5c, oz. 8c, lb. 60c.
- Okra**, Dwarf Prolific and Long Green; pods used for soups, stews, etc. Pkt. 5c, oz. 8c, lb. 50c.
- Onion**, Australian Brown, Wethersfield Red, Early Flat Red, Prize Taker, Silver Skin, White Portugal, Yellow Danvers, Southport Yellow Globe; also Early White Pearl, White Barletta. Per pkt. 5c, oz. 20c, lb. \$2.25.
- Parsley**, Extra Curled, Champion Moss Curled, Beauty of Parterre; also Tripple Curled. Pkt. 5c, oz. 8c, lb. 75c.
- Parsnip**, Guernsey; decidedly the finest sort. Pkt. 5c, oz. 8c, lb. 50c.
- Pepper**, Columbus, Cayenne, Long Red, Long Yellow, Bell or Bull Nose, Ruby King, Chinese Giant, Cherry, Japan Cluster, Golden Dawn. Mixed pkt. 5c, oz. 20c.
- Pumpkin**, Cheese, Connecticut Field; also Tennessee Sweet Potato, Mammoth Potiron. Pkt. 5c, oz. 8c, lb. 40c.
- Peas**, Alaska, Bliss Everbearing, Abundance, Champion of England, Marrowfat, Tall Melting Sugar, Dwarf Melting Sugar; also Gradus or Prosperity, Nott's Excelsior, McLean's Little Gem, Senator. Pkt. 5c, ½ pt. 15c, pt. 30c, qt. 50c.
- Radish**, Early Long Scarlet, Early Scarlet Turnip, Long Scarlet White-tipped, French Breakfast, Golden Globe, White Strasb'g, White Turnip, Long Cardinal, White Icicle, Chartier, California Mammoth White, Rose Winter; also, White Chinese, Long Black Spanish. Pkt. 5c, oz. 8c, lb. 50c.
- Rhubarb or Pie Plant**, Victoria, Pkt. 5c, oz. 15c, lb. \$1.25.
- Salsify**, Mammoth Sandwich Island. Pkt. 5c, oz. 12c, ¼ lb. 45c, lb. \$1.60.
- Spinach**, Long Standing, Prickly Seeded, Victoria; also, Savoy-leaved. Pkt. 5c, oz. 10c, lb. \$1.20.
- Squash**, Golden Summer Crookneck, Extra Early Bush, Delicata, Mammoth Chili, Hubbard, Fordhook; also, Boston Marrow. Pkt. 5c, oz. 10c, ¼ lb. 25c, lb. \$1.00.
- Note The Early Delicata Squash is the best all around Squash. It is fine to cook green, and will keep well for winter use. It is not large, but each vine bears several squashes, and hence it is very productive. Seeds can be planted in early June, and the squashes will not then trouble the vines. Fine for sauce and pies and for baking. By all means try this superb squash. Special prices, oz. 6c, ¼ lb. 15c, 1 lb. 40c.
- Tomato**, Atlantic Prize, Improved Beauty, Earliana, New Stone, Dwarf Stone, Ignotum, Ponderosa, Golden Queen, Golden Trophy, Pear-shaped Yellow, Semperfructifera; also, Matchless. Per pkt. 5c, oz. 25c, ¼ lb. 60c.
- Turnip**, Flat Dutch, Scarlet Kashmir, Extra Early White Milan, White Egg, Golden Ball, Purple Top, White Globe, Amber Globe, Orange Jelly, Long Island Improved Purple Top Rutabaga or Swede. Pkt. 5c, oz. 8c, ¼ lb. 20c, lb. 50c.
- Watermelon**, Cole's Early, Phinney's Early, Early Fordhook, Mountain Sweet, Kolb's Gem, Preserving Citron, Sweet Heart, Kleckley's Sweet, Ice Cream, Florida Favorite. Pkt. 5c, oz. 8c, 1-4 lb. 25c.
- Herbs**, Anise, Large Green Sweet Basil, Bush Green Basil, Borage, Balm, Catnip, Coriander, Dill, Large Sweet Fennel, Hoarhound, Lavender, Pot Marjoram, Mustard, Rosemary, Winter Savory, Broad-leaved Sage, Summer Savory, Saffron, Tansy, Broad-leaved Thyme, French Summer Thyme, Tarragon, Wormwood, Lovage, Caraway, Pennyroyal, Hyssop. Pkt. 5c, oz. 25c. Special mixture of herbs, pkt. 5c, oz. 25c.
- Miscellaneous**, Evergreen Broom Corn, 1 lb. 20c, mailed; 25 lbs. or more, by express, not prepaid, 10c, per lb. White Dutch Clover for bee pasture and lawns, oz. 10c, lb. 80c.
- Park's Superior Lawn Grass**, the best of all lawn grass mixtures; makes a fine lawn the first season, and remains permanent. By mail, oz. 5c, lb. 40c; by express, not prepaid, peck, (5 lbs.) \$1.50. Five bushels will seed an acre, or a lb. will seed 500 square feet. For renovating a lawn sow half this quantity.
- Quassia Chips** A tea made from these is a sure remedy for Mealy Bug. Apply as hot as the hand will bear, by spraying or sponging. Every window gardner should have a supply, per lb. 30c mailed.

# Choice Flowering Bulbs, Tubers and Plants.

Some of our Finest Summer Flowers grow from bulbs, tubers and fleshy roots. I offer a Choice Collection. Those marked with a star are hardy; the others need protection at the North. Always add a few of these fine flowers to your order.

**Agapanthus umbellatus**, African Lily, vigorous Lily-like plants with evergreen strap-like foliage, and umbels of blue or white flowers on a strong scape a foot high. Shift into a larger pot as the plant grows, or the roots will burst the crowded pot. Price 25 cents.

**Amaryllis**, Aigberth Giant, the finest of the Amaryllis. Immense flowers, lily-like in form, at the summit of a strong scape. Various mixed colors, 75 cents each. White slightly marked at the throat also scarlet with star and rich crimson, each \$1.00.

**Amaryllis Johnsoni**, the well-known old-fashioned Amaryllis, red with white bands through the flower. 35 cts.

\***Amaryllis Halli**, hardy, fine bulbs, 30 cents each. This is known as *Lycorus Squamigera*. Highly recommended.

\***Anemone Japonica**, elegant late fall flowers, coming just before the hardy *Chrysanthemums*. Grow two feet high, with large, Daisy-like flowers, very beautiful. Honorable Jobert white, Rosea rose, Whirlwind semidouble white, Queen Charlotte semidouble rose, 20 cents each.

\***Anemone Fulgens** fl. pl., the beautiful double scarlet Wind Flower. This is known as Peacock Anemone, and a bed of it is very attractive. It likes shade, and a rich, porous soil, on a northern slope. 8 cts. each, 80 cts. per doz.

**Antholyza**, A South African plant of the Iris family. Two feet high, bearing handsome flowers. 15c. \$1.50 a doz.

**Apedistra lurida variegata**. This is a graceful foliage pot plant, almost hardy and of the easiest culture. It is evergreen, the leaves strap-shaped, arching and handsome. In the variegated sort they are attractively striped creamy white. Price 25 cents, small plants. The plain green-leaved, 15 cents each, malled.

**Begonia Cristata Double**. I can now supply double-flowered *Begonia Cristata* in Rose, Scarlet, White, Yellow, Red, and Orange colors. Price 15 cents each, or the lot of six varieties for 75 cents. These are new, and I have never before been able to obtain them. The single-flowered, which are also new and beautiful are offered on the next page, which see.

**Belladonna Lily**, rose-colored, tubular flowers in umbels, 25 cents each.

**Caladium esculentum**, a grand foliage plant, doing well in dense shade. Give it rich, sandy soil, and water freely while growing. Under good conditions stems will be five feet long, bearing leaves two to three feet long. Start the tubers early, and water sparingly till growth begins. Large tubers 20 cts., \$2.00 per dozen. Smaller 10 cts. \$1.00 per dozen. Smallest 5 cts., 50 cts. per doz.

**Caladium**, Fancy-leaved, very beautiful foliage pot plants at the north, and fine for growing out at the south. The leaves are richly blotched, spotted and veined with white or pink or carmine, some having a background of green or white or flesh, and some showing rich carmine with a narrow margin of green. They are among the most beautiful of foliage plants. They like a shady situation and moist atmosphere. Pot in rich, very sandy soil with good drainage, and keep well watered while growing. Get the plants in April or May to insure success. I offer the following splendid named sorts:

**Blanche Wise**, glossy white center with large blood-red spots, gray-white zone, green border, strong grower, 25c.  
**Macahyba**, very large, deep green leaves with transparent splashes of white and rose, red veins, 25 cents.  
**Harold**, green ground, spotted white, center of leaf and ribs deep red, with gray zone. Medium in growth. 20 cts.  
**Coacoochee**, bright deep pink shading to metallic green, becoming almost white with green border. 25 cents.  
**Votuverava**, very large leaves, light green, with many transparent bluish white and pink spots, light green ribs. A beautiful sort. 25 cents.

**Calla**, Large-flowered White, fine blooming-sized tubers, 15 cts. each, \$1.50 per dozen. C. Perle von Stuttgart, an improved Calla bearing large foliage and large handsome flowers, 20 cts. each. C. Elliottana, pure golden yellow, very beautiful, new and rare, 25 cts. each.

\***Crinum Powellii**, the new hardy Crinum, a foot high, with large trumpet-like rose and white flowers in an umbel, either color, 25 cents, \$2.50 per dozen.

**Dahlia**, Double, finest named varieties, White, Scarlet, Rose, Crimson, Purple, Yellow, Pink, and Variegated, each 15 cents, \$1.50 per dozen.

\***Funkia ovata**, Sieboldii, Undulata variegata, Fortunei, etc. 15 cents each, \$1.50 per dozen.

**Canna**. This is a fine bedding plant, continuous-blooming and beautiful the entire season. Plants grow four feet high, bearing enormous trusses of bright flowers.



Make the bed in a sunny place, the soil deep, rich and sandy, and set the plants 15 inches apart. Mulch the bed when hot weather comes, and keep well watered, as the plants are semi-aquatic. King Humbert, carmine-scarlet, is one of the finest for body of bed, 19 plants, and Richard Wallace, yellow, 3 ft. high, for the border, 18 plants. The 37 plants will fill a bed 8 feet across, and make a glorious display. I will send the lot, started plants, in May, for \$2.50, delivering by parcel post or by express, shipping to any point east of the Mississippi river. Single plants, many fine named sorts, 15 cents each.

**Hemerocallis**, Day Lily, Sieboldii, early flowering, golden blooms in clusters. Flava, the Lemon Lily, 2 feet, yellow, fragrant. Thunbergii, similar to Flava, but a month later. Fulva, 2 ft. large, orange-scarlet. Kwanso, similar, but double. Aurantiaca, new, large-flowered, golden. Disticha fl. pl., double, 18 inches high. Any sort 15 cents each, \$1.50 per dozen.

\***Galtonia Candicans**, the summer Hyacinth, 10 cents each, \$1.00 per dozen.

**Gladiolus**, French Hybrids in finest mixture, not large, but blooming sized bulbs, 3 cents each, or \$2.00 per hundred, prepaid. Groff's Hybrids, large bulbs, in finest mixture, 5 cents each, \$4.50 per hundred, post paid.

**Gladiolus**, Named, Augusta, Lily Leman, White Glory of Holland lavender, Klondike yellow, Willie Wigman rose, Baron Hulot blue, America pink, Brechnleyensis scarlet, Halley, salmon. Mrs. F. King, scarlet. 10 cents each, \$1.00 per dozen.

**Gladiolus Primulinus**, see bottom of next page. Pure golden yellow, 10 cents each, \$1.00 per dozen. Primulinus Hybrids, new hybrid varieties, mixed colors 8 cents each, 80 cents per dozen.

**Gladiolus trimaculatus**, spotted, grows two feet high, flowers in spikes, 10 cents each, \$1.00 per dozen.

**Iris Germanica**, blue, pink. Florentina, white, purple, blue. Siberica mixed. Mme. Chereau. Pallida Dalmatica. Pumila mixed. Fetidissima variegata. Any sort 15 cents each, \$1.50 per dozen.

\***Lilium Auratum**, gold-band Japan Lily, huge, spotted, fragrant flowers. Large bulbs, 30c. each, \$3.00 a doz.

\***Lilium Henryii**, grand, new, hardy sort, 10 ft. high when in rich soil and well established, 50c. each, \$5 a doz.

\***Lilium Lancifolium** Album, white. Rubrum red. The finest and hardest of Lillies, improving with age. Melpomene, like the others, but darker. 25c. each, \$2.50 a doz.

**Madeira Vine**, a beautiful porch vine, the foliage rich and massive, clean and not troubled with pests. Flowers white in graceful racemes, richly scented, in great profusion. Climb 30 feet. Almost hardy. 5 cts. each, 50 cts. a doz.

**Nelumbium luteum**, big, hardy, Egyptian Lotus, huge umbrella-like leaves, giant flowers. Price, in May, \$1 each.

**Oxalis rosea**, fine for baskets or edgings. Also Buttercup Oxalis, Bowl, Versicolor, Cernua, 5c. each, 50c. a doz.

\***Paony**. Chinese, fine named sorts, Double, White, Pink, Red. Separate or mixed, 15c. each, \$1.50 per dozen.

\***Paony**. Officialis, old-fashioned, Red, Pink, mixed, 15 cents each, \$1.50 per dozen.

\***Tritoma**, Red-hot Poker, *Uvaria grandiflora*, spikes of orange-scarlet bloom, showy, 3 ft. 15c. each, \$1.50 a doz.

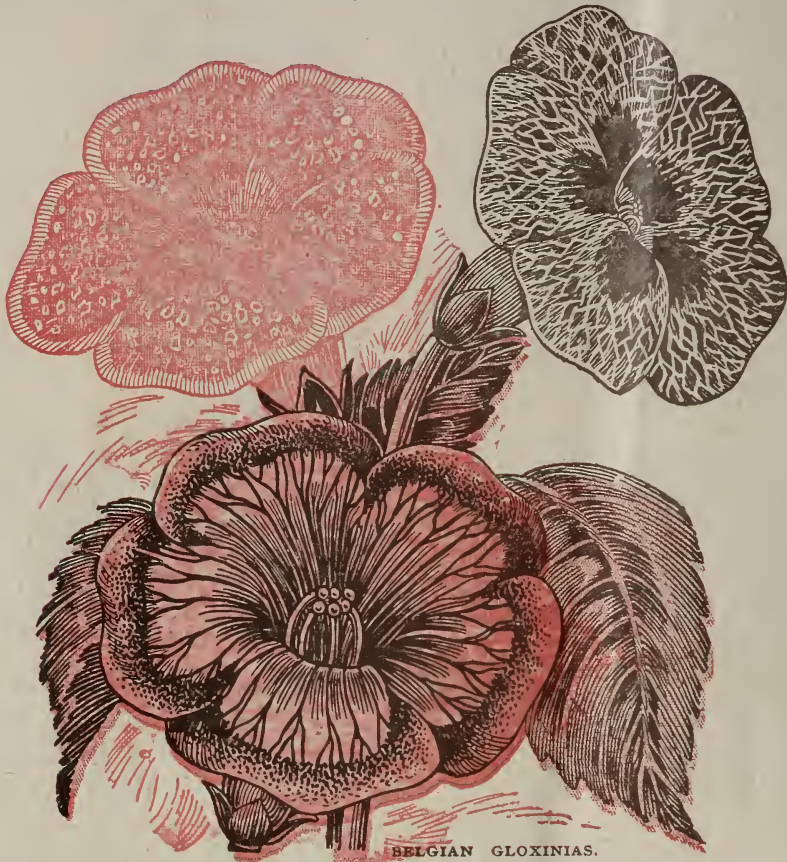
**Tuberose**, Excelsior, 2 feet high. Spikes of double, exquisitely-scented white flowers. Large bulbs 4 cts. each, 40 c. a doz. Smaller but blooming size, 3c. each, 25c. a doz.

\***Tricyrtus hirta**, Japanese Toad Lily. 2 ft. high, with lilac spotted flowers in fall, likes shade. 10c ea., \$1.00 a doz.

\***Water Lily**, large, white with golden center, beautiful and fragrant. 20 cents each, \$2.00 per dozen.

# SPLENDID TUBEROUS BEGONIAS.

**I** HAVE a fine collection of Tuberous Begonias of the best Belgian strains which I offer at a bargain, because the English Government will not allow flowering bulbs, plants or tubers to be shipped into its country, and the price to American Importers is low in consequence. The tubers I offer are of the best size, about three inches in circumference, and will produce the finest flowers.



BELGIAN GLOXINIAS.

## BELGIAN GIANT DOUBLE-FLOWERED BEGONIAS.

Splendid Rosy Pink.	5 cents	Splendid Pure White.	5 cents	Splendid rich Crimson.	5 cents	Splendid pure Yellow.	5 cents
Splendid rich Orange.	5 cents	Splendid Shade of orange-red or scarlet	5 cents				

The entire collection, 7 splendid Tubers, including a subscription to Park's Floral Magazine for a year, only 30 cents; or, without Magazine 25 cents. Club of five \$1.50, and to the one who sends the Club I will send the Magazine a year, the Seven Double Begonias, and 12 fine mixed Gladiolus. Each lot of bulbs will be mailed separately. Order now.

## BELGIAN FRINGED BEGONIAS.

This is an elegant new race of Tuberous Begonias, the flowers very large with fringed petals. I offer the tubers of the most desirable size, about three inches in circumference, in both single and double varieties, in six superb colors, as follows:

Single-fringed.			Double-fringed.				
Pure Pink,	5 cts.	Pure Crimson,	5 cts.	Pure Pink,	10 cts.	Pure Crimson,	10 cts.
Pure White,	5 cts.	Pure Orange,	5 cts.	Pure White,	10 cts.	Pure Orange,	10 cts.
Pure Copper,	5 cts.	Pure Yellow,	5 cts.	Pure Salmon	10 cts.	Pure Yellow,	10 cts.
The collection of six Tubers 25 cents				The collection of six Tubers 50 cents			

## BELGIAN BEGONIA CRISTATA, NEW.

This is a beautiful New Tuberous Begonia, each flower showing a crest or crown in the center. I have but a limited quantity of these, but offer them at a low price. They are very rare.

Single-flowered Pink,	10 cts.	Single-flowered White,	10 cts.	Single-flowered Salmon,	10 cts.
Single-flowered Crimson,	10 cts.	Single-flowered Orange,	10 cts.	Single-flowered Yellow,	10 cts.

I offer the entire collection of six Begonia Cristata in six fine colors for only 50 cents.

**Begonia Marmorata.**—This is a Single-flowered Begonia, with large, broad petals beautifully marked or marbled. Thus far it is the only Begonia with variegated flowers known. It is easily grown, and greatly admired. 10 cents each, six tubers for 50 cents.

**Belgian Gloxinias.**—These are of the finest Giant-flowered strain, and I offer them as follows:

Pure White,	10 cts.	Superb Spotted,	10 cts.	Blue with White Margin,	10 cts.
Pure Blue,	10 cts.	Superb Crimson,	10 cts.	Red with White Margin,	10 cts.

The entire collection of six splendid Gloxinias in six fine varieties, only 50 cents. See Engraving.

**Gladiolus Primulinus,** the new and elegant rich pure yellow Gladiolus recently found in South Africa, fine bulbs 10 cents each, \$1.00 per dozen. These Tubers and Bulbs are now on hand and ready to mail. Order early, before the stock is exhausted. Address

**GEO. W. PARK, LaPark, Pa.**