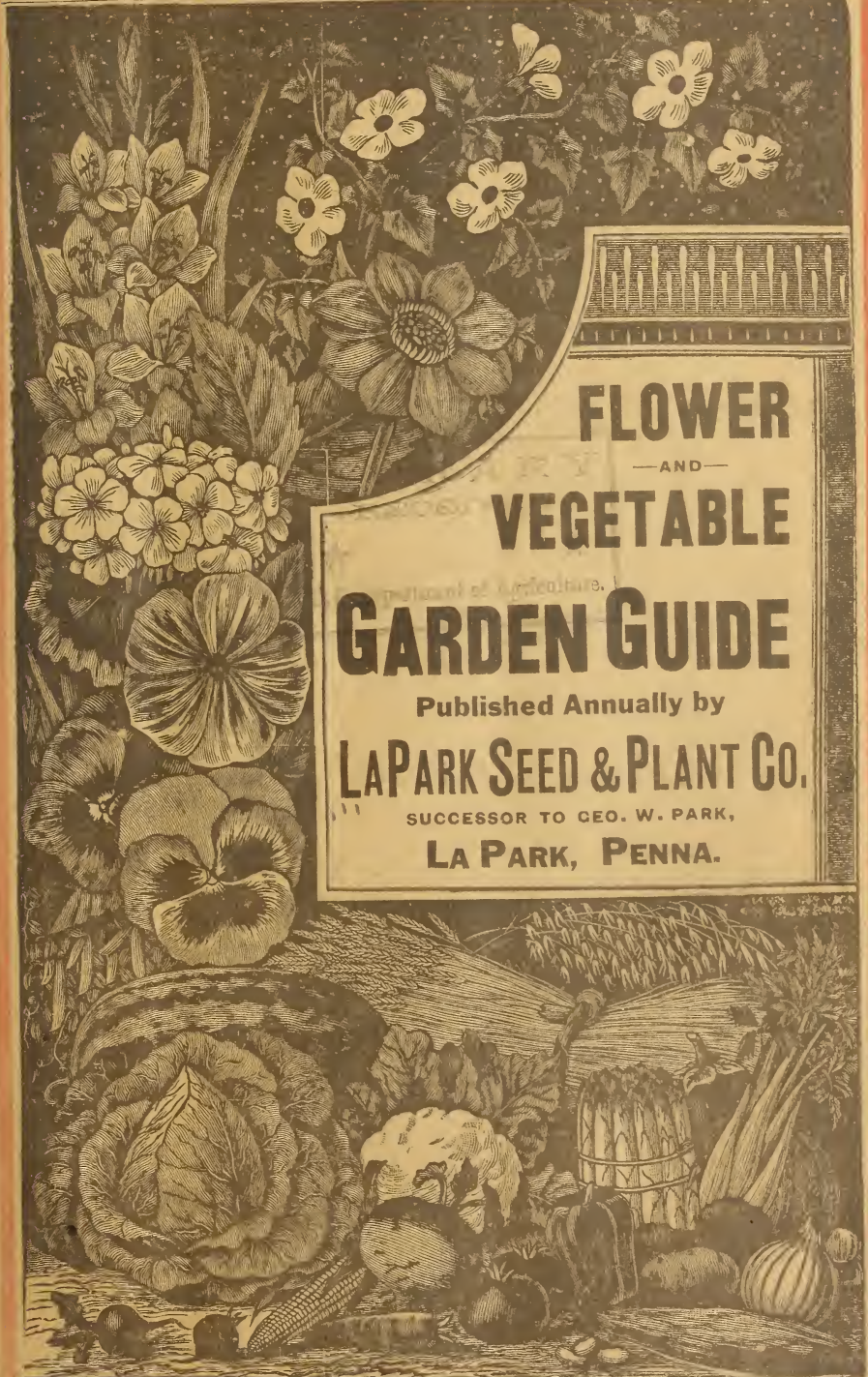


Historic, Archive Document

Do not assume content reflects current scientific knowledge, policies, or practices.

2.73
LaPark Tested Seeds. Season of 1918.



FLOWER
—AND—
VEGETABLE

Department of Agriculture.
GARDEN GUIDE

Published Annually by

LAPARK SEED & PLANT CO.

SUCCESSOR TO GEO. W. PARK,

LA PARK, PENNA.

Announcement from Mr. Park.

TO MY ESTEEMED PATRONS:—After supplying for many years to the flower-loving public, seeds, bulbs and plants to beautify their gardens and homes, I have decided to retire from that delightful business, and have disposed of my interests to Mr. James W. Bryan, who has associated with him Messrs. J. G. Fisher and J. H. Fisher, who will continue the work under the name of LaPark Seed and Plant Company.


I believe these men to be honorable in their dealings, and that they will use their best endeavors to satisfy and please their patrons, and I bespeak for them the same liberal patronage and consideration that has been accorded to me throughout the many years of my business career. I shall continue to greet my friends through the columns of Park's Floral Magazine, as I shall remain its Editor, at least for a while, but the subscription and business departments of the Magazine will be conducted by the new firm.

My friends, it is not without feelings of sadness that I part with you in a business way. The many beautiful letters that have accompanied your orders from year to year have developed a warm and true friendship that I shall ever cherish; and the happy experiences throughout the years of my business career—from the time I started as a youth, at "the old homestead in the vale," until I leave beautiful LaPark, will be to me a joy in memory as long as life. Adieu, my dear friends. May success and pleasure ever result from your floral work, and may no thorns or briars obstruct life's pathway; but may that pathway for each one of you be carpeted with the loveliest of mosses, and brightened with the sweetest and richest of flowers.

LaPark, Pa., Feb. 20, 1918.

GEO. W. PARK.

Announcement by the New Management.

 TAKING CHARGE of the extensive business in Seeds, Bulbs and Plants that through many years of industrious effort has been built up by Mr. Park, we wish to assure the patrons that they can depend upon the same honest, square, liberal and efficient service in filling their orders that they have enjoyed for so many years at the hands of Mr. Park. It is our plan and policy to conduct the business as closely as possible along the same lines as Mr. Park has carried on the business.

Owing to the war causing an abnormal demand for the products of the Vegetable garden we are giving a prominent place in our Catalogue to a list of the best kinds of Vegetable Seeds, and we hope to receive a liberal share of your orders for these seeds. As our seeds are all tested, you can always depend upon them for vitality, and the quality is assured by the stock being the product of reliable growers. We therefore invite your orders with confidence that you will be more than satisfied—delighted—with the seeds we supply. Our prices you will find very reasonable, and we ask you to compare them with the prices of other reliable seedsmen.

Flower Seeds have been a speciality with Mr. Park, and his name has been a synonym for quality. The flower seeds we offer this year are practically all of his stock, and can be relied upon. We propose to keep up the standard of these seeds in vitality and quality, and we solicit your orders with the assurance that you will be pleased with our seeds and our treatment.

About Terms: We guarantee the safe arrival of your letters. We guarantee the safe arrival of the seeds and bulbs mailed you. We fill all orders promptly, and if mistakes occur we cheerfully correct them. And we guarantee the safe arrival of money—all sums of \$1.00 or more being sent by Money Order, Draft or Registered Letter. Smaller sums send in 3-cent postage stamps. You thus see that our goods are brought right to your door.

Park's Floral Magazine.—You all know Park's Floral Magazine. It is original, practical, fully illustrated, and the most widely circulated and popular journal of its class in the world. Mr. Park is still its editor, and will take pleasure in answering in its columns any questions about flowers and their culture. We wish to say, however, that Mr. Park has turned over the subscription, advertising and business departments to us and we shall treat liberally all who get subscriptions or introduce the Magazine among their friends. Price 10c a year, 3 years 25c. Write to us about terms, premiums, etc. But matter for the Editor address "Editor of Magazine", LaPark, Pa.

We solicit your orders for seeds and your subscriptions to the Magazine, and hope to hear from you. Your favors will have our best attention. Address

LaPark Seed and Plant Co., Successor to Geo. W. Park, **LaPark, Pa.**

Our Tested Vegetable Seeds

FOLLOWING the wishes of the Government, and our own ideas as well, we are giving considerable more space this year to Vegetable Seeds, and we hope that many of our friends who have never before even tried such a thing will this year make a garden.

As the green things begin to grow, your interest in them will also grow, and after a while you will have the satisfaction of seeing the evidence of your part in the great world struggle for Liberty in the form of delicious vegetables.

So much has been said about the great shortage of seed and the difficulty of obtaining supplies, that we need add nothing on that point. Our purpose has been to secure the varieties of vegetables that are essential, and to limit the kinds to the strains we knew to be preferable. We have carefully tested all the seeds offered and have listed nothing that has not come right up to the mark in vitality and healthy growth.

So that when you buy LaPark Seeds you know you will receive seed you can depend upon absolutely.

Our Prices

Every seedsman has been forced this year to pay from twice to many times as much for seed as in the past. Like all the rest, we have, therefore, been forced to increase our selling prices, but in every case we have held the increase right down to barely enough to cover the advanced cost to us. We can assure you that good seed, seed worth your while to plant, cannot be sold at lower prices.

Presents for Vegetable Seed Customers

When your order at one time amounts to 50 cents, you may select 1 extra 5 cent package free.

On all orders amounting to 75 cents, select 2 extra 5 cent packets free.

On orders for \$1.00 you are entitled to choose 3 extra 5 cent packets free.

If you order \$2.00 worth, you may select 7 extra 5 cent packets free, and on each additional 50 cents worth over and above \$2.00, we will send 1 extra 5 cent packet free.

These extra packets we give to induce customers to make up their order all at one time, instead of sending in for a packet or two at a time as they happen to think of it.

We reserve the right to ship orders by mail or express, which-ever seems wiser to us in each case, but it is to be understood that

We Pay All Postage or Express Charges,

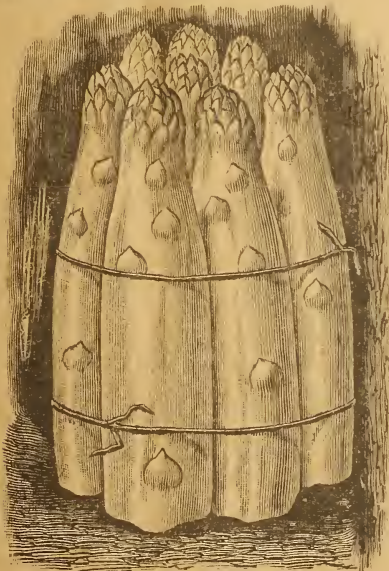
except where the printed offer expressly states that the receiver must pay the charges, which is very rarely the case, as we find it more convenient to customers to deliver their seeds prepaid.

We shall be glad if you will send in your orders as promptly as possible.

Always address **LaPark Seed and Plant Co., LaPark, Pa.**

ARTICHOKE, Jerusalem. Tubers 25c per pound prepaid by Express. \$1 per peck, or \$4 per bushel by express, purchaser to pay express charges. Excellent for pickles. Also for feeding stock. A delicious vegetable boiled like potatoes, served with a cream sauce. Plant like potatoes.

Large Green Globe. A delicious French vegetable. The bracts of the immense flower heads being boiled and eaten like asparagus. Bears second year. 1 packet 5 cents; ounce 40 cents; $\frac{1}{4}$ pound \$1.25.



A Bunch of "Palmetto."

ASPARAGUS

Palmetto. Very prolific. Considered the best variety. Large, early and of superior quality.

Columbia Mammoth. Tender, large, white stalks.

Barr's Mammoth. Large, light-colored stalks with few scales.

Conover's Colossal. Extra large stalks of excellent quality.

All varieties, pkt. 5 cts.; oz. 10 cts.; $\frac{1}{4}$ lb. 30 cts.

Sow seed thinly in rows 1 foot apart. Thin plants to 3 or 4 inches. Following Spring set 6 inches deep in well worked soil, well manured. If soil is not sandy add plenty of sifted coal ashes. Manure every Fall.

Asparagus Roots. Of any of these varieties, two years old, \$1.75 per 100 by parcel post, postage paid.

BRUSSELL SPROUTS

Sow seed thinly in drills early in June. When plants are 6 inches high, transplant to rich soil, 18 inches apart, in rows 2 feet apart in gardens, 3 to 4 feet in field, in rich soil. A delicious Fall and Winter vegetable when all other green vegetables are frozen up.

Dwarf Improved. A variety of most excellent quality. Packet 5 cents; ounce 25 cents.

Half Dwarf Paris Market. Bears a splendid crop of round, hard sprouts. Packet 5 cents; ounce 25 cents.

BORECOLE or KALE

Cultivate same as cabbage. Excellent Winter greens. Improved by frost. An ounce makes 150 foot row.

Dwarf Green Curled Scotch. Leaves very large, deeply curled; tender and of delicate flavor. Packet 5 cents; ounce 20 cents.

Large White French. Another good variety. Packet 5 cents; ounce 20 cents.

Purple Cape. A standard variety that is preferred by many on account of its attractive purple colored leaves. Packet 5 cents; ounce 20 cents.

4) BEANS. Green-Podded---Dwarf or Bush Snap



The Famous Stringless Green-Pod

Plant at beginning of warm, settled weather, and at intervals of two weeks until August for constant supply. Beans 3 to 4 inches apart in rows 1½ to 2 feet apart; cover 2 inches deep. Hoe frequently but only when leaves are dry. A pint will sow 75 feet of row.

Early Stringless, Green Pod. Very hardy and early. Wonderfully productive. Pods very round, straight, long and meaty; tender, brittle, fine-flavored and entirely stringless. One of the very best green-podded varieties. Packet 5 cents; pint 40 cents; quart 75 cents.

Early Red Valentine. Very much like the Stringless Green-Pod. Hardy and early. Pods green, round and very fleshy of unsurpassed tenderness and practically stringless. Delightful flavor. Plants grow from 15 to 18 inches high and are filled with beans. Packet 5 cents; pint 40 cents; quart 75 cents.

Extra Early Refugee. A green-podded variety that produces a crop in seasons when other varieties fail. Fully two weeks earlier than the Refugee or 1000 to 1. Pods are solid, fleshy, nearly round, 5 inches long, brittle and mild in flavor and free from strings. Very prolific and especially good for canning. Packet 5 cents; pint 40 cents; quart 70 cents.

Refugee or 1000 to 1. An old-favorite green bean, with handsome, tender pods. Preferred by many for pickling. Very productive. Packet 5 cents; pint 40 cents; quart 70 cents.

Early Mohawk. Extremely hardy, so may be planted very early. Long, flat, straight pods of good quality. Matures within 48 days of planting. One of the good older varieties. Packet 5 cents; pint 40 cents; quart 75 cents.

BEANS. Dwarf or Bush Wax Podded or Butter.

Webber Wax. The vine is strong, holding the pods well up. Pods are a beautiful bright yellow, long, rather round, very meaty and of delicious flavor. Matures very early. Packet 5 cents; pint 40 cents; quart 70 cents.

Improved Golden Wax. Handsome, long, thick, fleshy, clear golden yellow pods, nearly straight. Tender and brittle, stringless and of good flavor. Reliable and very prolific, whether planted in Spring, Summer or Fall. Rust proof. Packet 5 cents; pint 45 cents; quart 80 cents.

Black Wax. A very early variety that bears a large crop of fine quality. The pods are a deep golden color, about 5 inches long, quite round, meaty, brittle and stringless. Packet 5 cents; pint 40 cents; quart 70 cents.

Hodson Wax. Unusually vigorous plant, with heavy crop of long, meaty pods, 7 to 8 inches, of waxy cream-yellow. Exceptionally brittle and tender. Stringless when picked for the table. Packet 5 cents; pint 45 cents; quart 75 cents.

LIMA BEANS

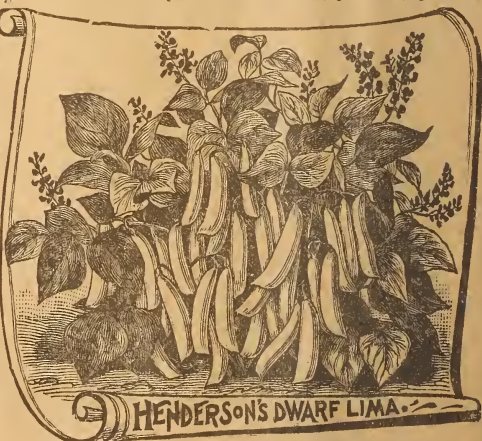
In home gardens rows and hills may be somewhat closer than in fields, because the cultivation is usually by hand and more frequent, and space is generally limited. We give cultural directions for home gardening. The experienced trucker so often has little 'kinks' of his own that he follows. For Bush Limas make rows 20 inches apart and set beans eye down six inches apart, cover two inches deep. A top dressing of hen manure will do wonders. A pint will plant 50 feet.

For all Pole Beans make hills 3 to 4 feet apart both ways. Use poles 7 to 10 feet high set firmly in hill before planting. Plant 4 to 5 beans to a hill. When Limas come up thin to leave only 3 in a hill. Pinch ends of vines when they grow above poles. A pint of Limas plants from 80 to 100 hills. A pint of other varieties will make twice as many.

Burpee's Bush Lima. Undoubtedly the best large bean Bush Lima grown. Stout, sturdy bushes, 18 to 20 inches high, branching out so that plants are from 2 to 3 feet in diameter. An immense yielder, pods and beans both large. Flavor most delicious. Packet 5 cents; pint 50 cents; quart 80 cents.

Henderson's Bush or Dwarf Lima. Really the only difference is that the Henderson is a smaller bush, producing a smaller pod and bean, of rich, delicious, buttery flavor. Packet 5 cents; pint 45 cents; quart 80 cents.

Dreer's Bush Lima. The beans grow close together in the pod and are thick, sweet and juicy. Productive and dependable. Pkt. 5 cts; pt. 45 cts; qt. 80 cts.



King of the Garden Pole Lima. A favorite variety that produces large pods, with often five or six extraordinarily large beans to the pod. Excellent quality and easily shelled. Packet 5 cents; pint 45 cents; quart 80 cents.

Seibert's Early Pole. An early Pole Lima for which we have many orders. Packet 5 cents; pint 45 cents; quart 80 cents.

Early Jersey Pole. Very early, with large tender beans. Pkt. 5 cts.; pt. 45 cts.; qt. 80 cts.

Large White. The old standard Pole Lima. Both pods and beans large. Packet 5 cents; pint 45 cents; quart 80 cents.

As a table food Lima Beans should be used more extensively. They are not difficult to grow or prepare, and are most delicious and nourishing. Eat plenty of beans of all sorts and you'll not miss meat very much.

BEANS. Pole or Climbing

Old Homestead or Kentucky Wonder. Most popular and best green-podded snap Pole Bean. Is 10 days earlier than others and wonderfully productive. If beans are picked regularly vines will produce in continued abundance from early July until frost. Pods 6 to 8 inches long, stringless, plump, round and almost solid meat. Tender and of delicious flavor. Also used as a Shell Bean. Packet 5 cents; pint 40 cents; quart 70 cents.

Lazy Wife's. Pods are produced in great clusters, 5 to 7 inches long, broad, thick, fleshy and stringless, with a rich buttery flavor. One of the very best Green-podded Pole Beans. Packet 5 cents; pint 40 cents; quart 70 cents.

Early Golden Cluster Wax. The finest of all the Wax Pole Beans. Large, flat, golden-yellow pods, 6 to 8 inches long, and in clusters of from 3 to 6 from top of vine to ground. Delicious flavor. Packet 5 cents; pint 50 cents; quart 80 cents.

Speckled Cranberry. Short, broad, pale green pods, becoming streaked with red as they near maturity. Used either green or dry. Packet 5 cents; pint 40 cents; quart 75 cents.

Scarlet Runner. Every one knows this old favorite vine with its dazzling scarlet flowers, but every one does not know that the half-grown pods make fine snaps, or that the beans may be used shelled. Packet 5 cents; pint 40 cents; quart 75 cents.

White Marrow Shell Bean. Good either as a green bean, or shelled for Winter's use. Packet 5 cents; pint 40 cents; quart 70 cents.

Don't forget that at the prices we quote we deliver all beans to you postpaid.

CARROTS FOR THE TABLE

Carrots should be more generally eaten because of their food value. They contain a very large amount of starch, the main constituents of both bread and potatoes. They are also rich in sugar. Very easily grown, and insects do not bother them. Be sure to plant Carrots this year.

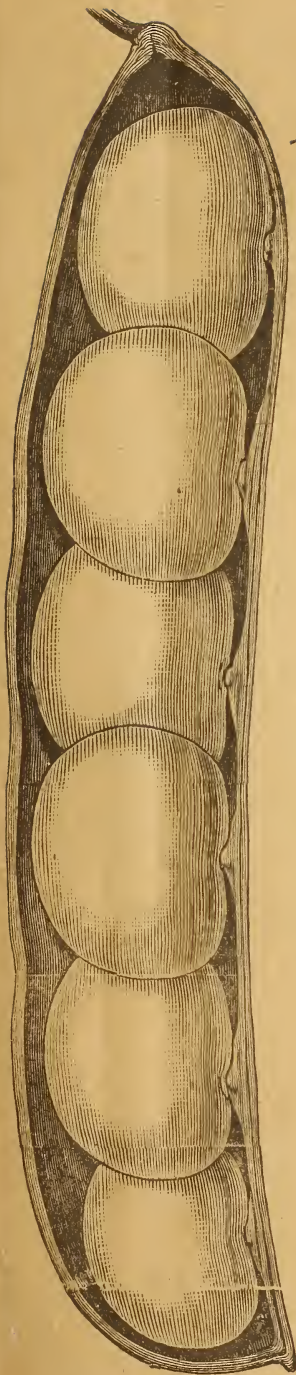
Sow thinly in shallow rows, early in the Spring, and once each month until July 15th. Rows 15 to 20 inches apart, and Carrots thinned to 2, 3, and even 4 inches apart for large varieties. Firm the soil well down when seed is planted. An ounce plants 100 feet.

Early Scarlet Horn. A favorite and one of the very best early sorts. Grows quickly. Roots about 3 inches long, reddish-orange, tender and of good flavor. Packet 5 cents; ounce 20 cents; ¼ pound 60 cents; 1 pound \$2.00.

Chantenay, or Model. A large half-long variety, gently tapering to the stump root. Flesh tender, fine grained, free from hard core and of a deep golden orange. Excellent for Winter. Packet 5 cents; ounce 20 cents; ¼ pound 60 cents; 1 pound \$2.00.

Oxheart or Guerande. Especially good for Spring and early Summer. A large, half-long, sweet, tender and excellently flavored sort, bright orange in color. Packet 5 cents; ounce 20 cents; ¼ pound 60 cents; 1 pound \$2.00.

The Old Home.stead when cooked doesn't shrink-up like other beans, and it takes surprisingly few to make a mess.



KING OF THE GARDEN

The Lima that should be planted by those who are satisfied only with the biggest pods and biggest beans.



CARROTS--Continued



DANVER'S HALF-LONG

Danver's Half Long. A very heavy cropper, and one of the very best table Carrots grown for main crop. Does well in all soils. Runs 1½ to 2 inches in diameter and 5 to 6 inches in length. Rich, dark-orange color, smooth fine grained. Every garden should contain this general favorite. Packet 5 cents; ounce 20 cents; ¼ pound 60 cents; 1 pound \$2.00.

Long Orange. A very heavy yielder. Needs deep, rich soil. A splendid keeper. Desirable for table in Winter, but one of the very best for stock feeding. Highly colored, perfectly shaped, smooth and very long. Tender and of good flavor. Packet 5 cents; ounce 20 cents; ¼ pound 60 cents; 1 pound \$2.00

GARDEN OR TABLE BEETS

Sow seed as early as the ground can be worked in the Spring and at least once a month thereafter until middle of July, when an extra large quantity should be sown for Winter. Sow in drills, thinly, rows a foot or more apart. Thin plants to 4 to 6 inches in rows. An ounce plants 50 feet.

Eat more beets and save the meat for the boys "over there." Storing root vegetables in the cellar, or in a pit out doors, is the only way we can have plenty of vegetables for the Winter table.

Crosby's Egyptian. Always a good beet, and continually being improved. The largest of the very early sorts. Uniform in shape, of a vermilion color, sweet and tender. This variety should be your first planting on account of its extreme earliness. Packet 5 cents; ounce 15 cents; ¼ pound 50 cents; 1 pound \$1.50.

Early Blood Turnip. An old variety and a general favorite. Uniform shape, smooth and flesh a deep blood-color, tender and sweet. An excellent canning variety, and should be sown late for the Winter, as it matures so quickly. Packet 5 cents; ounce 15 cents; ¼ pound 50 cents; 1 pound \$1.65.

Edmand's Blood Turnip. A handsome, smooth round beet of uniform shape and good size. Flesh red, tender of excellent flavor. Small tops. Fine to follow extra early sorts and for late supply. Packet 5 cents, ounce 17 cents; ¼ pound 55 cents, 1 pound \$1.65



SWISS CHARD BEET

(6) **Extra Early Eclipse.** Ready for table quickly. Sweet, tender and good quality. Does not grow very large. Packet 5 cents; ounce 17 cents; ¼ pound 55 cents; 1 pound \$1.65.

Early Bassano. A second early. Flesh white and rose-colored. Packet 5 cents; ounce 17 cents; ¼ pound 55 cents; 1 pound \$1.65.

Crimson Globe Turnip. Flesh a deep purplish-crimson, slightly zoned. Packet 5 cents; ounce 17 cents; ¼ pound 55 cents; 1 pound \$1.65.

Long Blood Red. An excellent late variety. Deep blood-red color. A good keeper. Packet 5 cents; ounce 17 cents; ¼ pound 55 cents; 1 pound \$1.65.

Swiss Chard Beet. Grown for the leaves instead of root, and eaten like Spinach or Asparagus. Grows continuously from June until frost. Packet 5 cents; ounce 17 cents; ¼ pound 55 cents; 1 pound \$1.65.

Beets and Mangel Wurzels For Stock feeding. Sow in May or June in rows 2 feet apart, and thin to 3 inches in rows, 6 pounds of seed to acre. A row in the home garden makes fine picking for the chickens in Winter.

Mammoth Long Red. A favorite with dairymen. Ounce 10 cents; ¼ pound 30 cents; 1 pound \$1.00.

Norblton Giant. Another leading long red. Ounce 10 cents; ¼ pound 30 cents; 1 pound \$1.00.

Golden Tankark. Productive, very rich in Saccharine matter. Sheep prefer it. Ounce 10 cents; ¼ pound 30 cents; 1 pound \$1.00.



Vilmorin's Improved Sugar Beet. Contains most sugar. Sugar Beet seeds very scarce this year. Ounce 12 cents; ¼ pound 35 cents; 1 pound \$1.30.

Beet seed is scarce and high, but our prices are low compared with other responsible seedsmen. It is particularly true this year that *abnormally low prices are impossible when good seed is furnished.*

There is this to be remembered about our seeds: they are all tested and we offer nothing that does not prove up to the required vitality.

CHICKORY, Large-Rooted. Sow in Spring like Carrots, in rows 12 to 15 inches apart. Thin plants to 2 to 3 inches. To blanch leaves for salad in Winter, dig roots in Fall, cut leaves off just above roots, and place horizontally in layers alternating with layers of sand or loam, in a dark cellar, the tops of leaves all pointing outward. The roots can be roasted and ground to mix with, or as a substitute for, coffee. An ounce plants 100 feet. Packet 5 cents; ounce 25 cents.

CHERVIL, Curled. Sow in Spring in drills a foot apart, like Parsley. Leaves are aromatic and used for seasoning. Packet 5 cents; ounce 17 cents.

CABBAGE. Most Desirable Varieties.

(7)

For late Cabbage Plants sow seed in drills in April and May, in open ground, and transplant in June or July, at least 20 to 24 inches apart, in rows 2 feet apart. Early Cabbage may be set a little closer. For early Cabbage seed should be sown under glass, in January and February, and pricked out in flats or frames, 2 inches apart each way. One ounce for 8000 to 4000 plants.



Early Jersey Wakefield. By all odds the best extra early pointed-head cabbage. Can always be depended upon. The heads are pyramidal in shape with a round peak. Of delicate flavor. Heads up so early it is a welcome treat after the solid headed cabbage we have eaten all Winter. Packet 5 cents; ounce 40 cents; ¼ pound \$1.40; 1 pound \$5.00.

Charleston, or Large Wakefield. Large, solid heads, a few days later than Early Jersey Wakefield. Good quality. Packet 5 cents; ounce 40 cents; ¼ lb. \$1.40.

Early Spring. One of the earliest of the flat-headed cabbages. Planted by those who prefer a flat rather than pointed head. Packet 5 cents; ounce 40 cents; ¼ pound \$1.40.

Early Summer. Large, solid, round, flattened head of excellent quality. Packet 5 cents; ounce 40 cents; ¼ lb. \$1.30.

Early Winingstadt. Same size heads as Wakefield, but more pointed and not so early. The hardest headed of all cabbages. Choice for cold slaw and kraut. Packet 5 cents; ounce 40 cents; ¼ pound \$1.30.

Dwarf Flat Dutch. Well known and popular for summer. Good size. Packet 5 cents; ounce 40 cents; ¼ pound \$1.30.

All Head. Early, very solid and large. Packet 5 cents; ounce 40 cents; ¼ pound \$1.30.

Late Surehead. A most reliable sure-heading variety. Heads very large, round, flattened at the top, extra hard, firm and fine in texture. An excellent keeper and shipper. Packet 5 cents; ounce 40 cents; ¼ pound \$1.30.



EARLY SNOWBALL

Late Flat Dutch. Flat, very large, even, solid heads of fine texture. Sure heading. One of the very best late cabbages. Packet 5 cents; ounce 40 cents; ¼ pound \$1.40.

Autumn King. Large, flattened heads; leaves a dark bluish-green. Packet 5 cents; ounce 40 cents; ¼ pound \$1.40.

Danish Ball Head. A medium to late variety, mostly used for Winter. Medium size round and very hard. A fine keeper. Seed scarce this season. Packet 5 cents; ounce 50 cents; ¼ pound \$1.75.

Drumhead Savoy. The best all-round Savoy Cabbage. Large, solid, round heads, beautifully blanched and of finest flavor. Packet 5 cents; ounce 40 cents; ¼ pound \$1.40.

Late Red Drumhead. The best Red Cabbage. Large size, slightly rounded, firm head. Packet 5 cents; ounce 40 cents.

"I have purchased seeds from you at intervals, and have always found them satisfactory."

Phillip Hassel, Wilkes-Barre Pa.



LATE FLAT DUTCH

CAULIFLOWER

Sow and plant like cabbage, but give plenty of water during heading season, and when heads have formed and are hard they should be blanched by drawing the leaves together over the top and tying loosely with raphia or strips of soft cloth.

Early Snowball. A favorite, extra early Cauliflower of dwarf, compact growth. Head solid and of good size. Packet 10 cents; ½ ounce \$1.10.

Veitch's Autumn Giant. A large, late variety. Head compact and white. One of the best of the late sorts. Packet 10 cents, ½ ounce \$1.10.

Dwarf Erfurt. Very early, producing a solid, pure white head of finest quality. Packet 10 cents; ½ ounce \$1.10.

COLLARDS, Georgia

Resembles cabbage somewhat and largely used in South as boiling greens during the Winter, and for Poultry and Stock. A mass of leaves on tall stems. As leaves are broken off for use, the stalk grows higher and new leaves come out. In South grows all Winter. The "Georgia" is a strong variety, with light green leaves in a cluster, and is the most generally grown. Packet 5 cents; ounce 15 cents; 1 pound \$1.50.

Celeric, or Turnip-Rooted Celery. Grow same as Celery, but does not need earthing up, although improved if it is. Packet 5 cents; ounce 15 cents.

CELERY

Sow in flats, or open ground early as soil can be worked, 14 in. deep, pat soil firmly, in rows 8 to 10 in. apart. When grown transplant to another bed 4 to 6 in. apart each way.



Golden Self-Blanching

In July in the North, six weeks later South, set plants out again, in shallow trenches in garden, in rows a foot apart, 8 in. apart in rows. Soil should be very rich with well rotted manure. Blanch by earthing up 3 or 4 times; hold stalks tightly that soil will not get into heart. Earth up to within 2 to 3 in. of tips of leaves. In field set at surface instead of in trench, rows 4 feet apart. 2 feet if to be taken up for blanching in cellar for Winter. An ounce for 5,000 to 10,000 plants.

Golden, Self-Blanching.

Medium size, stocky growth, heart a rich golden-yellow, with light yellowish-green outer leaves. Excellent quality. Stalks thick, broad, very solid, remarkably crisp, tender. Best early garden celery, ready for eating in September. Pkt. 5c; oz. 30c.

White Plume. Very early and most easily blanched. Grows rapidly and blanches easily during the Summer. By Fall central stalks and leaves are snowy white even without earthing, but should be earthed up. Unsurpassed for Fall and early Winter. Packet 5 cents; ounce 30 cents.

Pink Plume. The name indicates the difference. Packet 5 cents; ounce 30 cents.

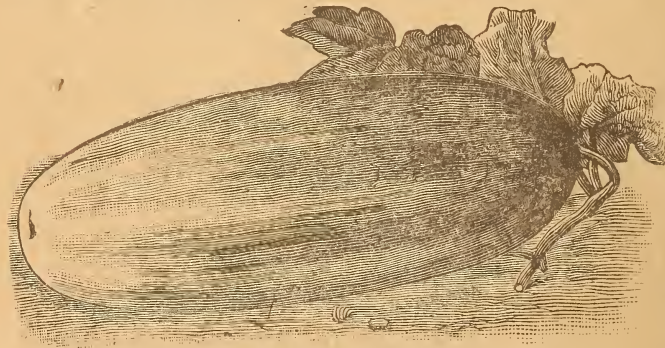
Giant White Solid. Second early variety. Most vigorous of all celery, a good Winter keeper. Stalks solid, broad, tender, brittle, of a delicious, sweet, nutty flavor. Blanches an Ivory white. Almost without fibre. Packet 5 cents; ounce 35 cents.

Boston Market. Dwarf and robust. White. Packet 5 cents; ounce 35 cents.

Rose Ribbed Paris. A very good late variety. Packet 5 cents; ounce 35 cents.

Golden Heart. A main crop variety for Fall and Winter. Large bunches of stalks, with solid heart, blanching a beautiful waxen-yellow. Crisp, brittle, of excellent flavor. Fine keeper. Packet 5 cents; ounce 30 cents.

Giant Pascal. The standard Winter Celery. Large bunches, of broad, heavily ribbed stalks. Blanches to a deep golden-yellow. A vigorous grower, very stocky. Stringless; excellently crisp; nutty flavor. Packet 5 cents; ounce 35 cents.



Improved Early White Spine

CUCUMBERS

When weather is settled and warm, plant in hills, 8 to 10 seeds to a hill, rich with well-rotted manure, 4 feet apart. When grown beyond insect danger thin to 4 plants to hill. For pickles, plant every 2 weeks to July 15th. For pickles, plant in June and July. Rich, moist soil is best. Pick as often as large enough—to leave on vine stops production. Spray with Bordeaux Arsenate of Lead, 3 ounces to a gallon of water, for squash bugs. Start in hot-bed or house April 1st, on back of a rod sod, or in little pots, to gain a month. An ounce plants 50 hills,

Improved Early White Spine. By far the best

(8) SWEET CORN

Corn is apt to rot if planted too early, when ground is cold and wet. But if there is an early warm spell it's often worth taking a chance to have a little extra early, as if the blades come up, they often escape a light frost. Plant 5 or 6 kernels to a hill, hills 3 feet apart each way, and thin to 3 stalks to a hill, or in rows 2½ to 3 feet wide, stalks 10 to 12 in. apart in rows according to varieties. Hoe soil well up around stalks and break off shoots. For succession plant every 2 weeks until July 15th. A pint plants about 90 hills, or 140 to 225 feet of row.

Golden Bantam. Extremely early, of vigorous growth and can be planted a little earlier than other varieties. Grows about 4 feet high, bears 2 or 3 ears to a stalk. Ears are not so very large but bear eight rows of broad, golden grains of most luscious, tender, sweet flavor. Pkt. 5cts.; ½ pint 25cts.; pt. 45cts; qt. 75cts.

Groff's Hybrid. A second-early variety, with thick ears about 7 in. long, and ten or more rows of large, sugary sweet grains to ear. Pkt. 5cts.; ½ pt. 25cts.; pt. 45cts.; qt. 75cts.

Country Gentleman. No table corn has ever taken the place of Country Gentleman as a mid-season and late variety for main crop. A good sized ear crowded with slender, deep "shoe-peg" grains. Always demands a higher price in market on its name alone, to say nothing of its delicious, sweet, distinctive flavor. Pkt. 5c; ½ pt. 25c; pt. 45c; qt. 75c.

Stowell's Evergreen. Still the popular and general main crop sugar corn for table, market and canning. Ears large, grains deep, exceptionally tender and sweet. Remains green and eatable longer than any other variety. Pkt. 5 cts.; ½ pt. 25 cts.; pt. 45 cts.; qt. 75 cts.



Stowell's Evergreen

POP CORN

Plant considerably closer than sweet corn as stalks are not so tall or large. Do not plant near sweet corn.

White Rice. Kernels long and pointed. A favorite variety, the kind most generally planted.

Golden Queen. Tall-growing variety; that produces largest ears in abundance. Pops larger than any other pop corn.

White Pearl. Smooth, large, white grains. All varieties 2 oz. pkt. 5 cts; ½ pt. 30 cts.

Remember, at the prices mentioned, we pay postage on all corn seed—other seedsmen generally do not pay postage.

cucumber for all purposes, slicing, baking, stuffing, pickling. Flesh tender, crisp, solid, 6 to 7 inches long, light green, with white spines. Pkt. 5 cts.; oz. 15 cts.; ¼ lb. 40 cts.

Famous Long Green. Deep, rich green; flesh solid, crisp, of fine grain and excellent quality 10 to 12 in. long. Young fruits one of best for pickles.

Early Cluster. A very early sort. Extremely productive, fruit in clusters, of good quality and flavor.

Jersey Pickling. An old favorite and reliable pickler.

West Indian Gherkin. A strong grower, very prolific. Small-fruit variety, exclusively for pickling, 2 to 3 in. long, thick and round. All varieties, Packet 5 cts.; oz. 15 cts.; ¼ lb. 40 cts.

LETTUCE



BIG BOSTON

In open ground, sow thinly, as soon as ground can be worked, and transplant 8 inches apart. Sow every 2 weeks. Requires rich, fine soil. An ounce makes 3000 plants.

Big Boston. Heads of very large size, often 10 to 12 in. across. Beautifully blanchéd and of superior quality. Heads well, especially in Spring and Fall. Generally grown South for shipping. The best for hot-beds. Pkt. 5 cts.; oz. 12 cts.; $\frac{1}{4}$ lb. 45 cts.; 1 lb. \$1.50.

Early Curled Simpson. Dwarf, compact, quick-growing sort, with golden leaves finely curled at edges. Pkt. 5 cts.; oz. 15 cts.; $\frac{1}{4}$ lb. 45 cts.; 1 lb. \$1.50.

Improved Hanson. Very large, solid, tender and of fine quality. Stands sun well. Pkt. 5 cts.; oz. 12 cts.; $\frac{1}{4}$ lb. 45 cts.; 1 lb. \$1.50.

Grand Rapids. Large, compact bunches of light leaves with fringed edges. Delicious quality and handsome in appearance. Very fine. Pkt. 5 cts.; oz. 12 cts.; $\frac{1}{4}$ lb. 45 cts.; 1 lb. \$1.35.

Iceberg. Large, solid, curled heads, with yellow heart; crisp and tender. Pkt. 5 cts.; oz. 15 cts.; $\frac{1}{4}$ lb. 45 cts.; 1 lb. \$1.40.

Mammoth Black-Seeded Butter. Extra large heads, compactly folded. Light leaves, blanchéd golden-yellow within. Largest of the butter-heads. Pkt. 5 cts.; oz. 15 cts.; $\frac{1}{4}$ lb. 45 cts.; 1 lb. \$1.45.

Perfected Salamander. Fine, compact heads; tender; best quality; resists Summer heat. Pkt. 5 cts.; oz. 12 cts.; $\frac{1}{4}$ lb. 45 cts.; 1 lb. \$1.40.

Golden Queen. Very early, small, yellow heads. Pkt. 5 cts.; oz. 15 cts.; $\frac{1}{4}$ lb. 45 cts.

New York. Vigorous plant; immense heads, leaves deep green closely folded and blanchéd very white. Pkt. 5 cts.; oz. 15 cts.; $\frac{1}{4}$ lb. 45 cts.

Dutch Speckled Butter. Small, compact heads, of fine quality. Pkt. 5 cts.; oz. 15 cts.; $\frac{1}{4}$ lb. 45 cts.

Paris White Cos, or Romaine. Long, upright heads of narrow, light colored leaves, very tender, crisp and refreshing. Withstands Summer heat well. Pkt. 5 cts.; oz. 15 cts.; $\frac{1}{4}$ lb. 45 cts.

MUSKMELONS-CANTELOUPS



EXTRA EARLY OSAGE, or Miller's Cream.

When all danger of frost is passed and ground is thoroughly warm, plant hills 4 to 6 feet apart, according to variety, 6 to 12 seeds to a hill. When danger from insects is gone, thin to 3. Pinch off ends of runners to promote early fruiting. Select light, rich, sandy soil. An ounce plants 50 hills.

Extra Early Osage, or Miller's Cream. A large, nearly round, dark-green skinned melon; thick, firm, orange flesh of fine quality, sweet, melting. A reliable melon. Pkt. 5 cts.; oz. 15 cts.; $\frac{1}{4}$ lb. 35 cts.

(9) **Paul Rose.** Very heavy yield of moderate size fruits. flesh salmon, deep, sweet and richly flavored. Pkt. 5 cts.; oz. 15 cts.; $\frac{1}{4}$ lb. 35 cts.

Emerald Gem. Exceedingly early, very prolific and long bearing. Fruit small, smooth; flesh thick, rich and of delicious flavor. Pkt. 5 cts.; oz. 15 cts.; $\frac{1}{4}$ lb. 35 cts.

Livingston's Tip Top. Bears heavy crop of delicious large melons, salmon-colored. Pkt. 5 cts.; oz. 15 cts.; $\frac{1}{4}$ lb. 35 cts.

Early Hackensack. A good size, heavily ribbed and netted melon, with thick, light-green flesh of fine flavor. Pkt. 5 cts.; oz. 15 cts.; $\frac{1}{4}$ lb. 35 cts.

Jenny Lind. Small, round, flat fruit, deeply ribbed. Flesh is yellowish-green, of unsurpassed flavor. Very prolific. Pkt. 5 cts.; oz. 15 cts.; $\frac{1}{4}$ lb. 35 cts.

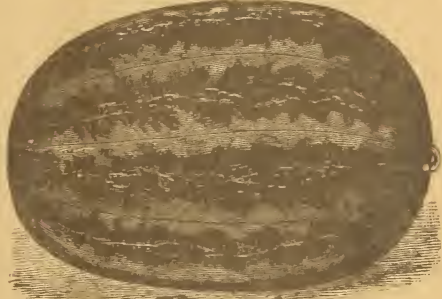
Montreal Market. A very large, green Nutmeg Melon, almost round and heavily netted. Thick, luscious flesh. A late variety. Pkt. 5 cts.; oz. 15 cts.; $\frac{1}{4}$ lb. 35 cts.

Rocky Ford. A green skinned melon turning grayish when ripening, and with a silver-colored netting. Flesh green and so sweet and luscious can be eaten to the rind. Very solid and firm. Pkt. 5 cts.; oz. 15 cts.; $\frac{1}{4}$ lb. 40 cts.

Long Island Beauty. Earliest; fine quality. Most beautiful in appearance. Pkt. 5 cts.; oz. 15 cts.

Acme. A very productive oblong shaped melon. Pkt. 5 cts.; oz. 15 cts.

WATERMELONS



Grow same as Muskmelons, but hills 8 to 10 feet apart.

Cole's Early. Earliest and easiest to grow, and one of the best and most delicious. About 9 in. around, a foot long; green rind; red, fine grained flesh. Ripen from heart to rind. Pkt. 5 cts.; oz. 10 cts.; $\frac{1}{4}$ lb. 30 cts.

Kleckley Sweets. Dark green, thin rind; flesh scarlet, solid, firm. Pkt. 5 cts.; oz. 10 cts.; $\frac{1}{4}$ lb. 30 cts.

Sweetheart—Oval. Very large; bright and mottled skin. Light red solid flesh of fine quality. Pkt. 5 cts.; oz. 10 cts.; $\frac{1}{4}$ lb. 30 cts.

Florida Favorite. One of earliest and best oblongs. Thin, hard, mottled rind; clear crimson, sweet flesh. Pkt. 5 cts.; oz. 10 cts.; $\frac{1}{4}$ lb. 30 cts.

Tom Watson. 16 to 22 in. long, 8 to 10 in. across. Deep-red, crisp, melting, fine-flavored flesh. Pkt. 5 cts.; oz. 10 cts.; $\frac{1}{4}$ lb. 30 cts.

Kolb Gem. Large, Mid-season. Bright red; good flavor. Pkt. 5 cts.; oz. 10 cts.; $\frac{1}{4}$ lb. 30 cts.

Mountain Sweet. Dark green, long, tapering to stem. Red flesh, solid, sweet. Pkt. 5 cts.; oz. 10 cts.; $\frac{1}{4}$ lb. 30 cts.

Phiney Early—Oblong. Fine, solid, red. Pkt. 5 cts.; oz. 10 cts.; $\frac{1}{4}$ lb. 30 cts.

Ice Cream. Round; very early; scarlet, solid flesh. Pkt. 5 cts.; oz. 10 cts.; $\frac{1}{4}$ lb. 30 cts.

Early Fordhook. Extra early. Good size; red flesh. Pkt. 5 cts.; oz. 10 cts.; $\frac{1}{4}$ lb. 30 cts.

Preserving Citron. Plant like Melons. Very delicious preserved, or for sweet pickles. Pkt. 5 cts.; oz. 10 cts.

PARSLEY—Champion Moss Curled. By far the best parsley grown. A densely curled mass of deep green leaves. Sow in April $\frac{1}{2}$ in. deep, in rows a foot apart; thin to 6 in. Takes 3 to 4 weeks to germinate, so soak for 3 or 4 hours before planting. Pkt. 5 cts.; oz. 12 cts.

PARSNIP. Sow as early in Spring as ground can be worked, $1\frac{1}{2}$ in. deep in rich soil, in drills 15 to 18 in. apart. Thin to 6 in. Ounce to 200 feet. Dig some for Winter, leave balance in ground over Winter for Spring. Seed very scarce and high.

GUERNEY. A half-long. The best. Pkt. 5 cts.; oz. 25 cts.; $\frac{1}{4}$ lb. 60 cts.

VEGETABLE OYSTER or Salsify.—Mammoth Sandwich Island. Very mild, and deliciously flavored. Grows almost as large as Parsnips. The best. Pkt. 5 cts.; oz. 20 cts.; $\frac{1}{4}$ lb. 60 cts.; 1 lb. \$2.20.

Cultivate same as Parsnips. Can remain in ground all Winter but dig in Spring before starts growing. Sow in Spring 1 in. deep in drills 12 to 15 in. apart; thin to 6 in. An oz. to 60 feet.

ONIONS



YELLOW GLOBE DANVERS

Sow early in Spring, thinly, $\frac{1}{4}$ in. deep, in drills 14 in. apart, thin to 2 in. Pull when tops begin to die down, and store in cool, dry place. Sow in house, or under glass in Jan., Feb. or March, and transplant in April in open ground 3 to 4 in. apart, for very large, early bulbs. Soil must be well drained very rich well worked. An ounce plants 175 feet.

Yellow Globe Danvers. The onion that surpasses all others in so many points that it stands first in the judgment of experienced growers. An early, heavy cropper. Almost round, very solid, fine flavor and a most excellent keeper. Don't fail to plant the Yellow Globe Danvers. Pkt. 5 cts.; oz. 40 cts.; $\frac{1}{4}$ lb. \$1.45; 1 lb. \$5.00.

Red Wethersfield. Another old favorite, especially in States where red onions are preferred. A larger, flatter onion, with good "onion" flavor, skin purplish-red. Pkt. 5 cts.; oz. 35 cts.; $\frac{1}{4}$ lb. \$1.40; 1 lb. \$5.00.

Prizetaker. The largest and handsomest American Onion. An all-purpose onion; true globe shape; sound, solid, pale-yellow skin. Flesh pure white, mild flavor. A good keeper. Pkt. 5 cts.; oz. 45 cts.; $\frac{1}{4}$ lb. \$1.65; 1 lb. \$6.

White Portugal, or Silver Skin. One of the leading white sorts. Beautiful shape and mild, sweet flavor. Popular for sets and one of very best for pickling. Pkt. 5 cts.; oz. 45 cts.; $\frac{1}{4}$ lb. \$1.60.

Southport Yellow Globe. Very productive. A good keeper. An oblong shaped onion, pale straw-yellow; mild flavor. Pkt. 5 cts.; oz. 50 cts.; $\frac{1}{4}$ lb. \$1.65; 1 lb. \$5.50.

Early Flat Red. Early, large, flat, medium-size. Desirable for home gardens. Pkt. 5c; oz. 35c; $\frac{1}{4}$ lb. \$1.25.

Australian Brown. Extra early, a sure cropper and extra good keeper. Shaped like Yellow Danvers but thicker; skin generally reddish-brown. Flesh white and of sweet, mild flavor. A thoroughly good onion. Pkt. 5 cts.; oz. 35 cts.; $\frac{1}{4}$ lb. \$1.30; 1 lb. \$5.50.

Early White Pearl, or White Queen. Best onion for small pickles, and the earliest of all to ripen. Pure paper-white, small and mild. Seed very scarce. Pkt. 5 cts.; oz. 50 cts.; $\frac{1}{4}$ lb. \$1.65.

White Barletta. Also called White Queen. A small, white, Italian onion, chiefly valuable for pickling. Pkt. 5 cts.; oz. 50 cts.; $\frac{1}{4}$ lb. \$1.65.

PEPPERS

Sow in March, under glass, in flats; prick out in other flats when 2 to 3 in. high, 2 in. apart each way. Transplant in open ground when danger of frost is passed, in rows 2 to 3 ft. apart, 12 to 18 in. apart in rows. Ounce for 1000 to 1500 plants.



Chinese Giant

Chinese Giant. The largest mild Red Pepper. Grows vigorously and bears heavily. Enormous fruits, thick, blocky-shaped, brilliant glossy-scarlet. Flesh thick, tender, sweet, ideal for baking, stewing and salads. Pkt. 5 cts.; oz. 60 cts.

Ruby King. 3 to 4 inches around; 5 to 6 inches long. Ruby-red; flesh thick, sweet and mild. Pkt. 5 cts.; oz. 55 cts.

Bull-Nose, or Improved Large Bell. Early; bright red. A favorite sweet pepper for stuffing. Pkt. 5 cts.; oz. 55 cts.

Golden Dawn. Similar to Bull-Nose, but rich-yellow color. Pkt. 5 cts.; oz. 55 cts.

Red Cherry. Round and very hot—for pickles. Pkt. 5 cts.; oz. 55 cts.

Long Red Cayenne. Bright-scarlet, cone shaped, hot. Used for pickling both when green and ripe. Pkt. 5c; oz. 55c.

(10)

PUMPKINS

Sow in May when soil has become warm. Hills 8 to 10 feet apart, 4 seeds to a hill. Or in a cornfield. Don't plant near other vines. An ounce to 75 hills.

Large Cheese. Large, flat-round, creamy-yellow. Thick, orange flesh of fine quality. Most popular kind for pies. Good keeper. Pkt. 5 cts.; oz. 10 cts.; 1 lb. \$1.00.

Connecticut Field. A large, orange-colored field pumpkin, generally grown for stock, but frequently used for pies. Pkt. 5 cts.; oz. 10 cts.; 1 lb. 70 cts.

Tennessee Sweet Potato. Pear-shaped; thick, white flesh. Pkt. 5 cts.; oz. 10 cts.; 1 lb. 75 cts.

Large Yellow Mammoth Potiron. The largest of all pumpkins, sometimes reaching 100 pounds. Pkt. 5 cts.; oz. 10 cts.

GARDEN PEAS

Sow thinly in furrows 3 inches deep, as early as ground can be worked, and every ten days for succession until August 15th. Rows 3 feet apart. The tall varieties may be planted in double rows and brush stuck in between. Peas must have rich soil. The smooth round peas may be planted a little earlier than the wrinkled, but the wrinkled are sweeter. One pound plants 90 ft.

Senator. One of the very finest, 2nd early sorts. Vines $2\frac{1}{2}$ ft., bearing a heavy crop of big, round pods, filled with delicious, wrinkled, sugar peas, 7 to 10 peas to a pod. A splendid pea. Pkt. 5c, pt. 40c, qt. 70c.

Not an Excelsior. Dwarf; Extra Early. A vigorous grower. Not higher than 15 in. Bears abundance of good sized pods, well filled with sweet peas. Pkt. 5 cts.; pt. 40 cts.; qt. 70 cts.

McLean's Little Gem. Dwarf. An extra early, green, wrinkled pea. Very prolific and fine flavor. Pkt. 5c; pt. 40c; qt. 70c.

Alaska. A very early, smooth, blue pea; pods 3 in. long, well-filled with good flavored peas. Fine for market and canning. Pkt. 5c; pt. 40c; qt. 70c.

Grand or Prosperity. Extremely early. Grows vigorously $2\frac{1}{2}$ to 3 ft. tall. Bears heavily, large pods filled with delicious sweet peas. Pkt. 5c; pt. 45c; qt. 80c.

Bliss Everbearing. A tall, 2nd early sort; prolific, continuous bearing; pods 3 to 4 in. long, 6 to 8 very small wrinkled peas to a pod. Reliable for Summer. Pkt. 5c, pt. 40c, qt. 70c.

Abundance. Grows 3 ft., branching from bottom and bearing abundantly, pods 3 to $3\frac{1}{2}$ in. long, well filled with 6 to 8 big, wrinkled, sugar peas. Pkt. 5c, pt. 45c, qt. 80c.

Telephone. Late, general crop $3\frac{1}{2}$ ft. Strong vine, bearing 18 to 20 large pods a stalk, containing 6 to 7 large peas of most delicious, sugar-flavor. Continues to bear a long time. Pkt. 5c, pt. 40c, qt. 70c.

Marrowfat. Strong growers and great bearers. Vines 4 to 5 feet tall, filled with peas. More particularly used for soup. Pkt. 5c, pt. 35c, qt. 60c.

Melting Sugar, Tall and Dwarf. Edible Pods. Pods gathered when peas begin to or are half developed; broken and cooked like string-beans. The dwarf is about $1\frac{1}{2}$ ft. high; the tall a yard. Pkt. 5c, pt. 45c, qt. 75c.

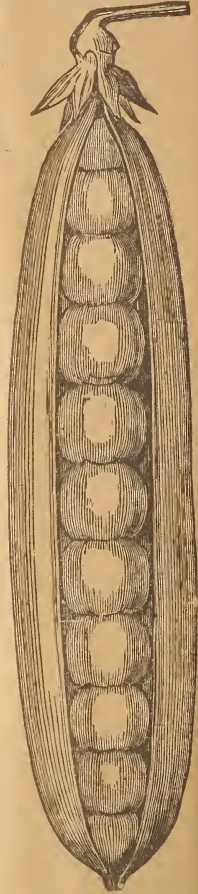
Don't forget we pay postage on peas. They are scarce and increasing in price.

SPINACH

For Spring and Summer use, sow in drills 1 in. deep, 12 in. apart, early as can work soil; every 2 weeks for succession. For Winter and early Spring sow in Sept. and cover with straw before severe cold weather. Needs rich soil. One ounce to 100 ft. Seed very scarce and high.

Long Standing. Compact, thick, fleshy, dark green leaves. Remains edible long time. Pkt. 5c, oz. 17c, $\frac{1}{4}$ lb. 55c, 1 lb. \$2.25.

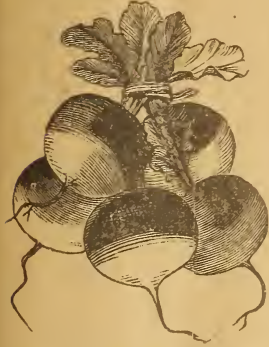
Prickly Seeded. Medium size leaves. Very hardy. **Victoria.** Later than "Long Standing. Good. **Savoy Leaved.** Very curly leaves. Each of these three, Pkt. 5c, oz. 17c.



SENATOR

RADISHES OF ALL SORTS

Sow early and often. In good, warm, rich loam can pick in 28 to 40 days. Sow thinly in rows 10 to 12 in. apart. Sow Winter Radishes in July and August; dig before severe frost and store in sand in cellar or pit. An ounce plants 90 feet.



Extra Early Scarlet White Tipped radish, deliciously crisp, mild and tender.

Early Long Scarlet. Long, slender, handsomely colored roots. Crisp, brittle and fine grained. Ready in 25 days. None better.

Extra Early Scarlet White Tipped. Small, round roots, bright scarlet tops with clear white circle on tips. Delicious and attractive.

Early White Turnip. Both skin and flesh are pure white throughout. Grows quickly. Very mild.

Becker's Chertier. Long crimson, shaded white at tips. A large radish; flesh pure white, mild, brittle and fine grained.

Golden Globe, or Golden Yellow. Globe shape; skin rich golden-yellow; flesh crisp, mild and tender. Grows rapidly, even in hottest South.

White Strasbourg. Oblong roots; pure white; mild, crisp. Fine to grow in Summer.

White Icicle. Long, transparent white, very crisp and brittle. Remains edible a long time.

Long Cardinal. Bright scarlet; long; quick grower; tender.

Chinese Rose, or Scarlet Chinese Winter. Cylindrical roots, largest at bottom tapering abruptly to small top. Skin smooth and of a bright rose color. Flesh firm, crisp, tender and fine flavor.

An excellent Winter Radish and a good keeper.

White Chinese. Very large, pure white; mild flavored winter sort.

Long Black Spanish. One of the leading long Winter Radishes. Flesh white, crisp, solid, snappy.

Round Black Spanish. Similar to above but shorter; mild flavored.

SQUASH

Does best in warm, very rich soil. Plant in well manured hills like melons, bush varieties 3 to 4 feet apart each way. Winter sorts 8 to 10 feet; 8 to 12 seeds to hill. When danger of insect loss is passed thin to 2 to 4 to a hill. Ounce to 25 hills.

Early Delicata. The best all-round squash. Not large, oblong, very productive, orange-yellow skin, striped with green; rich, solid flesh of finest flavor. Delicious for Summer and none better for Winter. A splendid keeper. Develops so rapidly can be planted late enough to avoid squash bug. Pkt. 5c, oz. 12c, ¼lb. 35c, 1 lb. \$1.30.

Extra Early White Bush. The old favorite "Patty Pan" or "Crimling." Creamy white skin; fine quality; very prolific. Pkt. 5c, oz. 12c, ¼lb. 35c, 1 lb. \$1.30.

Fordhook. A running variety for Summer and Winter. Oblong, 8 to 10 in. long.

Boston Marrow. Winter squash. Large, oval, hard shell. Bright orange skin, deep-orange flesh. Very productive. Pkt. 5c, oz. 12c, ¼lb. 35c, 1 lb. \$1.30.



Early Delicata

Pkt. 5c, oz. 12c, ¼lb. 35c, 1 lb. \$1.30.

Boston Marrow. Winter squash. Large, oval, hard shell. Bright orange skin, deep-orange flesh. Very productive. Pkt. 5c, oz. 12c, ¼lb. 35c, 1 lb. \$1.30.

(11) **Hubbard.** The old favorite Winter variety. Strong, dry flesh. A good keeper. Pkt. 5c, oz. 12c, ¼lb. 40c, 1 lb. \$1.50.

Mammoth Chili. Very large and heavy; smooth, rich-orange skin, with broad, open netting. Flesh thick, yellow, fine grained and sweet. Pkt. 5c, oz. 12c, ¼lb. 40c.

TOMATO

For very earliest start seed under glass in house in February; when 3 inches high transplant to flats, thumb-pots or plant boxes. Later transplant again. Never crowd tomatoes for best results. When weather is settled, warm, set out in open ground 3 to 4 feet apart each way. For main crop start a few weeks later and transplant into open ground. Can be planted closer if staked up. An ounce produces 2000 to 3000 plants.



MATCHLESS

Matchless. The best large fruited, smooth, main crop tomato. A strong grower, heavy producer of large, handsome fruits right through season. Solid, firm, fine flavor, and a good keeper. A beautiful tomato, and very satisfactory in every way. Pkt. 5c, oz. 35c, ¼lb. \$1.10.

Erlana. Extremely early, producing clusters of fair sized fruit, uniform in size and shape. Deep red, very solid and fine flavor. Pkt. 5c, oz. 40c, ¼lb. \$1.40.

Atlantic Prize. Extra early, smooth, medium scarlet, good size. Pkt. 5c, oz. 40c, ¼lb. \$1.40.

Improved Beauty. Large size, smooth and solid. Rich glossy-crimson, with a slight purple tinge. Very productive, begins to ripen about Mid-season. Pkt. 5c, oz. 40c, ¼lb. \$1.40.

Ponderosa. The largest tomato fruit. Purplish-pink. Very solid, with few seeds. Ripens Mid-season and until frost. Pkt. 5c, oz. 45c, ¼lb. \$1.50.

New Stone. A large, regularly shaped, smooth, scarlet tomato. A good main cropper; strong growing vine; very prolific. Skin is tough; flesh solid, so is a good shipper. Pkt. 5c, oz. 35c, ¼lb. \$1.10.

Golden Queen. A handsome, large, yellow, smooth; very solid, excellent flavored tomato. Pkt. 5c, oz. 40c.

Yellow Plum Pear-shaped Yellow. Both good yellow preserving varieties. Pkt. 5c

TURNIPS

For early, sow seeds of flat sorts as soon as ground opens, in drills 1 foot apart, thinly, and thin to 3 to 4 inches. Sow every 2 weeks to June. For Fall and Winter sow in July and August. Ruta Bagas, sow in June and early July. An ounce for 175 feet.

Purple-Top White Globe. Early. One of the very best turnips grown. Globular shape. Heavy productive. Skin white, with part above ground purple; flesh white, solid, fine flavor. Pkt. 5c, oz. 15c, ¼lb. 55c, 1 lb. \$2.

Extra Early White Milan. A somewhat flattened turnip, white skin and snowy white flesh. One of the standard sorts. Pkt. 5c, oz. 20c, ¼lb. 70c, 1 lb. \$2.00.

Early White Flat Dutch. Strap Leaf. White, fleshed, quick grower of mild flavor. Pkt. 5c, oz. 17c ¼lb. 60c, 1 lb. \$2.00.

Early White Egg. Egg-shaped, medium size; develops very quickly. Smooth, thin skin; white flesh, fine grained and sweet. Pkt. 5c, oz. 20c, ¼lb. 70c, 1 lb. \$2.75.

Yellow Aberdeen. A splendid variety. Good size, globular, smooth, with rich yellow skin and flesh of excellent quality. Pkt. 5c, oz. 15c, ¼lb. 50c, 1 lb. \$1.80.

Long Island Improved Purple-Top Ruta Baga. A very hardy, very productive, perfectly shaped Ruta Baga. Large, smooth, neckless, solid. Flesh rich yellow, fine grained and delicious flavor. None better for table and stock. Pkt. 5c, oz. 20c, ¼lb. 60c, 1 lb. \$2.20.

Remember we pay postage on all quantities



Yellow Aberdeen

Early White Egg. Egg-shaped, medium size; develops very quickly. Smooth, thin skin; white flesh, fine grained and sweet. Pkt. 5c, oz. 20c, ¼lb. 70c, 1 lb. \$2.75.

Yellow Aberdeen. A splendid variety. Good size, globular, smooth, with rich yellow skin and flesh of excellent quality. Pkt. 5c, oz. 15c, ¼lb. 50c, 1 lb. \$1.80.

Long Island Improved Purple-Top Ruta Baga. A very hardy, very productive, perfectly shaped Ruta Baga. Large, smooth, neckless, solid. Flesh rich yellow, fine grained and delicious flavor. None better for table and stock. Pkt. 5c, oz. 20c, ¼lb. 60c, 1 lb. \$2.20.

Remember we pay postage on all quantities

MISCELLANEOUS

ENDIVE—*Moss Curled, White Curled, Green Curled, and Broad Leaved Batavia.* All good. An ounce plants 200 feet. Pkt. 5c, oz. 15c, ¼lb. 55c.

CORN SALAD or **FELLCUS.** Use in Fall as substitute for lettuce. Pkt. 5c, oz. 15c.

CRESS—*Water, Curled or Pepper Grass.* Pkt. 5c, oz. 40c.

EGG PLANT—*New York Purple.* The standard sort. Large, 6 to 8 fruits to a plant. Pkt. 5c, oz. 50c.

KALE. See page 3.

KOHL RABI—*Early Purple Vienna, Early White Vienna.* The two best. Pkt. 5c, oz. 25c.

LEEK, American Flag. The very best variety. Pkt. 5c, oz. 25c.

MUSHROOM SPAWN—*Pure Culture.* Fresh. Per brick, postpaid 25c; 8 bricks \$1.60 by express receiver to pay express charges.

(12) **MUSTARD**—*White London, Chinese Curled, Southern Giant Curled.* For salads and garnishing. Pkt. 5c, oz. 10c, ¼lb. 30c.

OKRA or **GUMBO**—*Dwarf Prolific, Long Green.* The two best. For Soups, stews, etc. Pkt. 5c, oz. 10c, ¼lb. 25c.

RHUBARB—*Victoria.* Very large. The finest cooking variety. Pkt. 5c, oz. 15c, ¼lb. 50c.

BROOM CORN—*Evergreen.* Our own grown. Fine. Pkt. 5c, lb. 20c, 25 lbs. for \$2.50, receiver to pay express charges.

SUNFLOWER—*Mammoth Russian.* Largest and best, lb. postpaid 25c, 25 lbs. or more by express, purchaser to pay express charges, 10c per pound.

LaPARK LAWN GRASS. Special Mixture. Makes lawn first season; permanent. Oz. 5c, lb. 40c postpaid. By express, purchaser to pay express charges, 1 peck, 5 lbs. \$1.50. One pound seeds 500 square feet.

AT THE REQUEST OF THE FOOD COMMISSIONER

and to help end the Great War which has devastated so many countries of Europe, and is even already bringing grief and death home to our own dear America, it is the duty of every one of us who has a plot of ground, or can share his neighbor's lot, to plant a garden.

Our allies haven't enough to eat, many of them barely enough to keep body and soul together. Belgians, Armenians, Syrians—men, women and children—are starving to death by the thousands.

The battling forces of France, England and Italy will soon feel the pinch.

The starving millions back of the lines, upon whose health and vigor depend the constant stream of guns and munitions, repairing of ships, and building up of new fleets, are already worried for food.

Even our men, our very own fathers, sons and brothers, will be deprived of the rations they must have to give them a fair chance in the awful days just ahead of them.

Unless every one of us here at home makes the fight to increase tremendously the production of food.

Every carrot, every beet, every onion grown by someone who never before grew a vegetable, on ground never before used as a garden, means one more day's life for some poor human being, for when it comes right down to the last, it requires so very little to merely sustain life, and surely we can for a while become vegetarians to permit the shipping of meats and cereals across the water.

Keep this in mind as you dig, and sow, and weed, that you are just as truly doing a part in the struggle that is essential and must be done, as the brother who risks his life in the first line trenches.

Food will win the War is never absent from the dispatches from the front. To plant and take proper care of a garden is something the old and young can do, that can be done, between shifts, by the men whose work is at home. If any of us need more incentive to put our minds and hearts into the work, than the privilege of doing our duty, remember how palatable fresh vegetables are.

To be of the greatest assistance to "new" gardeners, we have made up two collections of seeds that will provide a succession of vegetables all through the season. We purposely have not named the varieties in order that we may select the sorts generally better suited for the State in which you live, but all the seeds in both collections are from our regular catalogued stock. We believe these collections will also prove a convenience to many of our regular customers who prefer to take our judgment in the selection of seeds for their gardens.

The fact that the collections are already arranged does not mean that customer's may not express a preference for some change, but it does mean that the selection finally depends upon us, and that, for obvious reasons, the collection must be acceptable as we send it.

"OUR BOYS" Collection

- 1 pint Beans—A Dwarf, stringless sort.
- 1 pkt. Beans—Pole variety.
- 1 pkt. Beans—Limas.
- 2 pkts. Beets—Best for your garden.
- 1 pkt. Carrots—For the table.
- 1 oz. Sugar Corn.
- 1 pkt. Cucumber.—A splendid variety.
- 2 pkts. Lettuce.—Delicious, crisp, tender.
- 1 pkt. Onions.
- 1 pkt. Parsley.
- 1 pint Peas—Sugar Peas.
- 1 oz. Radish.
- 1 oz. Turnips.
- 4 pkts. Flowers, all different sorts.

Our Special Price for "OUR BOYS" Seed Collection, **\$1.30**

The "VICTORY GARDEN"

- 2 pt. Beans—One or two best dwarf, stringless.
- 1 pkt. Beans—Pole or climbing.
- 1 pkt. Beans—Limas.
- 1 oz. Beets—For Summer and Winter.
- 1 pkt. Cabbage—Best for your locality.
- 3 pkts. Carrots—Delicious table carrots.
- ½ pt. Sugar Corn.
- 1 p. Cucumber—Slicing, baking, pickling.
- 1 oz. Lettuce—Head variety.
- 1 pkt. Muskmelon or Canteloup.
- 2 pkts. Onions—General purpose onion for table.
- 1 pkt. Parsley.
- 2 pts. Peas—Sweet, green.
- 1 oz. Radish.
- 1 pkt. Tomato.
- 2 pkts. Turnips.
- 11 pkts. Flower Seed, all different.

Our Price for the "VICTORY GARDEN" Seed Collection, **\$2.60**

Receiver Must Pay Postage on These Two Special Collections.

By letting you pay the postage we can do a little better for you than if we have to average the postage ourselves. "Our Boys" collection weighs 3 lbs.; "Victory Garden" weighs 5 lbs. Give these weights to your postmaster and he will tell you exactly how much the postage will be. Then, remember, please, you must send us \$1.30 plus the postage for "Our Boys" collection; and \$2.60 plus postage for the "Victory Garden." Please do not send postage stamps unless you cannot get a money order or register your letter, because we have so many more stamps than we can use.

Yours to help end the war,

LaPARK SEED and PLANT CO., LaPark, Pa.

Choice Flower Seeds, 1918

GENERAL LIST OF THE BEST KINDS.

OWING to the war it is impossible to obtain as great a variety of flower seeds as formerly, and this list had to be curtailed. Some of these seeds have been carried over, but all have been tested, and can be relied upon. This is more than can be said by many rival seedsmen. When you buy LaPark seeds you can depend upon their vitality and quality. Terms:

1 Packet (unless priced 10 cts.)	5 cts.	23 Packets (unless priced 10 cts.)	\$1.00
5 " " " " "	25 cts.	48 " " " " "	2.00
11 " " " " "	50 cts.	75 " " " " "	3.00

Park's Floral Magazine, a charming floral monthly, included in every order for five or more packets; or, if not wanted, two extra packets our choice instead.

We would like to have an agent in every community to solicit seed orders, and also subscriptions for Park's Floral Magazine. Send for terms. Order early.

Address **LAPARK SEED AND PLANT CO.**

(Successors to Geo. W. Park.)

LaPark, Lanc. Co., Pa.

Blooming First Season.



ALYSSUM.



AGERATUM.



ANTIRRHINUM.

Alyssum, Sweet.—This is invaluable as an edging, as it blooms freely from spring till late autumn. The flowers are in fine clusters, white, fragrant and good for cutting. It is one of the annuals that every flower-cultivator should grow. We offer the following: Common Sweet, spreading, fine for beds or borders; White Carpet Improved, low, dense, spreading; Little Gem, six inches high, dwarf, bushy, free-blooming; Lilac, new. All mixed.

Ageratum, Large-Flowered.—This is a fine everblooming flower, showy in beds, useful for edgings, and good for winter-blooming in pots. It thrives in any soil, and requires full exposure to the sun. Imperial Dwarf grows a foot high, and comes in deep blue and white. It is the best for beds. Swanley Blue is similar, but light blue. Little Dorritt is light yellow. Princess Victoria Louise is blue with white center. Mauve Beauty, fine mauve, new. These fine new sorts separate or mixed. Also Tall sorts mixed.

Antirrhinum, New Orchid-flowering.—These are elegant half-dwarf Snapdragons with long spikes of large flowers of the newest and finest colors. They never fail to please those who grow them. We can supply White, Golden Yellow, Golden Chamois, Rosy Pink, Fiery Scarlet, Crimson, Striped, Copper, and Pink and Terra-cotta shades. They are fine for beds and good for pots in the window. We supply the colors separately or in splendid mixture. We can supply also the Tall Snapdragons in colors or mixed; also the Tom Thumb varieties in mixture. We also supply Double Snapdragons in mixture, and a Complete Mixture of all varieties.

- Abronia**, Sand Verbena; rose, likes sun. (14)
- Agrostemma cœli-rosa**, 1 ft., mixed.
- Alonsoa**, Scarlet, Chamois, Myrtle-leaved, Warszewiczii scarlet, and Compacta for pots. Also mixed.
- Amaranthus**, annual foliage and flowering plants thriving in a rather dry soil and sunny situation. We have *Atripurpureus*, *Abyssinia*, *Amabilis tricolor*, *Bicolor ruber*, *Brilliant*, *Caudatus*, *Cruentus*, *Hypochondryacus*, *Monstrosus*, *Oriflame*, *Melancholicus ruber*, *Tricolor*, etc., separate or mixed.
- Amberboa Muricata rosea**, a fine annual. Flowers rose showy, valuable for cutting.
- Anagallis**, Pimpernel, 1 ft., fine for pots or beds, Red, Blue, Lilac, mixed.
- Anchusa**, Dropmore, a biennial 3 ft. high; flowers rich blue, in clusters.
- Anthemis Kelwayi**, hardy perennial, 2 feet; becomes a dense clump, bearing a mass of golden "daisies" throughout autumn.
- Arctotis**, 1 foot; annual; large, bright flowers; Lavender, Orange, mixed.
- Argemone**, Mexican Poppy; 2 ft., pretty foliage, large, showy flowers; likes sand and sun. White, Yellow, Mixed. Makes a pretty summer hedge.
- Arnebia Cornuta**, gold, spotted brown.
- Artemisia Annua**, Sweet Fern; 5 feet; fragrant foliage, pretty. *Gracilis*, silvery foliage.
- Asperula Azurea**, 1 foot, bushy annual; fragrant blue clusters.

ASTERS, DOUBLE, FINEST SORTS.



PÆONY PERFECTION.



IMPROVED BRANCHING.



OSTRICH FEATHER.

Aster, Pæony Perfection,—Handsome race, the flowers large, with incurved petals, and showing a great variety of beautiful colors. Excellent for beds. Grows about two feet high.

Aster, Improved Branching,—These are really the most beautiful, desirable and popular of Asters. The plants are of branching habit, the large double flowers borne on long, strong stems, remain in beauty for a long time, and are splendid either for showy autumn beds or for cutting. These are the beautiful Asters mostly so attractive in the markets during the autumn months. We can supply them in these colors: White, Rose, Light Blue, Lavender, Indigo Shell Pink, Enchantress Pink, Gray Violet. Also all colors in splendid mixture.

Aster, Ostrich Feather,—These bear fluffy double flowers that are much admired. They grow two feet tall, are free blooming, and fine in beds or for cutting. Goliath, large white, and all colors mixed.

Aster, Autumn Queen Fiery Scarlet, a very bright, beautiful double Aster a foot high; flowers double, of medium size, freely produced and showy in beds.

Aster, Queen of the Market, similar to Autumn Queen: a foot high; fine for beds and pots. White, Blush, Deep Blue, Bright Blue, Mixed.

Aster, Other Sorts: Crown Pompon, Mixed; Chrysanthemum, Mixed; Victoria, Mixed.

Bellis Perennis, Double Daisy, a beau-

tiful hardy edging plant, easily grown from seeds, blooming freely the first season. The plants become pretty little tufts that are covered from early spring until early winter (except for a few weeks in summer) with charming double flowers from white to deep rose. They may be classed almost with the Pansy in value. We have *Monstrosa Double White*; *Monstrosa Double Red*; *Snowball*, white; *Double Quilled Red*; *Ranunculus-flowered*. Separate or mixed.



Bidens, *Dahlioides*, half-hardy perennial.

Bartonia aurea, an annual a foot high, branching and bearing lovely golden flowers.

Basil, Sweet, Large Green, deliciously fragrant foliage: a fine herb.

Beet, Ornamental, showy foliage plants for beds or borders; of easy culture. We have *Victoria*, red foliage; *Silver-leaved*, curled; *Brazillian*, handsomely variegated; *Chilian Crimson* and *Chilian Yellow*; separate or all in fine mixture.

Browallia, lovely branching plants a foot high, the flowers of exquisite form and texture, and continually produced. Fine for garden or house; Bloom well in winter. *Elatea Violacea*, violet; *Elatea Alba*, white; *Elatea Compacta*, best for pots, blue. Separate or mixed.

Brachycome, *Swan River Daisy*, little annuals of great beauty; elegant in a bed or border. *Little Blue Star*; *Iberidifolia*, blue, white; *White Star*. Mixed.

BALSAM, SPLENDID DOUBLE KINDS.



The Double Balsam is among our finest annuals. The seeds start readily, and the plants soon begin to bloom, and are showy throughout the season. The plants are easily transplanted, and should be set ten inches apart. They thrive in sun or shade, and are excellent winter-blooming window plants when started in summer and grown in pots. We especially recommend the Camellia-flowered Balsams, the flowers of which are as double as roses, and of the richest and most varied shades.

Improved Camellia-flowered. Plain: Pure White, Pure Scarlet, Rich Crimson, White reflecting rose, White shaded lilac, Light Yellow, Lilac, Violet, Bright Salmon Rose, Chamise, Fiery Red. Spotted: Scarlet spotted, Rose spotted, Violet spotted. These choice sorts separate or in fine Special Mixture.

Double Rose-flowered. large, double, many colors, mixed.

Double Dwarf, 6 inches high; double, mixed.

Double Spotted, semi-double, many colors mixed.

Carnation-striped.

Royal King, Queen, mxd.

Solferino, handsome spotted and striped.

Goliath, tall, double, rose.

Prince Bismarck, tall, branching, large, salmon, fine.

Primrose, superb bearing full-double yellow flowers.

Complete Special Mixture of all the above fine Balsams.



Cacalia, Flora's Paint Brush, 1 foot; flowers small, brush-like, in clusters; Scarlet, Yellow, Mixed.

Calandrinia, dwarf, succulent plants that thrive in hot sun and bloom freely during summer. Rose, White, Purple, also mixed.

Callirhoe, Malvaceous plants with bright cup-like flowers through autumn, until after frost, Mixed.

Cannabis, Giant of Piedmont, handsome, tall, branching plant, useful for the back-ground; six feet high; known as Giant Hemp.

Calendula Grandiflora, good hardy annual a foot high, branching and blooming continuously from early summer until after severe frosts, rivaling the late Chrysanthemums. Flowers double, large and handsome, most shades of yellow. Fine for cutting; popular for greenhouse culture; fine for beds. Colors: Sulphur, Orange, Orange-striped, Sulphur-striped, separate or in fine mixture. Other sorts: Pongee fl. pl., double white; Ranunculoides fl. pl.; Single White Plurals. These sorts mixed.



Canna, Gladiolus-flowered, very showy semi-tropical plants, the foliage green and bronze, and surmounted by immense trusses of large, rich-colored flowers. The plants grow from four to six feet high, delight in rich soil and a sunny exposure, and are gorgeous in beds, the colors ranging from golden yellow to rich crimson. Started early the seedlings make a fine display the first season, and the roots can be lifted in autumn and kept in the cellar, and will thus do service for years. At the South they can be left in the ground over winter. We offer seeds from a fine collection of choice named varieties in splendid mixture.

Capsicum, Ornamental Pepper, very desirable ornamental plants for pots or borders; fruits of various forms and sizes and colors, but mostly shades of yellow and red. Some are very pungent, others mild, but all can be used in culinary work. Chinese Giant, this is the popular sort for stuffing; the peppers are of immense size, in form of Bull-nose, but much larger; pulp sweet and rich; very desirable, ornamental and useful. Other sorts: Celestial, Early Dwarf Red Squash, Hercules, Large Bull Nose, Ruby King, Cayenne Long Narrow, Elephants Trunk, Minature, Long Yellow, separate or all in fine mixture.



Calliopsis, very handsome hardy annuals and biennials, showy and continuous blooming; flowers single and semi-double, mostly shades of yellow and crimson, often variegated. Sow in fall or spring. Often called "Black-eye Susan". Varieties: Nana Compacta bicolor, one foot high, golden yellow with crimson centre; Tinctoria Dwarf Purple, Tom Thumb Beauty, 8 inches high, very compact, golden with red eye; Drummondii, known as Golden Ware, large, golden flowers on long stems, 1 foot high. Separate or mixed.



Carnation, Improved Early. These Carnations grow readily from seeds and bloom the first season, the flowers being large, double, rich and varied in color and delightfully fragrant. The plants endure the winter, except at the far north, where they should have protection. Under favorable conditions they will live and bloom for years. Giant Perpetual-flowering, finest mixed; Malmaison mixed, Yellow, Striped. Also all the Early-flowering Carnations in Special Mixture.



Candytuft, old-fashioned garden annuals, a foot high, very showy and beautiful. Sow where the plants are to bloom, and thin to six inches apart. Sorts: Purpurea, purple; Rose Cardinal, rose; Dunnett's Crimson; Sweet-scented, white; Dwarf large-blooming hybrids mxd. All sorts mixed.

Carduus Marianus, a Thistle-like biennial, handsome, light-green foliage with white veins, pink flowers; Benedictus, Holy Thistle; Kerner's, tall. All sorts mixed.

Carthamus tinctorius, Garden Safron, six feet high, golden flowers.

Catchfly, Silene Armeria, 1 foot; pretty flowers in clusters: Red, White, also mixed.

Celosia Cristata, Coxcomb. These are odd and beautiful plants, a foot high, for beds or pots. The heads of bloom show on small seedling plants and increase in size and attractiveness until cut down by frost. The variety Empress has immense bright crimson combs, and plants set eight or ten inches apart and bordered with Sweet Alyssum make a splendid bed that retains its beauty throughout the season. Golden Yellow and Shades of Red supplied separately. Special mixture of all sorts.

Note.—The quality of seeds of Coxcomb we offer is first class, and the seeds are of good vitality. You make no mistake in sowing them.

Celosia Huttoni, a rare, and handsome sort with dark foliage.

CELOSIA, Triumph of Exposition. (16)



This is a greatly improved Feather Celosia, and one of the most beautiful and useful of annuals for either beds or pots. The plants grow three feet high, branch in pyramidal form, and every branch is tipped with a big feathery plume, rich glowing crimson in color, and lasting until frost. For a showy bed or border this plant has no equal, and for a large pot in the window it is admirable. It

is easily grown from seeds, and seedlings quickly come into bloom. Everyone who grows flowers should have it. Magnifica mixed. Special mixture of all sorts.

Centaurea Cyanus, Bachelor's Button,

a fine hardy annual, very free-blooming, graceful and showy; attractive in the garden, and excellent for cutting the flowers lasting for a day, even when used for personal adornment. Sow in the fall or spring. Single: Azure, White, White and blue, Brick red, Black blue, Mxd. Double: Purple, Azure, Mixed. Nana Compacta: White, Blue, Rose, Mixed. Cyanus sorts in special mixture.



Centaurea Depressa, dark blue, very fine; Moschata: Blue, White, Purple, Mixed. Imperialis: White, Rose, Violet, Gigantea splendens, Favorita, Iphigenia, Armida. Also all these sorts mixed. Red Mammoth Sultan, Yellow Mammoth Sultan, White Mammoth Sultan, Suaveolens, American Alba, Marguerita, White, Odorata hybrida, mixed. Centaurea in splendid mixture.

Cerinthe Aspera, yellow and brown.

Cheiranthus Maritimus, Virginia Stock, very pretty little annual a foot high, blooming freely, and useful for beds in summer or pots in winter. Colors: Red, White, Crimson, Rose, and White and rose.

Chrysanthemum, Annual, free and

continuous-blooming, a foot high, fine for beds in summer or pots in winter. Carinatum single: White, Yellow, Dark scarlet, Large-flowered scarlet, Mixed. Double Dwarf, mxd. Coronarium: White, Sulphur, mixed. Tricolor Double Fringed Improved Hybrids mixed. Plenissima folis aureus, Double mixed. Tricolor Northern Star and Segetum Northern Star mixed. Coronarium Tom Thumb, Golden Gem, splendid. Segetum Gloria, pure white. Chrysanthemum, Annual, all sorts mixed.



The summer Chrysanthemum branch freely and are easily raised from seeds. Started in spring the plants begin blooming early in summer, and are a mass of rich-colored flowers until after severe frosts, making a gorgeous bed. Started in summer and grown in pots they are sure-blooming plants in winter. Like sun.

Cleome grandis, a splendid autumn-blooming annual, three feet high, pyramidal in form, each branch tipped with a big cluster of spider-like rosy flowers. Pungens is somewhat similar. Both are good for beds. Both mixed.

Clintonia, Lobelia-like, Blue, Blue and white, Red-lilac, Mixed. Fine for bracket pots and baskets.

Collinsia bicolor, very pretty annuals a foot high; fine for summer beds. White, Lilac and white; Multicolor, White Violet and Lilac; Tinctoria purpurea. Separate or mixed.

Collomia coccinea, a little annual bearing clusters of rich scarlet bloom; very pretty.

CLARKIA, Single and Double.

The Clarkias are fine hardy annuals growing a foot high, bloom-freely throughout summer. The flowers are both single and double in form, rich in texture and varied in color from white to crimson. Sow the seeds early, where the plants are to bloom, thinning till they stand six or eight inches apart. We offer the finest improved varieties.



Elegans, Double: White, Salmon, Red, Mixed.

Pulchella Single: White,

Red, Margined, Pulcherrima, Mixed.

Pulchella Double: White, Violet, Rose, Pulcherrima, Mxd.

Pulchella Tom Thumb: White, Crimson, Purple, Mixed.

Special mixture of all sorts.

Convulvulus Minor, Dwarf Morning

Glozy, Petunia-like annuals with bright, showy flowers throughout summer. White, Blue, Crimson-violet, Tricolor, Purple, Rose. Separate or mixed.

Cosmidium, Orange Crown, new and handsome; Calliopis-like flowers on long stems.

Cosmos, splendid bright-flowered annuals.

The early large-flowered are four feet high. Colors: White, Crimson, Rose, Yellow and Purple, blooming throughout autumn. Mammoth, 8 feet high, White, Crimson, Pink, and Lady Lenox Shell pink. Double White, Pink, Mixed. All sorts in fine special mixture.

Crepis, Hawkweed, a fine annual; flowers Pink, Golden Yellow, White and gold. Also mixed.

Cuphea Miniata, lovely for a bed; mxd.

Cynoglossum linifolium, 3 ft, white.

Dahlia, Single and Double. Dahlias are

easily raised from seeds, and the plants bloom the first season, making a fine display under favorable conditions. Start the plants early, and transplant to a sunny situation, applying a mulch of stable litter as hot weather approaches. We can supply Hornveld's Giant Hybrids mixed; Dwarf Tom Thumb, single mixed; and Striped and Spotted, single mixed. Double-flowered, mixed. Choice Single and Double mixed. Those who have growing Dahlias only from tubers should try growing them from seeds. They will surely be pleased.



Daisy, Double, English. See Bellis.

Datura, large, coarse plants with showy trumpet-like flowers; easily grown from seeds. Wrightii, big, fragrant, lavender; Fastuosa, Double, White, Violet, Purple, Mixed; Chloranthé fl. pl. Special mixture all sorts.

Delphinium, Larkspur, hardy annual of

great beauty; flowers in long spikes, very showy; sow either in spring or fall, in rows 8 inches apart, then thin the plants to 8 inches in the rows. They make a gorgeous and beautiful bed, and the elegant spikes of bloom are fine for cutting. The finest display may be had by sowing the seeds early in autumn.



Double Branching: White, Red, Lilac, Tricolor, Brilliant Rose. Flesh, separate or mixed; Tall Rocket, mixed; Dwarf Rocket, mixed; Special mixture of all.

Delphinium Grandiflorum, often called Chinese; perennials, but bloom the first season; Dwarf Compact, mixed; Tall or Chinese, single, White, Porcelain, Reddish lilac; Double Mixed.

BRANCHING LARKSPUR.

All sorts in fine special mixture.

Didiscus Cœruleus, 1 ft, blue, umbels.

DIANTHUS CHINENSIS.

(17) GODETIA, Splendid Sorts.



Dianthus Chinensis embraces the Imperial and Japanese Pinks in a great variety of forms and colors. Sown in the spring the seedlings bloom in autumn, and continue till after frost, then endure the winter and bloom early the following year, making a fine show. The flowers are both single and double in form, some in plain rich colors from white to velvety crimson; others of various colors richly marked. Showy in beds and excellent for cutting. We offer:

- Hedderwigii White, Rose, Crimson, Crimson Belle, Eastern Queen and Atrosanguineus, separate or mixed.
- Hedderwigii Double: White, Striped, Purple margined white, Fireball scarlet, mixed.
- Imperialis Double: White, Spotted, Striped, Crimson, Rose.
- Diadem Pinks; Light, Dark, Kerchove, Mixed.
- Laciniatus, Double Fringed: Salmon, Scarlet, Snowdrift, Striped, Malmaison, Marbillis, Purple, Lucifer, Mixed.
- Laciniatus, Single: Zonalis, Princess, Fairy Queen (salmon rose), Snowflake, Mixed.
- Mephisto, Salmon-scarlet, striped blackish brown.
- Nobilis, Royal Pinks, Brilliant red, also mixed.
- Superbus, large, single, deeply fringed.
- Dentosus hybridus, lovely small pinks with eye.
- Stellaris fl. pl., Star Pink, narrow, twisted petals; Mixed.
- Complete Special Mixture of all the above.

Dimorphotheca aurantiaca, 1 ft.; Daisy-like golden flowers throughout autumn. Also Hybrids.

Dracocephalum Moldavicum, Dragon's Head, 2 ft high; gaping blue and white flowers, mixed.

Echium Plantagineum, Bugloss, 2 ft., blue.

Erodium Grinum, Stork's Bill, clusters of pinkish Geranium-like bloom.

Erysimum, beautiful, fragrant, cruciferous annuals, not unlike golden Wallflower. Dwarf Compact, Golden Gem, early-blooming; sown in autumn make a fine early spring bed. Special Mixture of all sorts.

Eschscholtzia, known as California

Poppy; flowers Poppy-like, mostly shades of orange and red, some double, but mostly single; plants dense, ten inches high, fine silvery foliage, above which the bright flowers are freely produced. Single: White, Rose, Cardinal, Sulphur, Orange, Striped; also

all mixed. Double. White, Orange, Rose, Orange Scarlet, also mixed. Complete Special Mixture, Double and Single.

Eucharidium grandiflorum, allied to Evening Primrose; a hardy annual; bright red.

Euphorbia Heterophylla, 2 feet, scarlet bracts. Likes sandy soil and bright sunshine. Variegata, green and white, also both mixed.

Eutoca Viscida, 10 inches high; very pretty in bed or border; free-blooming. Blue, Lilac, White, Mxd.

Fedia Cornucopia, very pretty red flowers in corymbs, six inches high, free-blooming.



These are glorious annuals. They grow a foot high and bear freely large, showy flowers in abundance. They are much used in England for beds. Sow where the plants are to bloom and thin to six inches apart. The colors are bright, and a bed of plants in bloom appears as a sheet of color.

Crimson Glow, intense dazzling crimson, compact, fine.
Fairy Queen, white shading to bluish, carmine spots
Gloriosa, deep blood red, compact, splendid.
Grandiflora Carmine, double, lovely shade, showy.

" Rosea fl. pl. double, large-flowered, bright rose
Mandarin, dwarf, compact, sulphur-colored.
Rubicunda, splendens, brilliant red, fine.
Sebamini grandiflora fl. pl. bright rose, showy.

Whitneyi Brilliant, dazzling scarlet.
" Lady Albemarle, dark crimson, compact.
" Pyramidalis, compact, fine, carmine.

Complete Special Mixture.

Gaillardia, annuals and perennials growing a foot high, the flowers produced on long stems and fine for cutting. The annuals bloom during summer and autumn, and make a fine display, even after frost.

G. Grandiflora is a hardy perennial, lasting for years, and splendid for beds, blooming freely and continuously. Started early the plants bloom well the first season. Annual sorts: Aurora borealis, Salmonica, Lorenziana fl. pl. mixed, Picta fl. pl. mixed, Special Mixture of single. Perennial sorts: Yellow and brown, Blood red, Neudorfer, Dwarf Compact mixed. Also Special Mixture. Single and Double all in Special Mixture.

Gamolepis Tagetes, small golden flowers, not unlike a dwarf Marigold.

Gaura Lindheimeri, 3 feet, pretty white flowers on graceful stems.

Glaucium, 2 feet high. Mixed varieties.

Gilia tricolor. Small handsome annuals

suitable for beds and edgings, free-blooming and showy all summer. The varieties of *Gilia tricolor* would be popular if better known. Varieties: Snow-white, Splendens rose, Mixed. *Gilia laciniata*, dwarf sort with pretty dark blue flowers. All sorts mixed.

The illustration shows a cluster of flowers of *Gilia tricolor*. The plant is spreading in habit, branches freely, and every branch develops a cluster of the exquisite little flowers at its tip. The flowers are cup-like, distinctly marked, and very bright and attractive. They are generally admired.

Hibiscus Manihot, branching, 3 feet high, lovely large sulphur flowers. Laciniatus, cut-leaved, Mxd.

Hibiscus, Crimson Eye. This is a beautiful autumn perennial known scientifically as *Hibiscus coccineus* splendens. It is a native of the sea coast of our southern states, where it is found abundantly in the marshes. The colors range from dark carmine to white, all eyed. The plants are from 5 to 7 feet high. Seedlings started early bloom in autumn. Perfectly hardy.

Hunnemannia, the Mexican Poppy. Grows 2 feet high, covered with large, golden, Poppy-like flowers. Very handsome.



HELIANTHUS, Sunflower. (18)

LUPINUS IN VARIETY.



These are large, rather coarse, showy, hardy annuals, tall and dwarf, single and double, and all desirable for garden decoration. The flowers are mostly in shades of yellow, but some are brown, or show a handsome brown zone. All are of easy culture, bloom early from seeds, and continue to show flowers for a long time.

Large-flowered, Single. *Macrophyllus giganteus*, large leaves and large flowers. *Uniflorus giganteus*, tall, the stem clothed with large leaves, and a single enormous flower at the summit. *Primrose-colored*. Golden Nigger, yellow with black eye. *Bismarckianus*. Tall Russian, huge flowers, the seeds valuable for chickens. Sulphur Gem, black centre. Special Mixture.

Large-flowered Red, New. Single. The plants are like the common Sunflower, but the flowers are brownish red, and yellow with distinct brownish-red zones. Selected.

Large-flowered, Double. *Gibbosus fistulosus*. *Giganteus plenissimus*. *Oculatus viridus*. *Nanus fl. pl.*, variegated foliage. *Multiflorus fl. pl.* Double. In fine Special Mixture.

Miniature Sunflower, Single *Argophyllus*. *Helios*, gold in flowers, branching plants. *Cucumerifolius*, yellow. *Cucumerifolius nanus compact*. Star-shaped Double. Miniature golden. Special Mixture of all Miniature Sorts.

Complete Special Mixture of all sorts.

Ice Plant, See *Mesembryanthemum*.

Jonopsidium acaule, Diamond Flower, a neat little carpet plant with a profusion of violet flowers.

Kaulfussia amelloides, hardy annual;

flowers Blue, Crimson, Rose, very pretty. Mixed.

These are beautiful annuals a foot high, each plant stooling out into a neat little clump, from which the stems push up bearing the attractive flowers. Set eight inches apart they fill the space and produce a wealth of bloom during summer. A bed of mixed colors is especially admired. Sow the seeds in a box or protected bed early in spring, and transplant in cloudy weather for blooming.



Kenilworth Ivy, *Linaria cymbalaria*, white flowered. Grows well in dense shade.

Kochia tricophylla, Summer Cypress, pretty, dense foliage, turning red in autumn, 2 feet high.

Lallemantia canescens, blue, for bees.

Lasthenia Californica, 1 foot high, gold-in flowers an inch-across.

Lavatera, a handsome annual 2 feet high, with small Hollyhock-like flowers. White, Red, Mixed.



The Lupins are beautiful leguminous annuals growing from a foot to three feet high, the flowers of many rich colors and borne in showy spikes. Sow where the plants are to bloom and thin to eight inches apart. *Mutabilis Cruikshankii Hybrids*, Mixed. *Hartwegi*, Mixed. *Hirsutus*, Mixed. *Luteus Romulus*, large-flowered yellow. *Nanus*, Mixed. *Sub-carnosus*, blue. Special Mixture, all sorts.

Layia elegans, Daisy-like yellow flowers with white margin. Annuals, 1 foot high, free-blooming.

Leptosiphon, low, dense annuals bearing a profusion of small, pretty flowers. *Densiflorus*: White, Rose, Mixed. *Androsaceus*: White, Lilac, Mixed. *Luteus*, yellow. *Aureus*, orange. Special Complete Mixture.

Leptosyne, early-blooming annuals for beds. *Douglassi*, golden. *Stillmanii*, bright yellow. *Martima*, yellow. Special Mixture of all sorts.

Lobelia, Annual Varieties. These are very

graceful free-blooming little annuals for edgings, baskets and bracket pots, blooming continually outdoors in summer, and making a creditable display in the window in winter when the plants are started in mid-summer. They are of easy culture, and the profusion of rich bloom makes them popular with people who know of their merits. *Erinus*: *Barnard's Perpetual*, *Erinus White*, *Speciosa superba*, rich dark blue, white eye, splendid. *Kermesina*, crimson, very effective. *Pearl*, white, edged blue. *Crystal Palace*, rich dark blue. *Royal Purple*. Special Mixture of *Erinus*.



Compacta: *Duplex rosea*, double. *Golden Queen*, golden foliage, blue flowers. *Snowball*, snow-white, dense. *Kermesina oculata*, crimson with eye. *White Gem*, pure white. *Belle de Moray*, blue, white eye. *Kermesina*, crimson. *Royal Purple Oculata*, eyed. *White Lady Compact*. *Prima Donna*, velvety maroon.

Ramosa: Large-flowered, showy *Lobelia*, very effective; *White*, *Rose*, *Heavenly Blue*, Mixed. *Tenuior*, fine for baskets; *Cobalt*, blue with white center. Special Mixture.

Hybrida. New large-flowered hybrids of recent introduction: *Amanda*, rosy lilac changing to deep amaranth. *Miranda*, rose. *Sapphire*, deep blue, pure white eye, much used for window boxes and balconies. Special Mixture.

LYCHNIS, Choice Kinds.

(19)

MARIGOLD, In Variety.



The Lychnis are very desirable hardy perennials blooming throughout summer. They are easily raised from seeds, bloom freely the first season, and are showy in beds. *Alpinus*, very dwarf, rose. *Chalcedonica*, one foot high, flowers in big clusters. *Alba. Rubra. Coccinea*, Mixed. *Haageana Hybrida Grandiflorus*, Mixed. *Atroranguineus folis atropurpureis*, blood-red. Special Mixture of all sorts.

Linaria, charming little annuals one foot high, the flowers Snapdragon-like, in graceful spikes. *Aparinoides Golden Gem*, pretty golden flowers in spikes. *Bipartita elegans*, Purple, Violet, Lutea, Mixed. *Marocana Hybrida*, Mixed. *Macedonica*, yellow, orange spot. Special Mixture of all sorts.

Linum Grandiflorum, elegant, slender, free-blooming annuals of the Flax family. A foot high, very showy. White, Red, Rose, Blue, Mixed. *Ustatissimum*, blue. Special Mixture of all sorts.

Lotus Tetragonolobus, known as Winged Pea, scarlet flowers.

Malope Grandiflora, branching plants one foot high, the small flower Hollyhock-like. Colors: Red, White, Rose. Special Mixture of all sorts.

Malva, pretty hardy annuals of easy culture. *Crispa* grows from 6 to 8 feet high, a single stem clothed with crinkled foliage, and remains green till winter. *Mauritiana*, 5 feet high, rose flowers. *Moschata*, a foot high, rose and white flowers, fragrant, free-blooming, and fine for bedding, a perennial. Special Mixture.

Manulea violacea, 1 foot high, violet.

Martynia, vigorous plants with attractive yellow and lavender spotted flowers, some fragrant. Mxd.

Matricaria, Feverfew. Popular, free-

blooming flowers allied to the *Chrysanthemum*. *Parthenium*, double white. *Capensis*, double, dwarf, compact. *Golden Ball*, double golden yellow. *Capensis plenissima*, double white extra select.

Grandiflora fl. pl. white. Special Mixture of all sorts.

Matthiola bicornis. Fragrant Evening stock. Purplish red, deliciously scented in the evening.

Mignonette, *Reseda odorata*. Plants that are popular because of the delicious fragrance of the spikes of bloom, which are abundantly produced. Easily grown from seeds, and bear continually. The dwarf compact sorts are especially suited for pots. *Aurea gigantea*, Golden Queen. *Grandiflora ameliorata*, Golden Matchlet, Bright Red. *Milcs Spinal*. *Pumila erecta*, Parson's New White. *Victorla*, *Pyramidalis Triumph*, *Spiral Defiance*, Common Sweet. Separate or in Complete Mixture.



DOUBLE TALL FRENCH MARIGOLD.

Marigolds are popular annuals because of their easy culture, and their adaptability to almost any soil, situation or climate. The plants thrive in the south, in sandy soil and hot sun, and they will endure drouth better than many other plants. They bloom freely and continuously, and are generally satisfactory. The fragrance of the foliage is much prized by many people. The dwarf native *Tagetes signata* is especially prized for its fern-like fragrant foliage and its profusion of small golden flowers.

Double Tall African: Orange, Sulphur, Lemon, Sulphur Quilled, *Grandiflora* large-flowered. Special Mixture.

Double Dwarf African: Orange, Sulphur, Lemon, Quilled Sulphur. Special Mixture.

Double Tall French: Orange, Gold-striped, Dark Brown, *Fistulosa Brunea*, *Fistulosa Aurea*. Special Mixture.

Double Dwarf French: Dark Brown, Gold-striped, Nana Lutea, Golden Ball. Special Mixture.

French Lilliput, very dwarf, six inches, fine for beds or edgings. Brown and Gold, Spotted, Gold-edged. Mixed.

French Single, fine also for beds and edgings, free-blooming. Gold, margined, Silver King, Striped, Mixed.

Tagetes Signata Pumila, dense, globular plants a foot high, literally covered throughout autumn with golden flowers. Fine for edgings or beds.

Complete Special Mixture of Marigolds.

Mesembrianthemum. Succulent plants of prostrate growth, the flowers of delicate texture and bright in color. They like sandy soil and a sunny situation, and do well in bracket pots or baskets. *Crystallinum* Ice Plant. *Pomeridianum*, mixed.

Mirabilis, Four-o'Clock, old-fashioned flowers, pretty, showy, fragrant, and continuous-blooming. The Tall sorts grow two feet high, and we can supply the following colors: White, White striped yellow, Red, White striped red, Yellow striped red, Quadricolor, Special Mixture. Tall Variegated-leaved, Mixed. Dwarf Variegated-leaved, Mixed. Special Complete Mixture. Four o'Clocks are well suited for children's gardens.

Mimulus, charming plants for a moist, rather shady situation. The Hybrids bear large, exquisite flowers, and are suitable for baskets or pots, blooming well in the window in Winter if the atmosphere is kept moist. We offer the following: Large-flowering Hybrids of *Higinus*, Single and Duplex in fine mixture. *Cardinalis Grandiflorus*, red. Orange, Perfection, Carneys, Special Mixture. *Quinquevulnus Maximus*. Complete Special Mixture of all sorts.

MYOSOTIS, Forget-me-not. (20) **NICOTIANA, Star Flower.**



Everybody loves the delicate little Forget-me-not. The flowers are mostly exquisite blue or pink in charming clusters. They like a moist, rather shady place. Fine for beds, also pots. Sown in autumn the plants bloom before the hot weather comes, and are usually more satisfactory than when sown in spring. *Elegantissima*, White. *Grandiflora*, Royal Blue. *Alpestris rosea*, rose. *Victoria*, White, Rose, Blue. *Distinction*, azure. *Special Mixture*. *Stricta Grandiflora* mixed. *Dissitiflora* Blue. *Palustris* mixed. Complete *Special Mixture*.

Nasturtium, Tom Thumb. Beautiful annuals for beds, borders and window boxes. The foliage is handsome, clean and attractive, and the flowers large, showy, of delicate texture and of a great variety of colors and variegations. Plants start quickly from seeds, and begin to bloom early, continuing throughout the season. We have Pearl White, Lutea Yellow, Golden King, Beauty of Malvern Orange-scarlet, *Atrococcineus* scarlet, *Empress of India* Crimson, *Coccineus* Brilliant scarlet, *Aurora Terra Cotta*, Rose, Brilliant Dark scarlet. *Chameleon* Variegated. Separate or Mixed.



Nemesia, very beautiful annuals that should be better known. In beauty and profusion they are rivals of the *Phlox Drummondii*, and are desirable for both beds and pots. The colors are very striking, and many show distinct variegations. Dwarf Compact: White Gem, Blue Gem, Triumph, Tricolor. *Special Mixture*. *Strumosa* Tigrina, Variegata, Coccinea, Mixed. *Strumosa* Dwarf, Yellow, White, Mixed Complete *Special Mixture*.

Nemophila, spreading little annuals with large, bright flowers, mostly blue, often spotted. Very pretty. Do best sown in autumn. *Discoidalis*, brown eyed white. *Insignis* White, Sky Blue, *Marginalata*, *Crambeoides*, blue. Complete *Special Mixture*.

Nigella, Love in a Mist, Devil in a Bush.

Charming hardy annuals of easy culture, the flowers large, double, exquisite in form, set off by fine-cut foliage. Sow in the garden early, or sow in autumn. *Miss Jekyll*, Sky Blue, the finest variety, new. White, fine. Dwarf White, Blue, Mixed. *Hispanica*, Blue, White, Mixed. The seeds of *N. Damascena* are deliciously fragrant. Complete *Special Mixture*.

Nicandra, Physaloides, often known as Shoo-Fly Plant. It grows 5 feet high, and bears an abundance of large bluish white, bell-shaped flowers. It is said that house flies will not stay where these plants or branches are found.

Nierembergia, very graceful and free-blooming plants for beds or pots. Start early for beds. Grown in pots they bloom well in winter. *Frutescens*, Blue, White. *Gracilis*, lavender. *Special Mixture* of all.



Very desirable as bedding plants, the flowers appearing in profusion throughout the season. The plants grow two to three feet high, and like rich soil and a sunny situation. *N. Affinis*, white, is deliciously scented, and the Hybrids are of various fine colors. *N. Sanderae* is more graceful, and the smaller flowers are produced in abundance, and remain open all day. They are especially useful for beds. *Affinis*, White, Choice Hybrids mixed. *Acutifolia*, white. *Macrophylla gigantea*, large-leaved. *Atropurpurea*, Purple, *Sylvestris*, five feet high, long drooping trumpets in clusters. *Sanderae* Hybrids: White, Carnea, Purple, *Ruberrima* red, *Sanguinea*, red, Mixed. Complete *Special Mixture* of all sorts.

Obeliscaria pulcherrima, a pretty annual a foot high, the flowers a central black-brown column with broad, drooping, gold-margined petals.

Oenothera, Evening Primrose. Very hand-

some garden flower, mostly a fine shade of yellow. The seeds may be sown early in autumn, as the young plants are perfectly hardy. The plant shown in the illustration is of *Oenothera Lamarckiana*, a biennial which is fine for a clump or screen. *Oenothera Youngii*, a hardy perennial, is beautiful in a bed or border. *Acaulis alba*, dwarf, white. *Lamarckiana*, 5 feet, large yellow flowers opening in the evening. *Speciosa*, fragrant. *Fraseri*, deep yellow. *Youngii*, 1 ft. high, large yellow bloom. *Special Mixture* of all sorts.



Oxalis Valdiviana, dwarf, yellow, fragrant.

Perilla Macrophylla compacta, large, dark-colored leaves, not unlike a *Colens*. *Nankinensis*, chocolate-colored foliage. *Special Mixture*.

Phacelia, Pretty little annuals bearing blue flowers in scorpioid racemes. *Special Mixture*.

Polygonum orientale, hardy annual six

to eight feet high, the top spreading and covered with drooping carmine flower clusters. The seeds should be sown late in fall to germinate early in spring. Once established in a garden the supply of plants is readily kept up by self-sown seeds. Plants thus started appear early in spring, and make the finest specimens, becoming larger and more floriferous until frost. They are especially well suited to grow among plants in the back-ground, or among shrubbery, as they bloom abundantly and retain their bright color till frost.



PANSY, Brown's Improved Mammoth.



THERE are many good strains of Pansies, but decidedly the best of the lot is truly the Improved Mammoth Pansies developed by Mr. Peter Brown, the progressive florist of Lancaster County, who makes a specialty of growing Pansies. He spares no pains or expense to get the most satisfactory results, and the seeds he produces can be absolutely depended upon for the most healthy and vigorous plants, and the largest and most beautiful flowers. The seeds of this grand strain were all grown by Mr. Brown, saved from selected plants. The price is 10 cents per packet, or three packets for 25 cents, but they are well worth the money, for these Pansies must not be compared with the common strains of cheap Pansies so often recommended. Give these Pansies a trial and you will buy no other. We supply them in Yellow, and Mixed Colors.

Fine French Pansies:

- Adonis, light blue, with white margin, dark spots, beautiful.
- Bronze-colored, dark brown.
- Blotched and Striped, very large flowers richly marked, fine.
- Brilliant, fiery red, with darker spots on the three lower petals.
- Frilled and veined, colors mixed.
- Indigo Blue, very rich shade, strikingly attractive. Splendid.
- Lord Beaconsfield, deep violet, banner petals almost white.
- A popular variety.
- Masterpiece, handsome variety.
- Orchidæiflora, the Cattleya-flowered Pansy. Rare light shades, large, frilled flowers, very fine.
- Parisian Blotched, a fine French variety, strikingly variegated.
- Peacock, Peacock blue with white edge. Very handsome.
- Purple, large-flowering, large, rich, dark flowers. Fine Pansy.
- Sky Blue, a much admired Pansy, large, lovely sky blue, splendid.
- Snowflake, giant-flowered, new.
- Yellow, without eye, very large golden flowers, very effective.
- Fine Special Mixture of all sorts.

Please note that the above French Pansies are imported, and of the finest quality, but not of the Mammoth strain developed by Mr. Brown which can hardly be approached.



FLOWER OF BROWN'S IMPROVED MAMMOTH PANSY.

The Pansy is probably the most popular of seedling flowers. They are easily raised, the young plants endure the winters at the north under favorable conditions, and begin to bloom freely early in spring, almost as soon as the snow is gone. In the south plants started in early autumn will bloom throughout the winter. At the north the plants started so as to come into bloom in autumn will bloom in spring and early summer, making a glorious display. Such plants, if placed in shallow trays a foot square, early in spring can be sold with profit, as there is always a great demand for them when they come into bloom. To have fine beds of spring-blooming Pansies sow the seeds early in August and transplant early in September to rows eight inches apart, setting the plants six inches apart in the rows. They begin to bloom before winter, and if snows come while budding and blooming you can dig the flowers out from beneath the snow during mid-winter. Such plants will become a mass of lovely big "faces", bright and beautiful as soon as the warm sunshine and gentle showers awaken them in spring.



PETUNIA, Choice Bedding.



Petunias bloom early from seeds and the plants increase in beauty until frost, and bloom more or less until the ground freezes. They are therefore fine for beds, and they endure sun and drought better than most other flowers. The compact varieties are also well suited for pots and porch boxes. The flowers are always bright and attractive, and appear in many pleasing shades. In the evening they emit a delightful perfume.

Compact Varieties: Rosy Morn, bright rosy pink with white throat. This is a grand Petunia for beds as well as pots. The plants are dense, and smothered all the season with the charming flowers, as shown in the engraving. Try this fine Petunia. It will please you. Adonis, carmine with white throat. Dwarf Compact Striped and Mixed, very effective in beds, lovely colors and striking variegations.

Spreading varieties mixed. Large-flowered varieties mixed. Double-flowered varieties mixed. Complete Special Mixture of all sorts.

PHLOX DRUMMONDII.



Beautiful annuals for beds, growing a foot high, and covered with clusters of bright flowers. They bloom all summer, and make a showy bed. They can also be grown in pots and boxes.

Large-flowered: Bright rose with white centre, Isahellina, yellow. Leopoldii, deep pink, white eye. Rosea Oculata, rose with white eye. Violet with white centre. Meteor, scarlet. Brilliant, light rose with dark centre. Rosy Chamois, yellow centre. Cinnabar Scarlet. Purple. Crimson-rose. Tricolor. Special Mixture.

Nana Compacta, dwarf, compact sorts: Apricot yellow. Alba Oculata. Cœrulea stellata. Rose with purple centre. Violetish-red with white centre. Mirabilis, salmon-pink, white centre. Special Mixture of all sorts.

Fimbriata and Cupidata mixed. Semi-double, fine mixture. Complete Special Mixture.

Portulaca, Large-flowered. Annuals bearing bright, cup-like flowers in the morning, but closing in the afternoon. They like sandy soil and a sunny situation. If well enriched the plants grow luxuriantly and bloom very profusely. Single-flowered mixed. Double-flowered mixed. Special Mixture Double and Single.

Physalis Franchetti, the "Chinese Lantern Plant". The beauty of the plant is in the long stems of bright orange-red inflated coverings of the fruit. When cut and dried, these wreaths are fine for decoration in winter. The fruit is edible. It is a hardy perennial, and when once started it will take care of itself.

POPPY IN VARIETY.



Very showy and beautiful hardy annuals from one to two feet high, the flowers large and silky, and very freely produced. Sow where the plants are to bloom either in autumn or very early in spring, and thin till the plants stand eight inches apart. Avoid crowding, as it will ruin the plants.

Tall Carnation-flowered: Red, white striped. Purple. Ash Gray. Dark Lilac. Rose and white. Special Mixture.

Carnation-flowered, Dwarf: Carmine-rose. White-edged. White, fringed. Lilac. Rose. Mikado, bright rose and white. Rose and crimson. White, red-striped. Bichon, dark rose. Scarlet. Special Mixture.

Pæony-flowered, Tall, Broad-petaled: White, Creamy white. Lilacea, white with violet blotch. Light lilac, Pale light rose. Brilliant rose, Salmon-pink, Cherry red. Cochineal-red with white blotch. Cochineal-red with purple blotch. Bright rose. Vermillion-red. Cardinal-red. Striped red and white. Carmine-red. Currant-red. Deep purple. Rich Pansy-violet. Lilac and scarlet. Light Mordore. Maw Gray. Special Mixture.

Pæony-flowered Fringed: White with lilac shine. Cream yellow. Mauve rose. Cherry-red. Vermillion-red. Currant-red. Heliotrope. Plum-violet. Special Mixture.

Pæony-flowered Dwarf, Broad-petaled: Lilac. Black. Rose. Salmon-rose. Scarlet and white. White and light purple. Dark scarlet. Purple. Special Mixture.

Chinese Double Dwarf: White, Slate Grey, Bright rose. Bright red. Special Mixture.

Hybrid Varieties: Cardinal, Umbrosium single, Umbrosium Double, Admiral, single, white with scarlet margin. Danebrog, single, scarlet with white blotch. Mephisto, single, scarlet, black blotch. Mephisto, rose. Glaucium, tulip-flowered. Murselli Mikado, double, white, margined purple. Fire King, single, fringed, orange-scarlet. Splendens, double scarlet. Chas. Darwin, rich dark purple.

Ranunculus-flowered, Double: White, Slate with gray ground, Scarlet, Rose, Scarlet with white edge. Dark red. Dark red with white edge, Salmon. Special Mixture.

Shirley Poppy, Tall. Single with light-colored stamens.

Shirley, Dwarf, similar to above, but not so tall. Many rich colors, light-colored stamens. Mixed.

Complete Special Mixture of all kinds.

Ranunculus Asiaticus, superbissimus, lovely perennials that bloom the first season when the seeds are sown early. The plants grow a foot high and bear large, cupped flowers in autumn. They like a moist bed and sunny situation. Mixed colors.

Ricinus, large, showy plants of easy culture, the elegant big leaves in various shades are very attractive. Borboniensis arboreus, 15 feet high. Sanguineus, blood-red stalks and fruit. Gibson, dwarf, red. Cambodgensis, reddish. Special Mixture of all sorts.

Ricinus is one of the largest and finest of semi-tropical plants, and has a grand effect when judiciously grouped. It delights in sandy soil and hot sun, and will grow where many plants would die. In the far south the plants are evergreen perennials, and will grow and bloom for years, becoming veritable trees, very beautiful, and supplying grateful shade.



SALPIGLOSSIS, New.



A very beautiful, easily grown annual is the new Large-flowered Salpiglossis, a flower of which is shown in the engraving. The plants of the Tall sorts grow three feet high, and of the Dwarf sorts about half that height. They are fine in a clump or bed. The flowers are exceedingly rich in color and texture, and are exquisitely penciled and marked. New Superbissima: Brilliant Crimson, Chamois, Rose, Light blue with gold, Brown with gold. New Gloxinia-flowered: Yellow with white border, Magenta with yellow throat, Rosy Chamois with carmine centre, Carmine-red striped yellow, Violet. Dwarf sorts mixed: Complete Mixture.

Ricotia Lunaria, little annual, fine for rockeries and edgings; flowers lilac-rose, borne in profusion.

Rudbeckia, fall-blooming plants bearing golden flowers. Amplexicaulls, Baby Golden Glow Sullivanti. Special Mixture.

Salvia, very rich-flowered and showy flowers. They belong to the Mint family, and, like most of the mints are not always prompt in germination. Bonfire, the elegant bedding Salvia, so popular among florists, belonging to *Salvia Splendens*, flowers of richest scarlet. *Splendens* mixed. *Farinacea*, bright blue. *Horminum*, red-top. *Coccinea*, mixed. *Bicolor Dichroa*, blue and white. *Sclarea*, coarse, rose. Special Mixture of all sorts.



Sanvitalia procumbens fl. pl., a creeping annual with double golden flowers in autumn.

Scabiosa atropurpurea, Double. These were formerly known in old gardens as Mourning Bride. The plants are three feet high, the showy desirable flowers borne on long stems. The Dwarf race grows about a foot high, and are fine for beds or winter-blooming in pots. Tall: Flesh, Rosy-carmine, Purple, Purple and white, Blue, Cherry and white, Violet, mixed. Dwarf: Red, White, Carmine, Sky Blue, Flesh, Crimson, Lilac, Purple, Rose, mixed. Special Mixture, all sorts.

Schizanthus, Butterfly Flower. Delicate annuals, the flowers very graceful in form, and appear as a flock of diminutive butterflies. Very free-blooming, and blooms for a long time in summer. When grown in pots in autumn they bloom well in the window in winter. *Kinds-Grahamii*, Carmine, Rose, Mixed. *Hybrida Grandiflora*, red. *Pinnatus papilionaceus* mixed. *Pinnatus hybridus nanus* mixed. *Retusus*: White, Rose, Purplish-Crimson, mixed. Special Mixture of all sorts.



STOCK, Ten Weeks.



A first-class annual for either beds or pots is the Ten Weeks Stock. The plants start readily from seeds, and the early-flowering kinds bloom throughout summer and autumn. The flowers are large, very fine in texture, double, deliciously fragrant and borne in spikes. The plants are continuous-blooming, and are not troubled with any pest except the little black beetle when seedlings, and dusting with wood-soot while the dew is on is an effective remedy. In transplanting choose damp weather, and press the soil firmly about the roots; then shade.

Mammoth Hollyhock-flowered: White, Light Blue, Rose, Deep Rose, Crimson, Blood-red, LaBrilliant, Blue Mixed. Early-flowering Dwarf: White, Brick-red, Dark Violet, Chestnut, Apple-blossom, Carmine, Blood-red, Brown-violet, Black-brown, Rose, Dark Crimson, Red-brown, Pure Yellow. Special Mixture.

Perpetual Perfection: Apple-blossom, Blood-red, Flesh, Golden Chamois, Brilliant Rose, Brilliant Lilac, Light Blue. Special Mixture.

Large-flowered French: Carmine-red, Light Violet, Salmon-rose, Reddish brown, Violet, Summer Excelsior White, Princess Alice White. Special Mixture.

Giant of Nice: Queen Alexandra, rosy lilac, Carmine-red, Rose of Nice, rosy mauve, Beauty of Nice, flesh. Mixed.

Other sorts: Large-flowering Wallflower-leaved. Mixed. Dwarf Bouquet, finest Mixed. Victoria Bouquet, Mixed. Pyramidal, light blue. Dresden Perpetual, dark crimson, and dark carmine. Princess May, primrose-yellow. Mixed. Complete Special Mixture of all varieties.

To have fine Ten Weeks Stocks give the plants good attention from the time they appear above the ground until they begin to bloom. Neglected plants become stunted and bear only single flowers. Carefully saved seeds and careful treatment will yield satisfactory results.

Saponaria calabrica, hardy annuals good for edgings and borders. White, Rose, Scarlet. Mixed.

Schizopetalon Walkeri, a Chilean annual a foot high, fragrant white flowers deeply fringed

Senecio, (*Jacobæa*) Double Dwarf, plants a foot high, bearing pretty double flowers. Isabellina yellow, Dark Violet. Special Mixture.

Shortia Californica, an annual six inches high, flowers Daisy-like, yellow with orange centre. Fine for an edging, or for window pots in summer.

Solanum, Ornamental plants with attractive foliage and pretty flowers and fruits. Macrocarpa, 1 foot, scarlet fruit. Marginalatum. Racemigerum, small, currant-like berries. Melongena, Egg plant, striped fruits. Warscewiczoides, 6 feet high, stalks covered with strong spines. leaf stem and mid-ribs with red spines. Fine for a group. Special Mixture



Sphenogyne speciosa, an annual a foot high, flower Daisy-like, shaded yellow and white.

SILENE in Variety.



Very handsome hardy annuals, the delicate little flowers borne in dense clusters, and very showy. Sow either in spring or fall. *Silene armeria*, known as Catchfly, White, Red, Mixed. *Dichotoma. Fortunei*, bright rose. *Maritima*, pink. *Pendula Compacta*: White, Rose, Mixed. *Schafta*, rose, very floriferous. Special Mixture.

Valerian. Garden Heliotrope, Plants a foot high, bearing clusters of small, pretty, fragrant flowers at the tip of the branches. Fine for a border.

Venidium fugas, a low annual not unlike *Dimorphotheca* in habit and flower; yellow, showy, fine.

Vinca rosea, fine plant a foot high, for beds or pots. Flowers Phlox-like, bright and freely produced. Likes sandy soil and hot sun. Pure white, White with eye, Rose. Special Mixture.

Viola, Tufted Pansy, Mixed. *Munbyana*, the Algerian Violet, dark blue, hardy perennial.

Virginia Stock, little annuals ten inches high, the flowers small, profusely borne and very pretty. Fine grown in masses, and grouped in a pot. Started in autumn in pots they bloom well in winter, Red, White, Crimson King, Rose. Compact White, Compact Rose. The Compact sorts are best for pot culture. Complete Special Mixture of all sorts.

Virginia Stock is known as *Cheiranthus maritimus*. It is one of the pretty little cruciferous annuals that any person can grow, and makes a fine out-door bed. It also does well in a sunny window, blooming profusely.

Viscaria oculata, 10 inches high. Flowers single, borne on slender stems, pretty and showy. Dwarf Blue, Brown-red, Mixed.

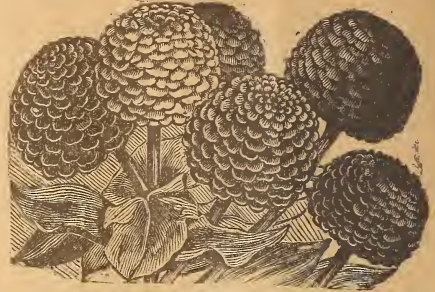
Verbena. Hybrids. Verbenas should be more popular. They are easily grown from seeds, bloom from early summer till after frost, are bright in color and borne in clusters, and are deliciously fragrant. They are excellent for beds, and if grown in pots in autumn will bloom well in a sunny window in winter. Blue, White, Rose, Purple, Blue with white centre, *Auriculiflora*. Special Mixture of all.



Wallflower. Early Parisian, charming, fragrant-flowered plants blooming freely during autumn, and if grown in pots do well in the window in winter. They are popular market plants in Paris, and should be better known here. Colors: Golden Gem, Yellow with green buds, Brown, Belvoir Castle (dwarf, golden yellow), Primrose Gem, Purple, Yellow with brown buds, Early Paris Market (bright brown). Special Mixture.

Whitavia, a charming, early-flowering annual ten inches high, the flowers exquisite little bells in profusion. White, Blue, Azure with throat. Mixed.

ZINNIA, Improved Double.



This is one of the few annuals that deserves general cultivation. The plants start quickly from seeds, soon come into bloom, and increase in beauty until frost. The flowers are large, double, of many rich colors, and always have a striking effect against the dark green foliage. The plants do not have an enemy, and will endure sun and drought that would kill many other annuals.

Bedding Zinnias: White, Sulphur, Golden, Salmon-rose, Scarlet, Purple-red, Red, Violet, Fire King, Striped, Mxd. Robust Sorts: Flesh-white, Carmine-red, Scarlet, Violet, Black-purple, Orange, Cardinal, Lemon-color. Mixed. Lilliput, mixed colors. Pigmaea or Tom Thumb, mixed colors. *Crispa grandiflora*, twisted petals, fine, mixed. Curled and Crested, beautiful, somewhat like a crested *Chrysanthemum*, fine for beds. Mixed colors.

Everlastings and Grasses.

These are attractive in the garden, and when cut and dried are fine for winter bouquets for room decoration. The flowers are mostly cut when just opening, except *Gomphrena* and *Xeranthemum*. Cut in the evening and hang with the stems up in a shady place.

Acroclinium Double, pretty annuals in the garden and fine for cutting. A foot high. Rose, White, Mixed. *Ammobium alatum*, new, large-flowered. Plants branching, 2 feet high. Flowers white double, showy.

Gomphrena globosa, fine, showy annuals growing a foot high. Flowers globular, very bright, and elegant either in the garden, or when dried. White, Flesh, Variegated, Purple, also Dwarf Compact Purple. Special Mixture. *Gomphrena* is often called German Clover. Fine for a bed, retaining its beauty till frost; when cut does not fade.



Gypsophila elegans, a lovely little bedding annual, good for bouquets green or dry. *Elegans Grandiflora* pure white. *Elegans carmine*, *Roses viscosa*. *Elegans White Compact*, *Muralis* pink. Special Mixture of all. *Helichrysum monstrosum*, fine for beds, 2 feet high, free-blooming, showy. Large, handsome double flowers, unequalled for drying. White, Yellow, Brown, Purple, Salmon-red, Rose. Special Mixture. *Bracteatum* Double Dwarf mixed. *Brachyrhynchum*, yellow.

Rhodanthe Manglesi, 1 foot, annual. Flowers bell-shaped, drooping, very pretty. White, Rose, Maculata, Mixed. *Statice sinuata*, a desirable garden flower good for drying. Blue, White, Rose, Mixed.

Xeranthemum, very handsome, large, double, showy flowers, on long stems. *Superbissima*: White Rose Red, Mxd.

GRASSES.

Agrostis nebulosa, elegant, fairy-like panicles, pretty for bouquets green or dry. *Pulchella*, more dwarf, but equally valuable.

Avena sterilis, Animated Oats, the seeds move as if endowed with life. Black-seeded. White-seeded. *Anthoxanthum odoratum*, Pueli, Annual Sweet Vernal.

Briza Maxima, large. *Minima*, small. Mixed. *Coix lachryma* Job's Tears, the seeds often used as beads. *Eragrostis elegans* Love Grass. Elegant for bouquets.

Gymothrix latifolia, striking effect grown as a specimen. *Gynerium argenteum*, Pampas Grass, plumes 2 feet long. *Hordeum jubatum*, bushy heads, fine for bouquets.

Lagurus ovatus, Hare's-tail grass, dense, silvery heads. *Panicum capillare violaceum*, violet heads, beautiful.

Fruiteucum, tall elegant in clumps. *Pennisetum Villosum* (Longistylum), a fine grass. *Sorghum Halpense*. S. Nigrum. Mixed.

Zea Japonica Gigantea Quadricolor, an elegant ornamental Corn the leaves striped green, white, yellow and pink. *Graecilima* fine variegated.

FINE ORNAMENTAL CLIMBERS.

THE Ornamental Climbers are among the most useful and beautiful of plants. They fill a place in adorning the home that no other class of plants can fill. Always get a few when ordering. Can be used for covering pillars, forming screens, or hiding unsightly objects.

Bean, Scarlet Runner, a handsome blooming vine of rapid growth. Flowers bean-shaped, in clusters, rich scarlet in color, and long-blooming. Also White-flowered, and Painted Lady, pink and white.

Calampelis scabra, a tuberous-rooted vine, the flowers in clusters, orange-red.

Canary Creeper, this is *Tropæolum pergrinum*, a pretty, clean vine ten feet high, the flowers small, deep yellow, in profusion.

Cardiospermum, Balloon Vine, very graceful, six feet high, elegant for a trellis. Its beauty is in its pretty foliage and balloon-like seed vessels. *Halliacabum, Hirsutum*. Mixed.



Cobæa scandens, a Mexican vine, easily raised from seeds. It grows 20 feet high, has graceful foliage, and bears throughout summer large, purplish bells on long stems. A splendid vine.

Cypress Vine, a well-known vine twelve feet high, with lovely, dark green, deep-cut, filmy foliage, and small, rich flowers. Scarlet, White, Rose, or Mixed.

Convolvulus Major, the old-fashioned Morning Glory. A hardy annual of rapid growth, the flowers large, bright, and showing many colors and variegations. White, Tricolor, Lilac, Carmine, Dark Red, Rose,



Dark Blue, Pale Blue, Incarnata (scarlet), White striped violet, White striped rose, Crimson, Spotted, Deep Purple, Striped, Light Carmine, Purpurea Quinata (white with dark violet spots), Special Mixture of all. Double-flowered Mixed.

Cardinal Climber, a reputed hybrid of Cypress Vine. It has red flowers and cut foliage much like Ivy-leaved Cypress; grows 15 feet high.

Centrosema, a leguminous annual with large, Pea-like pink flowers, very attractive.

Dolichos Lablab, Hyacinth Bean, a very rapid, profuse-blooming annual vine, showy in flower and equally showy in fruit, the big flat pods being of a rich Hyacinth-red color. Purple, Violet, Dark Red. Mixed.



Gourds and Cucumbers. These are very useful vines of quick growth, some valuable for their graceful foliage, some for flowers, and some for fruits, while some have merits in all of these qualities. *Bryonia dioica*, red berries. *Cucurbita Melanosperma* Pepo, green-yellow. Pear-shaped: White, Striped, Bicolor, Mixed. Apple-shaped, early. Ornamental Mock Orange, Flat Striped, Japanese Nest Egg, Hercules Club. Large Bottle, Flat Corsican, Miniature, Powder Horn, Malabar Melon, Small Egg-shaped White. Dish-cloth Gourds: *Luffa acutangula*, *Cylindrica*. *Momordica Balsamina*. Bottle Miniature. *Cyclanthera pedata*. *Lagenaria*: *Mininia*, *Rotunda*, *Calabash Pipe*, *Sugar Trough*, *Spoon*. Hundred-weight Pumpkin: Large Yellow, Globe Mammoth Etampes, bright red, Large Gray Bologne, Very Large Tours, Large Bronze-colored, *Tricoeanthes coccinea*. *Cucumer* Japanese Climbing, *Echinocystis Wild* *Cucumber*, *Cucumis flexuosus*, *Cucumis Dudaim* odoratissimus. Ornamental Cucumbers mixed. Ornamental Gourds, small, mixed.

Special Mixture of Gourds and Cucumbers.



Ipomœa Quamoclit, Ivy-leaved Cypress, a very graceful vine with small scarlet flowers all autumn.

IPOMOEA in Variety.

(26) NASTURTIUM, Tropaeolum



The Ipomoeas are beautiful vines of the Morning Glory family. They grow freely and bloom abundantly throughout the season. They will grow twenty feet high, and form a handsome screen for a porch or summer-house, or can be used to cover and beautify old fences or buildings. Kinds: Coccinea mixed. Hederacea: Blue, Marmorata Rosea, Cœlestina, Grandiflora alba, white, Grandiflora superba, sky blue on white ground, striped-leaved. Hederacea mixed. Huberii mixed. Limbata Elegantissima (beautiful violet with distinct white edge). Nil Grandiflora. Setosa, Rubro cœrulea, Bona Nox, Roxburgii white, Superba fol. variegatis mixed.

Complete Special Mixture of all sorts.

Japanese Morning Glories. These are handsome vines with showy and beautiful flowers, not unlike the common Morning Glory, but more tender, and not so free-blooming. Collata mixed. Mikado mixed. Imperialis mixed. Special Mixture of many fine varieties.

Loasa Aurantiaca, a pretty little vine with stinging hairs and brick-red flowers.

Lophospermum scandens, a robust vine with pubescent foliage and bell-shaped purple flowers.



Maurandya, a pretty, dense-foliaged vine six feet high, covered with lovely drooping bells in autumn. A handsome rich green vine after frost has injured other things. Lilac, White, Rose, etc. Mixed.

Mina lobata, an annual vine 20 feet high, bearing clusters of rich scarlet flowers. Sow early indoors.



Elegant annual vines with large, delicate-textured, rich-colored flowers, blooming continuously until frost. Useful for covering a trellis, forming a screen, for growing in a porch box, and for covering rocks or unsightly objects.

Giant Climbing varieties: Pearl, cream white. Dunnett's Orange. Atropurpurea, purple. Chameleon, flaked and spotted, dark-leaved. Schœnerlanum, straw-color, spotted. Edward Otto, bronze. Orange-striped. Nan keen, yellow. Bright Rose. Vesuvius, rich terra-cotta red. Schillingii, yellow, spotted brown. King Theodore. Special Mixture. Per lb \$1.25, ¼ lb 40 cts., 1 oz 15 cts.

Lobblanum, a more delicate and floriferous race of Climbing Nasturtiums: Cardinale, dark-leaved, beautiful cardinal color. Splitfire, rose-scarlet. Victoria, light yellow, stained red. Brilliant, dark scarlet. Bright yellow, stained purple. Yellowish-white, stained purple. Chaxianum, yellow, spotted red. Brilliant Fuizens, scarlet. Firefly, orange, spotted blood-red. Queen Victoria, scarlet. Special Mixture of all sorts, 1 oz 20 cts.

Other Choice Nasturtiums: Madam Gunter Hybrids, mixed. Variegated-leaved mixed.



Sweet Pea, Improved Large-flowered. An indispensable vine growing from four to six feet high, and literally covered with clusters of very sweet-scented, rich-colored and beautiful flowers. Sow in fall or early spring in a trench, covering a half inch deep. Hoe the soil in about the plants as they grow until the trench is filled. Mulch with chopped tobacco stems, and provide a chicken-wire trellis several feet high, tobacco stems being woven into the meshes. At the south rows may be planted in September. The mixture offered is first-class, and will yield satisfactory results. Per lb \$1.00, ¼ lb 30 cts., 1 oz 10 cts.

Thunbergia alata. A splendid vine ten feet high, suitable for out-door culture or window pots, blooming freely summer or winter. A fine winter-blooming vine in Florida. White with dark eye, Buff with dark eye, Pure White, Light Yellow, Orange, Special Mixture.

Vicia Gerardi, a pretty climber. Flowers dark violet. Also Atropurpurea, purple, and Injuga, violet. Mixture.

BIENNIALS AND PERENNIALS.

BIENNIALS are plants that come up one year, bloom the next, then die. Perennials are such as live from year to year. A dollar spent for these seeds is money well spent. They are the poor man's flowers, and deserve general cultivation. They will take care of themselves when once started. Do not fail to start a big bed of these flowers this year.

Achillea Ptarmica fl. pl., 18 inches high, flowers pure white. Fine for cutting.

Agrostemma coronaria, two feet high, branching and covered with bright flowers the shape and size of a single Pheasant-eye Pink. Atrosanguinea, crimson. Alba, white. Coccinea, scarlet. Alba oculata, white with rose centre. Special Mixture.

Anemone Pennsylvanica, 18 inches high. White, single, cup-like flowers on long stems. In autumn the cottony seed-balls are showy after frost has destroyed the foliage.

Anthemius Kelwayii, two feet, dense clumps of golden Daisy-like flowers. Makes a fine, showy bed. A very desirable and lasting perennial.

Aquilegia, hardy perennials with graceful,



pretty and showy drooping flowers of many fine colors. Double and single. Will grow in sun or shade. Single-flowered: White, Dark Pink,

Light Pink, Yellow and red, Canadensis red, all with long spurs. *Cœrulea alba*, *Lutea*, *Cœrulea*, *Cœrulea hybrida* mixed. *Chrysantha*, yellow, Red and yellow. Pink and purple mixed. Double mixed. Single and Double Mixed.

Arabis alpina, a low early spring-blooming hardy perennial for beds or rockeries. Flowers in clusters in abundance, lasting throughout spring.

Asperula hexaphylla, a low hardy perennial with white flowers in clusters. Useful for cutting.

Aster Alpinus, blue flowers, golden centre.

Aubrietia deltoides, a profuse-blooming creeping perennial for edgings, rockeries, etc. Lilac.

Barbarea vulgaris folis variegatis, a foot high. An early Cress, variegated foliage and yellow flowers.

Bocconia cordifolia, known as Plume Poppy. It grows from eight to ten feet tall, with silver-green foliage and big tawny plumes in autumn. Hardy, lasting, forming a stately clump.

Boltonia glastifolia, a tall, branching, Aster-like plant, four feet high, covered with rosy-white flowers late in autumn. A really fine hardy perennial.

Bupthalamum cordifolium, eight feet high, bearing golden Daisy-like flowers in autumn.

Campanula. A very valuable class of Biennials and Perennials. The beautiful Canterbury Bells belongs here—*Campanula medium*, biennial, single, cup and saucer, and double. *Campanula Præmidialis* is the Chimroy *Campanula*, growing seven feet high, becoming spikes of drooping bells. *Campanula Carpatica* is creeping, and fine for baskets or window boxes. Medium Single: White, Rose, Purple, Blue, Reddish Purple, Striped, Mixed.

Madium Double: White, Rose, Purple, Blue, Lilac, Reddish Purple, Striped, Mixed.

Calycanthemum, Cup and Saucer: White, Lilac, Purple, Blue, Mauve, Lavender, Striped, Mixed.

Pyramidalis mixed, *Carpathica* mixed. *Rotundifolia* blue, *Glomerata acanthis*. Special Mixture of all sorts.

Cassia Marilandica, a pretty native plant four feet high, with compound leaves and clusters of gold and black flowers. Showy.

Catananche. Double, Blue, White, Mixed.

Cerastium grandiflorum, white, Daisy-like flowers in profusion. *C. Tomentosum*, silvery foliage.

Chelone barbata, three feet high, branching; small, scarlet Cuphea-like flowers all summer.

Chrysanthemum Japonicum, mixed.

Cineraria Martima Diamond, silvery, fine.

Clematis recta, white, 3 feet high, erect.

Coccinea indica, a perennial gourd-vine.

Cocopsis grandiflora, a very fine lasting hardy perennial, two feet high, blooming freely all summer. The flowers are golden yellow, Daisy-like, on long, strong stems, very showy in the border, and splendid for cutting. It is one of the good things. The plants soon stool out into big clumps, and can be divided if you wish. They will thrive in grass, or even when encroached upon by weeds. They care for themselves.



Delphinium Perennial, tall, handsome plants blooming for several months. Flowers mostly shades of blue. Mixed. D. Cardinale, scarlet. D. Nudicaule, scarlet. All sorts mixed.

Dianthus Deltoides, the Baby Pink. The plants become a mat of rich green narrow foliage, smothered with pretty little carmine flowers. Hardy, beautiful.

Dictamnus fraxinella, Flame Flower. A handsome, showy perennial, two feet high, the flowers in big panicles in June. Red, White, Mixed. D. Caucasica, rosy lilac. Seeds of *Dictamnus* mostly lie dormant for a year, and sometimes for two years, before starting.

Digitalis, stately plants from two to four feet high, mostly a single stem. Flowers bell-shaped, drooping, very handsome. They should have a high, dry bed, as the plants suffer from mildew in winter. *Gloxinoides*, Mixed. *Purpurea*, mixed. *Grandiflora lutea*, yellow. Spotted Varieties, Mixed. *Canariensis*, yellow. White, Pink, Dark Red, Pink Branching. All kinds mixed.

Digitalis Gloxinoides has *Gloxinia*-like spotted flowers in long spikes, and the plants are excellent for a border or low hedge. D. *Purpurea* in its many varieties is equally valuable. If kept from ripening seeds the plants will be more lasting, and do better service. All are easily started from seeds, and the plants bloom freely the second season.

Draacocephalum Japonicum, dwarf, blue.

Echinops, Globe Thistle, tall, branching, globe-like clusters, bluish green.

Erinus alpinus, a low-growing edging or border plant. Free-blooming, violet purple.

Eupatorium ageratoides, a showy autumn-blooming native perennial. Flowers in handsome white clusters. Does well in shade. Two feet high, and fine for a bed or border.

Fragaria Indica, a hardy creeper that thrives in dense shade or in sun. Flowers golden yellow, succeeded by rich scarlet strawberry-like fruits that retain their beauty for a long time. The fruits are edible but insipid. Fine for baskets or for a carpet under trees.

Francoa glabrata, Maiden's Wreath. Lovely white flowers in spikes.

Gaillardia grandiflora, an ever-blooming hardy perennial, good for beds. The flowers are large, showy, on long stems, and good for cutting. Bicolor *Sanguinea*, crimson. *Nendorfer*. *Grandiflora* Mixed Compact Mixed. All sorts mixed.

Galega officinalis, Goat's Rue, handsome blue flowers, good for cutting.

Gentiana cruciata, a fine Gentian, blue.

Geum, handsome perennials growing two feet high and bearing showy crimson and scarlet flowers. *Atrosanguineum*, large, double, crimson flowers. Mrs. Bradshaw, new, the flowers large, rich scarlet, freely produced throughout the season.

Gypsophila paniculata, a very beautiful plant two feet high branching freely into fairy-like stems bearing a profusion of small white flowers. Exquisite for bouquets, having a harmonizing effect. *Compacta Double*, *Paniculata*. All sorts mixed.

Helenium, two feet high, free-blooming in autumn. Autumnale, golden flowers. *Riverton*. Beauty brown and gold. Mixed.

Helianthemum mutabile, Rock Rose, very pretty flowers in abundance. Mixed.

Helioopsis lævis, 3 ft., rich golden flowers in summer and autumn. A good rather coarse perennial.

Hemerocallis aurantiaca, golden Lily-like flowers, blooming for a long time. Splendid.

Heuchera sanguinea, hybrids, fine. Mixed.

Heracleum Mantegazzianum, a huge umbelliferous plant, eight feet high. It branches and bears freely at the tip of each branch a huge flat umbel of white flowers. Leaves deeply cut, often five feet long and three feet across. Good for the background.

Hollyhock. *Chaters*, Mixed. Double English. Flesh, White with violet centre, Rose, Rose-neyron red, Carmine, *Crimson*, Purplish-violet, Cherry-red, Rich scarlet, Rose fringed. Special Mixture. *Alleghany* fringed Single, fine large flowers, many colors. Large pkts. Mxd



Hibiscus Crimson-eye, mixed. See Annuals. (28)

Iberis Gibraltaria, a foot high, the flowers in big tufts of various light colors. Mixed.

Inula Helenium, Elecampane, three feet, the leaves large, radical, and the flowers golden yellow with narrow guard petals.

Iris Germanica, a foot high, the large, delicate-textured flowers blooming abundantly in May. Mixed colors. Japonica, Japanese Iris, the flowers large, single and double, of many rich colors and variegations. Punnilla, 8 inches high, mixed.

Isatis glauca, three feet tall, the foliage silvery, and the profusion of small flowers lovely yellow. Splendid. Easily grown.

Lathyrus, Perennial Pea, mixed colors.

Lavandula vera, true. L. Spica, prized for both foliage and flower. A foot high.

Leucanthemum, Shasta Daisy, Alaska, white, showy in the garden, and fine for cutting. Westralia dwarf. California, cream. The Speaker, new, very large, fine, white. Special Mixture of all.

Linaria Macedonica, two feet high, bears Snapdragon-like golden flowers in wreaths.

Linum perenne, rose.

Lobelia Sphilitica, 2 ft., rich blue, splendid.

Lupinus, beautiful and attractive perennials, flowers rich colored, in long spikes. Arboreus: Snow Queen, white, Yellow. Polyphylus: White, Rose, Excelsior, Mixed. Douglassi, Mixed.

Lychnis Viscaria splendens rosea, 1 ft., rose.

Lythrum salicarium, two feet, branching, every branch a wreath of lovely rosy-purple flowers.

Malva Moschata, 1 foot, showy. Mixed.

Matricaria Capensis fl. pl., double, pure white, profuse blooming. Golden Ball, plants a foot high, smothered with double golden flowers. Beautiful. Mixed.

Monarda fistulosa, three feet, large heads of mlnt-flowers of various colors.

Oenothera Lamarckiana, 3 feet. Biennial. Large yellow flowers, during summer. Young! 1 ft., golden yellow flowers in big clusters. Perennial, entirely hardy. Makes a fine bed.

Orobus Vernus, a charming, spring-blooming border plant. Flowers purplish-blue.

Pæonia tenuifolia, scarlet, earliest Pæony. Officialna, crimson, earlier than Chinesis. Chinesis mixed. Seeds lie dormant for 2 years before germinating.

Pardanthus Chinesis, the Blackberry

Lily. A beautiful hardy perennial two feet high, the flowers orange, spotted brown, freely produced. The blooming period is prolonged for several weeks, then appear the seed-pods, which mature into clusters resembling a ripe Blackberry. The foliage is sword-shaped, and the flowers are not unlike a small Lily. From these characteristics the name of Blackberry Lily is derived. Once established the plants will take care of themselves, and thrive and bloom in sun or shade.

Pea, Perennial, Rose, Red, etc., Mixed.

Phlox, Perennial, Mixed. Seeds do not germinate well, and will often lie dormant for more than a year. Should be sown in fall.

Phytolacca decandra, Poke-berry. Grows five or six feet high, forking into tree-form. The stalks are shining crimson, the flowers white in long, drooping racemes, succeeded by large, dark red berries. The young shoots are in spring cooked and dressed as Asparagus, and the juice of the berries may be used as red ink. In France it is used to color wine.

Picotee Pink, French, imported, a ft. high, bearing large, double Carnations of various colors. Mixed.

Pinks, Carnations and Picotees mixed, including many fine varieties.

Platycodon, plants grow two feet high, bearing large blue and white Campanula-like flowers in autumn. Hardy, and a first-class perennial. All colors mixed.

Polemonium, Jacob's Ladder. Pretty foliage and small flowers in tall spikes. Blue White, Mxd.

Polygonum cuspidatum, a huge hardy, spreading herbaceous perennial eight feet high, bearing a profusion of white, upright, axillary spikes of bloom in fall.

Potentilla formosa, a foot high, the flowers brick-red with black eye. Pretty. Also mixed.

Primrose, Hardy in great variety, including Acaulis, Denticulata, Veris Elatior, Vulgaris, Polyanthus, Verticillata, etc. In mixture. Also Primula officinalis yellow, drooping clusters, fine for edgings.

POPPY, PERENNIAL.

The Oriental Perennial Poppies are three feet high, the foliage radicle, fern-like, and the gigantic flowers borne at the summit of tall, strong stems. Blooms in June, after which the seeds mature and the whole plant disappears until the next spring.

Colors mostly scarlet and shades of red. Victoria, salmon. Grand Mogul, red. Lilliput, small. Semi-plena, red. Tom Thumb, Princess Victoria Louise, salmon. Special Mixture of all sorts. Nudicaule of Iceland. Mixture.

Pueraria Thunbergiana, Kudzu Vine, very rapid-growing herbaceous vine, growing 50 feet in a season. Bean-like foliage and clusters of purple Pea-like flowers. Protect at the north till plants acquire some age.

Pyrethrum, single, mixed.

Ranunculus Asiaticus, superbissimus, lovely double flowers of many rich colors.

Rocket, Sweet, a beautiful, hardy, Phlox-like perennial blooming in early summer. The plants grow three feet high, becoming clumps of many leafy stalks, each surmounted by a large panicle of deliciously fragrant flowers. The plants are lasting, showy, and very handsome. Purple, White, Mixed.

Rudbeckia Sullivanti, two feet high, a bed becoming a mass of rich orange-colored flowers, lasting for weeks and very attractive.

Rudbeckia Purpurea, a beautiful, vigorous perennial, five feet high, blooming freely for many weeks. Flowers large, Sunflower-like, showy purple with prominent bronze-gold centre. Fine to plant among shrubbery. Blooms throughout autumn, and the plants stood out into big clumps. Very fine.

Salvia Prætenis, blue, summer-blooming.

Saponaria ocymoides, rose clusters.

Scilla campanulata, racemes of blue flowers.

Silphium Perfoliatum, 8 feet high, a plant soon forming a huge clump, becoming a waving mass of snowy yellow flowers in autumn. Splendid for a background. Silphium laciniatum, Compass Plant, deeply cut leaves and yellow bloom.

Solidago, Golden Rod, elegant flowers of golden bloom in autumn.

Stokesia Cyanea hybrida, 2 ft. high, bearing exquisite Aster-like flowers of various colors. A choice hardy native perennial.

Sweet William, Improved. Beautiful and showy perennials a foot high, rich sweet-scented flowers in big clusters make a gorgeous bed. A really good perennial. To promote the life of the plants avoid seedling. Single: Holborn Glory, Atroungulicous, Harlequin, splendid. Giant Auricula-eyed, fine. Pink Beauty. Scarlet Beauty. Copper-red, fine. Double: Albus, Nigricus, Roseus. Special Mixture Complete Special Mixture, all sorts.

Trachelium, Throatwort, showy, branching hardy biennial. Flowers small, in profusion 18 inches high. Blue White, Mixed.

Tradescantia Virginica, 18 inches high, narrow foliage, and clusters of exquisite blue flowers all the season.

Trifolium repens folis purpureus, the true Irish Shamrock, with white flowers.

Tritoma, many varieties mixed.

Trollius, Globe Flower, many kinds mixed.

Tulip, choice mixed.

Tunica saxifraga, tufted little plants, the foliage dense, dark green forming a carpet of green, from which the slender stems push up six inches, bearing delicate little rosy white flowers in profusion. Fine for an edging, blooms all season.

Verbascum, Mullein, elegant stately plants, mostly biennials. Olympicum, silvery rosettes or foliage, flower stalk candelabra-like, five feet high, bearing golden flowers. Phœnicum hybrids, mixed. Blatariæ, Yellow, White, Mixed. Special Mixture all sorts.

Vernonia Novaboracensis, tall strong plants, five feet high, each forming a clump clothed with pretty drooping foliage, and crowned with clusters of brush-like rosy-purple flowers. Hardy and handsome.

Veronica mixed, spikes of pretty white and blue flowers, each with two stamens.

Viola odorata, single, mixed colors. The seeds of Viola odorata often lie dormant for a year.

Wahlenbergia, Blue, White, Mixed.

Wall Flower, double and single. Fragrant flowers of much beauty, very popular in England. Single: Vulcan, blood-red. Primrose, sulphur-yellow. Harbinger, brilliant brown, Non-plus-ultra, rich mixture. Single mixed. Double mixed. Complete Mixture, all sorts.



FOR THE WINDOW GARDEN.

The seeds offered here are suitable for pot-plants at the North, and out-door plants at the South. They should be sown in a box or sheltered bed, and potted when large enough.

Abrus precatorius, Prayer Bean. A good vine at the South. Soak the seeds for several days in tepid water before planting.

Abutilon, known as Flowering Maple. A branching shrub bearing large bell-shaped flowers on long stems, the colors from white to golden yellow and crimson. Lovely everblooming pot-plants blooming freely in summer or winter. Mixed colors.

Acacia, elegant pot plants with delicate compound foliage of great beauty, and little globular clusters of bloom. *Lophantha*, *Lophantha speciosa compacta*, *Dealbata*, *Tampara*. Mixed. Soak the seeds and soak for a day or two in tepid water before sowing.

Aistræmeria Chilensis, attractive Lily-like flowers.

Angelonia grandiflora, a pretty pot-plant, the flowers white and lilac, free-blooming and fragrant. Mixed colors.

Anomatheca cruenta, (Scarlet Freesia) red.

Antigonon leptopus, a beautiful herbaceous vine, growing 20 feet, with showy clusters of rosy carmine flowers. It can be bedded out, and the hard tuberous roots lifted, potted and kept in a frost-proof room over winter.

Asparagus, elegant foliage plants, the filmy leaves mostly dark green borne upon slender stems. Plumosus nanus, Robustus, Superbus, Sprengeri, Special Mixture, all sorts. Soak the seeds for a week in tepid water before sowing. Sow in sandy soil and water sparingly until growth begins.

Begonia, Erfordia, carmine rose. Gracilis: Fireball—brilliant crimson. Prima-donna—new, limpid rose slading to crimson. Semperflorens atropurpurea maxima, bronze foliage, blood-scarlet flowers, winter-blooming. Nana compacta Fire-red. Complete Mixture. These are all fibrous rooted, everblooming varieties that do well as window pot-plants.

Boston Smilax, a pretty vine for a pot trellis, the delicate sprays of shining foliage decorative on the plants, and useful for cutting. Myrtifolia, new, small-leaved.

Calceolaria, Large-flowered Hybrids, Tall sorts mixed. Also Dwarf sorts mixed. Rugosa mixed.

Carnation, Winter-blooming, mixed.

Chrysanthemum, Japonica, perennial, mixed.

Cineraria Hybrida, Large-flowered, mixed.

Cianthus puniceus, vine, scarlet flowers.

Colerus, bright and handsome foliage plants, the colors yellow, red, pink, white, chocolate and green pleasingly contrasted. Mixed.

Convolvulus Cupanians, Mauritanicus, Aureus superbus etc. Mixed.

Cryptospermum Calendulaceum, golden, tender.

Cuphea Miniata, various colors. Mixed.

Cyclamen, various colors. Mixed.

Cyperus alternifolius, Umbrella Plant, a neat aquatic foliage plant for pots or ponds.

Dolichos Lignosus, a fine ornamental window vine for suspended baskets. Flowers white. Tuberous. climber with beautiful violet flowers.

Eucalyptus citriodora, shrub or tree for pots at the North or planting out at the South, fragrant foliage. E. Globulus silvery foliage, fine. Resinifera, Gunnii. Mixed.

Eupatorium riparium, a lovely sure-blooming pot plant for winter, the flowers brush-like, white, in clusters, good for cutting. Gradiflorous albus, white.

Freesia Leichtlinii, lovely tubular fragrant flowers. Refracta alba, similar. Both mixed.

Geranium Zonale, Mixed.

Gloxinia, large-flowered, summer-blooming, tuberous plants, finest strain. Mixed colors.

Heliotrope, Large-flowered, very fragrant, in big clusters. Finest mixed.

Hibiscus, tender sorts, large flowers. Mixed.

Impatiens, free-blooming, pretty. Mixed.

Keiskearth Ivy, charming basket plant.

Kenilwort, Pea-like flowers. Mixed.

Lantana, various colors. Mixed.

Mandevilla, white, fragrant, climber.

Melanthus major, six feet, pretty foliage.

Mimosa pudica, globular rosy clusters.

Musa religiosa, starts tardily.

Nerium, Oleander, pretty white and pink flowers. Rich green evergreen foliage. Likes sandy soil and sunshine.

Nymphaea Zanzibariensis, azure blue, fine.

Palms, various kinds in mixture.

Passiflora cærulea, blue, vine.

Phaseolus ensiformis gigas, Giant Bean.

Physanthus albens, vine, white, fragrant bloom.

Rothsarth Lily, showy, yellow flowers.

Psidium, Guava, common. P. Gateleyana.

Primula Chinese, excellent winter-blooming pot plants of easy culture. French Giant varieties. Mallo-leaved Mixed. Fern-leaved, Mixed. Choice Fringed, Mixed. Double sorts, Mixed. Stellata, Mixed. Obconica-grandiflora, Mixed. Malacoides, lilac. Floribunda, yellow. Kewensis, yellow. Farinosa, Forbesi.

Rivinia humilis, a pretty, easily-grown plant for window decoration in winter. Its beauty is in the racemes of rich scarlet berries freely produced.

Sollya heterophylla, blue creeper.

Solanum Lobeli, a lovely window plant bearing showy scarlet fruits. Excellent. Texanum, bears egg-shaped bright scarlet fruits. Solanum mixed, various kinds.

Stelia paniculata, pretty white flowers in clusters. S. serrata, similar. The flowers are fine for cutting. Both winter-blooming in pots.

Tacsonia Mollissima, fine pink flowers; vine.

Tecoma Smithii, free-blooming pot plant for decoration in winter. Flowers orange.

Torenia Fournieri Grandiflora, a lovely branching pot plant, somewhat globular in form, becoming a mass of exquisite velvety blue flowers. Easily grown from seeds. Nympha, blue. The Bride, white and pink. All sorts Mixed.

Wallflower, Kewensis, new winter-blooming Wallflower. Flowers sulphur, changing to orange or purple-violet, very fragrant and handsome. Start plants in mid-summer, shifting into larger pots as the plants grow.

SEEDS OF HARDY SHRUBS AND TREES.

Seeds of these are mostly a year or more in starting, but the plants raised are free from pests, and vigorous.

Acer Negundo, Box Elder.

Alnus cordifolia, heart-leaved.

Amorpha canescens, dwarf.

Fruticosa, Bastard Indigo.

Ampelopsis sinensis.

Quinquefolia, woodbine.

Vetchi Boston Ivy.

Amygdalis vulgaris.

Aralia spinosa, shrub.

Arbutus Unedo.

Aristolocia siph.

Azalea pontica.

Berberis Aquifolium.

Bealii.

Vulgaris.

Thunbergii.

Bignonia radicans, shrubby vine.

Broussonetia, Paperifera.

Buddleja variabilis.

Buxus sempervirens.

Callicarpa Americana.

Calycanthus floridus.

Præcox, Japan Alspice.

Carpinus Americanus.

Ceanothus Americanus.

Cephalanthus occidentalis.

Cercis Siliquastrum.

Canadensis, Red-bud.

Cladrastis tinctoria.

Coletea arborescens.

Clematis flammula.

Paniculata, hardy. White.

Virginiana, white. Vitalba, white.

Viticella, purple flowers.

Cornus floridus.

Alternifolia. Paniculata.

Stolonifera. Mas.

Crataegus Pyracantha. Oxyacantha.

Cytisus laburnum.

Euonymus Americana.

Genista Andreaana. Tinctoria.

Gleditschia triacanthus.

Gymnocladus Canadensis.

Hamamelis Virginia.

Hibiscus Syriacus, Mixed.

Ilex Aquifolium.

Florida Holly, tree.

Kelcuteria paniculata.

Laurus Camphora.

Ligustrum Ibotum.

Liriodendron tulipifera.

Lonicera, Mixed.

Maclura aurantiaca, Osage Orange,

used for a hedge. Per lb \$2.50, fresh.

Magnolia grandiflora, Conspicua ulan.

Acumlnata. Tripetala.

Morus alba. Nigra, black.

Paulownia Imperialis.

Phlomis fruticosa.

Photinia glaber.

Philadelphus grandiflora large-flowered Mock-orange, the finest. Seeds germinate in two or three weeks.

Pyrus baccata.

Quercus ilicifolia. Suber.

Rhamnus alaternus.

Rhodotyus Kerriodes, a handsome shrub, bearing Blackberry-like flowers throughout the season.

Rhododendron ponticum.

Rhus coriaria.

Lacinated. Cotinus.

Robinia Acacia, Black Locust.

Rosa Multiflora nana. Hlawatna.

Ruscus racemosus.

Salix cuprea.

Sambucus, everbearing.

Racemosa.

Sorbus Aucuparius.

Spartium junceum.

Symphoricarpos Vulgaris.

Ramosa.

Syringa, White Lilac Purple Lilac.

Tilia Argentea, Platyphyllus.

Americanus.

Ungnodia speciosa.

Viburnum opulus. Tinus. Lantana,

Prunifolium.

Wistaria Chinensis.

Yucca filamentosa.

How to Remit.—We guarantee the safe arrival of Seeds, Bulbs and plants, and the safe arrival of the money sent for them; but in remitting please observe these directions: One Dollar or more send by Draft, Money Order or Registered Letter. Smaller sums send in three-cent postage stamps or silver coin in a coin-card or sowed in a piece of split pasteboard.

Address **LAPARK SEED AND PLANT COMPANY,** Successor to Geo. W. Park, LaPark, Lancaster Co., Pa.

Choice Flowering Bulbs, Tubers and Plants.

Amargilly. Aigberth, each \$1.00. Johnsonii, red with white bands, 40 cts. Hallii, 50 cts. Treated 15 cts. each.

Aspidistra lurida variegata, a foliage plant. Variegated 30 cts each. Plain 15 cts. each.

Begonia, tuberous-rooted, Double mixed, Single mixed, 10 cts. each.

Belladonna Lily, rose-colored flowers, 50 cts. each.

Catadium Esculentum, large bulbs 25 cts. each. Variegated-leaved, very tender, mixed, 25 cts. each.

Calla Lily, Large-flowered White, 25c., Elliottana, 50c.

Crimin Powelli, rose and white flowers. One foot high, blooming in summer. Said to be entirely hardy, 50c.

Dahlia, finest named varieties. White, Scarlet, Rose, Crimson, Yellow, Purple, Pink, Variegated, 25 cts. each.

Canna, for beds. Named Varieties. Crimson, Scarlet, Yellow, Variegated. All named varieties. 15 cts. each. \$1.50 per dozen.

Gladiolus, French Hybrids, finest mixed, large bulbs, 5 cts. each, 50 cts per dozen.

Gladiolus Primulinus, rich shades of yellow, flowers somewhat drooping, new, 10 cts. each, \$1.00 per dozen.

Heimerocallis, Day Lily: Fulva, coarse, Orange Scarlet, Flava, Lemon Lily, yellow. Thunbergi, like Flava, but a month later. Aurantiaca, new large-flowered, orange. Dumortieri, a foot high, orange. Kwanso, orange-scarlet, four feet high. These are all hardy plants.

Iris Germanica, mixed. Siberica, mxd. Kämpferi, mxd. Mme. Chereau, tall, white and blue, 15c each, \$1.50 per doz.

Lilium Auratum, the gold-banded Japan Lily, very large flowers, deliciously fragrant, large bulbs 50 cts. each, \$5.00 per dozen. Henryjii, tall, showy, orange-red, 75c each, \$1.50 per doz. Lancifolium, White, Rose, Lancifolium Rubrum, red, 35 cts. each, \$3.50 per dozen. Longiflorum Giganteum, pure white, very fragrant, summer-blooming, 25 cts. each, \$2.50 per dozen. Harrisii, the white, fragrant Easter Lily 25 cts. each, \$2.50 per dozen.

Ocalis rosea, a fine edging or basket plant. 5 cts. each, 50 cts. per dozen.

Paeony, Chinese, mixed varieties, 15 cts. each, \$1.50 per dozen. officinalis, early, red, 20 cts. each. All are hardy.

Tuberose, Double, white, fragrant, 5c each, 50c a doz.

Triclurus hirta, Japanese Toad Lily, 2 feet high, spotted like flowers late in autumn, hardy, 10c ea., \$1.00 a doz.

Choice Seeds of Tropical Fruits.

The following Tropical Fruits may be grown from seeds. Plant out at the south, but grow in pots at the north. They grow, bloom and bear well in pots.

Carica Papaya, the tropical Papawpaw. Large handsome fruit of easy culture, blooms and bears second year.

Citrus Nobilis, Mandarin, small Orange, sweet, very productive.

Eriobotrya Japonica, Japanese Medlar, prized as fruit by some people. Fruit fine for pies or stewing, has a sub-acid taste much like our cherry.

Ficus Carica. Fig, choice, mixed.

Opuntia or Prickly Pear, prolific-bearing Cactus, fruits edible, purple, plants curious, flowers very handsome.

Psidium Guava, large-fruited, is prized for jelly, and for eating.

Pistium Cattleyanum, a smaller fruit in clusters, the dwarf shrub.

Punica granatum, the Pomegranate, very pretty in flower, fine fruit.

Sunberry or Wonderberry, a variety of Solanum Nigrum bearing large black berries in abundant clusters. Used for pies, preserves, etc.

Popular Mixtures of Flower Seeds.

Mixture of Annuals. Contains chiefly seeds of flowers blooming the first season, many kinds. Price 10c.

Mixture of Biennials and Perennials. Contains seeds of many species and varieties. Price 10 cts.

Mixture for Window Garden. Contains seeds of many varieties of window plants. Price 10 cts.

Mixture of Climbers. Contains seeds of a dozen different genera, many varieties. Price 10 cts.

Mixture of Everlastings and Grasses. Leading sorts for drying for winter bouquets. Price 10 cts.

Mixture of Fragrant Flowers. Contains many kinds of our most fragrant flowers. Price 10 cts.

Mixture of Edging Plants. Contains seeds of many species and varieties. Price 10 cts.

Mixture of Flowering Shrubs and Trees. Excellent for a moonlight display. Also suitable for graves. Price 10 cts.

Mixture of Shrubs and Trees. Embraces a hundred of the best varieties. All hardy and useful for ornament and shade. Price 10 cts.

Surprise Package. Contains seeds of a great many varieties, old and new. Very interesting. Price 10 cts. Three packets, any mixture, 25 cents.

SEEDS OF MISCELLANEOUS FLOWERS.

Antirrhinum, Aurora, semi-dwarf, new; Cinnabar—scarlet with distinct white throat. Effective in beds or pots.

Antirrhinum, Crimson King, semi-dwarf, a deep, rich crimson-scarlet

Antirrhinum, Golden Beauty, yellow, large, fine.

Burdock (Lappa Major). A weed in many places, valued for the medical properties of its seeds and roots. The pretty blooming burrs are used by children to make baskets and ornaments.

Cajanus Indicus, eight feet high, with Pea-like red-spotted flowers. Pretty pinnate foliage.

Caterpillars and Snails, annuals with caterpillar-like seed-vessels, some snail-like. Mixed.

Celsia Arcturus, 4 feet high, a handsome pot plant with yellow flowers.

Chinese Cabbage, Pe-tsai, a fine vegetable from China. Somewhat like a Cose Lettuce. Can be used raw or cooked and seasoned. Sow in summer for fall and winter.

Escallonia floribunda, a pot shrub with large flowers in loose clusters. Hardy south.

Eschscholtzia compacta, mixed, fine for a pot or border, free-blooming and beautiful.

Gossypium, Cotton, short staple, the cotton of Commerce. Upland, a kind adapted to high land.

Johnny-jump-up, the old-fashioned small Pansy found growing in old gardens. Mixed.

Lactuca canadensis, a stately biennial growing 15 feet high in rich soil. The plant forms a single stalk, thickly clothed with foliage from the ground up to the big panicle of flowers at the top. A half dozen of these plants grown together makes an attractive group.

Lunaria Maroccana hybrida Excelsior, a very beautiful strain of this lovely Snapdragon-like plant. Colors mxd.

Marigold, African, White strain, lemon and orange.

Golden Gem, a beautiful globular plant a foot high, having fragrant, fern-like foliage and small golden flowers that literally cover the plant during autumn.

Marigold, New French, large flowers, golden yellow with brown margin, new and beautiful.

Phacelia Campanularia, a very beautiful Phacelia with Campanula-like flowers, rich dark blue, produced throughout summer.

Polygonum Monspellense, a dwarf, graceful grass, long, handsome rosy spikes of bloom.

Rocha falcata, a succulent pot-plant with showy scarlet flowers. Seeds almost like dust. Sow with care.

Shamrock, the true small-leaved sort grown in Ireland. Popular on St. Patrick's Day.

Solanum Dulcanara, a pretty hardy vine, blooming freely in summer, and covered with clusters of rich scarlet berries in the autumn.

Sunberry, a prolific annual bearing clusters of big black berries in autumn. When scalded and the water poured off they are used for pies, etc.

Sylibum ibericum, a handsome annual silvery Thistle-like plant, ornamental foliage.

Symphandra, two feet high, branching, and bearing cream-white bell-flowers. A hardy biennial.

Tithonia speciosa, Mexican Sunflower; orange-red.

Valerianella congesta, a pretty little annual, with clusters of rose flowers.

Veronica sylvatica alba, a charming annual for pots or beds; free-blooming, easily grown.

A Few Words From Mr. Park.

TO MY FRIENDS.—Although I am not in any way connected with the LaPark Seed and Plant Company, I wish to say that to help the new firm to get promptly started I have prepared for them all of the pages of this Guide that are devoted to flowers, writing out original descriptions and hints, as you will observe. I will also say that all of the flower seeds offered were tested under my supervision during the past autumn, and nothing is offered of which there is not a reasonable stock on hand, and nothing offered that did not test, the test of nearly all the varieties ranging from 50 to 100 per cent, mostly about 75 per cent. A few, however, that are expensive and that cannot now be procured for "love nor money" run as low as 20 per cent, but of these larger packets of seed will be given. All the seeds will produce flowers of the finest quality. Many seeds that are worthless will be sold this year by unscrupulous dealers, and I am pleased to refer to the flower seeds here offered, as I feel confident they will please, in quality and vitality, those who buy and plant them.

LaPark, Pa., Feb. 20, 1918.

GEO. W. PARK.

Large-flowered Sweet Peas.

A Superb Mixture of the Best Varieties. Price Per Pound \$1.00,
1-4 Pound 30 cents, Ounce 10 cents.

We take pleasure in offering to our friends a Superb Mixture of the best varieties of Sweet Peas. The seeds are all fresh and the mixture embraces the finest named varieties, in careful proportion. Those who buy and plant of this mixture can depend upon having a fine display, and we challenge comparison with those of any other mixture. Be sure to secure your supply of Sweet Peas from us.



It is hardly necessary to speak in praise of the Sweet Pea as a garden flower. Its merits are well-known. The vines grow from five to seven feet high, and are covered with bloom for many weeks. The flowers are exquisite in form, rich and varied in color, delicate in texture, borne in clusters on long stems, delicious in fragrance, and unsurpassed for cutting, as they last well after being detached from the vine. If you grow but six annuals one of them should be the Sweet Pea.

Culture.—Sow in prepared trenches, covering the seeds one-fourth inch and treading the soil after covering. When the plants have attained the height of three or four inches, fill in the trench until only an inch of the top is seen. When further growth is made fill in again, and thus continue until the trench is full. Then place tobacco stems upon each side of the row, and provide a trellis five or six feet high of chicken-wire, weaving tobacco-stems into the meshes of the wire. The tobacco stems will prevent the attack of green lice, which have lately become the bane of the Sweet Pea grower. They will also enrich the soil and promote the growth and bloom of the plants. Sweet Peas should be sown in autumn and protected at the north by a board placed on each side of the row and covered with glass, or else sown early in spring, as early as the ground can be worked. If sown late the vines are liable to a blight which ruins them. Under any condition, however, it is important to obtain good seeds. Address

**LaPark Seed and Plant Company, Successor to Geo. W. Park,
LaPark, Lancaster County, Pa.**

THE BEST FIELD CORN—"SEEK-NO-FURTHER".

Lancaster County, Pa., is famous for its Field Corn, and never before was there a sounder or larger crop of Corn grown upon the LaPark farm than the past year. It is all of the Improved, Selected Seek-no-further variety, a kind that matures early, always cures well, and weighs heavy. The stalks grow from eight to twelve feet high, maturing often two ears, the ears from ten to thirteen inches long, the grains deep and solid. This corn has been grown at LaPark for many years, an effort always being made to improve it, and it is the finest and most prolific Corn to be found in the County. It is truly a Seek-no-further variety, and those who try it will be more than pleased with it. The supply is limited and you should order early. Price per bushel \$5.00, Half-bushel \$2.75, packed and delivered to the express office here. By Parcel Post, per lb. 25 cts., 2 lbs. 45 cts. Peck \$1.50, plus the postage. Your Postmaster can give cost of postage. If he cannot, then add 10 cents per lb for postage and packing. Address

LaPark Seed and Plant Company, Successor to Geo. W. Park, LaPark, Pa.