

Historic, Archive Document

Do not assume content reflects current scientific knowledge, policies, or practices.

2.09

Indexed 1912.



Illustrated and Descriptive Catalogue of

Orange County Nursery and Land Company

AND

Orange County Ornamental Nursery

Extensive Growers of
Fruit, Shade, Street and Ornamental Trees
Shrubs, Palms, Decorative Plants
Roses, Bulbs, Vines and
Eucalyptus



Fullerton,

California

INSTRUCTIONS TO PLANTERS.

Order your trees early. Those who order first will be served first. If you delay your order until late in the season, you may not get what you want.

Deciduous trees should be planted as soon as possible after the leaves have fallen, and the ground can be gotten into good condition.

Open the bundle or box as soon as received and "heel in" in good, moist soil.

In planting, be sure and dig holes deep enough and large enough to admit all the roots without bending or crowding. Fill in around the roots with well pulverized surface soil, packing firmly, except on top.

If the condition of the soil is such as to require the use of water at the time of planting, if the ground cannot be irrigated, the water should be poured into the hole after it is partly filled with earth. Allow the water to soak away, and then fill in with loose earth without packing.

Those who desire further instructions in regard to planting and care of plants, we would recommend to purchase a copy of Prof. E. J. Wickson's book "California Fruits and How to Grow Them." We can furnish this book at \$3.50 per copy.

Those contemplating making purchases will find it to their advantage to see our stock before buying.

Visitors are always welcome.

TERMS AND CONDITIONS.

First—Parties unknown to us must accompany their orders with cash or satisfactory reference.

Second—Special prices will be given on large specified orders.

Third—We pack in the best possible manner, either by covering with tules or in boxes, thus making a saving of one-third in freight charges. A nominal charge, to cover actual cost of packing, will be made.

Fourth—REMITTANCE. Remittances should be sent by check, postoffice order, express money order, or bank draft.

Fifth—In ordering, state whether substitution will be allowed or not. It frequently happens in the latter part of the season that we are out of certain varieties. If not specially requested not to substitute, we reserve the privilege of doing so, when it can be done without disadvantage to the purchaser. In fact, purchasers of stock for a home orchard or home grounds, if not specially conversant with varieties, will do well to leave the entire selection to us, as we will send only such varieties as are suited to the locality.

Sixth—Cut flowers and all kinds of floral work by express. These orders must be accompanied by the cash. We guarantee satisfaction in all our floral work.

Seventh—We all make mistakes. We will cheerfully rectify any that are brought to our notice if complaint is promptly made.

NOTE.—While we exercise the greatest care to have all Trees and Plants true to label, and hold ourselves prepared, on proper proof, to replace any that may prove otherwise, we do not give a warranty, expressed or implied, and in case of error on our part, it is mutually agreed between the purchaser and ourselves that we shall not at any time be responsible for a greater amount than was paid for them.

CATALOG OF

ORANGE COUNTY NURSERY
AND LAND COMPANY

AND

ORANGE & COUNTY
ORNAMENTAL & NURSERY

GROWERS OF

NEW AND STANDARD FRUITS
SHADE AND STREET TREES, SHRUBS
EUCALYPTUS, PALMS
ROSES, ORNAMENTALS, VINES



Fullerton, California

SUNSET PHONE: 15 R

HOME PHONE: 82

THE growing of Eucalyptus timber
== for lumber, railroad ties, manu-
facturing and other purposes is dest-
ined, in the near future, to become one
of the leading industries of California.
As a revenue producer an Eucalyptus
grove will be one of the best assets a
man can own. It will be especially
adapted to parties living at a distance,
as after the first year or two no special
attention is required.

¶ We grow Eucalyptus by the millions,
and are prepared to furnish the plants
in the proper season, or grow them on
contract.

ORANGE COUNTY NURSERY

AND

LAND COMPANY

FULLERTON, - - CALIFORNIA

FRUIT DEPARTMENT

NOTE—Our stock of Fruit Trees is very fine, being well-grown and clean stock. Three hundred or more trees of one variety go at 1000 rate; thirty or more at 100 rate; five or more at 10 rate; less than five of one variety at single rate.

APPLES

The apple will thrive in most parts of California and in many parts yield a really superior product.

In choosing varieties for any given locality the purchaser should be governed by observations on local conditions and varieties doing best in the locality.

Trees as a rule should be headed low in order to shade the trunk of the tree from the sun.

No home orchard is complete without a few well selected apple trees for cooking and dessert purposes.

1 year old—	Each	Per 10	Per 100	Per 1000
5/8 to 3/4 in.,				
4 to 6 ft.....	\$.35	\$3.00	\$20.00	\$180.00
1/2 to 5/8 in.,				
4 to 6 ft.....	.30	2.50	17.50	160.00
3 to 4 ft.....	.25	2.00	15.00

SUMMER VARIETIES

Duchess of Oldenberg. An apple that seems adapted to California climate. Fine for cooking and market.

Early Harvest. This is one of the earliest apples we have and is an old family favorite.

Gravenstein. A beautiful yellow apple, splashed with red. A very popular variety.

Henry Clay. In quality, beauty and vigor excells Yellow Transparent; very early.

Liveland Raspberry. A red medium to large very early apple.

Maiden's Blush. One of the very best apples for home use. Medium size, somewhat flattened, beautiful yellow apple with a distinct red cheek. Good for table, cooking and market.

Red Astrachan. A well known summer apple of decided merit. Medium to large; red; sub-acid flavor. Good for cooking and market.

Red June. Small to medium. An excellent table apple. Deep red and attractive in appearance.

Wilson's Red June. Quality better than Carolina Red June and fruit larger. Ripens just following Red June.

Yellow Transparent. A transparent yellow apple. Good quality.

AUTUMN VARIETIES

Bietingheimer. Very large, red striped, white flesh.

Bismark. Large, red striped, with yellow ground. Very prolific. Good for cooking and table use.

Fall Pippin. Large, green, sub-acid, quality best. Popular where known.

Fameuse (Snow Apple). Medium roundish, deep crimson. Flesh snowy white, tender, melting, juicy, high flavored, sub-acid, delicious.

Jonathan. Fruit medium, roundish; skin yellow, nearly covered with dark or lively red; moderate grower. One of the best apples for home use or market.



Jonathan

WINTER APPLES

Arkansas Beauty. Large, green splashed with red; quality best. Very desirable.

Arkansas Black. Fruit medium to large; fine flavor; beautiful dark color; flesh yellowish; slightly sub-acid; crisp. One of the best cooking apples.

Ben Davis. Fruit medium to large; flesh white. Tree very hardy, a free grower, coming into bearing early, and very productive.

Baldwin. Large, skin yellow in shade, but nearly covered with red and orange in the sun. Flesh yellowish white and an agreeable mild acid and yet high flavor. Tree a fine grower and very productive.

Black Ben Davis. Dark red and better quality than Ben Davis.

Champion. Medium to large red apple; very promising.

Delicious. A fine red apple, much resembling Bellflower in shape; quality best.

Del. Red Winter. Large, dark red; late keeper.

Gano. Form conical, good size and smooth, deep red; very attractive; flesh pale yellow, fine grained, tender, pleasant, mild, sub-acid; is a good shipper and keeper; tree healthy, vigorous and hardy. An annual and prolific bearer.

Grimes' Golden. Medium to large; rich golden yellow; flesh tender, mild, sub-acid. Tree hardy, vigorous; an early and abundant bearer.

King David. Dark red; of medium size and fine quality.

Lawver. Large, dark red, covered with small dots; flesh firm, white, crisp, mild, sub-acid. A beautiful and desirable fruit.

Mammoth Black Twig. Supposed to be seedling of the Wine Sap, but fruit much larger. Tree a fine, upright, spreading grower.

Missouri Pippin. Medium, somewhat flattened; bright red, with numerous gray dots, very handsome, fair quality; an early and abundant bearer.

Northern Spy. Large pale yellow with red stripes; fine quality.

Paragon. Similar to Mam. Black Twig, better and a surer bearer.

Rome Beauty. Large, yellow, shaded with red; tender, juicy, sub-acid. October to February.

Rhode Island Greening. Large, roundish, green or greenish yellow; tender, juicy and rich, rather acid, but high flavored and one of the best for cooking and dessert.

Senator. Brilliant red and fine quality.

Spitzenburgh. (Esopus.) Medium to large; deep red, flesh yellow, crisp, sub-acid, with a spicy and delicious flavor.

Stark. A large apple and strong annual bearer.

Stayman Winesap. One of the very best. Large red striped apple.

Wealthy. An apple of fine appearance and quality; an early and profuse bearer; a good market apple of its season. Ripens here in September. Winter apple North.

Winesap. Medium, dark red, a favorite market variety in the West.

Winter Banana. Large, pale yellow with red on one side. Tender flesh and excellent quality.

White Winter Pearmain. Medium; skin light yellowish green with a brownish cheek. Flesh tender, fine grained, mild, sub-acid, rich, aromatic flavor.

Yellow Bellflower. Large; yellow with a blush in the sun; very tender, juicy, sub-acid; a beautiful and excellent apple.

York Imperial. Medium; white shaded with crimson; flesh firm, crisp, juicy, pleasant, mild, sub-acid.

Yellow Newtown Pippin (Albermarle Pippin). Medium to large, roundish; yellow, very firm, crisp, juicy, with a highly delicious sub-acid flavor. One of the most famous American apples. A very late keeper.

CRAB APPLES

Price same as apples.

Florence. A young and prolific bearer and one of the best crab apples.

Martha. An excellent cooking variety.

Red Siberian. Fruit small, about an inch in diameter; yellow with scarlet cheek; beautiful.

Transcendent. Vigorous, productive.

Leaves out early; medium large; round; yellow, striped with red.

Whitney's Seedling (No. 20). Large; glossy, green striped, splashed with carmine; flesh firm, juicy and flavor very pleasant; ripe latter part of August. Tree a great bearer.

Yellow Siberian. (Golden Beauty.) Large and a beautiful golden yellow color. Tree vigorous.

PEARS

The cultivation of the year extends to all parts of the state and adjacent territory.

Thrives best on a heavy soil and does well in soils containing considerable alkali.

Unlike most fruits, pears should be gathered before fully ripening and placed in a cool, dark place to complete the ripening process.

The pear is extensively grown both commercially and for home use.

	Each	Per 10	Per 100
$\frac{5}{8}$ to $\frac{3}{4}$ in., 4 to 6 ft...	\$.35	\$3.00	\$25.00
$\frac{1}{2}$ to $\frac{5}{8}$ in., 4 to 6 ft...	.30	2.50	20.00
3 to 4 ft.....	.25	2.00	18.00

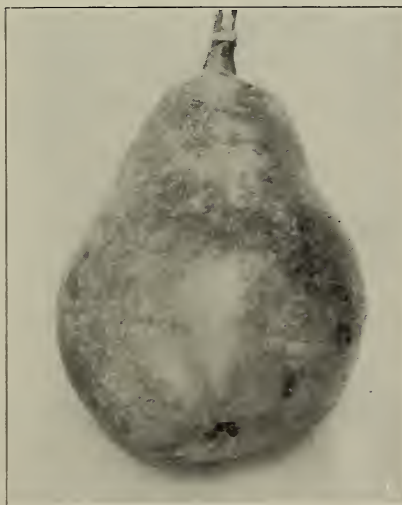
Winter Bartlett 5c extra.

VARIETIES OF THE PEAR

Bartlett. Large; buttery, juicy, high flavored; great bearer. One of the most popular of all the Summer varieties. August to September.

Clapp's Favorite. Fruit large; skin thin, pale yellow; flesh white, fine grained, juicy, buttery, melting, rich, sweet, vinous; a little perfumed; very good. Ripens two weeks earlier than Bartlett.

Duchess d'Angouleme. Very large; greenish-yellow; sometimes a little russeted; makes a beautiful tree. One of the best.



Bartlett

Flemish Beauty. Hardy and bears early and abundantly; fruit large, pale yellow, becoming reddish-brown at maturity on the sunny side.

Kieffer Hybrid. Called by many the "Queen of Pears." Fruit large to very large; skin yellow, with a brilliant vermilion cheek; flesh brittle, very juicy, with a marked musky aroma. Tree very vigorous and very prolific.

Seckle. Of exquisite flavor; perhaps the standard of quality in pears. Tree a stout, slow grower. August.

Winter Bartlett. Fruit large, closely resembling the Bartlett in shape and appearance; perfectly smooth; flesh tender, juicy and melting; flavor similar to the Winter Nellis, but season a little later, and as good as can be desired. In every way a grand pear.

Winter Nellis. Tree hardy and thrifty; a very delicious winter pear of medium size; flesh yellowish-white, fine grained, buttery and very melting, abounding with juice and a rich, aromatic flavor; good to very good. December to February.

Alligator Pear. (*Persea gratissima*.) Is a native of the American tropics. Is but slightly grown in the United States. Usually a taste for the fruit has to be acquired. When a taste is once acquired people often become excessively fond of it. Fruits vary in size from 1½ to 5 inches in length. In color the fruit ranges from green to purple. Trees grow from 25 to 30 feet in height and besides producing fruit, makes a very desirable ornamental tree.

2 to 3 ft.....\$1.00 each

QUINCES

	Each	Per 10
⅝ to ¾ in., 4 to 5 ft.....	\$.35	\$3.00
½ to ⅝ in., 3 to 4 ft.....	.25	2.00

Golden. Fine large yellow.

Apple or Orange. Large and very choice.

CHERRIES

	Each	Per 10
⅝ to ¾ in., 4 to 6 ft.....	\$.35	\$3.00
½ to ⅝ in., 3 to 4 ft.....	.25	2.00

plish black; juicy, thick, juicy, very rich and delicious; tree a remarkably vigorous grower and abundant bearer. June.

Early Richmond. (Kentish, Virginian or Early May.) Medium size; red; melting, juicy, sprightly, acid flavor.

English Morello. Medium to large; blackish red; acid; juicy. Very productive. July.

Bigarreau Napoleon. (Royal Ann.) Very large; pale yellow, becoming amber in the shade, dotted and spotted with deep red and dark crimson; flesh very firm, juicy and sweet; an enormous bearer. June.

Black Tartarian. Very large; bright pur-

APRICOTS

The culture of this fruit is one of the most profitable industries in California. The climate being so well adapted to its growth, and the demand so great, it is now in the front rank of profitable paying fruits. We offer the following varieties, being the best for market, canning and drying.

	Each	Per 10	Per 100
⅝ to ¾ in., 4 to 6 ft.....	\$.35	\$3.00	\$25.00
½ to ⅝ in., 4 to 6 ft.....	.35	2.75	22.50
3 to 4 ft.....	.25	2.25	20.00

Blenheim or Shipley. Large, oval; skin orange, with deep yellow; flesh full to the pit, yellow, rich and juicy; ripens evenly; tree a vigorous grower, a regular and prolific bearer; profitable for canning and drying.

Newcastle Early. Medium in size, golden

yellow, with brilliant red cheek in the sun; freestone; sweet and rich; tree a regular, heavy bearer.

Moorpark. Large, roundish; skin orange, with red cheek in the sun, marked with numerous dark specks and dots; flesh firm, bright orange, parting freely from the stone; juicy, with a rich and luscious flavor; fruit good for canning and drying, but bears irregularly.

Royal. A French variety; above medium, roundish oval, slightly compressed; skin dull yellow, with orange cheek; flesh pale orange, firm and juicy, with a rich vinous flavor; fruit ripens evenly and bears regularly; a favorite sort for canning and drying.

Tilton Apricot. New; fruit large size; rich apricot color, with flavor of the highest quality.

PEACHES

The Peach is one of the fruits that has made California famous as a fruit producing state.

The large, fine and luscious peaches grown in California are enough to make any one enthusiastic over fruit culture. The trees do best on a well drained, sandy loam, rather than on land inclined to be moist. Twenty-four feet apart is a good average distance to set peach trees. When too many fruits have set, the only remedy is to thin them out. Thinning is done before the pit has formed.

1 Year Old—	Each	Per 10	Per 100
$\frac{5}{8}$ to $\frac{3}{4}$ in., 4 to 6 ft.....	\$.35	\$3.00	\$20.00
$\frac{1}{2}$ to $\frac{5}{8}$ in., 4 to 6 ft.....	.30	2.75	18.00
3 to 4 ft.....	.25	2.00

FREESTONE VARIETIES

Alexander. Large size, handsome and regular in form, with deep maroon shade; adheres to the stone. White flesh.

Australian Saucer. Fruit rather small and very flat; skin a pale greenish white. Is of good quality when allowed to hang on the tree till fully ripe.

Brigg's Red May. Medium size, very highly colored; flesh greenish white, very juicy, vinous, and of very good quality; adheres somewhat to the stone; of firm texture; tree very prolific.

Champion. Very large peach; highly flavored and beautifully colored; flesh white and skin white with red cheek; small pit and thick flesh. One of the best peaches.

Crawford's Early. This beautiful yellow peach is highly esteemed for market purposes. Fruit very large, oblong, skin yellow, with fine red cheek; flesh yellow, juicy, sweet and excellent; free.

Crawford's Late. Fruit of the largest size; yellow, with dull red cheek; free.

Dwarf Japan Blood. Tree of dwarf habit, surest bearer of all the early peaches; fruit is large, pointed, red cheek and end, and sometimes blood red; earliest.

Elberta. Very large, well colored; all things considered, the finest yellow freestone in cultivation; no one can go amiss by planting it.

Early Imperial. A California variety; very large, roundish, oblong; skin greenish yellow, red blush; flesh white, juicy, and of excellent flavor.

Early St. John. One of the best yellow early peaches. Comes in between the first earlies and the Early Crawford.

George the Fourth. Large, flesh white, red cheek; productive; a good free-stone.

Honey. The sweetest of all peaches we have, and about the best bearer. Late frosts have never killed the young fruit in Southern California.

Lovell. A California seedling, large, almost perfectly round; flesh yellow to the pit, firm and of excellent quality; a superb canning and drying peach and more in demand by the canners in recent years, and commanding a much higher price than any other variety of freestone peach. Worthy of extensive cultivation; ripens a few days after Muir.

Mayflower. A new variety from North Carolina; very highly recommended by the originator; one week earlier than Sneed; fruit round and entirely covered with red; blooms late; very hardy; not fruited as yet with us.

Muir. Large; skin yellow. Flesh firm; good drying and canning peach; freestone.

Salway. Fruit large; yellow, with red cheek; flesh yellow; a late showy market sort; freestone.

Strawberry Peach. A fair sized white peach, changing to red near the pit. Has a rich, delicious flavor.

Stump the World. Very large; roundish; skin white, with a bright red cheek; flesh white; freestone.

Susquehanna. One of the handsomest peaches; large; yellow flesh; rich and good; freestone.

Wonderful. Color rich yellow; flesh yellow, highly flavored, firm.

Wheatland. Large, roundish; skin golden yellow, shaded with crimson on the sunny side; flesh yellow and of fine quality; tree vigorous.

Sabechi Late. Latest freestone.

CLING-STONE PEACHES

Cling-stone peaches are much sought after by canners on account of their richness and firmness. Higher prices are realized for cling-stone than for free-stone peaches.

Chinese Cling. Most popular Southern peach; oblong; creamy skin, with faint flashes of red.

Henrietta (Levy). Magnificent yellow cling; large size. Mostly covered with bright crimson; hardy; productive. Late.

Heath Cling. Large; oblong; creamy white, slightly tinged with red in the sun; very tender, juicy, melting; very rich and luscious.

Indian Cling. A large peach, very much sought after by the housewife for canning and spicing.

Lemon Cling. Large; oblong, having a swollen point, similar to a lemon; skin yellow with red cheek. Flesh yellow, firm, juicy and sweet.

Orange Cling. A large, handsome yellow peach with a dark red cheek. Quality excellent and is a favorite with the canners.

Phillip's Cling. Fine, large, yellow; flesh firm, clear, yellow to the pit, which is very small. Preferred by canners to any other variety of cling; its firmness, fine texture of flesh and lateness, not ripening until September, when other clings are practically harvested, makes a demand for this variety far beyond the supply.

Tuscan Cling. A very large yellow cling; the earliest fine cling; flesh juicy and of fine flavor and clear yellow to the stone. A good shipping and canning peach and very desirable on account of its earliness, ripening with the Early Crawford.

NECTARINES

The Nectarine is a smooth-skinned peach. It is very fine either as a dried fruit or preserved. Requires the same conditions and should be handled the same as the peach.

Boston. Large; deep yellow, with bright blush and mottling of red; sweet and a peculiar pleasant flavor. Freestone.

Stanwick. A large nectarine with white flesh.

New White. Large; pure white; flesh tender, juicy, vinous; very good; early; free.

4 to 6 ft.....35c each

PLUMS

This fruit grows well in all parts of the state.

The Japanese varieties and their crosses occupy a large place in the plum culture of California.

The European varieties are also held in considerable favor, especially for canning purposes.

The American varieties are planted but little.

	Each Per 10 Per 100		
4 to 6 ft.....	\$.35	\$3.00	\$25.00
3 to 4 ft.....	.25	2.25	20.00

VARIETIES

Abundance. Fruit is full, medium size, and of a bright cherry red color; flesh is light yellow, juicy and tender.



Wickson Plum

Blue Damson. Medium; skin dark blue with light blue bloom; flesh yellowish green, juicy, sweet.

Burbank. Japanese, named after the introducer of this and most of the other good plums. The best bearing variety we have. When fully ripe, the fruit is deliciously sweet.

Cherry Plum. A small red plum of the American type.

Hale. Tree good grower; fruit very large, beautifully colored; of best quality.

Imperial Gage. Large; oval, golden green, juicy, rich; first quality.

Kelsey's Japan. Vigorous; greenish yellow; very large; excellent; prolific; sweetest of all plums; early bloomer.

Prunus Simoni. A very fine plum in the interior valleys, where it ripens to perfection.

Satsuma. A very large and well flavored plum with blood-red flesh.

Wickson. Japanese. Tree grows in vase form, sturdy and upright. The fruit is evenly distributed all over the tree. Small stone, the flesh is of fine texture, firm, sugary and delicious.

Yellow Egg. Very large, egg-shaped; excellent for cooking.

French Prune. Medium to small; skin reddish purple with a blue bloom. Flesh fine, juicy, sugary; used very extensively for drying in California.

German Prune. A large, long, oval variety, much esteemed for drying; color dark purple; of very agreeable flavor.

Hungarian. Large; skin violet; very prolific, often growing double; good flavor.

FIGS

There probably is no fruit that repays its owner so well as a few trees of figs. From early summer till late fall there is a constant supply of wholesome, appetizing fruit.

The trees require sufficient moisture to keep them constantly growing during the summer months in order to fruit well.

4 to 6 ft.....	35c each
3 to 4 ft.....	25c each
2 to 3 ft.....	20c each

VARIETIES

Black Mission or California Black. Is probably the most common black fig grown in California. Is of fair size and dark purple, almost black, in color. A good grower and a good bearer.

Black Spanish or Black San Pedro. Not so dark in color as the Black Mission, but a much larger and better fig, in fact we consider it the best black fig we have. Tree a good grower and an excellent bearer.

Brown Smyrna. A large and handsome fig deeply shaded with brown and sometimes almost black. Red inside.

Kadota. This is one of the very best of the white figs. Of medium size and but slightly elongated. Thought by some to be identical with the White Pacific, which it very much resembles. Very sweet and delicious. White inside and out.

White Pacific. Similar if not identical with above variety. It is very much prized for home use and for selling fresh on the market. Same description as Kadota.

White Adriatic. This is one of the most common sorts grown in Southern California. It is rather above medium size with greenish white skin and pink flesh. Is productive.

LOQUATS

This is a fine evergreen tree that is useful as well as ornamental. The fruit is yellow to orange in color and the size of large plums but somewhat longer. It is a very desirable fruit especially the budded varieties, coming as it does in the late winter and early spring when fruit is scarce. Trees are easily grown and fruit abundantly.

Advance. This one seems the best for

general culture. It is much larger and better than the common seedling and a more abundant bearer. The fruit ripens early and sells readily.

3 to 4 ft.....	\$1.25 each
2 to 3 ft.....	1.00 each

Seedlings. We also have a few seedlings, which until a few years ago were the only thing grown. The seedling trees grow larger than the budded stock and are longer coming into bearing.

4 to 5 ft.....	.75c each
----------------	-----------

JAPANESE PERSIMMONS

This is a valuable acquisition to our fruits. The trees are quite hardy and will thrive where the thermometer does not drop below zero. Is a valuable market fruit.

4 to 5 ft.....	35c each
3 to 4 ft.....	30c each
2 to 3 ft.....	25c each

Hachiya. This is acknowledged to be one of the best. Oblong and somewhat pointed towards the apex. Skin deep orange or red, with dark blotches near the apex.

Hyakume. Very large, skin orange yellow. Fruit ripens early and is edible even before it gets soft. Is not astringent when hard, like the preceding one.

Tsuro-no-ko. Fruit smaller than either of the foregoing. Is very sweet and juicy.

Tena-Nashi. One of the largest. Fruit almost spherical, skin yellow. Is of fine quality and tree is an abundant bearer.

Among (Yemon). Round, flattened, deeply ribbed; dark orange-red; 2½ to 3 inches in diameter; average weight, six ounces; flesh red, very sweet, and sometimes edible while still solid.

GRAPE VINES

The grape is very widely distributed in California and is divided into three distinct classes—the raisin grape, the wine grape and the table or market grape.

Each	\$.10
Per 1075
Per 100	3.00
Per 1000	25.00

Black Hamburg. Large bunches with large, round berries. Acknowledged as standard in quality for foreign table grapes.

Black Mission. This is the grape originally grown by the Mission Fathers. Used both for a table grape and for wine. Berries are of medium size and good quality.

Black Prince. A very desirable table grape. Bunches are large and berries are medium to large with a decided bloom on them.

Cornichon (Black). Bunches large but loose; berries tapering to both ends; is of good quality and desirable for table and market; ripens late.

Flame Tokay. Very extensively planted for table and market. Bunch is large and moderately compact. Berry firm and sweet. Very popular.

Malaga. This variety thrives well under varying conditions. Bunches are very large. Popular as a market grape.

Red Emperor. A late variety of strong growth and a heavy bearer. Berries are large, oblong and covered with bloom. A favorite market variety on account of its lateness and good keeping qualities.

Rose of Peru. This is a well known variety grown extensively for market. Berries round and of large size, almost black.

Thompson's Seedless. Vine is a very rapid grower. It is, as the name indicates, seedless. It is pre-eminently a raisin grape but is also extensively used as a table grape.

White Muscat. Extensively planted throughout the state. The berry is sometimes round and sometimes oblong, large and greenish yellow in color.

Concord. This is the best known and most extensively grown of any of the American varieties. As grown in California the berries are large and dark purple. The bunch is rather loose. Vine a strong grower and an abundant bearer. Highly prized as a table grape, especially by people recently from the East.

OLIVES

3 to 4 feet.....	50c each
------------------	----------

Manzanillo. The queen olive of Spain; large; 1 inch long by 13-16 of an inch thick;

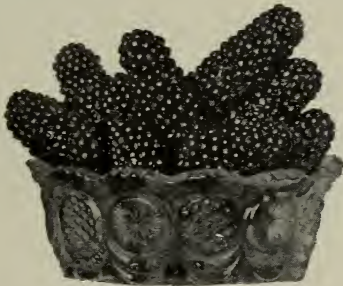
regular, rounded, oval; pit small; ripens earlier than the Mission.

THE SMALL FRUITS

There are few if any sections in California where one or more of the so-called small fruits or berries do not do well. They are especially adapted to the garden on account of the small space occupied and the short time in which fruit can be obtained. With judicious selection and care, a plot of berry vines can be made to produce fruit almost the entire year.

BLACKBERRIES

✓ **Mammoth.** This is in a distinct class by itself. Has more of the distinguishing characteristics of the Loganberry and Phenominal berry than of a Blackberry. Berries are black and very large. It is a profuse bearer and a rank grower. One of the greatest acquisitions in the small fruit line of recent years.



Mammoth Blackberries

Each\$.10
 Per 10 1.00
 Per 100 5.00

✓ **Wilson's Early.** One of the best of the blackberries. A profuse bearer of fine, large berries.

Per 10\$.50
 Per 100\$2.00

DEWBERRIES

Merely a trailing or low bush blackberry.

Per 10\$.50
 Per 100 2.00

Gardena. This is the standard variety for Southern California. It is early, vigorous and a very prolific bearer. Berries are large and of fine quality.

RASPBERRIES

Per 10\$.50
 Per 100\$2.00

California Surprise. This is a decided acquisition, specially for home use. It bears the regular crop in the spring and then about November first begins again and bears for two months.

LOGANBERRIES

Supposed to be a hybrid between the Raspberry and Blackberry. It is a berry that is distinct and entirely different from either of its parents. When fully ripe it is of a very dark red, and a very pleasant acid flavor. Berries very large, often an inch and a quarter long. The vines are rampant growers and produce abundantly. It is a very decided acquisition to the small fruit family.

Each\$.10
 Per 1050
 Per 100 3.00
 Per 1000 25.00

Himalaya Berry. Rapid growing.

Each\$.10
 Per 1075

STRAWBERRIES

Per 10\$.25
 Per 10060
 Per 1000 4.50

✓ **Brandywine.** A handsome dark red berry. Hardy and prolific.

✓ **Sharpless.** An old stand-by; large and of splendid quality.

CURRANTS

Each\$.15
 Per 10 1.00

✓ **Fay's Prolific.** Grows in long bunches and is one of the best of the reds.

✓ **White Grape.** The best white.

GOOSEBERRIES

Each\$.15
 Per 10 1.00

✓ **Oregon Champion.** Medium size and resists mildew.

CITRUS FRUITS

	Each	Per 10	Per 100		Each	Per 10	Per 100
5/8 to 3/4.....	\$1.25	\$12.00	\$100.00	1/2 to 5/8.....	1.00	10.00	90.00

ORANGES

This fruit has come to occupy a very exalted place in the fruit industry of the state and brings into the pockets of growers many million dollars in profits annually. It is planted over a very wide territory extending from San Diego county on the south to Butte on the north.

The Washington Navel. This is the variety that has to a large degree given California its reputation as an orange producing state. In quality and general appearance it has no equal. The tree grows to medium size and is an early and abundant bearer. If a family can have but one orange tree in their garden it should be a Wash-

ington Navel. It is seedless and of large size.

Valencia Late. This variety comes second in importance of our oranges. It is a late variety, ripening after other varieties are off the market and consequently, usually brings very high prices. It seems best adapted to the coast valleys of Southern California, where it reaches a high state of perfection and hangs on the trees till late fall, the last shipments usually going out in early November. Almost seedless, medium to large and of excellent quality.

Dancy Tangerine. This is one of the small, "kid glove" oranges. Is of deep orange color, quite tart and ripens just following the Navel. Desirable for home use and some "fancy" trade, but not extensively planted for market.

GRAPE FRUIT (POMELO)

This fruit is becoming popular, and deservedly so on account of its medicinal properties. It is of lemon color, almost round and larger than a large Navel orange.

Marsh's Seedless. The best and most popular variety. As the name indicates, it has no seeds. It is of very fine flavor, juicy with very little "rag."

LEMONS

Nothing in the way of fruit is more desirable or profitable for the home orchard than one or more Lemon trees. Lemon trees require a warmer situation than orange trees as they are more easily affected by frost.

Eureka. This is the one most commonly grown for market purposes. Fruit is of a good, even size and splendid quality. Tree almost thornless.

TROPICAL FRUITS

Alligator Pear (Persea gratissima). Is a native of the American tropics. Is slightly grown in the United States. Usually a taste for the fruit has to be acquired. When a taste is once acquired people often become excessively fond of it. Fruits vary in size from 1 1/2 to 5 inches in length. In color the fruit ranges from green to purple. Trees grow from 25 to 30 feet in height

and besides producing fruit, makes a very desirable ornamental tree.

2 to 3 ft.....\$1.00 each

Pomegranate. Punica Granatum. A conspicuous shrub. Has bright red flowers all through the summer and in the fall and winter the fruit adds to the beauty of the bush.

2 to 3 ft.....25c each

3 to 4 ft.....35c each

NUT TREES

ALMONDS

	Each Per 10 Per 100		
4 to 6 feet.....	\$.35	\$3.00	\$25.00
3 to 4 feet.....	.25	2.00	20.00

These are quite widely grown in this state and are of considerable commercial importance. They bloom early and are therefore subject to injury by late frosts. They prove a success only in certain localities. In sections where conditions are favorable to the Almond they have proven very profitable.

I. X. L. One of the best of the California Seedlings. Nuts are large and part readily from the hull. Tree a strong grower and a good bearer.

Ne Plus Ultra. Tree thrifty and nuts large, long and soft shelled. One of the most desirable.

Nonpariel. An extra heavy bearer. Paper shell. Tree of a weeping habit.

CHESTNUTS

The Chestnut though not much grown in California does well here and produces fine, large nuts. They are easily gathered and profitable. Chestnut trees also make fine street trees or shade trees for the yard, forming a symmetrical head of great beauty.

3 to 4 feet.....	50c each
------------------	----------

Spanish. Fine, large and prolific.

PECAN NUT

This nut has been comparatively little grown in California and the best locations for its growth are not yet well defined. It grows naturally in a deep, rich soil where the roots can reach perpetual moisture.

Seedlings. 2 to 3 feet, 35c.

ENGLISH WALNUTS

This is the great commercial nut of Southern California and many orchards are also producing paying crops in the central and northern parts of the state. Large plantings are also being made in Oregon and Washington. The class of nuts known as Soft Shells is the one universally planted at the present time. The trees are very vigorous growers and should be planted about 50 feet apart each way to guard against crowding. A deep, rich soil is best adapted to the walnut, a heavy clay subsoil not being suited to its best development.

Much attention has been given in recent years to the grafting and budding of the walnut. Budded or grafted trees yield a nut of more uniform grade as well as larger than the ordinary seedling that was formerly grown.

Placencia Perfection:—Budded. This is selected from the Santa Barbara soft shell class. Nut is very smooth, somewhat elongated, with a thin but strong shell. A very desirable variety.

4 to 6 feet.....	60c each
6 to 8 feet.....	80c each

Santa Barbara Soft Shell Seedlings. Trees of this variety are grown from selected nuts from the best trees. Most of the bearing orchards of Southern California are of this variety.

3 to 4 feet.....	20c each
4 to 6 feet.....	30c each
6 to 8 feet.....	40c each

Franquette. Large, elongated with shell rather thick and kernel of high quality. It is a late bloomer.

4 to 6 feet.....	60c each
------------------	----------

California grown trees are best for California conditions.

Did you ever notice the difference in the root system of California grown trees and eastern grown trees? Different? Quite different! Then plant California grown roots and get the best results.

ORANGE COUNTY ORNAMENTAL NURSERIES

T. D. ROBERTSON, Proprietor

FULLERTON, - CALIFORNIA

TELEPHONES: Home 82; Sunset 15R
Residence: 185R

TO PATRONS: As the Orange County Nursery and Land Company and the Orange County Ornamental Nurseries are two separate concerns, operated under different management, when ordering Ornamentals, time and other delays will be saved by ordering direct to the Orange County Ornamental Nurseries.

ORNAMENTAL DEPARTMENT DECIDUOUS TREES

No garden or landscape is complete without deciduous trees. Their proper spacing and arrangement should constitute the basis upon which all other planting is to be done.

Acer Dasycarpum. White or Silver Maple. One of the common maples of the East. Is a rapid growing tree and thrives in California.

4 to 6 feet.....25c each

Catalpa Speciosa. White Ash. A tall feet. A very hardy and desirable shade and ornamental tree. Very valuable for post timber.

4 to 6 feet.....25c each

Fraxinus Americana. White Ash. A tall tree; 100 to 120 feet. Fine as an avenue tree where a deciduous tree is desired. The ash produces a manufacturing lumber of a very high grade.

4 to 6 feet.....25c each

Melia Azedarach. Umbrella Tree. One of the best of all deciduous shade trees. It is a rapid growing tree with a very dense umbrella-shaped top.

3 to 4 feet.....35c each
4 to 6 feet.....50c each

Populus Deltoides, Variety Carolinensis. Carolina Poplar. One of the best of the poplar trees. Has an upright, shapely growth, and where a rapidly growing tree is wanted, especially for country roadway planting, it is very desirable.

8 to 10 feet.....25c each

Populus Nigra, Variety Italica. Lombardy Poplar. This is the upright growing poplar so commonly seen. Is a strong, upright grower, the branches pointing uniformly upwards. It gives a very striking appearance to country roadways.

8 to 10 feet.....25c each

Ulmus Americana. American White Elm. This is a rapid growing and very graceful tree. Grows to a large size and is suitable for ornamental or street planting.

6 to 8 feet.....25c each

Honey Locust. Resembles and is sometimes called Three Thorned Acacia. Valuable as a street tree, and for fuel and posts.

4 to 6 feet.....25c each

Black Locust. Splendid tree for fuel and posts.

6 to 8 feet.....25c each

EVERGREEN TREES

The evergreens embrace some of the most beautiful trees and shrubs in cultivation. With a variety of climates such as are prevalent on the Pacific Coast, nearly every evergreen tree or shrub can be successfully grown. They are invaluable as screens against objectionable objects, wind-breaks and hedges. The evergreen has made possible some of the most enchanting results in ornamental planting.

THE ACACIA

Acacia Armata. (Kangaroo Thorn.) A very shrubby variety of Acacia; grows 8 to 10 ft. 4-in. pots, 25c.

A. Cultriformis. A shrub with small triangular shaped leaves, which have a decided silvery color. It blooms in great profusion in early spring, producing lemon-yellow flowers. 4 in. pots, 50c.

A. Dealbata. Silver Wattle. A very symmetrical tree with fine foliage of a silver gray cast. A very showy tree especially in the spring when covered with its yellow flowers. 4 in. pots, 25c; gal. cans, 50c.

A. Decurrens. Green Wattle. Flowers are of a whitish yellow. Sometimes mistaken for the preceding variety, as it is also for the Mollossima. Makes a fine tree for ornamental planting. 4 in. pots, 25c; gal. cans, 50c; 5 gal. cans, \$1.00.

A. Floribunda. A rapid growing tree with spreading habits. Somewhat willowy in appearance. Produces great quantities of yellow blossoms. 4 in. pots, 25c; gal. cans, 50c.

A. Longifolia. A very floriferous variety of Acacia; grows 30 ft. high, thrives remarkably well near the ocean. 4 in. pots, 25c.

A. Melanoxydon. The Black Wood of Australia. This is one of the most commonly used in California for street and roadway plantings. It has a symmetrical, upright growth, which makes it very popular for street planting. 4 in. pots, 25c; gal. cans, 50c to \$1.00; 5 gal. cans, \$1.50 to \$2.50.

A. Mollissima. Black Wattle. This is an excellent rapid growing tree of fine feathery foliage. Makes a fine single specimen in an ornamental or park planting. 4 in. pots, 50c.

A. Pycnantha. Golden Wattle. A thrifty small tree with large, broad leaves when young, which gets narrower as the tree grows older. Flowers in heads in axillary racemes. 4 in. pots, 25c; gal. cans, 50c.



Group of Conifers

THE ARAUCARIA

Araucaria Bidwilli. An Australian tree with branches coming out in whorls around the stem. Very fine for parks and lawns. Price, in Jap. tubs, \$2.50 to \$10.00.

A. Excelsa. Norfolk Island Pine. The most common of the Araucarias and one of the most attractive of trees for single specimens for the lawn. By some it is called the star pine on account of the regular manner in which the leaves come out around the stem. \$1.00 per ft.

A. Excelsa Compacta Robusta. In general appearance like the preceding, but with much heavier branches. The branches are broader and the tree has a more robust and compact appearance than the common one. 18 in. high, \$2.50.

A. Excelsa Glauca. This variety is a little more compact than the common excelsa and the foliage has a bluish or glaucous appearance. 18 in. high, in pots, \$2.00.

THE CEDAR

Cedrus Atlantica. 100 to 125 ft. Grows in pyramid form and has a silvery green foliage. A fine tree for park or lawn. 5 in. pots, 50c; balled, \$1.50 to \$5.00.

C. Deodora. (Himalaya Cedar.) A very beautiful tree with silvery foliage and drooping branches. The best of all the cedars and no evergreen can surpass it in beauty. Price, gal. cans, 75c; balled, \$1.50 to \$5.00.

C. Libani. (Cedar of Lebanon.) Branches short and horizontal. A valuable tree. Price, 5 in. pots, 50c; balled, \$1.50 to \$5.00.



Arizona Cypress

THE CYPRESS

Cryptomeria Elegans. A fine tree, growing in pyramid form. Foliage turns golden brown in winter. Price, gal. cans, 50c.

Cupressus Guadalupensis. (Blue Cypress.) A beautiful erect growing cypress with silvery green foliage. Price in gal. cans, 50; balled, \$1.00 to \$5.00.

C. Sempervirens Fastigiata or Italian Pillar Cypress. Forms an erect columnar tree of very striking appearance. Price, 4 in. pots, 25c; balled, \$1.00 to \$5.00.

C. Macrocarpa. (Monterey Cypress.) 60 to 70 ft. with broad, spreading head. The common cypress of California. Much used for hedges and wind brakes. Price, in flats, \$12.00 per 1000; in cans 1 to 2 ft., 10c.

C. Arizona or Arizona Cypress. 40 to 70 ft. Foliage very glaucous and beautiful. Fine for single specimens. Price, gal. cans, 50c; balled, \$1.00 to \$5.00.

THE PINES

Pinus Canariensis. Blue Pine. When young the foliage is of a decided blue color, which it loses as the tree grows older. Leaves are very long, giving the tree a massive appearance. Price, 25c to 50c.

P. Insignis. Monterey Pine. This is a rapid growing pine that is used a great deal for ornamental planting, avenues and wind brakes. The most rapid growing pine we have. Price, qt. cans, 15c; balled, \$1.00 to \$3.00.

P. Maritima. Seaside Pine. The leaves are stiffer, coarser and darker green than the preceding. Price, 3 to 4 ft., 15c.

Sequoia Sempervirens. California Redwood. The great lumber producing tree of California. Attains a height of 400 feet. Makes a tall, graceful tree for ornamental planting. Gal. cans, \$1.00; balled, \$1.50 to \$5.00.

THE EUCALYPTUS

The growing of Eucalyptus for lumber, railroad ties, manufacturing and other purposes is destined, in the near future, to become one of the leading industries of California. As a revenue producer an Eucalyptus grove will be one of the best assets a man can own. It will be especially adapted to parties living at a distance, as after the first year or two no special attention is required.

We grow Eucalyptus by the millions, and are prepared to furnish the plants in the proper season, or grow them on contract.

Eucalyptus Citriodora. (Lemon Scented Gum.) A fast growing tree, usually very straight and slender with branches only at the top. It thrives in a frostless coast region but is not suited to the dry interior. The wood is of a brownish or yellowish tinge; is strong and durable. It is used in Australia for various commercial purposes, such as implement handles, ship building, paving, railway ties, bridge building, inside woodwork in houses and railway coaches.

Its profuse bloom makes it valuable for bee pasture. Is used for ornamental planting on account of the odor of the foliage, which resembles that of a lemon. Price, 2 to 3 ft., 20c; 3 to 4 ft., 25c.

E. Corynocalyx. (Sugar Gum.) This is one of the most commonly grown eucalyptus of California. Grows to a height of 100 ft. and is particularly adapted to the hills of California and the interior valleys where the water supply is not abundant. Naturally it will grow much faster with plenty of moisture, but it will grow in arid situations where many other varieties fail. It will not stand very heavy freezing. It is very durable as railway ties, posts and for other underground situations. The wood warps very little in drying and when dry is very hard. Price, 2 to 3 ft. in cans, 10c; 3 to 4 ft. in cans, 15c; in flats, \$1.50 per 100 or \$12.50 per 1000.

E. Crebra. (Narrow Leafed. Ironbark.) Tall tree, makes fine timber, heavy, hard, elastic and durable. Used for railway ties, fence posts, bridges, etc. Price in cans, 2 to 3 ft., 10c; 3 to 4 ft., 15c.

E. Diversicolor. This is a rapid growing eucalypt, sometimes attaining a height of 400 ft. and a basal diameter of 20 ft. The trunk is usually straight. It thrives in moderately moist situations but does not endure well the dry heat of the interior. Resists frost fairly well. The timber is said to be superior to that of the Blue Gum for some purposes. Price, in cans, 3 to 4 ft., 10c; 4 to 5 ft., 15c.

E. Ficifolia. (Scarlet Flowering Gum.) This variety is grown in California strictly as an ornamental tree. The tree is of slow growing, spreading habit and produces bright flowers ranging from pink to scarlet that grow in large clusters, making the tree very conspicuous. Price, 1 to 2 ft., 50c.

E. Globulus. (Blue Gum.) This is the tree that has made eucalyptus wood famous in California. It is the most rapid growing, though not the largest, of the Eucalyptus. It thrives in the coast regions and in many of the interior valleys, but to do its best must have a good supply of water. On account of its quick growth it is useful for wind breaks and for shade, especially in a new country. The timber of the blue gum is rather light in color and is hard, strong and durable. It is used for ship building, carriage making and in the manufacture of agricultural implements and for handles for tools. Price, in cans, 2 to 3 ft., 5c; 3 to 4 ft., 10c; in flats, \$1.50 per 100 or \$12.50 per 1000.

E. Leucoxydon. This is one of the hardest and fastest growing Eucalypts. It attains a fair size but is inclined to grow a little crooked. It does well on the coast and in the interior. Is hardier than the common Blue Gum and will grow in many places where that variety will not thrive. Price, in cans, 2 to 3 ft., 10c; 3 to 4 ft., 15c.

E. Polyanthema. Red Box. This tree is of medium size and generally of a spreading habit. The leaves are round or broadly ovate. The timber is very hard, strong and durable. Price, in cans, 1 to 2 ft., 10c; 3 to 4 ft., 15c.

E. Robusta. Swamp Mahogany. This is a very symmetrical tree when young and makes a fine avenue tree for a time. The branches soon begin to break, however, and the tree soon assumes a very ragged appearance. Thrives well only in the coast regions. The timber is not in great demand but is said to last well underground. Price, 2 to 3 ft., 10c; in cans, 4 to 5 ft., 15c.

E. Resinifera. Red mahogany. Tree attains a height of 100 ft. The wood is of a rich color, resembling true mahogany, and is very heavy. Thrives well in the coast regions of California, but is said not to endure very high or very low temperatures. It is exceptionally fine for furniture where its weight is not against it. It probably grows more straight than any other Eucalypt. Price, 2 to 3 ft., 10c; in cans, 4 to 5 ft., 15c.

E. Rostrata. Red Gum. This variety is receiving more attention and exciting more interest at present than any other. It is commonly reported in Australia as growing to a height of 100 feet, but under favorable conditions grows to double that height, with a trunk diameter of 6 to 12 feet. The red gum grows under a great variety of conditions. While it prefers moist bottom lands with an equable climate, it will endure much heat, severe frost and considerable drouth, also withstands considerable alkali. When grown in large acreage in groves it grows fairly straight. It furnishes a timber that is valuable for many purposes; makes good railroad ties, posts, telephone poles. It is close grained and takes a polish well when used for interior finish. It is of a pleasing shade of red and takes a stain readily. In Australia it is also used for ship building, bridge building and blocks of it are used for street facing. In fact, it is used almost everywhere where a very hard durable timber is required. Price, in cans, 3 to 4 ft., 10c; 4 to 5 ft., 15; price in flats, \$1.50 per 100 or \$12.50 per 1000.

E. Rudis. Desert Gum. This variety is very highly thought of for hot, dry places, such as the interior valleys of California. It has withstood a maximum temperature of 118 degrees F., and a minimum of 15 degrees F. It is equally adapted to the coast regions. It makes a good quick growing shade tree and where the better known varieties will not thrive it should be planted for wood, wind breaks and other purposes where a quick growing tree is desired. Price, in cans, 2 to 3 ft., 10c; 3 to 4 ft., 15c; in flats, \$1.50 per 100 or \$12.50 per 1000.

E. Sideroxylon. Red Ironbark. Medium to large size. Wood is dark red and very hard and heavy. The leaves are very narrow. The flowers are in clusters, and in color range from light pink to scarlet. Thrives in rather a dry soil near the coast and on the plains and hillsides of many of the interior valleys, but will not endure the intense heat as well as some other varieties. It is used for bridge construction, railway ties, large beams in buildings and a great variety of purposes where strength and durability are required. Price, in cans, 1 to 2 ft., 10c; 3 to 4 ft., 15c.

E. Tereticornis. (Also called Red Gum in Australia.) This tree attains to a good size under favorable conditions and grows straighter and makes a more merchantable tree than the common Red Gum, the *Eucalyptus Rostrata*. The species thrives near the coast and in the interior valleys, enduring drouth well. It furnishes a very hard and heavy red colored timber that is durable in the ground and out. Its uses are practically the same as the *Rostrata* and by some the timber is considered even more durable. Price, 2 to 3 ft., 10c; 3 to 4 ft., 15c; in flats, \$1.50 per 100 or \$12.50 per 1000.

E. Viminalis. Manna Gum. This is a rapid growing tree sometimes reaching a height of 300 feet. It thrives under a variety of conditions and can be grown along the coast or in the hot interior valleys. Price, 2 to 3 ft., 10c; 3 to 4 ft., 15c; in flats, \$1.50 per 100 or \$12.50 per 1000.

Camphor. (*Camphora Officinalis*.) Comes to us from China and Japan. Grows to be a tree 40 ft. high. A very symmetrical tree, suitable for lawn planting as well as for streets and driveways. It is from this tree that the camphor gum of commerce is obtained. Price, 25c, 50c and \$1.00.

Casuarina Stricta. (Beefwood.) A quick growing Australian tree, 60 to 70 ft. Price, 6 to 8 ft., gal. cans, \$1.00.

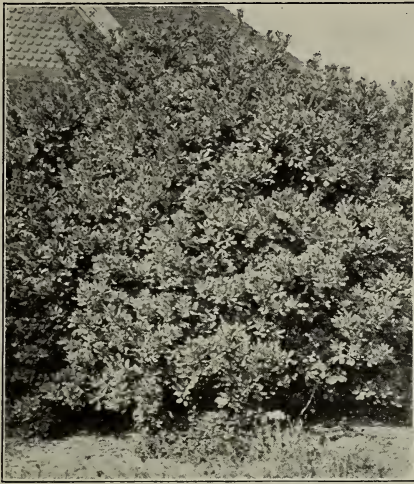
Ficus Australis. Australian Rubber Tree. This tree will stand considerable frost. There are many large trees in Southern California planted in door yards. It is also used as a house plant. Price, 1 to 2 ft., 30c; 4 to 5 ft., \$1.50.

F. Elastica. India Rubber Plant. This is the common rubber plant used for pot culture. The leaves are thick and heavy and it makes one of the most satisfactory house plants grown. Price, 4 in. pots, \$1.00.



Sweet Bay Tree
DESCRIPTION PAGE 20

Grevillea Robusta. Australian Silk Oak. A graceful fern leaved tree used largely for street planting. In the summer it is covered with conspicuous yellow flowers. Price, 2 to 3 ft., 25c; 3 to 4 ft., 50c.



Pittisporum Undulatum

DESCRIPTION PAGE 20

Harpephyllum Caffrum. (Kaffir Plum.) A tall, handsome tree with beautiful glossy foliage. Fruits like large olive. Price, 6 in. pots, 50c to \$1.00.

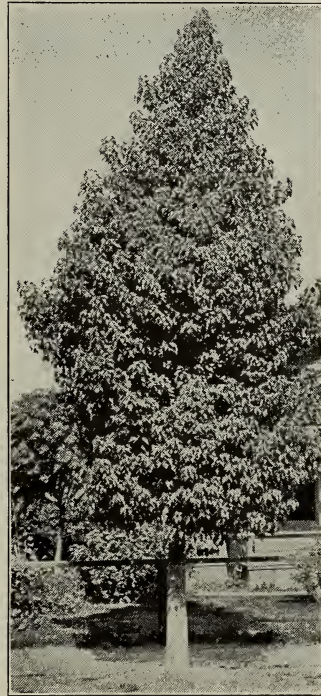
Jacaranda Mimosifolia. This tree comes from Brazil and has a very striking appearance. Has fine fern-like leaves and in the spring of the year bears large clusters of showy blue flowers. Very popular for a yard tree and in some places used as a street tree. Price, 4 in. pots, 25c; 5 gal. cans, \$1.50.



Ceratonia Siliqua (St. John's Bread)

DESCRIPTION PAGE 20

Lagunaria Pattersonii. A small growing tree that thrives near the coast. As so many trees and shrubs do not stand the salt air of the beaches, we consider this small ornamental tree a decided acquisition for coast planting. Leaves are bright green above and ashy gray underneath; has rather showy pink flowers. Price, in gal. cans, 50c.



Strecculia Diversifolia

DESCRIPTION PAGE 20

Laurus Nobilis. Sweet Bay Tree. This is one of the most highly prized of all evergreen trees. It is often grown in the open ground and attains a height of 40 to 60 feet. It is usually grown, however, as shown in accompanying illustration, as a standard tub plant. The leaves are fragrant and it is due to this quality that the particularly pleasant odor is imparted to bay rum. Price, in tubs, \$15.00 to \$30.00 per pair.

Live Oak. This is a very beautiful and imposing tree. It is generally considered a very slow growing tree, but under cultivation where it receives plenty of water its growth is fairly rapid. Price, 4 in. pots, 25c.

Macadamia Ternifolia. An Australian nut tree, attaining a height of 60 feet. The tree has dense shining foliage and bears nuts about one inch thick, flavored like filberts. Price, 3 in pots, 25c; 5 in. pots, \$1.50.

Magnolia Grandiflora. One of the most highly prized of flowering evergreens. Produces large, fragrant white flowers; these taken with large, glossy green leaves, make it a very showy and a very desirable tree. Attains a height of 80 feet. Price, in gal. cans, 50c; 5 gal. cans, \$1.00 to \$5.00.

Pepper Tree. (*Schinus Molle.*) A well-known and much planted tree with spreading habit, drooping branches and very graceful. Produces clusters of red berries. Price, 15c to \$1.50.

Pittosporum Undulatum. This tree grows to be 25 feet or more in height and very shapely. It is used in ornamental planting and for street trees. It is also grown as a hedge, for which it is very well adapted. Price, 4 in. pots, 25c.

P. Rhombifolium. A first-class ornamental tree well suited for avenue planting, symmetrical, pyramidal shape with fragrant flowers. Price, 4 in. pots, 25c.

Persea Gratissima. Arocada, or Avocado Pear. The most popular and valuable fruit

on the American market. Fruit used exclusively as a salad. Tree very ornamental. Price, seedlings, 5 in. pots, \$1.00.

Sterculia Diversifolia. Australian Plane Tree or Bottle Tree. Is of fine symmetrical appearance and upright growth. The leaves on different trees vary in shape from almost round to very deeply cut. Is very much used as a street tree. Price, 25c to \$1.50.

Ceratonia Seliqua. (Saint John's Bread.) One of the very best ornamental and shade trees. Forms a round, compact head and has bright, glossy green leaves. Stands drouth well. Price, in 4 in. pots, 50c; in gal. cans, \$1.50 to \$2.00.

Taxus Hibernica. Evergreen shrub with stout, crowded, upright branches and branchlets and glossy green leaves. Price, 2 to 3 ft., \$1.50.

Taxus Baccata. Tree similar to Hibernica, only grows more bushy. Fine for tubs. Price, 4 to 5 ft., \$2.50.

Thuja. (Common Arbor Vitae.) An evergreen shrub which grows conical in form, dense and regular. Suitable for cemeteries, parks etc. Price, 4 in. pots, 10c; balled, \$1.00.

Thuja Elegantissima. One of the Golden Arbor Vitae. Grows in pyramid form. Is of dwarf habit. Price, \$1.00 to \$2.00.

EVERGREEN SHRUBS

These shrubs cover a wide range of selection in producing most pleasing effects. Groups of evergreen shrubs add wonderfully to appearance of the winter gardens as they are continuously green. No garden is altogether satisfactory without some provision for the evergreens.

Abutilons. Flowering Maples. This is a large shrub or small open tree with showy bell-shaped flowers. We offer four varieties: *Thompsonii*, a double yellow; *Golden Bells*, a single golden yellow; *Souvenir de Bonne*, red flower, and *Rosafiora*, red. Price, 25c each.

Camellia. A very beautiful, glossy green leaved shrub. Flowers are very waxy in appearance. We have it in pink, red and white. Price, 5-in. pots, 75c to \$1.50.

FUCHSIAS

A small shrub common to nearly every house collection in the East and to nearly every flower garden in California. As a class they bloom profusely and no collection is complete without some of them. Price, 15c to 25c. We have the following varieties:

The Black Prince. A misnomer as far as name is concerned, being of a bright, waxy carmine; tube and petals large and broad, with pale green tips; large, open pale pink corolla, a wonderfully symmetrical habit and the best all-around Fuchsia we know.

Speciosa. Pale red tube and sepals; dark red corolla, there frequently being from thirty to forty flowers on a single branch.

Lustre. White tube and sepals, with bright crimson-scarlet corolla; good grower.

Mrs. E. G. Hill. A good variety, similar to Storm King. Sepals and tube red and a purple double white corolla.

Earl of Beaconsfield. Strong growing variety, red tube and sepals, single crimson corolla.

Col. Roberts. Red tube and sepals, with semi-double purple corolla; free bloomer.

Grevillea Thelmanniana. A wide-spreading shrub with fine feathery leaves and bright red flowers. A very fine and attractive plant where a large shrub is desired.

Thrives best in a dry situation. Price, 4 in. pots, 25c; gal. cans, 50c.

HIBISCUS

Double Crimson. This is a very desirable large double variety. In localities subject to heavy frosts the hibiscus will freeze down for the first few winters, but each time will send up an increased number of stalks which will bloom profusely. As the plant gets older it withstands the frost better. Price, in qt. cans, 25c; in gal. cans, 50c.

Single Crimson. Much the same in growth as the double crimson. Some growers think the single variety superior to the double. Price, 4 in. pots, 25c.

Peachblow. This is a semi-double, light pink variety; very popular; bush is similar to the two preceding ones in growth and general appearance. Price, 3 in. pots, 25c.

Manihot or Yellow Japanese. Not common, but very desirable. Inclined to grow but few stalks to the plant. Price, 3 in. pots, 25c.

Hydrangea Otaksa. A large, pink flowering variety with bright green foliage. Grows best on the north or east side of the house or other buildings where it is protected from the afternoon sun. When properly grown the bushes are six to eight feet across and covered with large heads of pink flowers. Price, 4 in. pots, 25c.

Laurestinus. A very common and well-known ornamental and hedge plant. Has very dark green foliage and bears clusters of small, white, waxy flowers. One of our best hedge plants. Price, 4 in. pots, 25c.

Lantana. This is a shrubby half climber. A very profuse blooming plant and makes a dense round top shrub. Will often make a mass of shrubby ten feet across in a single season. It is of various colors, red, yellow, pink and white with variations. Price, in qt. cans, 15c to 25c.

Muehlenbeckia Platyclados. Cocoloba or Sea Grape. An erect shrubby plant with flat, green rib-like branches with few or no leaves. The thin, flat branches performing the office of leaves. An interesting plant. Price, gal. cans, 25c.

DECIDUOUS SHRUBS

There are a few principles that should be observed in artistic arrangement of these beautiful ornamentals. The aim of the gardener should always be to have the taller shrubs act as a background, thus producing a gradual slope to the foreground. Irregular groups along fences or against buildings and along walks and drives are very effective.

Spiraea Prunifolia. (Bridal Wreath.) A low, bushy shrub with a great profusion of double white flowers. Very desirable on account of its early blooming. Price, 4 in. pots, 25c; gal. cans, 50c.

Spiraea Van Houtte. (Bridal Wreath.) Same as Prunifolia, only flowers are single and bush a stronger grower.

Field grown	\$.25
Gallon cans50

Crape Myrtle. (Lagerstroemia Indica.) One of our best deciduous shrubs. If de-

sired, it can be trimmed to a single stem and made to grow into a shapely little tree. Is a very striking shrub on account of the great profusion of bloom. We have it in pink and red. Pint in qt. cans, 25c; red in 5 gal. cans, \$1.00.

Lemon Verbena. A rapid growing shrub with pinkish white flowers. The leaves of this plant are very fragrant, having a strong lemon odor. Price, gal. cans, 25c.

Lilac. Purple. The common lilac of the Eastern garden. A strong growing shrub, blooming very early spring. One of the most fragrant of all flowers. Price in gal. cans, 25c; 5 gal. cans, \$1.00.

Lilac. White. Like the above only the flowers are white. Price, in qt. cans, or bare roots, field grown, 25c.

Poinsettia Pulcherrima. Christmas flower of Mexico; unsurpassed for the splendor of its brilliant scarlet flower bracts. Very showy and much admired. Requires a sunny location. Price, 4 in. pots, 25c.

Pyrus Malus Parkmanni. Flowering Apple. A small tree or large shrub that is covered with a profusion of apple blossoms. It is very beautiful and somewhat rare on the Coast. No amateur's collection is complete without it. Price, 3 to 4 ft., in gal. cans, 25c.

Snowball. (*Viburnum Opulus*.) The common Snowball. A hardy shrub that makes a large, bushy plant. In the early spring

it is covered with flower heads that resemble balls of snow by their whiteness and symmetry. Price, 4 in. pots, 25c; field grown, 25c.

Snowball. Japanese. (*Viburnum Plicatum*.) This is a popular variety. The flower heads are more numerous but smaller than the one above described. Price, 4 in. pots, 25c; field grown, 25c.

HERBACEOUS, ORNAMENTAL AND FLOWERING PLANTS

Abelia Grandiflora. China; very graceful, tufted habit; leaves shining; flowers white, almost everblooming. Price, 4 in. pots, 25c.

Abyssinian Banana. (*Musa Enseta*.) A non-fruit bearing, large leaved, decorative plant. Susceptible to frost, but in protected locations or in tubs is very fine for decorating. Price, 5 in. pots, 50c.

Achyranthus. We have this in two varieties—the bright red and the variegated green and yellow; very effective for bedding in mass. Also for borders. Price, 10c.

Agave. The Agaves or Century Plants are among the most valuable and striking plants that can be used for tropical gardens, lawn vases, verandas, etc. 5 in. pots, 25c.

Aralia. An ornamental shrub with dark green, shining foliage unsurpassed for half shade corners. Pure white flowers. Price, 6 in. pots, 50c.

Aspidistra. A grand old decorative plant from Japan. Leaves broad and canna like, variegated and green. Fine for house plants, as it stands more abuse than any other house plant. Price, 5 in. pots, \$1.00.

Banana. Fruit bearing. The common fruit-bearing banana. Forms clumps of many stalks that grow from 12 to 16 feet tall, usually blooming and forming a few scattered fruits along the flower stalk. A large clump in a sheltered place is very ornamental. Price, in gal. cans, 50c; 5 gal. cans, \$1.00.

Begonias. We have a good collection of these plants. They are very decorative with their glossy and many-colored leaves and their bright flowers. We carry several different varieties including Rex. Price, 4 in. pots, 15c to 25c.

Caladium Esculentum, or Elephant's Ear. A moisture-loving plant with large, tropical foliage. Very effective in shady corners and near water pools. Price, 5 in. pots, 25c; 7 in. pots, 50c.

California Holly. This is a shrub with a profusion of holly berries. Fine for the decorative effect of the berries. Price, 4 in. pots, 25c.

CARNATIONS

We carry a stock of the best varieties of red, pink, white and yellow. Price, 2½ in. pots, 5c each, or 50c doz.

Los Angeles. Best White. Large and perfect flower with good, strong stem.

Jas. Corbett. Best dark pink.

Fairmaid. Light pink.

Harlowarden. Crimson.

Dr. Choate. Scarlet.

Eldorado. Yellow.

Cinerarias. Flowers are very showy. Good for pot plants and, when set in beds, good for cut flowers. 10c each, \$1.00 per doz.

Coleus. We have several varieties of very fine Coleus; make very fine pot plants. Price, 3 in. pots, 15c.

CHRYSANTHEMUMS

We have several varieties of the very finest strains. Price, 4 in. pots, 10c each; \$1.00 per doz.

G. W. Poor. Red.

Col. D. Appleton. Bright yellow.

Beatrice May. White.

Golden Wedding. A good yellow.

Good Gracious. White to flesh color, sometimes shaded to pink.

Cuphea Llavea. Red, white and blue flower. Also called Cigar Plant. Used for baskets and for bedding. Price, 3 in. pots, 15c.

Cuphea Ignea. Cigar Plant. Flowers red, except at tip, which has a dark ring and a white mouth. Price, 3 in. pots, 15c.

DAISIES

Used mostly for edging, especially the English daisy, which is pink and white, and the Snowball, which is pure white. Price, per flat, \$1.50; per doz., 25c.

Alaska Shasta. This is the best of the Shasta Daisies, and is used both for borders and for bedding. Flowers are four inches across. 10c each; \$1.00 per doz.

Geranium. We carry these constantly in stock, both in single and double, and in the various colors in the common sorts and the white, light pink, dark pink and red in the Ivys. Price, 3 in. pots, 10c.

Heliotrope. Every yard should have a plant. We have it in light and dark purple, and white. Price, 4 in. pots, 15c.

Lavender. Old fashioned plants having grayish foliage. Leaves used for seasoning, but plants chiefly grown for flowers. Price, 4 in. pots, 25c.

Marguerites. Flowering plants, very easy of cultivation; fine for borders. Price, 5c each; 50c per doz.

Oleanders. Pink. This is the most common of the Oleanders. It grows to be a very large shrub. In fact, in California it can be trained into a tree. Price, 4 in. pots, 25c; gal. cans, 50c.

O. White. This is a very fine variety and very attractive when covered with its pure white flowers.

O. Yellow. Flowers are smaller than the pink and white, but the bush is similar.

Pansies. We have the finest strain of mixed Pansies of the large flowering type. Price, 25c per doz.; \$1.50 per 100 in flats.

Pampas Grass. A clump of Pampas Grass is very ornamental with its long white plumes waving in the air. Price, in gal. cans, 50c.

Papyrus Antiquorum. Egypt, Syria, etc. The classical "paper plant" cannot be dispensed with in any garden; nothing more

graceful for massing together with other tropical looking plants, or for single groups on the lawn, or for screening unsightly buildings, while it will constantly supply the most elegant material for house decoration. Not particular about soil or location, but will take any amount of water. Price, gal. cans, 50c.

Petunias. We have a very fine strain of double white only. Price, 10c each; \$1.00 per doz.

Pincenectitia. Desert plant, belonging to same family as Yucca; has a fleshy trunk surmounted by a great number of long linear and gracefully recurved leaves which make a very striking appearance. Splendid for tub plants, verandas, etc. Price, 5 in. pots, 50c.

Primula. These plants make a fine pot plant. Both the foliage and the flower are ornamental. Price, 10c each; \$1.00 per doz.

Romneya Coulteri. Matilija Poppy. This is the California State flower and no garden is complete without it. Easy to grow, likes sandy soil such as is found in washes; has immense snow-white flowers which open for months in succession. Price, 50c.

Salvias. Flowering Sage. A small herbaceous plant growing in pots or in the open; covered with a profusion of scarlet flowers. Price, 10c each; \$1.00 per doz.

Sultana Patens, or Sweet Sultana. A small herbaceous plant with glossy leaves and pink flowers. Always in bloom and desirable for individual plants or for bedding. Price, 10c each; \$1.00 per doz.

Verbenas. No flower garden is complete without a bed of Verbenas. We carry them in white, red, pink and purple. Price, 25c per doz.

Veronica Maratima. A small herbaceous plant sending up a flower stalk about 18 to 24 inches, with a deep blue flower. Price, 4 in. pots, 15c.

VIOLETS

Price, 25c per doz.

Princess. A large, single blue Violet with very long stem.

California. Large, single, very sweet scented.

Marie Louise. or double English, purple Violet.

Russian Violet. Very dark purple and shorter stemmed than Princess.

Swanley's White. A double white variety.

BULBOUS PLANTS

To the lover of flowers there is no class of plants so much prized as those which are produced from bulbs. The reason is easily found; within the bulbs are stored all the future glory of leaves and flowers, only requiring the simplest culture to develop them into their highest perfection, and producing flowers in the early spring when flowers are scarce.

Agapanthus Umbellatus. Blue Lily of the Nile. A very popular lily on account of its continuous blooming qualities, and the unusual color of its flowers. It repeatedly sends up stalks bearing a large bunch of blue flowers. Price, gal. cans, 50c.

Allium Grandiflorum. Flowering Onion. One of our earliest flowering bulbs. Fine for cut flowers or florist work. Large clusters of white flowers are borne on naked stems standing one to two feet tall. Price, 25c per doz.

Amaryllis Belladonna. Belladonna Lily. Forms immense bulbs, sometimes measuring two to three inches or more in diameter. Blooms in August and September, sending up a naked stem from 18 to 36 inches, bearing at the top a cluster of from three to a dozen beautiful pink lilies about four inches long, with a flaring tube about two and one-half to three inches across. Price, 25c each; \$2.50 per doz.

A. Johnsonii Red. Similar to the above variety, but much smaller bulbs and shorter flower stocks. 25c each; \$2.50 per doz.

A. Johnsonii White. This is like the red in size of bulb and length of flower stem. Price, 25c each; \$2.50 per doz.

Begonias. Tuberous Rooted. These produce large, waxy flowers that are very conspicuous by their bright color and waxy appearance. We have them in different colors, both single and double. Price, 15c to 25c.

Calla Lily. California is noted for its Calla Lilies. Here they grow to an immense size and great height. Some sections are famous for their Calla Lily hedges. Price, 10c each; 75 per doz.

CANNAS

Stenckoff. This the best dwarf red, producing flowers abundantly throughout the summer. Very effective when banked

against a building or massed in a bed. Price, 5c each; 50c per doz.

King Humbert. A magnificent variety with enormous foliage of the deepest shade of purplish bronze; flowers of immense size. Price, 15c each; \$1.25 per doz.

Ensetifolia. One of the tall reds; very fine. Price, 5c each; 50c per doz.

Lemon Yellow. One of the best of the yellows. Price, 5c each; 50c per doz.

Chinese Sacred Lily. One of the Polyantha Narcissus. Seems to grow equally well whether planted in soil or in a dish with nothing but water and its own store of food to produce the flowers, which are of the large, white Narcissus with cream or yellow centers. Price, 5c each; 25c per doz.

Cyclamen. Also called Persian Violet. This is a very showy flower, grown from a flat cone or bulb. The flowers are in different shades from red to white. Price, 4 in. pots, 25c; 5 in. pots, 50c.

Dahlias. Our bulbs are very fine. We have the large, double dark red, the lemon yellow and the pure white. Price, 10c each; \$1.00 per doz.

Easter Lily Bulbs. We have the Liliun Candidum and the Liliun Longiflorum. Price, 15c each; \$1.25 per doz.

Gladiolus. These plants thrive well in various soils. They are profuse bloomers and make a fine bed or border. Price, 10c each; \$1.00 per doz.

Hyacinths. These are always free bloomers and very fine for cut flowers. One of the most easy of culture of all the bulbs. Price, 10c each; \$1.00 per doz.

Iris, Japanese. A very fine group of the Iris. Very showy and exciting admiration wherever seen. Price, 10c each; \$1.00 per doz.

Iris, German. These are the most common of the Irises. They are very variable in form and color and should be in every flower garden. Price, 10c each; \$1.00 per doz.

Narcissus. We have both the single and the double, including the Chinese Sacred Lily. They are easy of culture and make a good display of flowers for a small outlay of money. Price, 5c each; 35c per doz.

Tulips. We have made a careful selection of varieties and offer only those best suited to California. Price, 10c each; 75c per doz.

DRACAENAS AND PALMS

The palm, the most highly ornamental of plant life, is particularly adapted to California owing to the semi-tropical climate. All varieties thrive well and for that tropical appearance, make our gardens attractive to Eastern friends. After once established, their culture is very easy and no garden is complete without a few of the different varieties.

DRACAENAS

Dracaena Australis. This is the best of the common Dracaenas. Leaves are broad and graceful drooping. These make fine tub plants; also fine for street planting. Price, 1 to 2 ft., 5 in. pots, 25c; balled, \$1.00 to \$5.00.

D. Indivisa. Growth is similar to above except that the leaves are only about one-half as wide. Price, 1 to 2 ft., 25c; balled, \$1.00 to \$5.00.

We also have fancy striped leaved Dracaenas for pot culture.

PALMS

Chamerops Excelsa. Windmill Palm. A slow-growing fan palm with deeply cut leaves. Leaves remain green well down the stem, which is covered with stringy, fibrous material. A desirable palm for street planting, as it does not spread into the walks. Price, 4 in. pots, 25c; balled, \$1.00 to \$5.00.

Cocos Australis. A very ornamental but slow growing palm. Is of sturdy growth, with more or less bluish cast to the leaves. Price, 5 in. pots, \$1.00.

Cycas Revoluta. Sage Palm. A fine, decorative palm. Dwarf in habit, hardy and very ornamental. Price, 20c per leaf.

Erythea Edulis. Is a hardy fan palm, suitable for street or park planting. Price, 4 in. pots, 25c.

Kentia Forsteriana. Considered the best and most graceful of the house decorative palms. Not hardy for out-of-door culture. Price, 5 in. pots, \$1.50; 10 in. pots, \$2.50.

Latania Bourbonica. A bread leaved fan palm with very graceful, drooping leaves; make fine plants for tubs or for open ground. Price, in tubs, \$1.50.

Phoenix Canariensis. The most popular of all hardy palms for out of door culture. It grows rapidly, is very graceful and makes a fine yard or park specimen. Also makes a very fine tub plant. Price, 5 in. pots, 25c; balled, 4 to 5 ft., \$2.00; 3 to 4 ft., \$1.50; 2 to 3 ft., \$1.00; 1 to 2 ft., 50c.

P. Roebelenii. The most graceful of all the Phoenix. A palm which has become very popular for room decoration. The plant is of vigorous growth with graceful recurving, narrow, dark green pinnae leaves, giving it lightness and airiness not surpassed, if equaled, by any other palm. Price, 6 in. pots, \$2.50.



Phoenix Canariensis

Rhapis Flabelliformis. Umbrella Palm. Leaves borne mostly at the top of bamboo-like stems. Suckers freely, giving the plant many stalks. Makes a fine tub plant. Also fine for a clump in the open. Price, 3 ft., \$2.50.

Seaforthia Elegans. A fine palm and very ornamental as a pot or tub plant. Price, 4 in. pots, 25c; 10 in. pots, \$2.50.

Washingtonia Filifera. California Fan Palm. A rapid growing palm that in the past has been very popular and very largely planted. Leaves soon die and drop down onto the stem, where they form a whitish-gray circle, the green leaves appearing only at the top of the stem. Price, 3 to 4 ft., balled, \$1.00.

W. Robusta. Mexican Fan Palm. Leaves are similar but with shorter leaf-stalk or petiole than Filifera. Does not get so brown in cool weather and holds its leaves much farther down the trunk of the tree. In every way a better tree than the preceding variety. Price, 4 in. pots, 25c; balled, 50c to \$2.00.

HEDGE AND BORDER PLANTS

The arrangement of some varieties of trees and shrubs for the hedge is desirable and can be used with pleasing effect. To secure a compact hedge and one of even growth, it is necessary when the plants are first set out to prune back severely, thus encouraging strong bottom growth and making the foundation of a good hedge.

Getting away from the stone or wood borders along the path or driveway, nothing adds to the beauty of the grounds as a carefully selected border plant, well pruned and properly taken care of.

Barberry. Makes a beautiful hedge when kept properly trimmed; also useful for screens, wind brakes and boundaries. Price, gal. cans, 25c.

Boxwood. *Buxus Sempervirens.* Dwarf Boxwood; generally used for edging of walks. Price, 10c to \$1.00.

California Privet. *Ligustrum Ovalifolium.* One of the best hedge plants we have. Stands trimming well and makes a symmetrical, compact hedge. The leaves are a dark, shiny green. Can be pruned to any desired height up to fifteen feet. Price, in flats, \$2.50 per 100; in cans, 10c each.

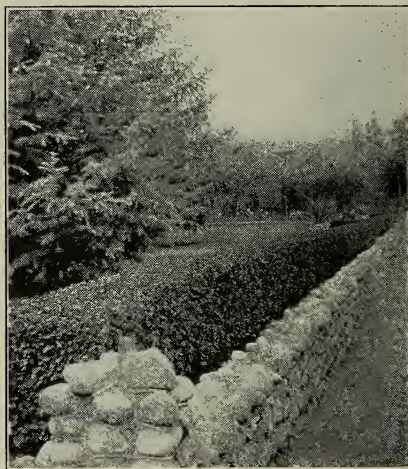
Daisy. See description, page 23.

Dusty Miller. Plants with beautiful silvery foliage; largely used for border edgings, etc. Price, 2½ in. pots, 10c.

Euonymus Japonica. An upright shrub, growing eight to ten feet. Leaves are thick and of a glossy green color, narrowly elliptical and two to two and one-half inches long. Makes a fine individual shrub or a fine hedge plant. Price, in flats, \$2.50 per 100.

E. Pulchellus. Dwarf Japanese Box. This is a small leaved, very dwarf variety of the *Euonymus Japonica*. Good for hedging or planting along driveways, but too dwarf for a street hedge. Price, in flats, \$2.50 per 100.

E. Silver Variegated. Another very pretty variety with white blotched leaves. Price, in qt. cans, 25c.



California Privet

E. Golden Variegated. Another very pretty *Euonymus* with beautiful golden yellow leaves. Price, in cans, 25c.

Myrtus Communis. An evergreen shrub with pretty green foliage which is much prized for its aromatic foliage and pretty white flowers. Price, 3 in. pots, 10c.

Santolina. A very quick growing, silvery border plant. Easy to train into a compact border. Must not be allowed to bloom as it spoils the shape of the plant. Price, in flats, \$2.50 per 100.

GRASS SEED

Grass Seed for Lawns.

As prices on grass seed fluctuate from time to time, we are obliged to ask you to write us for quotations, or send in your order and we will fill the same at current prices.

We carry **Kentucky Blue Grass** and **White Clover** in bulk and **Golden Gate Mixture**,

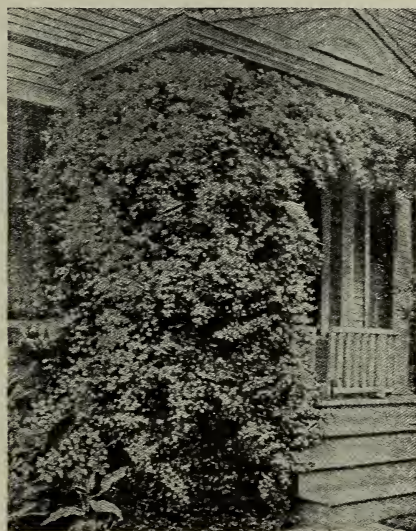
put up in one pound packages at 25 cents each.

As a guide for the proper quantity to order, we may state that one pound of mixed grass seed or Kentucky Blue Grass is sufficient to thoroughly sow an area of 10 by 15 feet or 150 square feet.

CLIMBING, VINING AND TRAILING PLANTS

Well placed and carefully selected vines add untold beauty to the house and garden. Their artistic appearance on the arbor, the veranda, the fence, or climbing the side of the house is such that no other treatment can produce.

Ampelopsis Quinquefolia. Virginia Creeper. A rank growing deciduous climber, well known everywhere. The leaves turn scarlet in the fall, giving it a very beautiful appearance. Price, 4 in. pots, 35c.



Clematis Jackmanii

A. Veitchii. Boston Ivy. Japanese Ivy. A high climber with disk-like tendrils, with which it adheres to walls of all kinds. The glossy foliage stands dust and smoke well and turns to a crimson in the fall. Probably the most highly prized of all hardy deciduous climbers. Price, 4 in. pots, 25c.

Antigonon Leptopus. Mexican Rose, or Rosa de Montana. A beautiful climbing plant with tuberous roots. Very free bloomer during the late summer. Flowers produced in large racemes of a most beautiful rosy pink color. Price, 4 in. pots, 25c.

Australian Pea Vine. We have two colors of this vine, the pink and the white flowered. It is a rapid growing vine and is

fine to use where a perfect screen is desired. The flowers are borne in great profusion. Price, 2½ in. pots, 10c.

Bignonia Venusta. A strong grower with glossy green foliage. Flowers crimson to orange, mostly in drooping racemes. Price, 4 in. pots, 25c.

B. Jasminoides. A tall, rampant climber, but needs a very rich soil, and, during dry weather, an abundance of water. In good soil it grows in one season from 20 to 30 feet high. Price, 4 in. pots, 25c.

Bougainvillea Braziliensis. This is a variety of Bougainvillea Spectabilis. It comes from Brazil. Leaves are larger and thicker than the Sanderiana. Bracts are larger, deep rose color but varying to purple. Price, 4 in. pots, 35c.

B. Spectabilis. One of the best. Flowers and foliage larger than Sanderiana, but not as free blooming. Price, 4 in. pots, 35c.

B. Sanderiana. This is the Bougainvillea so commonly seen climbing on porches and lattice work. The floral bracts are not so large as the previously described varieties, but it is a profuse and persistent bloomer and one of our most desirable plants. At most seasons of the year it is simply one mass of color. Price, 4 in. pots, 25c; gal. cans, 50c.

Cinnamon Vine. A well known hard climber, quick grower, with beautiful, glossy, heart-shaped leaves and sweet-scented flowers. Price, 4 in. pots, 25c.

Clematis Jackmanii. A very fine purple variety. Contains the best blood of the Clematis family and it is to this variety in a large degree that the popularity of the Clematis is due. Price, 4 in. pots, 25c.

C. Montana. This plant is of stronger growth than any other of the Clematis; succeeds under the most adverse conditions. Price, 4 in. pots, 25c.

C. Paniculata. Virgins Bower. This is the most common of the Clematis. Has small white flowers, which it produces in the fall in great profusion. Price, 4 in. pots, 25c.

Ficus Repens. Creeping Rubber Plant. This requires a protected place when young. Is fine for covering old rock walls and the like. Evergreen. Price, 2½ in. pots, 10c.

Hedera Helix. English Ivy. A strong growing evergreen. Good for covering walls. Price, 3 in. pots, 10c.

Honeysuckle. Chinese Evergreen. A fine evergreen vine with rich, cream yellow flowers. Good where a dense covering or screen is desired. Price, 4 in. pots, 25c.

Honeysuckle. Japanese Variegated. Leaves are a beautiful glossy green, variegated with yellow. Flowers cream yellow. A desirable vine. Price, 3 in. pots, 25c.

Jasminum Revolutum. Italian Yellow Jasmine. More of a shrub than a climbing plant. Leaves thick and evergreen. Flowers bright yellow, in open clusters. Price, 4 in. pots, 25c.

Lotus Vine. A fine vine with silvery foliage and scarlet flowers. Fine for rockeries. Price, 2½ in. pots, 10c.

Moonflower. Ipomoea Bona-nox. Comes from the American and Asiatic tropics. The original type of this vine is white flowered. There are now in the horticultural trade various varieties and variations in color of the Moonflower. We have the white and the blue. Price, 2½ in. pots, 15c.

Muehlenbeckia Complexa. Wire Vine. Flowers are small and of a waxy whiteness. The stem is slender and wiry with small, broad, oval leaves. Makes a fine appearance when it has attained a little age and size. Price, 3 in. pots, 15c.

Passion Flower. We have the pink and scarlet Passion Flower. A very strong

grower; deeply three-lobed leaves. Flowers three inches or more across. Price, 25c.

Plumbago Capensis. Blue Plumbago. An evergreen vine with bright green foliage and bearing profusely, clusters of blue flowers. A very desirable vine. Price, gal. cans, 35c.

Smilax. Grown for decorative purposes. Has a green, wiry stem with small ovate leaves. Price, 4 in. pots, 15c.

Solanum Wendlandii. Is a large blue flowering vine. Flowers are very conspicuous as they bloom in clusters. Price, 4 in. pots, 25c.

Swainsonia Alba. Sometimes called the Winter Sweet Pea. The flowers are pure white and pea-like in form. It is a very popular flower. Price, 15c.

Tecoma Rosea. Evergreen vine of the Tecoma family which are so popular for pergolas, etc. Flowers pink. Strong grower. Price, 4 in. pots, 25c.

T. Grandiflora. Trumpet Flower. Sometimes called Bignonia Grandiflora. Only about a half climber. Flowers in terminal racemes in clusters of orange yellow flowers. A very desirable plant. Price, gal. cans, 35c.

Vinca, or Periwinkle. We have the green-leaved and the variegated. Both have blue flowers, good for covering rockeries. Price, qt. cans, 15c.

Wistaria. We have the blue and the white. Probably the most profuse bloomers of all the vines. Flowers in long, drooping racemes. Price, in gal. cans, 35c and 50c.

FERNS

In the dark, shady corners around the houses, no other plant can take the place of the fern. While other plants will grow there, the fern thrives. In California, where the oaks are abundant, great results can be obtained by putting in a rockery and filling it with the different varieties of Ferns. Potted, the Fern makes an ideal house or porch plant, and in hanging baskets, they make pleasing effects.

Adiantum. Maidenhair Fern. This is always a popular variety. Makes a fine pot plant and is fine for use with cut flowers. Does best in a shady place, as do most other ferns. Price, 35c and 50c.

Asparagus Plumosus. A decorative pot plant, very highly prized as a house or porch plant. Is equally effective either in a flower pot or in a hanging basket. Has beautiful feathery foliage and is commonly called Asparagus Fern. Supplies good strings of green for decorating. Price, 4 in. pots, 25c.

Asparagus Sprengerii. Another ornamental asparagus plant, but quite different from the previously described one. One of the best of plants for pot or hanging baskets. Throws out long stems that are well covered with fine green leaves. Fine for cutting where stems three to four feet long are desired. Price, 5 in. pots, 25c; 4 in. pots, 20c; 3 in. pots, 15c.

Boston Sword Fern. Probably the most common and most used of all ferns. It is hardy and easily managed, sending up long fronds that droop in a graceful manner. Fine for pot plants or for a fern corner. Price, 4 in. pots, 35c; 5 in. pots, 50c.



Boston Sword Fern

Cyrtomium Falcatum. Holly Fern. A fine fern with thick dark green leaves. Dwarf and bushy and very graceful. Price, 4 in. pots, 25c.

Common Sword Fern. Similar to the Boston, but fronds are narrower and more erect in growth. Price, 4 in. pots, 25c.

Elegantissima. An improvement on the Piersonii Fern. Fronds are more finely divided than in the Piersonii. Price, 4 in. pots, 50c; 6 in. pots, 75c.

Pteris Tremula. Fine fern for quick effect in north borders or ferneries. Price, 4 in. pots, 25c.

Whitmanii. This is an improved *Elegantissima*. The habit of growth is more mixed. The fronds are less apt to revert back to Boston, from which these variations have sprung. The fronds of this variety are very feathery and broad. Price, 4 in. pots, 50c; 5 in. pots, 75c.

Nephrolepis Superbissima. Fluffy Ruffles Fern. This is a new fern. The fronds are so irregular in growth that someone suggested the above name. Very odd and attractive. Price, 4 in. pots, 50c.

N. "Roosevelt." A new fern, similar to the Boston, but with the leaves very pinnae and beautifully undulated, giving the fern a pronounced waxy effect seen in no other fern. As the plant ages this effect becomes quite distinct. Everybody will want this grand fern. Price, 5 in. pots, \$1.00.

Brake Ferns. (*Woodwardia*.) The fronds of these ferns are very large and broad, measuring up to 1½ feet wide and six to seven feet long. Fine for a fern background and to cut for decorative purposes. Price, 50c each.

Hanging Baskets. Of *Asparagus Plumosus*, *Asparagus Sprengeri*, Boston Fern, *Whitmanii* Fern, Trailing Lantanna, *Coleus*, *Begonias*, etc. Price, \$1.00 to \$3.00.

BEAUTIFUL FOR LAWNS

Lippia Repens. This is a lawn covering material, forming a thick sword and takes much less water than grass or clover and stays green all the year. Is not hard to eradicate when desired, yet will withstand drouth and abuse better than Bermuda grass, the homemaker's pest. The sod is

cut in pieces two inches square, and set in the lawn 12 to 18 inches apart, and *Lippia Repens* does the rest. It has a small, whitish flower and somewhat resembles white clover at a distance. It is a *Verbena*, consequently easy to eradicate when desired. Price, in flats, 50c each.

ONE OF THE MOST PROFITABLE VEGETABLES

Crimson Winter Rhubarb. One of Luther Burbank's latest and best productions. It meets every demand, both for home consumption and for market purposes. It being a cross between one of the Australian varieties and the wild rhubarb of California, it is peculiarly adapted to our South-California climate. No home garden or

market is complete without it. Being in a growing condition twelve months in the year it fills a long felt want in the home and in the market. Stocks are tender and stringless and of delicious flavor when cooked. It is easy of culture, needing little care. Price, 15c each; \$1.00 per doz. roots.

THE ROSE

QUEEN OF FLOWERS

"Would Jove appoint some flower to reign
In matchless beauty on the plain,
The Rose, mankind will all agree,
The Rose, the Queen of Flowers should be."
—Sappho.

ROSES—25c each. \$2.50 per doz; or Our Selection, \$1.50 per doz.

Agrippina. Rich scarlet; always in bloom.

American Beauty. Very double, of a deep crimson color, and very fragrant.

Black Prince. Splendid dark crimson flowers, which are shaded so deeply as to be almost black; cupped, large, full, fine shape.

Baby Rambler. This new French Rose (Mme. Norbert Levavasseur) is a cross between Crimson Rambler and Glory of Polyanthus, retaining the color of the former with the exceedingly free flowering habit of the latter. The flowers are borne in clusters of 30 to 40, and the foliage is dark, glossy and profuse.

Bessie Brown. A strong, vigorous grower of erect, branching habit, flowering in great profusion from June until frost; flowers of perfect form, large size, of good substance and highly fragrant; color creamy white.

Bride. This is decidedly the most beautiful white Tea Rose. The flowers are very large and double, on long, stiff stems, of fine texture and substance.

Bridesmaid. Very large size, and of regular full form, delightfully tea-scented; color, clear rose-pink. A free and constant bloomer; makes elegant buds for cutting.

Bon Silene (Tea.) An old favorite. Deep carmine, crimson buds, opens pink.

Christine de Noue. (Tea.) A rose producing fine buds of rich red or deep rose.

Catherine Mermet. (Tea.) This is a fine pink rose, a good grower and bloomer. For out of doors Catherine Mermet is one of the very best pink roses.

Captain Christy. (Hybrid Tea.) Delicate, flesh pink, rosy center. Very large size usually.

Caroline Testout. Bright satiny rose, with brighter center, full and globular; very free and sweet; one of the most valuable roses in the collection.

Duchess de Brabant. (Tea.) This rose combines exquisite perfume, beautiful coloring and matchless profusion of flowers. A soft, light rose with heavy shading of amber-salmon.

Duchess of Albany. (Hybrid Tea.) This rose is simply a La France, only several shades deeper in color, being a lovely shade of deep rose or pink. Often called the Red La France. Superb in every respect.

Etoile de France. A new red rose. One of the richest red roses grown and a very promising variety for Southern California.



Bridesmaid



Frau Karl Druschki

Etoile de Lyon. (Tea.) This is the best yellow bedder to date. Buds and bloom both very double and of large size; color deep golden yellow. It blooms freely and every flower is a gem.

Frau Karl Druschki. Flowers very large, snow white, free bloomer, good foliage, much used for cut flowers.

Golden Gate. (Tea.) This is one of the really meritorious Tea Roses; a strong grower; flowers of fine, large size; buds beautiful; color, shell pink, shading to creamy-flesh on outer petals.

Gruss an Teplitz, or Greeting of Teplitz. (Hybrid China.) As a bedding rose this is one of the finest and most useful varieties ever sent out. Many of our customers who bought it the past few years are realizing its value and singing its praises. It will take rank with *Hermosa* or *Soupert*. The color is brightest scarlet, shading to deep, rich, velvety crimson.

General Jacqueminot. Bright red, fragrant. This is too well known to need description.

General McArthur. The richest crimson. One of the sweetest varieties. A vigorous grower, producing long stems. Specially well adapted for California and Pacific Coast region.

Isabella Sprunt. A clear, light yellow; a popular variety, strong grower and free bloomer.

Kaiserin Augusta Victoria. (Hybrid Tea.) Strongest growing, freest blooming, most perfect flowers of the Hybrid Teas. Large, fine buds of pure white. Does not pink up when planted out; best white for all seasons. It will be very difficult to produce a finer rose than this charming variety.

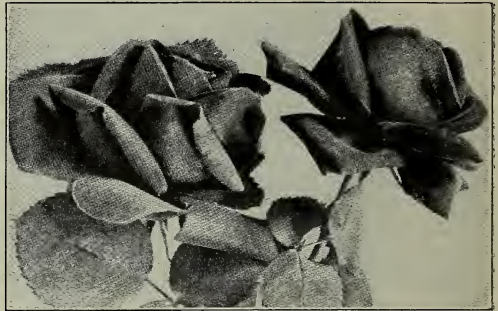
Helen Gould. An old time favorite; fine rosy crimson; large, full flower; free bloomer.

Killarney. This great Irish Hybrid Tea Rose is of recent introduction. It is perfectly hardy. A strong, robust grower with bright foliage, flowering very freely throughout the season. The flowers are very large, and buds long and pointed. The color is beautiful satiny pink, shaded and suffused pale pink.

La France. It is of superb form, and double as a rose can be. No variety can surpass it in delicate coloring—silvery-rose shaded with pink.

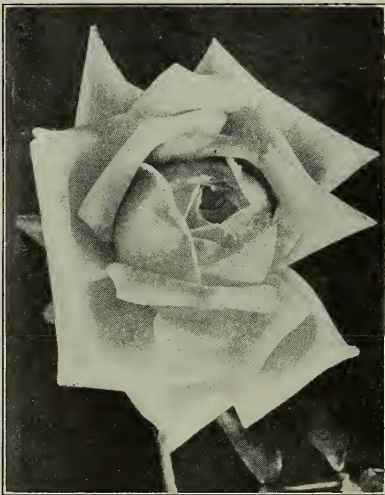
La Detroit. Another new one of the best flowering varieties, producing large double rose-colored flowers, daintily shaded pink.

Magna Charta. (Hybrid.) Clear rosy-red. Free in spring, sparingly later. Hardy.



Liberty

Marie van Houtte. Of fine, faultless, straw-yellow color, with the outer petals washed and outlined with a bright rosy-crimson; occasionally the whole flower will be suffused with light pink. It grows vigorously, blooms profusely, and is most deliciously scented.

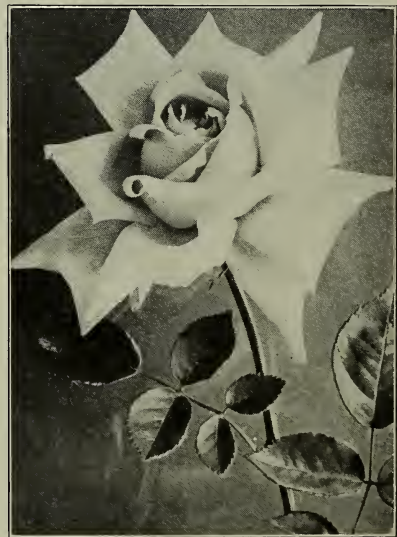


Kaiserin Augusta Victoria
[SEE PAGE 31]

Liberty. Very free flowering, bright crimson scarlet of an even shade throughout. Very floriferous.

Madame Abel Chatenay. This is a wonderfully strong, healthy growing variety, with rich, bright foliage. A grand bedding rose, as it is a profuse and continuous bloomer. Flowers large and full, petals recurved and of a beautiful creamy-rose, shaded with rose-vermillion and tinged with salmon.

Mme. Cecil Brunner. The finest of Fairy Roses. Perfectly double and delightfully fragrant. Color a rosy pink and nearly always in bloom; fine for cut flowers.



La France

Malmaison. A noble rose; flower is extremely large and double; color flesh white, clear and fresh. Has been considered the finest Bourbon Rose for many years.

Maman Cochet. One of the very best and most valuable roses, especially for out-door blooming. The flowers are of great size and very double; color bright rose; fine for cut flowers.

Meteor. A velvety-red ever-bloomer of the deepest glowing crimson. As fine as a Hybrid; flower of medium size, very double, and petals slightly recurving.

New Pink Cherokee. Climber of recent introduction. A pink form of the beautiful White Cherokee, only flowers are larger and of a lovely salmon-rose color with center of golden stamens and beautiful dark green foliage. Nice plants, 50c each.

Paul Neyron. Deep shining pink. Flowers often five inches in diameter. It is a strong grower; almost thornless. Considered the finest pink rose.



President Carnot

Paquerette. Cemetery Rose. Pure white flowers and very double.

Papa Gontier. (Tea.) A fine forcing rose, also fine for field planting. We sell immense quantities of this fine rose. It has a fine bud, open flower, semi-double. Color dark carmine, flushed crimson.

Pres. Carnot. The flower is of large size, of exquisite shape, with heavy, thick, shell-like petals; long and pointed. Color delicate rosy flesh, shaded a trifle deeper at center.

Perle des Jardines. (Tea.) A grand yellow rose. This variety is planted largely for cut flowers.

Rainbow. (Tea.) Same as Papa Gontier, except the flower is striped with crimson.

Richmond. (Hybrid Tea.) It is of strong and rapid growth and more vigorous than any other forcing variety in commerce. It comes to perfection without special care or culture, and can be grown in the same soil and temperature and with the same treatment given the Bride.

Sunset. (Tea.) The color is a remarkable shade of rich, golden-amber, elegantly tinged and shaped with dark, ruddy copper, intensely beautiful and resembling in color a splendid "after-glow."

Single Cherokee. (Climber.) White flower with shining green foliage; a profuse spring bloomer, extensively used for covering fences.

Double Cherokee. A beautiful, hardy climbing rose, bearing double white flowers; very fine foliage; very distinct and a strong grower.

Striped La France. (Tea.) A strong grower and an old favorite; a bright apricot yellow, changing to orange-fawn. Very much esteemed.

Ulrich Brunner. Bright cerise red, a magnificent rose.

Veilchenblau. (The Blue Rose.) A new rose which makes a decided advance in the color of the rose hitherto only dreamed of. A seedling from Crimson Rambler, semi-double; flowers larger than that variety; produced in large trusses; first opens pink, but quickly changes to violet blue. Very distinct and extremely pleasing. Price, 50c.

Vick's Caprice. Dark red, striped with white; very odd.

W. R. Smith. Or Maiden Blush. Fine summer bedder, producing quantities of fine, creamy-white flowers with pink shadings.

White La France. Hybrid Tea.) This is a most beautiful rose; ranks with La France. In color a fawn white, of the true La France type; superb.

White Maman Cochet. (Tea.) The flowers are of enormous size, remarkably round and full, pure; clear snowy-white throughout when grown under glass; when grown out of doors it pinks like Bride, but the pink only adds to its beauty, and it is delightfully tea-scented. It is by far the finest and most reliable bedding rose yet produced. Anyone can have the very finest roses for cutting all summer and autumn by planting a few plants of it.

CLIMBING ROSES

Climbing Meteor. (Climbing Hybrid Tea.) The brightest color of all roses. Climbing Meteor is the acme of all red roses. It is a free, persistent bloomer, and will make a growth of from ten to fifteen feet in a season.

Climbing Papa Gontier. A strong grower and a beauty; foliage and flowers identical with the bush Papa Gontier.

Climbing Cecil Brunner. The same as bush rose, but a very rapid climber and not such a free bloomer.

Climbing Kaiserin. (Climbing Hybrid Tea.) This is, without doubt, the grandest of all white climbing roses. It is the first and only pure white hardy ever-blooming rose, and as such meets a demand that has never before been supplied. It is a strong, rapid grower, growing to perfection in open ground and throwing up numerous shoots ten feet high in a single season. The flowers are something grand. They are extra large, full, deep and double, and are produced on long, stiff stems. The buds are long and pointed, exquisitely modeled and gracefully finished.

Cloth of Gold, or Chromatella. (Climbing Tea.) A clear golden-yellow, large, very full and double; highly fragrant. Highly prized in the South for pillars and verandas.

Dorothy Perkins. A most beautiful shell pink; flowers in large clusters and sweet scented.

Gold of Ophir. Nasturtium-yellow, suffused with coppery-red; one of the most beautiful of the climbing roses.

James Sprunt. Color bright crimson; flowers cup shaped; a strong grower, free, sweet scented.

Crimson Rambler. This plant is of very vigorous growth, making shoots from eight to ten feet during the season, rendering it a charming pillar rose. It is also magnificent in bush form, and for covering buildings, trellises, etc., it cannot be excelled. One of the striking characteristics of this rose is its remarkable color, which is of the brightest crimson, which remains undimmed to the end, showing none of the objectionable purplish tint so common in crimson roses.

Caroline Goodrich. (Pillar Rose.) An ever-bloomer, blooming in clusters; color, light red; has the delicious fragrance of the Hybrid Perpetuals.

Reine Marie Henriette. A rampant climber; fine in bud, free bloomer; in color a bright red, a shade lighter than General "Jack"; a first-class rose in every respect.

La Marque. Pure white, in large clusters. One of the best white climbers.

Mme. A. Carrier. A double white rose, slightly flesh color; sweet scented; a very hardy and free bloomer; always in bloom.

Marechal Niel. (The World-Renowned Rose.) A beautiful deep sulphur-yellow, very full; very large and exceedingly fragrant. It is the finest yellow rose in existence. It has a climbing habit, and where it is permitted to grow until it has attained a large, size as it will in a few years, it yields thousands of beautiful golden-yellow flowers.

Striped Henrietta. Like Henrietta, except that the petals are striped with a very delicate pink. Good grower; free bloomer.

Reve d'Or. Golden Chain, or Climbing Safrano. A beautiful pillar rose, being a strong climber; color, orange-yellow or deep saffron; good size, full and sweet.

Wooten, Climbing. A strong grower; blooms in great profusion; color, bright magenta, passing to a violet crimson.

Yellow Banksia. Same as White Banksia except color of bloom is yellow instead of white.

CUT FLOWERS

We make a specialty of floral work and always carry on hand a good stock of supplies so that we can fill your orders on short notice.

TOPICAL INDEX

FRUIT DEPARTMENT

DECIDUOUS FRUITS.

Apples 3
 Apples, Crab 5
 Apricots 6
 Cherries 6
 Figs 9
 Grape Vines 10
 Loquats 9
 Nectarines 8
 Olives 10
 Peaches 7
 Pears 5

Plums 8
 Persimmons, Japanese 10
 Quinces 6

SMALL FRUITS.

Blackberries 11
 Currants 11
 Dewberries 11
 Gooseberries 11
 Loganberries 11
 Raspberries 11
 Strawberries 11

CITRUS FRUITS.

Grape Fruit 12
 Lemons 12
 Oranges 12

TROPICAL FRUITS.

Alligator Pear 12
 Pomegranate 12

NUT FRUITS.

Almonds 13
 Chestnuts 13
 Walnuts, English 13
 Pecan 13

ORNAMENTAL DEPARTMENT

DECIDUOUS TREES.

Acer Dasyacarpum 14
 Catalpa Speciosa 14
 Fraxinus Americana 14
 Locust, Black 14
 Locust, Honey 14
 Melia Azedarach 14
 Populus Deltoides 14
 Populus Nigra 14
 Ulmus Americana 14

Pittosporum Undulatum 20
 P. Rhombifolium 20
 Persea Gratissima 20
 Sterculia Diversifolia 20
 St. John's Bread 20
 Taxus Hibernica 20
 Taxus Baccata 20
 Thuja 20

EVERGREEN SHRUBS.

Abutilons 20
 Camellia 20
 Fuchsias 20
 Grevillea Thelemanniana 21
 Hibiscus 21
 Hydrangea 21
 Laurestinus 21
 Lantana 21
 Muehlenbeckia 21

EVERGREEN TREES.

Acacia, The 15
 Araucaria, The 15
 Camphor 18
 Casuarina Stricta 18
 Cedar, The 15
 Cypress, The 16
 Eucalyptus 16
 Ficus Australis 18
 F. Elastica 18
 Grevillea Rolosa 18
 Harpephyllum Caffrum 19
 Jacaranda Mimosifolia 19
 Lagunaria Pattersonii 19
 Laurus Nobilis 19
 Live Oak 19
 Macadamia Ternifolia 20
 Magnolia Grandiflora 20
 Pepper Tree 20
 Pines, The 16

DECIDUOUS SHRUBS.

Crape Myrtle 21
 Lemon Verbena 21
 Lilac 21
 Poinsettia 21
 Pyrus—Malus Parkmanni 22
 Snowball 22
 Spirea Prunifolia 21
 S. Van Houtte 21

HERBACEOUS, ORNAMENTAL AND FLOWERING PLANTS.

Abelia Grandiflora 22
 Abyssinian Banana 22
 Achyranthes 22
 Agave 22
 Aralia 22
 Aspidistra 22
 Banana 22
 Begonias 22
 Caladium 22
 California Holly 22
 Carnations 22
 Chrysanthemums 22
 Cuphea Llavea 23
 C. Ignea 23
 Daisies 23
 Geraniums 23
 Heliotrope 23
 Lavender 23
 Marguerites 23
 Oleanders 23
 Pampas Grass 23
 Pansies 23
 Papyrus Antiquorum 23
 Petunias 23
 Pincenectitia 23
 Primula 23
 Romneya Coulteri 23
 Salvias 23

Sultana Patens..... 23
 Verbenas 23
 Veronica Maratima..... 23
 Violets 23

BULBOUS PLANTS.

Agapanthus 24
 Allium Grandiflorum..... 24
 Amaryllis 24
 Begonias 24
 Calla Lily 24
 Cannas 24
 Chinese Lily 24
 Cyclamen 24
 Dahlias 24
 Easter Lily..... 24
 Gladiolus 24
 Hyacinths 24
 Iris 24
 Narcissus 24
 Tulips 24

DRACANEAS AND PALMS.

Dracaena Australis 25
 D. Indivisa 25

PALMS.

Chamerops Excelsa..... 25
 Cocos Australis..... 25
 Cycas Revoluta..... 25
 Erythea Edules..... 25
 Kentia Forsteriana..... 25
 Latania Bourbonica..... 25
 Phoenix Canariensis..... 25
 P. Roebelenii..... 25
 Rhapsis Flabelliformis..... 25
 Seaforthia Elegans..... 25
 Washingtonia Filifera..... 25
 W. Robusta..... 25

HEDGE AND BORDER PLANTS.

Barberry 26
 Boxwood 26
 California Privet..... 26
 Daisy 23
 Dusty Miller..... 26
 Euonymus Japonica..... 26
 E. Golden Variegated..... 26
 E. Pulchellus..... 26
 E. Silver Variegated..... 26
 Myrtus Communis..... 26
 Santolina 26

CLIMBING, VINING AND TRAILING PLANTS.

Ampelopsis 27
 Antigonon Leptopus..... 27
 Australian Pea Vine..... 27
 Bignonia Venusta..... 27
 E. Jasminoides..... 27
 Bougainvillea Braziliensis..... 27
 Cinnamon Vine..... 27
 Clematis 27
 Ficus Repens..... 27
 Hedera Helix..... 28
 Honeysuckle 28
 Jasmine 28
 Lotus Vine..... 28
 Moonflower..... 28
 Muehlenbeckia 28
 Passion Flower..... 28
 Plumbago Capensis..... 28
 Smilax 28
 Solanum Wendlandii..... 28
 Swainsonia Alba..... 28
 Tecoma Rosea..... 28
 T. Grandiflora..... 28
 Vinca, or Periwinkle..... 28
 Wistaria 28

FERNS.

Adiantum 28
 Asparagus 28
 Boston Sword..... 29
 Cyrtomium Falcatum..... 29
 Common Sword Fern..... 29
 Elegantissima 29
 Pteris Tremula 29
 Whitmanii 29
 Nephrolepis Superbissima..... 29
 N. Roosevelt..... 29
 Brake Ferns..... 29
 Hanging Baskets..... 29
 Grass Seed 29
 Lippia Repens..... 29
 Rhubarb 29

ROSES.

Agrippina 30
 American Beauty..... 30
 Black Prince..... 30
 Baby Rambler..... 30
 Bessie Brown..... 30
 Bride 30
 Bridesmaid 30
 Bon Silene..... 30
 Captain Christy..... 30
 Catherine Mermet..... 30
 Caroline Testout..... 30
 Christine de None..... 30
 Duchess de Brabant..... 30
 Duchess of Albany 30

Etoile de France 30
 Etoile de Lyon 31
 Frau Kark Druschki..... 31
 General Jacqueminot 31
 General McArthur 31
 Golden Gate 31
 Gruss an Teplitz..... 31
 Isabella Sprunt..... 31
 Helen Gould..... 31
 Kaiserin Augusta Victoria..... 31
 Killarney 32
 La Detroit 32
 La France 32
 Liberty 32
 Madame Abel Chatenay 32
 Madame Cecil Brunner..... 32
 Magna Charta 32
 Malmaison 32
 Maman Cochet..... 33
 Marie Van Houtte..... 32
 Meteor 33
 Paquerette 33
 Papa Gontier..... 33
 Paul Neyron..... 33
 Perle des Jardines..... 33
 New Pink Cherokee..... 33
 Pres. Carnot..... 33
 Rainbow 33
 Richmond 33
 Single Cherokee..... 34
 Double Cherokee..... 34
 Striped La France..... 34
 Sunset 33
 Ulrich Brunner..... 34
 Veilchenblau..... 34
 Vick's Caprice..... 34
 White La France..... 34
 White Maman Cochet..... 34
 W. R. Smith..... 34

CLIMBING ROSES.

Caroline Goodrich..... 34
 Climbing Cecil Brunner..... 34
 Climbing Kaiserin..... 34
 Climbing Meteor 34
 Climbing Papa Gontier..... 34
 Cloth of Gold..... 34
 Crimson Rambler..... 34
 Dorothy Perkins..... 34
 Gold of Ophir..... 34
 James Sprunt..... 34
 Lamarque 34
 Mme. A. Carrier..... 35
 Marechal Nell..... 34
 Reine Marie Henriette..... 34
 Reve d'Or..... 35
 Striped Henriette..... 35
 Climbing Wootton..... 35
 Yellow Banksia..... 35
 Cut Flowers..... 35



— *Extra Fertilized* —
Potting Earth

— *For Plants* —

\$1.00—per Sack—\$1.00

— ***Pottery*** —
and
Hanging Baskets

— *of all descriptions* —

— *We make a specialty of* —
Garden Hose, Etc.

— *at the lowest prices* —

Revero Reinforced Hose; the best made

— *17c per foot* —

