

Historic, Archive Document

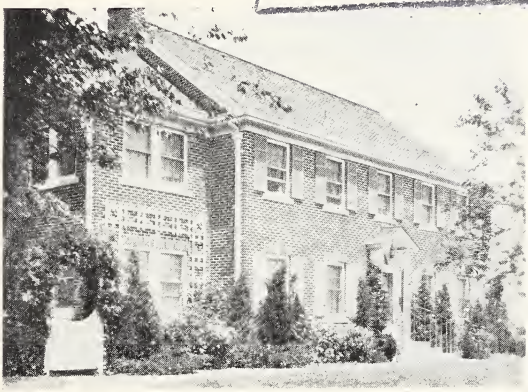
Do not assume content reflects current scientific knowledge, policies, or practices.

1930

62.24

"It's Not a Home
Until It's Planted"

LIBRARY
RECEIVED
★ JAN 17 1930 ★
U. S. Department of Agriculture.



Kansas Evergreen Nurseries



*Nurserymen and Landscape
Architects*



**Nursery Stock Adapted
to the Middlewest**



Manhattan, Kansas

Foreword

THE purpose of our organization is two-fold: first, to grow healthy, vigorous nursery stock true to name and adapted to the middle west; and, second, to design and plant beautiful landscapes according to correct principles of landscape design. We are equipped to handle any landscape problem, no matter how large or small, from the grading, drainage, or irrigation, to the finished lawn and planting.

Location

The Kansas Evergreen Nurseries are located on the Rock Island and Union Pacific railroads, one hundred twenty miles west of Kansas City on U. S. highway number 40.

Guarantee

Nursery stock is more or less of a perishable nature. Improper care after receiving, undue exposure or undesirable soil, also injurious insects and diseases, which may be contracted, neglect after planting, over which we have no control, may cause nursery stock to die regardless of how thrifty and healthy it may have been when delivered, and under these circumstances we cannot guarantee it to grow. We do not warrant in any way, express or implied, the contents, or the description, purity, productiveness, or any other matter of any seeds, bulbs, plants, or trees sold by us, and we will not in any way be responsible for the crop. We will, however, replace or refund the original purchase price of any plants, shrubs or trees that are not labeled true to name, and will replace at half retail price any plants, shrubs, or trees, that fail to grow, provided these have been given reasonable care, and providing the original bill of sale has been paid in full and is presented.

Labor necessary for replacement charged at full price.

It is mutually agreed between the purchaser and ourselves that we will not be held for any greater amount than the original purchase price.

This guarantee expires August 1st, following purchase.

Landscape Service

Ornamental nursery stock, properly arranged according to correct principles of landscape design, is a hundred-fold more effective than that planted "hit and miss." It is therefore wise to consult us for landscape plans before doing your planting. In most instances, where the nursery stock is purchased from us, these plans are furnished without extra cost.

Write us at once regarding plans for your grounds. We will be glad to furnish you full information regarding our landscape service. No landscape problem too large or too small to receive our careful consideration.

Kansas Evergreen Nurseries

Manhattan, Kansas

Branch Office in Topeka Kansas and
Associated with the

Kansas Landscape & Nursery Co.

Salina, Kansas

Specimen Evergreens



Stock quoted below is all select specimen, each tree dug with a solid ball of earth and securely wrapped in burlap.

RED CEDAR (*Juniperus Virginiana*)—Grows rapidly, is dense and compact. Of bright green foliage in summer which fades to bronze in winter. Very hardy.

	Each
18 to 24 inches	\$2.00
2 to 3 feet	3.00
3 to 4 feet	4.00
4 to 5 feet	5.60
5 to 6 feet	7.00
6 to 7 feet	9.00
7 to 8 feet	12.00
8 to 9 feet	16.00
9 to 10 feet	20.00
10 to 12 feet	25.00

JUNIPER CANADENSIS—Dense habit of growth, with grayish green foliage.

	Each
12 to 18 inches	\$3.00
18 to 24 inches	4.00
2 to 3 feet	5.00

SWEDISH JUNIPER (*Juniperus communis suecica*) — Slender, graceful branches. Shining green foliage. Upright.

	Each
18 to 24 inches	\$3.00
2 to 3 feet	4.00



Red Cedar

CANNART JUNIPER (*Juniperus cannarti*)—Compact tree of conical form. Rich green. Retains green color through winter.

	Each
3 to 4 feet	\$ 8.00
4 to 5 feet	10.00
5 to 6 feet	14.00

SAVIN JUNIPER (*Juniper sabina*)—Handsome moss-green foliage. Spreading habit of growth.

	Each
12 to 18 inches	\$3.00
18 to 24 inches	4.00
2 to 3 feet	6.00



Savin Juniper

SILVER RED CEDAR (*Juniperus virginiana glauca*)—Pyramidal. Soft blue color. Retains color all winter.

3 to 4 feet.....	\$ 8.00
4 to 5 feet.....	10.00
5 to 6 feet.....	14.00
6 to 7 feet.....	20.00

COLORADO SILVER JUNIPER (*Juniperus scopulorum*)—Pyramidal. Silver-blue foliage.

18 to 24 inches.....	\$3.00
2 to 3 feet.....	4.00
3 to 4 feet.....	6.00

PFITZER'S JUNIPER (*Juniperus pfitzeriana*)—Handsomest of all Chinese Juniper varieties. Low, broad, pyramidal growth.

18 to 24 inches.....	\$ 5.00
24 to 30 inches.....	6.00
30 to 36 inches.....	7.00
3 to 4 feet.....	10.00



Pfitzer's Juniper

CHINESE ARBORVITAE (*Biota orientalis*)—Bushy tree of pyramidal growth. Very hardy.

	Each	Per 10
18 to 24 inches.....	\$1.50	\$12.50
24 to 30 inches.....	2.00	15.00
3 to 4 feet.....	3.00	25.00
4 to 5 feet.....	4.00	35.00
5 to 6 feet.....	5.00	45.00
6 to 7 feet.....	8.00	75.00
7 to 8 feet.....	10.00	95.00
8 to 9 feet.....	12.00	155.00
9 to 10 feet.....	18.00	175.00
10 to 12 feet.....	18.00	

COMPACT ARBORVITAE (*Biota orientalis compacta*)—Light green, compact foliage of round shape and dwarf habit of growth.

	Each	Per 10
12 to 15 inches.....	\$1.50	\$12.50
15 to 18 inches.....	1.75	15.00
18 to 24 inches.....	2.00	17.50
24 to 30 inches.....	3.00	27.50
30 to 36 inches.....	5.00	45.00
3 to 4 feet.....	6.00	50.00

BAKER'S ARBORVITAE (*Biota orientalis pyramidalis*)—Compact, pyramidal shape. Retains natural shape without trimming.

	Each
18 to 24 inches.....	\$3.00
2 to 3 feet.....	5.00
3 to 4 feet.....	6.00
4 to 5 feet.....	7.50
5 to 6 feet.....	9.00



Scotch Pine

BERKMAN'S GOLDEN ARBORVITAE (*Biota orientalis aurea nana*)—Deep rich golden in color; compact and bushy. Very hardy.

12 to 15 inches.....	\$2.50
15 to 18 inches.....	3.00
18 to 24 inches.....	4.00
24 to 30 inches.....	6.00

GOLD SPIRE (*Biota orientalis aurea conspicua*)—Of golden color, pyramidal type. More open than compact.

18 to 24 inches.....	\$3.00
24 to 30 inches.....	4.00
30 to 26 inches.....	5.00

AUSTRIAN PINE (*Pinus austriaca*)—Long, spreading branches with long stiff needles.

12 to 18 inches.....	\$1.50
18 to 24 inches.....	2.00
24 to 36 inches.....	4.00
3 to 4 feet.....	6.00

JACK PINE (*Pinus banksiana*)—Fast growing, very hardy.

2 to 3 feet.....	\$2.00
3 to 4 feet.....	3.00

PONDEROSA PINE (*Pinus ponderosa*)—Good green color. Very long needles.

18 to 24 inches.....	\$2.00
2 to 3 feet.....	3.00
3 to 4 feet.....	5.00
4 to 5 feet.....	7.00

SCOTCH PINE (*Pinus sylvestris*)—One of the hardiest pines for general planting. Blue green foliage.

12 to 18 inches.....	\$1.50
18 to 24 inches.....	2.00
24 to 30 inches.....	3.00
3 to 4 feet.....	5.00
4 to 5 feet.....	8.00

MUGHO PINE (Dwarf pine)—Leaves short, stiff and formal. Does not grow tall, but spreads out, generally assuming a globular form; very dense.

10 to 12 inches.....	\$2.25
12 to 15 inches.....	3.00
18 to 24 inches.....	4.00
24 to 30 inches.....	6.00



Mugho Pine



Black Hills Spruce



Norway Spruce

BLACK HILLS SPRUCE

(*Picea canadensis*)—Hardest of all spruces; compact and bushy in habit of growth. Foliage green to bluish tint.

	Each
18 to 24 inches.....	\$2.50
24 to 30 inches.....	3.50
30 to 36 inches.....	4.50
3 to 4 feet.....	5.50

NORWAY SPRUCE (*Picea excelsa*)—Very fast grower. Deep green foliage. Very hardy.

	Each
18 to 24 inches.....	\$1.50
24 to 30 inches.....	2.00
30 to 36 inches.....	2.50
3 to 4 feet.....	4.00
4 to 5 feet.....	5.00



Colorado Blue Spruce

COLORADO BLUE SPRUCE (*Picea Pungens*)—Intense steel blue color. Dense foliage. Hardy.

18 to 24 inches.....	\$ 7.00
24 to 30 inches.....	10.00
3 to 4 feet.....	20.00
4 to 5 feet.....	30.00
5 to 6 feet.....	40.00

COLORADO SPRUCE (Green)—Same type of growth as the blue, except of green color throughout the year.

18 to 24 inches.....	\$ 4.00
24 to 30 inches.....	6.00
3 to 4 feet.....	12.00
4 to 5 feet.....	15.00

Deciduous Trees

ASH, American White (*Fraxinus alba*).

4 to 6 feet.....	\$.60
6 to 8 feet.....	.75
8 to 10 feet.....	1.00

ASH, Mountain (*Sorbus Aucuparia*).

5 to 6 feet.....	1.00
6 to 8 feet.....	1.50

BIRCH, American white (*Betula alba americana*).

5 to 6 feet.....	\$1.00
6 to 8 feet.....	1.50

BIRCH, European white (*Betula alba european*).

5 to 6 feet.....	\$1.00
6 to 8 feet.....	1.50

CATALPA BUNGEI (*Umbrella Tree*).—Has dense spreading crown, resembling umbrella.

5 to 6 feet, 2 year heads.....	\$2.00
6 to 8 feet, 2 year heads.....	2.50

CATALPA SPECIOSA (*Western Catalpa*).

6 to 8 feet.....	\$.75
8 to 10 feet.....	1.00

CRAB, Bechtel's Double Flowering (*Pyrus bechteli*).—Tree of medium size. Large, fragrant flowers early in spring.

3 to 4 feet.....	\$1.00
------------------	--------



A street planting of American Elm. Eight years old, four inches in diameter, fourteen to sixteen feet high.
 Note the difference in these two kinds of Elm.

ELM, Chinese (*Ulmus Pumila*).—The hardiest and most beautiful of all Elms. Foliage similar to American Elm, but much smaller and more dense. A very fast grower and the best Elm for the western and mid-west states.

	Each	Per 10	Per 100
18 to 24 inches.....	\$.20	\$ 1.75	\$15.00
2 to 3 feet.....	.25	2.00	18.00
3 to 4 feet.....	.35	3.00	27.50
4 to 5 feet.....	.75	7.00	
5 to 6 feet.....	1.00	9.00	
6 to 8 feet.....	1.75	15.00	
8 to 10 feet.....	2.50	22.50	
10 to 12 feet.....	3.50	32.50	
12 to 14 feet.....	5.00	47.50	
2 to 3 inch caliper.....	7.00		
3 to 4 inch caliper.....	10.00		

ELM, American (*Ulmus americana*).

5 to 6 feet.....	\$.75
8 to 10 feet.....	1.50
1½ to 2 inch caliper.....	3.00
2 to 2½ inch caliper.....	4.00
2½ to 3 inch caliper.....	6.00
3 to 4 inch caliper.....	8.00

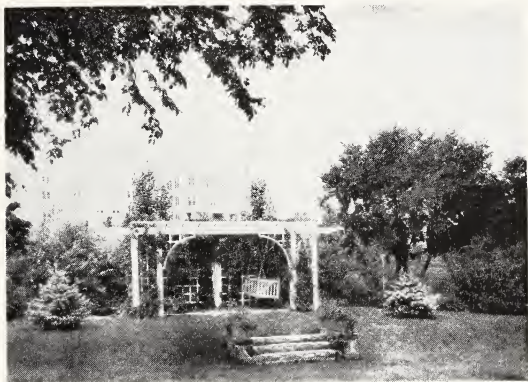
HACKBERRY (*Celtis Occidentalis*).

4 to 5 feet.....	\$.75
5 to 6 feet.....	1.00
6 to 8 feet.....	1.50
8 to 10 feet.....	2.00
10 to 12 feet.....	3.00
12 to 14 feet.....	5.00



A street planting of Chinese Elm, *Ulmus Pumila*. Trees are seven years old, forty feet high, ten inches in diameter. Grown and planted by us.

LOCUST, Honey (<i>Gleditsia triacanthos</i>). —Fern-like leaves.	
4 to 6 feet.....	\$.60
6 to 8 feet.....	.90
LOCUST, Black (<i>Robinia pseudoacacia</i>).	
4 to 6 feet.....	\$.60
6 to 8 feet.....	.90
LINDEN (<i>Tilia americana</i>). —A stately tree, tall growing. Valuable for its white wood.	
3 to 4 feet.....	\$.50
MAPLE, Soft or Silver (<i>Acer dasycarpum</i>).	
4 to 5 feet.....	.50
5 to 6 feet.....	.60
6 to 8 feet.....	.75
8 to 10 feet.....	1.25
10 to 12 feet.....	2.25
12 to 14 feet.....	3.00
OAK, Pin (<i>Quercus palustris</i>). —Deep green foliage, most popular of all oaks.	
5 to 6 feet.....	\$2.00
6 to 8 feet.....	3.00
OAK, Red (<i>Quercus rubra</i>).	
5 to 6 feet.....	\$2.00
6 to 8 feet.....	3.00
POPLAR, Silver (<i>Populus alba nivea</i>).	
5 to 6 feet.....	\$.30
6 to 8 feet.....	.50
8 to 10 feet.....	.75
1½ to 2 inch caliper.....	1.00
POPLAR, Carolina or Norway (<i>Populus monilifera</i>). —The Carolina Poplar grows more readily than any other tree suitable for planting in this territory.	
6 to 8 feet.....	\$.50
8 to 10 feet.....	.75
1½ to 2 inch caliper.....	1.00
2½ to 3 inch caliper.....	2.00
3 to 4 inch caliper.....	4.00
4 to 5 inch caliper.....	8.00
POPLAR, Lombardy (<i>Populus nigra italica</i>).	
6 to 8 feet.....	\$.60
8 to 10 feet.....	.80
10 to 12 feet.....	1.50
12 to 14 feet.....	2.00
14 to 16 feet.....	3.00
RED BUD (<i>Cercis canadensis</i>). —Small western tree with a wealth of floral beauty in the spring before leaves appear.	
3 to 4 feet.....	\$.50
4 to 6 feet.....	.90
RUSSIAN OLIVE (<i>Elaeagnus angustifolia</i>). —Willow-like tree, with silvery-white leaves. Fragrant blossoms.	
2 to 3 feet.....	\$.40
6 to 8 feet.....	.75
SYCAMORE, American (<i>Platanus Occidentalis</i>).	
2 to 3 feet.....	\$.50
6 to 8 feet.....	1.50
8 to 10 feet.....	1.75
10 to 12 feet.....	2.50
TULIP TREE (<i>Liriodendron tulipifera</i>).	
2 to 3 feet.....	\$.50
5 to 6 feet.....	1.00
6 to 8 feet.....	2.00
8 to 10 feet.....	3.00
WILLOW, Russian Golden (<i>Salix vitellina aurea</i>).	
5 to 6 feet.....	\$.50
6 to 8 feet.....	.75
8 to 10 feet.....	1.25
WALNUT, Black (<i>Juglans nigra</i>).	
2 to 3 feet.....	\$.40
3 to 4 feet.....	.60
WILLOW, Wisconsin Weeping (<i>Salix babylonica dolorosa</i>).	
5 to 6 feet.....	\$.50
6 to 8 feet.....	.75
8 to 10 feet.....	1.25
WILLOW, Niobe Weeping (<i>Salix alba fragilis</i>).	
5 to 6 feet.....	\$.50
6 to 8 feet.....	.75
8 to 10 feet.....	1.25



A Back Yard Designed and Planted by Us

Hardy Ornamental Shrubbery

ALTHEA (Rose of Sharon)—Unsurpassed in the hardy shrub line for freedom of blossom from mid-summer until frost when few other shrubs are in bloom. The althea is most handsome with its large camellia-like flowers of the most varied and beautiful shades. Red, white, and pink.

	Each	Per 10
2 to 3 feet.....	\$.50	\$4.50
3 to 4 feet.....	.75	6.00

ALMOND, Flowering (Prunus japonica).—Blooms very early in spring. Small pom-pom shaped flowers pink and white.

2 to 3 feet.....	\$.60	\$5.00
------------------	--------	--------

BARBERRY, Japanese (Berberis thunbergi)—Very hardy, will make a dense hedge that will always remain symmetrical without pruning, or it may be pruned to almost any form. Green foliage fading to crimson with red berries in autumn.

18 to 24 inches.....	\$.30	\$2.75
24 to 30 inches.....	.40	3.75



New Red-Leaved Japanese Barberry

BARBERRY, Japanese Red Leaved (*Berberis atropurpurea*).—
Same as above except the leaves are a purplish red throughout the season.

12 to 15 inches.....	\$.50	\$4.50
15 to 18 inches.....	.60	5.50

BUDDLEIA (Butterfly Bush.)—Very attractive summer shrub producing purple and violet flowers, in August. Very conspicuous, sweetly scented, and attracts butterflies.

Two year plants.....	\$.50	\$4.00
----------------------	--------	--------

CALYCANTHUS (Sweet Shrub)—A compact bush with handsome leaves and small double chocolate-red blossoms springing from the axis of the leaf. Very fragrant.

18 to 24 inches.....	\$.35	\$3.00
----------------------	--------	--------

CORALBERRY, Indian Currant, (*Symphoricarpos vulgaris*).—
Very hardy shrub, bright green foliage with red berries which remain on all winter.

18 to 24 inches.....	\$.35	\$3.00
2 to 3 feet.....	.40	3.50

CALLICARPA (*Symphoricarpos callicarpa*).—Purple berry.

18 to 24 inches.....	\$.50	4.00
2 to 3 feet.....	.60	5.00

DOGWOOD, Red Branched, (*Cornus stolonifera*).—Hardy, tall growing, yellowish flowers, highly-colored foliage in autumn.

2 to 3 feet.....	\$.40	\$3.50
3 to 4 feet.....	.50	4.50

DESMODIUM (*Desmodium penduliflorum*).—Bears sprays of rose colored daisy-like flowers in early spring.

Strong plants.....	\$.40	\$3.50
--------------------	--------	--------

EUONYMUS (See Strawberry Bush).

ELDER, Golden (*Sambucus aurea*).—Bright golden foliage. Very showy.

2 to 3 feet.....	\$.60	\$5.00
------------------	--------	--------

ELDER, American (*Sambucus canadensis*).—Tall growing, black fruit in autumn.

3 to 4 feet.....	\$.50	\$4.00
2 to 3 feet.....	.35	2.00

ELDER, Fern-leaved (*Sambucus laciniata*).—Bright green, fern-like leaves.

2 to 3 feet.....	\$.50	\$4.00
------------------	--------	--------

FORSYTHIA, Golden Bell (*Suspensa fortunei*).—Yellow bell-shaped blossoms appear in spring before the leaves. Leaves scarlet in autumn.

2 to 3 feet.....	\$.50	\$4.00
3 to 4 feet.....	.75	6.00

HYDRANGEA, Large flowering (*Hydrangea paniculata grandiflora*).—Of medium height with large white flowers which fade to pink and bronze in autumn.

18 to 24 inches.....	\$.50	\$4.50
----------------------	--------	--------

HONEYSUCKLE, Tartarian (*Lonicera tatarica*).—A vigorous, beautiful shrub producing pink or white flowers in June, and red berries throughout the summer. Very desirable.

18 to 24 inches.....	\$.30	\$2.50
2 to 3 feet.....	.50	4.50



Butterfly Bush (See page 8)

Forsythia (Golden Bell)

HIGH BUSH CRANBERRY (See *Viburnum*).

KERRIA, Yellow (*Kerria japonica*).—A slender green-branched shrub, covered with yellow flowers from July to October

18 to 24 inches.....	\$.35	\$3.00
2 to 3 feet.....	.45	4.00

KERRIA, White (*Rhodotypos Kerrioides*).—Leaves vivid green, with white flowers in early spring.

18 to 24 inches.....	\$.35	\$3.00
2 to 3 feet.....	.45	4.00

LILAC, Common (*Syringa vulgaris*).—Old favorite, white or purple.

2 to 3 feet.....	\$.50	\$4.50
3 to 4 feet.....	.60	5.00

LILAC, Rothomagensis (*Syringa chinensis*).—More bushy than above, somewhat later. Blooms very heavily.

2 to 3 feet.....	\$.50	\$4.50
3 to 4 feet.....	.60	5.00

LILAC, Charles X.—Reddish purple-single.

2 to 3 feet.....	\$1.00	\$9.00
3 to 4 feet.....	1.50	

LILAC, Marie La Graye.—White—Single.

2 to 3 feet.....	\$1.00	
3 to 4 feet.....	1.50	

MOCK ORANGE, Sweet

(*Philadelphus coronarius*)—A tall, vigorous and hardy bush. In May it bears profuse white flowers resembling orange blossoms. These shrubs are very valuable for background, screens, grouping or specimen plants. The beautiful white flowers are fine for cutting, and are also deliciously fragrant. They not only make a grand display at the flowering period, but they continue to please with their attractive foliage.

18 to 24 inches.....	30c	\$2.50
2 to 3 feet.....	40c	3.50



Mock Orange

MOCK ORANGE (*Philadelphus avalanche*).—A

graceful shrub with slender arching branches covered with white flowers. One of the best.

18 to 24 inches.....	30c	\$2.50
2 to 3 feet.....	40c	3.50

MOCK ORANGE (*Philadelphus grandiflora*)—Has large showy flowers, somewhat fragrant. Medium growing.

18 to 24 inches.....	\$.30	\$2.50
2 to 3 feet.....	.40	3.50

PRIVET, Hybrid Russian (*Ligustrum ibolium hybridum*)—Best hedge privet. Very hardy, fast growing, glossy dark green foliage which holds its color and remains on well into the winter. Almost an evergreen hedge. Newly introduced and sold exclusively by us.

	Each	Per 100
12 to 18 inches.....	\$.12	\$ 9.00
18 to 24 inches.....	.15	12.00

PRIVET, Amoor River (*Ligustrum amurense*)—Light green foliage. Upright growth. Very hardy.

12 to 18 inches.....	.10	7.00
18 to 24 inches.....	.12	9.00

PRIVET, Globe

This privet is shaped into a very symmetrical ball or globe. Unusually ornamental.

18 x 18 in. B. and B.....	\$2.00	\$18.00
24 x 24 in. B and B.....	2.50	24.00

PRIVET, Ibota, (*Ligustrum ibota*).—Spreading. Tall growing, fine foliage with small white flowers.

18 to 24 inches.....	\$.35	\$2.50
2 to 3 feet.....	.50	4.50

PRIVET, Regal's (*Ligustrum regelianum*).—A dense shrub with stiff, twiggy, horizontal spreading branches drooping at the ends.

18 to 24 inches.....	\$.40	\$3.50
----------------------	--------	--------



Our New Russian Hybrid Privet

PURPLE LEAF PLUM (*Prunus pissardi*).—A very fine ornamental shrub with foliage of reddish purple. Especially valuable for contrast in foliage or accent in shrub beds.

2 to 3 feet.....	\$.50	\$4.50
3 to 4 feet.....	.75	7.00

PUSSY WILLOW, (*Salix caprea*).—Cultivated variety of Pussy Willow which unfold their large catkins of silvery pink from 1 to 2 inches long in early spring. Ends of branches may be cut in January or February; place them indoors in a vase of water and watch the catkins unfold. A delightful mid-winter bouquet.

3 to 4 feet.....	\$.50	\$4.00
5 to 6 feet.....	.75	6.00

QUINCE, Japan (*Cydonia*).—One of the very earliest shrubs to blossom, the flowers appearing before the leaves are fully developed. Very hardy and easily transplanted.

18 to 24 inches.....	\$.60	\$5.50
2 to 3 feet.....	.75	6.00

SUMAC, Common (*Rhus glabra*).—The foliage in autumn is brilliant crimson and the ovoid terminal panicles of fruit are bright purple.

2 to 3 feet.....	\$.50	\$4.50
------------------	--------	--------

SUMAC, Staghorn (*Rhus typhina*).—Foliage deep lustrous green in the summer followed by brilliant fall colorings of scarlet and orange. Grows tall and should be used in the background of mass planting.

2 to 3 feet.....	\$.50	\$4.50
------------------	--------	--------

SNOWBERRY (*Symphoricarpos racemosus*).—Rose colored flowers in June and July, followed by large, clustered, milk-white fruits which remain far into the winter. The combination of pink flowers and white berries on the same twig is charming. Compact in form with numerous slender, twiggy branches. Can be used either in small group or in large mass and border plantings.

18 to 24 inches.....	\$.35	\$3.00
2 to 3 feet.....	.40	3.50



Spirea Van Houttei

SPIREA ANTHONY WATERER (Meadow sweet spirea).—A dwarf variety that seldom exceeds two feet in height and produces clusters of bright crimson blossoms the entire summer and on into late fall. Foliage attractive, being variegated with creamy white or yellow.

12 to 15 inches.....	\$.35	\$3.00
18 to 24 inches.....	.40	3.50

SPIREA FROEBELI.—Dwarf, and similar to Anthony waterer, but a trifle taller with broader leaves. Bright crimson corymbs during July and August.

12 to 18 inches.....	\$.30	\$2.50
18 to 24 inches.....	.35	3.00

SPIREA THUNBERGI (Snow garland).—A graceful bush with innumerable small white flowers; leaves narrow. Valuable for forcing. Early flowering.

18 to 24 inches.....	\$.45	\$4.00
2 to 3 feet.....	.50	4.50

SPIREA VAN HOUTTEI.—Often called Bridal Wreath. One of the most popular of shrubs. Graceful and drooping. When in bloom it is a mass of solid white. Well adapted for open sunlight or heavy shade. Frequently used for hedges.

18 to 24 inches.....	\$.25	\$2.00
2 to 3 feet.....	.30	2.50
3 to 4 feet.....	.50	4.00
4 to 5 feet.....	.60	5.50

SPIREA CALLOSA ALBA — One of the best dwarf white-flowering shrubs. Very symmetrical. Can be kept sheared very low which makes it especially valuable for low borders around flower beds.

12 to 18 inches.....	\$.35	\$3.00
----------------------	--------	--------

SNOWBALL, Common (*Viburnum opulus sterile*).—The old-fashioned snowball with its large globular clusters of snow-white flowers in May and June makes a very attractive shrub.

2 to 3 feet.....	\$.60	\$5.50
------------------	--------	--------

TAMARIX (*Tamarix amurensis*).—Small leaves somewhat like the Juniper and delicate pink flowers in spikes all summer.

3 to 4 feet.....	\$.40	\$3.00
4 to 5 feet.....	.50	4.00

VIBURNUM OPULUS (High Bush Cranberry).—Its red berries, resembling cranberries, hang until destroyed by frost late in Fall. Flowers white in drooping flat cymes.

2 to 3 feet.....	\$.60	\$5.50
------------------	--------	--------



WEIGELA EVA RATHKE.—An elegant showy shrub with fine, rose colored flowers. Has numerous spreading branches with dark green leaves. Flowers produced in great panicles. Blossoms in June.

18 to 24 inches.....	\$.60	\$5.50
2 to 3 feet.....	.75	6.00

WEIGELA ROSEA.—Same as above except flowers are pink.

18 to 24 inches.....	\$.40	\$3.50
2 to 3 feet.....	.50	4.00

Roses

We offer all our roses in strong, well rooted, two-year-old field grown plants at 75c each; \$6.00 per 10.

TEA, HYBRID TEA AND EVERBLOOMING ROSES



Gruss an Teplitz

FRANCIS SCOTT KEY—Large Rose of bright crimson which changes to bluish crimson as the flower ages, unsurpassed for its fullness and perfection of form. Blooms open freely in hot weather and they are especially fine in late summer.

ETOILE DE FRANCE—A sparkling red Rose on high, graceful stems. Fragrant, buds shapely, large flowers, unusually double, and of informal shape when open. Splendid for cutting. Very hardy and disease resisting.

GRUSS AN TEPLITZ—Happy, cherry, and most friendly of all roses. Bushes large, bearing lusty crimson blooms. Intensely fragrant with the old sweet Rose perfume that everybody loves.

COLUMBIA—An extremely popular American-bred Rose. Its large and firm buds open very slowly to wide, impressive flowers whose color deepens as it expands to a rich-rose-pink, slightly tinged with yellow at base of petals. Stems long and strong, making it ideal for cutting. Fragrant and has fine lasting qualities.

JONKHEER J. L. MOCK—An imposing rose of largest size, heavy petals delicately reflexed, showing a creamy pink against a background of brilliant carmine. At its best in hottest weather.

KAISERIN AUGUSTE VIKTORIA—The standard of perfection in form. Flowers are very double, and are white, tinted with lemon. Color unequalled.

SUNBURST—An entrancing Rose of exquisite color, brilliant orange-yellow in center paling to buff. Very fine Roses for cutting.

LADY HILLINGDON—Golden yellow, cup-shaped blooms, very sweetly scented and holding color better than most yellow Teas. Bush is erect, strong, disease proof and blooms freely.



Columbia



Red Radiance

- PINK RADIANCE**—The best and most popular pink Rose. The fragrant flowers are large, globular but not compact, brilliant rose-pink, with lighter tints on the inner surface of the petals. The shapely, big buds are borne on long stems, and open slowly.
- RED RADIANCE**—Its big, bouncing blooms of cerise-red endear this Rose to all lovers of fine Roses. Very free bloomer and the buds are particularly fine in the half-open state.
- LUXEMBOURG**—An excellent Rose of orange-yellow color. Well formed buds ideal for cutting.
- MADAME CAROLINE TESTOUT**—Satiny rose, deepening to clear red in center. Large and delightfully fragrant.
- PINK KILLARNEY**—Bush strong, sturdy and upright, with fine, heavy insect-proof foliage, bearing flowers that are simply exquisite in form and color; the bud is exceedingly long and the flowers immense in size; color deep, brilliant, sparkling shell-pink; hardy everywhere.
- WHITE KILLARNEY**—Identical as the Pink Killarney except in color, which is glistening white. Beautifully shaped buds, very distinctive.
- BESSIE BROWN**—Creamy-white flowers, tinted flesh. Sweetly scented.
- F. W. DUNLAP**—A large free-flowering Rose of brilliant dark pink color and fine form. Good for cutting as it keeps well.
- PINK LA FRANCE**—The queen of Roses. Beautiful bright silvery-pink with pale lilac shading.
- MRS. AARON WARD**—A most delightful Rose with its frilly petals and varying but always exquisite color. In cool seasons, and on first opening, it is rich, golden fawn, but in bright sunlight it quickly changes to soft pink and white. Flowers not large, but gracefully formed, full double and fragrant.



Los Angeles

LOS ANGELES—One of the best, known for its extreme beauty of well-formed flowers, alike attractive in bud and bloom, and showing shades of salmon-pink, apricot and orange almost impossible to describe.

HYBRID PERPETUAL ROSES

AMERICAN BEAUTY—A magnificent Rose which still reigns supreme. The rich, glowing crimson flowers, shaded and veined, are immense in size. Very double. Borne on long stiff stems and very fragrant.

FRAU KARL DRUSCHKI—The best hardy, snow-white rose now known. Tremendously strong grower. Hardy anywhere; immense, glorious flower, snow white in color.

GENERAL JACQUEMINOT—Known everywhere as the famous "Jack" Rose; crimson scarlet, very fragrant, large full.

PAUL NEYRON—Mammoth in size and always sure to make a magnificent show of rosy color. Its great size and sweet fragrance are its strongest points. Very hardy and sometimes blooms in the fall.



Paul Neyron

J. B. CLARK—Tremendously vigorous in growth. When properly trained it makes a magnificent bush. Flowers are of immense size, dark scarlet-crimson with deep veins and mysterious shadows.

ULRICH BRUNNER—A healthy-growing bush of moderate size, buried in June beneath thumping big blooms of bright cherry-red. Most extravagant bloomer. One of the finest in Hybrid Perpetuals for cutting, as the flowers are not too compact to open well in the house. Intensely fragrant.

Climbing Roses

AMERICAN BEAUTY—A strong-growing Rose that will do anywhere that any climbing rose will do. Extraordinary quality of display given by its rosy crimson, sweet-scented flowers in its first burst of bloom.

SILVER MOON—Flowers large, semi-double, and open from primrose buds of pleasing shape to what looks like a fine white clematis with a center of golden anthers. Vigorous, foliage large, dark green, glossy and disease resistant.

AMERICAN PILLAR—In early June the tremendously vigorous canes of this rampantly prosperous Rose plant, already carrying rich foliage, becomes covered with single flowers, shadings of carmine and rosy pink to white in the center. The large, delicately fragrant blooms become lighter in tint as the days go by, and they open successively in very large and symmetrical clusters all over the plant. The effect is wonderful.

HIAWATHA—Immense clusters of single flowers of intense deep crimson, shading to pure white at the base of the petals.

GARDENIA—A beautiful yellow climbing Rose, very fragrant and free; early flowering.

PAUL'S SCARLET CLIMBER—Vivid scarlet, shaded crimson, makes a brilliant display for a long period of time in the garden. A wonderful climbing rose, one of the hardiest.

DOROTHY PERKINS—A most beautiful deep pink, the flowers are borne in large clusters of small double blooms and are very sweetly scented. Very fine climber.

DR. VAN FLEET—Very large flowers, center built high, petals beautifully undulated and cupped. The color is a remarkable delicate shade of flesh-pink on the outer surface, deepening to rosy-flesh in the center.

CRIMSON RAMBLER—Bright crimson flowers produced in large clusters of pyramidal form; grand variety for pillars and arches and to train over porches.

EXCELSA—The color is an intense, clear carmine-like, a rich contrast to Pink Dorothy Perkins. Flowers are perfectly double, produced thirty to forty on a stem.

Rugosa Roses

SIR THOMAS LIPTON—Double white flowers of large size, borne freely all summer and fall on sturdy, iron-clad bush of great size, which has the desirable foliage of the original Rugosa. Very hardy.

CONRAD F. MYERS—The finest of the Hybrid Rugosas, producing very fragrant silvery-pink flowers of large size, equal to Hybrid Teas in form. Blooms heavily in June and occasionally thereafter. Bushes very vigorous.

F. J. GROOTENDORST
—A new combination of the Baby Rambler with the Rugosa. Bright red flowers of small size, fringed and double, producing freely and continuously in large bunches thru spring, summer, and fall. One of the finest types of everblooming hedges as well as specimen bush or shrub.

ROSA RUGOSA RUBRA
—Fine for massing or hedges; absolutely hardy. Vigorous, very spiny, with rough, wrinkled foliage. Flowers are large, five-petaled, and very fragrant, varying from bright pink to deep carmine with big golden centers. Blooms early and continues all summer.





Pride of Haarlem

Spring Flowering Bulbs

Tulips, Darwin

75c per dozen; \$4.50 per 100; \$40.00 per 1000

BARONNE DE LA TONNAYE—Vivid pink, margined blush.

FARNCOMBE SANDERS—Fiery rosy scarlet, inside vivid cerise-scarlet with white center marked blue; fine large flowers.

CLARA BUTT—Delicate salmon-pink; perfect shape and lovely color. Very popular.

PRIDE OF HAARLEM—Bright rose, suffused with purple, enormous flowers.

MADAME KRELAGE—Soft lilac-rose, with a broad margin of blush-pink, flowers very large on tall stems.

DREAM—Beautiful uniform lilac.

Early Single

KEIZERSKROON—Carmine-scarlet, with broad yellow border. A great favorite for bedding; should be planted by itself. Forces well.

Single May-Flowering or Cottage Tulips

INGLESCOMBE PINK—Soft rose with a salmon flush; globular form.

YELLOW PICOTEE—Yellow, elegant recurved petals. Very popular.

INGLESCOMBE SCARLET—Brilliant scarlet, with black base; large flowers.

Narcissus (or Daffodils)

\$1.25 per dozen; \$10.00 per 100.

EMPEROR—Pure yellow trumpet of immense size and wide overlapping rich primrose perianth.

EMPRESS—Of strong, robust growth; a fine large flower. Snow white perianth; trumpet rich yellow.

POETICUS—Pheasant's eye of Poet's Narcissus. Pure white perianth; orange cut, scarlet border; fragrant.

PAPER WHITE—Flowers pure snow white; desirable for their beauty and delicious odor.

Hyacinths

25c each; \$2.00 per 10

KING OF BLUES—Finest dark blue Hyacinth in cultivation.

LA VICTOIRE—Bright red.

YELLOW HAMMER—Golden yellow.

HYACINTH L'INNOCENCE—Pure white.

Cannas

10c each; 3 for 25c; \$1.00 per dozen

PRESIDENT—Scarlet-red, dwarf.

LOUISIANA—Orange and scarlet.

AUSTRIA—Clear yellow, dwarf.

ALLEMANIA—Scarlet, with yellow border.

Dahlias

COUNTESS LONSDALE—Salmon pink, good for cutting. Each 15c; \$1.25 per dozen.

SOUVENIR GUSTAV d'OAZON—Bright red, very large. Each 15c; \$1.25 per dozen.

DELICE—Delicate pink. Each 15c; \$1.25 per dozen.

DUKE OF WELLINGTON—Clear white. Each 10c; \$1.00 per dozen.

QUEEN VICTORIA—Good yellow. Each 15c; \$1.25 per doz.

KALIF—Red cactus, very large. Each 15c; \$1.25 per dozen.

MAUD ADAMS—White tinged with pink and lavender. Each 15c; \$1.25 per dozen.

MINA BURGLE—Deep red. Each 15c; \$1.25 per dozen.

LITZ—Variegated orange and yellow. Each 15c; \$1.25 per dozen.

JACK ROSE—Dark velvety red. Each 15c; \$1.25 per dozen.

MIXED—Each 10c; \$1.00 per dozen.

Gladiolus

- ALICE TIPLADY**—Beautiful orange saffron. Dozen 75c.
- ANNA EBERIUS** — Dark velvety purple. Dozen 75c.
- A. W. HUNT**—Very large orange scarlet. Dozen 75c.
- CRIMSON GLOW**—Deep brilliant crimson. Dozen 75c.
- DR. VAN FLEET**—Delicate pink, with yellow throat. Dozen 75c.
- GOLD**—Pure golden yellow, early bloomer. Dozen 75c.
- LE MARECHAL FOCH**—Light pink. Dozen 60c.
- MARY PICKFORD**—Creamy white, soft yellow throat. Dozen 60c.
- MONTEZUMA** — Park carmine, yellow throat. Dozen 75c.
- MRS. FRANCIS KING**—Brilliant vermilion scarlet. Dozen 60c.
- POLLYANNA**—Rich golden yellow. Dozen 75c.
- SCHWABEN**—Delicate pale yellow. Dozen 75c.
- ARLON**—Salmon pink, early, excellent bloomer. Dozen 50c.
- MIXED**—Named varieties that have gotten mixed including a lot of the above named varieties. Dozen 50c.



Crimson Glow

Perennial Flowers



ACHILLEA—The Pearl. Very hardy dwarf perennial which grows about 12 inches high. Excellent for the sunny border. Pure white double flowers. Each 20c; doz. \$2.00.

AQUILEGIA—See Columbine. **ASTERS (Hardy)**—Each 30c; \$2.50 per 10.



Aquilegia (Columbine)

BOUQUET ROSE — Rosy pink, 4 to 5 feet.

BRUSSELS — New, graceful sprays of extra large single, pale-lavender flowers, 4 feet.

CAPTAINE—Light lavender blue, 4 feet.

CLIMAX—Lovely lavender blue flowers. Branching, 4 to 5 feet.

CLIMAX—Lovely lavender blue flowers. Branching 4 to 5 feet.

FLORIBUNDA—Small but pretty flowers of lavender-blue. 4 to 5 feet.

LADY LLOYD—Very fine. Rose pink with purple sheen. 4 feet.

MRS. McCUDDEN — Soft mauve, 3 feet.



Coreopsis

MRS. S. T. WRIGHT—Rosy-purple, 5 feet.

YPRES—Rosy-red. Neat compact bushes, 3 to 4 feet.

TOWNSHENDII—Rosy-lilac. Large flowering, 2 feet.

ANCHUSA—Italica, Dropmore. Very hardy and satisfactory perennial. Clear gentian blue. 3 to 4 feet. 20c each; \$2.00 per dozen.

ARTEMISIA (Mountain Fringe)—Finely cut silvery white foliage, grown for foliage effect, making a beautiful dense mass. Each 20c; \$2.00 per dozen.

BABY'S BREATH (*Gypsophila paniculata*)—Cloud-like sprays of minute white flowers. Very effectively used with bouquets of roses or other flowers. Each 25c; \$2.50 per dozen.

BELFLOWER—(See *Platycodon*).

BLEEDING HEART (*Dicentra Spectabilis*). The old-fashioned Bleeding Heart of Grandmother's garden. Bears drooping racemes of crimson and white heart-shaped flowers. Very hardy. Each 50c; \$4.00 per 10.

BOCCONIA CORDATA (Plume Poppy)—A noble hardy perennial beautiful in foliage and flowers,

and adapted for planting in the shrubby borders. Flowers creamy white in terminal panicles during July and August. Very hardy. Each 25c; \$2.00 per dozen.

CANTERBURY BELLS (*Campanula*)—Mixed Biennial. A large, genus of showy plants, blooming in profusion. The *Campanula* medium claims a situation in most gardens. Very hardy and certain to flower. Flowers deep bell-shaped, blue, white, and pink. Each 20c; \$2.00 per dozen.

PYRAMIDALIS—Very conspicuous, 4 to 5 feet high. Salver-shaped blue flowers borne profusely in September. Each 25c; \$2.50 per dozen.

CHRYSANTHEMUM—(Perennial).

INDIAN RED—Large red flowers.

MARIE ANTOINETTE—Large lavender-pink.

LITTLE BOB—Bronze Red. Button.

OLD HOMESTEAD.—Unusual shade of shell pink.

ALICE HOWELL.—Yellow. Fine.

WHITE DIANA.—Good white. Each 25c; \$2.50 per dozen.

COREOPSIS (*Lanceolata*). — Large golden yellow daisy-like flowers. Profuse bloomer throughout the summer. Each 20c; \$2.00 per dozen.

CONVALLARIA — (See *Lily-of-the-Valley*).

COLUMBINE (*Aquilegia*). — Mrs. Scott Elliot. As a garden flower, the long spurred Columbine is the daintiest of our outdoor grown flowers. They come in blue, white, and yellow, and shades of pink and rose. Fine for cut flowers.

Skinnerii. Long-spurred Columbine, scarlet tipped with yellowish green. Each 20c; \$2.00 per dozen.

CARNATIONS—Hardy. Each 20c; \$2.00 per dozen.

DAISY—

Shasta (*Alaska*) — Large snowy white flowers in bloom all summer and fall. Very fine garden flower. Each 20c; \$2.00 per dozen.

Hertze—Similar to Shasta Daisy, slightly smaller flowers but blooms earlier. Valuable for blooms on Decoration Day. Each 20c; \$2.00 per dozen.

English Daisy — *Bellis Perennis*. Longfellow variety. Double rose-pink blooms in April. Each 20c; \$2.00 per dozen.

Daisy, painted. (See *Pyrethrum*).



Delphinium

DELPHINIUM—

Belladonna — Beautiful hardy plants, grown in borders for their stately habit and the handsome spikes of gorgeous light blue flowers.

Bellamosa—Same as above except flowers deep blue. Fine for cutting. Each 25c; \$2.50 per dozen.

Blackmore and Langdon—Superior strain of Delphinium producing spikes of very large flowers that range in color from deep blue to almost red. Each 30c; \$3.00 per dozen.

Cardinale — Brilliant scarlet. Each 30c; \$3.00 per dozen.

Wrexrum Hybrid — Hollyhock strain. Huge double flowers on long spikes, in colors that range from deep purple through the blues to delicate pink. Each 30c; \$3.00 per dozen.



Foxglove

DIANTHUS—(See Sweet Williams and Pinks.)

FOXGLOVE (Digitalis)—These old garden favorites are stately and elegant in Summer when they produce bold masses of leaves and flowers of mixed colors. Each 20c; \$2.00 per dozen.

FUNKIA—Plantain Lily. Deep glossy green foliage, free blooming, especially useful for the shady places. Each 20c; \$2.00 per dozen.



Gaillardia

GAILLARDIA GRANDIFLORA

(Blanket Flower) — Base of petals are scarlet-crimson, bordered golden yellow. A most beautiful combination; makes a wonderful show in the garden. Useful in assorted bouquets and valuable for table decoration. Each 20c; \$2.00 per dozen.

GYPSOPHILA PANICULATA

—(See Baby's Breath).

GOLDEN GLOW (Rudbeckia)

Tall growing perennial bearing masses of double golden yellow flowers all summer. Each 20c; \$2.00 per dozen.

HOLLYHOCKS — Red, pink, white, and yellow. Double or single. Each 15c; \$1.50 per dozen.

HIBISCUS (Rosemallow)—Very popular shrub-like perennial with handsome green foliage bearing large bright flowers throughout the summer. Pink, red, and white. Each 30c; \$3.00 per dozen.

Hibiscus Manihot, Sunset Hibiscus, Lemon Yellow. Each 30c; \$3.00 per dozen.

HESPERIS MATRONALIS (Sweet Rocket).—Showy spikes of flowers, mixed colors. Each 30c; \$3.00 per dozen.

HEMEROCALLIS (Yellow Day Lily)—Very effective in clumps and masses; numerous panicles of orange and yellow lily-like flowers protruding high above the grass-like foliage. Each 25c; \$2.50 per dozen.

IRIS germanica—

Blue Jay—Standards bright clear blue; falls intense dark blue. Each 25c; \$1.50 per 10.

Caprice—Standards rosy red; falls deeper rosy red. Each 25c; \$1.50 per 10.

Gracchus—Standards clear yellow; falls maroon red reticulated white. Each 20c; \$1.25 per 10.

Juniata—Standards and falls clear blue, large fragrant flowers. Tall. Each 25c; \$1.50 per 10.

Kochi—Standards and falls rich claret purple. Very handsome. Each 25c; \$1.50 per 10.

Mme. Chereau—White, elegantly frilled with a border of blue. Each 20c; \$1.25 per 10.

Mrs. H. Darwin—Pure white, falls slightly reticulated violet at the base, very beautiful and free flowering. Each 20c; \$1.25 per 10.

Maori King—Standards rich golden yellow; falls velvety crimson with a yellow edge. Each 25c; \$1.50 per 10.

Purpureau—Purple. Each 20c; \$1.25 per 10.

Queen of May—A lovely soft rose-lilac, almost pink. Beautiful. Each 25c; \$1.50 per 10.

Rose Unique—Bright violet-rose. Nearest approach to pink Iris. Very distinctive. Each 25c; \$1.50 per 10.



Iris Caprice

KANSAS GAY FEATHER
—(See *Liatris*).

LATHYRUS LATIFOLIA
(—Hardy Sweet Pea).—
Hardy vine. Clusters
of red, white or pink,
pea shaped flowers
Each 25c; \$2.50 per
dozen.

L I A T R I S P Y C N O S -
TACHYA (Kansas Gay
Feather) — An excellent
back-border perennial.
Handsome spikes of
rose-purple. Each 25c;
\$2.50 per dozen.

LILIUM CANDIDUM—
Madonna lily, white.
Each 25c; \$2.50 per
dozen.

LILIUM REGALE—Regale
lily, flowers white shad-
ed pink. Each 50c; \$5.50
per dozen.

LILIUM SPECIOSUM RU-
BRUM — White, shaded
with deep rose and
spotted red. Each 50c;
\$5.00 per dozen

LILIUM AURATUM (Japan Gold-Banded Lily)—Ivory-white
with central band of yellow and numerous purple spots.
Each 50c; \$5.00 per dozen.

LILIUM TIGRINUM—Tiger Lily. Large, orange spotted
with black. Each 20c; \$2.00 per dozen.

LILY-OF-THE-VALLEY — (*Convallaria majalis*).—Sprays of
white bell-like flowers for the shady place. Each 20c;
\$2.00 per dozen.



Regale Lily

Iris pumila—Dwarf Iris—
deep blue. Early. 15c
each; \$1.00 per 10.

Iris Siberica — Siberian
Iris—purple, late. Ideal
to use with Oriental
Poppies. 15c each; \$1.00
per 10.

Iris Kaempferi (Japanese)
Iris — Ideal near lily
pools or in a moist lo-
cation. Each 25c; \$2.50
per dozen.



Tiger Lily

LILY — Yellow
Day. See *Hem-
erocallis*.

LILY — Funkia.
(See *Funkia*).

LYTHRUM RO-
SEUM (Loose
Strife) — Very
hardy plant
thriving in al-
most any sit-
uation. Large
spikes of rose
colored flow-
ers from July
to September.
Each 25c;
\$2.50 per doz.

PLATYCODON
(J a p a n e s e
Bellflower) —
Before open-
ing, flowers
resemble a
balloon. After
opening a star-
like blue flow-
er. Each 25c;
\$2.50 per doz.



Pinks (Dianthus)

PINKS—(Dianthus Plumaris)—Double Dwarf Erfurt. Finest doubles mixed. Very spicy odor. Very fine for borders. Each 15c; \$1.50 per dozen.



Oriental Poppies

POPPY (Papaver Orientale).—No plant is more brilliant in late spring or early summer than the Oriental Poppy, with its large flowers, silken petals and flaming colorful rich red. Each 25c; \$2.50 per dozen.

POPPY (Victoria Louise)—Delicate shell pink. Each 25c; \$2.50 per dozen.

PYRETHRUM ROSEUM (Painted Daisy)—Early daisy-like flowers in red and pink shades. Very attractive and fine for cut flowers. Hardy. Each 25c; \$2.50 per dozen.

Peonies

FELIX CROUSSE—One of the best brilliant reds. Each \$1.00; \$10.00 per dozen.

FESTIVA MAXIMA—The standard early white, rose type, perfect form and color. Each 50c; \$5 per dozen.

HENRY DEMAY
—Very excellent red, rather late. Each 50c; \$5.00 per dozen.

KARL ROSEFIELD—Rich silky dark crimson, full rose type, one of the best reds, mid-season. Each \$2; \$12.00 per doz.



Peonies

MONS. JULES ELIE—Immense blooms, resembling a chrysanthemum. Clear pink with silvery tinge, good in every way. Universal favorite. Each \$1.00; \$12.00 per dozen.

PRINCESS BEATRICE—Large, compact, high crown. Guards and crown light violet-rose, collar cream-white, center flecked crimson. Fragrant. Free bloomer. Each 50c; \$5.00 per dozen.

FRAGRANCE—Late dark pink. Each 40c; \$4.00 per dozen.

SAN FOIN—Pink. Each \$1.00; \$8.00 per dozen.



Hardy Phlox

Phlox

Each 20c; \$2.00 Per Dozen

H. P. Struthers—Brilliant rosy red, crimson center.

Rheinlander—Soft salmon-pink, deep red eye.

Mrs. Jenkins—Best white. Early. Flowers produced on tall stems.

Bridesmaid—Tall, white flowers with large rose-crimson center.

Rijnstrom—Tall, rose-pink.
Baron Von Heeckeren—Excellent salmon-pink flowers.
Von Lassburg—Tall white.
Lothair—Clear even carmine, deep crimson.
Eclairer—Purple-crimson, light aureole.
Thor—Beautiful shade of blush pink. Free bloomer.
Pantheon—The peerless pink. Extra large flowers of salmon-rose.
La Vogue—Mauve with carmine eye.
Isabay—Dark rich-pink.
Sir Edwin Laudseer—Bright crimson.
Goliath—Deep red.

PHLOX SUBULATA. Moss pink. Low-spreading stems and narrow, moss-like leaves; flowers in wonderful profusion. Each 20c; \$2.00 per dozen.

RUDBECKIA. See Goldenglow.

SEDUM—

Acre (Golden Moss)—Very dwarf; much used for covering and in rock gardens. Foliage bright green, flowers yellow. Each 20c; \$2.00 per dozen.

Spectabile.—A beautiful, erect-growing species with broad, thick light green foliage and immense heads of showy soft rose-colored flowers. Indispensable as a late fall blooming plant. Each 20c; \$2.00 per dozen.

Spectabile, Brilliant.—Rich, dull red, identical with Spectabile in all except color. Each 20c; \$2.00 per dozen.

SWEET WILLIAMS (Dianthus barbatus)—

Johnson's Giant—The finest of the Sweet William mixtures. Giant flowers in marvelous colorings. Brilliant crimsons, white margined, reds, pinks, whites, etc. Each 15c; \$1.50 per dozen.

Diadem—Bright crimson, centers with white margin. Each 15c; \$1.50 per dozen.

Pink Beauty—Rosy salmon pink. Each 15c; \$1.50 per dozen.

Scarlet Beauty—Bright scarlet. Each 15c; \$1.50 per dozen.

Latifolius Atrococcineus—The everblooming Sweet William. Pink-like, dark green foliage with velvety crimson flowers. Blooms from June till frost. Very fine.

SWEET PEA—Hardy. See **Lathyrus**.

VERONICA LONGIFOLIA—A pretty specimen with blue flowers produced on spikes a foot long. Comes into bloom in July and continues for a month. 2 feet. Each 25c; \$2.50 per dozen.



Sweet William

VIOLA (Cornuta)—Tufted pansies. These flowers are ideal in either the rockery or the border. Nothing gives quite the profusion of bright bloom than these violas do in the spring. Everblooming perennial. Each 25c; \$2.50 per dozen.

YUCCA FILAMENTOSA (Adam's Needle)—A stately foliage and flowering plant. The broad, sword-like foliage is evergreen; midsummer shows erect branching stems bearing a showy display of pendant, creamy white bells. Each 30c; \$3.00 per dozen.

Ornamental Grasses

ERIANTHUS—Pampas grass, hardy. Forms large clumps of very long, narrow leaves, gracefully recurving like a beautiful fountain of green, from which rise tall flower-like spikes to a height of 12 feet, bearing large, pampas-like plumes. Each 50c; \$5.00 per dozen.

EULALIA—Plume Grass. Similar to pampas grass except smaller and more fluffy plumes. Each 50c; \$5.00 per dozen.

Hardy Climbing Vines

BOSTON IVY (*Ampelopsis veitchii*)—Leaves small and ivy-like in form. By over-lapping each other they form a dense sheet of green. Foliage has brilliant orange and red coloring in Autumn. Best for clinging to a smooth brick wall. Each 50c; \$5.00 per dozen.

BITTERSWEET (*Celastrus*)—A charming native climber, with bright glossy foliage, and especially admired for its gay and artistic orange berries which are borne in long clusters. Sprays of these bright fruits can be broken or cut off and used in charming winter bouquets or other indoor decorations and will last a long time. Each 50c; \$5.00 per dozen.

BIGNONIA (*Trumpet Vine*)—Splendid climber, vigorous, hardy, with clusters of large, scarlet trumpet shaped flowers in August. Each 75c; \$7.50 per dozen.

AMERICAN IVY (*Virginia Creeper*)—A very rapid growing vine covered with large, heavy leaves, affording shade; of great beauty when changing to scarlet in Autumn. The best climber to grow over porches, rocks or tree stumps. Each 50c; \$5.00 per dozen.

ENGLEMANN IVY (*Ampelopsis Englemanni*)—A rapid growing vine of the Virginia Creeper family, but having characteristics of its own. Leaves are smaller and many more of them than those of the Creeper. Foliage of a deep green which changes to a beautiful scarlet in the Fall. This vine will cling to rough brick, pebble-dash or stone, and is very good for breaking the monotony of a bare brick building. Hardest of all vines. Each 50c; \$5.00 per dozen.



Connecting the Garden with the Residence



A Salina Home Landscaped by Us.

CLEMATIS, Jackmani—A very profuse blooming variety with flowers from four to six inches in diameter, of an intense violet-purple color, borne in continuous masses on the Summer shoots. The very best sort for general planting. **Each \$1.00; \$10.00 per dozen.**

CLEMATIS PANICULATA—One of the most desirable, useful and beautiful of hardy garden vines; a luxuriant grower, profuse bloomer with fine foliage. Flowers white, of medium size, very pretty and fragrant, produced in the greatest profusion in late Summer. **Each 50c; \$5.00 per dozen.**

HONEYSUCKLE (Lonicera)—Hall's Honeysuckle.—The most popular variety. Nearly evergreen. The flowers are pure white, changing to yellow, produced abundantly and have fragrance of the Jassamine. **Each 30c; \$3.00 per doz.**

WISTERIA (sinensis)—One of the most rapid growing of all the climbing vines. It grows from 15 to 20 feet in a season. Has long, pendulous clusters of pale blue flowers in May or June, and sometimes in Autumn. **Each 75c; \$7.50 per dozen.**

Fruit Stock

APPLES

	Each	Per 10	Per 100
Two year trees, 3 to 4 feet.....	\$.35	\$3.00	\$25.00
Two year trees, 4 to 5 feet.....	.50	4.50	40.00
Two year trees, 5 to 6 feet.....	.65	6.00	50.00

EARLY SUMMER VARIETIES:

Early Harvest—Medium size, bright yellow when ripe. Season July.

Red June—Medium size, brilliant red skin.

Duchess—Large greenish yellow fruit, striped red. Season July and August.

MID-SUMMER AND FALL VARIETIES:

Maiden Blush—Good size, smooth, round, beautifully blushed with red on creamy yellow ground. Season September.

Fameuse (Snow Apple)—Fruit medium, pale greenish-yellow mixed with stripes of red. Season October.

Wealthy—Large, light yellow with crimson stripes. Season September.

WINTER VARIETIES:

Delicious—Medium to large, light crimson flecked light green.

Grimes Golden—Medium to large, bright yellow with pink cheek.

Jonathan—Large, red and beautiful. Very fine flavor.

Winesap—Medium size, dark red, juicy, mild. A good keeper.

Stayman's Winesap — Large, bright red color. Especially adapted to Kansas.

CRAB APPLES

Hyslop—Medium, yellow grounded with heavy shadings of deep crimson. Season. September to October.

Transcendent—Medium to large, brownish-yellow with blush of carmine. Season September.

Whitney—Large, yellow, striped with red. Season, August.

Siberian—About an inch in diameter, grown in clusters. Bears abundantly. August to September.

PEACHES

One year trees, 4 to 5 feet.....	\$.35	\$3.90
One year trees, 5 to 6 feet.....	.40	3.50

Belle of Georgia—Large, color red and white. Perfect free-stone. Season, July and August.

Carman (Free)—Large, creamy-white with deep blush. August.

Champion (Free)—Large, yellowish-white mottled with red. Season, August.

Crawford's Early (Free) — Large, bright yellow with red cheek. Season, August and September.

Crawford's Late (Free)—Large, yellow with broad red cheek. Season, late September.

Elberta (Free)—Medium, lemon-yellow with blush on sunny side. Season, August and September.

Heath Cling (Cling)—Large, creamy white with delicate red blush. Season, late September.

APRICOTS

Two year trees, 4 to 5 feet.....	\$.75	\$7.00
Two year trees, 5 to 6 feet.....	.80	7.50
Moorpark —Large, orange-yellow. Sweet and juicy. August.		
Superb —Especially adapted to Kansas. Beautiful yellow with slight blush. Long season, covering a period of three weeks.		

CHERRIES

	Each	Per 10	Per 100
One year trees, 2 to 3 feet.....	\$.40	\$3.50	\$30.00
One year trees, 3 to 4 feet.....	.50	4.50	40.00
Two year trees, 5 to 6 feet.....	1.00	9.00	70.00
Early Richmond —Medium size, dark red, acid flavor. June.			
English Morello —Medium to large, dark red, nearly black when ripe.			
Montmorency —Large, dark red. Two weeks later than Early Richmond.			
Compass (Cherry Plum) —Very hardy, trees dwarf. Bright red.			
Wragg —Medium. Dark red. Season, July.			

PLUMS

Two year trees, 3 to 4 feet.....	\$.45	\$4.00
Two year trees, 4 to 5 feet.....	.60	5.50
Two year trees, 5 to 6 feet.....	.75	7.00
EUROPEAN PLUMS:		
Damson —Deep purple fruits of delicious quality. Hardy, resists disease.		
Lombard —Medium, violet-red, juicy and pleasant.		
JAPANESE PLUMS:		
Abundance —Medium, rich bright cherry red. Trees hardy, come into bearing early. August.		
Burbank —Medium to large, orange yellow, dotted and marbled with red. Mid-June.		
Red June —Medium to large. Deep vermilion red. Ripens three weeks before Abundance.		
NATIVE:		
Wild Goose —Large, deep red. Very hardy. Excellent fruit. July.		
HANSEN VARIETIES:		
Hanska —Fruit about one and one-half inches in diameter. Bright red. Trees bear early. Ripens in August.		
Opata —Medium fruit, small pit. Dark purplish red. Ripens first week in August.		
Sapa —Dark purple, excellent eating plum. Good bearer.		
Waneta —Very large, red.		

PEARS

One year trees, 3 to 4 ft.....	\$.40	\$3.50	\$30.00
Two year trees, 4 to 5 ft.....	.80	7.00	60.00
Bartlett —Golden yellow, very juicy and highly flavored. Trees hardy and bears early, and abundantly. August and September.			
Clapp's Favorite —Large; pale lemon-yellow, juicy with a delicate flavor. Trees hardy and productive. August and September.			
Duchess —Very large, greenish yellow. Heavy bearer, dependable. October and November.			
Flemish Beauty —Large, juicy, melting and rich; strong grower and good bearer. September and November.			
Kieffer —Large; golden yellow, juicy and melting. One of the best for canning and preserves. Trees hardy and vigorous.			
Seckel —Small, rich, yellowish-brown; one of the best flavored pears known; very productive. Sept. and October.			

GRAPES

Agawam (Red) —Large berry of excellent flavor. Vigorous and productive.			
No. 1—2 year.....	Each \$.25	Per 10 \$2.00	Per 100 \$18.00
No. 1—1 year.....	.20	1.80	15.00
Catawba —Bunches medium; berries large, deep coppery red. Juicy and sweet.			
No. 1—2 year.....	.20	1.50	12.50
No. 1—1 year.....	.15	1.30	10.00
Delaware —Bunches small, compact with small red berries with thin but firm skin; juicy and very sweet.			
No. 1—2 year.....	.25	2.00	18.00
No. 1—1 year.....	.20	1.80	15.00
Concord —One of the most popular and reliable. Bunches large with large black berries. Juicy and very sweet.			
No. 1—2 year.....	.20	1.50	12.50
No. 1—1 year.....	.15	1.30	10.00

Moore's Early—Large grape, ripening a week earlier than Concord; berry large, black and of good quality.

No. 1—2 year.....	.25	2.00	18.00
No. 1—1 year.....	.20	1.80	15.00

Niagara—Best white variety. Bunches and berries large, greenish white. Juicy and sweet.

No. 1—2 year.....	.25	2.00	18.00
No. 1—1 year.....	.20	1.80	15.00

RASPBERRIES

RASPBERRIES10	.80	6.00
--------------------------	-----	-----	------

St. Regis Everbearing (Red)—Berries bright crimson of large size. Very sweet with the full raspberry flavor. Very hardy.

Kansas (Black)—Large, round, firm, juicy. Strong grower and very productive. Early.

Cuthbert (Red)—Large, bright scarlet-crimson, of good quality, juicy and refreshing, vigorous grower, hardy and productive. Late.

Cumberland (Black)—Vigorous growing, large black fruit, very productive. Excellent quality and flavor.

BLACKBERRIES

BLACKBERRIES10	.80	6.00
---------------------------	-----	-----	------

Early Harvest—One of the earliest, berry medium size, good quality and bears well.

Eldorado—Hardy and vigorous, berries large, black, born in clusters, sweet, melting and pleasing to the taste.

Snyder—The hardiest blackberry known; fruit medium sized, of good quality; a good market variety.

Mersereau—Strong grower, good producer. Large brilliant black berries which retain their odor under all conditions, extra quality.

GOOSEBERRIES

Houghton—Medium size, pale red, sweet and juicy. Vigorous grower, abundant producer.

Downing—Fruit large, round, light green with distinct veins, soft, juicy and fine flavored.

2 year No. 1.....	.25	2.00	18.00
1 year No. 1.....	.20	1.75	15.00

CURRANTS

White Grape Currant—Very large, yellowish-white; sweet, very mild acid; excellent for the table.

Red Dutch—Old, well-known. Of excellent quality and great bearer.

1 year No. 1.....	.25	2.00	18.00
2 year No. 1.....	.20	1.75	15.00

STRAWBERRIES

	Per 100	Per 1000
STRAWBERRIES	\$1.00	\$6.00

Gibson—Best for market and home. Berry large; dark glossy red. Very productive.

Cooper—Excellent combination of size and flavor. Heavy bearer, plants vigorous.

Premier—Berry has a rich, glossy appearance, being a bright, clear red. Easy and safe to grow. Best for markets.

Senator Dunlap—Hardy, productive, a splendid keeper, of good size, very beautiful dark red.

Aroma—Large, dark red, of very good quality. Plants vigorous. Ships well. Late.

Mastodon, Everbearing—Berry unusually large, bears well all summer and fall. Of fine quality and flavor.

.....	2.50	15.00
-------	------	-------

ASPARAGUS

	Per 10	Per 100
ASPARAGUS40	1.50

Mary Washington—A rust-resistant, vigorous, high yielding strain of giant asparagus. The plants are the best found in ten years' search among thousands of plants tested. High yielding of large size and rapid growth, all of which quality indicates tenderness.

Conover's Colossal—This variety is much superior in size and quality of any of the old common sorts of Asparagus, being remarkably tender and fine-flavored. The large green shoots, one to two inches in diameter, are sent up thickly from the crown.

RHUBARB

	Each	Per 10	Per 100
RHUBARB15	1.00	8.00

Myatt's Linnaeus—Genuine red stem, having been propagated for many years from divisions only. Very tender, without being in the least stringy. Mild-sub-acid flavor.

*Landscape
Designing and Planting
Our Specialty*



WE ARE
EQUIPPED TO
DESIGN
AND
PLANT
ANY WHERE
IN THE
MIDDLEWEST

PARKS
ESTATES
CEMETERIES
HOME GROUNDS
FARMSTEADS
GOLF COURSES
FLOWER GARDENS
CITY SUB-DIVISIONS

**Kansas Evergreen
Nurseries**

ROBERT SCOTT, Proprietor
Manhattan, Kansas

*Branch Office in Topeka and Associated
with the*

KANSAS LANDSCAPE & NURSERY CO.

Salina

Kansas